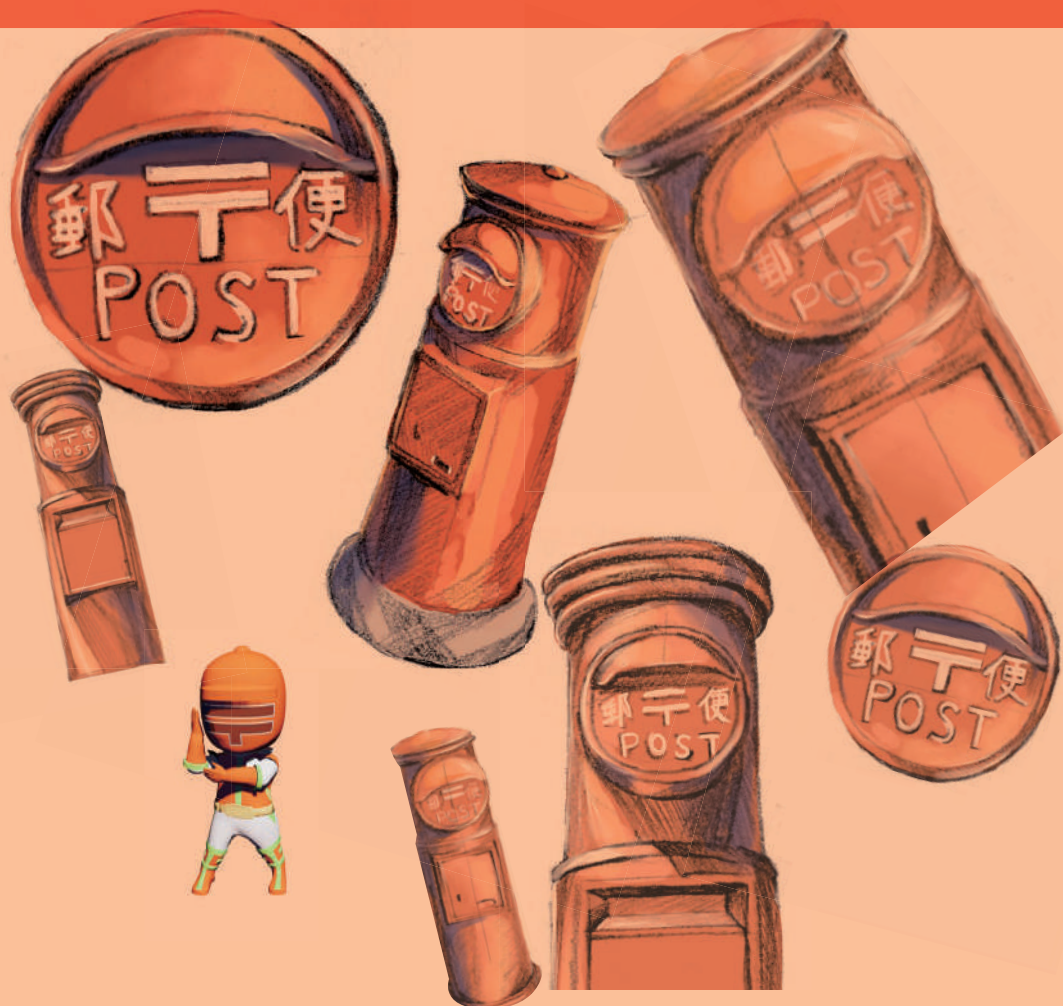


Kodaira Maru-Post Map

Issued by : Kodaira Tourism and Town Promotion Assoc.
HP : <https://kodaira-tourism.com>
TEL : 042-312-3954
e-mail : info@kodaira-tourism.com



1

Ome Kaido Ave.
(Near the Kodaira Ichisho Mae bus stop)



1-2095, Ogawa-cho, Kodaira

2

Ogawaeki-Nishi St.
(In front of the municipal housing complex)



4-18 Ogawa-cho, Kodaira

3

Nakajuku Dori Ave.
(Kodaira Ogawa Nishi Post Office)



3-7-12 Ogawa Nishimachi, Kodaira

4

Ome Kaido Ave.
(Suiren Animal Hospital)



1-783 Ogawa-cho, Kodaira

5

Nakajuku Dori Ave.
(Near the Royal City Kodaira apartments)



4-29-1 Ogawa Nishimachi, Kodaira

6

Takano Kaido Ave.
(Across the street from the Ueki Dental Clinic)



13-17 Takanodai, Kodiara

7

Takanodai Eki-dori Ave.
(Near the Sekine Shoten)



4-10 Takanodai, Kodaira

8

Gas Museum
(In front of the East entrance)



4-31-25 Onuma-cho, Kodaira

9

Fuchu Kaido Ave.
(Across the street from the Kodaira Fureai Sewerage Museum)



2-9-3 Josui Honcho, Kodaira

10

Josui Honmachi-dori Ave.
(Fuji Family Shop)



6-15-17 Josui Honmachi, Kodaira

11

Gakuen Chuo-dori Ave.
(Across the street from the Sosoya Animal Hospital)



2-18-1 Gakuen Nishimachi, Kodaira

12

Ome Kaido Ave.
(Suzuki-en)



522 Nakamachi, Kodaira

13

Kihei Bridge, North side



1-10-28 Kihei-cho, Kodaira

14

Tokyo Kaido Ave.
(On the West side of the St. Maria Catholic Church)

2-29-8 Onuma-cho, Kodaira

15

In front of the Kodaira
Hirakushi Denchu Art Museum

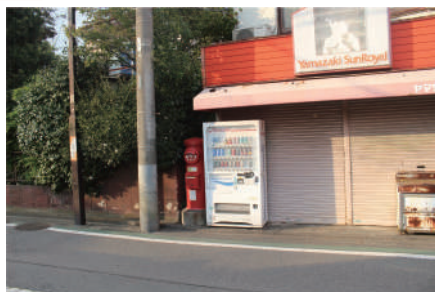
1-7-5 Gakuen Nishimachi, Kodaira

16

Kodaira Dai-san Junior High School
(In front of the school gates)

1-311 Suzuki-cho, Kodaira

17

Hikarigaoka Street Association
(Yamazaki SunRoyal)

6-47-3 Hanakoganei, Kodaira

18

Southeast of the Musashino municipal housing complex
(Inside the triangular park)

1-371 Suzuki-cho, Kodaira

19

Megurita Naka-dori Ave.
(South of the Suzuki Inari shrine)



1-498 Suzuki-cho, Kodaira

20

Near the Ogawa housing complex



2-13 Ogawa Higashi-cho, Kodaira

21

Onuma-cho Dai 5 Park



1-9-4 Onuma-cho, Kodaira

22

Nana-shou Higashi Park



7-1-16 Onuma-cho, Kodaira

23

Municipal housing Ogawa 1 Chome
(East of building #12)



7-5-18 Onuma-cho, Kodaira

24

Ome Kaido Ave.
(Tama Electric Industry)



5-21-36 Hanakoganei, Kodaira

25

Ome Kaido Ave.
(South of the Showa General Hospital, near the Awano Shoten)



6-1-1 Hanakoganei, Kodaira

26

Ome Kaido Ave.
(Near the Tenjin-cho 1 Chome bus stop)



2-12 Tenjin-cho, Kodaira

27

Inside the Showa General Hospital



8-1 Hanakoganei, Kodaira

28

In front of the Kodaira
Furusato Mura



3-9 Tenjin-cho, Kodaira

29

Japan's largest Maru-post
(In front of Rune Kodaira)



1-8-5 Misono-cho, Kodaira

30

Kodaira Post Office



5-16-1 Ogawa Higashi-cho, Kodaira

31

Megurita Hon-dori St.
(Dwelling Saito 13 apartments)



255 Megurita-cho, Kodaira

32

City Terrace Koganei Park
(Near the entrance)



1-3 Hanakoganei Minami-cho, Kodaira

33

Inside the grounds of
Kodaira Dai-roku Elementary School

Currently
out of
service

3-1-2 Ogawa Higashi-cho, Kodaira

34

Inside the grounds of
Kodaira Dai-shichi Elementary School

Currently
out of
service

1-22-1 Onuma-cho, Kodaira

35

Inside the grounds of
Kodaira Dai-juuyon Elementary School

Currently
out of
service

33 Nakamachi-cho, Kodaira

37

École de Pâtisserie et de
Cuisine Kokusai



Currently
out of
service

5-21-14 Ogawa Higashi-cho, Kodaira

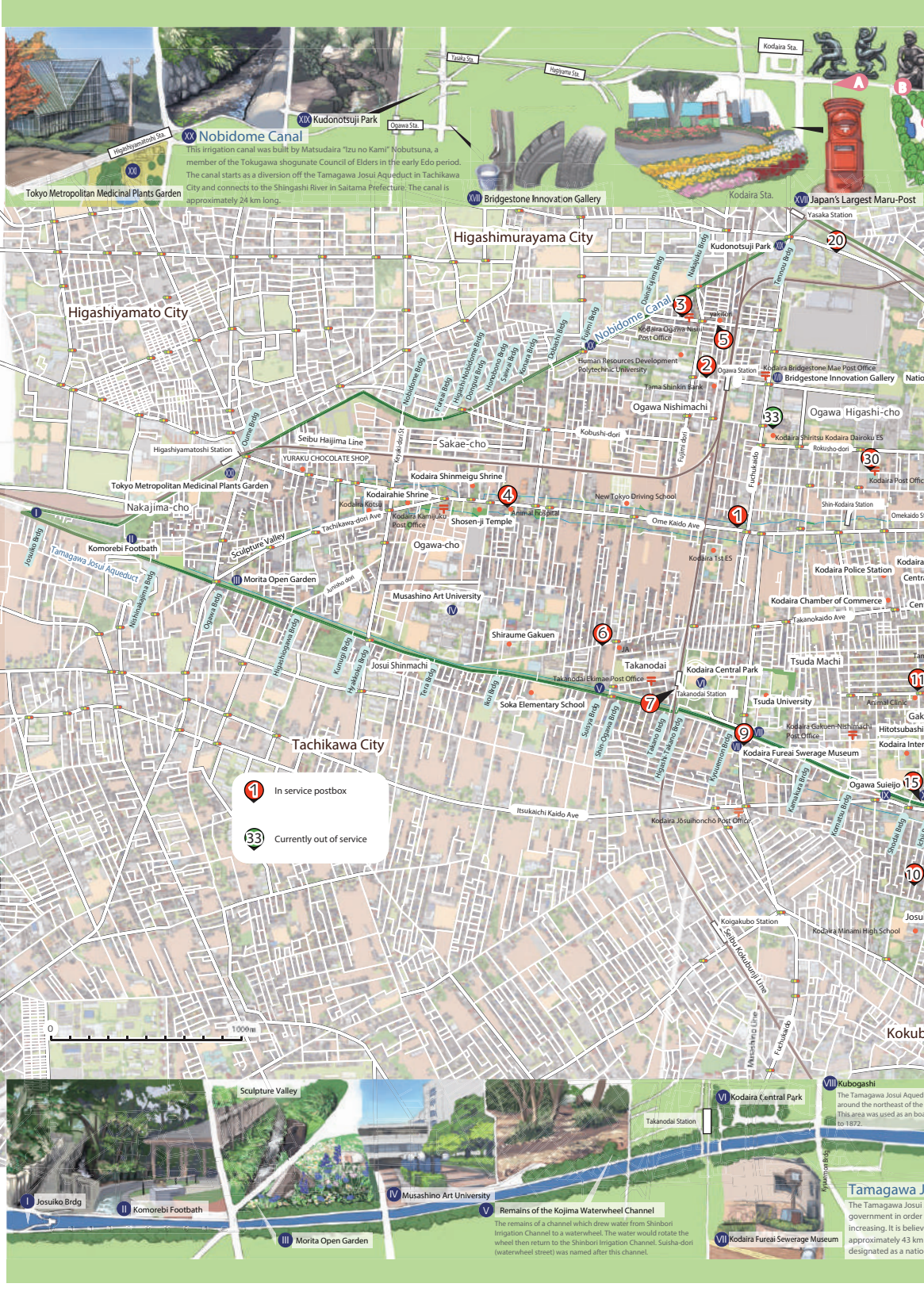
36

Kodaira City Hall



Currently
out of
service

2-1333 Ogawa-cho, Kodaira



Nobidome Canal

This irrigation canal was built by Matsudaira "Izu no Kami" Nobutsuna, a member of the Tokugawa shogunate Council of Elders in the early Edo period. The canal starts as a diversion off the Tamagawa Josui Aqueduct in Tachikawa City and connects to the Shingashi River in Saitama Prefecture. The canal is approximately 24 km long.

Tokyo Metropolitan Medicinal Plants Garden

Bridgestone Innovation Gallery

Japan's Largest Maru-Post

Higashiyama City

Higashimurayama City

Tokyo Metropolitan Medicinal Plants Garden

Nakajima-cho

Tachikawa City

1 In service postbox

33 Currently out of service

0 1000m

Sculpture Valley

IV Musashino Art University

V Remains of the Kojima Waterwheel Channel

VI Kodaira Central Park

VIII Kubogashi

The Tamagawa Josui Aqueduct around the northeast of this area was used as an embankment to 1872.

Tamagawa Josui

The Tamagawa Josui government in order increasing. It is believed approximately 43 km designated as a national

VII Kodaira Fureai Sewerage Museum

The remains of a channel which drew water from Shinburi Irrigation Channel to a waterwheel. The water would rotate the wheel then return to the Shinburi Irrigation Channel. Suisha-dori (waterwheel street) was named after this channel.

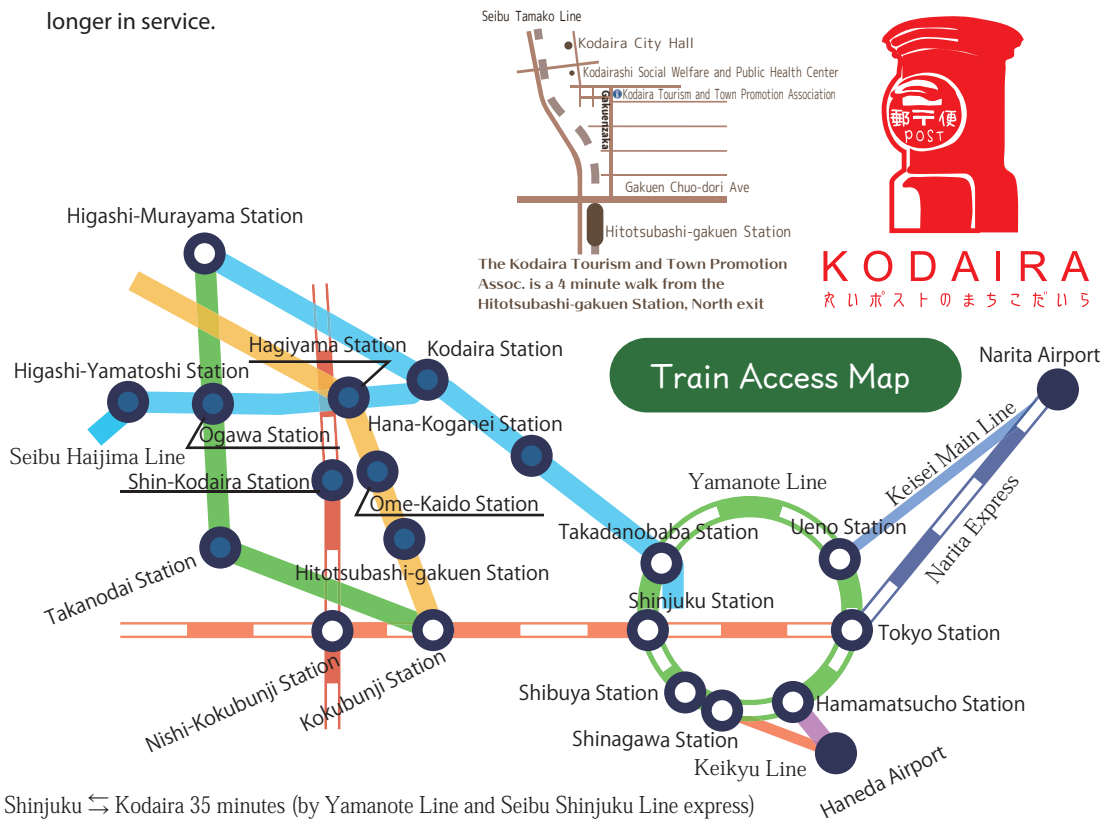
City of round postboxes Kodaira

Starting in 1949 after WWII ended and the nation's distribution networks began to stabilize, round post boxes, officially known as “郵便差出箱 1 号” (Mail Box No. 1), were established as the nation's new, steel post boxes.

Since then, the number of round post boxes around the country have gradually decreased. However, there are still 37* of them in Kodaira as of 2021, which is higher than other Tokyo municipalities. Only 5 remain in the 23 wards.

To promote interest in round post boxes, Kodaira has been implementing various projects such as constructing Japan's tallest round post box (2.8 meters tall) and designing round post box shaped products.

32 round post boxes are still in service (30 owned by the post office, 2 privately owned) and 5 are no longer in service.



Shinjuku \rightleftharpoons Kodaira 35 minutes (by Yamanote Line and Seibu Shinjuku Line express)

Shinjuku \leftrightarrow Kokubunji 30 minutes (by Chuo Line rapid train)

Shinjuku \leftrightarrow Kokubunji 22 minutes (by Chuo Line special rapid train)