

ENJOY NIGHTS OUT IN TOKYO'S SHINAGAWA

English

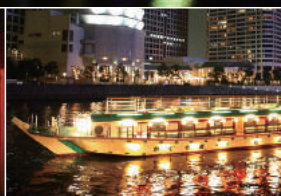
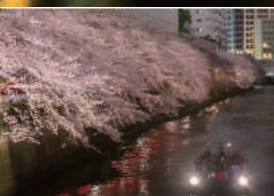
Shinagawa Nightlife



16:00 ▶ 24:00



Entertainment,
superb waterside views,
drinking in local areas,
relaxation spots,
night events and more



Contents

- 04** Three Example Itineraries by Category
Get Your Fill of Nighttime Entertainment in Shinagawa!
- 06** Shinagawa Nighttime Entertainment
Active Edition
Art & Culture Edition
Amusement Edition
- 12** Breathtaking Waterfront Views
Japanese Houseboats & Night Cruises
- 16** Have a Drink in Local Areas!
Bar Areas to Check in Shinagawa
- 20** Relaxation Spots You Want to Go
Public Baths & Unique Spas
- 22** Night Spots That Attract Travelers from Overseas
Dining & Shopping Selection
- 24** Shop at Night Without Worrying About the Time
Shinagawa Nighttime Shopping
- 26** Nighttime Events to Enjoy Throughout the Year in Shinagawa
- 28** Useful Information

Map legend

- Red:** Entertainment/sightseeing
- Blue:** Japanese houseboats/cruise ships
- Green:** Cuisine
- Brown:** Events
- Purple:** Shopping/relaxation/others
- ◆** : Bridge illuminations

• Data information

- Address Operating Hours Scheduled Holidays
- Price Official Website

• About listing details

Check the official websites in advance for each shop or facility for openings and information on how to reserve.

Information for the listings in this magazine was collected in October and November 2019. Details may change after the printing of this magazine due to unforeseeable circumstances. Thank you for your understanding.





Get Your Fill of Nighttime Enter

Couples' Edition ▶ Memorable romantic moments

15:30 Take a stroll under the stars



Osakihirokoji Sta.

Data
▶ p.9

Gotanda Cultural Center Planetarium

Enjoy astronomical observation at a planetarium equipped with a 360-degree projection system. Projections can only be viewed on Saturdays, Sundays, and national holidays.

12 min.
walk

17:30 Enjoy golfing



Gotanda Sta.

Data
▶ p.6

Gotanda Golf Club

Enjoy golf with a state-of-the-art simulator. Equipment can be rented for free, so beginners need not worry!

7 min. by train on the Rinkai Line after switching from the JR Yamanote Line at Osaki Sta.

Family Edition ▶ Entertainment for the whole family

16:00 Flight simulation experience



Kitashinagawa Sta.

Data
▶ p.7

Skyart JAPAN

Try your hand at flying a plane in this flight simulator. A 15-minute flight for kids and young adults is also available.

12 min.
walk

17:30 Enjoy the thrill of a good movie



Shinagawa Sta.



10 min.
walk

T-JOY PRINCE Shinagawa

MAP B-2

This cinema complex is located in a hotel. Enjoy the immersive experience of an IMAX® digital theater.

Data

📍 3F Shinagawa Prince Hotel Annex Tower, 4-10-30 Takanawa, Minato-ku, Tokyo
🕒 8:00-21:30; Fri. & Sat.: 8:00-24:00 *Hours vary by screening schedule
📺 Open 365 days 🌐 <https://tjoy.jp/tjoy-prince-shinagawa>

Ladies' Night Out Edition ▶ A night out to stimulate your body and soul

16:30 Refresh your body and soul



Oimachi Sta.

Data
▶ p.6

Sporu Shinagawa Oimachi

Enjoy sports and escape game attractions. Work up a sweat to refresh your mind and body.

2 min.
walk

18:00 A delightful musical



Oimachi Sta.

Data
▶ p.8

CATS Theatre

A theater featuring performances of the Shiki Theatre Company production of the masterpiece CATS. Time will fly when you're absorbed in this exciting musical.

2 min. on the JR Yamanote Line after switching from the Rinkai Line at Osaki Sta.

tainment in Shinagawa!

Example Itineraries

Here are three example itineraries to get your fill of nightlife in Shinagawa whether you're with your special someone, your whole family, or on a ladies' night out. Enjoy a diverse selection of nighttime charms.

19:00 Delicious cuisine in the sky



Tennozu Isle Sta.

Teppanyaki Restaurant TENNOZ

MAP B-3

Enjoy a nighttime view of the bay area at this *teppan-yaki* restaurant. Have your fill of delicious cuisine and picturesque scenery.

Data

☑ 28F Dai-ichi Hotel Tokyo Seafort, 2-3-15 Higashi-Shinagawa, Shinagawa-ku, Tokyo
☑ Lunch: 11:30-15:00 (L.O. 14:30), Dinner: 17:00-22:00 (L.O. 21:00) ☑ Open 365 days
🌐 <https://www.hankyu-hotel.com/hotel/dh/dhtseafort/restaurants/tennoz/>

10 min.
walk

21:00 Have a drink as you gaze at the night view



Tennozu Isle Sta.

Data
▶ p.22

T.Y.HARBOR

A brewery restaurant located along the canal. Sip on a craft beer as you gaze at the beautiful scenery of the waterfront at night.

20:00 Exciting fishing



Shinagawa Sta.

Data
▶ p.7

Shinagawa Fishing Garden

Even beginners can enjoy a carefree experience at this urban fishing pond. It's all the more exciting if you can catch one!

3 min. by train
on the JR Keihin-
Tohoku Line

21:30 Relax with dinner and a bath



Oimachi Sta.

Data
▶ p.20

Ofuro no Osama Oimachi

This deluxe public bathhouse is complete with a dining hall. After a meal, spend time relaxing in a bath with your family.

21:00 Feast on some meat



Gotanda Sta.

4 min.
walk

Yakiniku Futago Gotanda

MAP B-2

Enjoy some tasty meat at this popular Japanese BBQ restaurant. We recommend the limited "HAMIDERU KALBI," the Japanese black beef rib.

Data

☑ 1F KANO Bldg., 1-25-1 Nishi-gotanda, Shinagawa-ku, Tokyo
☑ 17:00-2:00 the following day (L.O. 1:00); Sat., Sun. & Hol.: 17:00-24:00 (L.O. 23:00)
☑ Open 365 days 🌐 <https://hutago-gotandaan.owst.jp/>

22:30 A drink at the bar



Gotanda Sta.

Highball Bar SUNNY-SIDE 1923

MAP B-2

The highball is a popular drink for both men and women. The diverse selection of highballs at this specialized bar will make your night magical.

Data

☑ 1F Shuwa Gotanda Ekimae Residence, 1-4-8 Nishi-gotanda, Shinagawa-ku, Tokyo ☑ 16:00-24:00 (L.O. for drinks 23:30); Mon. & Sat.: 16:00-23:30 (L.O. for drinks 23:00) ☑ Sun. 🌐 <https://g041710.gorp.jp/>

Shinagawa Nighttime

Active Edition

Introducing you to a range of locations where you can exercise at night without a care in the world!

■ Sporu Shinagawa Oimachi MAP C-2

Enjoy eight types of sports including official Olympic sports, escape attractions, barbecue, and more at this establishment. You can enjoy activities for which facilities are hard to come by, such as artificial surfing and archery.

Data

📍 2-1-19 Hiromachi, Shinagawa-ku, Tokyo
 🕒 7:00-23:00; Sun: 7:00-21:00 *Hours vary by facility
 🗓️ Irregular holidays
 🗑️ Vary by facility
 🌐 <https://www.sporu.jp/>



- ① A beginner's course for artificial surfing is available for inexperienced guests to practice safely.
 ② Bouldering can be enjoyed at varying levels of difficulty. ③ Enjoy a relaxing round of archery.

©Sporu Shinagawa Oimachi Photo by GEKKO



■ Gotanda Golf Club MAP B-2

Play golf on the latest simulator while eating and drinking with your companions. Gloves and clubs can be rented for free. Just bring yourself!

Data

📍 8F Taisei Bldg., 1-11-8 Nishi-gotanda, Shinagawa-ku, Tokyo
 🕒 12:00-last guest
 🗓️ Open 365 days
 🗑️ Golfing charge: from ¥3,300 (meals not included)
 🌐 <http://gotanda-golfclub.com/>



- ① There are four simulators total. Choose a difficulty level according to your skills.
 ② Complete with food and drinks. ③ A spacious facility with a capacity of over 40 people.

Entertainment

Inside, there are areas with ramps, stairs, rails, and more for a complete skating experience. Art and music events are also held occasionally.

■ Nike SB dojo MAP B-3

This complete skateboard park was established with every kind of skater in mind. The venue also holds various events where you can mingle with other skateboarders.

Data

- 📍 Warehouse E, 2-1-3 Higashi-Shinagawa, Shinagawa-ku, Tokyo
- 🕒 15:00-22:00; Sat., Sun. & Hol.: 12:00-22:00
- 📅 Open 365 days
- 💰 Free of charge
- 🌐 <https://nike.jp/dojo/>

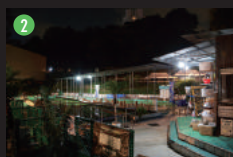


■ Shinagawa Fishing Garden MAP A-2

This urban fishing pond is just a 3-minute walk from Shinagawa Station. Even beginners and whole families can fish freely with fishing rods and bait that are available for a package fee. There is also a barbecue area.

Data

- 📍 3-13-3 Takanawa, Minato-ku, Tokyo
- 🕒 11:00-21:00; Sat., Sun. & Hol.: 9:00-21:00
(Winter: Last admission 19:00, closing 20:00)
- *Guests accompanying children cannot use the facility after sunset.
- 📅 Open 365 days
- 💰 Adult: ¥790 per hour
(Equipment rental fee not included)
- 🌐 <http://fishinggarden.com/>



① Kick back and relax in an illuminated fishing area. ② The fishing rod and bait set is ¥400.

■ Skyart JAPAN MAP B-2

Experience flying an airplane on a flight simulator of which there are only 20 in the world. Receive support from a real pilot and depart for one of 45,000 airports around the world.

Data

- 📍 A-104 Garden City Shinagawa Gotenyama, 6-7-29 Kita-Shinagawa, Shinagawa-ku, Tokyo
- 🕒 10:00-18:00
- 📅 Open 365 days
- 💰 From ¥11,000 (30-min. simulator experience course)
- *15-min. flight for kids and young adults (for guests under 18): ¥6,000
- 🌐 <https://skyart-japan.tokyo/>



① A real pilot will help you and keep your mind at ease. ② The A320 cabin mock-ups and showrooms are fun, too.

Art & Culture Edition

Relax while you enjoy
traditional Japanese culture
and encounter diverse selections of art.



1

Photo by Yamanoue Masanobu

CATS Theatre

MAP C-2

Enjoy the Shiki Theatre Company's production of the classic musical CATS at this dedicated theater. As soon as you set foot in the theater, you'll be lost in the world of CATS. Unfortunately, the theater is scheduled to close in the summer of 2021.

- 1 Enjoy the world of CATS adored around the world.
- 2 Keep an eye out for the cat's eyes on the roof.

Data

- 2-1-18 Hiromachi, Shinagawa-ku, Tokyo
- 1 Vary by performance time (there are daytime performances)
- 2 Vary by performance date
- 3 S seat: ¥12,100 (tax included), other seats are available
- 4 <https://www.shiki.jp/>

Photo by
Shimosaka
Atsutoshi



2



1

©Disney



2

- 1 A dynamic stage for a performance of The Lion King.
- 2 5 min. walk from Oimachi Station West Exit. Look out for a brightly colored building.

Sekisui House Musical Theatre Shiki Theatre NATSU

MAP C-2

This exclusive theater for Shiki Theatre Company is next to the CATS Theatre. Performances of the Disney musical The Lion King will be staged until January 3, 2021, and performances of The Hunchback of Notre Dame will begin in February 2021. The theater is scheduled to close in the summer of 2021 along with the CATS Theatre.

Data

- 2-1-18 Hiromachi, Shinagawa-ku, Tokyo
- 1 Vary by performance time (there are daytime performances)
- 2 Vary by performance date
- 3 S seat: ¥11,100 (tax included), other seats are available
- 4 <https://www.shiki.jp/>

KIWA TENNOZ ISLE TOKYO

MAP B-3

This live music club for adults relocated from Futakotamagawa to Tennoz Isle in 2018. This venue allows you to enjoy high-quality music of various genres, fitting for the stylish location.

Data

- 2-1-3 Higashi-Shinagawa, Shinagawa-ku, Tokyo
- 1 Vary by event
- 2 Irregular holidays
- 3 Vary by event
- 4 <http://www.oasis-kiwa.com/>



1

2

- 1 This club hosts performances of a variety of genres. Check the performance schedule on the website.
- 2 This live music club has had dedicated fans since the Futakotamagawa days.



Kineca Omori

MAP D-2

The first cinema complex to open in Japan features three screens. In addition to the latest popular films, you might see a film you wouldn't expect in one of the scheduled screenings of classic masterpieces.

Data

- 📍 5F SEIYU Omori,
6-27-25 Minami-oi, Shinagawa-ku, Tokyo
- 🕒 10:00-final screening
- 🗓 Open 365 days
- 💰 General admission: ¥1,800
- 🌐 https://ttcg.jp/cineka_omori/



The largest screen, Kineca 1 has 134 seats. Get comfortable and enjoy the latest popular films.



Kita Noh Theater

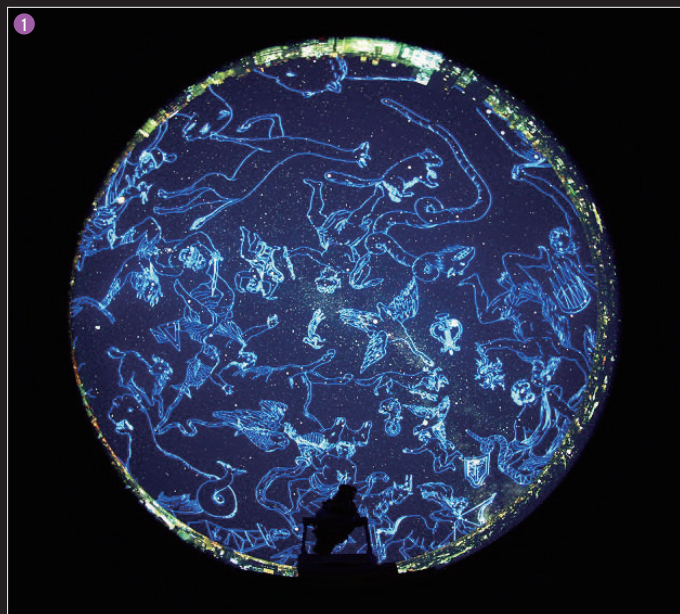
MAP A-1

This theater was rebuilt in 1955 as the theater for the *Kita-ryu* school, a prestigious *Noh* school that has been active since the Edo period. Enjoy the traditional Japanese *Noh* theater performance that unfolds against the backdrop of a magnificent work of scene-panel art depicting a pine tree.

Data

- 📍 4-6-9 Kamiosaki, Shinagawa-ku, Tokyo
- 🕒 Vary by performance
- 🗓 Irregular holidays
- 💰 Vary by performance
- 🌐 <http://kita-noh.com/>

The theater seats 385 people. Experience *Noh* performance from up close.



- ① You will be left speechless at the digital sky system.
- ② Various events such as nighttime projections are held.

Gotanda Cultural Center Planetarium

MAP B-1

The digital sky system at this incredible planetarium is capable of a 360-degree projection that will make you feel as if you're in outer space. Various events are also held.

Data

- 📍 6-5-1 Nishi-gotanda, Shinagawa-ku, Tokyo
- 🕒 Cultural Center hours: 8:30-21:30; Sun. & Hol.: 8:30-17:00
- 🗓 *Projections can only be viewed on Sat., Sun. & Hol.
- 🗓 4th Mon.
- 💰 Adult: ¥200
- 🌐 <https://shinagawa-gotanda-planetarium.com/>

Amusement Edition

Head to an entertainment spot
that's all the more charming at night.

©TOKYO MEGA ILLUMI

1



©TOKYO MEGA ILLUMI

2

1 The Edo Cherry Blossom Tunnel stretches for 100 m. 2 The Rainbow Fountain of Light. Water, light, and sound are used in this entertainment experience. 3 Works of *ukiyo-e* at the Meiji Surprise Maze. 4 The TOKYO TIME TUNNEL features themes of darkness and light.

3



©TOKYO MEGA ILLUMI

4



©TOKYO MEGA ILLUMI

Tokyo Mega Illumination MAP D-3

Horses, people, and culture come together at the incredible Oi Racecourse for nighttime entertainment in Tokyo. Enjoy the Rainbow Fountain of Light, where illuminations are interwoven with the water, and witness an aurora in Tokyo at the Aurora Forest.

Data

2-1-2 Katsushima, Shinagawa-ku, Tokyo

16:30 (17:30 from Jan. 24)-21:30 (Last admission: 20:30)

*Refer to the official website for details

Irregular holidays (Open until March 29, 2020) *Refer to the official website for details

Tickets at the door: Adult (18 or older) ¥1,000, Child (elementary, junior high, and high school students) ¥500

<https://tokyomegallumi.jp/>



1



2



3

Oi Racecourse

MAP D-3

This racecourse is famous for Tokyo City Keiba races fondly known as Twinkle Races that are held on weeknights. Don't forget to see a race unfold under the lights! Many food options are also available within the racecourse grounds.

Data

- 📍 2-1-2 Katsushima, Shinagawa-ku, Tokyo
- 🕒 Vary by event date
- 📺 Vary by event content
- 💰 Admission fee: ¥100
- 🌐 <https://www.tokycitykeiba.com/>

① Watch the intense Twinkle Race unfold as the horses dash through an illuminated course! ② The illuminations are perfect for a commemorative photo. ③ Feast on a buffet at Diamond Turn as you watch a race unfold.

BIG FUN Heiwajima

MAP D-2

This land of leisure is full of fun amusement facilities complete with a variety of restaurants. In addition to a natural hot spring facility for a day trip and indoor athletic facilities, you can enjoy movies, bowling, karaoke, discount shopping, and more.

Data

- 📍 1-1-1 Heiwajima, Ota-ku, Tokyo
- 🕒 Vary by facility
- 📺 Open 365 days
- 💰 Vary by facility
- 🌐 <https://www.big-fun.jp/>



2



1

- ① Heiwajima Starbowl is open until 5:00 a.m. (until 24:00 on Wednesdays and Thursdays).
- ② Natural Hot Springs Heiwajima is open 24 hours.



Breathtaking Waterfront Views

Japanese Houseboats & Night Cruises

Gaze at Tokyo's glittering night view in style from onboard a ship. Introducing *yakatabune* (Japanese houseboats) and cruises you can enjoy in Shinagawa.



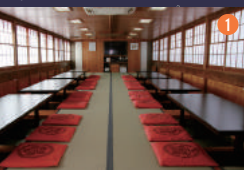
Funasei

MAP B-3

The gate creates a Japanese atmosphere that will add excitement to your trip. These ships have tatami mat floors, but passengers can stretch out their legs like sitting in a chair, so international tourists can feel at ease, too. Enjoy Japanese food and Tokyo sightseeing.

Data

- 📍 Funasei Bldg., 1-16-8 Kita-Shinagawa, Shinagawa-ku, Tokyo
- 🕒 Reception hours: 10:00-19:00
- 📅 New Year holidays and irregular holidays
- 💰 From ¥10,000 (excluding tax) *Reservations and advanced payment required
- 🌐 <https://www.funasei.com/>



- ① Tables are also available in addition to tatami mats.
- ② The remarkably fresh sashimi is popular.
- ③ Experience the stylish view of TOKYO SKYTREE and delicious cuisine.



Mikawaya

MAP B-3

Experience the sophisticated style of the Edo period through these exquisite, traditional ships with a history of over 170 years reaching back to the 19th century. The hospitality of staff members wearing traditional *happi* coats and headbands and speaking with an old Edo accent is especially popular with foreign guests.

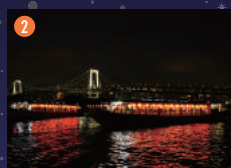
Data

- 📍 1-1-14 Higashi-Shinagawa, Shinagawa-ku, Tokyo
- 🕒 Reception hours: 9:00 AM-19:00
- 📅 Irregular holidays
- 💰 Night course from ¥11,000
- 🌐 <https://www.funayado-mikawaya.com/>



- ① Applications for shared houseboats are accepted for two or more passengers. Reservations and advanced payment are required.
- ② All ships have seating where passengers can stretch out their legs comfortably.
- ③ Freshly fried tempura is served hot onboard. Also renowned for the superb dishes prepared by their chefs.





① The *nabe* (hot pot) plan comes with all-you-can-drink refreshments. ② Passing through the Rainbow Bridge is a highlight of the houseboat cruise. ③ Go up to the observation deck for an expansive, 360-degree night view.

Nakakin

MAP B-3

All the Nakakin ships have a sky deck. Cool your body with Tokyo Bay's sea air and extraordinary night views after drinking high-quality Japanese sake. They can arrange exciting entertainment from geisha performers for passengers.

Data

- 📍 1-1-17 Higashi-Shinagawa, Shinagawa-ku, Tokyo
- 🕒 Reception hours: 10:00-19:00
- 📅 Irregular holidays
- 💰 From ¥11,000
- 🌐 <http://www.nakakin.com/>



① The ships have calm, modern Japanese interiors. ② All seats have a sky deck. An anti-rolling mechanism prevents sea sickness. ③ Feel free to bring alcohol onboard. Nothing tops a celebratory drink on deck.

Hirai

MAP B-3

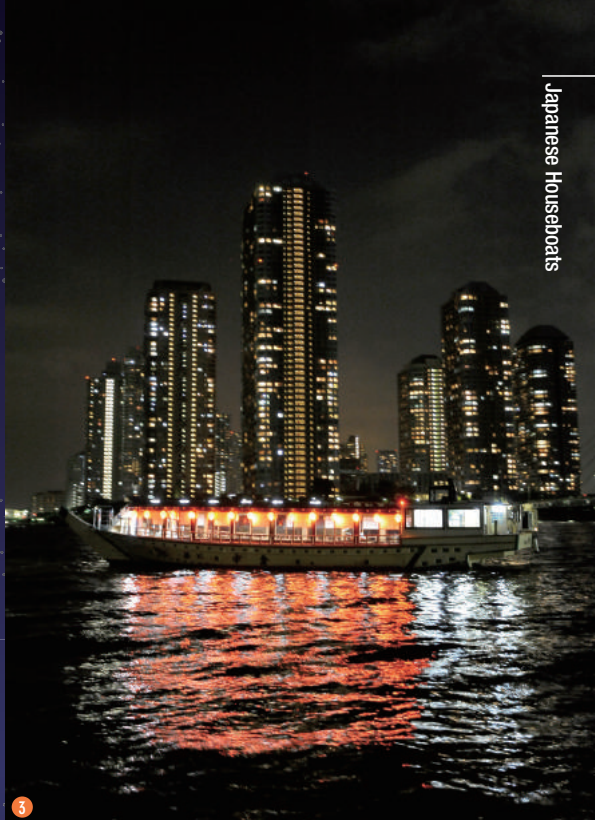
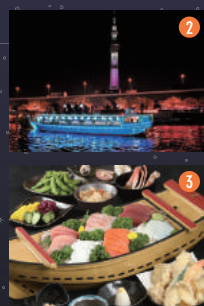
The sky-blue Hirai houseboat really catches the eye. The night view of Tokyo from the shining blue ship is unbeatable. And since there is a large screen onboard, this ship is also ideal for parties.

Data

- 📍 1-21-1 Kita-Shinagawa, Shinagawa-ku, Tokyo
- 🕒 Reception hours: 9:00 AM-19:00
- 📅 Irregular holidays
- 💰 From ¥11,000
- 🌐 <https://www.hiraimaru.com/>



① Chairs where even elderly guests can sit easily. ② Look up at the captivating sparkling view of TOKYO SKYTREE from the houseboat. ③ The classic dish is fresh *funamori* in a boat-shaped dish. Meals made with seasonal ingredients such as matsutake mushrooms are also popular.



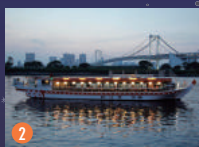
Oedo

MAP B-3

These are traditional Japanese houseboats lit by lanterns, but the interiors are modern and clean. Bidet toilets are also available, so women can feel at ease, too. Shared boats for two or more passengers are perfect for girls' nights out or dates.

Data

- 📍 1-16-1 Kita-Shinagawa, Shinagawa-ku, Tokyo
- 🕒 Reception hours: 10:00-19:00
- 📅 Irregular holidays
- 💰 Dinner from ¥11,000
- 🌐 <https://o-edo.net/>



Japanese houseboat cruises
for foreign tourists!



Tokyo Japanese Houseboat Night Cruises & Entertainment

MAP B-3

The Tennoz Canal Side Rejuvenation Association hosts Japanese houseboat cruises for foreign travelers featuring Tokyo's renowned waterfront sites such as the Rainbow Bridge and TOKYO SKYTREE. Passengers can even receive a commemorative photograph taken by a professional photographer.

Data

- 📍 Boarding area: Tennoz T-LOTUS Pier (Around 2-chome Higashi-Shinagawa, Shinagawa-ku, Tokyo — Just next to Third Waterfront Square in Tennoz-Isle, Shinagawa-ku)
- 🕒 Every Tues. from 18:00
- 💰 From ¥13,000 *Reservations required
- 🌐 http://voyag.in/tokyo_yakatabune_cruise



- ① Supreme comfort in this state-of-the-art cruise ship.
② Relish the extravagant buffet. ③ The perfect night view from beneath the Rainbow Bridge.

Zeal Cruise

MAP A-3

Chartered cruises and onboard parties are popular here, and groups from one person or more can board. From TOKYO SKYTREE in the north to Tokyo Gate Bridge in the south, fully experience Tokyo nights onboard an opulent cruise ship.

Data

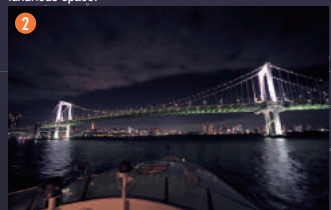
- 📍 2F Shibaura Ganpeki Bldg. (HQ),
3-21-35 Kaigan, Minato-ku, Tokyo

*Please check the website for boarding areas.

- 🕒 Reception hours: 10:00-19:00
- 📅 Irregular holidays
- 💰 From ¥3,000
- 🌐 <http://www.zeal.ne.jp/>



- ① The night view from the luxurious cruise ship is just like a scene from a movie. ② The Night Cruise departing at 21:30 is the latest cruise offered for Tokyo Bay.
③ Creative and subtle French cuisine onboard the Dinner Cruise. ④ Enjoy an extraordinary experience in a luxurious space.



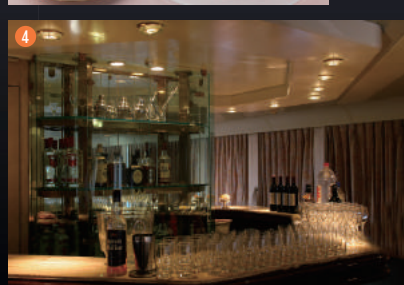
The Cruise Club Tokyo

MAP B-3

This beautifully curvaceous cruise ship is named Lady Crystal. Share this luxurious time enjoying exquisite French cuisine while gazing over the panoramic night view with someone special to you.

Data

- 📍 1F Sea Fort Square, 2-3-16 Higashi-Shinagawa, Shinagawa-ku, Tokyo
- 🕒 Reception hours: 10:00-19:00
- 📅 Irregular holidays
- 💰 From ¥4,350
- 🌐 <https://cctokyo.co.jp/>





1

Tokyo Water Taxi

MAP B-3

Enjoy feeling like you're on an amusement park ride with this popular water taxi. In addition to panoramic night views of the city, passing under the bridge illuminated by canals and rivers is also fun. Besides shared rides, private charters for various occasions are also popular.

Data

📍 2-1-11 Shibaura, Minato-ku, Tokyo (Tokyo Office)

*Please check the website for boarding areas.

🕒 Reception hours: 9:00-19:00 📅 Mon. (Tues. when Mon. is a holiday)

👥 Ride-share: from ¥500 per person for one zone;

Charter: from ¥20,000 per ship

🌐 <https://water-taxi.tokyo/>



2



3

① Feel free to bring whatever food or drink you like onboard. Restrooms and air-conditioning available. Credit cards and transportation IC cards (Suica, PASMO, etc.) can be used onboard. ② An unknown Tokyo. Touring the city's hidden waterways can only be done by boat. ③ Feel free to ask the crew when you find a place you'd like to photograph.

Decorating the Shinagawa waterfront

Check out the bright lights!

You can see beautifully illuminated scenes on the Shinagawa waterfront that vary with the seasons. Tennoz Isle is lit up in winter by the Tennoz Isle Waterfront Illuminations. Shinagawa Ward's Illuminated Waterfront Project lights up the bridges. The Meguro River riverfront is decorated with beautiful illuminations in winter.



1



2



3



4

① 2 Tennoz Isle Waterfront Illuminations (MAP: B-3) ③ Illuminated bridge (MAP: B-2, 3) *Illumination designs vary by season
④ Meguro River "Minna no Illumination" (MAP: B-2) 🌐 <http://www.minna-no-illumi.com/>

Illuminations Special Feature ➡ <https://shinagawa-kanko.or.jp/?lang=en> Shinagawa Tourist Association

Have a Drink in Local Areas!

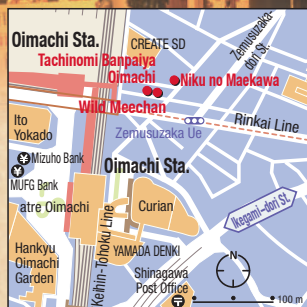
Dotted with drinking districts that radiate Shinagawa's unique atmosphere. Introducing lesser-known local areas that you'll get hooked on and keep coming back to.

Bar Areas to Check in Shinagawa

A paradise of affordable drinks!

Azuma-koji Drinking District

Bars and restaurants line the narrow street right at the East Exit of Oimachi Station, creating a retro atmosphere.



① Ham Cutlet costs ¥310 for a large portion. ② Sliced Tuna costs only ¥200. Orders come quickly. ③ You can start drinking even before sunset.



Tachinomi Banpaiya Oimachi

MAP C-2

You'll love the cheap meals at this famous standing bar with branches now located throughout Japan. One person can leave satisfied for just ¥1,000. The secret to its popularity is its quality, with meals cooked at the restaurant using minimal premade food.

Data

☐ 5-3-5 Higashi-oi, Shinagawa-ku, Tokyo
🕒 15:00-23:30; Sat., Sun. & Hol.: 13:00-23:30
☑ Open 365 days

Wild Meechan

MAP C-2

This restaurant that opened in March 2019 focuses on all-you-can-drink options. Offering an all-you-can-drink option from ¥1,200 (excluding tax) for 60 minutes or an a la carte menu for individual drinks. Sometimes sushi from Kanai Sushi upstairs is provided.

Data

☐ B1F, 5-3-5 Higashi-oi, Shinagawa-ku, Tokyo 🕒 17:00-23:30 ☑ Sun. & Hol.



① Natural Tuna with Wasabi Soy Sauce (¥1,000) (excluding tax) and Chili Con Carne Tortilla Dip (¥420) (excluding tax) ② A restaurant with a bright interior

Niku no Maekawa

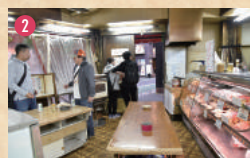
MAP C-2

Customers constantly flock to this standing bar operated by a butcher as soon as the doors open. You can choose what you like from the showcased meat dishes and get a beer out of the fridge yourself.

Data

☐ 5-2-9 Higashi-oi, Shinagawa-ku, Tokyo 🕒 16:00-21:30 (L.O. 21:15) ☑ Sun.

① Wagyu Beef Rump (¥670) and Chicken Tenderloin (¥260). They also have the Roast Pork (¥310) and Minced Meat Cutlet (¥140). ② ③ When the restaurant fills up, you'll see people drinking at the tables out front, too.



Full of original cuisine!

Gotanda Hills

The River Light Building, also known as Gotanda Hills.
Rows of famous shops hidden inside the buildings lining the river front.



Tachinomi Todaka

MAP B-2

A stylish atmosphere more like a bar than a Japanese pub. There's no printed menu, so look at the options written on the blackboard on the wall to order your meal. Each dish is quirky and creative, so you'll want to try various things.

Data

- 📍 B1F River Light Bldg., 1-9-3 Nishi-gotanda, Shinagawa-ku, Tokyo
- 🕒 18:00-L.O. 24:00
- 📞 Sun.

- ① Sweet Natto Cheese Tower (¥700) ② The Sea Urchin on the Boiled Egg (¥700) has a rich flavor. ③ The restaurant's name includes "tachinomi" (standing bar) but chairs are available.



Kininaru Yome Deluxe

MAP B-2

A restaurant that serves homestyle cooking made by the so-called "yome" (wife). They prepare over ten types of daily dishes, and the menu changes according to the owner's mood and ingredients. It's also fun to choose from the cuisine laid out on platters.

Data

- 📍 B1F River Light Bldg., 1-9-3 Nishi-gotanda, Shinagawa-ku, Tokyo
- 🕒 18:00-2:00 of the following day (sometimes even later)
- 📞 Sun. (Irregular holidays, Sun. & Hol possible by consultation)
- 🌐 <http://yome.tokyo/>

- ① Today's Soup for Current Price from ¥150 (excluding tax)
② Counter seats with the platters spread out in front of you
③ Today's Dishes Assortment ¥500-¥1,000 (excluding tax)



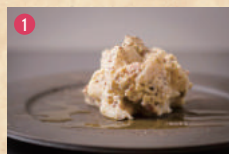
Bar Lagu

MAP B-2

Opened in 2017. This is a bar equipped with the wine cellar, which offers craft beers as well as over 30 types of craft gin, but it has a serious dining menu, too. Open until 3 a.m.

Data

- 📍 1F River Light Bldg., 1-9-3 Nishi-gotanda, Shinagawa-ku, Tokyo
- 🕒 18:00-3:00 of the following day
- 📞 Sun.



- ① Potato Salad That Goes Well with Alcohol (¥600) (excluding tax) ② Counter and table seats available ③ Beef and Red Wine Stew (¥1,600) (excluding tax) that you'll want to pair with wine





An alcohol and meat paradise!

Shinagawa Station Konan Exit

A 1-2 min. walk from the modern buildings around the East Exit of Shinagawa Station.
Try exploring these alleys that tempt you to get lost in them.



1 Spicy Beef Tendon Stew (¥680) (excluding tax) 2 A popular restaurant that is always full of customers. 3 Specialty Horumon-yaki (¥680) (excluding tax) made with beef offal from a female calf



Izakaya Rojiura Shinagawa MAP A-3

One of the long-established restaurants in the area, it is always packed. But since there are also seats on the second floor, customer turnover is quick. The Spicy Beef Tendon Stew made by stewing high-quality meat from the neighborhood butcher with Korean spices is popular.

Data

2-2-4 Konan, Minato-ku, Tokyo
Lunch: 11:00-14:00, Dinner: 17:00-24:00
Open 365 days
<https://rojiura-sinagawa.gorp.jp/>

Tachinomidokoro Kasuga MAP A-3

This restaurant offers a selection of foods that will keep you drinking, such as stew made with fresh meat and stir-fried offal, etc. You'll want to enjoy them with makgeolli, or Junnama Makko-bee that combines makgeolli and beer.

Data

2-2-5 Konan, Minato-ku, Tokyo
Lunch: 11:30-13:30, Dinner: 17:00-24:00
Sat., Sun. & Hol.



1 Stir-fried Pork Belly with Garlic (¥500) (excluding tax) 2 There are chairs at lunch time, but dinner is standing only. 3 Beef Tendon Stew (¥500) (excluding tax) and Junnama Makko-bee (¥580) (excluding tax)

Izakaya Mikasa MAP A-3

Motsu (offal) is their signature item, and they offer not the common *motsu-yaki*, but stir-fried *motsu* with different flavors depending on the type of offal meat. The Stir-fried Beef Abomasum eaten with a traditional sauce passed down over many years is popular.

Data

2-2-4 Konan, Minato-ku, Tokyo
18:00-L.O. 22:30
Sun. & Hol.



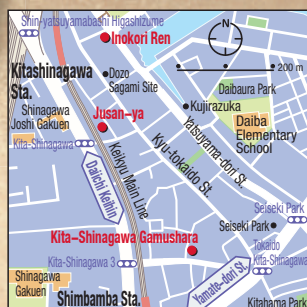
1 Stir-fried Beef Abomasum (¥800) (excluding tax) eaten with sweet and spicy sauce 2 Simple boiled menu, Horumon Ponzu (¥500) (excluding tax) 3 The 1F has counter seating and the 2F has tatami mats.

Relax in a traditional Japanese house

Shinagawa-shuku on the Kyu-tokaido Street

The first inn town on the Tokaido Street was in Shinagawa.

Traces of bygone days remain along the former Tokaido Street (Kyu-tokaido Street).



Inokori Ren MAP B-3

The renovated building used to be an eel restaurant and has a nostalgic and modern atmosphere. The cuisine is creative Italian using the finest ingredients, with a substantial wine collection from Japan, Israel and California, etc.

Data

☐ 1-22-4 Kita-Shinagawa, Shinagawa-ku, Tokyo

🕒 Lunch: 11:30-14:00 (L.O. 13:30), Dinner: 17:00-23:00 (L.O. 22:00); Sat.: 17:00-22:00 (L.O. 21:00)

☑ Sun.

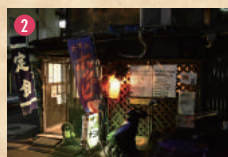
🌐 <http://www.ren-shinagawa.com/>



❶ Assorted Meat Antipasto (¥2,500) (excluding tax) and Escargots-style Mussels (¥900) (excluding tax) ❷❸ The building of former eel restaurant that had appeared in rakugo performances has been renovated.



❶ The thick noodles of Kuroishi Sauce Yakisoba (¥750) with many toppings ❷ An old building just outside Kitashinagawa Station ❸ A restaurant interior with a nostalgic atmosphere. Available seating: 20+



Kita-Shinagawa Gamushara MAP B-3

A popular *kominka izakaya* (Japanese pub in a traditional Japanese house) operating for ten years in these charming shopping streets in Kita-Shinagawa. It offers a vast menu of items such as their famous fried skewers eaten with three different types of sauce or their creative cuisine, etc.

Data

☐ 2-9-27 Kita-Shinagawa, Shinagawa-ku, Tokyo

🕒 Lunch: 11:30-13:30, Dinner: 17:00-23:00 (L.O. 22:30); Sat., Sun. & Hol: 17:00-23:00 (L.O. 22:30)

☑ Irregular holidays

❶ The open kitchen counter. The 2F has 25 table seats and parties are also possible. ❷ The Natural Raw Tuna is an incredible deal at ¥780.



❸ The restaurant's renowned Fried Skewers made with outstanding ingredients start at ¥130 ❹ Delicious! Shibaura Horumon Motsu Nabe from ¥1,080

Jusan-ya MAP B-3

A Japanese pub with a retro look reminiscent of the Showa period. The Tsuyu Yakisoba, a regional style of *yakisoba* from Aomori eaten with *tsuyu* dipping soup, is popular. This thick, richly flavored dipping soup is the perfect way to cap off a night of drinking.

Data

☐ 1-25-9 Kita-Shinagawa, Shinagawa-ku, Tokyo

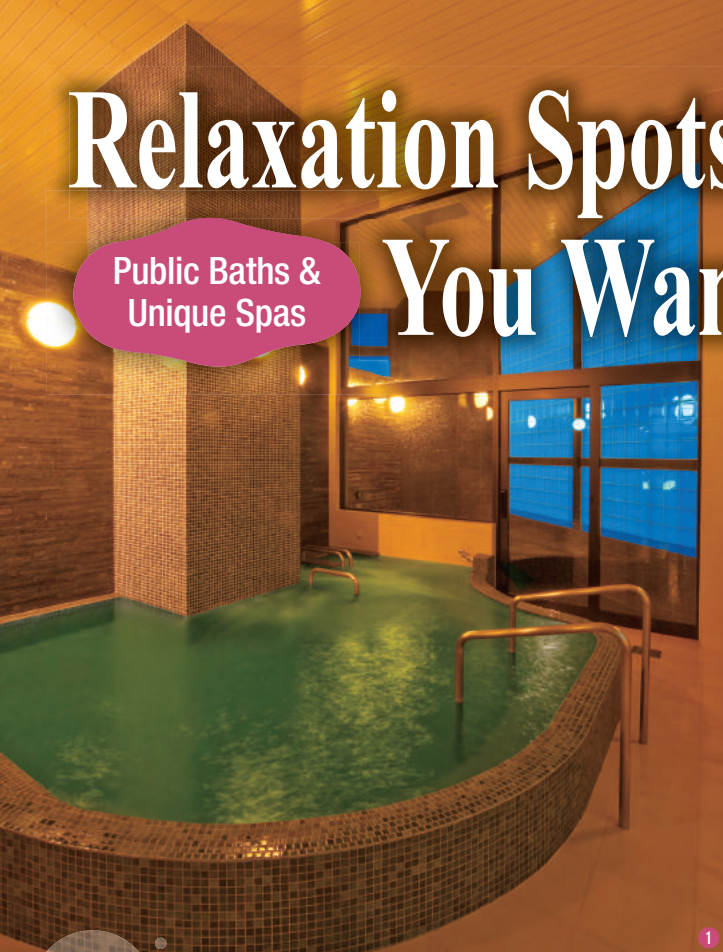
🕒 Lunch: 11:30-13:00, Dinner: 17:00-23:00

☑ Sun. & Hol.

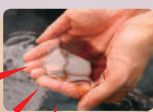
Relaxation Spots You Want to Go

Public Baths & Unique Spas

From traditional public baths to modern spas, you'll find the ideal place to relax your mind and body.



Black water!



Tenjin-yu

MAP B-3

Enjoy the ultimate healing experience in a natural hot spring bath in luxurious, modern surroundings. The barrier-free building offers a wide range of facilities including cribs, dressers and massage chairs.

Data

📍 2-23-9 Kita-Shinagawa, Shinagawa-ku, Tokyo
🕒 15:00-24:30 (Last admission: 24:00)
🗳️ Fri.
💰 Adult: ¥470, etc. (Range of prices)
🌐 <http://www.tenjinyu.com/>

① Simple, beautifully tiled public bath ② Rich in minerals, *kuroyu* (black spring water) has excellent heat and moisture retention effects. ③ Indoors there is also a whirlpool bath and jacuzzi bath.



① New body-temperature, high-concentration carbonate spring water bath ② Healing lounge with semi-private box rooms ③ A Tokyo first! Immersive projection mapping of a Finnish-style sauna

Ofuro no Osama Oimachi

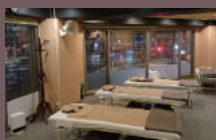
MAP C-2

This community-based *super sento* (public bathhouse with various facilities) recently underwent renovation in November 2019. Conveniently located just outside the station, it offers a spacious open-air bath as well as a variety of other baths.

Data

📍 Hankyu Oimachi Garden, 1-50-5 Oi, Shinagawa-ku, Tokyo
🕒 9:30-8:30 of the following day (Last admission: 7:30 of the following day)
🗳️ Open 365 days
💰 Adult: ¥1,380, etc. (Range of prices)
🌐 <https://www.ousama2603.com/shop/oimachi/>

Relax with a late night massage Let professional hands refresh your tired body!



Hogushiya Gotanda Nishiguchi MAP B-2

Popular with women for its safe, open surroundings. Provides customized massages.

Data
 ☑ 2F 8-1-16 Nishi-gotanda, Shinagawa-ku, Tokyo
 ⌚ 10:00-4:00 of the following day
 ☑ Open 365 days
 💵 From ¥2,800 per 30 min.
 🌐 <https://www.toho-massage.com/salon/gotanda-west/>



HOGUSHI SALON YURURI Oimachi MAP C-2

Opened in March 2019. Provides customized massages in mainly white surroundings that exude a sense of cleanliness.

Data
 ☑ 6-15-26 Minami-Shinagawa, Shinagawa-ku, Tokyo
 ⌚ 11:00-24:00 (Last reservation: 23:30)
 ☑ Open 365 days
 💵 Kneading massage: from ¥1,600 per 30 min. (excluding tax), etc. (Range of prices)
 🌐 <https://www.yururioimachi.com>



Health Salon CRAFT MAP B-1

Proud of its massage therapists' skills and more than 20 years' track record. Recommended for fundamental pain relief.

Data
 ☑ 2F Plaisir Tokiwa, 4-4-1 Ebara, Shinagawa-ku, Tokyo
 ⌚ 12:00-3:00 of the following day (Last admission: 2:00 of the following day; Wed.: 12:00-23:00 (Last admission: 22:00))
 ☑ Irregular holidays
 💵 Manipulation & chiropractic: ¥3,000 per 30 min., etc. (Range of prices)
 🌐 <http://craftsalon1101.com>

Togoshi Ginza Onsen MAP B-1

Renovated in 2007, the design is a fusion of traditional and modern styles. You can enjoy a variety of baths including the popular *kuroyu* (hydrogen carbonate, cold mineral spring) that leaves skin feeling silky smooth.

Data
 ☑ 2-1-6 Togoshi, Shinagawa-ku, Tokyo
 ⌚ 15:00-1:00 of the following day;
 Sun. & Hol.: 8:00-12:00, 15:00-1:00 of the following day
 ☑ Fri.
 💵 Adult: ¥470, etc. (Range of prices)
 🌐 <http://togoshiginzaonsen.com>

Tsukino-yu and Yono-yu baths alternate between men and women on a daily basis.



Nakanobu Onsen Matsuno-yu MAP C-1

This public bath has a Showa-era atmosphere and an impressive tiled dormer gable roof with yellow border. The Japanese palace-style building features high ceilings that give a sense of openness. A key attraction is the silky-smooth feel of the natural spring water, both hot and cold.

Data
 ☑ 6-23-15 Togoshi, Shinagawa-ku, Tokyo
 ⌚ Tues.-Sat. & Hol.: 15:00-1:00 of the following day; Sun.: 10:00-24:00
 ☑ Mon. (if Mon. is a holiday, closed the following day)
 💵 Adult: ¥470, etc. (Range of prices)
 🌐 http://www.shinagawa1010.jp/list/matsunoyu_b.html

The huge painting of Mt. Fuji on the wall is spectacular.



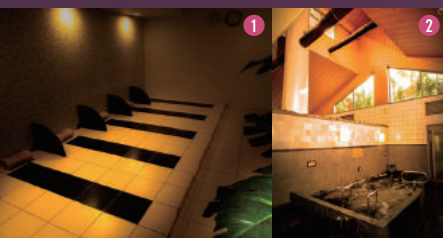
Musashi-koyama Onsen Shimizu-yu MAP B-1

The entrance fee lets you enjoy two kinds of natural hot springs. The *kogane* (golden) spring water from a depth of 1,500 m has a high iodine content and is certified as a medical treatment spring. The fine, smooth *kuroyu* is reputed to be good for the skin.

Data
 ☑ 3-9-1 Koyama, Shinagawa-ku, Tokyo
 ⌚ 12:00-24:00; Sun.: 8:00-24:00
 ☑ Mon. 💵 Adult: ¥470, etc. (Range of prices)
 🌐 <http://www.shimizu-yu.com>



- 1 Women's natural stone bedrock bath
- 2 Indoor *kuroyu* bath with high concentration nanobubbles
- 3 Enjoy the luxury of two kinds of natural springs in the open-air baths.



Night Spots that Attract Travelers from Overseas

Dining & Shopping Selection

Shinagawa at night offers many attractions for foreign travelers. Here are the top 4 must-go spots from a questionnaire on sightseeing in Shinagawa at night.



T.Y.HARBOR

MAP B-3

Must-go rating
69.6%

This huge 350-seat capacity brewery restaurant is located in a renovated warehouse overlooking the canal. Enjoy modern American food with craft beers from the adjoining brewery.

Data

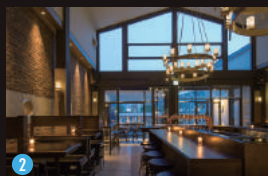
2-1-3 Higashi-Shinagawa, Shinagawa-ku, Tokyo

Lunch: 11:30-L.O. 14:00, Dinner: 17:30-L.O. 22:00;

Sat., Sun. & Hol.: 11:30-L.O. 22:00; River Lounge: 11:30-L.O. 23:30

Open 365 days

<https://www.tysonsjp/tyharbor/>



1 River Lounge floating on the canal in front of the restaurant 2 Spacious, high-ceilinged interior. Terrace seating available 3 Craft beers and craft beer cocktails 4 T.Y. meat combo plate (¥6,800)

1 2 Spacious family-friendly interior 3 Akamaru Modern (¥820) (excluding tax). Enjoy a change in taste by adding flavoring oil and spicy miso to the soup.



IPPUDO

Gotanda Higashiguchi

MAP B-2

Must-go rating
69.5%

This ramen restaurant was founded in 1985 in Hakata, the birthplace of ramen. Its taste has won a following among foreigners and it has expanded abroad. Shiromaru Classic and Akamaru Modern have been popular since they were first launched in 1996.

Data

2F Kitahara Bldg., 1-14-14 Higashi-gotanda, Shinagawa-ku, Tokyo

11:00-2:00 of the following day; Fri.: 11:00-3:00 of the following day;

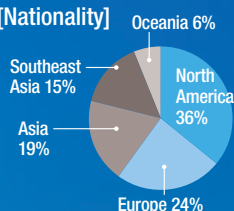
Sun. & Hol.: 11:00-1:00 of the following day

Open 365 days

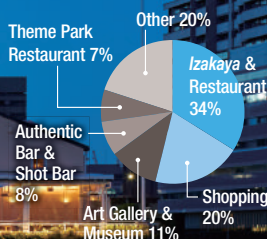
<https://www.ippudo.com/>

In summer 2019, we conducted a questionnaire of overseas guests at hotels in Shinagawa on night life in the city and nighttime sightseeing. The top-rated must-go spots are *Izakaya* (Japanese-style pubs) and restaurants followed by shopping. The trend is toward interest in spots with particularly Japanese characteristics.

[Nationality]



[Must-go Night Spots]



1



AEON STYLE SHINAGAWA SEASIDE

MAP C-3

Must-go
rating
67.4%

Shopping center for everything from food, fashions and cosmetics to stationery, electrical appliances and everyday items. It consists of eight stories above ground and two basement floors, with car parking on the 4F and above. The center is popular with overseas travelers.

Data

4-12-5 Higashi-Shinagawa, Shinagawa-ku, Tokyo

9:00-23:00; Food Section: 8:00-24:00 (Vary by store);

Tax Refund Counter: 10:00-20:00 (Multilingual video interpreting service is available)

Open 365 days

<https://www.aeon.com/>



1



2



3

1 Cosmetic brand section 2 Eye drops that foreign tourists buy by brand 3 Sweets and cup noodles make popular gifts



1



Fishing Restaurant ZAUO Meguro

MAP A-1

Must-go
rating
60.9%

Located right outside Meguro Station, this is a restaurant where you can eat the fish you catch yourself in one of the two tanks. Serves all kinds of Japanese food as well as fresh seafood dishes. You can see the fish being prepared in the glass-walled kitchen.

Data

5F Sun Felista Meguro,
2-27-1 Kamiosaki, Shinagawa-ku, Tokyo

17:00-23:00 (L.O. 22:00);
Sat., Sun. & Hol.: 11:30-23:00 (L.O. 22:00)

Irregular holidays

<http://www.zauo.com/>



2



3

1 Choose how you want the fish you have caught to be served, such as sashimi or grilled with salt! 2 Takarabune Sashimi Plate is only available Mon.-Thurs. One plate per group. 3 Menu includes set meals and Hakata specialties as well as sushi and lobster sashimi.

Shop at Night Without Worrying About the Time

Shinagawa Night
Shopping

Here are some well-stocked shopping spots that are open till late!

Until 2:00



TSUTAYA Nishi-gotanda MAP B-2

CD/DVD sales and rentals are on the right and the bookstore is on the left side of the street about 5 min. walk from Gotanda Station West Exit. The store stocks a wide selection of video games and comics and everything you could want entertainment-wise.



Data

1F Meiji Yasuda Seimei Gotanda Bldg., 2-27-4 Nishi-gotanda, Shinagawa-ku, Tokyo

CD/DVD Shop & Rentals: 10:00-2:00 of the following day; Bookstore: 9:00-24:00 (Sun. & Hol.: 10:00-24:00) Open 365 days <https://tsutaya.tsite.jp/>

Until 23:00



BOOKOFF PLUS Nishi-gotanda MAP B-2

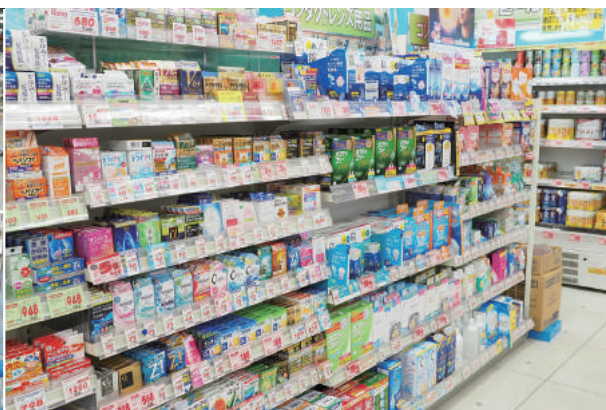
Large store engaged in buying and selling of books, CDs, DVDs, digital appliances, brand goods and more. Video games and books are on 1F and menswear, DVDs and comics are on 2F.



Data

2-29-5 Nishi-gotanda, Shinagawa-ku, Tokyo 10:00-23:00; Menswear: 10:00-22:00 Open 365 days <https://www.bookoff.co.jp/>

Until 23:00



TSURUHA Drug

Some chain stores of TSURUHA Drug in Shinagawa open till 23:00. It sells cosmetics, everyday items, soft drinks and alcohol as well as medicines.



Data

<https://www.tsuruha.co.jp/>

[Oi 1-chome] MAP C-2

Brillia Oimachi La Vie En Tower,
1-16-2 Oi, Shinagawa-ku, Tokyo

9:00-23:00 Open 365 days

[Hatanodai Minamiguchi] MAP C-1

5-5-6 Hatanodai, Shinagawa-ku, Tokyo

9:30-23:00 Open 365 days

24/7



Niku no Hanamasa Oimachi

MAP C-2

Food supermarket where products come in huge package sizes. Even used by restaurant and food-related industry professionals. It has a well-stocked meat corner and also sells original products such as dressings, snacks and alcohol.



Data

B1F, 5-2-3 Higashi-oi, Shinagawa-ku, Tokyo 24 hours a day Open 365 days <http://www.hanamasa.co.jp/>

24/7

SEIYU Omori

MAP D-2

The shopping building is right in front of you as you come out of Omori Station. It sells food, everyday items, fashions, medicines and more. Electrical appliances and other specialty stores are on 3F and 4F and restaurants and cinema are on 5F.

Data

6-27-25 Minami-oi, Shinagawa-ku, Tokyo 24 hours a day (with some exceptions) Open 365 days <https://www.seiyu.co.jp/>



Nighttime Events to Enjoy Throughout the Year in Shinagawa

Night Events in Shinagawa

Spring

Late March to Early April

Cherry Blossoms along Meguro River

MAP B-2

Data

📍 From Ohashi, Meguro-ku to Nishi-gotanda, Shinagawa-ku, Tokyo
🌐 <https://shinagawa-kanko.or.jp/?lang=en>

Every year during the cherry blossom season, the banks of the Meguro River which runs through Shinagawa are lit up. The rows of mainly Somei-yoshino cherry trees stretching for 3.8 km are a magnificent sight. Enjoy the cherry blossoms in full bloom and the illuminations at leisure.

Autumn

Late November to Early December

Togoshi Park Autumn Leaf Illuminations

MAP C-2

Data

📍 Togoshi Park, 2-1-30 Yutaka-cho, Shinagawa-ku, Tokyo
🌐 <https://shinagawa-kanko.or.jp/?lang=en>

This popular park in Shinagawa was built on the former site of the Hosokawa family, lords of the Kumamoto Domain. The beautiful colored maple leaves in the Japanese garden are lit up in autumn. The Himalayan cherry trees are at their best at this season, so you can enjoy autumn leaves and cherry blossoms at the same time.

Shinagawa offers an array of night events throughout the year! Enjoy glittering seasonal charms.

Check out Shinagawa's night events!

Shinagawa Tourism Association
<https://shinagawa-kanko.or.jp/?lang=en>



Shinagawa

Summer

June to September

Grand Café Beer Garden

MAP B-3

Data

Dai-ichi Hotel Tokyo Seafort, 2-3-15 Higashi-Shinagawa, Shinagawa-ku, Tokyo
<https://www.hankyu-hotel.com>

Every year a beer garden opens in Grand Café in Dai-ichi Hotel Tokyo Seafort just outside of Tennozu Isle Station. Nothing beats a beer in luxurious surroundings by the side of Tennoz Canal.

Winter

Early February to Mid-March

Nishikoiyama Illuminations

MAP B-1

Data

Nishi-koyama Station Square, 6-2-1 Koyama, Shinagawa-ku, Tokyo
<https://www.facebook.com/nishikoiyama/>

Illuminations are held in Nishi-koyama, once a flourishing red-light district, for Valentine's Day and White Day. The concept is "Nishi-koyama's Streets of Love." Tens of thousands of lights celebrate the couples who come to visit.

Useful Information

Here is some useful information for enjoying Shinagawa, ranging from access to sightseeing spots.

● Access to Shinagawa

☑ From Haneda Airport

Train

Haneda Airport International Terminal Sta. → Shinagawa Sta.

▶ 11 min. by Keikyu Line

Haneda Airport Domestic Terminal Sta. → Shinagawa Sta.

▶ 14 min. by Keikyu Line

Limousine Bus

Haneda Airport ⇄ Hotels in Shinagawa Area ▶ Required time: Approx. 30 min.

HP https://www.limousinebus.co.jp/areas/detail/hnd/ebisu_shinagawa/for

Haneda Airport ⇄ Osaki Sta. ▶ Required time: Approx. 30 min. (Approx. 45 min. to/from International Terminal) HP <http://www.keikyu-bus.co.jp/airport/h-osaki/>

☑ From Narita Airport

Train

Narita Airport → Shinagawa Sta.

▶ 1 hr. 10 min.

by JR Narita Express

Limousine Bus

Narita Airport ⇄ Shinagawa Sta. Konan Exit & Hotels in Shinagawa Area ▶ Required time: Approx. 90 min. HP https://www.limousinebus.co.jp/areas/detail/nrt/ebisu_shinagawa

Narita Airport ⇄ Osaki Sta. ▶ Required time: Approx. 75 min.

HP <https://travel.willier.co.jp/narita-osaki/>

☑ From Main Terminal Stations

Tokyo Sta. → Shinagawa Sta. ▶ 8 min. by JR Tokaido Line

Shibuya Sta. → Shinagawa Sta. ▶ 12 min. by JR Yamanote Line

Shinjuku Sta. → Shinagawa Sta. ▶ 19 min. by JR Yamanote Line

Ikebukuro Sta. → Shinagawa Sta. ▶ 28 min. by JR Yamanote Line

Rent and return a bike at any docking port you like!

Shinagawa Community Cycle

You can rent and return a bike at any docking port within 10 Tokyo wards, including Shinagawa. Handy for getting around.

HP <https://docomo-cycle.jp/shinagawa/en/>



● Tourist Information Offices

Shinakan PLAZA

MAP C-2



Data

☐ 1-14-1 Oi, Shinagawa-ku, Tokyo

☑ 9:30-17:00 ☑ Sun. & Hol., New Year holidays

HP <https://shinagawa-kanko.or.jp/?lang=en>

info & café SQUARE

MAP B-1



Data

☐ 1F Square Ebara, 4-5-28 Ebara, Shinagawa-ku, Tokyo

☑ 10:00-17:00

☑ Wed., New Year holidays HP <https://shinagawa-kanko.or.jp/tourist-information/>

Shinagawashuku Koryukan Honshuku Oyasumidokoro

MAP B-3



Data

☐ 2-28-19 Kita-Shinagawa, Shinagawa-ku, Tokyo

☑ 10:00-16:00

☑ Mon. (Tues. when Mon. is a holiday), summer season, New Year holidays

HP <https://shinagawa-kanko.or.jp/tourist-information/>

Tourist Information Center “TOIYABA”

For foreign
tourists

MAP B-3



Data

☐ 1-22-16 Kita-Shinagawa, Shinagawa-ku, Tokyo

☑ 7:00-10:00, 16:00-22:00

☑ Open 365 days HP <https://shinagawa-kanko.or.jp/tourist-information/>

*Baggage storage service available (¥500 per piece)

Get the latest information about Shinagawa!

App

Wa! Shinagawa Tourist Spots (♥kokosil Shinagawa)

Sightseeing app with AR (augmented reality) function for information about Shinagawa tourist spots, cultural heritage, film locations, etc. Text and audio guide available in English, Chinese (traditional and simplified) and Korean.

HP <https://home.shinagawa.kokosil.net/en/>



Free Wi-Fi

SHINAGAWA FREE Wi-Fi

Free Wi-Fi provided by Shinagawa Ward. Available in public facilities, major stations and parks in Shinagawa. The connected web portal and authentication screen can be displayed in English, Chinese (traditional and simplified) and Korean.

HP https://www.city.shinagawa.tokyo.jp.e.ke.hp.transer.com/PC/kuseizyoho/kuseizyoho-siryo/kuseizyoho-siryo-free_wifi/index.html



Website

Shinagawa Tourism Association

Official website of Shinagawa Tourism Association. Get the latest information on Shinagawa sightseeing spots, model routes, little known dining spots, event information and much more! (Available in English, Chinese (traditional and simplified) and Korean)

HP <https://shinagawa-kanko.or.jp/?lang=en>



shinagawonder Instagram

Spread the word about photogenic Shinagawa's attractions! HP <https://www.instagram.com/shinagawonder/>



Shinagawa Tourism Association YouTube

Videos of tourist spots, festivals and other events are available.

HP <https://www.youtube.com/channel/UCMN09z0RT10ss1nrnj264vjg>

