



HOTEL NEW OTANI TOKYO

Your Best Choice for a Successful Event



The New Otani



HOTEL NEW OTANI TOKYO



Hotel New Otani Tokyo opened in 1964 to welcome guests visiting our city for the 18th Olympic Games. Since then, it has led the hotel industry in our country, serving as the main venue for three G7 Summit meetings and welcoming dignitaries from around the world. With a diverse selection of guest rooms, 38 restaurants and bars, 33 banquet rooms, shopping arcades, and first-class service and hospitality, Hotel New Otani Tokyo offers the best platform to lead your event to success.



At the time of opening in 1964



The 12th G7 Summit Meeting, 1986



Official Dinner,
Imperial Enthronement Ceremony, 1990



Princess Diana of UK
at the Enthronement Ceremony dinner

JAPANESE GARDEN

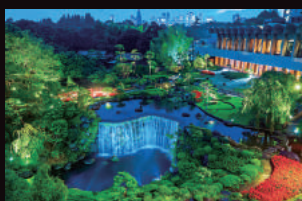


The hotel's 10-acre Japanese garden boasts a history of more than 400 years, and in the past has been the property of prominent samurai lords. Despite its location in the center of Tokyo, the garden's six-meter-high waterfall, koi pond, verdant trees and seasonal flowers offer a moment of serenity and repose to those who stroll its paths.



Best Free Attractions

The Japanese garden at Hotel New Otani Tokyo has ranked #8 on TripAdvisor's "Best Free Attractions in Japan" list of 2017



Facilities

A multitude of shops, services and facilities enrich the guests' stay.

The hotel complex is like a town in itself, with innumerable facilities and things to do



The outdoor Garden Pool is the largest hotel pool in central Tokyo and opens during the summer and holidays in early May. Private events can be held on certain days.



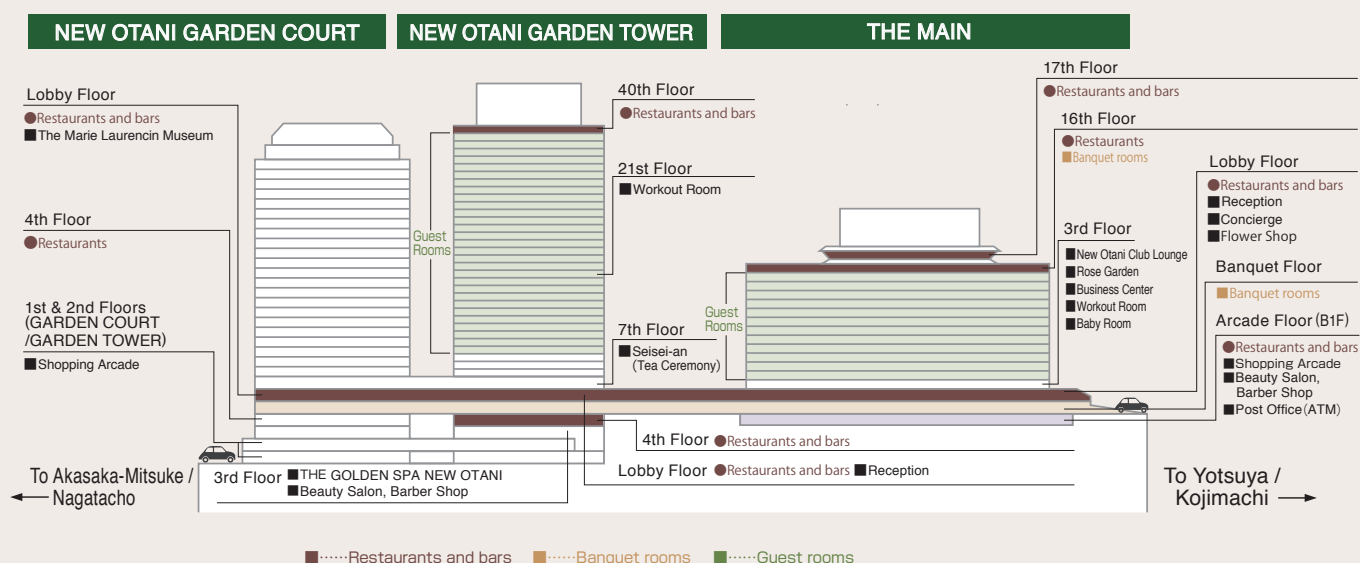
There are six medical/dental clinics on-site, as well as two drug stores. There is also a post office with an ATM that dispenses Japanese yen from your overseas bank account.



Tea ceremony experience is available in "Seiseian" located on the 7th floor of the GARDEN TOWER. (On certain days of the week only. Non-Japanese speakers are welcome.)



The concierge desk provides support to staying guests including tourist information, arrangements for tickets and reservations, etc., in various languages.



Eco-friendliness, safety, and comfort are all part of New Otani's hospitality



Seismic Upgrade

The Main building renovated in 2007, as well as the Garden Tower and Garden Court, are all diagnosed by certified experts to have the seismic adequacy to withstand earthquakes of upper 6.

Groundwater Treatment Plant

Abundant groundwater drawn from within premises of the hotel is purified to drinkable quality at an advanced water treatment plant installed in 2009. The plant has a daily capacity of 350 tons, which amounts to three days' worth of drinking water for 9,700 households, and is commissioned by the local government to contribute in times of disasters.

Compost Plant

All raw refuse from our kitchens goes to the compost plant within the hotel grounds. It is then dried and fermented to produce fertilizer that is used at the hotel's contracted farms. The hotel purchases vegetables to be used in our kitchens from these farms, completing the recycle chain and realizing eco-friendliness and customer satisfaction at the same time.

Wooden Water Tanks

Water tanks made from 7cm-thick American cypress wood planks are installed throughout the Hotel to supply water to guest rooms and restaurants. Their natural anti-bacterial quality produces safe and clear-tasting water.

Medical Facilities

The hotel complex houses various clinics, a dentist, and a pharmacist that can deal with minor medical emergencies. For extreme emergencies, the assistant manager is on a 24-hour shift and will provide necessary assistance according to the situation.

Health and Beauty

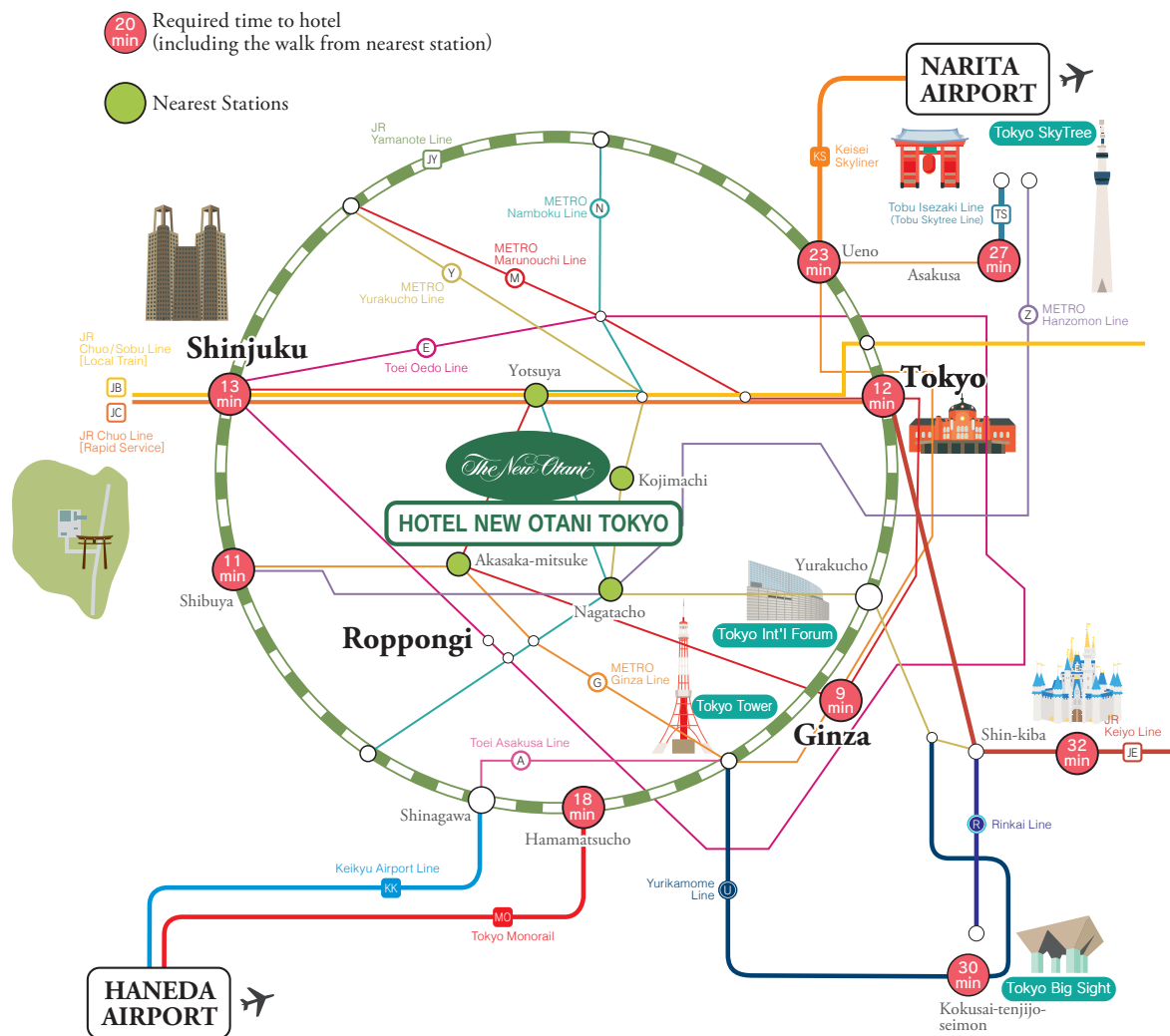
A workout room equipped with exercise equipment is open to staying guests free of charge. A sports club, spa, aesthetic salons, hair and nail salons are also within the building. The nearby area that includes the Imperial Palace and State Guest House is popular among those who enjoy jogging.

A Wide Array of Facilities

A convenience store, post office, bank ATM, travel agent, florist shop, and an extensive assortment of other facilities offer an even more comfortable and pleasant stay.

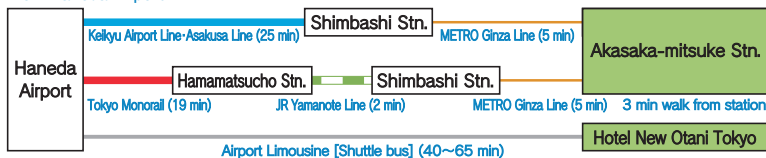
Access

Hotel New Otani Tokyo is located in the center of the city, with four stations on six railway lines nearby providing convenient access to areas throughout Tokyo.

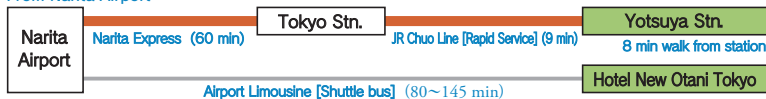


Access from Airports

From Haneda Airport

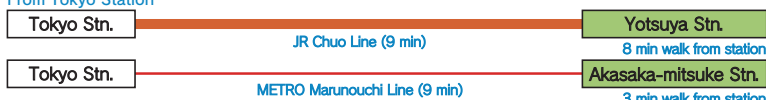


From Narita Airport



Access by Shinkansen (bullet train)

From Tokyo Station



From Shinagawa Station



Access by taxi

By taxi



Nearest Stations

[Akasaka-mitsuke] METRO Ginza & Marunouchi Lines, 3 min
 [Nagatacho] METRO Hanzomon & Namboku Lines, 3 min
 [Yotsuya] JR Chuo-Sobu Line, METRO Marunouchi & Namboku Lines, 8 min
 [Kojimachi] METRO Yurakucho Line, 6 min



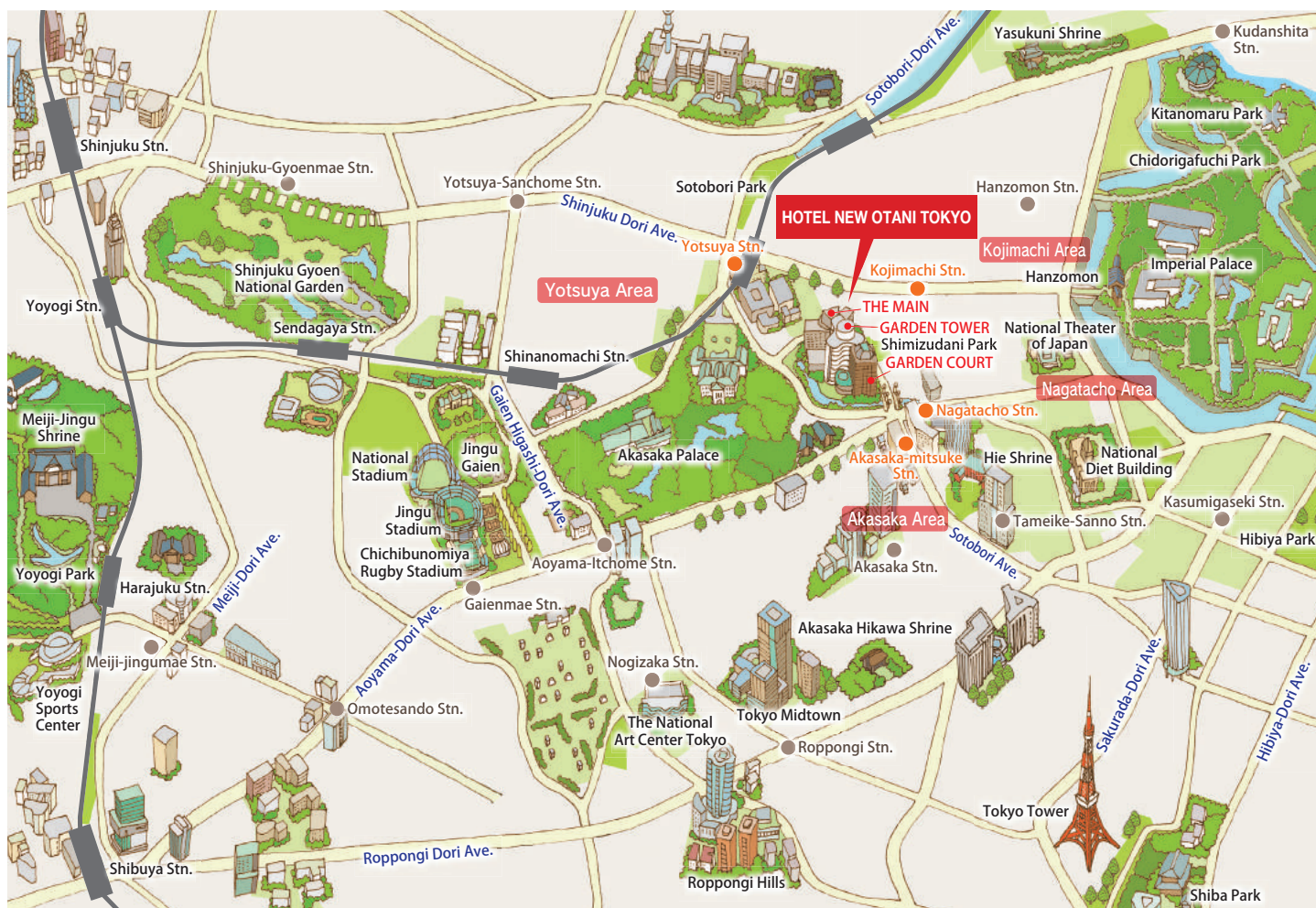
Parking

A total of 760 parking spaces are available within the complex. (Normal fee ¥500/30 min, free of charge for staying guests.) Bus spaces also available.

All times are approximate and depend on traffic conditions, etc.

Location

Hotel New Otani Tokyo is surrounded by four major areas within the city, each with distinctive characteristics and all within walking distance.



Akasaka Area

Places of Interest

Hie Shrine, Akasaka Sacas (theaters, restaurants, and shops), etc.



Hie Shrine

Yotsuya Area

Places of Interest

State Guest House, Akasaka Palace, etc.



State Guest House

Nagatacho Area

Places of Interest

National Diet Building, National Theater, etc.



National Diet Building

Kojimachi Area

Places of Interest

Shimizudani Park, Imperial Palace, etc.



Imperial Palace (Chidorigafuchi Moat)

The history of Kioi-cho

The area where Hotel New Otani Tokyo stands is known as a historic neighborhood where three prominent samurai families once resided. Many historic sites are located in the vicinity, and the hotel's onsite Japanese garden showcases numerous ancient stone lanterns and tree fossils.



Yonetaro Otani, founder of Hotel New Otani, was formerly a sumo wrestler before he began his career as an entrepreneur.

Guest Rooms

Three diverse domains house a multitude of room types that cater to each and every need.

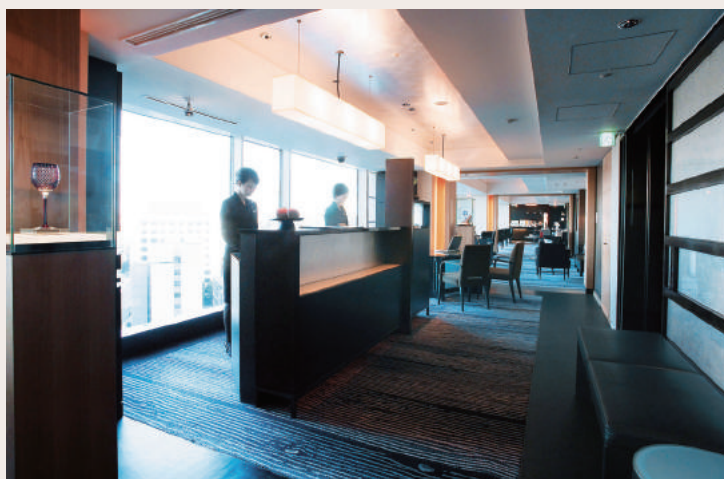
*More room types are available. Please inquire. *Twin-bed rooms are also available in each category.



EXECUTIVE HOUSE ZEN

Ultimate luxury in harmony with nature

EXECUTIVE HOUSE ZEN consists of 87 smartly appointed rooms located on the 11th and 12th floors of “THE MAIN” building at Hotel New Otani Tokyo. The fundamental design of sophisticated décor is guided by the spirit of Zen—awakening one’s inner nature, compassion and wisdom. The “savoir-faire” of our experienced staff will welcome every guest with warm-hearted hospitality.



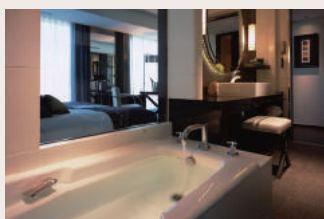
Standard



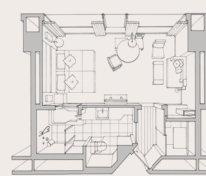
36m²/387.5ft²



Deluxe



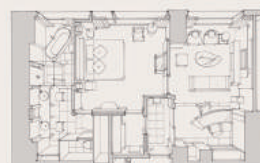
45m²/484.3ft²~



Suites



67m²/721.1ft²~



Hospitality at EXECUTIVE HOUSE ZEN

- Exclusive check in & out at the Executive Lounge
- Exclusive concierge services and 24-hour hotline support



- Complimentary use of membership sports club “The Golden Spa New Otani”
- Free parking in specially reserved areas
- Complimentary use of conference rooms in the Business Center (2 hours)

- Complimentary drinks & light meals in the Executive Lounge
- Exquisite items that form the core of Hotel New Otani Tokyo's dining experience are offered buffet style, six times a day.



Breakfast
7:00am-10:00am

Lunch
Noon-2:00pm

Hors d'Oeuvres
5:30pm-8:00pm

Morning Snack
10:00am-noon

Afternoon Tea
2:30pm-4:30pm

Nightcap and Chocolates
8:00pm-9:30pm



THE MAIN

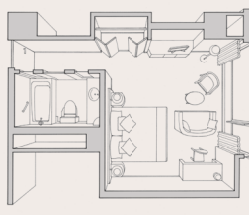
Experience true comfort in first-class hospitality and service founded on a long-established tradition.



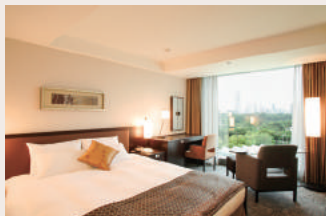
Standard

36m²/387.5ft²

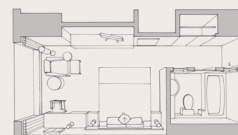
The full-height windows offer stunning views that include the State Guest House and our Japanese garden.



Quality Double



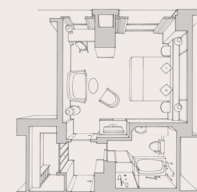
26m²/279.8ft²



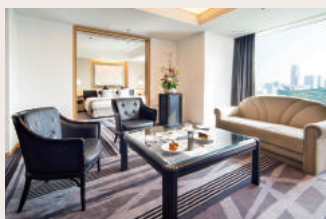
Deluxe



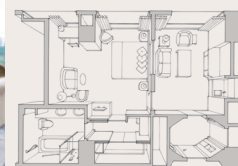
45m²/484.3ft²~



Suites



71m²/764.2ft²~

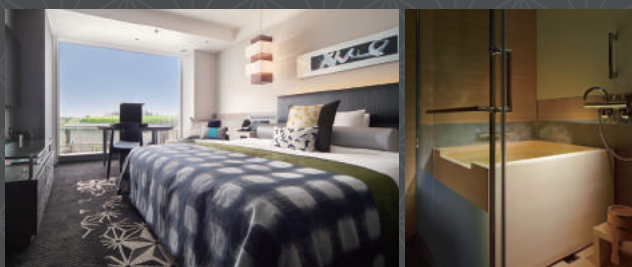


Shin-Edo Rooms

Offering a totally new approach to Japanese hospitality

The newly decorated "Shin-Edo" rooms showcase Hotel New Otani Tokyo's innovative approach to Japanese hospitality. A cypress-wood bath, complimentary sake, in-room tablet computer, along with the Japanesque theme, offer a stay enriched with tradition, comfort, and technology.

Single (26m²/279.8ft²)



Standard (36m²/387.5ft²), Deluxe (45m²/484.3ft²)



(To be released in autumn 2018)

Guest Rooms

*Twin-bed rooms are also available in each category.



NEW OTANI GARDEN TOWER

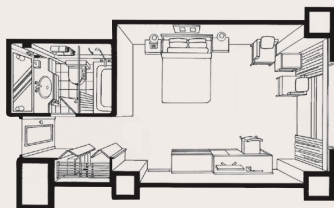
Modern comfort and a view from the high-rise offer a moment of relaxation.



Standard

27.3m²/293.8ft²

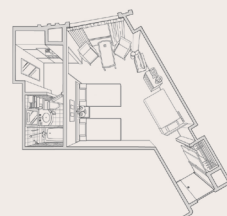
Equipped with oversized beds and boast breathtaking cityscape views.



Standard <Triple>



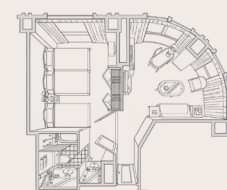
39.7m²/427.3ft²



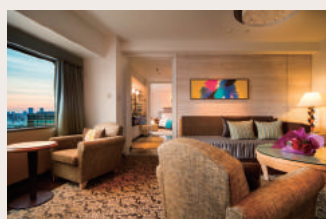
Deluxe



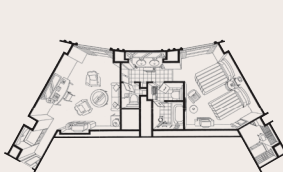
50.2m²/540.3ft²~



Suites



74.7m²/804ft²~



Start your day with the breakfast of your choice

Breakfast is offered at four restaurants and also through room service



SATSUKI

Buffet

7am-10am Lobby fl, THE MAIN bldg

*A la carte items offered from 7am to 11am



Room Service

6am-11am



TOWER BUFFET

Buffet

6am-10am 40th fl, GARDEN TOWER



Kioi NADAMAN

Japanese Set Meal

7am-10am Lobby fl, GARDEN TOWER



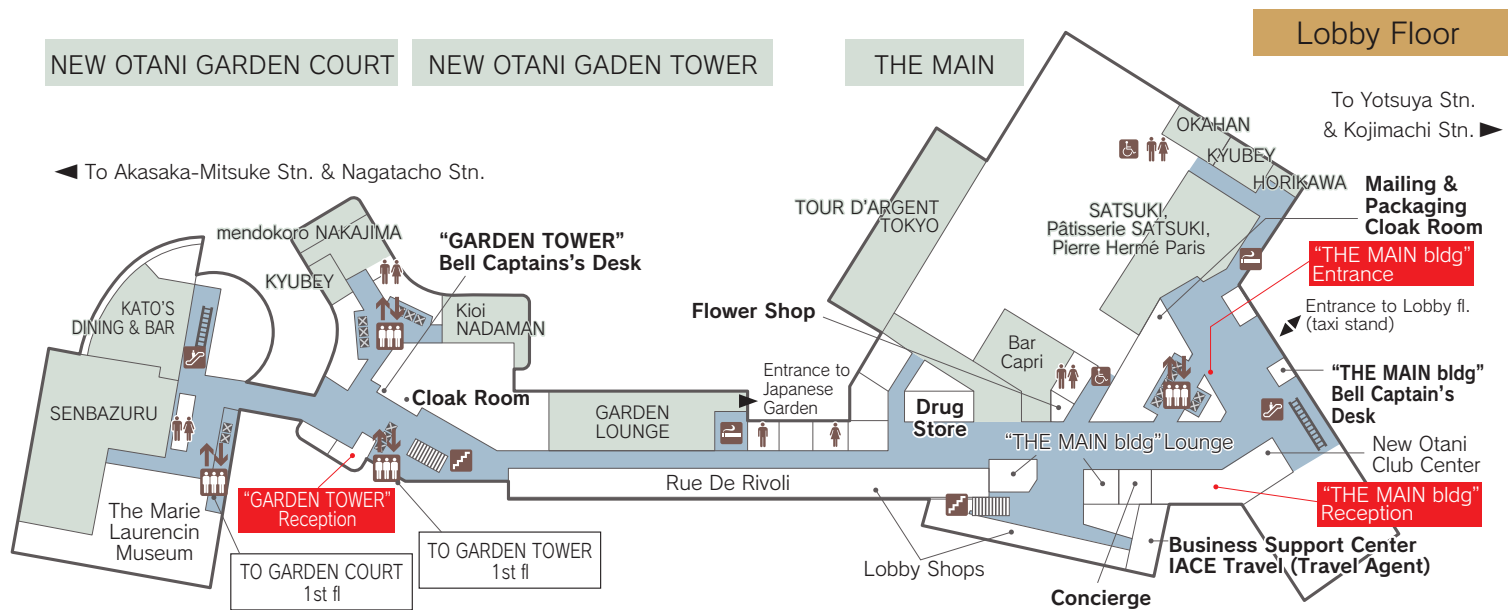
Garden Lounge

Buffet

7am-10am Lobby fl, GARDEN TOWER

Guest Services

A multitude of convenient services and facilities enrich your stay



THE GOLDEN SPA NEW OTANI

(3rd fl, GARDEN TOWER)

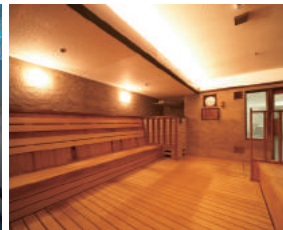
Staying guests are welcome to the membership sports club THE GOLDEN SPA NEW OTANI for a visitors' fee.
(Free of charge for guests at EXECUTIVE HOUSE ZEN)

Pool & gym: weekdays 7:00am-9:45pm
weekends & holidays 10:00am-8:45pm

Sauna: weekdays 7:00am-10:00pm
weekends & holidays 10:00am-9:00pm



Indoor Pool



Dry Sauna



Training Room

FORTUNA

(3rd fl, GARDEN TOWER)

Offers a wide range of treatments that combine Oriental and Western approaches, such as acupuncture, chiropractic, aromatherapy, and esthetic therapy.

10:00am – 8:00pm

*Reception hours may vary depending on the types of treatments booked.



Treatment Room



Example of Therapy



Refreshments

Workout Room

(3rd fl, THE MAIN bldg & 21st fl, GARDEN TOWER)

Various exercise equipment are available to staying guests free of charge.

THE MAIN bldg: 5:00am-10:00pm

GARDEN TOWER: 6:00am-9:00pm



Workout Room (THE MAIN bldg)



Valet Service

Business Center (3rd fl, THE MAIN bldg)

Conference rooms (separate fee required) and workstations with PCs (free of charge) are available to staying guests only.

Conference rooms: weekdays 9:00am-8:00pm / weekends and holidays 9:30am-5:00pm

Workstations: weekdays 8:00am-9:00pm / weekends and holidays 9:00am-5:00pm

Valet Service

Laundry, dry cleaning, and pressing services are available.
Finished items will be delivered to your room.

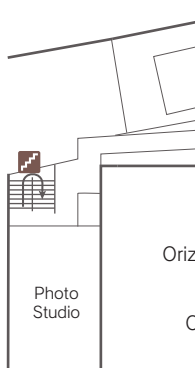
Laundry/Dry Cleaning (Normal Service)
Pressing (Normal Service)
Overnight Service (50% surcharge required)

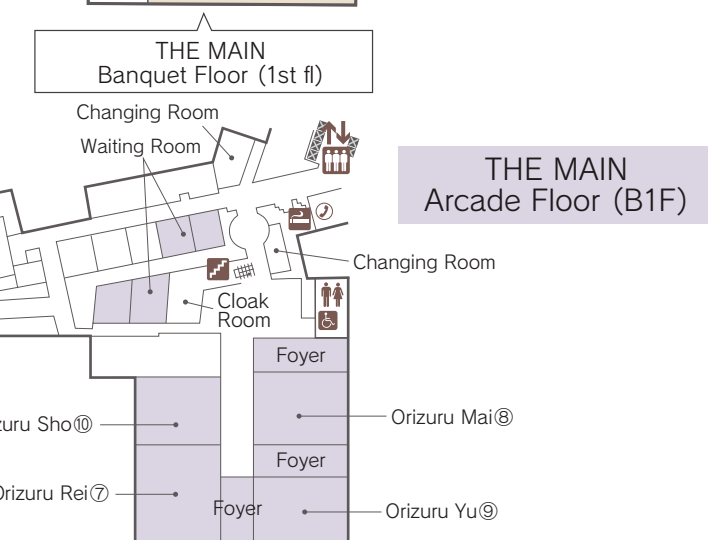
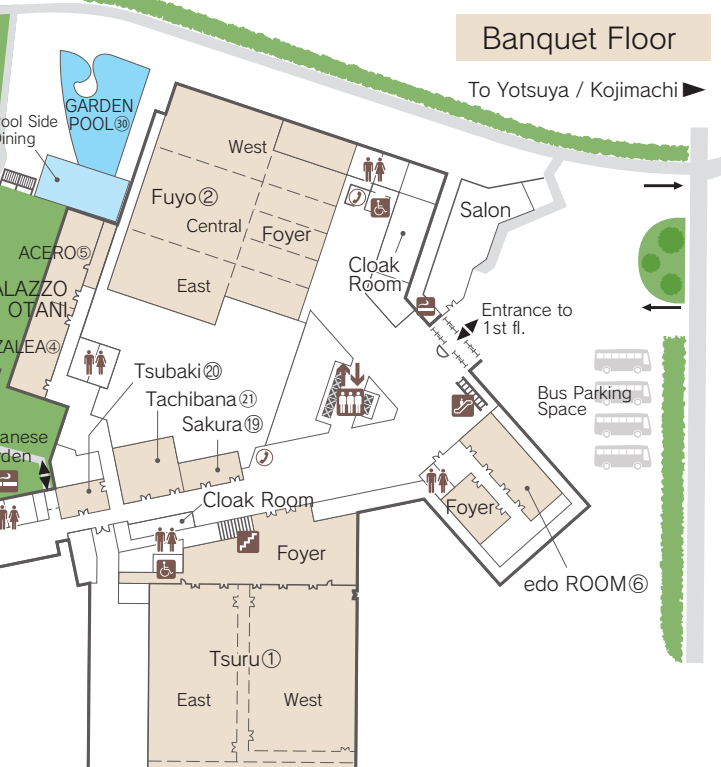
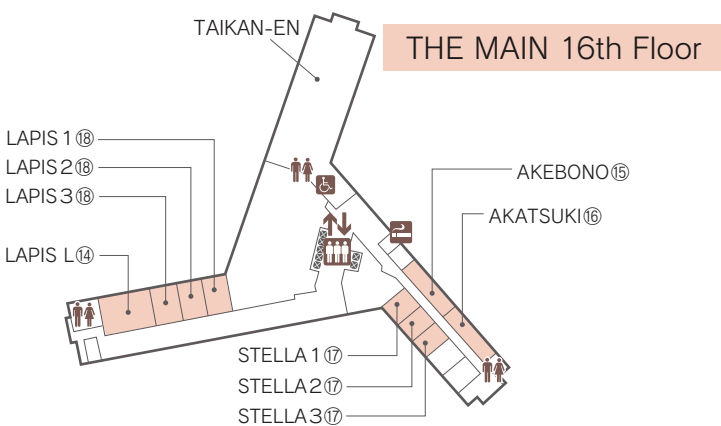
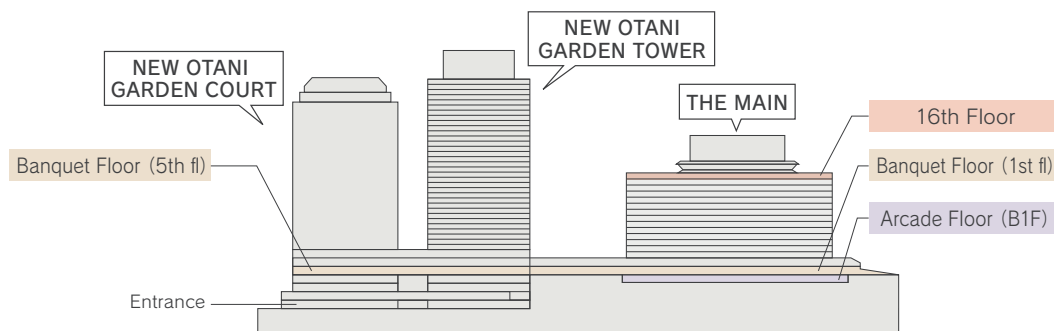
Received by
8:30am-10:00am
8:30am-noon
5:00pm-10:00pm

Delivery by
6:00pm
6:00pm
8:00am next morning

Meetings & Banquets

A total of 33 banquet venues of various sizes cater to various events, from international conventions to small gatherings





Large-size Banquet Rooms

Name	Location	Space (m ²)	Ceiling Height (m)	Capacity				
				Formal	Buffet	School	Theater	Hollow Square
Tsuru ①	Total	1,992	—	1,150	2,500	1,200	2,184	—
	East	850	5.7	400	800	504	1,023	—
	West	965	5.7	540	1,100	560	1,200	—
	(Foyer)	460	3.2	—	—	—	—	—
Fuyo ②	Total	1,124	—	630	1,500	784	1,404	—
	East	317	7.6	160	200	192	340	90
	Central	490	7.6	250	350	336	544	112
	West	317	7.6	160	200	192	340	90
	(Foyer)	624	2.9	—	—	—	—	—
HŌ ③	Total	722	—	420	500	540	1,014	—
	East/Central	462	4.2	260	350	310	585	112
	West	234	4.2	110	140	126	240	68
	(Foyer)	151	2.9	—	—	—	—	—

Medium-size Banquet Rooms

Name	Location	Space (m ²)	Ceiling Height (m)	Capacity				
				Formal	Buffet	School	Theater	Hollow Square
PALAZZO OTANI	Total	340	3.2	144	180	192	320	132
	AZALEA ④	170	3.2	64	80	88	170	66
	ACERO ⑤	170	3.2	64	80	88	170	66
	edo ROOM ⑥	232	3.4	100	150	150	280	82
Orizuru	Rei ⑦	354	3.0	180	230	200	360	88
	Mai ⑧	281	3.0	140	150	160	300	72
	Yu ⑨	278	3.0	110	140	152	270	68
	Sho ⑩	240	3.0	110	130	128	240	64
Suihō ⑪	GARDEN TOWER Banquet Floor	267	3.8	130	150	200	286	80
Sirius ⑫	GARDEN COURT Banquet Floor	229	3.0	100	140	124	215	68
Aries ⑬	GARDEN COURT Banquet Floor	180	3.0	70	120	102	175	56
LAPIS L ⑭	THE MAIN bldg 16th Floor	147	2.2	60	80	64	100	—

Small-size Banquet Rooms

Name	Location	Space (m ²)	Ceiling Height (m)	Capacity				
				Formal	Buffet	School	Theater	Hollow Square
AKEBONO ⑮/AKATSUKI ⑯	THE MAIN bldg 16th Floor	63	2.2	10	—	—	—	—
STELLA ⑰		46	2.2	18	—	16	—	18
LAPIS ⑱		73	2.2	30	40	32	60	28
Sakura ⑲	THE MAIN bldg Banquet Floor	89	3.0	—	—	—	—	—
Tsubaki ⑳		65	3.0	—	—	—	—	—
Tachibana ㉑		164	3.0	—	—	—	—	—
Kiku ㉒	GARDEN TOWER Banquet Floor	68	3.0	16	—	—	—	—
Suisen ㉓		58	3.0	24	40	28	54	22
Asebi ㉔		49	3.0	20	—	—	—	20
Yamabuki ㉕	GARDEN COURT Banquet Floor	85	3.0	30	40	30	60	—
Crescent ㉖		79	3.0	30	40	—	—	28
Board Room ㉗		66	3.0	30	30	—	—	28
Summit East ㉘		40	3.0	10	—	—	—	—
Summit West ㉙		40	3.0	10	—	—	—	—

Garden Pool

Name	Location	Space	Capacity
GARDEN POOL ㉚	Japanese Garden	2,000	50~250

Restaurants & Bars

A total of 38 restaurants and bars offer diverse dining experiences including Japanese, Western, and Chinese cuisines.

*Private rooms require separate charges *Ending times indicate last call for orders

Western Cuisine

Exquisite French Cuisine
TOUR D'ARGENT TOKYO



The one and only branch location of the esteemed Parisian establishment

Lobby fl, THE MAIN bldg
5:30pm-8:30pm, Closed on Mondays
Private room: 1 (max 30 persons)

Western Cuisine

Brasserie, Café & Bakery
AUX BACCHANALES



A stylish brasserie facing the park, offering casual Parisian esprit and home style French cuisine

1st fl, Shin-Kioicho bldg
10:00am-10:00pm (-9:00pm on Sun & hol)
Private room: 1 (buffet max 60 persons)

Teppanyaki/Steak House

Teppanyaki
Garden Restaurant SEISEN-TEI



Succulent beef and fresh seafood prepared right at your table overlooking a koi pond
Within Japanese garden

11:30am-2:00pm & 5:30pm-9:30pm

International Cuisine
TRADER VIC'S TOKYO

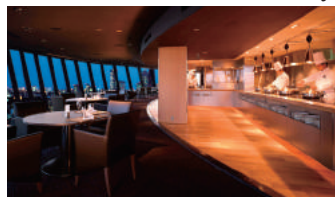


Enjoy dishes from around the world and tropical concoctions

4th fl, GARDEN TOWER
11:30am-2:30pm & 5:30pm-9:30pm
Private rooms: 5 (seated 4-60, standing buffet max 80 persons)

Buffet

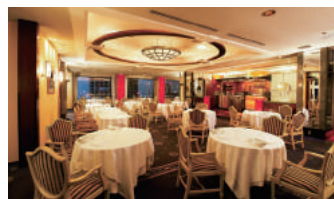
Buffet & Bar
VIEW & DINING THE Sky



Take in the 360-degrees panorama of Tokyo and an extensive buffet of freshly prepared items

17th fl, The MAIN bldg
11:30am-2:30pm & 5:30pm-9:00pm
Private rooms: 2 (4-6 persons)

Western Cuisine
BELLA VISTA



Authentic Italian pastas and charcoal-grilled items with the view from the 40th floor

40th fl, GARDEN TOWER
Noon-2pm (-2:30pm on hol) & 5:30pm-9pm
Private rooms: 2 (6-20 persons)

Buffet Restaurant
TOWER BUFFET



New Otani's all-star buffet and a breathtaking view from the 40th floor

40th fl, GARDEN TOWER
6:00am-10:00am, 11:30am-2:00pm
& 5:30pm-9:00pm

International Cuisine
GUN-SHIP



Set sail on a gourmet voyage of delectable cuisine from around the world in a nautical theme decor

4th fl, GARDEN COURT
11:30am-2:00pm & 5:30pm-9:00pm
Private rooms: 6 (4-80 persons)

Steak House/Teppanyaki
SEKISHIN-TEI

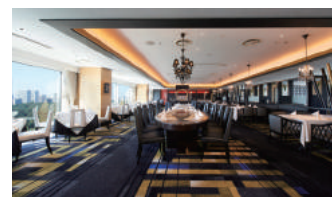


A counter-style restaurant within the Japanese garden offering prime beef and seafood

Within Japanese garden
11:30am-2:00pm (-3:00pm on weekends and holidays) & 5:30pm-9:30pm

Chinese Cuisine

Chinese Cuisine
TAIKAN-EN

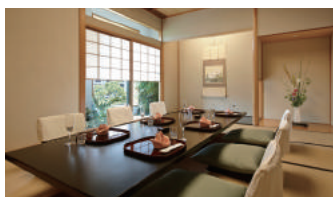


Delight in the genuine taste of Shanghai that has been fascinating gastronomists ever since 1964

16th fl, THE MAIN bldg
11:30am-3:00pm & 3:00pm-9:30pm
Private rooms: 5 (6-36 persons)

Japanese Cuisine

Japanese Cuisine
SENBAZURU



Elaborately-prepared seasonal delicacies and traditional service

Lobby fl, GARDEN COURT
11:30am-2:00pm & 5:00pm-9:00pm
Private rooms: 5 (2-20 persons)

Dining & Bar
KATO'S DINING & BAR



Authentic Japanese cuisine and an extensive selection of sake

Lobby fl, GARDEN COURT
11:30am-10:00pm
Private rooms: 3 (2-24 persons)

Noodle Shop
mendokoro NAKAJIMA



Traditional yet innovative soba and udon dishes and delicacies sought out from all over Japan

Lobby fl, GARDEN TOWER
11:30am-2:00pm & 5:00pm-9:00pm

Japanese Cuisine
NADAMAN MAIN BRANCH SAZANKA-SO



Refined "kaiseki" cuisine offered in a quaint Japanese building

Within Japanese garden
11:30am-3:00pm & 5:00pm-10:00pm
Private rooms: 5 (4-20 persons)

Japanese Cuisine

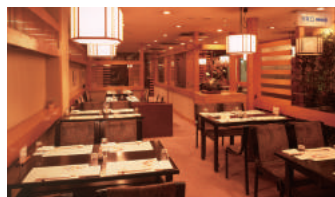
Tempura
Kioi NADAMAN



Traditional Japanese cuisine, original creations, and a generous view of the Japanese Garden

Lobby fl, GARDEN TOWER
7-10am, 11:30am-2:30pm & 5-9pm
Private rooms: 6 (2-40 persons)

Japanese Cuisine
HORIKAWA



Seasonal delicacies prepared as dynamic yet subtle dishes

Arcade fl, THE MAIN bldg
11:30am-2:30pm & 5:00pm-10:00pm
Private rooms: 3 (2-22 persons)

Tempura
TEMPURA HORIKAWA



The best of traditional tempura made with fresh fish and vegetables and specially selected oil

Lobby fl, THE MAIN bldg
11:30am-2:30pm & 5:00pm-9:30pm
Private room: 1 (6-10 persons)

Japanese Cuisine
RANSEN



Watch the culinary craftsmanship of chefs at work, using select foods from around the country

Arcade fl, THE MAIN bldg
11:30am-2pm & 5pm-9pm (-8pm on Sun & hol)
Private rooms: 3 (4-12 persons, course order required)



Breakfast



Lunch



Dinner

Japanese Cuisine

Sukiyaki & Shabu Shabu

OKAHAN



Traditional sukiyaki and shabu shabu using quality beef and vegetables

Lobby fl, THE MAIN bldg
11:30am-2:00pm & 5:00pm-9:00pm
Private rooms: 5 (1-35 persons)

Sushi

KYUBEY



Discover the art of sushi at this acclaimed restaurant known as one of the best in Japan

Lobby fl, THE MAIN bldg / Lobby fl, GARDEN TOWER
11:30am-1:50pm & 5:00pm-9:20pm
Private room: 1 (4-6 persons, Garden Tower branch)

Sushi

TSUKIJI SUZUTOMI



This restaurant from Tsukiji offers carefully prepared sushi in an elegant atmosphere

4th fl, GARDEN COURT
11:30am-2:30pm & 5:00pm-9:00pm
Private room: 1 (4-18 persons)

Tonkatsu

FUMIZEN



Savor the flavors and textures of expertly-made "tonkatsu", a popular pork dish in Japan

Arcade fl, THE MAIN bldg
11:30am-2:00pm & 5:00pm-9:00pm

Japanese Cuisine

Noodles & Eel

NIIZU



Grilled "unagi" eels with a rich flavor and soft texture, and fresh-made "soba" noodles

Arcade fl, THE MAIN bldg
11:00am-3:00pm & 5:00pm-9:00pm

Yakitori

ISEHIRO



A branch of a time-honored "yakitori" restaurant

Arcade fl, THE MAIN bldg
11:00am-1:30pm & 5:00pm-9:00pm
Private room: 1 (5-6 persons)

Cafe & Lounges

Coffee Shop

SATSUKI



A selection of carefully prepared items offered from breakfast to dinner or a late evening snack

Lobby fl, THE MAIN bldg
7:00am-midnight

Tea & Cocktail

GARDEN LOUNGE



A spacious and open lounge with a breathtaking view of the Japanese garden

Lobby fl, GARDEN TOWER
7:00am-10:00pm

Tea & Cocktail

Pizza and Cafe

TOM CAT

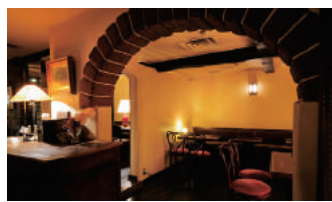


Offers pastas, pizzas, curries, and appetizers in a casual and modern atmosphere

Arcade fl, THE MAIN bldg
11:30am-9:00pm (-4:30pm on Sun & hol)
Private rooms: 2 (8-40 persons)

Wine Dining & Cafe

PESHAWORL



A quaint and cozy coffee shop furnished with antique pieces, serving nel drip French roast coffee

Arcade fl, THE MAIN bldg
9:30am-6:30pm (-5:30pm on wknd & hol)

Cafe & Sweets

CaFé LA MILLE



Sit back in the warm décor with a cup of expertly-brewed aromatic coffee and delicate cakes

2nd fl, GARDEN TOWER
10:00am-7:30pm (11:00am- on Sun & hol)

Cafe

MILK HALL



A food-court style restaurant offering ramen, pastas, curries, and set meals at affordable prices

4th fl, GARDEN COURT
11:30am-3:45pm, Closed on wknd and hol

Tea & Cocktail

Cafe

TULLY'S COFFEE



A selection of gourmet coffees from around the world, pastries, sandwiches, and sweets

2nd fl, GARDEN COURT
7:30am-8pm (9am-6pm on wknd & hol)

Bar

Main Bar

Bar Capri



Expressionist paintings by Paul Aizpiri adorn the walls and live piano music entertains the patrons

Lobby fl, THE MAIN bldg
1:00pm-0:45am
Private rooms: 2 (10-35 persons)

Cafe & Bar

TOWER CAFÉ



Indulge in an evening in style with a spectacular view from the top floor of the Garden Tower

40th fl, GARDEN TOWER
5:00pm-10:45pm

Bar

sky BAR



Take in the glittering nightscape of Tokyo with an aperitif or after-dinner drink

17th fl, THE MAIN bldg
5:00pm-10:45pm

Bar

TRADER VIC'S TOKYO BOATHOUSE BAR



Choose from more than 80 concoctions of tropical drinks including the original Mai Tai

4th fl, GARDEN TOWER
11:30am-11:30pm (3:30pm- on Sundays, holidays & last Saturday of the month)

Dining & Bar

KATO'S DINING & BAR



A stylish bar with Japonesque elements, offering more than 300 alcoholic beverages

Lobby fl, GARDEN COURT
5:00pm-9:45pm

Bar

RANSEN HANARE



Indulge in sommelier-selected wines and Japanese dishes in the tasteful wood and stone décor

Arcade fl, THE MAIN bldg
11:30am-2:00pm & 5:00pm-2:00am
(-11:00pm on holidays), Closed on Sundays

Pastry

Bread & Cake

Patisserie SATSUKI



Cakes, breads, and items from PIERRE HERMÉ PARIS for takeaway

Lobby fl, THE MAIN bldg
11:00am-9:00pm

Seasonal Attractions at Hotel New Otani Tokyo

Our 400-year-old Japanese garden is rich with flowers and greenery that bloom and change color from season to season.

Events

March	April	May	June	July	August	September	October	November	December	January	February
	Garden Pool			Garden Pool				Exterior Light-up			
	Golden Week Holiday Events			Night Pool				Christmas Tree Decoration			
Sakura Promotion			●Sanno Matsuri (Hie Shrine) ※One of Japan's three major festivals held in Tokyo					Christmas Promotion		New Year's Events	

Japanese garden

March	April	May	June	July	August	September	October	November	December	January	February
Cherry Blossoms	Rhododendron		Hydrangea	Crepe Myrtle		Sasanqua Camellia		Camellia Hiemalis			
Camellia	Satsuki Azalea & Sweet Flag					Japanese Clover & Silver Grass	Autumn Foliage				
	Azalea										

Two trees in the garden, a Japanese Nutmeg and Yew Plum Pine, are accessed to be over 200 years old, and have been designated by the Chiyoda ward as Natural Treasures.

Nighttime illumination supervised by globally-renowned lighting artist Motoko Ishii can be enjoyed after dark in the Japanese garden around the year (from 6:15pm-midnight, depending on the season).

Spring



Summer



Autumn



Winter



During the cherry blossom season, the lobby and restaurants are also decorated with fresh cherry branches. Nearly 20 breeds of cherry bloom at slightly different timings in the Japanese garden, such as the weeping cherry (late March to late April), Yoshino cherry (late March to early April), and yaezakura (late April to early May), so viewers can appreciate their beauty for a longer period.

The 2,000m² outdoor Garden Pool offers a tropical resort ambience by day and a stylish night scene after dusk with DJ performances on weekends. On days when the pool is not open to the public (during April-September), the area can be used as a venue for client parties, weddings, press events, etc.

The 10-acre garden starts to display signs of autumn from mid-November, with the leaves turning bright red, orange, and yellow, and the feathery plumes of silver grass swaying in the wind. The restaurants within the hotel offer rich blessings of the harvest season such as chestnuts, matsutake mushrooms, etc as delightful dishes and sweets.

From November to February, the perimeter of the hotel is adorned with over 130 thousand fairy lights that shine and glitter through the clear winter air. During the holiday period, more than 30 decorated trees of various sizes and themes boost the festive mood throughout the grounds and in the lobby and restaurants.

The New Otani

New Otani Hotels

Hotel New Otani Tokyo, Hotel New Otani Makuhari, Hotel New Otani Osaka, New Otani Inn Sapporo, Hotel New Otani Nagaoka, NASPA New Otani (Echigo Yuzawa), Yuzawa New Otani, New Otani Inn Tokyo (Osaki), New Otani Inn Yokohama Premium, Hotel New Otani Takaoka, Hotel New Otani Tottori, Hotel New Otani Hakata, Hotel New Otani Saga, New Otani Kaimana Beach Hotel (Honolulu), Hotel New Otani Chang Fu Gong (Beijing)

Associate Hotels

The Italia-Ken (Niigata), Kanazawa New Grand Hotel, Hotel New Omi (Omi-hachiman), The New Hotel Kumamoto

The New Otani

NEW OTANI HOTELS

www.newotanihotels.com

4-1 KIOI-CHO, CHIYODA-KU, TOKYO 102-8578, JAPAN Tel:(03)3265-1111 Fax:(03)3221-2619

201809TE8000