

OTACITY

OTA CITY

Illustration Map



Ota City is...

a GATEWAY to Japan!
a MANUFACTURING town!
a town of SENTO!
(We have 33 public baths!)



IKEGAMI HONMONJI TEMPLE

The heart of Ota and a center of Nichiren Buddhism

10min from Ikegami sta.
12min from Nishimagome sta.

Temples & Shrines



SAKURAKAN

Enjoy the open-air bath (Closed in winter)
6min from Ikegami sta.



HASUNUMA ONSEN

The most elegant bath in town
2min from Hasunuma sta.

Affordable Prices!

- Adult-550yen
- Child-200yen
- Toodler-100yen



YU-CITY KAMATA

They have karaoke and food!
5min from Kamata sta.

Bath Houses



TAMAGAWA SENGEN SHRINE

A place to pray for safe childbirth and future parents
2min from Tamagawa sta.



ANAMORI-INARI SHRINE

Like the one in Kyoto, but with way fewer people
3min from Anamori-inari sta.



NITTA SHRINE

If you want to see a massive arrow, this is the place
3min from Musashi-nitta sta.



IKEGAMI PLUM GARDEN

Enjoy the plum bloom
20min from Ikegami sta.
10min from Nishimagome sta.



HORAI PARK

A piece of peace
6min from Den-en-chōfu sta.



SENZOKU-IKE PARK

There are swan boats!
1min from Senzoku-ike sta.

Greens



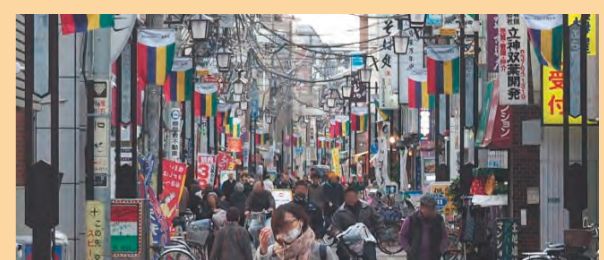
SHOWA LIVING HISTORY MUSEUM

Get a taste of nostalgic Showa era
8min from Kugahara sta. or Shimomaruko sta.
Adult-1000yen/Child-500yen
Closed on: Monday-Thursday



YAMAGUCHI TAIKEN MUSEUM

Make an original souvenir while drinking matcha!
18min from Kamata sta.
Adult-1400yen/Child-500yen
Closed on: Tuesdays



SHOPPING ST.

Local culture and people at a "shotengai" street
Near the station

Activities

Don't know how to get there?
Read the QR code to find more information!

