

## Area around railway station

鉄道駅界限

### Around Komaba-todaimae Station

駒場東大前駅界隈

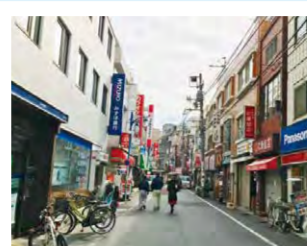
Many educational institutions are gathered here, including the University of Tokyo in front of the station. As there is also a large park, this is an area which, while bustling, also has a relaxed atmosphere.



### Around Ikejiri-ohashi Station

池尻大橋駅界隈

Just off the large street in front of the station you will find a tranquil residential area with small stores lining the streets. Nearby there is an aerial garden and an area of the Meguro River which is lively when the cherry blossoms are in bloom.



### Around Naka-meguro Station

中目黒駅界隈

With highly convenient transportation, there are many eateries, general shop, and clothes store lining the area under the Tokyo Toyo Line tracks and along the Meguro River. Local events are held throughout the year, such as when the cherry blossoms are in bloom, making this an always lively area.



### Around Meguro Station

目黒駅界隈

There are many office buildings around the station, and it is a lively area with many eateries. Meguro Gajoen is around three minutes on foot descending Gyoin-zaka going west from the station, and descending from Gonnosuke-zaka, the Meguro River, with its famous lines of cherry blossom trees, is around 5 minutes on foot.



### Around Yutenji Station

祐天寺駅界隈

There are many shopping streets and various eateries around the station. It is a peaceful area and comparatively free of traffic.



### Around Gakugei-daigaku Station

学芸大学駅界隈

This area, including under the tracks of the Tokyo Toyo Line, has lively shopping arcades. The shopping arcades have elaborate events taking place throughout the year.



### Around Toritsu-daigaku Station

都立大学駅界隈

This is an area with a relaxed atmosphere where tranquil residential streets are laid out. There are lots of eateries, cafes, and sweets shops under the tracks of the Tokyo Toyo Line and around the station area.



### Around Jiyugaoka Station

自由が丘駅界隈

One of the foremost shopping areas in the city, with a concentration of department stores and cafes around the station. The "Jiyugaoka Sweets Forest," which is a food court for sweets, is popular.



### Around Midorigaoka Station

緑が丘駅界隈

This is an area with a calm atmosphere and tranquil residential areas laid out. Normikawa & Kuhonbutsugawa Green Way in the vicinities of the station, where you can enjoy small shops and walking, is also found here.



### Around Nishi-koyama Station

西小山駅界隈

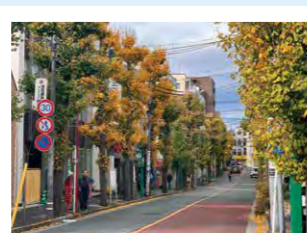
There are bustling shopping arcades around the station. Nearby, Tachiaigawa Green Way leads on from the Himonya Hachimangu Shrine precinct.



### Around Senzoku Station

洗足駅界隈

This is a residential area with a touch of class which also has an extensive road network. Each year, Ginkgo-lined shopping streets in front of the station are colored in brilliant yellows from the latter part of November to the start of December.



## Sakura Namiki of Meguro River

Sakura Namiki means the line of cherry blossoms.

目黒川の桜並木

Around 800 cherry blossom trees are planted on either side of the Meguro River. Most of the trees are Someiyoshino (prunus yedoensis), with Satozakura and Shidarezakura (prunus pendula) trees also found. Many people gather here during the cherry blossom season to admire the blossoms.

## Scenes from Sakura season

桜開花時の風景

Upstream section Approx. 1.7 km long (between Funairiba and Ohashi 1-chome)

Near Ohashi Bridge Nambu Bridge Upstream section Funairiba Park Bridge Upstream section



Downstream section Approx. 2.3 km long (between Funairiba and Shimo-Meguro 1-chome)

Funairiba Park Nakame Park Bridge Upstream section Nakame park Bridge Downstream section



## Event information

イベント情報



Nakameguro (Meguro River) Sakura Illuminations Nakameguro Sakura Festival Meguro East Area Sakura Festival

中目黒(目黒川)ライトアップ 中目黒桜まつり 目黒イーストエリア桜まつり

Venue Saikachi Bridge - Nambu Bridge section Venue Goryoten Asobiba (confluence playgrou) Venue Dendo Square Park

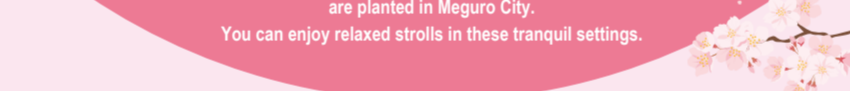
Event period late March to early April Event period Around early April Event period Around early April

## Sakura Namiki of Green Way (pedestrian path)

緑道の桜並木

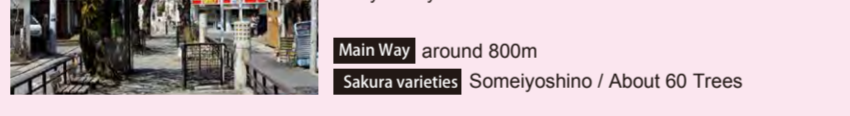
There are three Green Ways on which cherry blossom trees are planted in Meguro City.

You can enjoy relaxed strolls in these tranquil settings.



### Tachiaigawa Green Way 立会川緑道

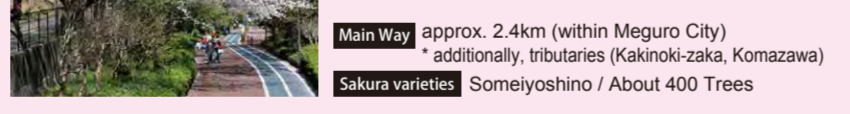
This is a Green Way which runs from Himonya Hachimangu Shrine towards Nishikoyama Station. The path around Himonya Hachimangu Shrine is wide, with many cherry blossom trees.



Main Way around 800m Sakura varieties Someiyoshino / About 60 Trees

### Nomikawa Green Way 呑川緑道

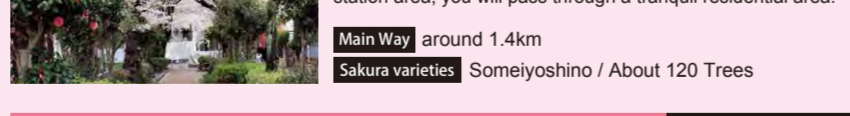
A Green Way with a tunnel of cherry blossoms running through the peaceful residential area. In the evenings when the cherry blossoms are in bloom, the area in front of Toritsu-daigaku Station is lit up.



Main Way approx. 2.4km (within Meguro City) additionally, tributaries (Kakinoki-zaka, Komazawa) Sakura varieties Someiyoshino / About 400 Trees

### Kuhonbutsugawa Green Way 九品仏川緑道

A Green Way which stretches from east to west around Jiyugaoka Station. There are rows of benches in front of the station and the area bustles with many people. Leaving the station area, you will pass through a tranquil residential area.



Main Way around 1.4km Sakura varieties Someiyoshino / About 120 Trees

## Event information

イベント情報



Himonya Hachimangu Shrine BOMBORI Festival SAKURA FESTA in front of Toritsu-daigaku Station Jiyugaoka Sakura Festival

碑文谷八幡宮ぼんぼり 都立大学駅前桜フェスタ 自由が丘さくら祭り

Venue Himonya Hachimangu Shrine approach Venue Nomikawa Green Way Venue Kuhonbutsugawa Green Way

Event period late March to early April Event period late March to early April Event period late March to early April

## Recommended 4 courses from Shibuya

### A The Edo Japan Culture Expert Course around Shimo-Meguro

下目黒周辺で江戸日本文化堪能コース

This area around Shimo-Meguro was popular with townsfolk from around the Edo period. Today, there remain many spots to slip back into bygone times, with Buddhist temples and eateries specializing in eel or soba noodles, as well as Japanese confectionary shops, making it the ideal course to get a taste of Edo Japan culture.

3-hour route from Shibuya station

Meguro Station 目黒駅

1 Hotel Gajoen Tokyo ホテル雅緻園東京

2 Ootori Jinja Shrine 大鳥神社

3 Banryuji Temple 蟻電寺

4 Gohyaku Rakanji Temple 五百羅漢寺

5 Ryusenji Temple (Meguro Fudoso) 瀧泉寺(目黒不動尊)

6 Takoyakushi Jojuin Temple たこ業師 成就院

5 minutes on foot

4 minutes on foot

9 minutes on foot

5 minutes on foot

5 minutes on foot

1 minutes on foot

2 minutes on foot

7 minutes on foot

### B Seven Gods of Good Fortune Course (Yamate Shichifukujin) 山手七福神めぐりコース

The Seven Gods of Good Fortune are believed in Japan to bring good luck. Visiting the Seven Gods of Good Fortune was one of the diversions of the townspeople in the latter part of the Edo period (1900s), which involved making the rounds of all the gods of luck enshrined in their respective areas. A God of Good Fortune is enshrined in each of the shrines and temples, and we recommend that you visit each one.

1 Ryusenji Temple (Meguro Fudoso) 瀧泉寺(目黒不動尊)

2 Banryuji Temple 蟻電寺

3 Daienji Temple 大圓寺

4 Myoenji Temple 明圓寺

5 Zuisyoji Temple 瑞聖寺

6 Kakurinjji Temple かくりんじ

7 Ebisu 恵比寿

8 Daienji Temple 大圓寺

9 Banryuji Temple 蟻電寺

10 Ryusenji Temple 瀧泉寺

11 Ebisu 恵比寿

12 Kakurinjji Temple かくりんじ

13 Zuisyoji Temple 瑞聖寺

14 Myoenji Temple 明圓寺

15 Banryuji Temple 蟻電寺

16 Daienji Temple 大圓寺

17 Ryusenji Temple 瀧泉寺

18 Ebisu 恵比寿

19 Kakurinjji Temple かくりんじ

20 Zuisyoji Temple 瑞聖寺

21 Myoenji Temple 明圓寺

22 Banryuji Temple 蟻電寺

23 Daienji Temple 大圓寺

24 Ryusenji Temple 瀧泉寺

25 Ebisu 恵比寿

26 Kakurinjji Temple かくりんじ

27 Zuisyoji Temple 瑞聖寺

28 Myoenji Temple 明圓寺

29 Banryuji Temple 蟻電寺

30 Daienji Temple 大圓寺

31 Ryusenji Temple 瀧泉寺

32 Ebisu 恵比寿

33 Kakurinjji Temple かくりんじ

34 Zuisyoji Temple 瑞聖寺

35 Myoenji Temple 明圓寺

36 Banryuji Temple 蟻電寺

37 Daienji Temple 大圓寺

38 Ryusenji Temple 瀧泉寺

39 Ebisu 恵比寿

40 Kakurinjji Temple かくりんじ

41 Zuisyoji Temple 瑞聖寺

42 Myoenji Temple 明圓寺

43 Banryuji Temple 蟻電寺

44 Daienji Temple 大圓寺

45 Ryusenji Temple 瀧泉寺

46 Ebisu 恵比寿

47 Kakurinjji Temple かくりんじ

48 Zuisyoji Temple 瑞聖寺

49 Myoenji Temple 明圓寺

50 Banryuji Temple 蟻電寺

51 Daienji Temple 大圓寺

52 Ryusenji Temple 瀧泉寺

53 Ebisu 恵比寿

54 Kakurinjji Temple かくりんじ

55 Zuisyoji Temple 瑞聖寺

56 Myoenji Temple 明圓寺

57 Banryuji Temple 蟻電寺

58 Daienji Temple 大圓寺

59 Ryusenji Temple 瀧泉寺

60 Ebisu 恵比寿

61 Kakurinjji Temple かくりんじ

62 Zuisyoji Temple 瑞聖寺

63 Myoenji Temple 明圓寺

64 Banryuji Temple 蟻電寺

65 Daienji Temple 大圓寺

66 Ryusenji Temple 瀧泉寺

67 Ebisu 恵比寿

68 Kakurinjji Temple かくりんじ

69 Zuisyoji Temple 瑞聖寺

70 Myoenji Temple 明圓寺

71 Banryuji Temple 蟻電寺

72 Daienji Temple 大圓寺

73 Ryusenji Temple 瀧泉寺

74 Ebisu 恵比寿

75 Kakurinjji Temple かくりんじ

76 Zuisyoji Temple 瑞聖寺

77 Myoenji Temple 明圓寺

78 Banryuji Temple 蟻電寺

79 Daienji Temple 大圓寺

80 Ryusenji Temple 瀧泉寺

81 Ebisu 恵比寿

82 Kakurinjji Temple かくりんじ

83 Zuisyoji Temple 瑞聖寺

84 Myoenji Temple 明圓寺

85 Banryuji Temple 蟻電寺

86 Daienji Temple 大圓寺

87 Ryusenji Temple 瀧泉寺

88 Ebisu 恵比寿

89 Kakurinjji Temple かくりんじ

90 Zuisyoji Temple 瑞聖寺

91 Myoenji Temple 明圓寺

92 Banryuji Temple 蟻電寺

93 Daienji Temple 大圓寺

94 Ryusenji Temple 瀧泉寺

95 Ebisu 恵比寿

96 Kakurinjji Temple かくりんじ

97 Zuisyoji Temple 瑞聖寺

98 Myoenji Temple 明圓寺

99 Banryuji Temple 蟻電寺

100 Daienji Temple 大圓寺

101 Ryusenji Temple 瀧泉寺

102 Ebisu 恵比寿

103 Kakurinjji Temple かくりんじ

104 Zuisyoji Temple 瑞聖寺

105 Myoenji Temple 明圓寺

106 Banryuji Temple 蟻電寺

107 Daienji Temple 大圓寺

108 Ryusenji Temple 瀧泉寺

109 Ebisu 恵比寿

110 Kakurinjji Temple かくりんじ

111 Zuisyoji Temple 瑞聖寺

112 Myoenji Temple 明圓寺

113 Banryuji Temple 蟻電寺

114 Daienji Temple 大圓寺

115 Ryusenji Temple 瀧泉寺

116 Ebisu 恵比寿

117 Kakurinjji Temple かくりんじ

118 Zuisyoji Temple 瑞聖寺

119 Myoenji Temple 明圓寺

120 Banryuji Temple 蟻電寺

121 Daienji Temple 大圓寺

122 Ryusenji Temple 瀧泉寺

123 Ebisu 恵比寿

124 Kakurinjji Temple かくりんじ

125 Zuisyoji Temple 瑞聖寺

126 Myoenji Temple 明圓寺

127 Banryuji Temple 蟻電寺

128 Daienji Temple 大圓寺

129 Ryusenji Temple 瀧泉寺

130 Ebisu 恵比寿

131 Kakurinjji Temple かくりんじ

132 Zuisyoji Temple 瑞聖寺

133 Myoenji Temple 明圓寺

134 Banryuji Temple 蟻電寺

135 Daienji Temple 大圓寺

136 Ryusenji Temple 瀧泉寺

137 Ebisu 恵比寿

138 Kakurinjji Temple かくりんじ

139 Zuisyoji Temple 瑞聖寺

140 Myoenji Temple 明圓寺

141 Banryuji Temple 蟻電寺

142 Daienji Temple 大圓寺

143 Ryusenji Temple 瀧泉寺

144 Ebisu 恵比寿

145 Kakurinjji Temple かくりんじ

146 Zuisyoji Temple 瑞聖寺

147 Myoenji Temple 明圓寺

148 Banryuji Temple 蟻電寺

149 Daienji Temple 大圓寺

150 Ryusenji Temple 瀧泉寺

151 Ebisu 恵比寿

152 Kakurinjji Temple かくりんじ

153 Zuisyoji Temple 瑞聖寺

154 Myoenji Temple 明圓寺

155 Banryuji Temple 蟻電寺

156 Daienji Temple 大圓寺

157 Ryusenji Temple 瀧泉寺

158 Ebisu 恵比寿

159 Kakurinjji Temple かくりんじ

160 Zuisyoji Temple 瑞聖寺

161 Myoenji Temple 明圓寺

162 Banryuji Temple 蟻電寺

163 Daienji Temple 大圓寺

164 Ryusenji Temple 瀧泉寺

165 Ebisu 恵比寿

166 Kakurinjji Temple かくりんじ

167 Zuisyoji Temple 瑞聖寺

168 Myoenji Temple 明圓寺

169 Banryuji Temple 蟻電寺

170 Daienji Temple 大圓寺

171 Ryusenji Temple 瀧泉寺

172 Ebisu 恵比寿

173 Kakurinjji Temple かくりんじ

174 Zuisyoji Temple 瑞聖寺

175 Myoenji Temple 明圓寺

176 Banryuji Temple 蟻電寺

177 Daienji Temple 大圓寺

178 Ryusenji Temple 瀧泉寺

179 Ebisu 恵比寿

180 Kakurinjji Temple かくりんじ

181 Zuisyoji Temple 瑞聖寺

182 Myoenji Temple 明圓寺

183 Banryuji Temple 蟻電寺

184 Daienji Temple 大圓寺

185 Ryusenji Temple 瀧泉寺

186 Ebisu 恵比寿

187 Kakurinjji Temple かくりんじ

188 Zuisyoji Temple 瑞聖寺

189 Myoenji Temple 明圓寺

190 Banryuji Temple 蟻電寺

191 Daienji Temple 大圓寺

192 Ryusenji Temple 瀧泉寺

193 Ebisu 恵比寿

194 Kakurinjji Temple かくりんじ

195 Zuisyoji Temple 瑞聖寺

196 Myoenji Temple 明圓寺

197 Banryuji Temple 蟻電寺

198 Daienji Temple 大圓寺

199 Ryusenji Temple 瀧泉寺

200 Ebisu 恵比寿

201 Kakurinjji Temple かくりんじ

202 Zuisyoji Temple 瑞聖寺

203 Myoenji Temple 明圓寺

204 Banryuji Temple 蟻電寺

205 Daienji Temple 大圓寺

206 Ryusenji Temple 瀧泉寺

207 Ebisu 恵比寿

208 Kakurinjji Temple かくりんじ

209 Zuisyoji Temple 瑞聖寺

210 Myoenji Temple 明圓寺

211 Banryuji Temple 蟻電寺

212 Daienji Temple 大圓寺

213 Ryusenji Temple 瀧泉寺

214 Ebisu 恵比寿

215 Kakurinjji Temple かくりんじ

216 Zuisyoji Temple 瑞聖寺

217 Myoenji Temple 明圓寺

218 Banryuji Temple 蟻電寺

219 Daienji Temple 大圓寺

220 Ryusenji Temple 瀧泉寺

221 Ebisu 恵比寿

222 Kakurinjji Temple かくりんじ

223 Zuisyoji Temple 瑞聖寺

224 Myoenji Temple 明圓寺

225 Banryuji Temple 蟻電寺

226 Daienji Temple 大圓寺

227 Ryusenji Temple 瀧泉寺

228 Ebisu 恵比寿

229 Kakurinjji Temple かくりんじ

230 Zuisyoji Temple 瑞聖寺

231 Myoenji Temple 明圓寺

232 Banryuji Temple 蟻電寺

233 Daienji Temple 大圓寺

234 Ryusenji Temple 瀧泉寺

235 Ebisu 恵比寿

236 Kakurinjji Temple かくりんじ

237 Zuisyoji Temple 瑞聖寺

238 Myoenji Temple 明圓寺

239 Banryuji Temple 蟻電寺

240 Daienji Temple 大圓寺

241 Ryusenji Temple 瀧泉寺

242 Ebisu 恵比寿

243 Kakurinjji Temple かくりんじ

244 Zuisyoji Temple 瑞聖寺

245 Myoenji Temple 明圓寺

246 Banryuji Temple 蟻電寺

247 Daienji Temple 大圓寺

248 Ryusenji Temple 瀧泉寺

249 Ebisu 恵比寿

250 Kakurinjji Temple かくりんじ

251 Zuisyoji Temple 瑞聖寺

252 Myoenji Temple 明圓寺

253 Banryuji Temple 蟻電寺

254 Daienji Temple 大圓寺

255 Ryusenji Temple 瀧泉寺

256 Ebisu 恵比寿

257 Kakurinjji Temple かくりんじ

258 Zuisyoji Temple 瑞聖寺

259 Myoenji Temple 明圓寺

260 Banryuji Temple 蟻電寺

261 Daienji Temple 大圓寺

262 Ryusenji Temple 瀧泉寺

263 Ebisu 恵比寿

264 Kakurinjji Temple かくりんじ

265 Zuisyoji Temple 瑞聖寺

266 Myoenji Temple 明圓寺

267 Banryuji Temple 蟻電寺

268 Daienji Temple 大圓寺

269 Ryusenji Temple 瀧泉寺

270 Ebisu 恵比寿

271 Kakurinjji Temple かくりんじ

272 Zuisyoji Temple 瑞聖寺

273 Myoenji Temple 明圓寺

274 Banryuji Temple 蟻電寺

275 Daienji Temple 大圓寺

276 Ryusenji Temple 瀧泉寺

277 Ebisu 恵比寿

278 Kakurinjji Temple かくりんじ

279 Zuisyoji Temple 瑞聖寺

280 Myoenji Temple 明圓寺

281 Banryuji Temple 蟻電寺

282 Daienji Temple 大圓寺

283 Ryusenji Temple 瀧泉寺

284 Ebisu 恵比寿

285 Kakurinjji Temple かくりんじ

286 Zuisyoji Temple 瑞聖寺

287 Myoenji Temple 明圓寺

288 Banryuji Temple 蟻電寺

289 Daienji Temple 大圓寺

290 Ryusenji Temple 瀧泉寺

291 Ebisu 恵比寿

292 Kakurinjji Temple かくりんじ

293 Zuisyoji Temple 瑞聖寺

294 Myoenji Temple 明圓寺

295 Banryuji Temple 蟻電寺

296 Daienji Temple 大圓寺

297 Ryusenji Temple 瀧泉寺

298 Ebisu 恵比寿

299 Kakurinjji Temple かくりんじ

300 Zuisyoji Temple 瑞聖寺

301 Myoenji Temple 明圓寺

302 Banryuji Temple 蟻電寺

303 Daienji Temple 大圓寺

304 Ryusenji Temple 瀧泉寺

305 Ebisu 恵比寿

306 Kakurinjji Temple かくりんじ

307 Zuisyoji Temple 瑞聖寺

308 Myoenji Temple 明圓寺

309 Banryuji Temple 蟻電寺

310 Daienji Temple 大圓寺

311 Ryusenji Temple 瀧泉寺

312 Ebisu 恵比寿

313 Kakurinjji Temple かくりんじ

314 Zuisyoji Temple 瑞聖寺

315 Myoenji Temple 明圓寺

316 Banryuji Temple 蟻電寺

317 Daienji Temple 大圓寺

318 Ryusenji Temple 瀧泉寺

319 Ebisu 恵比寿

320 Kakurinjji Temple かくりんじ

321 Zuisyoji Temple 瑞聖寺

322 Myoenji Temple 明圓寺

323 Banryuji Temple 蟻電寺

324 Daienji Temple 大圓寺

325 Ryusenji Temple 瀧泉寺

326 Ebisu 恵比寿

327 Kakurinjji Temple かくりんじ

328 Zuisyoji Temple 瑞聖寺

329 Myoenji Temple 明圓寺

330 Banryuji Temple 蟻電寺

331 Daienji Temple 大圓寺

332 Ryusenji Temple 瀧泉寺

333 Ebisu 恵比寿

334 Kakurinjji Temple かくりんじ

335 Zuisyoji Temple 瑞聖寺

336 Myoenji Temple 明圓寺

337 Banryuji Temple 蟻電寺

338 Daienji Temple 大圓寺

339 Ryusenji Temple 瀧泉寺

340 Ebisu 恵比寿

341 Kakurinjji Temple かくりんじ

342 Zuisyoji Temple 瑞聖寺

343 Myoenji Temple 明圓寺

344 Banryuji Temple 蟻電寺

345 Daienji Temple 大圓寺

346 Ryusenji Temple 瀧泉寺

347 Ebisu 恵比寿

348 Kakurinjji Temple かくりんじ

349 Zuisyoji Temple 瑞聖寺

350 Myoenji Temple 明圓寺

351 Banryuji Temple 蟻電寺

352 Daienji Temple 大圓寺

353 Ryusenji Temple 瀧泉寺

354 Ebisu 恵比寿

355 Kakurinjji Temple かくりんじ

356 Zuisyoji Temple 瑞聖寺

357 Myoenji Temple 明圓寺

358 Banryuji Temple 蟻電寺

359 Daienji Temple 大圓寺

360 Ryusenji Temple 瀧泉寺

361 Ebisu 恵比寿

362 Kakurinjji Temple かくりんじ

363 Zuisyoji Temple 瑞聖寺

364 Myoenji Temple 明圓寺

365 Banryuji Temple 蟻電寺

366 Daienji Temple 大圓寺

367 Ryusenji Temple 瀧泉寺

368 Ebisu 恵比寿

369 Kakurinjji Temple かくりんじ

370 Zuisyoji Temple 瑞聖寺

371 Myoenji Temple 明圓寺

372 Banryuji Temple 蟻電寺

373 Daienji Temple 大圓寺

374 Ryusenji Temple 瀧泉寺

375 Ebisu 恵比寿

376 Kakurinjji Temple かくりんじ

377 Zuisyoji Temple 瑞聖寺

378 Myoenji Temple 明圓寺

379 Banryuji Temple 蟻電寺

380 Daienji Temple 大圓寺

381 Ryusenji Temple 瀧泉寺

382 Ebisu 恵比寿

383 Kakurinjji Temple かくりんじ

384 Zuisyoji Temple 瑞聖寺

385 Myoenji Temple 明圓寺

386 Banryuji Temple 蟻電寺

387 Daienji Temple 大圓寺

388 Ryusenji Temple 瀧泉寺

389 Ebisu 恵比寿

390 Kakurinjji Temple かくりんじ

391 Zuisyoji Temple 瑞聖寺

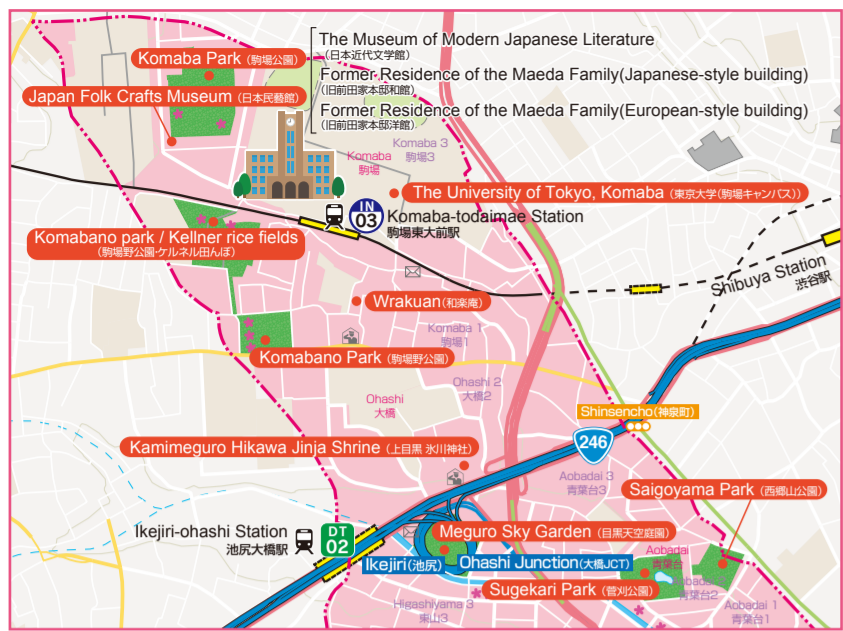
392 Myoenji Temple 明圓寺

393 Banryuji Temple 蟻電寺

394 Daienji Temple 大圓寺

395 Ryusenji Temple

## North Area Komaba / Ohashi Area



**Komaba Park** 駒場公園  
MAP > B-1  
▲ Google Map

A park on the site of the residence of the Marquis Toshihira Maeda, then-ruler of the former Kaga Domain (now Ishikawa Prefecture). In the park you will find Japanese and Western style buildings of the Former Residence of the Maeda Clan and the Museum of Modern Japanese Literature. In 2013, the Japanese and Western style buildings and other features were designated a national important cultural property.

**Former Residence of the Maeda Family (Japanese-style building)** 旧前田家本邸 和館  
MAP > B-1  
▲ Google Map

The building was built to welcome foreign guests in 1930, and was also used for seasonal festivals. From the inner veranda, beautiful views of a private Japanese garden with a small waterfall and pond can be enjoyed.

**Former Residence of the Maeda Family (European-style building)** 旧前田家本邸 洋館  
MAP > B-1  
▲ Google Map

The building as the home for the family's daily life was completed in 1929 and constructed in a British country house-style design, decorated with yellow tuff and scratch tiles on a solid reinforced concrete structure.

**The Museum of Modern Japanese Literature** 日本近代文学館  
MAP > B-1  
▲ Google Map

Opened in 1967. Including the books, magazines and newspapers from the Meiji period onward, it houses a collection of around 1.2 million cultural resources. The resources can be viewed at the reading room and exhibition room.

**The University of Tokyo, Komaba** 東京大学 (駒場キャンパス)  
MAP > C-1  
▲ Google Map

This is one of the campuses of the University of Tokyo, with the clock tower on the grounds of the campus a nationally-registered intangible cultural asset. In recent years, there has been an increase in bistros, coffee shops and bakeries around the campus.

**Japan Folk Crafts Museum** 日本民藝館  
MAP > B-1  
▲ Google Map

A collection of around 17,000 new and old craftworks from Japan and around the world, including pottery, wooden lacquerware and paintings. The collection of folk crafts, including ceramics and fabrics, excels in both quality and quantity. It has a laidback beauty with the storehouse-style building also using Oya tuff stone.

**Kellner rice fields** ケルネル田んぼ  
MAP > B-1  
▲ Google Map

These rice fields were used as experimental fields by Honorary Professor Oskar Kellner, who laid the foundation for agriculture in modern Japan. You can see the rare sight of rice fields within the city at Komabano Park.

**Meguro Sky Garden** 目黒天空庭園  
MAP > C-3  
▲ Google Map

The first ever park to be built over an expressway junction in Japan, with a looped shape and an area of 7,000m<sup>2</sup>. You can overlook the townscape of Meguro from the observatory deck and see Mt. Fuji on fine days. (Opened in 2013)

**Saigoyama Park** 西郷山公園  
MAP > D-3  
▲ Google Map

This is a park associated with Takamori Saigo, one of the leading actors of the Meiji Restoration. You can see Mt. Fuji from the observatory on the fine days in winter and it is a popular spot for night views.

**Sugekari Park** 菅刈公園  
MAP > D-3  
▲ Google Map

This is the main residence of the Saigo family on the site of the residence of Judo Saigo, the younger brother of Takamori Saigo. Once renowned as the most famous excursion garden in the east, it was reopened after partial restoration.

**Kamimeguro Hikawa Jinja Shrine** 上目黒 氷川神社  
MAP > C-2  
▲ Google Map

The local guardian deity, known as a god who can ward off evil. You could once see Mt. Fuji from the peak of the Fuji-Sengen Jinja Shrine trail to the left of the entrance steps and this makes an appearance in Ukiyoe artist Hiroshige's "One Hundred Famous Views of Edo".

## Central Area Yutenji / Gakugei-daigaku Area

**Yutenji Temple** 祐天寺  
MAP > D-5  
▲ Google Map

A temple associated with the Tokugawa Family founded in 1718. Building features such as the Amitabha Hall and Deva Gate from the Edo period remain. The temple bell is a highlight and has marked time since 1738, with the bell still rung today each morning at 6am and noon.

**Himonya Park** 碑文谷公園  
MAP > C-6  
▲ Google Map

This is one of the oldest gardens in Meguro Ward. On the small island in the pond is Itsukushima-jinja shrine with an extremely colorful Benten (Goddess of Arts and Wisdom) enshrined in the inner shrine. This is a park for enjoying boats and encounters with small animals.

## West Area Toritsu-daigaku / Jiyugaoka Area

**Komazawa Olympic Park** 駒沢オリンピック公園  
MAP > A-6/7  
▲ Google Map

This is a park which was constructed as a secondary venue of the Tokyo Olympics, which were the first in Asia and held in 1964. It hosted events including wrestling and volleyball. In the expansive park there are sports facilities, a cycling course, a dog run, and more.

**Yakumohikawa Jinja Shrine** 八雲氷川神社  
MAP > B-7  
▲ Google Map

Here, a God who was believed to prevent chest spasms (disease causing sudden pain of the chest and belly, cramping) was worshipped, with so many pilgrims visiting in the past that there were lodging facilities on the grounds. The Tsuruginomai (sabre dance), a tradition which has been passed down for around 200 years, is performed every September.

**Tokoji Temple** 東光寺  
MAP > B-7  
▲ Google Map

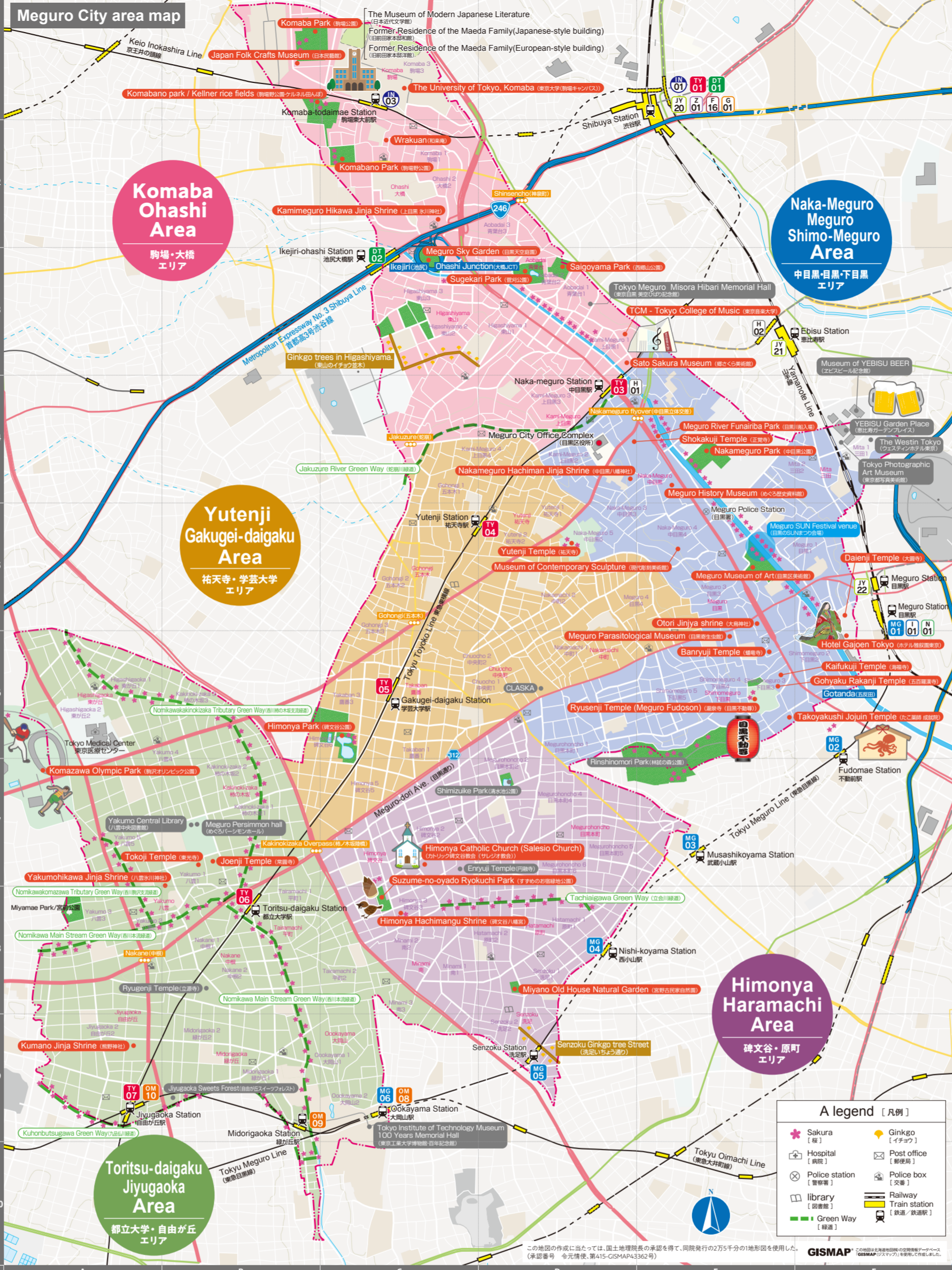
Built to stand alongside Joenji temple, with the grounds dotted with stone statues such as "Jibo-kannon" and the "Roku Jizobosatsu" (six Jizo Bodhisattva). The male Ginkgo tree which stands in front of the main hall is connected with the roots of Ginkgo of Joenji Temple, which accounts for its association with the amusing anecdote asking "Are these married trees?".

**Joenji Temple** 常閑寺  
MAP > B-7  
▲ Google Map

A Nichiren sect temple constructed in 1590 and famous for having the largest Ginkgo tree in Meguro Ward. A child-rearing Jizo exposed to radiation in Hiroshima is treasured and enshrined on the grounds.

**Kumano Jinja Shrine** 熊野神社  
MAP > A-9  
▲ Google Map

Kumano Hongu Taisha Shrine is a shrine with ancient and venerable origins, and is registered as a World Heritage Site. The local guardian deity has long been well loved by residents. The grounds are rich in greenery and it is a splendid spot to walk and have a rest.



## South Area Himonya / Haramachi Area

**Himonya Hachimangu Shrine** 碑文谷八幡宮  
MAP > C-8  
▲ Google Map

A shrine said to have been founded in the 12th to 13th century. Broadleaf trees such as the Japanese zelkova, camphor, and beech which cover the grounds create comfortable shade in summer. During the annual shrine festival in September, portable shrines and floats are paraded, with the entire grounds covered in festival colors.

**Suzume-no-oyado Ryokuchi Park** すずめのお宿緑地公園  
MAP > C-8  
▲ Google Map

This is a park in which a rare bamboo grove remains on the grounds. It came to be referred to as the "Suzume-no-oyado (Sparrow Haven)" some 100 years ago with several thousand sparrows making their home in this bamboo forest. In one corner on the north side there is an old residence which can be visited free of charge.

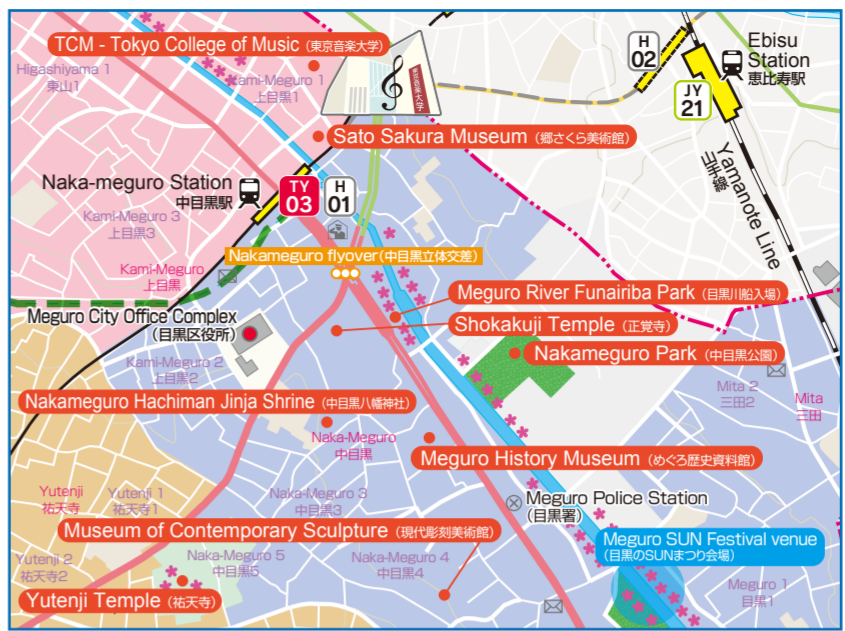
**Himonya Catholic Church (Salesio Church)** カトリック碑文谷教会 (サレジオ教会)  
MAP > C-7  
▲ Google Map

This is a church in the Romanesque style with beautiful stained glass windows. Dedicated to the "Santa Maria of Edo", the wall and ceiling fresco paintings inside are superb features.

**Miyano Old House Natural Garden** 宮野古民家自然園  
MAP > D-8  
▲ Google Map

The traditional house and the trees around the residence remain from more than 200 years ago. In the connected exhibit room, you can view agricultural tools and everyday utensils which were used locally in everyday life from the period through to today.

## East Area Naka-Meguro Area



**Sato Sakura Museum** 彌さくら美術館  
MAP > D-3  
▲ Google Map

With the concept of enjoying cherry blossoms in bloom throughout the year through Ninonga (Japanese-style paintings), there are permanent displays of several dozen major works themed around cherry blossoms.

**TCM - Tokyo College of Music** 東京音楽大学  
MAP > D-3  
▲ Google Map

The Nakameguro-Daikanyama campus of the oldest private music college in Japan opened in April 2019. The chic cafe-restaurant in the College is open to the public.

**Meguro River Funairiba Park** 目黒川船入場  
MAP > E-4  
▲ Google Map

In the early Showa period (1926-), a boat wharf was built along the Meguro River to aid in the transport of materials by boat to small town factories. This is now Fureai Hiroba Park and is famed as a spot for cherry blossoms.

**Museum of Contemporary Sculpture** 現代彫刻美術館  
MAP > E-5  
▲ Google Map

This is an art gallery where modern sculptures are exhibited. There is an indoor exhibition room in the main building and four outdoor exhibition spaces, exhibiting around 150 pieces by Japanese sculptors.

**Hotel Gajoen Tokyo** ホテル雅叙園東京  
MAP > F-6  
▲ Google Map

The lavish space of the Museum Hotel, which was formerly an authentic Japanese style restaurant, is decorated with art and craft pieces which have been handed down since its founding. The "100 Step Stairway" is particularly famous, and each room of the 7 banquet halls connected by the stairs has different styles showcasing facets of the world of Japanese beauty.

**Otori Jinjya shrine** 大鳥神社  
MAP > E-5  
▲ Google Map

This is one of the "Nine Shrines of Edo" and boasts a history of around 1200 years, with its god protecting Meguro. This is also called the "Meguro Prayer Hall", getting its name from the granting of the prayers of Prince Yamato Takeru.

**Meguro Parasitological Museum** 目黒寄生虫館  
MAP > E-6  
▲ Google Map

This is a research museum specializing in parasites which has few equivalents worldwide. It has around 300 specimens and materials on display on parasites which attach themselves to people or animals. You can buy original goods and books at the museum's shop.

**Banryuji Temple** 蟻窠寺  
MAP > E-6  
▲ Google Map

The wooden sitting statue of Amidayorai (Amitabha Tathagata) in the main hall is a designated tangible cultural property (sculptures) of the Tokyo metropolis and is thought to have been made using the yoseukuri technique in the 10th to 12th century. Benzaiten, the Goddess of Music and one of the Yamanote Seven Gods of Good Fortune, is enshrined on the grounds.

**Ryusenji Temple (Meguro Fudosen)** 湧泉寺 (目黒不動尊)  
MAP > E-6  
▲ Google Map

The oldest immovable sacred Buddhist site in the Kanto region, founded in 808, and one of the three great Fudo temples of Japan. There is a shrine fire on the 28th of each month with many open-air stalls. Ebisu, one of the Yamanote Seven Gods of Good Fortune, is enshrined on the grounds.

**Jyakuzuregawa Green Way** 蛇崩川緑道  
MAP > C-4/D-4  
▲ Google Map

It is said that in the past a large snake appeared and ran amok in the Jyakuzuregawa and broke the land which gives the river its kanji of 蛇 (ja. snake) "崩 (kuzure, broken)". Now it is a culvert known to ward residents as the Jyakuzuregawa Green Way.

**Nakameguro Park** 中目黒公園  
MAP > E-4  
▲ Google Map

This is a 22000m<sup>2</sup> park equipped with a Health and Sports Plaza where you can enjoy the verdant area for rest and observation, various events, and youth soccer. It also has a role as a disaster prevention park as it is equipped with disaster prevention facilities.

**Nakameguro Hachiman Jinja Shrine** 中目黒八幡神社  
MAP > D-4  
▲ Google Map

This is said to have been built around the early Edo period (1700s). It is known as the local guardian deity with a shrine sealing held every other month popular with females. It is also said to benefit one's betting luck.

**Shokakuji Temple** 正覚寺  
MAP > D-4  
▲ Google Map

Founded in 1619. This is a temple associated with the lineage of Masamune Date, and Amida Nyorai (Amitabha Tathagata) is the principle object of worship. Moshimoin, the Goddess of Childbirth and Children, is enshrined here. It has such a calm atmosphere that you might forget you are in the streets of Nakameguro.

**Meguro History Museum** めぐろ歴史資料館  
MAP > E-4  
▲ Google Map

The history of Meguro and the changing lifestyles of its people from the Palaeolithic times of 25,000 years ago through to today explained with easily understandable resources. Various planned exhibitions are held in addition to the permanent exhibition.

**Museum of Contemporary Sculpture** 現代彫刻美術館  
MAP > E-5  
▲ Google Map

This is an art gallery where modern sculptures are exhibited. There is an indoor exhibition room in the main building and four outdoor exhibition spaces, exhibiting around 150 pieces by Japanese sculptors.

## East Area Meguro / Shimo-Meguro Area

**Hotel Gajoen Tokyo** ホテル雅叙園東京  
MAP > F-6  
▲ Google Map

The lavish space of the Museum Hotel, which was formerly an authentic Japanese style restaurant, is decorated with art and craft pieces which have been handed down since its founding. The "100 Step Stairway" is particularly famous, and each room of the 7 banquet halls connected by the stairs has different styles showcasing facets of the world of Japanese beauty.

**Kaifukuji Temple** 海福寺  
MAP > E-6  
▲ Google Map

A Zen temple opened by a venerable Ming priest in 1658. The temple bell on the grounds is a designated tangible cultural property (craft) of the Tokyo Metropolitan Government. It was transferred to Meguro in 1910.

**Gohyaku Rakanji Temple** 五百権満寺  
MAP > E-6  
▲ Google Map

305 of the around 530 arhat (Rakan) statues created over 300 years ago still remain and can be viewed today. Arhats are the Buddha's pupils and it is said that these are modelled on the 500 pupils who gathered when the Buddha passed away.

**Takoyakushi Jojuin Temple** たこ業師 成就院  
MAP > E-6  
▲ Google Map

Enshrines the image of Yakushi Nyorai supported by an octopus. It is said that great fortune ("takou") can be attained, with the octopus suckers helping absorb wealth (fortune/money) and banish sickness. Rubbing stones said to cure anything if you have faith and make a wish are also for sale.

**Ryusenji Temple (Meguro Fudosen)** 湧泉寺 (目黒不動尊)  
MAP > E-6  
▲ Google Map

The oldest immovable sacred Buddhist site in the Kanto region, founded in 808, and one of the three great Fudo temples of Japan. There is a shrine fire on the 28th of each month with many open-air stalls. Ebisu, one of the Yamanote Seven Gods of Good Fortune, is enshrined on the grounds.

**Daienji Temple** 大圓寺  
MAP > F-5  
▲ Google Map

Said to have its origins in the opening of a prayer hall after the enshrining of Daichini Nyorai by a particular ascetic in the early Edo period (1700s). Its highlight is the more than 500 stone effigies of Buddha. On the grounds, one of the Yamanote Seven Gods of Good Fortune, Daikokuten (the God of Wealth), is enshrined. It is famed for improving fortune and luck in love.

**Kaifukuji Temple** 海福寺  
MAP > E-6  
▲ Google Map

A Zen temple opened by a venerable Ming priest in 1658. The temple bell on the grounds is a designated tangible cultural property (craft) of the Tokyo Metropolitan Government. It was transferred to Meguro in 1910.

**Gohyaku Rakanji Temple** 五百権満寺  
MAP > E-6  
▲ Google Map

305 of the around 530 arhat (Rakan) statues created over 300 years ago still remain and can be viewed today. Arhats are the Buddha's pupils and it is said that these are modelled on the 500 pupils who gathered when the Buddha passed away.

**Takoyakushi Jojuin Temple** たこ業師 成就院  
MAP > E-6  
▲ Google Map

Enshrines the image of Yakushi Nyorai supported by an octopus. It is said that great fortune ("takou") can be attained, with the octopus suckers helping absorb wealth (fortune/money) and banish sickness. Rubbing stones said to cure anything if you have faith and make a wish are also for sale.

**Ryusenji Temple (Meguro Fudosen)** 湧泉寺 (目黒不動尊)  
MAP > E-6  
▲ Google Map

The oldest immovable sacred Buddhist site in the Kanto region, founded in 808, and one of the three great Fudo temples of Japan. There is a shrine fire on the 28th of each month with many open-air stalls. Ebisu, one of the Yamanote Seven Gods of Good Fortune, is enshrined on the grounds.