

TimeOut

TOKYO

in association with



HOTEL
VILLA
FONTAINE

THINGS TO DO AROUND HANEDA

while staying at **Hotel Villa Fontaine Haneda Airport**

Tokyo International Airport



24 hours at Haneda Airport

How to spend a quality day in the Terminal 3 (the International Terminal)



Morning

Combine soaking with plane-watching

Perched on the 12th floor of Haneda Airport Garden, the airport's very own hot-spring spa lets you admire planes landing and taking off from the comfort of an open-air tub. You can see as far as Mt Fuji on clear days, and even the nearby industrial park looks rather dashing all lit up after dark. The facility is open around the clock and welcomes tattooed bathers.

→Izumi Tenku no Yu. 24 hours daily (baths unavailable 10am to 12.30pm due to cleaning).

hvf.jp/eng/hanedairport-grand/spa.



Start your day with a buffet

Indulge in a Japanese-style morning meal with grilled fillets of fresh fish or some udon cooked to order – or play it safe with picks from the plentiful Western-style buffet – at Haneda's premier breakfast spot. Grande Aile opens at 6am every morning and has an excellent selection of kids' and baby meals – the latter are made with organic ingredients.

→Grande Aile. 6am-10am daily (last orders 9:30am).

hvf.jp/eng/hanedairport-grand/restaurants.

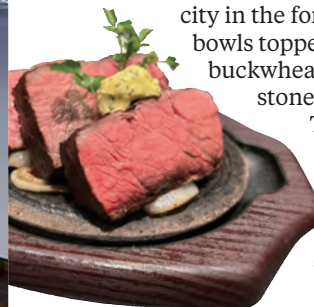


Daytime

Get a taste of Tokyo

The décor here evokes old Edo (as Tokyo was known before 1868), while the food showcases the best of the contemporary city in the form of capital essentials such as rice bowls topped with luscious tuna, 100-percent buckwheat noodles, meat cooked on a hot stone, and shoyu ramen seasoned with Tokyo-made soy sauce. Electrical outlets are available, so you can charge up your devices while chowing down.

→Oedo Food Hall. 11am-10pm daily (last orders 9pm). shopping-sumitomo-rd.com/haneda/shop/detail501.



Take a breather over tea

Green tea giants Itoen's Haneda tearoom entices tired travellers with quality brews and a line-up of tea-incorporating sweets. Sit down for some matcha soft serve or anmitsu (a mix of sweet bean paste, agar jelly and fruit) topped with hojicha ice cream, and buy bags



of green tea to take home at the adjacent shop.

→Saryo Itoen. 8am-10pm daily.

https://tokyo-haneda.com/en/shop_and_dine/detail/tenant_00075.html.



Evening



Bar & Lounge The Throne



Hanayama Udon Haneda Airport Garden



Ogura Haneda Airport

Raise a glass to the city

Watch the sun set beyond the river outside and the sprawling factories on the opposite shore flicker to life as you sip some fine Japanese whisky at this classy but cosy bar, located right by the lobby in Hotel Villa Fontaine Grand/Premier Haneda Airport. The artisanal cocktails are worth a punt, too.

→Bar & Lounge The Throne. 2.30pm-1am daily (last orders 12.30am).
hvf.jp/eng/hanedaairport-premier/restaurants.

Slurp award-winning udon

Hanayama is famous for extra-wide noodles known as Himokawa udon – wide, slippery smooth ribbons that are on the soft side but still have a good bite. Sample them with slices of brand-name pork and a soft-boiled egg as part of the signature Onikama, a dish that's taken home the grand prize at Japan's premier udon competition several times over.

→Hanayama Udon Haneda Airport Garden. 11am-3.30pm (last orders 3pm), 5pm-10pm (9pm) daily.
hanayamaudon.co.jp/haneda.

Warm up from the inside

Many a local athlete and celebrity swears by them, and now you can savour Ginza oden temple Ogura's servings of fish cakes, seasonal vegetables, meat and more – all simmered to soft perfection in a flavourful clear broth – without leaving the airport. Big eaters will want to explore the back side of the menu, too: besides oden, Ogura serves quality sashimi, tempura and unagi.

→Ogura Haneda Airport. 11am-10pm daily (last orders 9.30pm).
ogura-hanedaakouku.gorp.jp.



©Nintendo/Creatures - GAME FREAK - TV Tokyo - ShopNo JF Kikkaku ©Pokémon

Grab some grand gifts

Forget the gacha machines: your last-minute souvenir shopping is best done at this purveyor of artisanal gifts such as puzzles, dolls and other handmade items crafted from wood and paper using traditional techniques – and motifs ranging from One Piece to Godzilla.

→Takumi Shop Haneda Airport Garden. 10am-8pm daily.
shopping-sumitomo-rd.com/haneda/shop/detail558.

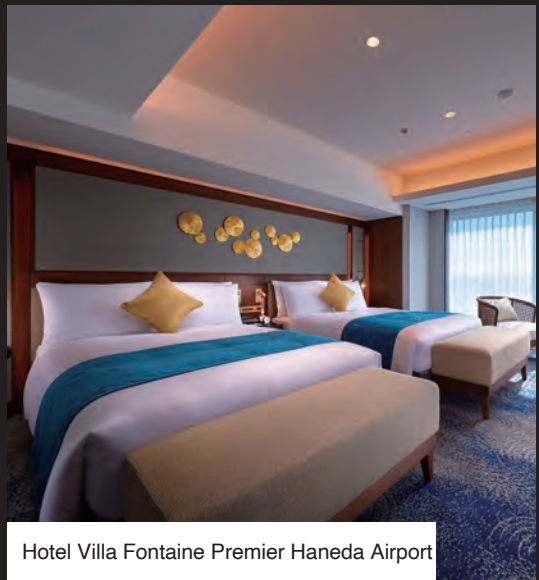


Stay

Stay in style

One of Japan's biggest and boldest airport hotels, the twin Villa Fontaine properties occupy floors 2 to 12 of the Haneda Airport Garden complex and encompass around 1,700 rooms across the luxury-grade Hotel Villa Fontaine Premier and the smart and functional Hotel Villa Fontaine Grand. Plane-spotters, take note: some of the rooms boast runway views.

→Hotel Villa Fontaine Grand/Premier Haneda Airport.
hvf.jp/eng/hanedaairport-grand.



Hotel Villa Fontaine Premier Haneda Airport



Direct to the city

The spots Tokyoites are talking about now

One of the many things that make Haneda Airport great is its wealth of direct bus and train connections to central Tokyo and key cities across Japan. Non-stop express bus service is available to destinations such as Yokohama, Osaka, Nagoya, Toyama and Kanazawa, as well as ski and spa resorts like Hakuba, Zao and Ikaho Onsen, while the Tokyo Monorail and Keikyu Railway take you straight to the heart of Tokyo in no time.

Here we've rounded up some of the most exciting spots in Tokyo and farther afield that are supremely easy to get to from the Haneda area.

TRAVEL TIMES

HANEDA AIRPORT



	60min	NAKANO
	35min	SHINJUKU
	40min	SHIBUYA
	30min	TOKYO
	25min	SHINBASHI



← More information on buses.



TOKYO

← Ozashiki Tempura Tenmasa

Founded in 1937, this tempura specialist's sky-high Marunouchi restaurant serves up a classic Japanese dining experience. All rooms offer sunken kotatsu-style seating, with two of them featuring U-shape counters presided over by a chef preparing textbook tempura in front of diners upon order. The tempura omakase meals highlight shrimp from Kyushu as well as vegetables and seasonal seafood from across Japan.

→ Tokyo Station - Direct Keikyu line or Tokyo Monorail train, with transfer to the JR Yamanote line.

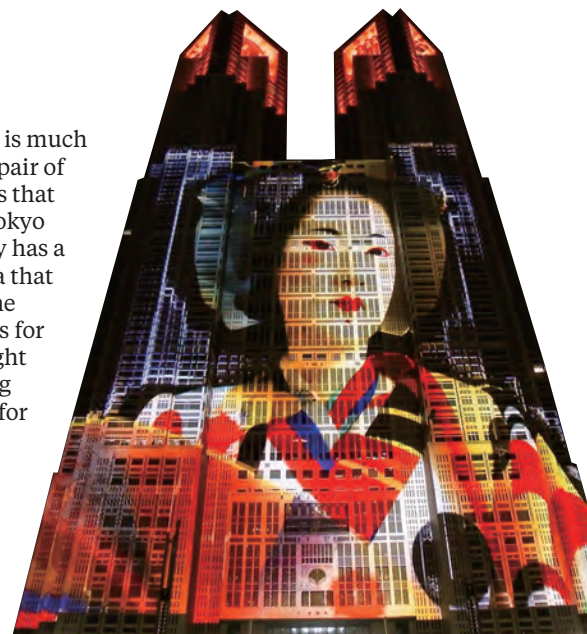
Marunouchi Bldg 35F, 2-4-1 Marunouchi, Chiyoda.
ten-masa.jp.

SHINJUKU

→ Tokyo Metropolitan Government Building

Kenzo Tange's monolithic edifice is much friendlier than it looks, hosting a pair of free 200-metre-high observatories that offer jaw-dropping views of the Tokyo skyline. The southern observatory has a piano decorated by Yayoi Kusama that anyone can play, while at night the entire building turns into a canvas for the spectacular Tokyo Night & Light programme of projection mapping shows. Check the official website for schedule details.

→ Shinjuku - Direct bus service.
2-8-1 Nishi-Shinjuku, Shinjuku.
<https://www.metro.tokyo.lg.jp>.



SHINBASHI

← Grand Hammer

Promising to bring food and entertainment together in unexpected ways, this brand-new Shinbashi landmark showcases Japanese cuisine, culture and craziness across a total of nine floors packed with eateries in all shapes and styles. You can explore flavours from across the country in the food court-style yokocho area on the first and second floors, watch ama divers hunt for shellfish in the basement restaurant's



aquarium, and catch a show over dinner and drinks at The Grand Tokyo on the third floor. Other noteworthy quirks include a club full of claw machine games and a restaurant highlighting traditional geisha culture. And the action never stops – some parts of the building are open around the clock.

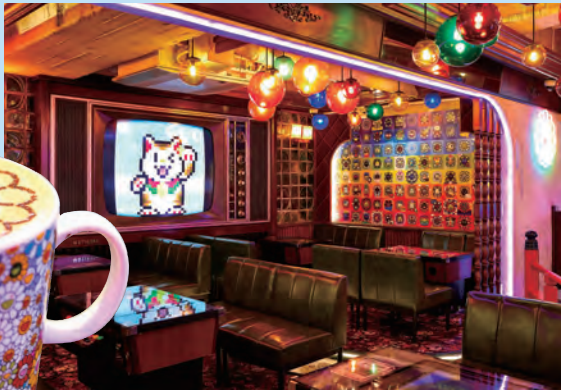
→ Shinbashi Station - Direct Keikyu line train connecting to the Toei Asakusa subway line.
2-8-5 Shinbashi, Minato.
grandhammer.jp.

NAKANO

↓ Coffee Zingaro

This art-filled café run by world-renowned contemporary artist Takashi Murakami is a welcoming spot in the anime and manga shop-filled Nakano Broadway. Retro kissaten vibes blend with Murakami's colourful and quirky aesthetic in the form of décor, food and drink inspired by the artist's signature flower motif. Coffee Zingaro is set up with tables that double as gaming consoles, and you can purchase special flower coins to play games like Mario Bros, Donkey Kong and Street Fighter while munching on Murakami-style muffins and pancakes.

→ Nakano - Direct bus service.
2F, 5-52-15 Nakano, Nakano.
zingarokk.com/news/33774.



SHIBUYA



Shibuya Scramble Square

↑ Shibuya Sky

Catch the best views of Tokyo from the Sky Stage, a 360-degree open-air observation facility on the roof of Shibuya Scramble Square, located directly above the iconic Scramble Crossing and at 229 metres the highest point in the ever-buzzy Shibuya district. Shibuya Sky, however, is more than just a rooftop lookout: it includes an indoor section on the 46th floor, where you can sit back with a drink as you enjoy the aerial views of Tokyo at any time of day regardless of the weather.

→ Shibuya - Direct Keikyu line or Tokyo Monorail train, with transfer to the JR Yamanote line.
2-24-12 Shibuya, Shibuya (connected to Shibuya Station).
shibuya-scramble-square.com/sky.



Tips



TM & © Universal Studios. All rights reserved. © Nintendo

OSAKA

Universal Studios Japan

Home to the world's first Super Nintendo World as well as iconic characters and attractions from Hello Kitty and One Piece to Jaws, Universal Studios Japan (USJ) is one of Japan's most enduringly popular destinations. While the sprawling theme park shares some highlight rides like Harry Potter and the Forbidden Journey with its

American counterparts, the Japan location has its own set of unique thrills, with a new one having debuted just this December: Donkey Kong Country lets you meet the Donkey Kong in person and race through the jungle on the thrilling Mine Cart Madness ride.

→ Direct bus service.
2-1-33 Sakurajima, Konohana, Osaka.
<https://www.usj.co.jp/web/en/us>.



Other locations with direct bus service

- Hakuba
- Toyama
- Kanazawa
- Nagoya

More info →



Neighbourhood guide: Haneda

Haneda Airport is located in the southeastern Tokyo district of Ota. The area rose to prominence during the decades following World War II, when its many small-scale factories became crucial parts suppliers for Japan's industrial giants. Commercial activity centred on the Kamata neighbourhood, where countless eateries and watering holes sprung up to meet demand from local labourers.

Today one of the best spots in the city for eating and drinking well for pocket change, Kamata remains the beating heart of Ota. It's home to numerous izakaya-lined alleyways, gyoza dumpling joints and ramen shops that attract ceaseless custom from locals and out-of-towners alike. But Ota offers more than just cheap eats: visit-worthy historical sites include the majestic hilltop temple Ikegami Honmonji and Anamori Inari Shrine, where devotees come to pray for safe travels.



Music

← Pithecanthropus Erectus

Hidden away along the bar-lined Kamata alleyway affectionately known as Bourbon Road, this classic jazz bar was founded back in 1975, a time when establishments like it were popping up throughout Tokyo like mushrooms after rain. Most of its one-time competitors are long gone, but Pithecanthropus Erectus soldiers on unchanged: we've been told the interior looks exactly the same as 50 years ago, and nothing suggests otherwise. The vinyl collection, meanwhile, has grown to encompass some 2,000 records, which can be admired casually over reasonably priced tipples. Live shows take place here a few times per year. Note: payment is by cash only.

→ 7-61-8 Nishi-Kamata, Ota (Kamata Station).

kamata-enjin.com.

Restaurant

↙ Charume

After honing his skills at one of Tokyo's most hallowed ramen temples, Kazumi Iwase returned to his native Ota to set up a 'standard' noodle joint serving mainly the local community. But word got out quickly: Iwase's heavenly clear soup – a mixture of chicken stock and seafood broth incorporating konbu and several types of smoked fish flakes – has won adherents far and wide. His tour de force is the standard chuka soba, Tokyo's classic style of shoyu ramen, made here by mixing the aforementioned soup with a tare crafted with unpasteurised soy sauce for an explosion of aroma and flavour. Square cuts of moreish char siu pork complete the memorable dish.

→ 2-6-12 Haginaka, Ota (Kojiya Station).

x.com/indies_charume.





Anamori Inari Shrine

Things to do

← Anamori Inari Shrine

A tunnel of bright red torii gates leads up to this 200-year-old shrine that originally stood on the land now occupied by Haneda Airport. Rebuilt in its current location to help shield what later became the airport from the waves of Tokyo Bay, it enshrines Inari, the deity of prosperity. You'll find small statues of foxes throughout the grounds, as the fox is considered the messenger of Inari, and a larger likeness of the animal stands guard outside Anamori Inari Station. Those feeling anxious about an upcoming trip may want to pay the shrine a visit, as the Inari deity is also believed to shield travellers from harm. In fact, Anamori Inari has been worshipped as a protector of air travel since the early days of aviation in Japan.

→ 5-2-7 Haneda, Ota (Anamori-Inari Station).
anamori.jp.

Shopping



↑ Yuzawaya

Now a nationwide chain with some 70 outlets, Yuzawaya was born in Kamata back in 1955 and there's still no hobby shop in the country more impressive than the crafts giant's sprawling Main Store. Extending across three buildings, the emporium attracts handicrafts enthusiasts and serious cosplayers alike with a selection of some 25,000 different clothing fabrics, 20,000 types of buttons, 9,000 varieties of yarn, 5,000 kinds of ribbons, miscellaneous embroidery items and accessories, sewing machines, painting and calligraphy supplies, stationery and much, much more. If it's crafts-related and you can imagine it, Yuzawaya probably stocks it.

→ 8-23-5 Nishi-Kamata, Ota (Kamata Station).
www.yuzawaya.co.jp/shop/detail/264.html.



Bar

← Bar Wakabayashi

If you need a change of boozy scenery, leave the izakaya and sake bars behind and seek out this tequila temple in Kamata. It's owned by Japan's only certified mezcal ambassador, whose passion for Mexican spirits has driven him to assemble a collection of 300 types of tequila and 150 kinds of mezcal, as well as several bottles of less well-known distilled beverages including raicilla, bacanora and sotol. If you aren't sure what drink to start with, make sure to ask the man behind the counter for recommendations.

→ City Plaza Kamata, 7-5-14 Nishi-Kamata, Ota (Kamata Station).
bar-wakabayashi.com.

Café

↙ Rengetsu Café

Worth the trip out to Ikegami all on its own, the wonderfully retro Rengetsu Café is set inside a gorgeous traditional home built in 1933. The structure looks just like it did back then from the outside, and while the interior on the ground floor has received a chic upgrade, the second floor has a traditional Japanese setup with tatami seating. As for the food, you'll want to come hungry: curry, karaage fried chicken and other rather substantial meals are the name of the game, while the drinks menu extends from colourful juice and soda concoctions to craft beer.

→ 2-20-11 Ikegami, Ota (Ikegami Station).
rengetsu.net.



timeout.com/
tokyo

Time Out Tokyo
5-9-9-101 Hiroo
Shibuya-ku
Tokyo 150-0012 Japan
Tel 03-5792-5721
Fax 03-5792-5723
Published January 31 2025

For inquiries contact:
info@timeout.jp

© 2025 ORIGINAL Inc.
Unauthorised reproduction of
text and images prohibited.

Publisher
Hiroyuki Fushitani

Executive Vice President
Akiko Toya

Editorial

Project Editors
Ili Saarinen
Genya Aoki

Editor
Kaia Imada

Writer
Aya Hasegawa

Contributor
Kaoru Hoshino
Shota Nagao

Design
MASUDA KOHBOH Inc.

Photographer
Kisa Toyoshima
Keisuke Tanigawa

Cover Photographer
Doctoregg

Administration
Momo Ando

Special Thanks
Sumitomo Fudosan
Villa Fontaine Co., Ltd.
Taku Saito



Premier

Villa Fontaine Grand / Premier Haneda Airport



Premier

All rooms have river views* /
Direct access to the airport, trains and buses /
24-hour check-in / Babies welcome / Panorama baths on the top floor
*Premier only



Grand

 HOTEL VILLA FONTAINE



Grand