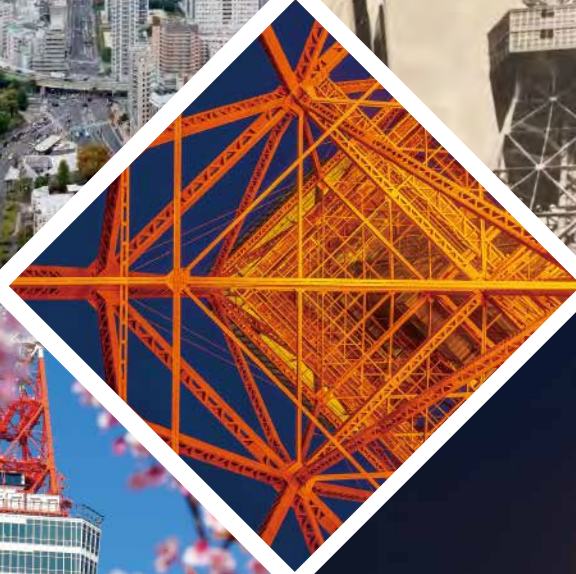
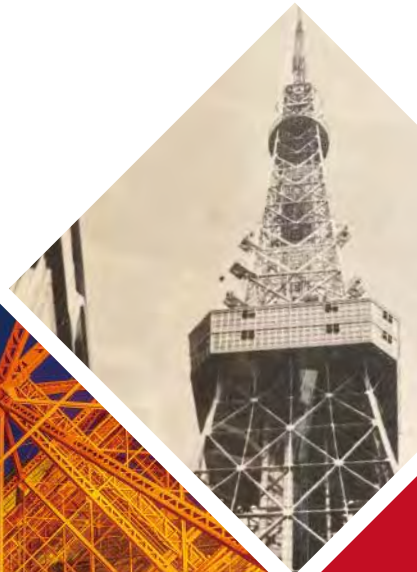


TOKYO TOWER



TOP DECK

Advance reservations and time slot system



TOKYO DIAMOND TOUR

Just 70 individuals can experience this special tour each day

Scan for more information



TOP DECK TOUR

A hands-on observation tour to experience the history of Tokyo Tower



Scan for more information



MAIN DECK

2F | Offering panoramic views of Tokyo from the 2F observation deck



At a height of 150 meters, this observation deck offers a 360-degree view of the city of Tokyo



See an enthralling sunset, where Tokyo's buildings are tinted by the setting sun



Breathtaking and unforgettable night views

Tower Daijingu Shrine The shrine nearest the sky in Tokyo's 23 cities



1F | A thrilling must-see at Tokyo Tower
Skywalk Window

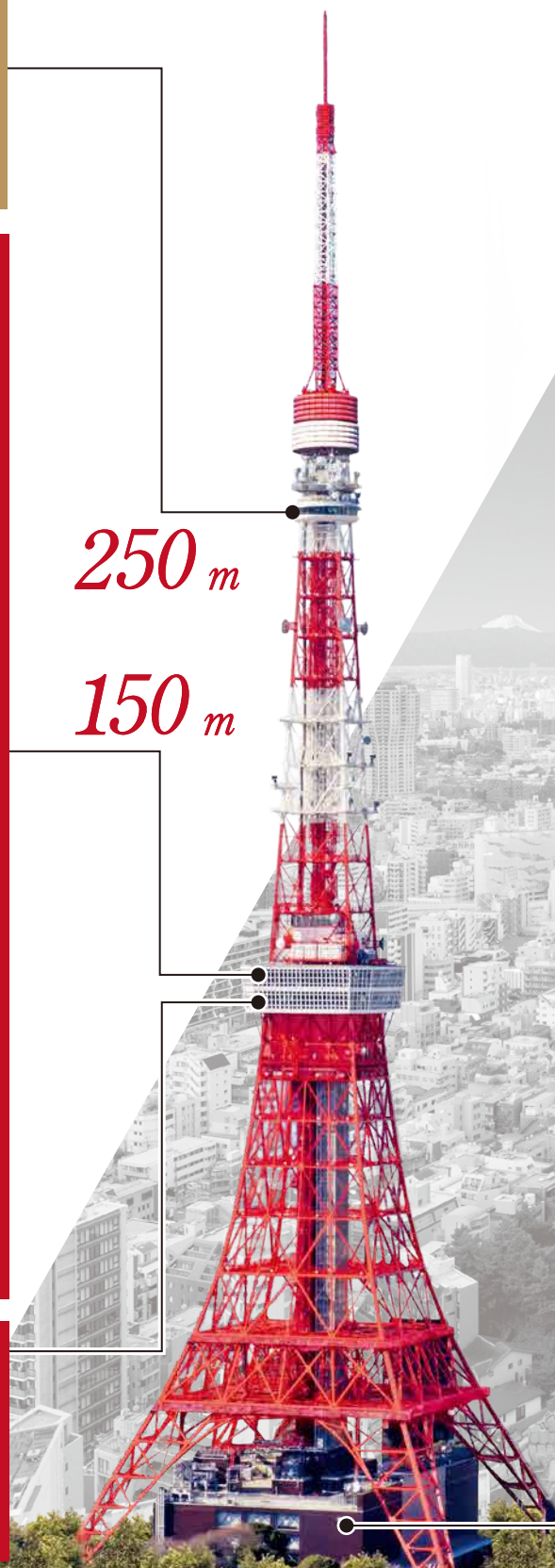
A glass floor with a view straight down 145 meters! Let your whole body experience the height of Tokyo Tower as you look down through the transparent floor. Feel the excitement as if you are floating in the air.



333m

250m

150m



Rainbow Bridge

South

Metropolitan Expressway

Odaiba/Haneda area

Mt. Fuji



Roppongi Hills

West

Azabudai Hills

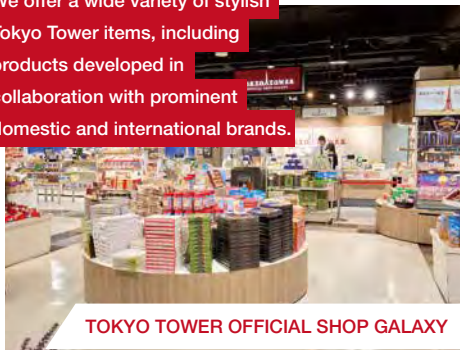
Shibuya/Shinjuku area

FOOT TOWN

Official Tokyo Tower merchandise is available here!

3F

We offer a wide variety of stylish Tokyo Tower items, including products developed in collaboration with prominent domestic and international brands.



TOKYO TOWER OFFICIAL SHOP GALAXY



Many of the unique products are only available here! A wide variety of individually packaged souvenirs are available, allowing you to do your Tokyo Tower souvenir shopping here.



FOOD COURT



You will find the 2nd Floor entrance/exit here!

2F



Tokyo Banana, a popular Tokyo souvenir, is also available in a wide range of options!

TOKIO333

You will find Tokyo souvenirs here! Tokyo Souvenir Town



You will find the 1st Floor main entrance here!

1F



Operation Center



Elevator Lobby



Histories Alley

Event



Spring



Summer



Autumn



Winter



The observation deck also hosts seasonal events!

*Photographs of the events may differ from the actual events.



North

A complete view of Tokyo from the center of city

East

Tokyo Bay

Zojiji Temple

Toranomon Hills

Imperial Palace/Marunouchi area

Shiodome/Asakusa area

TOKYO DIAMOND TOUR

This special tour is limited to a maximum of 70 people per day.
 Enjoy free drinks and snacks in the “Maple Lounge”, which is exclusive to participants.
 The elevator is reserved exclusively for participants, so there’s no waiting time
 and you’ll be whisked smoothly to the Top Deck.
 Guests will be accompanied by dedicated tour performers and attendants.
 A commemorative photo will be given as a gift.
 The Lounge and Main Deck (150m) can be used as many times as you like on the day of the tour.



*Please gather at the Maple Lounge on the 1st floor of Foot Town 15 minutes before the start of the tour.
 *If you are late, you will not be able to participate in the tour.

Business Hours	12:00 / 13:00 / 14:00 / 15:00 / 16:00 / 17:00 / 18:00 *Maximum of 10 people per tour.			
Observation Deck Prices	Adults	High School Students	Elementary and Junior High School Students	Children (Age 4 or Older)
	General Admission	7,000 yen	6,500 yen	4,700 yen

Hours & Admission

	Main Deck (150 m)	Top Deck Tour (150 m & 250 m)																																																
Business Hours	9:00–23:00 Last admission at 22:30 (may be earlier on busy days)	9:00–22:45 *Advance reservations and time slot system Last available tours are 22:00–22:15																																																
Observation Deck Prices	<table border="1"> <tr> <th></th> <th>Adults</th> <th>High School Students</th> <th>Elementary and Junior High School Students</th> <th>Children (Age 4 or Older)</th> </tr> <tr> <td>General Ticket Prices (Groups of 19 or Fewer)</td> <td>1,500 yen</td> <td>1,200 yen</td> <td>900 yen</td> <td>600 yen</td> </tr> <tr> <td rowspan="2">Group Ticket Prices</td> <td>Groups of 20 to 49</td> <td>1,350 yen</td> <td>1,080 yen</td> <td>810 yen</td> <td>540 yen</td> </tr> <tr> <td>Groups of 50 or More</td> <td>1,200 yen</td> <td>960 yen</td> <td>720 yen</td> <td>480 yen</td> </tr> <tr> <td>School Group Ticket Prices</td> <td>-</td> <td>800 yen</td> <td>600 yen</td> <td>400 yen</td> </tr> </table>		Adults	High School Students	Elementary and Junior High School Students	Children (Age 4 or Older)	General Ticket Prices (Groups of 19 or Fewer)	1,500 yen	1,200 yen	900 yen	600 yen	Group Ticket Prices	Groups of 20 to 49	1,350 yen	1,080 yen	810 yen	540 yen	Groups of 50 or More	1,200 yen	960 yen	720 yen	480 yen	School Group Ticket Prices	-	800 yen	600 yen	400 yen	<table border="1"> <tr> <th></th> <th>Adults</th> <th>High School Students</th> <th>Elementary and Junior High School Students</th> <th>Children (Age 4 or Older)</th> </tr> <tr> <td rowspan="2">General Ticket Prices</td> <td>Same-Day Tickets at Counter</td> <td>3,500 yen</td> <td>3,300 yen</td> <td>2,300 yen</td> <td>1,700 yen</td> </tr> <tr> <td>Advance Online Reservations</td> <td>3,300 yen</td> <td>3,100 yen</td> <td>2,100 yen</td> <td>1,500 yen</td> </tr> <tr> <td>Group Ticket Prices</td> <td>Groups of 11 or More</td> <td>3,200 yen</td> <td>3,000 yen</td> <td>2,000 yen</td> <td>1,400 yen</td> </tr> </table>		Adults	High School Students	Elementary and Junior High School Students	Children (Age 4 or Older)	General Ticket Prices	Same-Day Tickets at Counter	3,500 yen	3,300 yen	2,300 yen	1,700 yen	Advance Online Reservations	3,300 yen	3,100 yen	2,100 yen	1,500 yen	Group Ticket Prices	Groups of 11 or More	3,200 yen	3,000 yen	2,000 yen	1,400 yen
		Adults	High School Students	Elementary and Junior High School Students	Children (Age 4 or Older)																																													
	General Ticket Prices (Groups of 19 or Fewer)	1,500 yen	1,200 yen	900 yen	600 yen																																													
	Group Ticket Prices	Groups of 20 to 49	1,350 yen	1,080 yen	810 yen	540 yen																																												
Groups of 50 or More		1,200 yen	960 yen	720 yen	480 yen																																													
School Group Ticket Prices	-	800 yen	600 yen	400 yen																																														
	Adults	High School Students	Elementary and Junior High School Students	Children (Age 4 or Older)																																														
General Ticket Prices	Same-Day Tickets at Counter	3,500 yen	3,300 yen	2,300 yen	1,700 yen																																													
	Advance Online Reservations	3,300 yen	3,100 yen	2,100 yen	1,500 yen																																													
Group Ticket Prices	Groups of 11 or More	3,200 yen	3,000 yen	2,000 yen	1,400 yen																																													
*Free admission for tour conductors upon presentation of tour guide card		*Please be sure to arrive on time *Cancellation Policy applies																																																

Applying for Group Tour

- Make a reservation using the Group Reservation Form on the official website.
- Please refer to the Accessibility Information found on the official website for more information on discounts for persons with disabilities.
- Group payments are made at the Operation Center on Foot Town 1F.
- Please contact us with any questions you may have using the information below.

Scan for more information



Bus Parking

Parking fees for tour buses visiting the Tokyo Tower observation decks:

Tour buses can park for free during the tour.

*Subject to lump-sum payment at the Operation Center (group ticket counter)

*Consultation required for visits of two hours or more.



Tokyo Tower is conveniently located for seeing a wide variety of tourist attractions!

ACCESS

- Symphony Tokyo Bay Cruise Approx. 10 min.
- Kabukiza Theater Approx. 10 min.
- Haneda Airport Approx. 30 min.
- Maihama Station Approx. 30 min.



Contact

Sales Department, TOKYO TOWER Co., Ltd.
 4-2-8 Shiba Koen, Minato-ku, Tokyo

TEL.03-3433-5121
 FAX.03-3431-0529

