

東京  
TOKYO  
SHINA  
GAWA  
達人  
TATSUJIN

NEW!

Packed with spots ideal  
for nighttime fun!



# Nightlife Edition

Oi | Gotanda | Meguro | Tennozu | Hatanodai | Togoshi



# shinagawa

Shinagawa  
Tourist  
Information

一般社団法人 しながわ観光協会  
SHINAGAWA TOURISM ASSOCIATION

<https://shinagawa-kanko.or.jp>



\*Automated machine translations are  
available in the footer of the Shinagawa  
Tourism Association website.



# Oi's the place for a

The Azumakoji Restaurant Street in Oimachi is packed with fun drinking establishments. Nearby, you'll also find a horse racetrack, public baths, and other spots that make for an exciting night out!



Oimachi Sta. Map A

## Ganbari-tei

がんばり亭

This *yakiton* (grilled pork skewer) restaurant draws a lively crowd every night. The secret is in their fresh ingredients, which they get from the meat market every day, and their secret sauce. The homey atmosphere is part of their charm.

- ☎ 03-5461-3518 📍 5-3-13 Higashioi, Shinagawa-ku 🕒 5:00 PM–11:30 PM (last order at 11:00 PM) 🗓 Sat. and Sun.
- 📍 Brief walk from Oimachi Sta. on the JR, Rinkai, and Tokyu Oimachi Lines

Enjoy the nightlife to the fullest!



Immerse yourself in cutting-edge entertainment at a brand-new theater!



- 1 The theater seats 747 people. It's fully equipped with audio equipment capable of handling live music events.
- 2 The simple, modern exterior is eye-catching.

Oi Keibajo Mae Sta. Map B

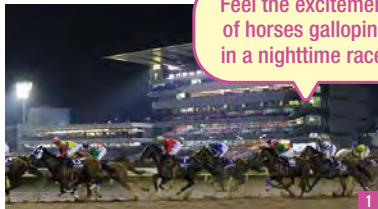
## Tokyo City Keiba 大井競馬場

A racetrack known for its "Twinkle Races," Japan's first nighttime horse races. Tokyo Mega Illumi, which features a fountain show and aurora-like displays, is a popular winter attraction on non-racing days.

Official website



- ☎ 03-3763-2151 📍 2-1-2 Katsushima, Shinagawa-ku 🕒 Twinkle Race: around 2:20 PM–around 9:00 PM / Daytime race: around 11:00 AM–around 5:30 PM \*Check the website for details 🗓 Check the website 📍 Approx. 2-min. walk from Oi Keibajo Mae Sta. on the Tokyo Monorail



Feel the excitement of horses galloping in a nighttime race!



- 1 The Twinkle Race, where horses race at night, is a thrilling experience!
- 2 Tokyo Mega Illumi includes a show in rainbow colors.

Oi Keibajo Mae Sta. Map C

## Theater H

シアターH

This theater opened in June 2024. As a new live entertainment venue, it stages a variety of productions, including musicals and plays.

Official website



- 📍 1-6-29 Katsushima, Shinagawa-ku
- 🗓 Depends on the show
- 🗓 Check the website
- 📍 Approx. 5-min. walk from Oi Keibajo Mae Sta. on the Tokyo Monorail



# tipsy night out!



Enjoy the ultimate bliss of devouring a steak with a glass of wine in hand!



## Oimachi Sta. Map D Cheeky Beef

チーキービーフ

A steakhouse where you can casually enjoy some meat and wine. Carefully selected lean cuts are their go-tos.

The restaurant's meticulously prepared onion sauce brings out the flavor of their meat.

☎ 03-6824-5429 📍 5-3-1 Higashioi, Shinagawa-ku 🕒 5:00 PM-1:00 AM the next day (last order at midnight) ☑ Sun. and national holidays 🚶 Brief walk from Oimachi Sta. on the JR, Rinkai, and Tokyu Oimachi Lines

Official account



1 Rump steak (220 g) for 2,300 yen. It's irresistibly juicy and flavorful. 2 Relax at counter seats in a casual setting. 3 Come on in through the noren curtains.

## Oimachi Sta. Map E Isamizushi

いさ美寿司

A standing sushi bar that serves high-quality Edomae sushi. The sushi is prepared with large toppings and less rice, so you can enjoy the inherent flavors of the fish.

☎ 03-3474-8089 📍 5-3-13 Higashioi, Shinagawa-ku 🕒 6:00 PM-11:00 PM (available until sold out) ☑ Sun. and occasional closings on Sat. and national holidays 🚶 Brief walk from Oimachi Sta. on the JR, Rinkai, and Tokyu Oimachi Lines

Official account



Eat super fresh Edomae sushi while standing!



1 The 1,800-yen Omakase Jo. The owner handpicks the ingredients at the market.

2 The atmosphere is friendly and welcoming, with many regular customers.

A public bathhouse with the latest facilities and craft beer!



1 A clean and spacious bathing area with washing stations in an octagonal configuration.

2 Established in 1950, this public bathhouse has been a local favorite for over 70 years.



## Oimachi Sta. Map F Suehiro-yu

すえひろ湯

This bathhouse is fully equipped with a concealed-stove sauna and an air tub, all while maintaining a retro atmosphere. After a good soak, you can enjoy craft beer curated by the owner.

Official website



☎ 090-4326-0485 📍 1-42-4 Oi, Shinagawa-ku 🕒 3:00 PM-1:00 AM the next day; 10:00 AM-1:00 AM the next day on Sat., Sun., and national holidays ☑ Tue. ☑ Approx. 4-min. walk from Oimachi Sta. on the JR, Rinkai, and Tokyu Oimachi Lines

Check here, too!



1 The 1,050-yen menchi-katsu (350 g) is at least 20 centimeters wide. 2 The sign says that Bulldog was established in 1949. However, its history stretches back further, to a time when it was just a humble shack among many.

## Oimachi Sta. Map G Restaurant Bulldog

洋食ブルドッグ

Official website



For almost 80 years, since before 1949, Bulldog has been serving generous portions of tasty Western-influenced cuisine. It's known for its deep-fried menchi-katsu (ground meat cutlet) and omurice (omelet over rice).

☎ 03-6712-1757 📍 Takayama Bldg. 1F, 5-17-4 Higashioi, Shinagawa-ku 🕒 11:30 AM-3:00 PM / 5:00 PM-9:00 PM; 11:30 AM-4:00 PM / 5:00 PM-8:00 PM on Sat., Sun., and national holidays ☑ Wed. and 3rd Thu. ☑ Approx. 2-min. walk from Oimachi Sta. on the JR, Rinkai, and Tokyu Oimachi Lines



1 Shabu-shabu with Waton Mochibuta pork, 1,980 yen per person (available in single portions). 2 The restaurant has a calming Japanese aesthetic. You can relax in the sunken floor seating.

## Oimachi Sta. Map H Denrai

電膏

Official website



Try dishes such as shabu-shabu and yakitori grilled pork skewers made with Waton Mochibuta pork, as well as 100% Japanese motsunabe offal hot pot. They also have a wide selection of refreshing citrus drinks.

☎ 03-5783-6685 📍 Kitabashi Bldg. 1F, 5-17-1 Higashioi, Shinagawa-ku 🕒 5:00 PM-11:30 PM (last order at 10:30 PM) \*Last order at 11:00 PM on Fri. only ☑ Sun. ☑ Approx. 1-min. walk from Oimachi Sta. on the JR, Rinkai, and Tokyu Oimachi Lines

# AREA Gotanda Meguro



## Unwind at popular

From popular wine and sake bars to trendy new spots, you'll find an array of late-night establishments to make the most of the night!

Enjoy a paella bursting with the flavors of the sea!



1 Enjoy a fun evening with their signature paella and a perfectly matched white wine. 2 The paella is thoroughly cooked from raw rice, absorbing all the seafood flavors. 3 They're located in an alley near the station, so you can drink without worrying about the time. 4 The interior has the ambiance of a bar.

Gotanda Sta. Map I

### Gotanda Bar Del Pescador 五反田漁師バル

A Spanish bar where you can enjoy various dishes made with fresh seafood procured daily. Pair them with one of their reasonably priced wines.

Official account



☎ 03-3441-8686

📍 1-13-6 Higashigotanda, Shinagawa-ku  
🕒 5:30 PM–midnight on weekdays (last order for food at 11:00 PM and for drinks at 11:30 PM); 5:00 PM–midnight on Sat. (last order for food at 11:00 PM and for drinks at 11:30 PM); 5:00 PM–11:00 PM on Sun. and national holidays (last order for food at 10:00 PM and for drinks at 10:30 PM)

📺 Obon summer holiday and year-end/New Year holidays 🕒 Approx. 1-min. walk from Gotanda Sta. on the Toei Asakusa Line or approx. 3-min. walk from Gotanda Sta. on the JR Yamanote and Tokyu Ikegami Lines

A sake bar with a great atmosphere ♪



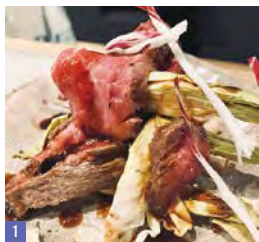
### Gotanda Sta. Map J sake.about

This sake bar has over 100 varieties of sake, including even rare brands. There is a standing bar, as well as a menu listing all genres of food made with seasonal ingredients.

Official account



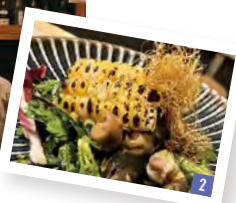
☎ 03-3494-8933 📍 Machihara Bldg. 1F, 3-8-3 Nishigotanda, Shinagawa-ku 🕒 7:00 PM–2:00 AM the next day on Mon.–Thu. (last order at 1:00 AM the next day); 7:00 PM–3:30 AM the next day on Fri. and Sat. (last order at 2:30 AM the next day) ☑ Sun. and occasional closings 🕒 Approx. 7-min. walk from Fudomae Sta. on the Tokyu Meguro Line or Gotanda Sta. on the Toei Asakusa Line, etc.



1 2 Try creative dishes featuring seasonal ingredients paired with some fine alcoholic drinks. 3 Light bar snacks are also served at the standing bar.



Spend a night discovering the appeal of sake and great food!





# bars and seasonal spots

Gotanda Sta. Map K

## Wine Bar & Grill TOKYO KITCHEN Gotanda Sakurakouji

肉バルメワイン酒場 東京食堂 五反田桜小路店

Choose from over 150 kinds of Japanese and international wines and try dishes such as beef tendon stewed in red wine, their specialty.

The restaurant has a shop with rare wines from around the world.

☎ 03-6417-4175 📍 Gotanda Sakurakouji, 1-12-1 Nishigotanda, Shinagawa-ku

🕒 Lunch: 11:30 AM–2:00 PM on weekdays (last order at 1:30 PM) / Dinner: 5:00 PM–11:00 PM on Mon.–Thu. and Sat. (last order at 10:00 PM); 5:00 PM–midnight on Fri. (last order at 11:00 PM) 🗓 Sun., national holidays, year-end/New Year holidays, and occasional closings 🕒 Approx. 2-min. walk from Gotanda Sta. on the JR Yamanote and Tokyu Ikegami Lines or approx. 3-min. walk from Gotanda Sta. on the Toei Asakusa Line



A bar where you can taste rare wines under an overpass!



- 1 The beef tendon stewed in red wine, which won the Gotanda Meat Festival G1 Grand Prix, is a must-try at 1,298 yen!
- 2 Try the house-made sangria, too.

Raise a pint of authentic UK draft beer!

Gotanda Sta. Map L

## THE GRAFTON

This pub serves a wide variety of drinks, including Japanese and international craft beers and ciders. The fish and chips and other bites made with seasonal ingredients are popular.



☎ 03-3491-9696 📍 Ito Bldg. Part III B1F, 2-26-5 Nishigotanda, Shinagawa-ku

🕒 6:00 PM–2:00 AM the next day on weekdays (last order for food at 1:00 AM the next day and for drinks at 1:30 AM the next day); 4:00 PM–midnight on Sat. and national holidays (last order for food at 11:00 PM and for drinks at 11:30 PM) 🗓 Sun. 🕒 Approx. 4-min. walk from Gotanda Sta. on various lines or Osakihirokoji Sta. on the Tokyu Ikegami Line



- 1 There is a great selection of drinks, including draft Guinness and Irish whiskey.
- 2 The large projector makes this pub perfect for watching sports.

Refresh yourself in a luxurious private sauna!

Gotanda Sta. Map M

## Private Sauna Ladle

プライベートサウナ Ladle

A Finnish sauna with only private rooms. These chic spaces feature two-meter-long Japanese hinoki (cypress) benches and aromatic water to throw on the sauna stones.



☎ 080-4905-1121 📍 Nishi-Gotanda Tateishi Bldg. 5F, 1-4-4 Nishigotanda, Shinagawa-ku

🕒 9:00 AM–10:30 PM (last entry) 🗓 Open year-round 🕒 One person: 3,780 yen for 60 min.; 4,780 yen for 80 min.; 5,780 yen for 100 min. \*Different fees apply for use by two or three people

🕒 Approx. 1-min. walk from Gotanda Sta. on the JR Yamanote Line or approx. 2-min. walk from Gotanda Sta. on the Toei Asakusa and Tokyu Ikegami Lines



Watch famous films in a historic movie theater with double-feature screenings!



- 1 The screen gives off warm retro vibes. The theater seats 88 people.
- 2 Established in 1955, the theater re-opened in 1975 as the current Meguro Cinema.



Meguro Sta. Map N

## Meguro Cinema 目黒シネマ

This is Meguro's only movie theater, where one ticket lets you see two movies. It screens a variety of genres, Japanese and Western, from Hollywood flicks to arthouse films.



☎ 03-3491-2557 📍 Meguro Nishiguchi Bldg. B1F, 2-24-15 Kamiosaki, Shinagawa-ku

🕒 Depends on the showtimes 🗓 Open year-round 🕒 1,600 yen for adults; 1,200 yen for jr. high / high school / university students; 1,100 yen for children ages 3–12 and elementary school students; 1,300 yen or more for late-show tickets 🕒 Approx. 3-min. walk from Meguro Sta. on the JR Yamanote Line or approx. 5-min. walk from Meguro Sta. on the Tokyu Meguro, Toei Mita, and Tokyo Metro Namboku Lines

Check here, too!



Osakihirokoji Sta. Map O

## Gotanda JP Building

五反田JPビルディング

Official website



Opened on April 26, 2024. This large complex, with three underground levels and 20 above-ground levels, consists primarily of office space and has a hotel, commercial facilities, and an event hall.

📍 8-4-13 Nishigotanda, Shinagawa-ku

🕒 Depends on the facility 🕒 Approx. 1-min. walk from Osakihirokoji Sta. on the Tokyu Ikegami Line, approx. 5-min. walk from Gotanda Sta. on the JR Yamanote Line, etc.



## OMO's Chill Night Party

(OMO5 Tokyo Gotanda by Hoshino Resorts)

満チル夜のひととき (OMO5東京五反田 by 星野リゾート)

Enjoy a chill evening sitting on a rug and sipping drinks while admiring the nightscape from this 60-meter-high garden in the sky.

☎ 050-3134-8095 (OMO Reservation Center: 9:30 AM–6:00 PM) 🕒 8:30 PM–11:00 PM

🗓 Open year-round 🕒 Free entry; fees for menu items at OMO Cafe & Bar



## Gotanda Dining

五反田食堂

This food hall was designed to be a place in Gotanda where all kinds of people can relax and feel at home. It brings together food from a variety of famous and super popular restaurants.

🕒 7:30 AM–11:00 PM \*Depends on the store 🗓 Depends on the store



# Appreciate art and scenery with all five senses

Visitors are drawn to Tennozu for its location overlooking the canal and the works of art dotting the area. Take a stroll while stopping at the atmospheric restaurants and cafes.

Golden Cat © Tennoz Art Festival 2022 Art work by Yuriko Fukazawa



1

Tennozu Isle Sta. Map P

## Tennozu Isle Boardwalks

天王洲アイランドボードウォーク

Stroll along the canal or take a break at Tennozu Isle Waterfront Plazas Nos. 1 to 3. Take in the greenery and artwork as you watch the scenery change from day to night.

Official website



- 1 Higashishinagawa, Shinagawa-ku (Tennozu Isle Waterfront Plazas Nos. 1-3)
- Always open Open year-round
- Approx. 3-5-min. walk from Tennozu Isle Sta. on the Tokyo Monorail and Rinkai Line

This popular restaurant serves as a landmark for the Tennozu area!



1



2

- 1 The grilled mixed sausage plate with creole mustard and potato chips, 1,980 yen.
- 2 The night view is also fantastic.



2

- 1 There are five Golden Cat designs in different colors on the trash bins.
- 2 Chairs are provided here and there, so you can take breaks while exploring the area.
- 3 This work of art, inspired by a road sign found on the UK coast, has a playful hand-painted texture.



Tennozu Isle Sta. Map Q

## T.Y.HARBOR

This brewery restaurant is located right next to Tennozu. Enjoy the waterfront atmosphere from the craft beer bar, terrace, or floating lounge.

Official website



- ☎ 03-5479-4555
- 📍 2-1-3 Higashishinagawa, Shinagawa-ku
- 🕒 Lunch: 11:30 AM–last order at 2:00 PM on weekdays; last order at 3:00 PM on Sat., Sun., and national holidays / Dinner: 5:30 PM–last order at 9:00 PM / Craft beer bar: 11:30 AM–last order at 9:00 PM / River Lounge: 5:30 PM–last order at 9:00 PM
- 🚶 Approx. 5-min. walk from Tennozu Isle Sta. on the Tokyo Monorail and Rinkai Line

Enjoy the wood-fired grill in a sophisticated space with a gastropub theme!



1

Tennozu Isle Sta. Map R

## RIDE

Taste meat cooked on a wood-fired grill and a variety of other genre-defying dishes in a dining room that faces the canal. Depending on the occasion, private rooms and terrace seating are available.

Official website



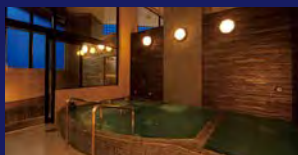
- ☎ 050-3184-2730 📍 Tennoz Central Tower Canal Garden 1F, 2-2-2 Higashishinagawa, Shinagawa-ku
- 🕒 Lunch: 11:30 AM–last order at 2:30 PM on weekdays / Dinner: 5:00 PM–last order at 9:00 PM on weekdays; 11:00 AM–last order at 9:00 PM on Sat. (lunch: last order at 2:30 PM); last order at 8:00 PM on Sun. and national holidays (lunch: last order at 2:30 PM) 📅 4th Sun. of Feb.
- 🚶 Approx. 4-min. walk from Tennozu Isle Sta. on the Tokyo Monorail or approx. 6-min. walk from Tennozu Isle Sta. on the Rinkai Line

- 1 The restaurant offers a wide range of à la carte dishes and multi-course meals that incorporate a variety of world cuisines, with a focus on Italian.
- 2 Savor recommended dishes prepared over a wood-fired grill in a restaurant with pleasant music.



2

## Check here, too!



Shimbamba Sta. Map S

Official website



## Tenjinyu 天神湯

This spa is popular for its dark-colored hot spring water pumped from 100 meters underground. Its rich mineral content is gentle on the skin, leaving it feeling moisturized after a soak.

- ☎ 03-3471-3562 📍 2-23-9 Kitashinagawa, Shinagawa-ku
- 🕒 3:00 PM–11:00 PM
- 🚶 Approx. 3-min. walk from Shimbamba Sta. on the Keiyo Main Line



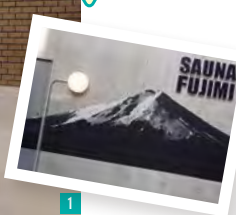
# AREA Hatanodai Togoshi

# Food & healing spaces that locals love

Bathing facilities that are perfect for refreshing yourself and eateries packed with regulars. Relax and recharge at these local spots!



This long-established bathhouse uses highly moisturizing, super soft water!



## Ebara-nakanobu Sta. Map T Sauna Fujimi 富士見湯

This bathhouse has a tub with tiny bubbles that naturally opens up your pores, making it easy to remove impurities. It also has a hokutolite bath, which is thought to promote natural healing.



1 Choose the bubble bath or hokutolite bath, depending on your condition and preferences. 2 The sauna is essentially reserved for men. It is reserved for women on the second Monday of every month (check the website).

☎ 03-3782-6120  
📍 1-3-8 Higashinakanobu, Shinagawa-ku  
🕒 3:00 PM–11:30 PM on weekdays and Sat.; noon–11:30 PM on Sun. (last reception at 11:15 PM) 📺 Wed. ¥550 yen for adults; 450 yen for jr. high school students; 200 yen for elementary school students; 100 yen for preschoolers (free entry for one preschooler per adult); 950 yen for the sauna  
🚶 Approx. 5-min. walk from Ebara-nakanobu Sta. on the Tokyu Ikegami Line

This is the place to go if you want to eat delicious fish!



## Hatanodai Sta. Map V Funatake 舟武

This “fresh catch” restaurant has been serving seafood caught off the Boso coast since they opened in 1970. The omakase platter is recommended to try some of their more unique offerings, such as sunfish.



☎ 03-3785-1719 📍 Sasaki Bldg. 1F, 5-7-9 Hatanodai, Shinagawa-ku 🕒 5:00 PM–last order at 11:00 PM; last order at 10:00 PM on Sun. 📺 Mon. ☎ Approx. 2-min. walk from Hatanodai Sta. on the Tokyu Oimachi and Ikegami Lines

Eat your fill of monja, a Tsukishima specialty, in Togoshi! The secret sauce is a must-try!



## Nakanobu Sta. Map U Nakanobu Onsen Matsu no Yu 中延温泉 松の湯

Immerse yourself in the traditional atmosphere of the gable-roofed building and Japanese garden, while decompressing at its extensive facilities, from the highly carbonated bath to the sauna.



☎ 03-3783-1832 📍 6-23-15 Togoshi, Shinagawa-ku 🕒 3:00 PM–midnight; opens at 10:00 AM on Sun. 📺 Mon. (or Tue. when Mon. is a national holiday) ¥550 yen for adults; 450 yen for jr. high school students; 200 yen for elementary school students; 100 yen for preschoolers (free entry for one preschooler per adult) 🚶 Approx. 2-min. walk from Nakanobu Sta. on the Tokyu Oimachi Line

A natural hot spring with a Japanese garden, tucked away in a shopping district!



1 Take a moment to relax in the open-air bath while admiring the Japanese garden. 2 The baths are all filled with natural hot spring water. The water is heated, filtered, recirculated, and chlorinated.



Savor each morsel of their signature dishes!



## Togoshi-koen Sta. Map W Tsukishima Monja Ku Togoshi Honten

This restaurant prepares authentic monja using carefully selected ingredients, including their secret dashi, tempura bits from a long-established tempura restaurant in Ginza, and seafood from Tsukiji. They also have some interesting items on the menu.



📍 月島もんじゃ 江戸越本店  
☎ 03-6426-1260 📍 Serenity Togoshi 2F, 5-18-6 Togoshi, Shinagawa-ku 🕒 Lunch: noon–last order at 2:00 PM / Dinner: 5:00 PM–last order at 10:00 PM 📺 No regular closings 🚶 Brief walk from Togoshi-koen Sta. on the Tokyu Oimachi Line

# Check out the latest information to enjoy Shinagawa to the fullest!



## GUIDE

Check these before you go!



### Shinagawa Tourism Association Brochure Gallery

URL <https://shinagawa-kanko.or.jp/tag/english>

You can view digital copies of various past brochures, including the Shinagawa Tatsujin series. Explore Shinagawa with just your smartphone in hand!



Shinagawa Tourism Association  
Cinnamoroll

©2025 SANRIO CO., LTD.  
APPROVAL NO. L660022



## Follow us on social media!

Hatachi no Ryoma's X account



©DLE



I'm Hatachi no Ryoma, the apprentice Shinagawa Tourism Ambassador!  
I work hard every day to promote local history, food, and events!

Shinagawa Tourism Association's X account



Get the latest information on events, food, sightseeing spots, and more in the Shinagawa area.

"Cinnamoroll's Exciting Shinagawa Town" Instagram account

Follow Shinagawa Tourism Ambassador Cinnamoroll!  
Discover spots and events where you can encounter Cinnamoroll in Shinagawa, as well as great eats and places to go.



## Information

## Look no further for information on the Shinagawa City area!

### Shinakan PLAZA

Located just five minutes on foot from Oimachi Station. You can also buy Shinagawa souvenirs here.

📍 Oi Itchoe Kyodo Bldg. 1F, 1-14-1 Oi, Shinagawa-ku 🕒 9:30 AM–5:00 PM  
🗓 Sun., national holidays, and year-end/New Year holidays



### info & cafe SQUARE

A community space with a cafe that doubles as a tourist information center.

📍 Square Ebara 1F, 4-5-28 Ebara, Shinagawa-ku 🕒 11:00 AM–6:00 PM  
🗓 Wed. and year-end/New Year holidays



\*The information contained in this publication is current as of February 2025. \*All prices listed are tax-inclusive. Published in March 2025 by Shinagawa City  
\*Content and prices are subject to change without notice.

## SHINAGAWA MAP

