

Musashino City is a convenient base for tourists!

English

Musashino City Map



This wide area map covers unique areas around 3 stations in Musashino City and surrounding tourist spots.

Kichijoji

Fashionable town with a variety of aspects.

Mitaka North Area

An area rich in nature and good for a walk.

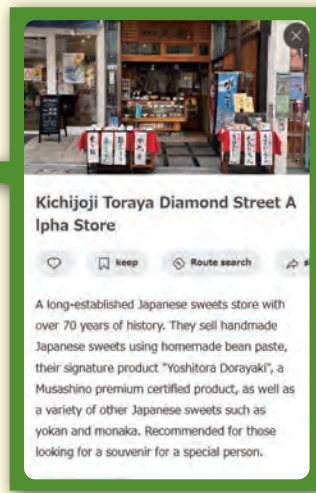
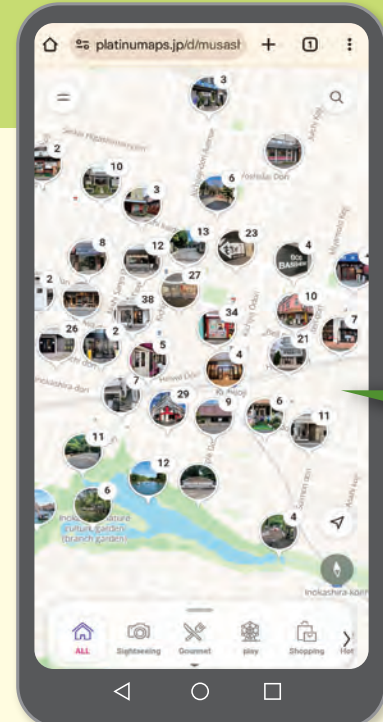
Musashisakai

Evolving town for families and students.

Click here for more tourist information in Musashino City.



Musashino Digital City Map



About 1000 pcs of information here!

Turn on your smartphone's location information and enjoy walking around Musashino City!

category



Premium souvenirs from Musashino City
むさしのプレミアム



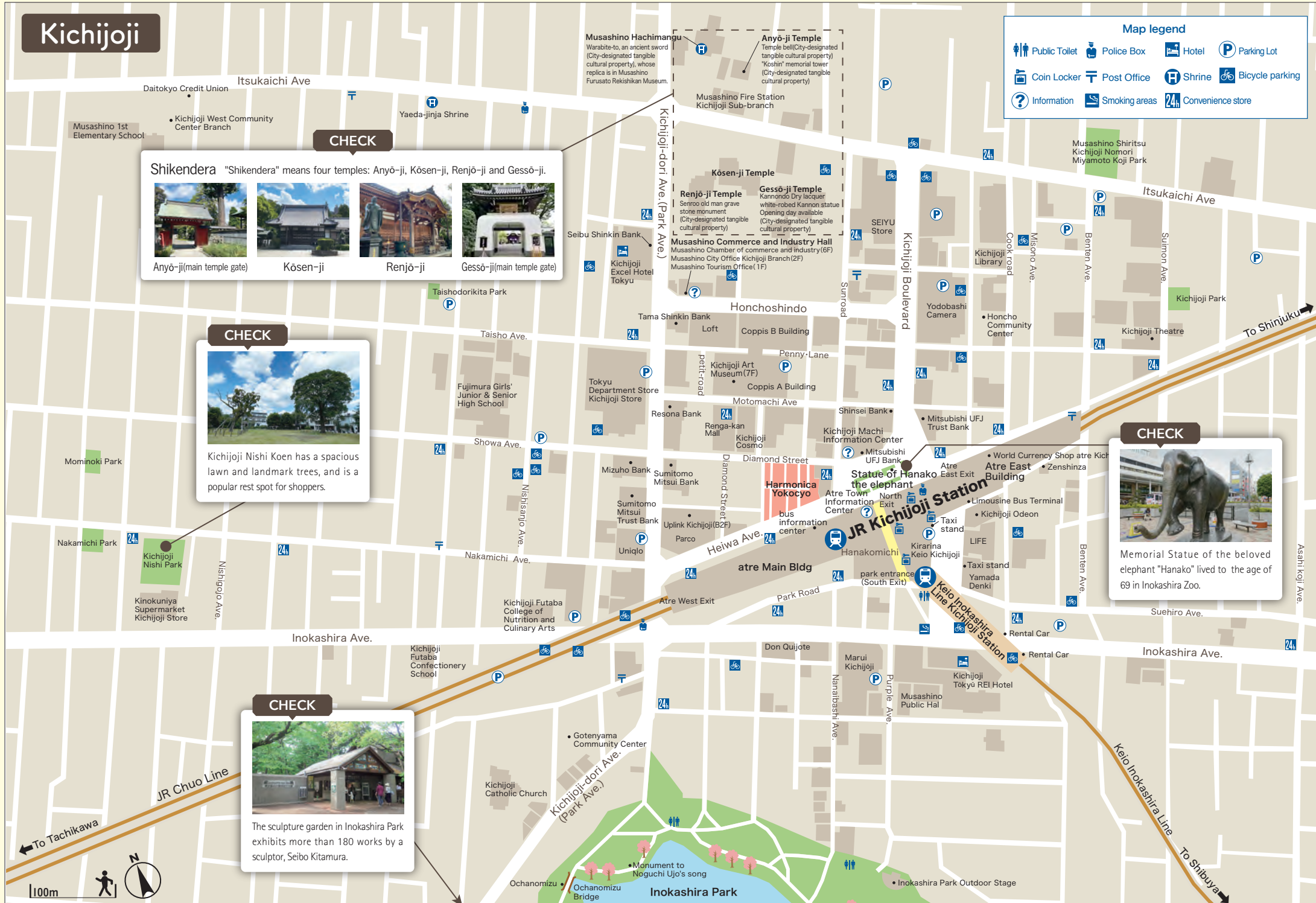
Musashino City Map

English

Published December 2024(reiwa6) vol.01
Publisher Musashino City urban tourism corp.
Photos Musashino City.
Production and Printing BUN-SHIN Co., Ltd.



Published information is as of December, 2024. Reproduction and copying of all the material on this map are prohibited.



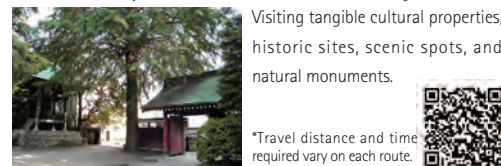
Design manhole

Various anime and manga have been created in Musashino City. You can find manhole covers designed with those manga characters in the city.

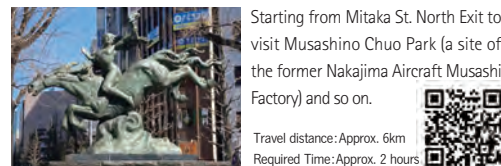


Recommendation for walking routes in Musashino. *Travel time is the required time on foot (excluding stay time). Scan the QR code on your smartphone for details.

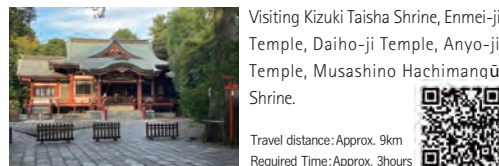
Route for Touring around Cultural Properties in Musashino City.



Route for Touring War Ruins for Peace.



Route for Touring Musashino-Kichijoji Seven Gods of Fortune.



Welcome!

Welcome to Musashino City

Here are three unique areas.

Kichijoji

Fashionable town with a variety of aspects.



North Exit of Kichijoji Station crowded every day

Kichijoji is a popular town with diverse elements: fashion, fine food, culture, nature and so on. Around the station, there are multiple shopping facilities, variety stores, distinctive eateries, jazz cafes, live music clubs an so on. At the same time, many creators and production studios of anime, manga and subculture have their bases here, and is known as a birth place of them.



Harmonica yokocho



Nanabashi Ave



Kichijoji Autumn Festival

A variety of events are held here all year round.

Mitaka North Area

An area rich in nature and good for a walk.

The north side of Mitaka Sta. is rich in nature. There are Musashino Chuo Park, Tamagawa Josui Canal and fine places for strolling. It also has many administrative offices and cultural and sports facilities. Before and during the war, there was once a leading company in Japan, Nakajima Aircraft Musashi Factory.



Cherry blossom trees around Musashino City Hall



Green Park Walkway



Musashino Chuo Park

Musashisakai

Evolving town for families and students.

Musashisakai is a convenient place to live in. There are lot of commercial facilities around the station. "Nonomichi Sakai" under the overhead railway has cafes, a nursery school, clinics and so on, for people of all ages. This area also has universities and cultural facilities where academic and cultural activities are taking place.



Many commercial facilities are in and around Musashisakai Sta.



Nonomichi Sakai



Kizuki Shrine

Musashino City Map



Musashino City is rich in water and greenery. And it is one of the most flourishing areas in Tokyo.
Many attractive tourist spots are in and around the city, too.



※Information is current as of December 2024. Please refer to each website for details.

1 Inokashira Park



This metropolitan park straddles Musashino City and Mitaka City. Surrounded by houses and busy streets, it is a place many people visit to take a walk all the year. There are various spots to see: Inokashira Pond, Inokashira Benzaiten, the coppice in Goten-yama.



1-18-31 Gotenyama, Musashino-shi Closed Always open
Open All year round ☎ 0422-47-6900

10 minutes on foot from Kichijoji Station

7 Koganei Park



The park covers about 80 hectares, having the wide grass-land, the coppice, the playground "Wanpaku Hiroba", the cycling course, the BBQ area, the open-air museum "Edo-Tokyo Tatemono-en". In spring, this park is a popular spot for cherry blossom viewing.



1-13-1 Sekino-cho, Koganei-shi Open All year round
☎ 042-385-5611

8 minutes by bus from Musashisakai Station

8 National Astronomical Observatory of Japan



This institution is at the core of astronomical research in Japan. A part of its area is open to the public, and people can join a tour around its historical buildings and observing devices. Applying in advance, you can take part in a star gazing party and/or a screening at the 4D2U Dome Theatre.



2-21-1 Osawa, Mitaka-shi Hours 10:00-17:00 (Admission until 16:30)
Closed 12/28-1-4 ☎ 0422-34-3600

13 minutes by bus from Musashisakai Station

9 Zempukuji Park



Zempukuji-Pond occupies half of the park. And it is known as one of the three major springs in Musashino area. During Edo period, the pond was used as an auxiliary water source for the Kanda Jyosui Water-works. Now visitors come to watch waterfowls flying to the pond.



2-3 Zempukuji, Suginami-ku Open All year round
☎ 03-3396-0825

14 minutes by bus from Kichijoji Station

10 Ghibli Museum, Mitaka



This mysterious building designed by Director Hayao Miyazaki has no set routes to follow. Enjoy browsing around the spots: the animation studio-like rooms, the theater for their original short film and the robot soldier on the rooftop garden. The Cat Bus is only for children of age 12 and under.



1-1-83 Shimomemaku, Mitaka-shi Hours 10:00-18:00 (By appointment only with date and time specified) Closed Tuesday *Other Closed for long periods of time
☎ 0570-055777

5 minutes by bus from Mitaka Station

11 Jindai Botanical Gardens



The park is divided into 30 blocks according to the type of plants, such as rose garden, azalea garden, and plum garden. Visitors can learn about plants while admiring the scenery. The large greenhouse with rare tropical plants is also worth seeing.



5-31-10 Jindaiji Motomachi, Chofu-shi Hours 9:30-17:00
Monday (If it is a national holiday, the park is open and closed the following day.), Closed 12/29-1/1 ☎ 042-483-2300

25 minutes by bus from Mitaka Station

12 Jindaiji Temple



This is the second oldest temple in Tokyo next to Senso-ji Temple in Asakusa, and is believed to have the power of matchmaking and warding off evil. "Shaka Nyorai-zo (statue)", the oldest national treasure buddha in Eastern Japan, is enshrined here. There are many "Jindaiji soba (local specialty)" shops and teahouses in front of the temple.



5-15-1 Jindaiji Motomachi, Chofu-shi Hours 9:00-17:00
Open All year round ☎ 042-486-5511

20 minutes by bus from Mitaka Station

2 Inokashira Park Zoo



This Zoo and Aquatic Life Park are in a part of Inokashira Park. It keeps about 160 species of animals mostly living in Japan and is breeding rare animals, too. There are also Mini Amusement Park, Sculpture Museum exhibiting Seibo Kitamura's works.



1-17-6 Gotenyama, Musashino-shi Hours 9:30-17:00 (Admission until 16:00)
Closed Monday (If it is a national holiday, the park is open and closed the following day.)
☎ 0422-46-1100

10 minutes on foot from Kichijoji Station

3 Harmonika yokocho

In front of Kichijoji Sta. North Exit, you will find narrow allies where small shops and eateries are crowded. You may feel like traveling into the Showa era (1970-1980CE) all through the day.



1 Kichijoji Honcho, Musashino-shi
※Store hours vary from store to store.

1 minutes on foot from Kichijoji Station

4 Musashino Chuo Park



This area was used as a military factory before and during the war, and as US military residential area after the war. Then, with residents' longtime request, it turned to a park. People enjoy all kinds of outdoor recreation in "Harappa (open area)" and sports field.



2-4-22 Hachiman-cho, Musashino-shi
Open All year round ☎ 0422-54-1884

8 minutes by bus from Mitaka Station

5 Musashino Place



This complex facility has four functions: being a library and supporting lifelong education, activities for the citizens and the youth. This cozy and photogenic place with a cafe received the Architectural Institute of Japan Prize in June, 2016.



2-3-18 Kyonan-cho, Musashino-shi, Hours 9:30 ~ 22:00
Closed Wednesday (If it is a national holiday, the museum will be open and closed the following day), the New Year's holiday
☎ 0422-30-1905

1 minutes on foot from Musashisakai Station

6 Musashino Furusato History Museum

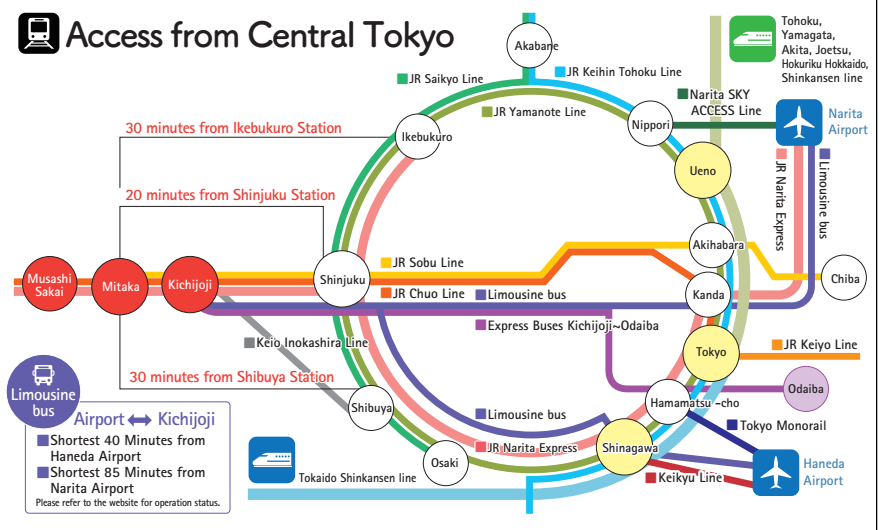
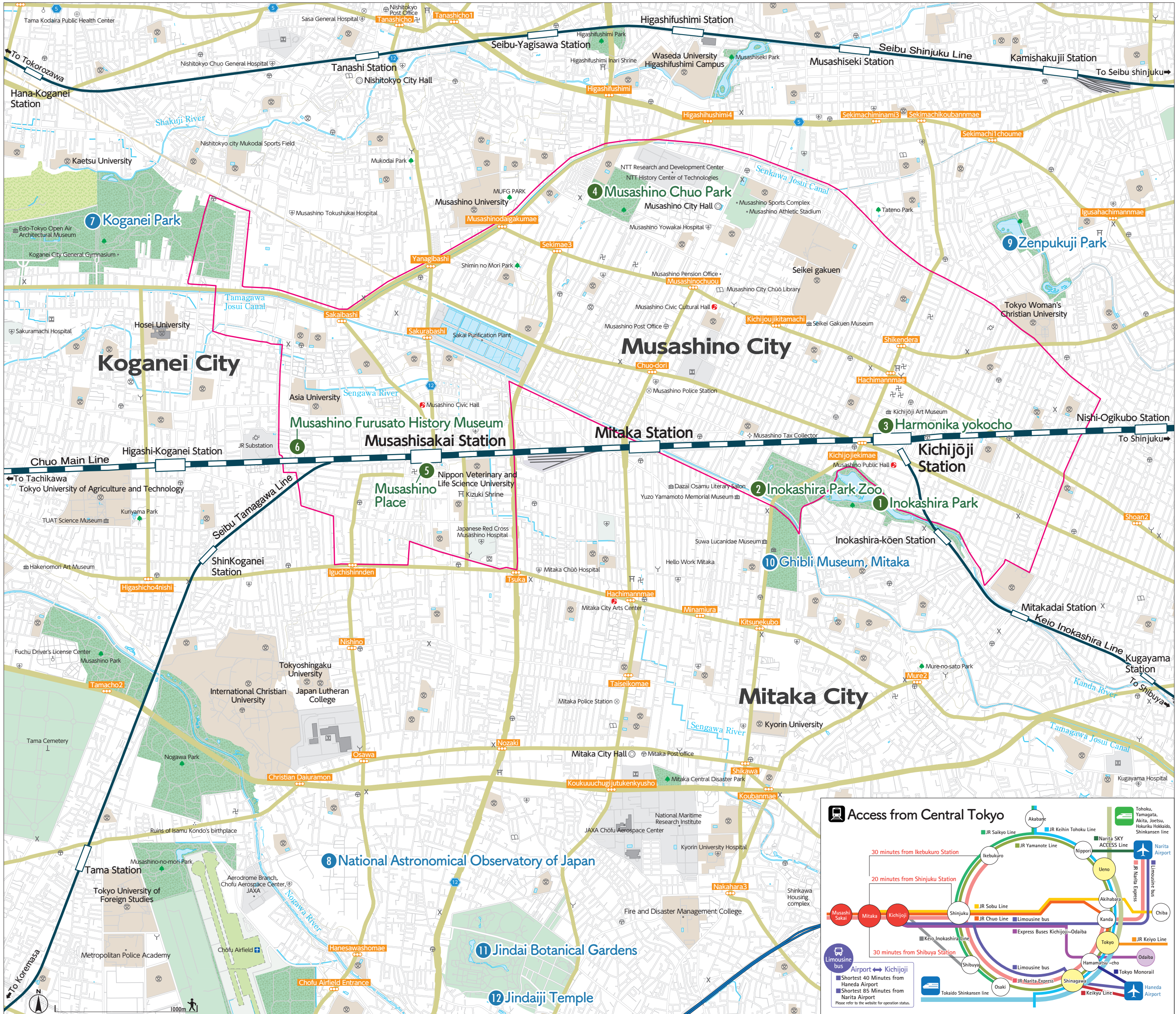


You can learn about the history and culture of Musashino area here. They permanently exhibit valuable materials, and hold various periodical exhibitions. <Admission free>



5-15-5 Sakai, Musashino-shi Hours 9:30 ~ 17:00
Closed Fridays and holidays (special arrangement day)
☎ 0422-53-1811

12 minutes on foot from Musashisakai Station



Kichijoji Station

Bus stop	Route	Destination
North	1 Kich 73	Mukodaicho5 - chome
	Kich 75	V.GARDEN Nishitokyo
	Kich 53	Yagisawa station
	2 War 01	Dalba-Ariake garden
	War 02	Yokohama-Hakkeijima Sea Paradise
	Nish 10	Nishi-Ogikubo station
	3 Kich 81	Kami-Shakujii station
	4 Kich 61etc.	Tokyo Disney Resort (code-sharing) (Kanto-Seibu-Keisei-KeiseiTransit)
	5 Kich 61etc.	Tomin-Noen Seikonic-Musashi-Seiki station inguchi-Osumi-gakuen station etc.
	6 Naka 36	Hoya station South Exit etc.
South	7 Kich 60etc.	Shakujii-koen station North Exit-Kamishakujii station etc.
	8 Kich 64-66	Hana-Koganei station (Tanashi station inguchi)-Hoya station South Exit (Musashisakai station inguchi)
	10 --	Haneda Airport (Haneda Airport) (code-sharing) (Keiyo-Odakyu-Kanto-Airport limousine Bus)
	4 Kich 06	Chofu Station North Exit
	Kich 04	Chofu Station North Exit etc.
	Kich 05	Chofu Station North Exit etc.
	8 Kich 14	Chofu Station North Exit



Mitaka Station

Bus stop	Route	Destination
North	1 Taka 01.02.03	Kitaura - Miashiro-seki station Tanashi Hashiba
	2 Taka 13	Yagisawa station
	3 Taka 30 - 33	Musashisakai station - Musashikoganei station
	4 Taka 21 - 22	Tenjinryama - Hibiya station
	2 Taka 56	Chofu Station North Exit
South	3 Taka 65	In front of Jindai Botanical Garden - Jindai Temple
	4 Taka 51 - 58	Chofu Station North Exit
	8 Taka 50	Chofu Airfield
	9 Mitaka	Mitaka City Bus



Musashisakai Station

Bus stop	Route	Destination
North	1 Sakai 03	Hibiya station
	Sakai 05	Hibiya station
	2 Sakai 04	Hibiya station
	3 Taka 30	Mitaka station
	4 Sakai 16	Hana-Koganei station South Exit
South	5 Sakai 12	Mukodaicho5 - chome
	3 Sakai 19	Chofu Station North Exit - Komae Station North Exit etc.

