

KOTO CITY Travel Guide

Free

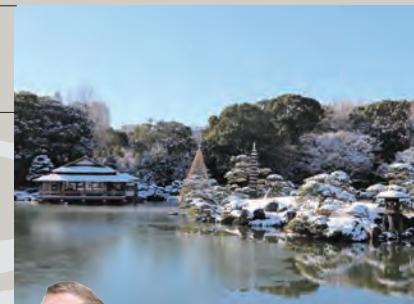


Exciting Experiences !



Seasonal Scenery

Koto City is the perfect place to experience all of Japan's unique four seasons, including cherry blossoms in spring, flowers year-round, new greenery, autumn foliage, and even snow.



Kiri

I love cherry blossom viewing in springtime. There are similar flowers in my home country, but they're white, and the pink blossoms in Japan are gorgeous.



Koto, a City Full of Charm

You may have heard of Koto, but do you know what it's really like? A trip to this wonderful city is like opening a box of toys, where you'll find scenic river and oceanside areas, beautiful plants and flowers, the downtown area where you can see the vestiges of old Tokyo, and cutting-edge leisure spots. Read on to learn more about this exciting city from residents that come from all around the world.



Koto City Tourism Association official site

© Blue Bottle Coffee Japan



Food

Koto City is home to some distinctive dishes you won't find anywhere else, including sushi made with fresh fish and the famous local dish Fukagawa-meshi, inexpensive but delicious everyday food, as well as unique coffee and sweets.



I lived in a rural area in my home country, so I love being able to eat lots of seafood from Toyosu Market.



Josh



Culture

In Koto City, you can experience many different aspects of Japanese culture, including visits to old, historic shrines and temples, traditional festivals, trying on kimonos, and town scenery where you can see the vestiges of old Edo* in the canals.

*Edo is the old name for Tokyo, and the Edo period lasted from 1603 to 1867.



Make sure to be respectful when visiting a shrine. Follow the rules for praying and how to behave and you'll have a great experience.

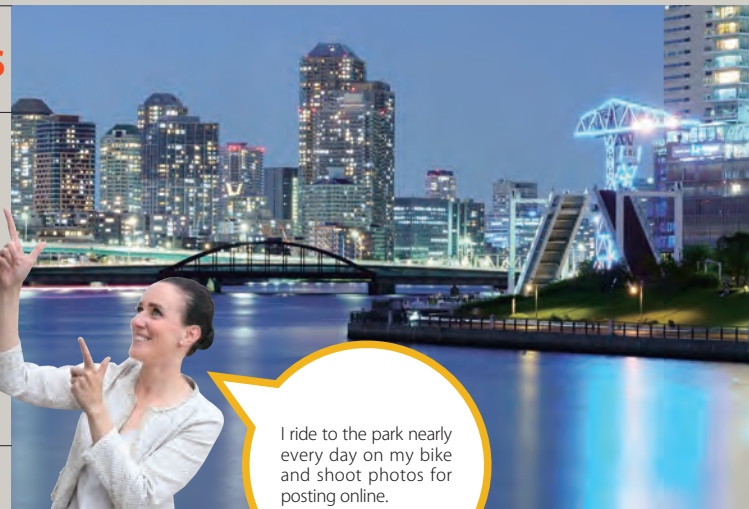
Aisulu



Gorgeous Photo Spots

With sparkling high-rise apartment buildings at night, panoramic views by the water, an immersive art museum, and plenty of parks, Koto City is the perfect place to snap some beautiful photos.

teamLab Planets TOKYO DMM, Toyosu, Tokyo © teamLab



I ride to the park nearly every day on my bike and shoot photos for posting online.

Terry

Shopping

Koto City is filled with shopping options including large malls, uncommon retro shopping streets, showrooms featuring traditional crafts, and more.



I bought some character themed goods at the mall as souvenirs for my family. There are so many it's hard to choose!

Lolita



Exciting Experiences 1

Enjoy the Best of Japan – Food and Hot Springs

At Toyosu Market, you'll find a variety of fresh foods from around Japan and the globe. A popular new spot opened just next door in 2024 and is the perfect place to enjoy Japanese cuisine and hot springs.

MAP
↓
P14-15

All the wonderful flavors of Japan

Toyosu Senkyaku Banrai

Designed to look like a street from Edo period Japan, this area is lined with nearly 70 food shops and eateries. Thanks to its location right next to Toyosu Market, you can enjoy the tastiest foods available. With everything from fresh-cooked skewers to sweets, you can munch while walking around or sit down and enjoy a meal at the food court or restaurants.

DATA
6-5-1 Toyosu / Open 365 days a year / Free entry /
4 minutes on foot from Shijo-mae Station on the
Yurikamome Line MAP 1



It's like we've traveled back in time to the Edo period! I've never had anything like this omelet and chicken skewer, it's delicious!



Gobble down an omelet and chicken skewer from Marutake Premium for ¥700 or try some Toyosu seafood senbei from Edo Fukagawayaya for ¥800!

Try these!



Japanese-style omelet shop
- Marutake Premium



Edo-style sushi
- Tsukiji Kagura Sushi



Izakaya and Japanese food
- Edo Fukagawayaya

Great souvenirs!



Souvenirs and Japanese sundries
- Toyosu Engimono

The Scenic Ashiyu Foot Bath Garden offers 360-degree panoramic views of Toyosu.

Soaking your feet while taking in the view of the city is so relaxing!

Enjoy hot springs in the city

Tokyo Toyosu Manyo Club

This hot spring facility is perfect for casual day trips or leisurely overnight stays. Hot spring water known for helping alleviate fatigue and autonomic nerve regulation is trucked in from Hakone Yumoto and Yugawara. Come here to warm up your travel-weary feet in the foot baths or relax and soak your entire body in a tub.

DATA
6-5-1 Toyosu / Open 365 days a year / Day-trip hot spring bathing: ¥3,850 adults, ¥2,000 elementary school students, ¥1,400 children from 3 years old to preschool age, children under 3 free of charge (Additional bathing tax required for bathers aged 12 and up) / 4 minutes on foot from Shijo-mae Station on the Yurikamome Line MAP [2](#)



Special room with attached hot spring: ¥113,000 and up for 2 adults

*Fees differ depending on the day and room type. Includes admission fee and breakfast buffet. Additional bathing tax and accommodation tax required.



Open-air bath (shown in photo), large public bath, lie-down baths, carbonated springs, and family baths also available.

The amazing tuna auction is a must-see!

Toyosu Market

Toyosu is the main food market for the Tokyo metropolitan area. Here, seafood, fruits, and vegetables from across the country and the world are bought and sold. Visitors can tour the market, eat at restaurants, and shop at various specialty stores. One thing you can't miss is the tuna auction which begins at 5:30 in the morning! Witness this intense bidding war where buyers flash hand signs, instantly settling on a price.

DATA
6 Toyosu / No fixed holidays / Free entry / Connected to Shijo-mae Station on the Yurikamome Line MAP [3](#)



Photo: Metropolitan Central Wholesale Market



Directions to tuna auction: Follow the observer route to Fisheries Wholesale Market Building in Block 7 or go to the observation deck (reservations required).



Assorted products and ukiyo-e prints - Ippinya Edoko

Exciting Experiences 2

A Mellow Walk Through Fukagawa in a Kimono

While visiting Japan, make sure to try on a kimono and take a stroll through the old downtown area. If you need a break while enjoying the town scenery, stop by one of the classy cafes dotting the area.

MAP
↓
P14-15

Wearing a kimono feels great, and the belt helps your posture!

Patterned, washable kimono rental: ¥4,400 and up, same day return.

Kimono rental and fitting

Tamaki Store Fukagawa Shirakawa Main Store

This historic kimono fabric shop opened in 1924. In addition to kimono and yukata, they also offer a wide selection of Japanese sundries and fabric accessories. There is also a convenient currency exchange machine in the shop that can be used to exchange 14 currencies including dollars and euros to yen. You can rent a kimono here which will be fitted for a casual walk around town.



Hakama-style babies' clothes (shown above) ¥1,698 and up, hakama for cats and dogs (bottom left), ¥1,980 and up.



DATA

2-13-3 Miyoshi / Closed Wednesdays, special holidays / 5 minutes on foot from Kiyosumi-shirakawa Station Exit A3 / 1 minute from Exit B2 on the Toei Oedo Line / Tokyo Metro Hanzomon Line MAP 4



Enjoy the beauty of a traditional Japanese garden!

Kiyosumi Gardens

This garden was opened as a landscaping project by Yataro Iwasaki, an entrepreneur active in the latter half of the nineteenth century, and later completed over the course of three generations. In the garden there is a large pond with three islands in the center ringed by a collection of famous stones from across Japan. Different birds and seasonal flowers can be seen in the park throughout the year.

DATA

3-3-9 Kiyosumi / Closed for year-end / New Year holidays / General admission ¥150, elementary school students and under, junior high school students living in or attending school in the metro Tokyo area free of charge, 65 years and over ¥70 / 3 minutes on foot from Kiyosumi-shirakawa Station Exit A3 on the Toei Oedo Line / Tokyo Metro Hanzomon Line MAP 5





Everything is so realistic, from the recreation of the Edo period buildings to the carrots and the giant radishes!

Amazing, life-sized Edo town scenery Fukagawa Edo Museum

This museum features a life-sized recreation of Fukagawa Sagacho from around 1840. Sound effects and lighting add to the realism, with roosters crowing, sudden evening showers, and the time of day changing from morning to night. If you see some unfamiliar old-fashioned tools, ask one of the volunteer guides what they are. Some guides even speak English (Volunteer guides are not always available).



Rowhouses where townsfolk lived. Make sure to take your shoes off when going inside the houses.



A street stall that sells tempura. Feel free to pick up a tempura sample and take a photo!

Fertilizer, vegetable, and rice shops on the main street.

DATA
1-3-28 Shirakawa / Closed 2nd and 4th Mondays of the month, special holidays / Adults ¥400, elementary, junior, and senior high school students etc. ¥50 / 3 minutes on foot from Kiyosumi-shirakawa Station Exit A3 on the Toei Oedo Line / Tokyo Metro Hanzomon Line MAP 6



Enjoy a break with a fresh cup from a barista

BLUE BOTTLE COFFEE KIYOSUMI SHIRAKAWA FLAGSHIP CAFE

This is one of the leading cafes in the coffee haven of Kiyosumi-shirakawa, known for its roasteries and cafes. Select coffee varieties are roasted in Blue Bottle Coffee's very own roastery. Expert baristas serve drip coffee brewed carefully one cup at a time. Don't forget to check out the sweets menu you'll only find here!

photo Takumi Ota



DATA
1-4-8 Hirano / Open 365 days a year / 8 minutes on foot from Kiyosumi-shirakawa Station Exit A3 on the Toei Oedo Line / Tokyo Metro Hanzomon Line MAP 7

Cold Brew (shown above) ¥634 (for eat-in), Seasonal Tart (below) for eat-in only (Tarts differ depending on the season, rhubarb shown in photo).

A dish that began as a fisherman's meal Fukagawa-meshi

This local dish began in the Edo period as a Fukagawa fisherman's meal made with famous local shellfish. Fukagawa-meshi has evolved over the years with each restaurant offering their own creative versions from bukkake, which features short-necked clam soup flavored with miso or soy sauce over rice, and a one-pot rice dish with short-necked clams.



Bukkake



One-pot rice dish

Exciting Experiences 3

A Shrine of Flowers, Japanese Sweets, and Downtown Foods

After a quiet visit to a historic shrine where beautiful flowers color the grounds, savor some famous sweets and delicious everyday food!

MAP
↓
P14-15

Over 50 wisteria plants can be found around the shrine. During the Wisteria Festival, the grounds are illuminated at nighttime.

Over 300 red and white plum blossom trees herald the coming of spring. Michizane loved plum blossoms and composed many Japanese poems dedicated to this flower.



I never get tired of visiting this shrine. Each time I see seasonal flowers that make it look different!

A flower-filled shrine to the god of learning Kameido Tenjin Shrine

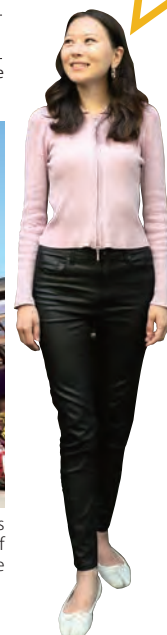
This shrine is dedicated to Sugawara no Michizane, a scholar who lived during the late ninth century and was later deified as a god of learning. The grounds are home to shrine buildings, a pond, arched bridges, the statue of an ox that is said to cure illnesses if touched, and nearly 100 stone monuments. Kameido Tenjin Shrine is famous for its many flowers, including Michizane's beloved plum blossoms, wisteria, and chrysanthemums.

Flower	Season	Peak time (approximate)
Plum Festival	Early February – early March	Around mid-February
Wisteria Festival	Mid to late April	Around mid-April
Chrysanthemum Festival	Late October – mid-November	Around early November

*Note that peak flower viewing times are merely estimates. They may change significantly depending on the weather and other factors.



Michizane also loved composing poems about chrysanthemums. Various sizes of chrysanthemums can be found around the shrine grounds.



DATA
3-6-1 Kameido / 15 minutes on foot from the North Exit of Kameido Station on the JR Sobu Line/Tobu Kameido Line MAP 8

Treat yourself to some Japanese sweets
Funabashiya Kameido
Tenjin Shrine Main Shop

This historic kuzumochi shop was founded in 1805. Since the Edo period, they have crafted traditional Japanese sweets with zero additives or preservatives. Artisans make kuzumochi one piece at a time at the adjacent kitchen. In addition to their specialty of kuzumochi, they also make anmitsu, tokoroten, oshiruko, and other tasty traditional treats.



Kuzumochi and anmitsu are available for takeout.



The kuzumochi and anmitsu are so delectably sweet and delicious! They are both delicate and rich in flavor.

DATA
 3-2-14 Kameido / Open 365 days a year / 10 minutes on foot from the North Exit of Kameido Station on the JR Sobu Line/Tobu Kameido Line
MAP [9]



Kuzumochi

This traditional sweet is made by steaming wheat starch that is fermented for 450 days. It is served with a topping of soybean powder and brown sugar syrup. At only about 200 calories per serving, it is a great low calorie treat (¥790 when eaten in the shop).



Anmitsu

Sweet bean paste, gyūhi rice cake, red peas, and other toppings are served on Japanese gelatin with brown sugar syrup. Funabashiya's anmitsu is a rare variety that contains kuzumochi (¥800 when eaten in the shop).



Gyoza and grilled offal
Local Food in Kameido

Kameido is a great spot with old-fashioned charm and tasty inexpensive food such as gyoza packed with veggies, wonderfully chewy char-grilled offal, and more. Don't be discouraged by the long lines at the popular restaurants, their famous dishes are well worth the wait!



Kameido gyoza

Peek in restaurants or munch while on the go
Sunamachi Ginza
Shopping Street

This historic shopping street has been around since 1932. Stretching over nearly 670 meters, this lively area is home to about 180 shops. You'll find everything from clothing to daily necessities and foods. Grab some prepared foods or sweets and eat while you enjoy a stroll. A special market is held every month on the 10th where you can find lots of items on sale.



DATA
 Kitasuna 3 - 5-chome / Close to the Kitasuna 2-chome stop on Toei Bus No. 07 **MAP** [10]

A Traditional Place of Prayer

MAP
↓
P14-15



Naritasan Fukagawa Fudo-do

This is the Tokyo branch of the ancient Naritasan Shinshoji Temple in Chiba. The principal deity, Fudo-myoo, is known for granting the wishes of worshippers. Five times a day, the Goma Rite is held, a Buddhist ritual that worshippers can participate in. Don't miss the chance to make a wish, but make sure to mind your manners.

During the Goma Rite, worldly desires are burned in the fire of Fudo-myoo's wisdom in a ritual that is said to grant wishes. The 30-minute ritual is held five times a day at 9:00 A.M., 11:00 A.M., 1:00 P.M., 3:00 P.M., and 5:00 P.M.



DATA
1-17-13 Tomioka / 2 minutes on foot from Monzen-nakacho Station Exit 1 on the Tokyo Metro Tozai Line MAP11

Temple Manners

- No photos or videos
- No eating or drinking on temple grounds
- Please remove your hat inside the hall
- Don't stretch or cross your legs when sitting in front of the Buddha
- Please keep quiet, this is a place of worship
- Please stay seated during the Goma Rite
- No tank tops, shorts, or other revealing clothing

Please use yen for donations!



Edo Kiriko

Edo Kiriko is a glass cutting art that began around the end of the Edo period and is designated as a traditional craft by the Japanese government. Each piece is painstakingly crafted by hand by nearly 100 artisans that have handed down the techniques over the generations, mainly in Koto City. These unique pieces feature ancient Japanese patterns cut deeply into vividly colored glass, making them perfect for brightening your dinner table.



© TCVB

Cool Koto

MAP
↓
P14-15

From traditional crafts to a trip on a Japanese boat, cutting-edge art, anime, cosplay and other events at Tokyo Big Sight, Cool Koto has everything you could want!



DATA
2-40-5 Ojima (Edo Kiriko Cooperative Association Showroom) / Closed Mondays (Closed Tuesday when Monday falls on a holiday) / 3 minutes on foot from Nishi-ojima Station Exit A2 on the Toei Shinjuku Line MAP12

Traditional Japanese Boating

Visitors to Yokojikkengawa River Water Park can enjoy a ride on a rare traditional wooden Japanese boat. You can even take the oar and paddle if you'd like! The tours are operated by Japanese Traditional Wooden Boat Association, a group of volunteers that hand down traditional Japanese boat piloting skills. Kick back and enjoy a peaceful trip on the water while you take in the view of the park and the birds that roost there.

DATA
Around 8-4 Umibe(In Yokojikkengawa River Water Park) / Visit the website for the boat service timetable / Free of charge / 20 minutes on foot from Toyochi Station Exit 4 on the Tokyo Metro Tozai Line MAP14



Tokyo Big Sight

Consisting of 16 exhibition halls and 24 conference rooms, Tokyo Big Sight boasts the largest exhibition space in the country. It hosts nearly 300 events annually, from manga fanzine exhibitions and on-the-spot sales combined with cosplay events, to jewelry festivals, antique fairs, projection mapping, and more.

DATA
3-11-1 Ariake / 3 minutes on foot from Tokyo Big Sight Station Exit 2B on the Yurikamome Line MAP13



teamLab, Floating Flower Garden: Flowers and I are of the Same Root, the Garden and I are One © teamLab

teamLab Planets TOKYO DMM

This innovative spot consists of four massive spaces that include a museum where you walk through water and two gardens where you become one with the flowers. After taking your shoes off, immerse yourself in the dreamlike works of art on display. Some exhibits differ during the day and after sunset. This limited time art show is available until the end of 2027.

DATA
6-1-16 Toyosu / No fixed holidays / ¥3,800 adults, ¥2,800 junior and senior high school students, ¥1,500 children, kids 3 and under free of charge (Prices differ depending on the day and season) / 1 minute on foot from Shin-toyosu Station on the Yurikamome Line MAP15



The Seasons of Koto

There are a variety of events and seasonal flowers and plants that can be enjoyed throughout the year in Koto City. Come for a stroll and experience the changing seasons and traditional culture firsthand.

MAP
↓
P14-15

Usokae Shinji

Usokae Ritual

Visitors to the shrine can purchase wooden amulets carved to look like uso, a bird that is said to bring happiness.

Kameido Tenjin Shrine MAP 8



Setsubunsai

Setsubun Festival

Also known as the bean throwing festival, beans imbued with the power of the gods are thrown as part of a ritual to drive away evil spirits and bring good health to one's home. If you get some, you'll have good luck!

Tomioka Hachimangu Shrine MAP 16



2 Feb. Setsubunsai
(Tomioka Hachimangu Shrine/Kameido Tenjin Shrine)
Fukagawa Hanachozu in winter (Monzen-nakacho)

1 Jan. Usokae Shinji
(Kameido Tenjin Shrine)

Fukagawa Hachiman Matsuri

Fukagawa Hachiman Festival

During this festival, parishioners of Tomioka Hachimangu Shrine carry portable shrines through the streets. Because the persons carrying the shrine are sprayed with water, it is also known as the water throwing festival.

Tomioka Hachimangu Shrine MAP 16

Oedo Fukagawa Sakura Matsuri

Oedo Fukagawa Cherry Blossom Festival

The cherry blossom-lined riverside is truly gorgeous here. Ride a traditional Japanese boat and see the cherry blossoms up close as branches reach down to the river.

Near Kurofune Bridge and other areas MAP 17



5 May. Kachiyasai
(Katori Shrine) MAP 21

3~4 Mar.~Apr. Tokyo Marathon
Oedo Fukagawa Sakura Matsuri (Kurofune Bridge)





Fukagawa Hanachozu

Fukagawa Floating Flower (autumn and winter)

Vividly colored flowers are placed in the troughs for purifying one's hands at shrines and temples. Flower-filled vases are placed in front of stores, mainly in Monzen-nakacho.

12
Dec.

Osame Fudo (Fukagawa Fudo-do)

11
Nov.

Koto Wangan Matsuri (Toyosu Park)
Fukagawa Tori no Ichi (Tomioka Hachimangu Shrine)

Fukagawa Tori no Ichi Fukagawa Tori no Ichi Festival

Visitors can buy a lucky rake here.
Tomioka Hachimangu Shrine MAP16

9~10
Sep.~Oct.

Kodomo Bisha (Koto Tenso Shrine)
Koto City Community Festival
(Kiba Park, other areas) MAP22
Kakashi Concours
(Fukagawa Shiryokan-dori Shopping Street)
Fukagawa Hanachozu in autumn (Monzen-nakacho)

8
Aug.

Fukagawa Hachiman Matsuri
(Tomioka Hachimangu Shrine)

Kodomo Bisha

Children's Archery Ritual

Children dressed in traditional costume shoot arrows in hopes of bringing peace to the area and good health to themselves.

Koto Tenso Shrine MAP18



Koto Wangan Matsuri

Koto Bayside Festival

This festival features stage performances, and booths selling local dishes and specialties. There are also special cruises touring the bay area.

In front of Urban dock LaPort TOYOSU/Toyosu Park MAP20



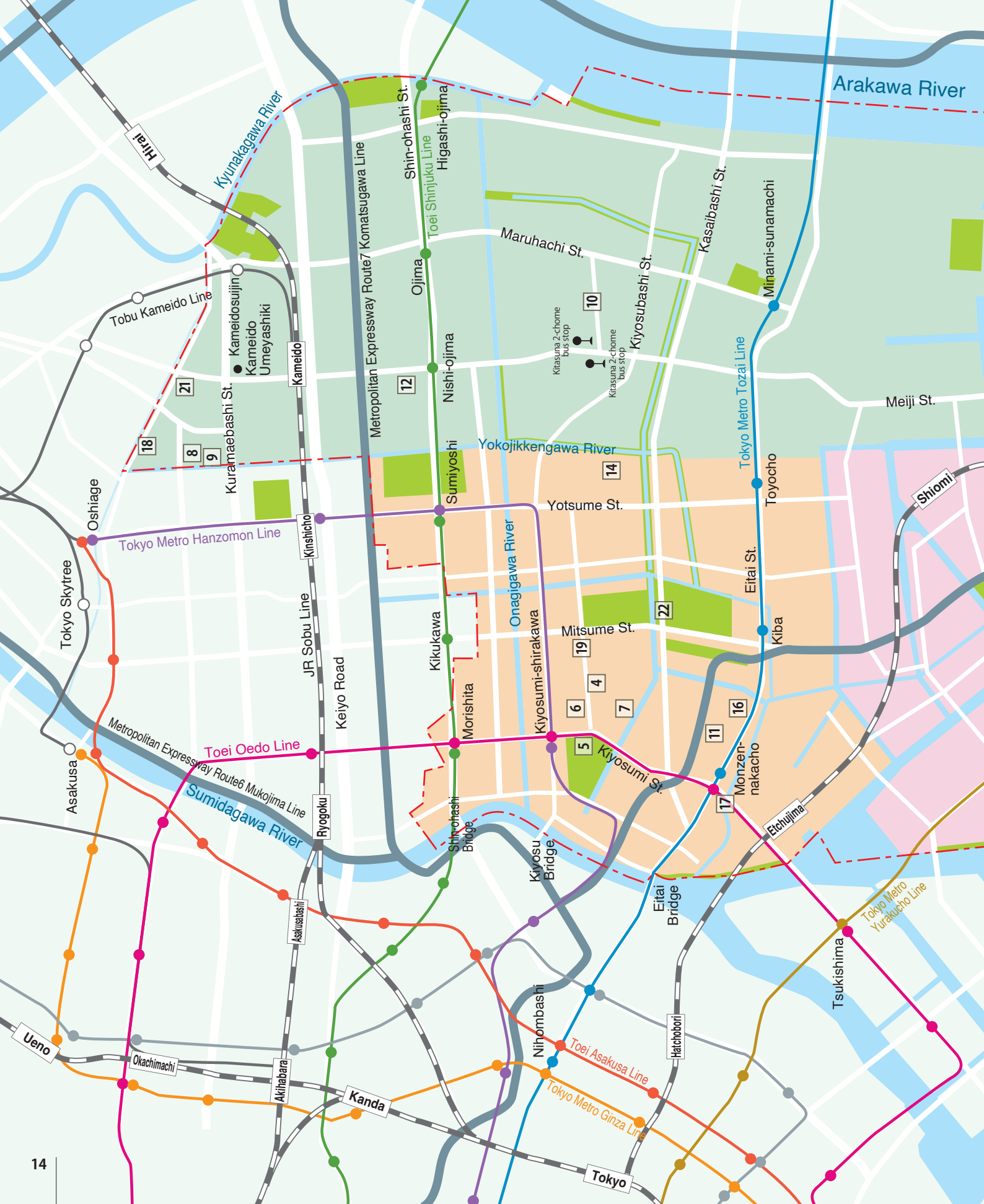
Kakashi Concours

Scarecrow Competition

More than 150 unique scarecrows line the 800-meter street during this competition.

Fukagawa Shiryokan-dori Shopping Street MAP19



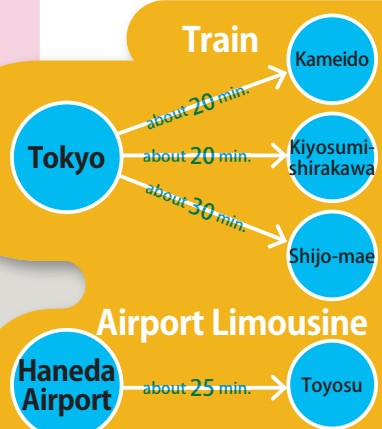
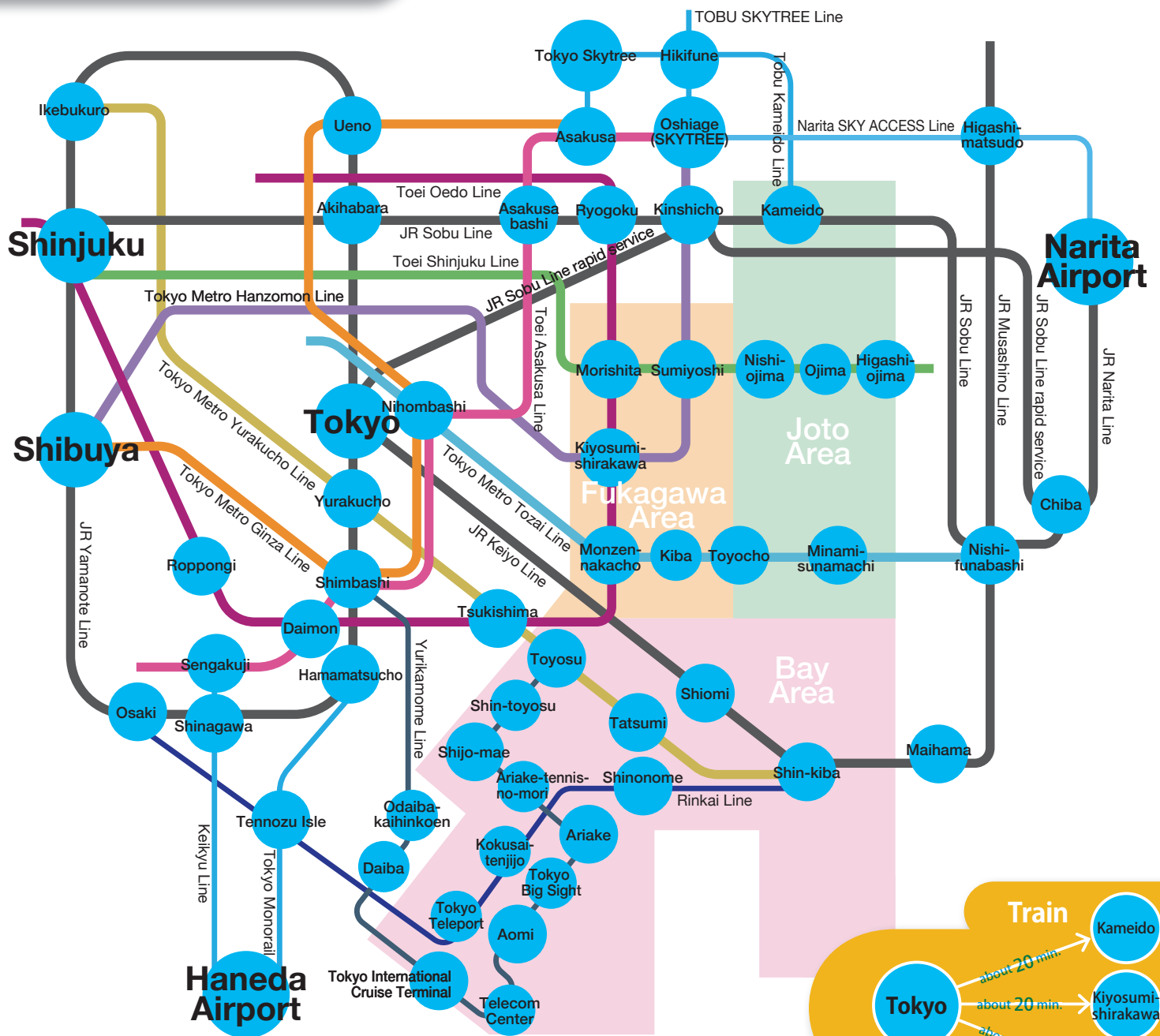




Koto Sightseeing Map

- | | | |
|----|---|---------------|
| 1 | Toyosu Senkyaku Banrai | Fukagawa Area |
| 2 | Tokyo Toyosu Manyo Club | Fukagawa Area |
| 3 | Toyosu Market | Fukagawa Area |
| 4 | Tamaki Store Fukagawa Shirakawa Main Store | Fukagawa Area |
| 5 | Kiyosumi Gardens | Joto Area |
| 6 | Fukagawa Edo Museum | Joto Area |
| 7 | BLUE BOTTLE COFFEE KIYOSUMI SHIRAKAWA FLAGSHIP CAFE | Joto Area |
| 8 | Kameido Tenjin Shrine | Bay Area |
| 9 | Funabashiya Kameido Tenjin Shrine Main Shop | Bay Area |
| 10 | Sunamachi Ginza Shopping Street | Bay Area |
| 11 | Naritsan Fukagawa Fudo-do | Bay Area |
| 12 | Edo Kiriko Cooperative Association Showroom | Bay Area |
| 13 | Tokyo Big Sight | Bay Area |
| 14 | Yokojikkengawa River Water Park | Joto Area |
| 15 | teamLab Planets TOKYO DMM | Fukagawa Area |
| 16 | Tomioka Hachimangu Shrine | Fukagawa Area |
| 17 | Kurofune Bridge | Fukagawa Area |
| 18 | Koto Tenso Shrine | Bay Area |
| 19 | Fukagawa Shiryokan-dori Shopping Street | Bay Area |
| 20 | In front of Urban dock LaLaport TOYOSU/Toyosu Park | Bay Area |
| 21 | Katori Shrine | Bay Area |
| 22 | Kiba Park | Bay Area |

Access to KOTO CITY



KOTO CITY Travel Guide 2024.10.

Publisher/General Incorporated Association Koto City Tourism Association
Editor/ENO INC.