

Free Cultural Activities

Ota City Tourist Information Center doubles as an info hub and activity venue. All activities are free, staff-guided and quick, and require no booking. Join in on the fun as you learn about Ota City in the process!

KIMONO



Dress in kimono and have your photo taken in a traditional setting. Accessories and props such as masks, swords, and umbrellas are also provided.

CALLIGRAPHY



Try your hand at the traditional art of Japanese handwriting and learn how to write popular Kanji characters one brush stroke at a time.

ORIGAMI



Learn the styles and techniques of origami, the ancient art of paper folding, where each new crease brings your creation closer to life.

BOOKMARK MAKING



Design yourself a bookmark with washi paper cut in the shape of iconic Japanese symbols, including Mount Fuji, cherry blossoms, and kimono.

Explore Ota City

Cycle through Ota City, trace unique manholes, or get your copy of the adorable Ota City stamp book – do all this and more with support from the Ota City Tourist Information Center. Just stop by and say hello!



MANHOLE CARD

Search for Ota City's three unique manhole covers in Kamata, Omori, and Rokugo and pick up a collectible manhole card at the Ota City Tourist Information Center.



STAMP BOOK

Pick up a copy of Ota City's souvenir stamp book, which also includes useful Japanese phrases and must-see spots. Collect stamps at various locations in the city!



DOCOMO BIKE SHARE

Cycle Ota City with Docomo's Bike Share 1-day pass, available for purchase at the Ota City Tourist Information Center for 2200 yen.



Ota City Tourist Information Center

- 🕒 Year-round, Daily, 9am – 8pm
- 📍 Wing Kitchen Keikyu Kamata M2F, 4-50-11 Kamata, Tokyo
- 🚉 Keikyu Kamata Station, 10 mins from Haneda Airport
- ☎ Phone: (+81) 03-6424-7288

Ota City Guide Map



EXPLORE MORE

Scan the QR code to see more activities and experiences offered at the Ota City Tourist Information Center.

Hello! I'm Hanepyon!

Meet the friendly face of Ota City, Hanepyon! This mascot was inspired by Haneda Airport and the city's numerous cherry blossom spots and public bathhouses.



1 SAKURA COLLAR
Hanepyon's collar represents Ota's famed cherry blossom viewing areas, such as Sakura-zaka and Senzokuike.

2 AIRPLANE HAT
Hanepyon's yellow airplane hat is a nod to Haneda Airport, Tokyo's main gateway to the skies.

3 BUCKET
Hanepyon's bucket conveys Ota City's deeply-rooted public bathhouse culture and its unique hot springs.

Useful Phrases

My name is _____
Watashi no namae wa _____ desu
私の名前は _____ です

Nice to meet you!
Hajimemashite
はじめまして

Where is the train station?
Eki wa doko desu ka?
駅はどこですか？

Do you speak English?
Eigo wa hanasemasu ka?
英語は話せますか？

Is there Wi-Fi?
Wi-Fi wa arimasu ka?
Wi-Fi ありますか？

Can I have the bill, please?
Okaikei onegai shimasu
お会計お願いします

I'm sorry, I don't understand
Sumimasen, wakarimasen
すみません、わかりません

What's your name?
Onamae wa?
お名前は？

This is delicious!
Oishi desu
おいしいです

Thank you for the meal
Gochiso sama deshita
ごちそうさまでした

How much does this cost?
Kore wa ikura desu ka
これはいくらですか？

Please wait a moment
Chotto matte kudasai
ちょっとお待ちください



FOLLOW HANEPYON ON X
Scan the QR code to get updates from Hanepyon!

Diverse Experiences

Welcome to Ota City, the most vibrant neighborhood near Haneda Airport! With plenty of places to eat and cultural landmarks to see, this bustling, multicultural hub offers unique experiences for every traveler.

Kamata

A Foodie's Paradise

Kamata, the heart and soul of Ota City, is its most bustling area, day and night. It is famed for its diverse food scene that ranges from Japanese staples like ramen noodles and 'tonkatsu' pork cutlets to its signature 'hanet-suki' winged gyoza. Kamata is also home to many 'sento' public bathhouses, including several prominent 'kuroyu,' mineral-rich black water baths.



RECOMMENDED PLACES

- 1 Nihao**
4-24-14 Kamata
- 2 Tonkatsu Aoki**
5-43-7 Kamata
- 3 Kaisei-yu**
5-10-5 Nishi-Kamata

Haneda



Airport and Beyond

Haneda is a relaxed residential area only a short train ride from Haneda Airport. You'll find many prominent landmarks here, including the picturesque Anamori Inari Shrine, famous for its tunnel of red torii gates, and Haneda Shrine, where visitors pray for a safe flight. Haginaka Park's vibrant playgrounds are also popular among families with young children.

RECOMMENDED PLACES

- 4 Anamori Inari Shrine**
5-2-7 Haneda
- 5 Haneda Shrine**
3-9-12 Hon-Haneda
- 6 Sachino-yu**
1-25-15 Nishi-Kojiya
- 7 Haginaka Park**
3-26-46 Haginaka



DISCOVER MORE OPTIONS
Scan the QR code to see more recommendations for dining, sightseeing, and bathing options!

Spectacular Landmarks

Ikegami boasts many historic sites, including Ikegami Honmonji, a Buddhist temple with the oldest five-story pagoda in the Kanto region, and Ikegami Baien, a beautiful plum garden that was once the home of a renowned painter. Both spots are popular for spring flower viewing: Ikegami Honmonji for cherry blossoms and Ikegami Baien for plum blossoms.

RECOMMENDED PLACES

- 8 Ikegami Honmonji Temple**
1-1-1 Ikegami
- 9 Ikegami Baien**
2-2-13 Ikegami

Senzokuike



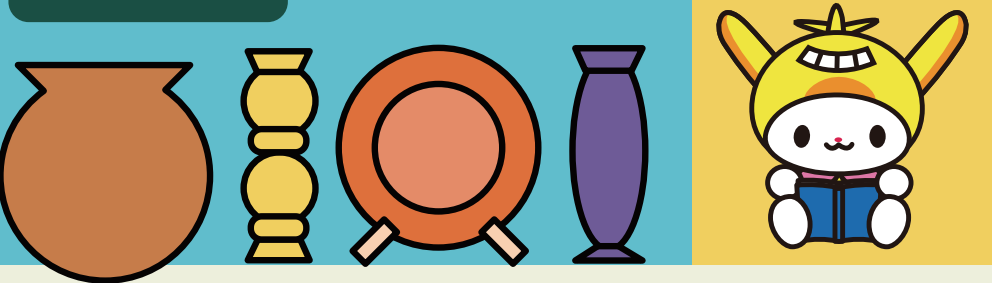
Sights and Scents

The Senzokuike area, with its signature pond and natural sites, is an outdoor hotspot with year-round activities, including cherry blossom viewing, paddle boat riding, and bird-watching. Nearby also lies the resting place of Katsu Kaishu (1823-1899), an eminent samurai credited as the founder of Japan's naval army. The local Katsu Kaishu Memorial Museum honors his life's achievements.

RECOMMENDED PLACES

- 10 Senzokuike Park**
2-14-5 Minami-Senzoku
- 11 Katsu Kaishu Memorial Museum**
2-3-1 Minami-Senzoku

Magome



Creative Exploration

Magome is home to many cultural sites and museums. In the early 1900s, the area attracted numerous writers and artists due to its peaceful surroundings, which led to its nickname, Magome Bunshimura (Writer's Village). Discover works of the prominent artist Hasui Kawase (1883-1957) at the Ota City Folk Museum or paintings by Kawabata Ryushi (1885-1966) at the Ryushi Memorial Museum.

RECOMMENDED PLACES

- 12 Ota City Folk Museum**
5-11-13 Minami-Magome
- 13 Ryushi Memorial Museum**
4-2-1 Chuo

Top Tourist Attractions

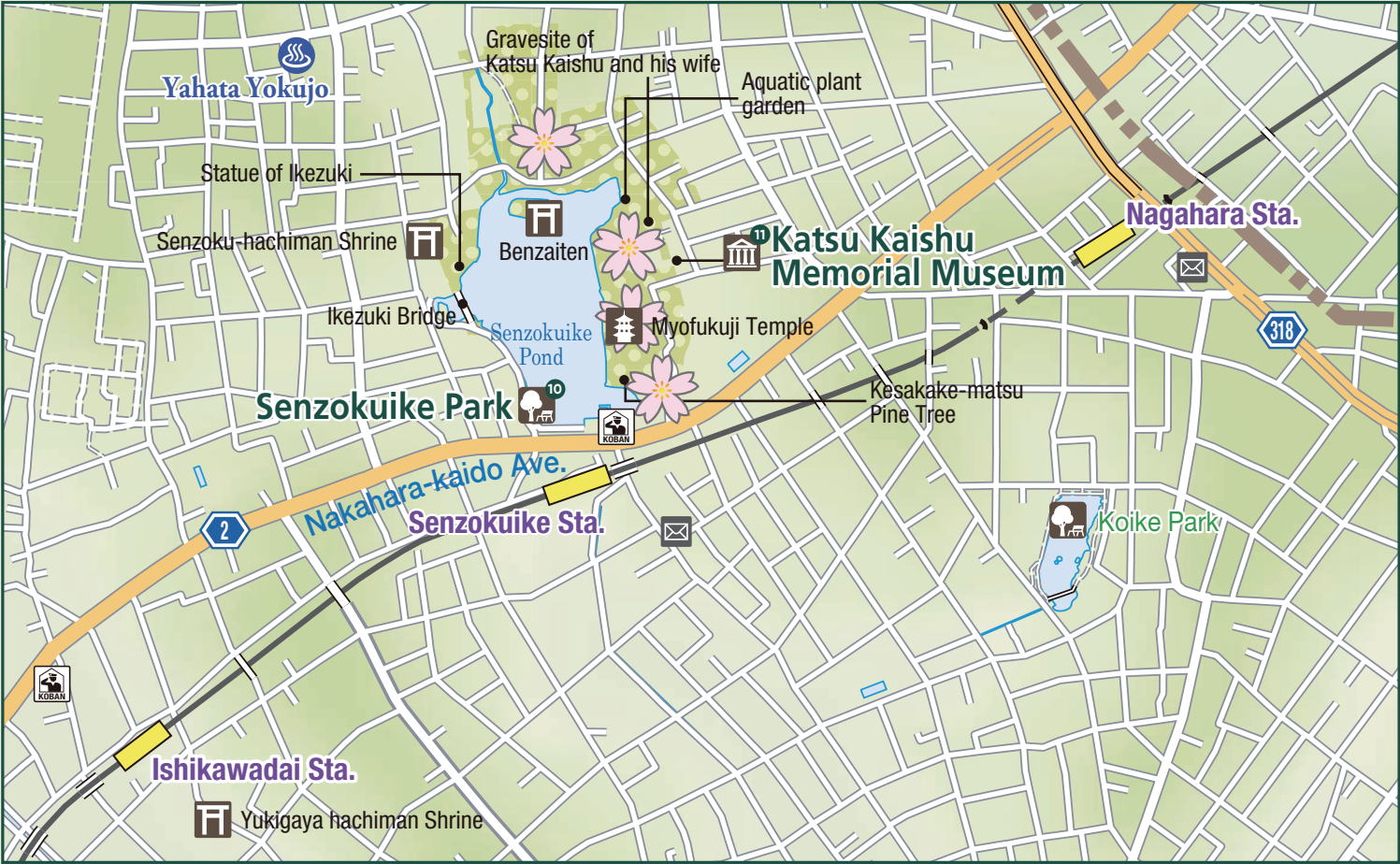
Scale : 1/6,000

 Kamata

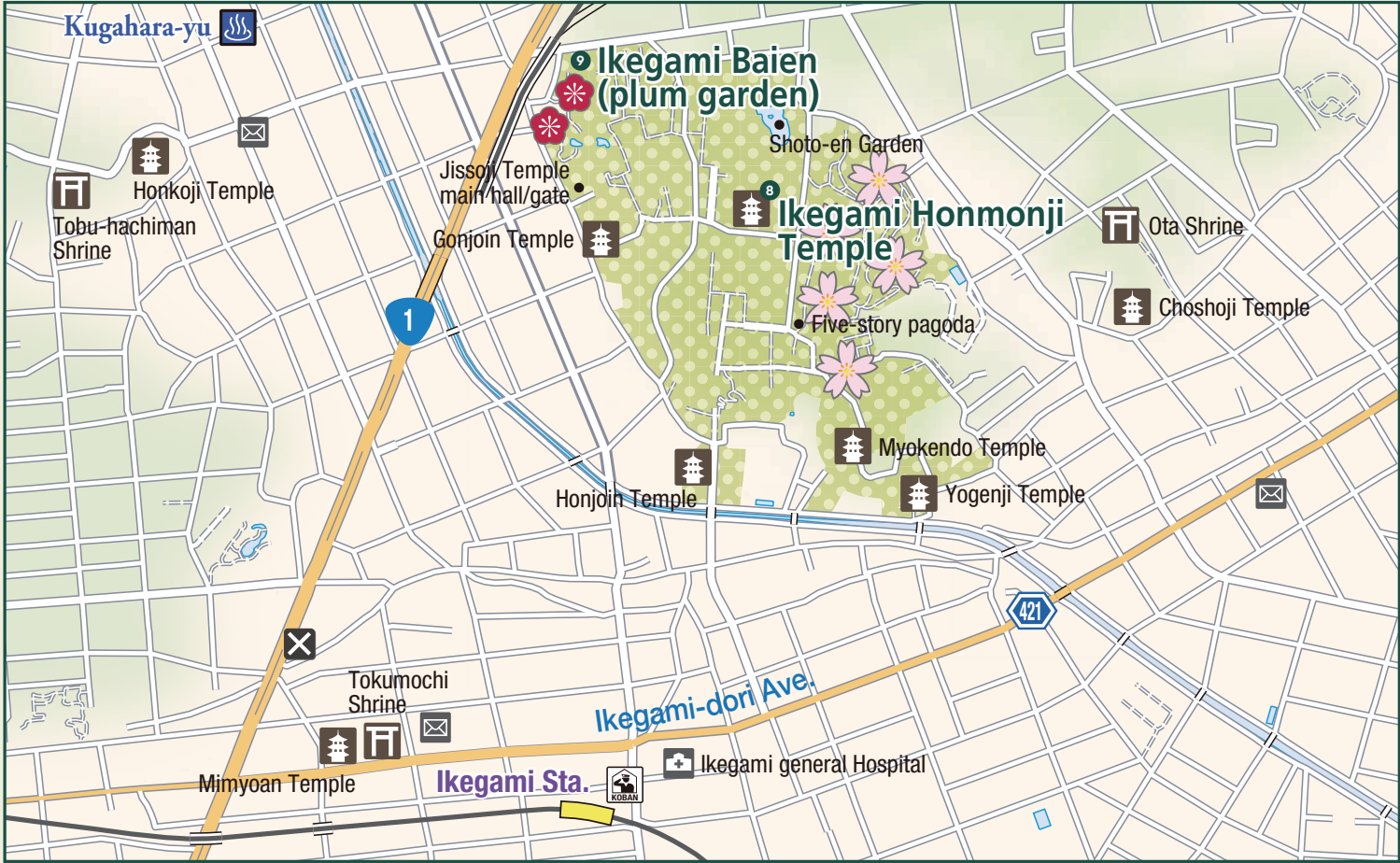
- # Recommended Places
 - Public Bathhouses
 - Accommodations
 - Shopping Streets
 - Churches
 - Fire Stations
 - Schools
 - Tourist Information Center
 - Hot Spring Public Bathhouses
 - Shopping Facilities
 - Shopping Areas/Dining Areas
 - Post Offices
 - Public Restrooms
 - Cherry Blossom Viewing Spots
 - Restaurants
 - Hot Bath Facilities
 - Koban (Police Boxes)
 - Shrines
 - City Office/Branch Offices
 - Libraries
 - Plum Blossom Viewing Spots
 - Hospitals
 - Museums/Memorial Museums
 - Parks
 - Temples
 - Police Stations
 - Other Public Facilities
 - Unique Manhole Covers



📍 Senzokuike



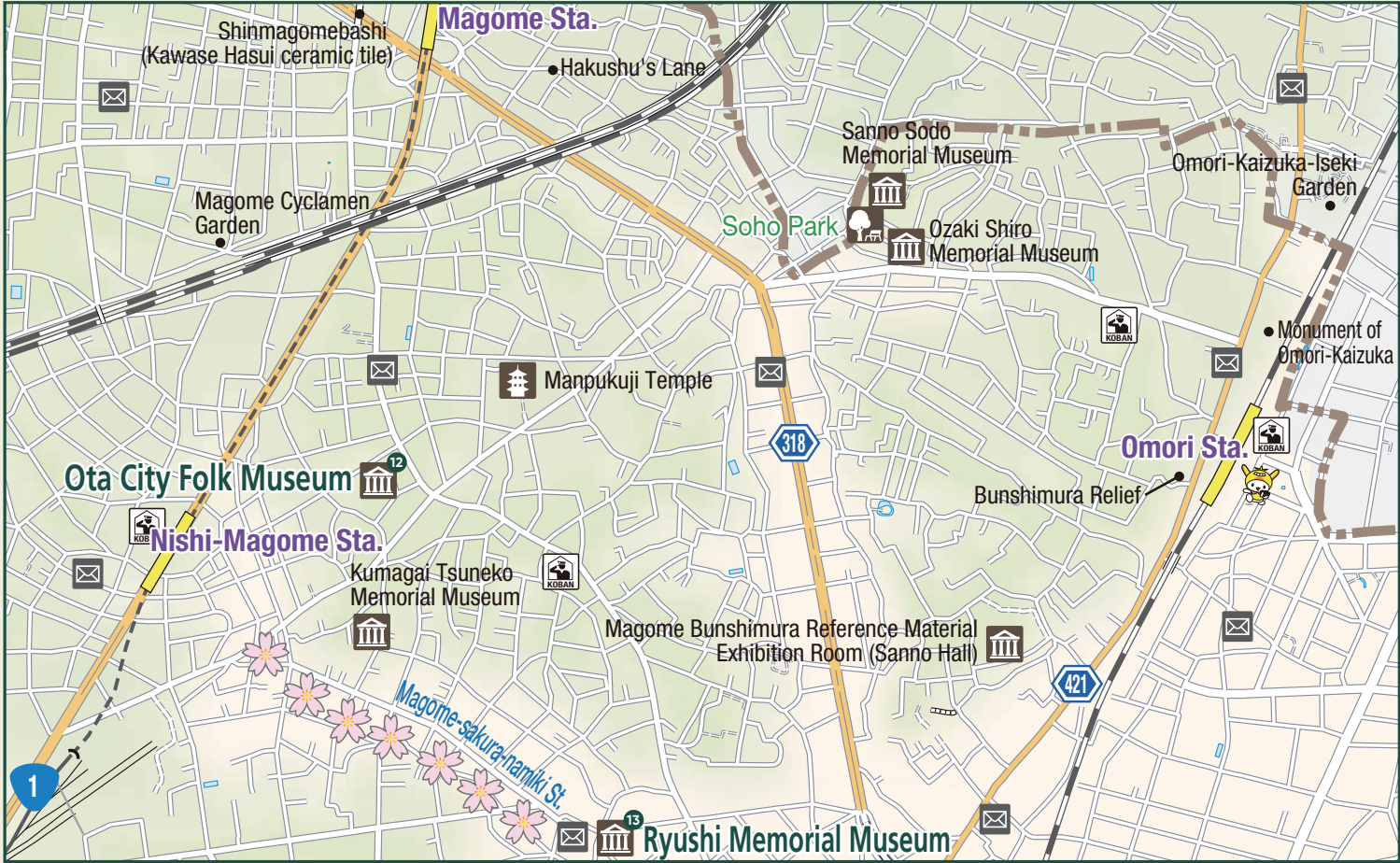
📍 Ikegami



📍 Haneda



📍 Magome





Continues on bottom right.

Continues on bottom left.

「この地図の作成に当たっては、国土院の委託を受けて、国土地理院の地図データ（国土基本情報）電子国土基本図（地図情報）及び数値地図（国土基本情報）電子国土基本図（地名情報）を使用した。（承認番号 平 28 情保 第 800 号）」