

So many cultural places!

Enjoy the culture of Suginami's Chuo Line!

Suginami City's name originates from the Edo period when Sugi (cedar trees) were planted to create a boundary.

First, the JR Chuo Line comes into the spotlight in Suginami City. The line connects Tokyo Station to the east and Takao Station to the west, and has four stations in between: Koenji, Asagaya, Ogikubo, and Nishi-Ogikubo.

However, each station has its own different world. Each town entertains visitors with its rich characters.

Koenji is filled with young musicians and artists.

A century ago, Asagaya was known as Asagaya Bunshi Mura, where some of Japan's greatest writers lived.

With the Chuo Line as well as the Tokyo Metro Marunouchi Line, Ogikubo has both modern station buildings and lush Japanese-style gardens.

Adjacent to Kichijoji, Nishi-Ogikubo is lined with antique stores and unique yakaya.

Refresh your spirit with a tour of the nearby shrines, temples, and gardens. Enjoy the colorful Suginami City.

Learn, Experience, Play / Learn more about Suginami City

EXPERIENCE SUGINAMI TOKYO is an English-language website introducing the area around the four stations, Koenji, Asagaya, Ogikubo, and Nishi-Ogikubo, on the JR Chuo Line located in Suginami City. It is full of useful information, so please check it out!

EXPERIENCE SUGINAMI TOKYO



Enjoy a lush nature, greenery and art.

JC 11 KICHIJOJI Sta. area
吉祥寺 きちじょうじ

A place where three train lines intersect, Kichijoji is a lively place with department stores and museums. Enjoy nature in the spacious park.

Inokashira Park

井の頭恩賜公園



Relax in the lush nature

A 5 minute walk from the south exit of Kichijoji Station. Once you get away from the hustle and bustle of a city, you will find yourself in a quiet and peaceful neighborhood. Wild birds are chirping, people are walking their dogs or jogging. Many people enjoy the greenery on the benches surrounding the large pond. Eating at a lakeside restaurant is also a pleasant experience. There are many places to visit, such as a boat pier, the Inokashira Nature Park where you can visit animals and Inokashira Benzaizen.

Ghibli Museum, Mitaka

三鷹の森ジブリ美術館



Experience the world of Ghibli

A museum that is filled with the vision of Hayao Miyazaki, the director of the internationally popular Studio Ghibli. Visitors can experience the world of Ghibli in the permanent exhibition room that introduces the mechanism and production process of animation, the video exhibition room that shows original works, and the library reading room. There is also a museum store and a cafe. Admission to the Studio is an advance reservation system for specified dates and times, and tickets are available on the website.

JAPANESE SWEETS



Many visitors to Japan from the West are cautious of Japanese sweets with the idea that beans shouldn't be sweet (like the red azuki bean, used in most Japanese sweets), but you shouldn't know it before you try it. Even still, there are matcha and mochi varieties of sweets as well, so surely something for everyone! In Suginami, Tokyo, Asagaya's Pearl Center is well-known for Japanese sweets and a good place to start.

Take a stroll through the antique districts and drinking alley!

JC 10 NISHI-OGIKUBO Sta. area
西荻窪 にしおぎくぼ

Antiques, cafes, and bars coexist with a park rich in nature in Nishi-Ogikubo. The antique street is lined with unique stores.

Monozuki

物奇



A special drink to enjoy in the warmth

Each cup of delicious coffee is carefully brewed with beans purchased from a long-established coffee shop in Koenji. In addition, you can also enjoy light meals and chiflon cakes. The interior of the store is created with an abundance of wood in a blend of Japanese and Western styles, and was inherited from the previous owner's décor. The sound of the pendulum clock ticking away the time is a pleasant accompaniment to the jazz background music.

Kidoairaku

木土藍染



Passing down historic items to the present

Located at the entrance of the antique street, Kidoairaku mainly deals in Japanese folk art and antiques. Many of the items in the store are from Yamagata Prefecture, where the owner is from, but there are also ceramics and ukio-e prints on display. It is an interesting place to stop by to look for unique Japanese souvenirs.

Handsome Shokudo

ハンサム食堂



Serving a lunch set of soup, gyoza rice, and green curry. The fried egg on top of the sweet and salty minced meat enhances the umami. The curry is mild with the taste of coconut and also refreshing with its use of Thai basil.

Enjoy the taste of Thai cuisine in Tokyo

Handsome Shokudo is a diner that stands out on the drinking alley in the Nishi-Ogikubo South Exit area. Open from lunch time, it is crowded with regular customers. The restaurant's owners regularly travel to Thailand to purchase spices and other ingredients, making it a pleasure to enjoy authentic Thai cuisine. The restaurant is divided into the first and second floors, and can be enjoyed by one person or in a group. Every third Sunday of the month, the Hiruchi (Lunch Market) is held at Yanagi Koji.

Delivering anime around the world from Ogikubo!

JC 09 OGIKUBO Sta. area
荻窪 おぎくぼ

Famous ramen shops and many eating places line the streets of Ogikubo. With its anime-related facilities and lush green gardens, you can enjoy history and culture to your heart's content.

Tokyo Polytechnic University Suginami Animation Museum

東京工芸大学 杉並アニメーションミュージアム



Learn about the history of anime

The museum introduces Japanese animation and its history. The fascinating entrance wall features signatures of famous animators. Visitors can also learn about the principles of animation by experiencing the creation of stop-motion animation. Don't miss the special exhibits introducing popular anime!

Otaguro Park

杉並区立大田黒公園



Japanese gardens filled with nature

The site of the former residence of the music critic pioneer Motoo Otaguro is now open to the public as a park. In the Japanese-style with circulating walking paths, visitors can enjoy the rich natural surroundings, including a stream flowing from a well curb in the garden and a pond where koi carp play. In a corner of the garden, the Western-style house where he worked is open to the public as a memorial museum.

INAZUMA CAFÉ

イナズマカフェ



A half-boiled egg softly wraps the tomato-flavored Neapolitan. The cappuccinos are decorated with latte art.

Enjoy the wall murals

What catches the eye in the brightly lit store are the many autographed illustrations by manga artists and animators on the walls. The manga artist Shinji Hiramatsu drew a signed illustration that became a topic of conversation, and many creators still gather here to sign their works. The menu offers a wide variety of Western-style dishes such as omelet rice, hamburger steak, and pasta, as well as cafe drinks and cakes. In the evening, alcoholic beverages are served.

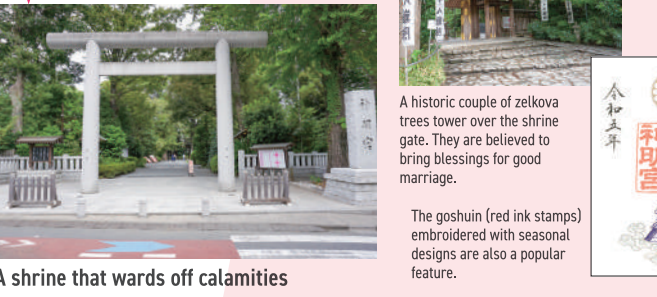
Tanabata in summer and jazz in autumn, Take a walk around the town for culture-lovers!

JC 08 ASAGAYA Sta. area
阿佐ヶ谷 あさぎや

Asagaya is a place where you can enjoy unique drinking establishments. Don't forget to visit the only shrine in Japan that offers prayers for protection from the eight calamities.

Asagaya Shinmeigu Shrine

阿佐ヶ谷神明宮



A shrine that wards off calamities

A shrine where prayers are offered for "hachinai-yoke" (protection against the eight calamities). The shrine was built to honor the feats of Yamatotakeru, a hero of Japanese mythology. After passing through the Torii gate, the entrance to the shrine, visitors will find themselves in a sanctuary overflowing with greenery. Located in the center of the shrine, the main hall is decorated with ornaments symbolizing the gods of the sun, the moon, and the sea. Charms and omikuji fortunes drawn from these deities are also popular.

Laputa ASAGAYA

ラピュタ阿佐ヶ谷



Enjoy historical masterpieces

Laputa Asagaya is recognizable by its warm and welcoming architecture made of old timber. The theater in the basement, "Zamruza Asagaya," offers a wide range of performances including theater, music, and rakugo. The movie theater on the second floor features famous Japanese and foreign films. The wall at the entrance of the first floor welcomes movie fans with autographs of famous directors. The restaurant on the third floor, "Yamanekon," serves French cuisine using organic vegetables to delight visitors.

Gion

喫茶Gion



A café where you can enjoy retro-cuteness

This popular restaurant is crowded with local regulars. Enjoy their hearty signature dishes, Neapolitan spaghetti and sandwiches. The waiters with toppings such as jam and red bean paste are also recommended from items. The store's dimly lit interior has a nostalgic atmosphere with the light of the stained-glass windows placed in every inch. Enjoy the retro space surrounded by antique furniture.

Enjoy the Awa Odori and the lively shopping street!

JC 07 KOENJI Sta. area
高円寺 こうえんじ

Koenji is a bustling center for young people. The lively secondhand clothing stores and variety shops line the streets, making it hard to keep your eyes from wandering.

OTORA

古着面老虎



The closest vintage clothing store from Koenji station

This vintage clothing store for both women and men offers a wide variety of fashionable items such as T-shirts, blouses, dresses, knit bags, leather jackets, military items, and more. The store offers everything from casual to vintage clothing, and visitors can enjoy shopping as if they are making a treasure hunting.

Koenji Hikawa Shrine Kisho (Weather) Shrine

高円寺氷川神社 / 気象神社



The only shrine in Japan that prays for the weather

The shrine originated as a place of prayer for weather forecasting by the former Japanese Army Meteorological Department. It is dedicated to the god of weather. The shrine has now been relocated to the Koenji Hikawa Shrine, a place that has been watched over the local community for many years. Many people pray for passing the weather forecaster exam or for clear skies at the shrine. In recent years, many people from abroad have visited the shrine as it was the setting for the animated film "Weathering with You".

Poem MANO A MANO COFFEE

ほえむ マノアマンノコーヒー



The fruit sandwiches are made with seasonal fruits selected and purchased by the manager. The best sweet muscats and figs are matched with lightly sweetened cream.

Enjoy Japan's unique coffee culture

A coffee store that has been in business for nearly half a century has been inherited and renovated. The brick exterior utilizes the building from that time and customers can feel at home in the interior. As soon as the store opens, it is often packed with regular customers and visitors from faraway places who are looking for its famous coffee and sweets. Each cup of coffee is carefully brewed by hand drip, giving it a unique flavor. The popular homemade pudding is always an item that is sure to sell out.

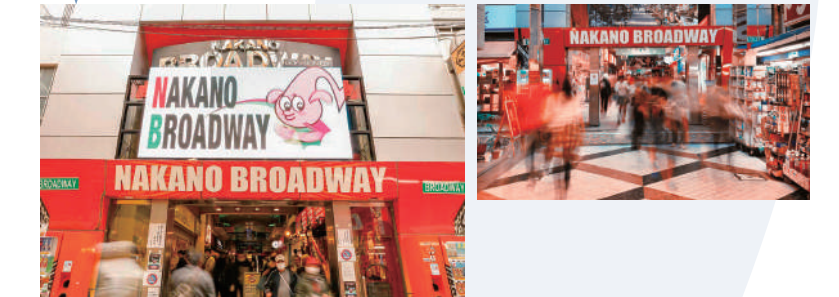
Feel like you have time-traveled with these nostalgic treasures!

JC 06 NAKANO Sta. area
中野 なかの

Located only 5 minutes from Shinjuku Station on the JR Chuo Line. A large collection of unique stores specializing in manga, anime, and toys.

Nakano Broadway

中野ブロードウェイ



Collective building complex with a variety of stores

Nakano Broadway was built around 60 years ago. As an epoch-making building that housed a fashion-forward apartment complex and stores, it became a cultural hub with some of Japan's leading writers and actors moving in. The commercial space from the first basement to the fourth floor currently houses approximately 200 stores, and is attracting attention from around the world as a subculture district, with stores selling secondhand books and retro character goods expanding into the area.

Mandarake

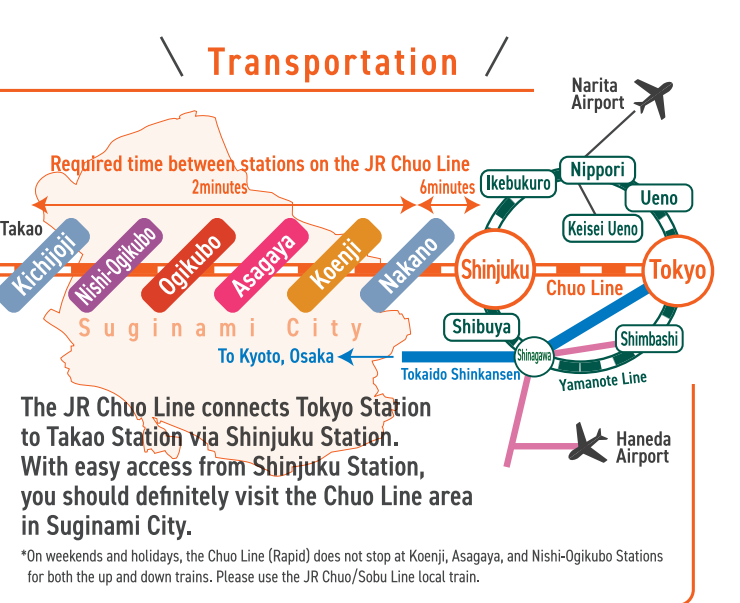
まんだらけ本店



A gathering of pop culture

In 1980, "MANDARAKE" began as a used manga bookstore. Today, there are 33 stores on the first through fourth floors of Nakano Broadway, where manga, anime, figures, plastic models, games, and other Japanese pop culture are gathered. On the 3rd floor, the "Mandarake Main Store" is a used bookstore specializing in manga, with shelves lined with a variety of manga, from manga for juveniles to the latest releases. On the 4th floor, you will find retro goods and cute toys. "Mandarake Hienya" offers nostalgic toys, and "Plastic" has a collection of figures and dolls.

RECORD STORES

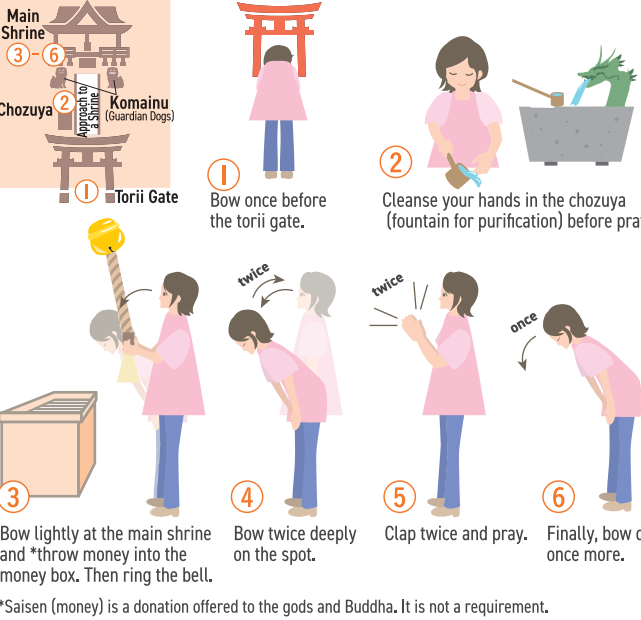


Let's try!

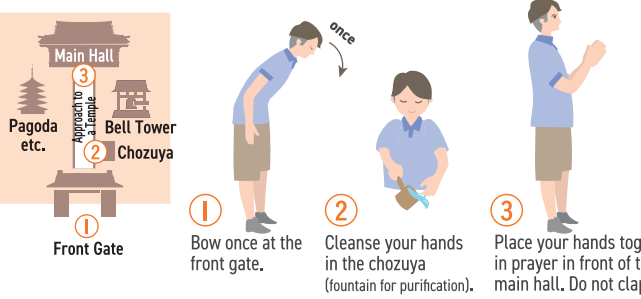
How to worship at shrines and temples

Shrines are dedicated to Shinto deities that have existed in Japan since ancient times. Temples are facilities for Buddhists, where they worship Buddhist statues and practice asceticism. Please note that each has its own method of worship.

How to worship at the shrine



How to worship at the temple



Experience it!

SUGINAMI city

Event Schedule

Suginami City is full of events of all sizes throughout the year. Experience Suginami City in each season!

Spring

Late April
Koenji Bikkuri Street Performance
Surprising performances here and there throughout the city!

Summer

- Early August
Asagaya Tanabata Festival
Have fun strolling around this festival that has been passed down for more than 60 years.
- Late August
Tokyo Koenji Awa Odori
Hear the powerful sound of Japanese drums and cheers of the crowd! A summer tradition in Tokyo.

Autumn

- Late October
Asagaya Jazz Street
Two days of intoxicating jazz rhythms everywhere in the city under the autumn sky.
- Late October
Koenji Fes
Feel more familiar with the chaotic town of Koenji at the "Autumn Grand Cultural Festival".
- Early November
Ogikubo Music Festival
Enjoy classical music in the autumn of art.
- Early to Mid-November
Trolis in the Park
A collaboration of deep autumn and art.
- Early November
Suginami Festa
The largest event in the area that brings smiles to everyone who attends.

Winter

- Mid-February
Koenji Engei Festival
You can find comedy stages in your regular spots and surprising locations.

Issued in February 2025 (2nd edition)
Published and distributed by EXPERIENCE SUGINAMI TOKYO
Produced by Creative.SANO.Japan and Memory Bank

*The information on this guide map is the contents as of February 2025.
*The times published here are regular business times and holidays.
For the latest information, please check the social media accounts of each business.