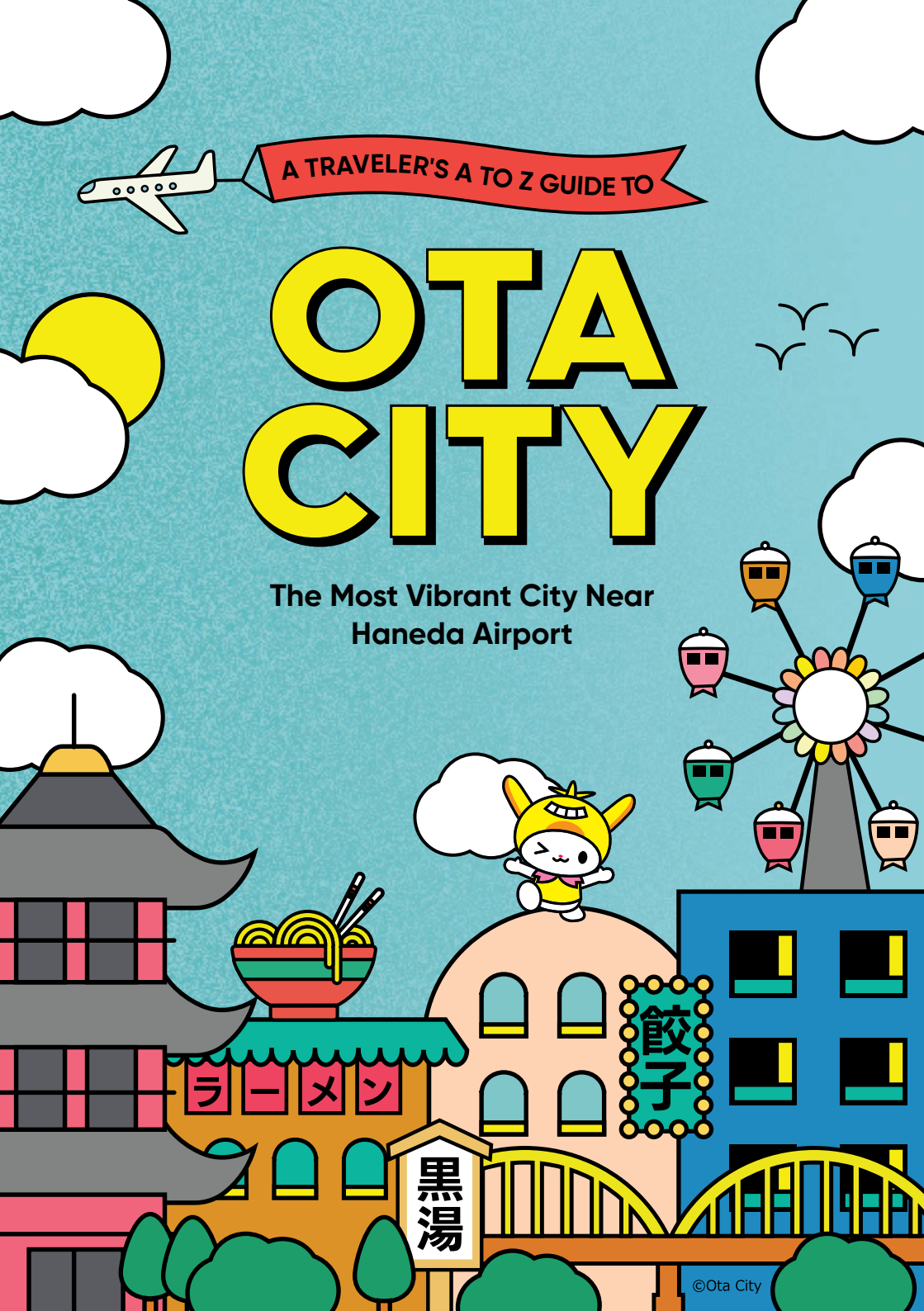




A TRAVELER'S A TO Z GUIDE TO

OTA CITY

The Most Vibrant City Near
Haneda Airport



OTA CITY

AT A GLANCE

Your Tokyo journey starts right here, in Ota City! Home to Haneda Airport, Ota is a city of many "Number 1s." It's the most expansive of Tokyo's 23 wards, houses the largest number of public bathhouses in the capital at the time of writing, and welcomes the highest number of annual passengers (and flights) in Japan. But, to many who call Ota City their home, its true appeal goes beyond the statistics.

A city of beautiful contrasts, Ota is divided into four neighborhoods: the always bustling Kamata; Omori, the most diverse in landscapes and culture; the industrial Kojiya-Haneda; and the more tranquil Chofu that is full of greenery. Each has its own distinct features, offering something unique for every traveler. You'll find a mix of cultural landmarks (p.4-5) and nostalgic hot spring bathhouses (p.6-7) in every corner of the city. You'll enjoy the city's many green spaces (p.8-9) filled with children's laughter during the day and dozens of bustling diners and bars (p.12-15) drawing crowds until late at night. And then you'll witness a newly emerging side of the city where long-standing backstreet shops and workshops are slowly transforming into contemporary, diverse spaces for all (p.16-17).

So explore, experience, and enjoy every moment of your Japan journey, starting here, in Ota City. Find inspiration in these pages as you create your own Japan travel list of "Number 1s"!



Hachiko

Shibuya Sta.

30 mins
from Kamata Sta.

Chofu



Nishi-Magome Sta.

30 mins
from Kei-
yu
Kamata Sta.

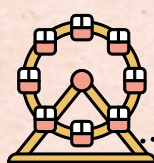
Tamagawa Sta.

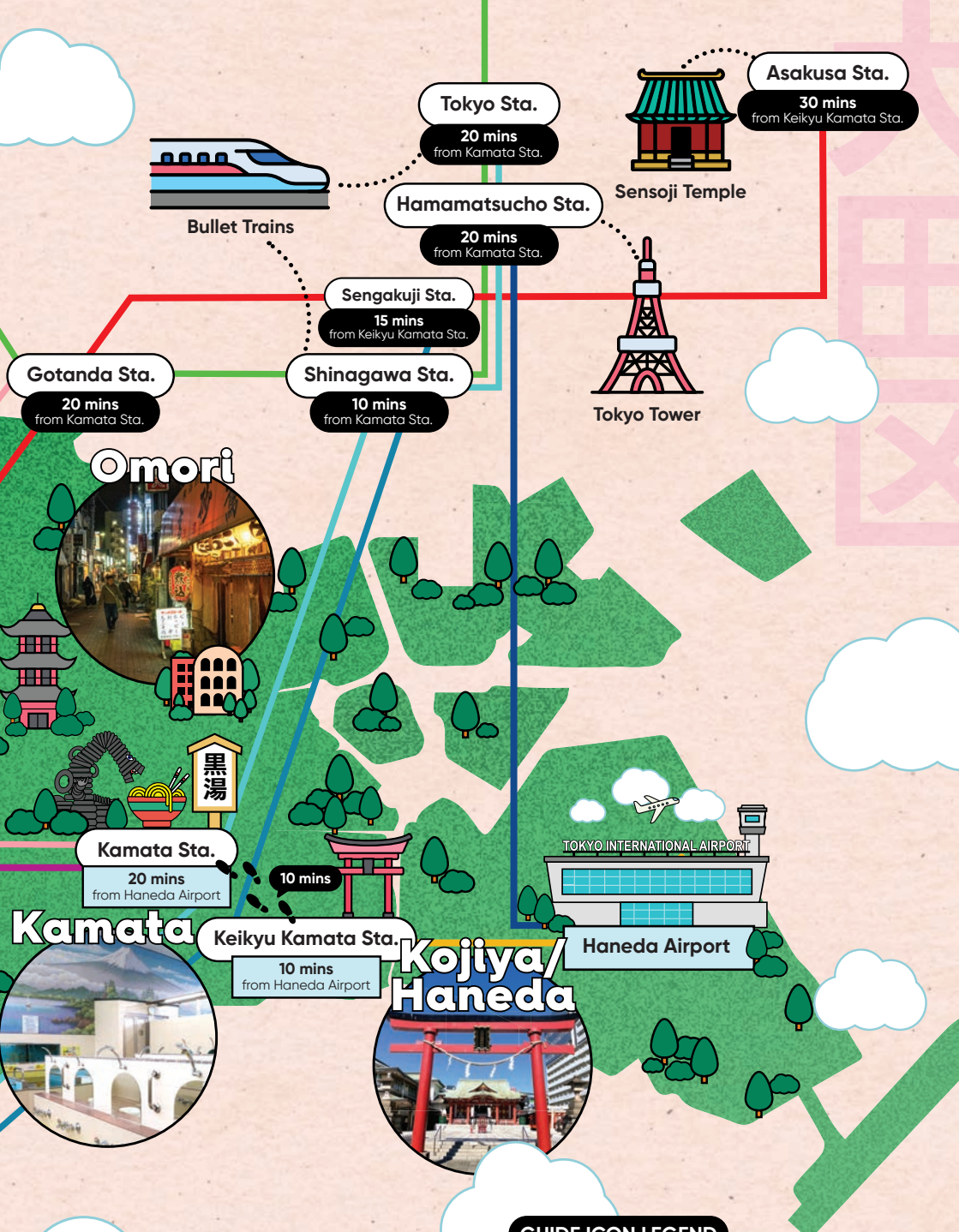
10 mins
from Kamata Sta.

- Kei-
yu
Airport Line
- Kei-
yu
Main Line
- Asakusa Line
- Ikegami Line
- Tamagawa Line
- Toyoko Line
- Keihin Tohoku Line
- Yamanote Line
- Tokyo Monorail

Yokohama Station

20 mins
from Kamata Sta.





Accessible



Photogenic



Credit Card



Wi-Fi



Natural Onsen



Free Entry



Kid Friendly



No Smoking



Parking



Sauna

Must Do

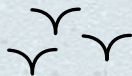
OTA CITY'S ONE OF A KIND

Anamori Inari Shrine

Go through a corridor of red torii gates

This beautiful shrine not far from the airport is dedicated to the deities of the three pillars of livelihood: clothing, food, and shelter. It's characterized by its aesthetic corridor of red torii gates. Walk through them to feel as though you are entering into the world of the spiritual.

3 min from Anamori-inari Sta.



What do all cities you love have in common? Maybe it's photogenic landmarks, good access, or amusing places to keep you engaged and well-rested. Ota City has them all – and more.



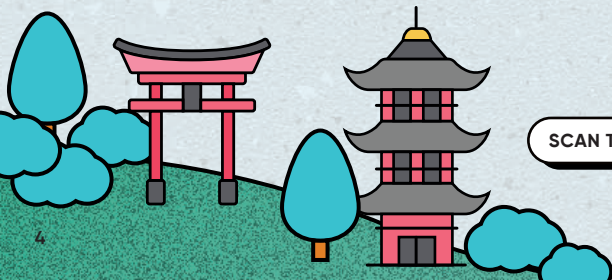
Bathhouse

Dip your feet into Tokyo's nostalgic sento culture

Ota City is famous for its many public bathhouses with a retro vibe, known as 'sento.' Among them are many natural hot springs, including the famous 'kuroyu' (black water) baths, renowned for their mineral-rich waters. Rest your weary feet at the classic Hasunuma Onsen (pictured) as a start.

Hasunuma Onsen: 2 min from Hasunuma Sta.
For other locations, see p.7

SCAN TO DISCOVER MORE LOCAL GEMS





Capture

Splendid Japanese aesthetics at Senzokuike Park

Have a stroll in this park dotted with a shrine, an arched red bridge, and multiple classic Japanese garden elements. Or enjoy a peaceful paddle boat ride at its picturesque pond. Senzokuike is beautiful year-round but particularly captivating in spring when the cherry trees bloom.

📍 2 min from Senzokuike Sta.



Discover

Local culture and people at a 'shotengai' street

'Shotengai' are traditional shopping streets filled with independent shops selling everything from daily goods and groceries to fashion. Ota City has the most shotengai streets in Tokyo! Asuto Shotengai (pictured) outside Keikyu Kamata station is conveniently accessible from the airport.

📍 Asuto Shotengai: 1 min from Keikyu Kamata Sta.



Eye Up

Kanto's oldest five-story pagoda at Ikegami Honmonji Temple

Get a taste of Japanese history and culture as soon as you step off the plane with the 750-year-old Ikegami Honmonji Temple, the main temple of the Nichiren Sect of Buddhism. This gorgeous historic temple houses the oldest five-story pagoda in the Kanto region.

📍 10 min from Ikegami Sta.



Soak in Ota City's Retro Bathhouses

Ota City is famous among sento enthusiasts for having the most public bathhouses in Tokyo and for their top quality. Check them out for yourself – many are within a short train ride from Haneda Airport!

HISTORY & CULTURE

Tokyo's first public bathhouse opened in 1591, paving the road for many to quickly follow suit. Those facilities thrived in a city where owning a private bath was rare and served as communal places to mingle. With the advancement of modern apartments, sento bathhouses significantly decreased, though they remain popular as affordable spots to unwind and connect. Ota City's sento culture is still strongly preserved and flourishing.

CHARACTERISTICS

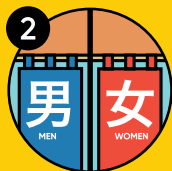
Sento differ from onsen (hot springs) as they don't typically use natural spring water. However, Ota City is blessed with some natural onsen public bathhouses, including the famous 'kuroyu' (black water) springs, renowned for their mineral-rich waters. Sento are public facilities with a fixed reasonable cost across the city. Most of them are tattoo-friendly, too.

HOW TO USE SENTO



PAY

Pay at the counter and purchase amenities.



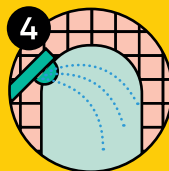
ENTER

Head to the changing room and undress.



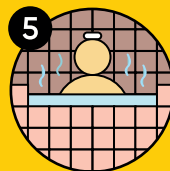
STORE

Put your clothes and valuables in a locker.



RINSE

Wash yourself before entering the baths.



REFRESH

Sit back, relax, and enjoy the silence!



KAISEI-YU

This popular 'kuroyu' hot spring has an aquarium with adorable resident goldfish that the kids (and adults) can never have enough of.

- 🕒 3pm-11:30pm. Closed Fri
- 📍 7 min from Kamata Sta.



YAHATA YOKUJO

Renovated in 2006, this sento offers multiple baths heated at lower temperatures than the average. Popular among long-time soakers.

- 🕒 4pm-12am. Closed Fri
- 📍 5 min from Ookayama Sta.



SHIN-NOMIGAWA-YU

Multiple baths, including an open-air bath and sauna room. Enjoy a refreshing drink and a massage chair at the rest area after bathing.

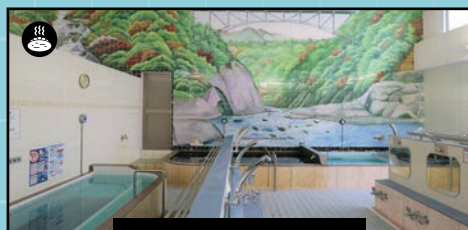
- 🕒 Mon-Sat: 11am-11pm
Sun: 6am-10am & 3pm-11pm. Closed Fri
- 📍 18 min from Otorii Sta.



KUGAHARA-YU

Recently renovated, this bath is popular with families and features a majestic Mt. Fuji mosaic on its walls, an open-air 'kuroyu' bath, and a sauna.

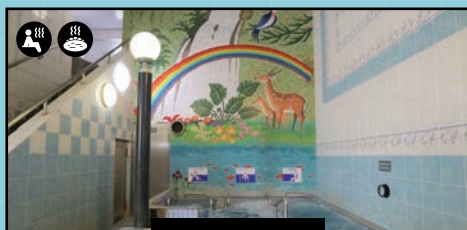
- 🕒 Tue-Fri: 2pm-12am
Sat, Sun & Holidays: 12pm-12am. Closed Mon & every 4th Tue (open if it falls on a holiday)
- 📍 14 min from Nishi-Magome Sta.



DAIICHI-SAGAMI-YU

Relax in this hot spring's multiple baths, which include a highly concentrated carbonated bath and a natural 'kuroyu' hot spring.

- 🕒 2:30pm-11pm. Closed Mon
- 📍 12 min from Zoshiki Sta.



SACHINO-YU

One for the early risers, this famous natural hot spring with multiple indoor baths, an outdoor bath, and a rest area, opens as early as 6 am.

- 🕒 6am-11am, 2pm-11pm. Closed Mon
- 📍 9 min from Kojiya Sta.

Where to Unwind

SEE MORE LOCATIONS



Visit with the Kids

OTA CITY'S PARKS & GREEN SPACES

A lively residential area by day, Ota City ensures the little ones have plenty of fun areas to play. From diverse green spaces to unique parks, the little ones will have a blast in this city!



Ferris

Ride Kamataen's historic tulip Ferris wheel

This beloved tulip-shaped mini Ferris wheel on the rooftop of Kamata Station's Tokyu Plaza shopping complex has been an unrivaled local icon since its establishment in 1968. It earned itself the name "Shiawase no Kanransha," meaning "Ferris Wheel of Happiness." Enjoy the open space with various kid-friendly activities.

📍 Direct access from Kamata Sta.

🕒 10am-6pm (Dec-Feb until 5pm)



Giant

Say hi to a friendly beast at 'Tire Park'

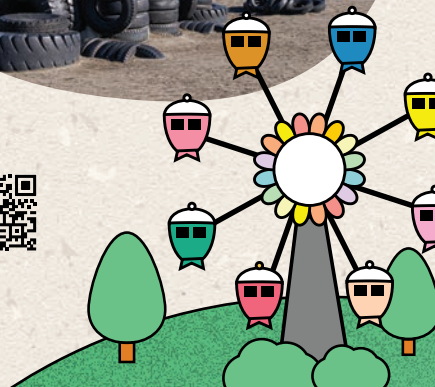
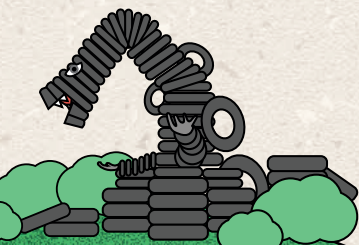
Officially known as Nishi-Rokugo Park, the 'Tire Park' is a well-known Ota City landmark with swings, large slides, and playgrounds made out of tires. But the highlight? A giant tire 'creature' watching over the entire park.

📍 10 min from Zoshiki Sta.

FREE



EXPLORE FURTHER!



H

armony

*Pray for children's safety at
Tamagawa Sengen Shrine*

From its position on top of the hill, you can see gorgeous views of Tamagawa River and even Mt. Fuji. The shrine is visited to pray for a number of blessings related to children and family prosperity, including easy childbirth, family harmony, and even luck in the farming industry.

2 min from Tamagawa Sta.

FREE



ndulge

*Bask in Japan's seasonal
beauty at Tamagawadai Park*

Known for its beautiful hydrangea blossoms in June, this park spreads across an area of around 750m, making for a peaceful walk any time of year. Thanks to its 300 cherry trees and great views of the Tamagawa River, this park has earned a special place in residents' hearts.

1 min from Tamagawa Sta.

FREE



J

onanjima

*Picnic with planes at
Jonanjima Seaside Park*

Proper beaches close to Tokyo are hard to come by, but Jonanjima Seaside Park offers a little slice of beach and boardwalks near the city. The peaceful location has barbecue and picnic areas, and you can while away the time imagining where the planes overhead are flying to and from.

3 min walk from Jonanjima 4
chome bus stop



FREE



History & Culture

OTA CITY'S AESTHETIC LANDMARKS

Katsu Kaishu

Learn about the samurai who helped build modern Japan

The Ota City Katsu Kaishu Memorial Museum is Japan's first museum dedicated to the fascinating life of Katsu Kaishu, a former samurai credited as the founder of Japan's naval army and a key figure in the peaceful surrender of Edo Castle.

📍 6 min from Senzokuike Sta.

🕒 10am–6pm. Closed Mon

💰 ¥300 (adults), ¥100 (children)



Ota City is home to many historical landmarks and museums. Each, in its unique narrative, tells stories of how the city played an essential role in developing Tokyo as a megapolis.



Local Stories

Get a grasp of the city at the Ota City Folk Museum

Dive into the history, culture, and art of Ota City at this small but informative local museum. Featuring famous artworks by Hasui Kawase (1883–1957), a renowned 'hanga' artist who painted numerous Ota landscapes in his lifetime.

📍 7 min from Nishi-Magome Sta.

🕒 9am–5pm. Closed Mon



DETAILS & MORE SUGGESTIONS





Motion

Pray for safe travels at Haneda Shrine

Haneda Shrine is an ancient Ota landmark said to have been established over 800 years ago. Respected by many airlines, it has a festival every year in July, and is visited year-round for air traffic and transport safety and family protection, keeping you safe when in motion.

📍 10 min from Otorii Sta.

FREE



Nori

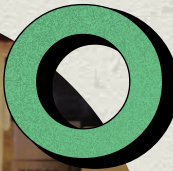
Embrace the power of seaweed at the Omori Nori Museum

Nori (a type of seaweed) is a Japanese cuisine staple. You can find it in ramen, on rice balls, or even crisped up as a snack. It's an easy treat but takes a long time to prepare. At the Omori Nori Museum, you can explore the meticulous process and dive deep into its history.

📍 15 min from Heiwajima Sta.

🕒 9am-5pm (June-Aug until 7pm).
Closed every third Mon (open if it falls on a holiday)

FREE



Ota Open Factory

See where the city's industrial magic happens

With its factories sustaining various Japanese industries, Ota City has played a vital role in Tokyo's history and development. The annual Ota Open Factory is a series of events that provide insight into the work of those essential factories, with hands-on experiences and explanations to help understand their part in history.

📍 Multiple venues

🕒 Dates vary. Check website for latest updates & dates

FREE



Local Delicacies

OTA CITY'S FOOD AND DRINKS

Home to 'hanetsuki' gyoza and all things soul food, Ota City is your go-to place if you are in Japan on a culinary journey. Enjoy a range of unique delicacies, plus a few familiar tastes.



Pints

Retro bar hopping around Kamata and Omori

Ota City is a great place not only for food but also for drinks! Bourbon Road (pictured) on Kamata Station's west exit and the Omori Inshokugai Building outside Omori Station's east exit are two of the city's most popular nostalgic bar-hopping alleys with dozens of small bars. Why limit yourself to one spot when you could try them all?

- 📍 Bourbon Road: 2 min from Kamata Sta.
- 📍 Omori Inshokugai Building: 2 min from Omori Sta.

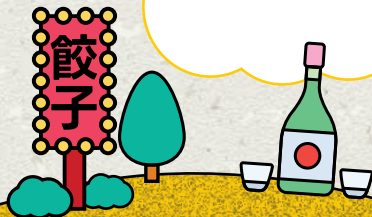
Quest

Go on a hunt for the best 'hanetsuki' gyoza in town

Defined by a crispy crust on the outside and a juicy, umami inside, Ota's 'hanetsuki' winged gyoza is a local staple. The dish first made its way onto the scene at Kamata's Nihao (pictured) in 1983, and has been going strong ever since. Taste at various locations around Kamata.

- 📍 Nihao: 3 min from Keikyu Kamata Sta.
- 🕒 11:30am-10pm

For more options, scan the QR on p.15



Ramen

Get a taste of top-quality ramen around Kamata

This appetizing bowl of hot noodles served in a rich, filling broth is Japan's soul food. Head to Kamata to find some of Japan's best-ranked ramen shops, including Niboshi Tsukemen Miyamoto (pictured), a classic seafood bowl featuring delicious noodles dipped in a rich broth.

- 📍 Niboshi Tsukemen Miyamoto: 5 min from Kamata Sta.
- 🕒 11am-3pm. 5:30pm-9pm. Closed Sun



Savor

Enjoy diverse tastes from around the world

It's only fitting that an area so well-connected to the world would also have a diverse cuisine. In Ota City, you'll also find numerous tastes from the world's top culinary capitals. Head to Spain's Sonrisa (pictured), Vietnam's Thi Thi, Taiwan's Kiki Toujan, and many more, all near Kamata Station.

- 📍 Sonrisa: 4 min from Keikyu Kamata Sta.
 - 🕒 5pm-1am. Closed Sun
- See p.15 for other locations

Tonkatsu

Taste Japan's beloved crispy deep-fried pork cutlet

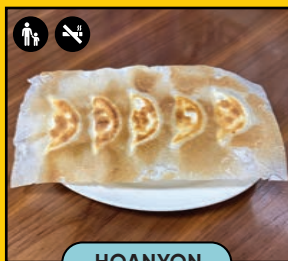
This traditional deep-fried pork cutlet dish served with shredded cabbage and sauce is a favorite across Japan. Ota City is home to several world-acclaimed tonkatsu restaurants, including Tonkatsu Aoki (pictured) near Kamata Station.

- 📍 Tonkatsu Aoki: 4 min from Kamata Sta.
- 🕒 11am-3pm, 5pm-9pm. Closed Mon



WHERE TO EAT & DRINK

GYOZA



HOANYON

One of Kamata's most homely Chinese restaurants, head here if you're craving 'sui-gyoza' (boiled dumplings in soup) and 'hanetsuki' gyoza.

- 4 min from Kamata Sta.
- Mon-Fri: 11:30am-2:00pm, 5pm-11pm
Sat, Sun & Holidays: 11:30am-2:30pm, 5pm-11pm (Sun until 10pm)



KONPARU

Casual Chinese restaurant famous for its round-shaped gyoza dumplings, Peking duck, and a wide variety of reasonably-priced dishes.

- 1 min from Keikyu Kamata Sta.
- 11:30am-11pm



SHUNKOEN

The perfect stop for all things gyoza dumplings (think shrimp and veggie fillings, steamed, boiled, baked, and pan-fried) and beyond.

- 3 min from Kamata Sta.
- 11am-2pm, 5pm-11pm

JAPANESE CUISINE



TONKATSU JINENBO

Cooking delicious tonkatsu dishes since 1991. Served on traditional Karatsu ware plates from Kyushu and best paired with Japanese sake.

- 6 min from Kugahara Sta.
- 11:30am-3pm, 5pm-10pm
Closed Wed



SANYO SHOKUDO

Situated inside the Ota Market, this reasonably-priced Japanese cuisine diner opens early in the day and will leave you full and satisfied.

- 15 min by taxi from Haneda Airport
- 5am-2pm. Closed Wed, Sun & Holidays



KUSHIKOU

Sashimi, 'yakitori' chicken, and seasonal vegetables. This lively spot is popular with locals and can be your go-to-stop for all things Japanese!

- 3 min from Kamata Sta.
- 5pm-11:30pm
Closed Sun & Holidays

Where to Eat & Drink

It's a challenge to narrow it down from dozens of local restaurants and dishes that will leave you pleasantly satisfied, but if we had to... here's a good start!

RAMEN



**SHINJIKO SHIJIMI
CHUKASOBA KOHAKU**

This Michelin-listed shop works on a reservation-only system, but when you finally grab a seat, you'll know why it's so popular. Enjoy the rich broth, cooked with shijimi clams from Shimane's Lake Shinji.

- 📍 5 min from Zoshiki Sta.
- 🕒 Mon-Fri: 11:30am-3:30pm
Sat: 11am-3:45pm
Closed Sun & Holidays



MENYA KOKORO

Menya Kokoro specializes in "Taiwan mazesoba," a soupless ramen dish topped with more than a few of your favorite savory ingredients.

- 📍 6 min from Ookayama Sta.
- 🕒 11am-3pm, 5pm-9pm



CHUKASOBA ISEBE

A 10-seat favorite locale serving delicious noodles in a white and black soy sauce broth, topped with delightful wonton dumplings.

- 📍 1 min from Yaguchinowatashi Sta.
- 🕒 Tue, Thu, Sat & Sun: 11:30am-2:30pm, 6pm-9pm
Mon & Fri: 11:30am-2:30pm
Closed Wed

INTERNATIONAL CUISINE



KIKI TOUJAN

A day that starts with a proper breakfast is a good day. Here, you can taste an authentic Taiwanese breakfast (or lunch) along with other favorites.

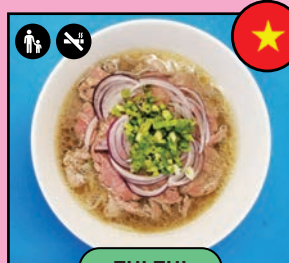
- 📍 3 min from Kamata Sta.
- 🕒 9am-1:30pm. Closed Mon



MASHAL

Authentic Indian court cuisine at its best. The long awaited creation of Mohammad Hussein, a famous Mughlai cuisine chef in Japan.

- 📍 2 min from Omori Sta.
- 🕒 Mon, Wed-Fri: 11am-3pm, 5pm-10pm
Sat, Sun & Holidays: 11am-4pm, 5pm-10pm Closed Tue



THI THI

Saigon meets Tokyo in a cozy setting, serving favorite Vietnamese dishes, plus more. Aim for an early arrival – it gets crowded fast here!

- 📍 4 min from Kamata Sta.
- 🕒 Tue-Fri: 4pm-10pm
Sat, Sun & Holidays: 12pm-10pm. Closed Mon

CAN'T CHOOSE? FIND MORE



Enjoy & Learn

OTA CITY'S EXCLUSIVE EXPERIENCES

A lot is happening on any given day in Ota City. From creative events at unique venues to seasonal blossoms in beautiful parks, there's always so much to look forward to in the city.

U

nleash

*Your creativity at
Gallery Minami Factory*

While factories have played a crucial part in Ota's history, many are sadly closing their doors. Gallery Minami Factory repurposed a former factory into a rental gallery, where visitors can enjoy art exhibitions, concerts, and creative events.

📍 13 min from Kojiya Sta.

🕒 Varies per event



V

isit

*Tokyo's largest wholesale
market and enjoy fresh bites*

Ota Market is Japan's largest wholesale market. Enjoy unique fresh produce, flowers, fish, and many eateries that use fresh ingredients from the market. Kanda Fukuju, with its giant tempura bowls, is an entertainment spot on its own!

📍 A short walk from Ota-Shijo bus stop

🕒 5am-3pm. Confirm schedule before visiting

W

alk

*Through the history of
Japan's aviation*

JAL (Japan Airlines)'s JAL SKY MUSEUM and ANA (All Nippon Airways)'s ANA Blue Hangar Tour near Haneda Airport give you an intriguing insight into life and work in the air and the history of Japan's two most esteemed airlines.

📍 JAL SKY MUSEUM: 2 min from Shin Seibijo Sta.

ANA Blue Hangar Tour: 4 min from Nishi-Shin Seibijo bus stop

🕒 Vary. Advanced booking required





Xplore

*Seasonal beauty
at Ikegami Baien*



While cherry blossoms usually get all the glory, if you're visiting Japan in February, you can see their vibrant cousins – plums – bloom instead. Head to Ikegami Baien to see them at their best. Return in spring for a sight of gorgeous azaleas, and in early summer for the hydrangeas.

📍 10 min from Nishi-Magome Sta.



🕒 9am-4:30pm. Closed Mon
(Open every day in Feb-Mar)

Yearn

*No longer for the
perfect cup of coffee*

The best cup of coffee is one that comes with a good story. You'll find one like that at BUCKLE COFFEE, an old Ota City factory turned into a hipster cafe roastery. Enjoy your hot drink while looking around for traces from the past. Hint: check the in-store tools and machinery.

📍 7 min from Zoshiki Sta.



🕒 9am-5pm. Closed Wed & Thu



Zepp Haneda

*Sing along with local
fans at a Tokyo concert*



Inside Haneda Innovation City, you'll find Zepp Haneda. This massive concert hall holds a maximum of 3,000 guests, inviting artists from around the world. Their schedule is always packed with a great selection of groups and artists, so make sure to have a look when you're in Ota!

📍 Direct access from Tenkubashi Sta.



MORE DETAILS, MORE FUN!

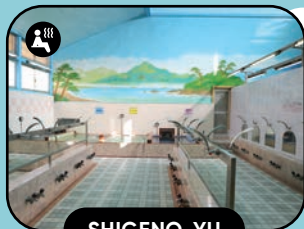


See Before You Fly

Must-visit places within
15 min from Haneda Airport T3

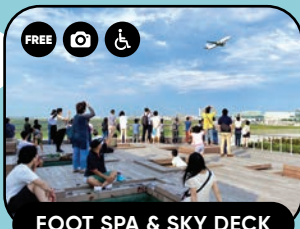


Got a spare minute before your flight? Browse through some of our favorite places near Haneda Airport. The perfect way to make an extra few memories before Tokyo sees you again!



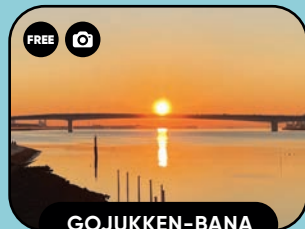
SHIGENO-YU

With an exterior reminiscent of an ancient wooden shrine, a Mt. Fuji mural in the bath area, and a lovely pond with koi fish, this adorable sento lives by its motto, "Bathhouses are oases in the city."



FOOT SPA & SKY DECK

This scenic spot may discourage you from leaving Tokyo, but we recommend it anyway. Dip your toes in an open-air foot spa as you watch planes fly in and out of the city. Gets extra romantic at night.



GOJUKKEN-BANA

If you're in the area around sunrise, let this be your last Tokyo sight! This tiny, unattended shrine overlooks Tama River and Haneda Airport in the distance and has some of the city's best early morning views.

📍 Closest Sta.: Anamori-inari

🕒 3pm-12am
Closed Tue & Sat

📍 Closest Sta.: Tenkubashi

🕒 5:30am-11:30pm

📍 Closest Sta.: Tenkubashi

🕒 Anytime



CHARUME

Your last (and first) Tokyo ramen is crucial, so make sure you're getting the real deal. Charume prides itself on its beloved bowls of chicken and kombu broth ramen topped with several large pork slices.

📍 Closest Sta.: Kojiya

🕒 Tue-Fri: 11am-3pm, 6pm-9pm
Sat, Sun & Holidays: 11am-3pm
Closed Mon



BOOK CAFE UZUKI

A former bookstore turned coffee shop, Uzuki is the perfect spot for book lovers. But there's more – their signature "Haneda pudding," an eggcellent sweet sensation to end, or start, your Tokyo journey.

📍 Closest Sta.: Anamori-inari

🕒 Tue-Sat: 10:30am-9pm
Sun & Holidays: 10:30am-8pm
Closed Mon & some Sundays

Locals Love

Whether it's a hidden gem or popular point, you can't go wrong with a local tip. Here, Ota City folks* share their favorite must-visit local spots.

RYUSHI MEMORIAL MUSEUM



HARUKO MASUDA, TEACHER

"The Ryushi Memorial Museum has paintings by my favorite artist, Ryushi Kawabata. You can also view his atelier and beautiful garden here."

- 📍 15 min from Nishi-Magome Sta.
- 🕒 9am-4:30pm. Closed Mon

MAGOME SAKURA NAMIKI DORI



HIDEYUKI OTA, EDITOR

"This serene cherry blossom alley follows the course of a former local stream and is usually not crowded. My favorite spot for spring photography!"

- 📍 12 min from Nishi-Magome Sta.

DENENCHOFU ICHO NAMIKI AVENUE



OSAMU HAYASHI, GUIDE

"This peaceful ginkgo avenue turns bright yellow in late November and makes you feel like you're walking under an autumn-colored canopy."

- 📍 4 min from Den-en-Chofu Sta.

CRESCENT & MOLLY



AO UDAGAWA, BUSINESSMAN

"Japanese food is famous abroad, but our pastries are also delicious. This bakery's crescent-shaped bread is a long-running local favorite!"

- 📍 5 min from Heiwajima Sta.
- 🕒 Wed-Sat: 7am-7pm
Sun: 7am-4pm
Closed Mon & Tue

NOMIGAWA SWEETS



SALLY YOSHIMOTO, CHEF

"A patisserie for all, by all. This shared kitchen-cafe offers people a rental space to cook and sell their treats. Every day features something new to try!"

- 📍 7 min from Ikegami Sta.
- 🕒 1pm-4pm. Closed Wed & every other Mon & Thu

SATSUKINO KAMIYAEN



RYO ITO, REAL ESTATE AGENT

"If you like green tea, as I do, visit this cafe. It specializes in green tea and sweets and it's my go-to place to enjoy an afternoon snack."

- 📍 2 min from Ishikawa-dai Sta.
- 🕒 10am-7pm. Closed Mon

*All names are pseudonyms.

Ota City Tourist Information Center

Find essential information about sightseeing in Ota City, buy unique local souvenirs, and attend various cultural workshops and activities.

- 🕒 Daily, 9am-8pm

ACCESS & WORKSHOP DETAILS





Ota Tourism Association
Official Website

©Ota City

All information contained in this brochure,
including but not limited to text, images,
and logos, is protected by copyright laws.
Any unauthorized use or reproduction of this
brochure is strictly prohibited.

Published in June 2024



TOKYO INTERNATIONAL AIRPORT

羽田空港