

# MAP of TOKYO

English

日本語

## Hotels and Tourist Attractions



**JAPAN HOTEL ASSOCIATION TOKYO BRANCH**

日本ホテル協会東京支部

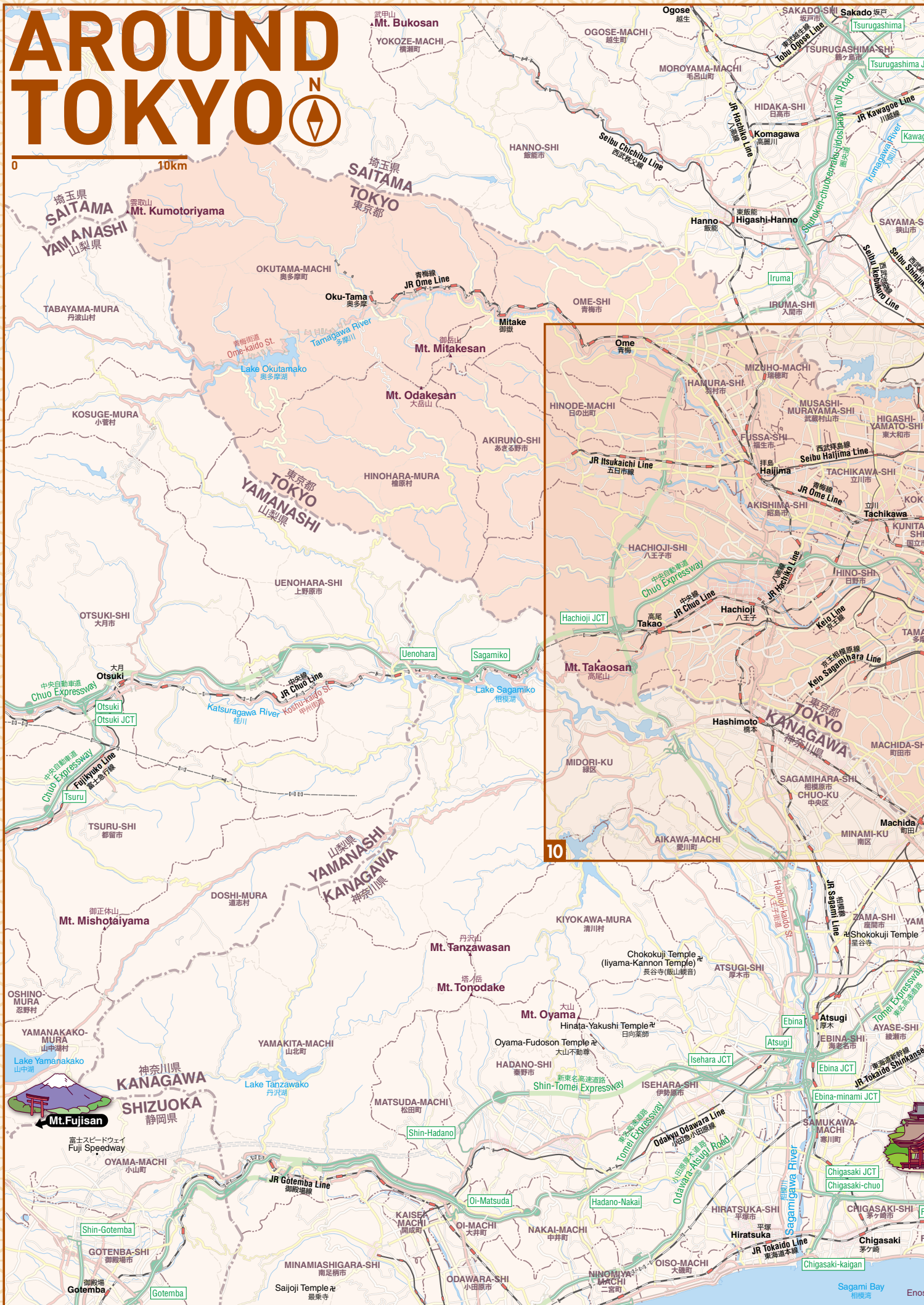
2023.11.



# AROUND TOKYO



0 10km



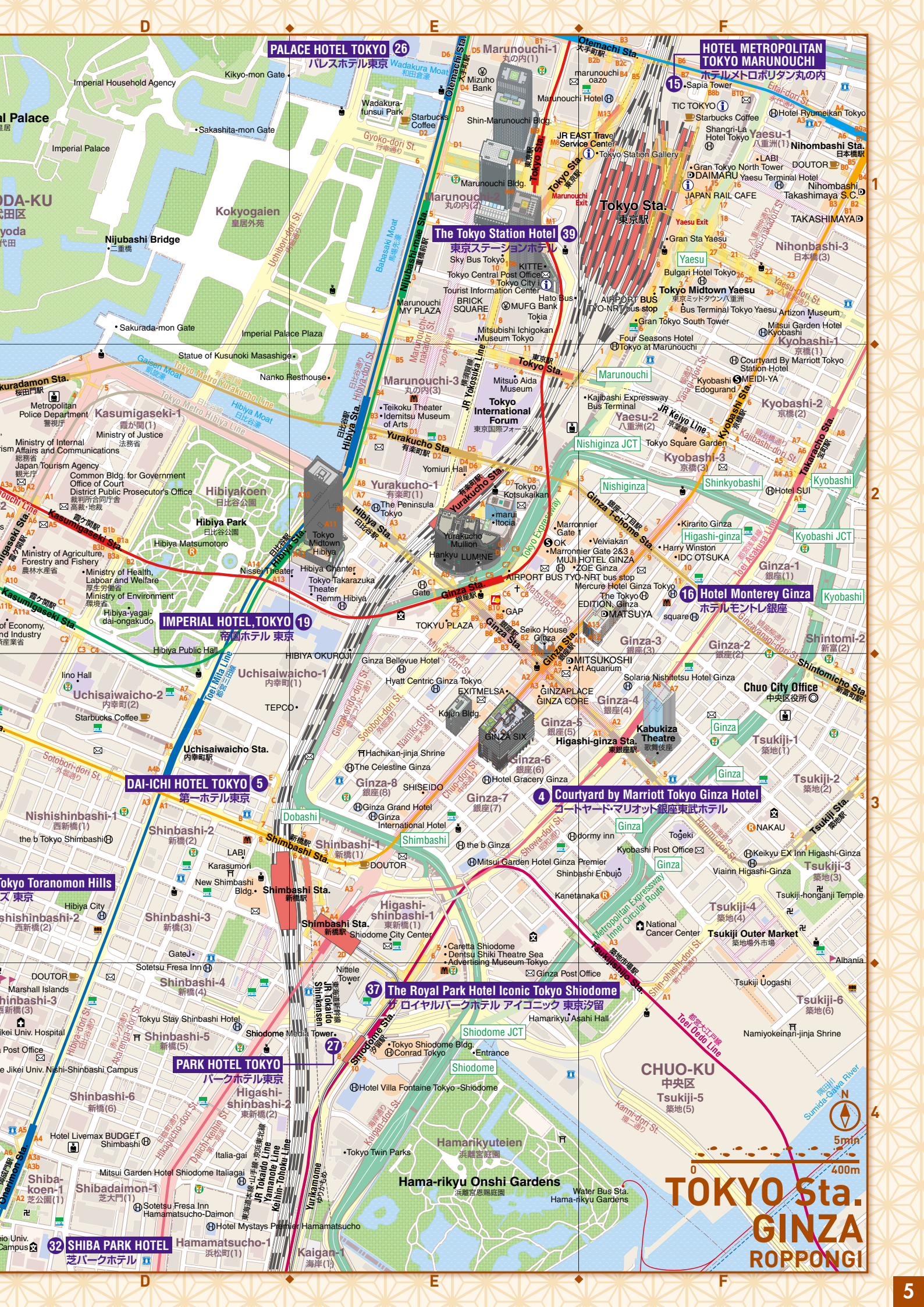












**PALACE HOTEL TOKYO 26**  
パレスホテル東京

**HOTEL METROPOLITAN TOKYO MARUNOUCHI**  
ホテルメトロポリタン丸の内

**The Tokyo Station Hotel 39**  
東京ステーションホテル

**IMPERIAL HOTEL TOKYO 19**  
帝国ホテル東京

**DAI-ICHI HOTEL TOKYO 5**  
第一ホテル東京

**Hotel Monterey Ginza**  
ホテルモンテ銀座

**4 Courtyard by Marriott Tokyo Ginza Hotel**  
コートヤードマリオット銀座東武ホテル

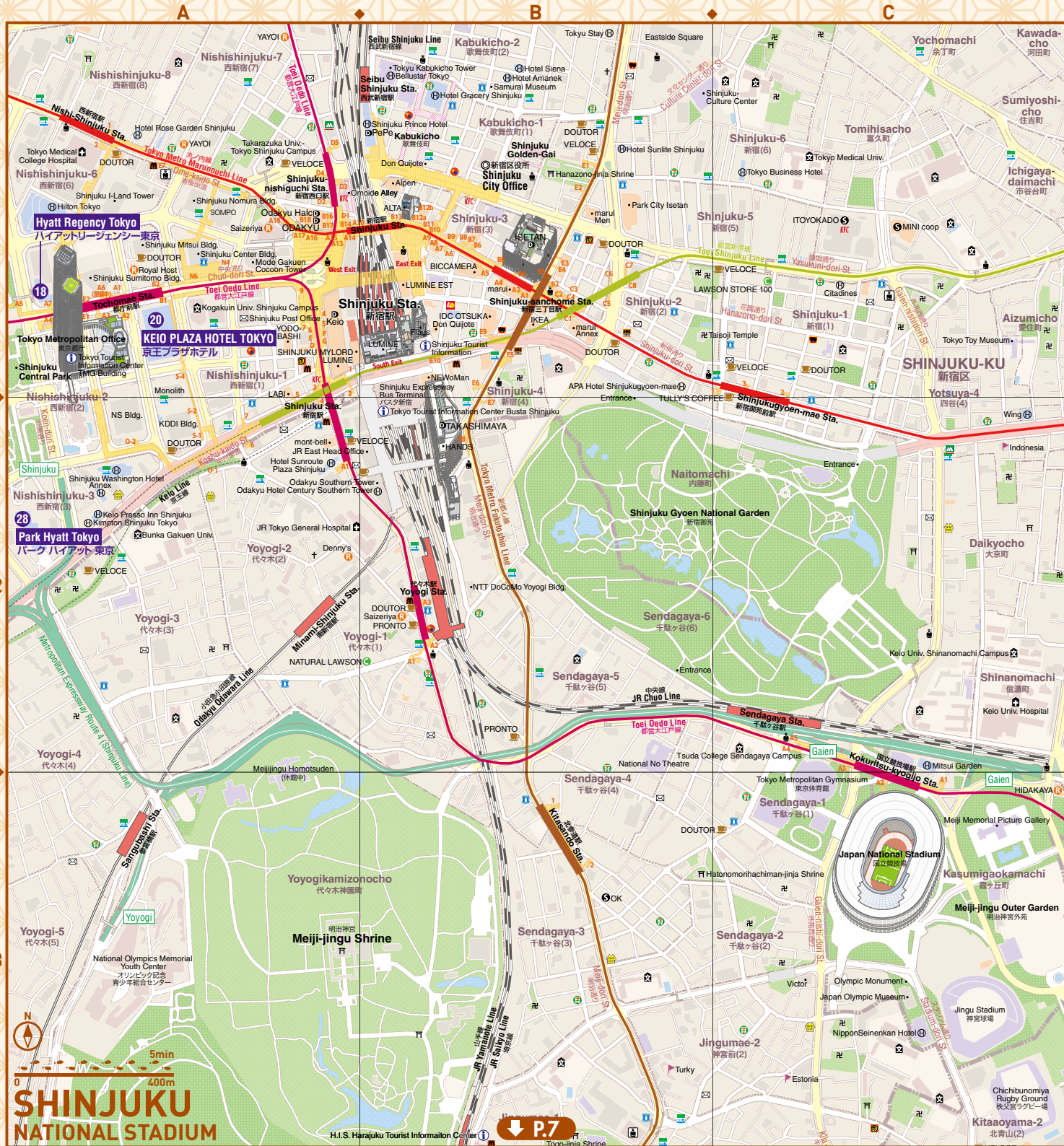
**37 The Royal Park Hotel Iconic Tokyo Shiodome**  
ザ ロイヤルパークホテル アイコニック 東京汐留

**PARK HOTEL TOKYO**  
パークホテル東京

**32 SHIBA PARK HOTEL**  
芝パークホテル

**TOKYO Sta. GINZA ROPPONGI**





## Map Legend

### Railway



### Road



### Japan Railways (JR)

JR線

### Private Railways

私鉄線

### Subways

地下鉄

### Expressway

高速・有料道路

### National Highway

国道

### Main Road

都県道・幹線道

### Other Road

一般道路

### Boundary



### Buildings



### Prefectural Boundary

都県界

### City Boundary

市区界

### Section and Cho Boundary

町界

### Town Boundary

丁目界

### Public Buildings

公共建物

### Commercial Buildings

商業建物

### Leisure Buildings

余暇建物

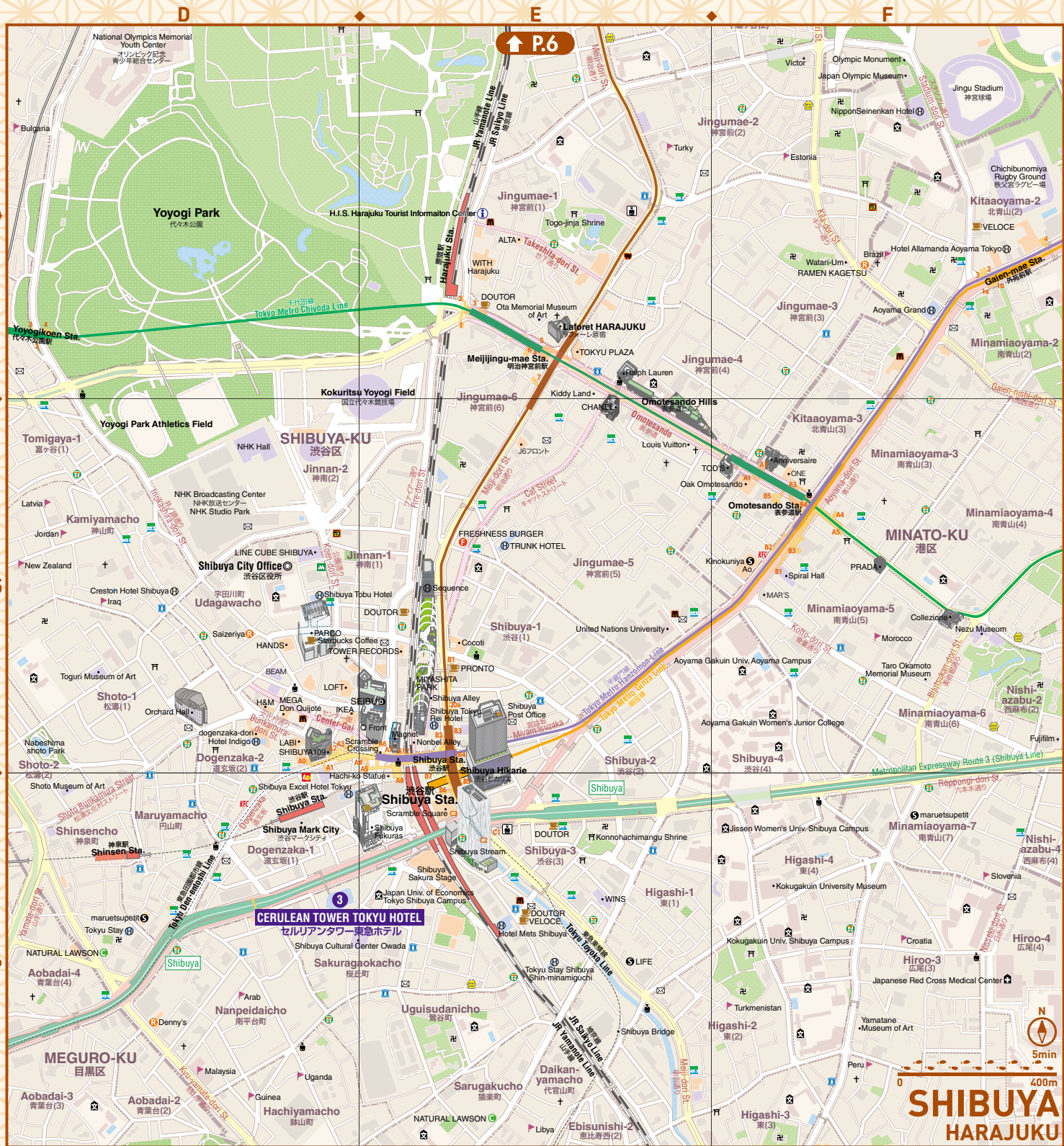
### Hotel Buildings

宿泊建物

### Other Buildings

一般建物





### Symbol

- Tourist Information Center**  
観光案内所
- City Office / Ward Office**  
市区役所
- Town Office**  
町役場
- Police Station**  
警察署
- Police Box**  
交番
- Post Office**  
郵便局
- School**  
学校
- Hospital**  
病院
- Embassy**  
大使館
- Restaurant**  
レストラン
- Cafe**  
カフェ
- Shinto Shrine**  
神社
- Church**  
教会
- Bank**  
銀行
- Department Store**  
デパート
- Supermarket**  
スーパー
- Hotel**  
ホテル
- Buddhist Temple**  
寺院

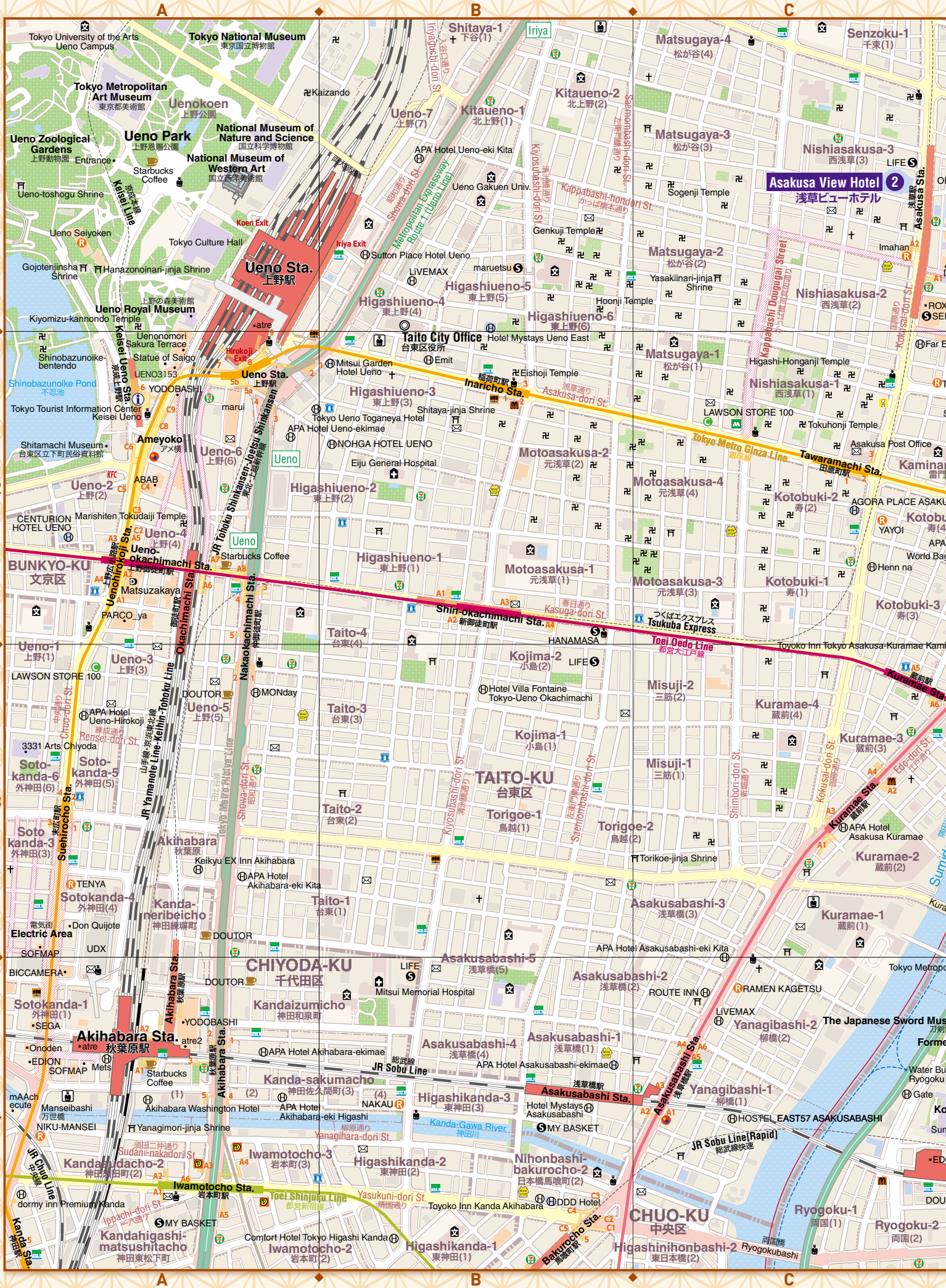
### Fast Food Restaurant

- McDonald's**  
マクドナルド
- Mos Burger**  
モスバーガー
- Kentucky Fried Chicken**  
ケンタッキー
- Mister Donut**  
ミスタードーナツ
- Lotteria**  
ロッテリア
- Yoshinoya**  
吉野家
- Matsuya**  
松屋
- Sukiya**  
すき家
- Other Fast Food Restaurant**  
その他

### Convenience Store

- Seven-Eleven**  
セブンイレブン
- Lawson**  
ローソン
- Family Mart**  
ファミリーマート
- Daily Yamazaki**  
デイリーヤマザキ
- Ministop**  
ミニストップ
- Poplar**  
ポプラ
- Other Convenience Store**  
その他

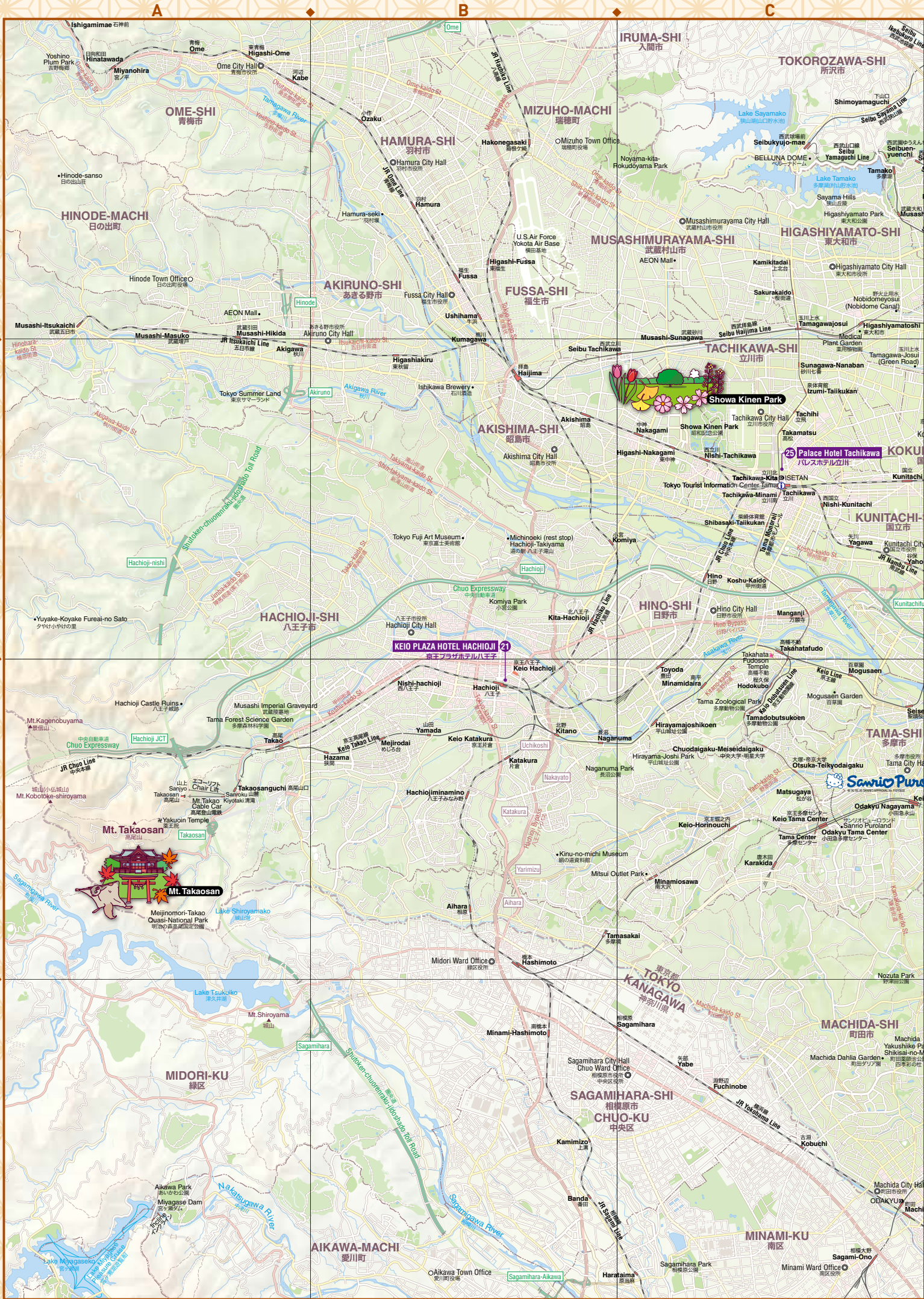




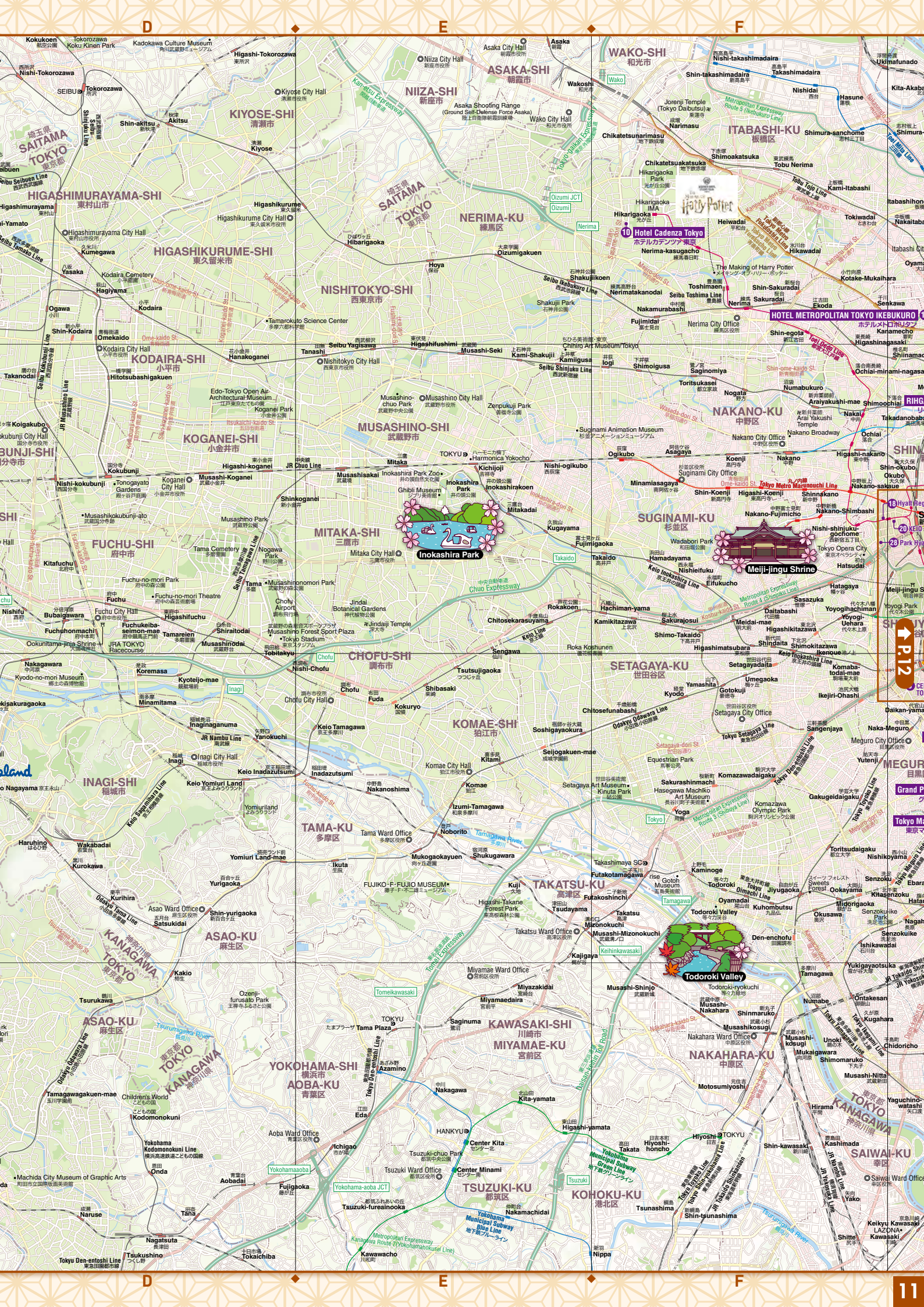




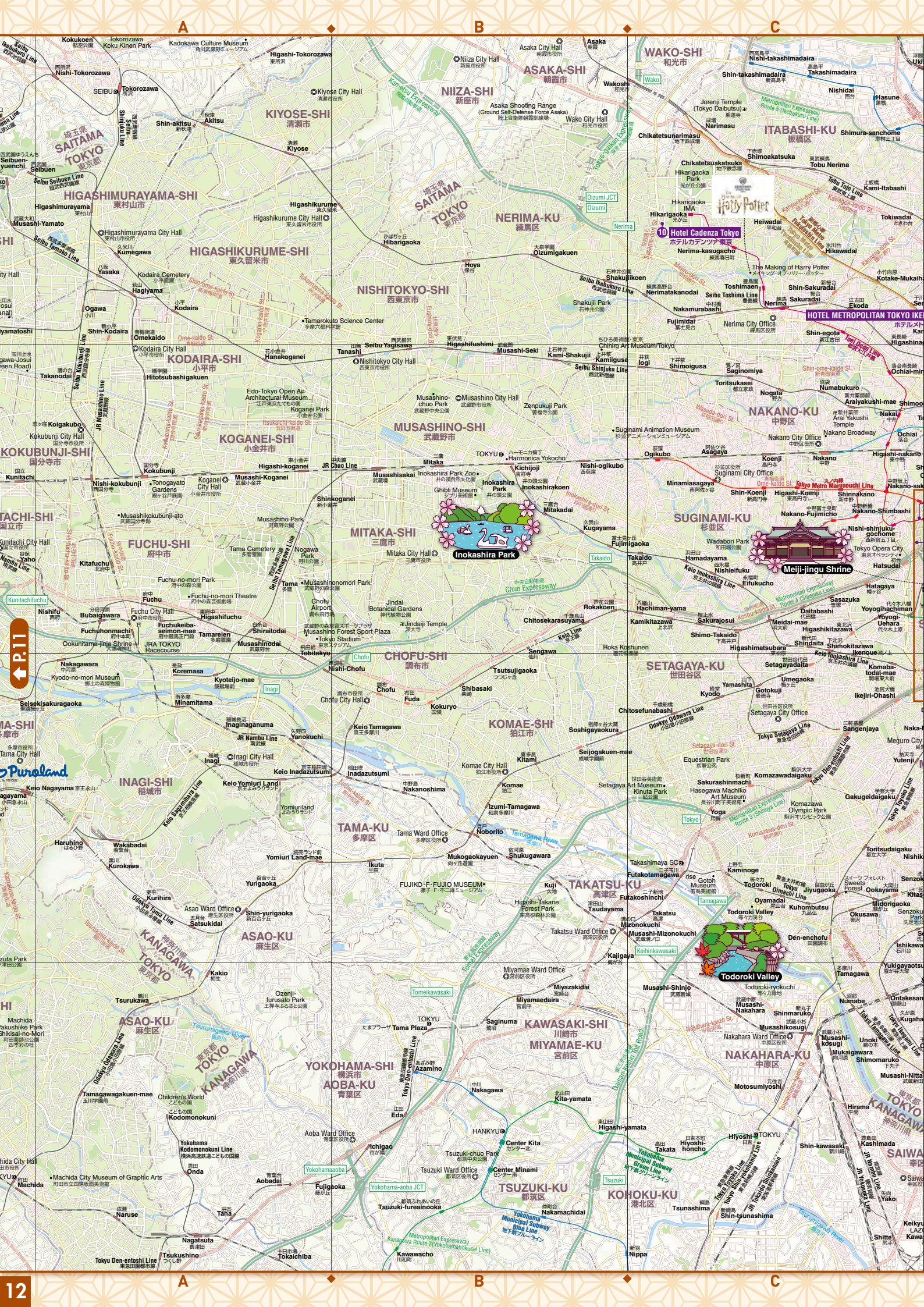




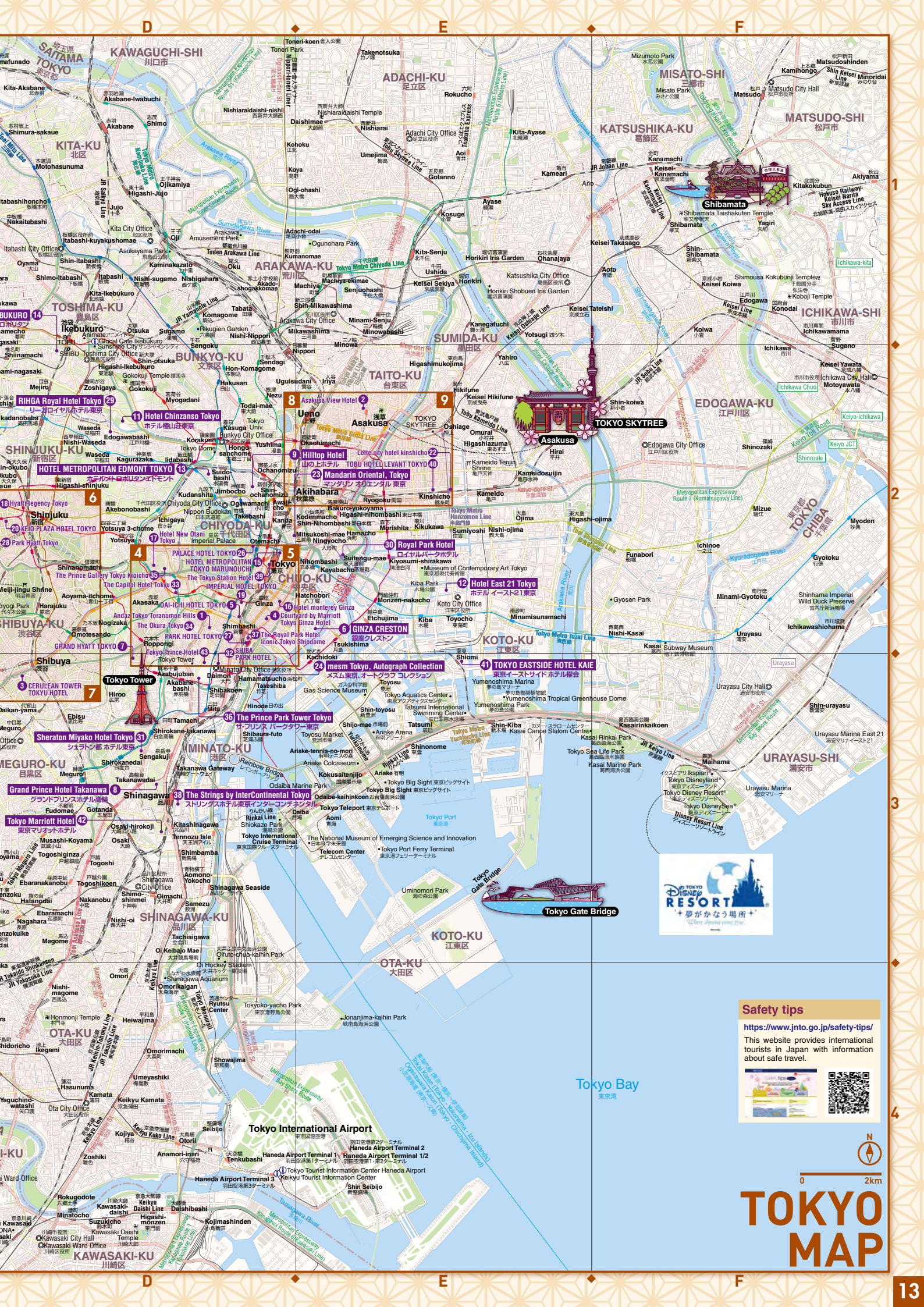












**Safety tips**  
<https://www.jnto.go.jp/safety-tips/>  
This website provides international tourists in Japan with information about safe travel.



**TOKYO MAP**



# Japan Hotel Association Tokyo Branch List

No	Name	Phone	Map
1	Andaz Tokyo Toranomon Hills	03-6830-1234	MAP 4 C-3
2	Asakusa View Hotel	03-3847-1111	MAP 8 C-1
3	CERULEAN TOWER TOKYU HOTEL	03-3476-3000	MAP 7 D-6
4	Courtyard by Marriott Tokyo Ginza Hotel	03-3546-0111	MAP 5 E-3
5	DAI-ICHI HOTEL TOKYO	03-3501-4411	MAP 5 D-3
6	GINZA CRESTON	03-5550-5700	MAP 13 E-2
7	GRAND HYATT TOKYO	03-4333-1234	MAP 4 A-4
8	Grand Prince Hotel Takanawa	03-3447-1111	MAP 13 D-3
9	Hilltop Hotel	03-3293-2311	MAP 13 D-2
10	Hotel Cadenza Tokyo	03-5372-4411	MAP 12 C-1
11	Hotel Chinzanso Tokyo	03-3943-1111	MAP 13 D-2
12	Hotel East 21 Tokyo	03-5683-5683	MAP 13 E-2
13	HOTEL METROPOLITAN EDMONT TOKYO	03-3237-1111	MAP 13 D-2
14	HOTEL METROPOLITAN TOKYO Ikebukuro	03-3980-1111	MAP 13 D-2
15	HOTEL METROPOLITAN TOKYO MARUNOUCHI	03-3211-2233	MAP 5 F-1
16	Hotel Monterey Ginza	03-3544-7111	MAP 5 F-2
17	Hotel New Otani Tokyo	03-3265-1111	MAP 4 A-1
18	Hyatt Regency Tokyo	03-3348-1234	MAP 6 A-1
19	IMPERIAL HOTEL, TOKYO	03-3504-1111	MAP 5 E-2
20	KEIO PLAZA HOTEL TOKYO	03-3344-0111	MAP 6 A-1
21	KEIO PLAZA HOTEL HACHIOJI	042-656-3111	MAP 10 B-3
22	Lotte city hotel kinshicho	03-5619-1066	MAP 9 F-4
23	Mandarin Oriental, Tokyo	03-3270-8800	MAP 13 D-2
24	mesm Tokyo, Autograph Collection	03-5777-1111	MAP 13 D-3
25	Palace Hotel Tachikawa	042-527-1111	MAP 10 C-2
26	PALACE HOTEL TOKYO	03-3211-5211	MAP 5 E-1
27	PARK HOTEL TOKYO	03-6252-1111	MAP 5 E-4
28	Park Hyatt Tokyo	03-5322-1234	MAP 6 A-2
29	RIHGA Royal Hotel Tokyo	03-5285-1121	MAP 13 D-2
30	Royal Park Hotel	03-3667-1111	MAP 13 E-2
31	Sheraton Miyako Hotel Tokyo	03-3447-3111	MAP 13 D-3
32	SHIBA PARK HOTEL	03-3433-4141	MAP 5 D-4
33	The Capitol Hotel Tokyu	03-3503-0109	MAP 4 B-2
34	The Okura Tokyo	03-3582-0111	MAP 4 C-3
35	The Prince Gallery Tokyo Kioicho	03-3234-1111	MAP 4 B-1
36	The Prince Park Tower Tokyo	03-5400-1111	MAP 13 D-3
37	The Royal Park Hotel Iconic Tokyo Shiodome	03-6253-1111	MAP 5 E-4
38	The Strings by InterContinental Tokyo	03-5783-1111	MAP 13 D-3
39	The Tokyo Station Hotel	03-5220-1111	MAP 5 E-1
40	TOBU HOTEL LEVANT TOKYO	03-5611-5511	MAP 9 F-4
41	TOKYO EASTSIDE HOTEL KAIE	03-3699-1403	MAP 13 E-3
42	Tokyo Marriott Hotel	03-5488-3911	MAP 13 D-3
43	Tokyo Prince Hotel	03-3432-1111	MAP 4 C-4



## Asakusa Culture Tourist Information Center

東京都台東区立浅草文化観光センター

Hours of Operation **9:00-20:00**

Holidays --

MAP **9** D-2



## TIC TOKYO

(Marunouchi Trust Tower North 1F)

Hours of Operation **10:00-19:00**

Holidays **New Year holidays**

MAP **5** F-1



## Glocal Cafe Ikebukuro

Glocal Cafe池袋

(Sunshine City Alpa 1F)

Hours of Operation **10:00-20:00**

Holidays --

MAP **13** D-1



## Tokyo City i Tourist Information Center

東京シティアイ 観光情報センター

(KITTE B1F)

Hours of Operation **8:00-20:00**

Holidays **Jan. 1 and legal inspection day**

MAP **5** E-1



## H.I.S. Harajuku Tourist Informaiton Center

エイチ・アイ・エス 原宿

ツーリストインフォメーションセンター

Hours of Operation **10:00-18:00**

Holidays **Dec. 31 to Jan. 1**

MAP **7** E-4



## Tokyo Tourist Information Center Busta Shinjuku

東京観光情報センター バスタ新宿

(Shinjuku Expressway Bus Terminal 3F)

Hours of Operation **6:30-23:00**

Holidays --

MAP **6** B-2



## JAPAN RAIL CAFE

ジャパンレールカフェ

(Gran Tokyo North Tower 1F)

Hours of Operation **8:00-16:00**

Holidays --

MAP **5** F-1



## Tokyo Tourist Information Center Haneda Airport

東京観光情報センター 羽田空港

(Terminal3 2F)

Hours of Operation **Open 24 hours a day**

Holidays --

MAP **13** D-4



## JR EAST Travel Service Center (Tokyo Station)

(Marunouchi North Gate)

Hours of Operation **7:30-20:30**

Holidays --

MAP **5** F-1



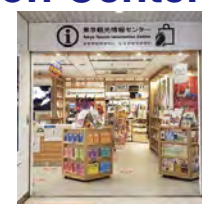
## Tokyo Tourist Information Center Keisei Ueno

東京観光情報センター 京成上野

Hours of Operation **8:00-18:30**

Holidays --

MAP **8** A-2



## Keikyu Tourist Information Center (Haneda Airport Terminal 3)

Hours of Operation **8:00-22:00**

Holidays --

MAP **13** D-4



## Tokyo Tourist Information Center TMG Building

東京観光情報センター 東京都庁

Hours of Operation **9:30-18:30**

Holidays **Year-end and New Year holidays**

MAP **6** A-1



## Shinjuku Tourist Information

新宿観光案内所

Hours of Operation **10:00-19:00**

Holidays **Dec. 29 to Jan. 3**

MAP **6** B-1



## Tokyo Tourist Information Center Tama

東京観光情報センター 多摩

(ecute Tachikawa 3F)

Hours of Operation **Monday to Saturday 10:00-21:30**

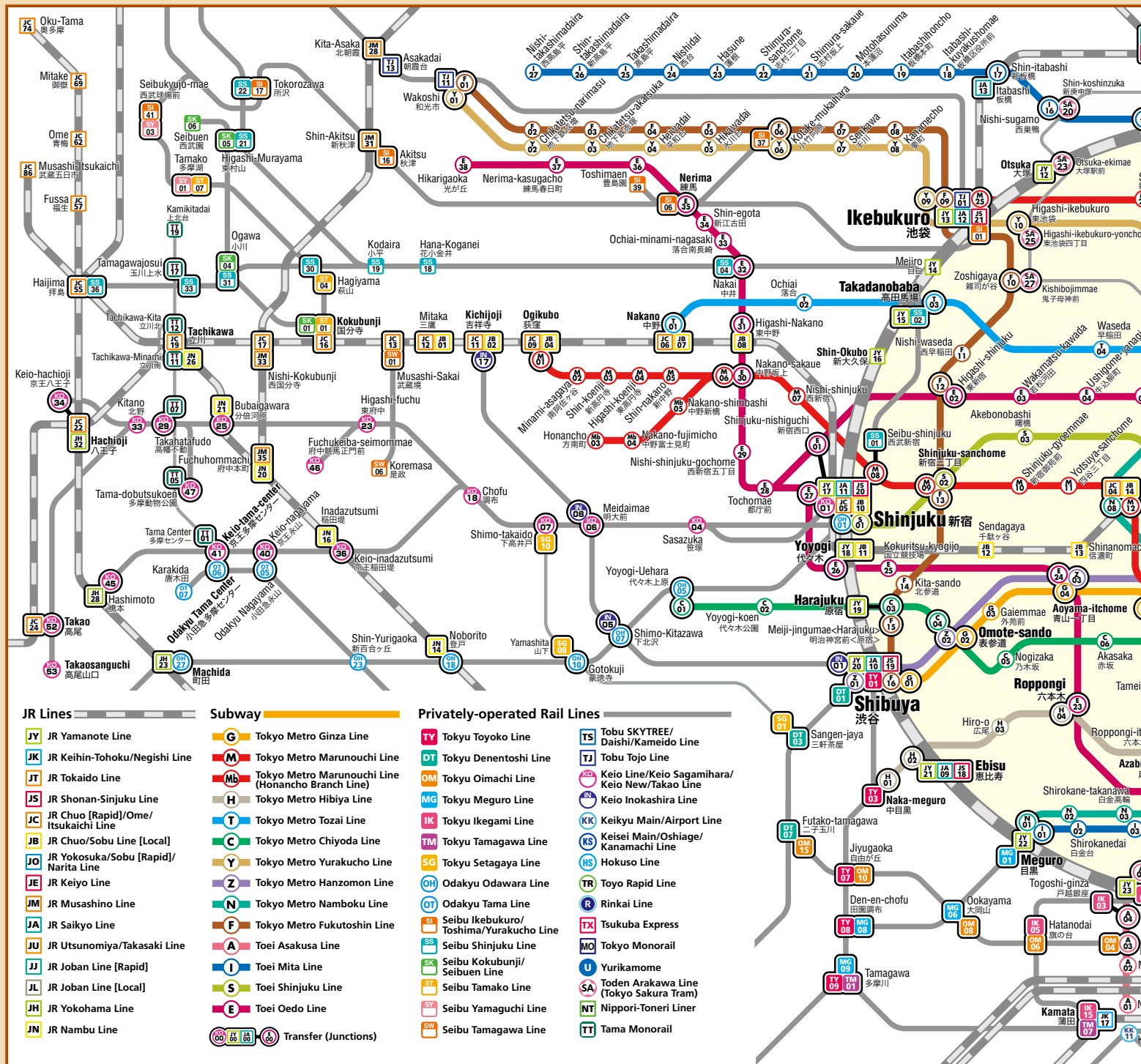
Holidays -- **Sundays and Public holidays 10:00-21:00**

MAP **10** C-2

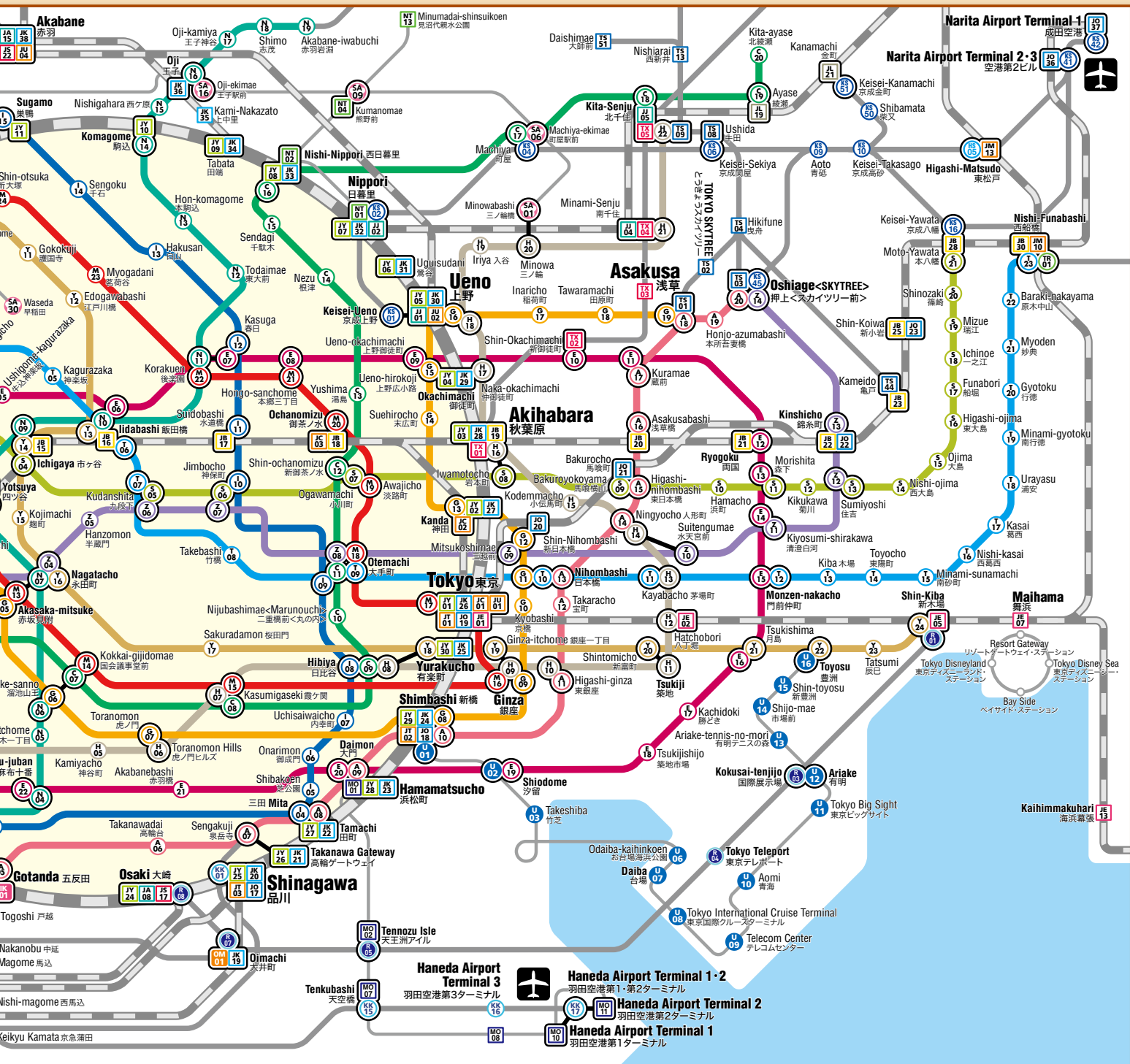




# TOKYO Railway Map












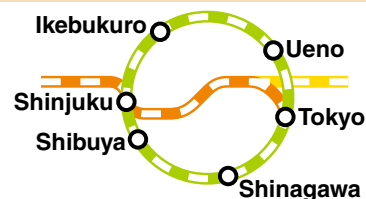
# Getting around Tokyo (for foreign tourists)

Please confirm beforehand in case of changes.



## RAILWAYS

### ■JR Lines

The JR rail lines that are used most often by foreign tourists are the Yamanote Line  and the Chuo/Sobu Line  . The Japan Rail Pass can be used for travel on these lines.



### ■Subway

Tokyo has an extensive subway system. There are 9 Tokyo Metro lines  and 4 Toei Subway lines .

### ■Privately-operated Rail Lines

Besides the JR lines, Tokyo is also served by around a dozen different private rail line operators. Most of these lines serve areas outside the central zone that is encircled by the Yamanote Line.

## TAXI



Vacant taxis can be hailed by raising your hand. You can tell if a taxi is vacant because if it's vacant, the light on the roof will be switched on.

■The minimum fare is **420 yen** for approximately the first kilometer. For travel beyond the first kilometer, the fare is **80 yen** per 233m.

## BUS

You should board a bus from the front entrance. Pay the fare shown below when boarding. To get off, press one of the buttons inside the bus to get the bus to stop at the next stop, and then exit from the rear entrance.

### ■Toei Bus

Fare (within Tokyo's 23 cities)

■Adult **¥210** Child **¥110**



## SIGHTSEEING BUSES

There is a wide range of sightseeing bus routes in Tokyo. Service on some routes is provided by open-topped double-decker buses.

### ■Hato Bus

Hato Bus is a bus tour provider that offers a wide range of sightseeing tours in the Tokyo area. The company also offers bus tours to nearby attractions such as Mt. Fuji and Nikko. Hato Bus also operates open-topped double-decker bus tours.



### ■Sky Bus Tokyo

Sky Bus operates three sightseeing routes using open-topped double-decker buses, as well as the Sky Hop Bus, a "Hop on, hop off" sight-seeing bus service.



## WATER BUSES

Sightseeing boats operate on the Sumida River. Audio commentary provides information about the sights that can be seen from the boat, the bridges it passes under, etc.

### ■TOKYO CRUISE

**Popular route:**

Asakusa → Hamarikyu  
→ Hinode Pier → Odaiba  
Seaside Park  
(8 departures per day)  
Closed: Every Tuesday



### ■Tokyo Mizube Cruising Line

**Popular route:**

Ryogoku → Asakusa →  
Takeshiba → Odaiba  
Seaside Park  
(5 departures per day)  
Closed: Every Monday,  
Tuesday



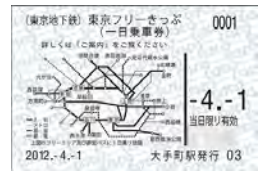


# Excursion Tickets

## Tokyo 1-Day Ticket (Tokyo Free Kippu) JR (JR East trains within Tokyo's 23 cities) Tokyo Metro Toei Subway Toei Bus

■Adult ¥1,600 ■Child ¥800 ■Validity Period: **One day**

One-day pass that provides unlimited use of the JR lines, Tokyo Metro lines, Toei Subway lines and Toei Bus services running through central Tokyo. **Where to buy:** JR Ticket Offices, reserved seat ticket vending machines and automatic ticket machines at Tokyo Metro stations and Toei Subway stations



## Common One-day Ticket for Tokyo Metro & Toei Subway Tokyo Metro Toei Subway

■Adult ¥900 ■Child ¥450

One-day ticket for unlimited use on the Tokyo Metro and Toei Subway. **Where to buy:** automatic ticket machines at Tokyo Metro stations and Toei Subway stations



## Tokyo Subway Ticket Tokyo Metro Toei Subway

■24hours:Adult ¥800 Child ¥400 ■48hours:Adult ¥1,200 Child ¥600 ■72hours:Adult ¥1,500 Child ¥750

Economical tickets for foreign travelers visiting Japan. Foreign nationals wishing to buy an economical ticket will need to show their passport. **Where to buy:** Commuter Ticket Counter (Ueno Station, Ginza Station, Shinjuku Station, Ikebukuro Station, Iidabashi Station, Takadanobaba Station, Meiji-jingumae Station, Otemachi Station), selected hotels (for purchase by guests only), selected foreign tourist information, airports, etc.



## Tokyo Metro 24-hour Ticket Tokyo Metro

■Adult ¥600 ■Child ¥300

24-hour ticket that provides unlimited use of the Tokyo Metro. **Where to buy:** automatic ticket machines at Tokyo Metro stations



## Toei One Day Pass (Toei Marugoto Kippu) Toei Subway Toei Bus

■Adult ¥700 ■Child ¥350 ■Validity Period: **One day**

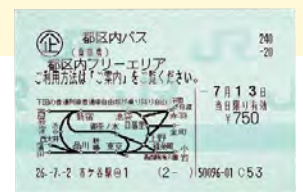
One-day pass that provides unlimited use of the Toei Subway lines, Toei Bus services, Toden Arakawa line, and Nippori-Toneri Liner service, which are run by the Tokyo Metropolitan Government. **Where to buy:** automatic ticket machines at Toei Subway stations, on Toei buses, etc.



## Tokyo Metropolitan District Pass (Tokunai Pass) JR

■Adult ¥760 ■Child ¥380 ■Valid Period: **One day**

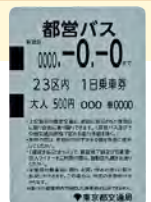
One-day pass that provides unlimited use of JR local trains within Tokyo's 23 cities. **Where to buy:** JR Ticket Offices and reserved seat ticket vending machines within Tokyo's 23 cities



## Toei Bus 1day Pass Toei Bus (Only in Tokyo's 23 cities)

■Adult ¥500 ■Child ¥250

One-day pass that provides unlimited use of Toei Bus services within Tokyo's 23 cities. The deposit can be recovered if the pass is used at least three times. **Where to buy:** On Toei buses, etc.



## Yurikamome Line One-Day Pass Yurikamome

■Adult ¥820 ■Child ¥410

One-day pass for unlimited use of the Yurikamome Line. **Where to buy:** Yurikamome Line automatic ticket machines





# Transportation Between the Airport and the Main Locations in Tokyo

