

English

# Musashino City Visitor's Guide

Kichijoji Area

North Mitaka Area

Musashisakai Area

vol.04



## Welcome to Musashino city!

Since ancient times, areas surrounding Inokashira Pond has been filled with pure spring water. Its remains reveal that this was where people gathered to search for rich harvest and prey throughout the old Stone Age to the Jōmon period. The city started founding in the early Edo period (17th century) as a massive fire occurred in downtown Tokyo, forcing a temple called “Kichijoji” as well as the residents of the town to evacuate. In search of a new place, they decided to settle down in areas around Inokashira Pond. The city was named after that very temple and has been known since as “Kichijoji”. As people settled, they gradually developed and formed four villages within the area. With the opening of railways in 1899, the city starts to grow. In 1917, Inokashira Park opened as the first suburban park in Japan and became a very popular destination for people to visit. Also due to the Great Kantō Earthquake in 1923, many residents from downtown Tokyo were encouraged to move to this area which helped push forward its modernisation and development as a city. During the time of WWII, Japan’s prominent aircraft and engine manufacturer Nakajima Aircraft Company establishes an engine factory on their Musashi production site. Known to be one of the best engine factories in the whole of East Asia, it easily became a target of the bombing and the area suffered severe damages. However, the survivors of the war continued to work together in bringing the city back. Now, the city is livelier than ever, attracting many residents as well as visitors with its unique shops and restaurants, and has also been a big inspiration to fields of literature, art, animation, and manga. Since old times, Musashino city has continued to attract people, bringing happiness and smiles to everyone.

Please use this booklet as a guide and enjoy walking around the city.



### Map Symbols

- Information
- Town Information Office
- Police Box Post office
- Foreign Currency Exchange
- Public Bath Shrine Temple
- Parking lot (Fits more than 150 cars)
- Bicycle parking Lot (Fits more than 400 bikes)
- Coin Lockers

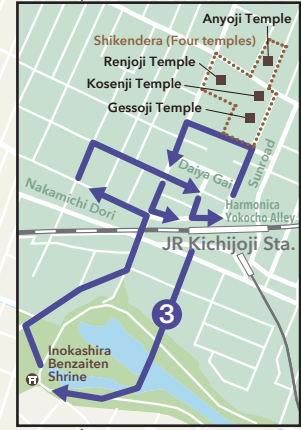
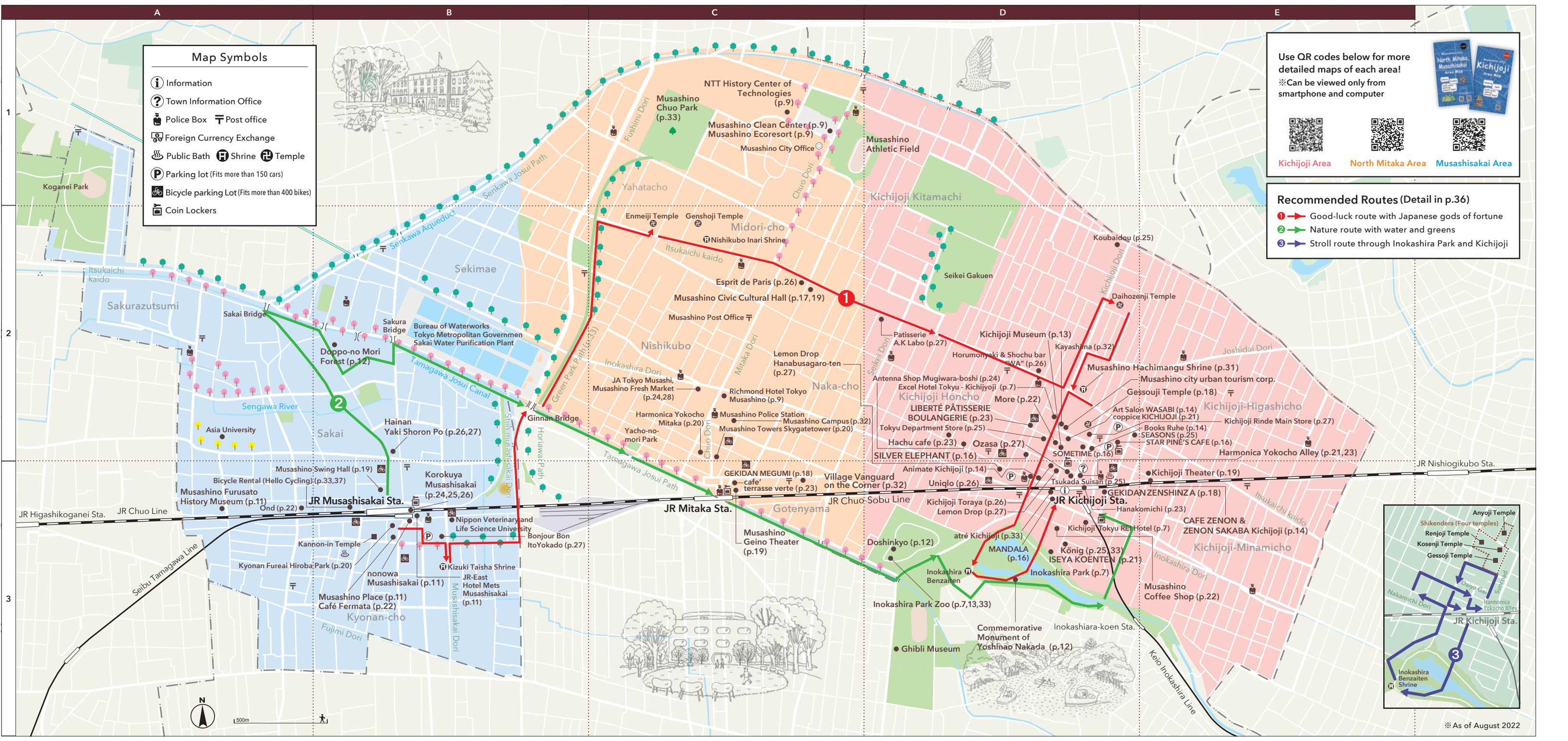
Use QR codes below for more detailed maps of each area!

※Can be viewed only from smartphone and computer

Kichijoji Area North Mitaka Area Musashisakai Area

### Recommended Routes (Detail in p.36)

- ➡ Good-luck route with Japanese gods of fortune
- ➡ Nature route with water and greens
- ➡ Stroll route through Inokashira Park and Kichijoji







Musashino city, a place where people gather to enjoy.....	4
<b>Special edition: Areas full of Originality</b>	
Kichijoji Area.....	6
North Mitaka Area .....	8
Musashisakai Area .....	10
<b>Exciting! MUSASHINO City</b>	
1. Musashino-related People of Culture .....	12
2. Manga / Anime .....	14
3. Music .....	16
4. Halls and Theaters .....	18
5. Marche.....	20
6. Café .....	22
7. Souvenirs.....	24
8. Farmers Markets .....	28
9. Events .....	30
10. Different ways to enjoy! "One-Day Trips." .....	32
<b>Visitor's Information</b>	
Bus Tables .....	34
Recommended Routes .....	36
Available Services Car Rentals, Bicycle Rentals, Coin Lockers, Currency Exchange, Stroll Rentals	
Free Wi-Fi .....	37

※ The information provided is as of September, 2021 (price includes tax). Regular holidays exclude summer vacation and the year-end and New Year holidays. In addition, business hours and regular holidays are subject to change.

※ Currently, various infectious disease countermeasures are being taken at each facility, store, and event. Please follow the instructions of each facility, store, and operation when using.



**Musashino city**, a place where people gather to enjoy

Not only in Japan but any city that attracts visitors and tourists usually has its own traits; whether it be the history, literature, music, art, animation, beautiful nature, tasty food and sweets, unique shops, sports, scenery from a movie... the list goes on. Musashino city, with its wide, diverse range of traits and attractions, it is almost impossible to describe the city's characteristic in just one word. It is a place filled with water and nature, enriching people's lives since ancient times. Also one of the busiest shopping districts in Tokyo. Old narrow streets that take us back to the

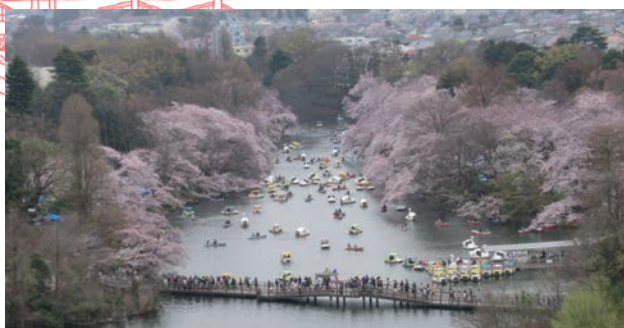
post-war period, as well as modern constructions including libraries and theatres. There are small, local farmers market, and then there are restaurants and grocery stores that serve all kinds of foods from around the world. Parks where families can enjoy nature, but also bars with some jazz music for an adult nightlife. Old fashioned coffee shops where elderlies go to relax, and cutesy cafes where the youngsters hang out. Its sceneries have also continued to inspire worlds of literature, manga, and anime. There are both globally expanding businesses and

local community-based businesses that coexist. Perhaps, it is a city where all aspects of life exist. As indescribable as it is, that in fact, is Musashino city. Its fun and beauty can only be felt by actually visiting the place. People fall so deeply in love with the city that Kichijoji area has even been ranked top as “the most desirable place to live in”. There is something about the Musashino city that makes you want to come back. So, what really is so great? Let’s go discover the secret and find your own way to enjoy the city to its fullest.



# Kichijoji Area

Only 15 minutes to Shinjuku and Shibuya. But no need to go downtown because you can find everything in Kichijoji. Fashion, food, Japanese culture, you name it! Even a big park too. That's how awesome Kichijoji is!



Inokashira Park



Motomachi Street



Kichijoji Station North Exit



Sculpture Museum



Kichijoji Music Festival



Statue of Hanako

## About the area

The area consists of various attractions such as fashion, gourmet, culture as well as nature. What makes this area so convenient is that you can find all different kinds of activities, whether it be eating, shopping, or even relaxing in nature, within just 300 meters from the station. This is one of the biggest reasons as to why this city has been ranked as one of the most "desirable city to live in" for so many years.

Not only that but its unique culture so full of originality has always been a big inspiration to many creators in different fields such as anime or music, making the area somewhat the core of Japanese subculture.

## History

Its development as commercial and residential area started sometime between the Edo and the Meiji period. One of the biggest factors in its growth was when a huge fire incident occurred in the central part of Tokyo which forced residents as well as the town's temple, then called "Kichijoji", to evacuate. In search of a new place to live, people started settling along Itsukaichi Kaido Road and named the area after their temple.

Later in 1899, Kichijoji Station first opened which made a significant push to area's development as a city. Also in 1923, due to the Great Kanto Earthquake, many people moved out of central Tokyo and settled around this area which urged urbanization. After WWII, an underground economy started rising around the station which is also what helped the city become the big shopping district it is today.

## Recommended Spots



↑ Entrance of Sun Road.  
→ Nakamichi Dori (right) and Dia-Gai (left).

## Within the walking distance from the station! Shōtengai

Not only big department stores but Shōtengai, meaning Japanese shopping streets, are also what makes Kichijoji so attractive. There is the 300 meter-long shopping arcade called "Sun Road" right in front of Kichijoji Station North exit. There is also "Daiya Gai", a street where popular local delis gather, and then "Harmonica Yokocho", an narrow alley which takes you back to old traditional Japan. There's more. "Heiwa Dori", a street with beautiful trees to accompany you with, and "Nakamichi Dori" where you can find a lot of unique, original stores. They are all close from each other yet each has its own type of atmosphere.

The stores in these streets, along with the big shopping malls, are what supports the local community while attracting visitors from many places.

## Japan's very first suburban park, opened about 100 years ago Inokashira Park

An urban oasis surrounded by houses and shopping streets. Park's pond is also famous for its swan-shaped boats that offer families and couples a relaxing ride through the scenery. The park also has many facilities where people of all ages can enjoy.

MAP D-3 | 1-18-31, Gotenyama, Musashino-shi Phone: 0422-47-6900  
Open all year around. [Access] 5 minutes walk from Kichijoji Station Park Exit



Beautiful trees  
will help you  
relax!



Also known for cherry blossoms  
and autumn leaves.

## A zoo in one corner of Inokashira Park!

## Inokashira Park Zoo

2022 marks the park's 80th anniversary!



You can observe the natural behavior of squirrels living in the forest.

Inokashira Park Zoo is divided into a zoo area and an aquatic life park, together covering roughly 35,000 square meters, exhibit about 170 species and 4,000 animals. The park contains a exhibition hall, sculpture museum and an aquatic life house, Japanese garden, among other attractions. In "Squirrel Trail", it is attractive to be able to see Japanese squirrels up close by entering the breeding cage.

MAPD-3 | 1-17-6 Gotenyama, Musashino-shi Phone: 0422-46-1100 Open: 9:30AM-5PM (Inokashira Park Zoo is divided into a zoo and an aquatic life park. After 4PM visitors can no longer go between the zoo and the aquatic park.) Closed on Mondays. ※ It may change. Please refer to the HP calendar for ex act details.

## Accommodations

## KICHIJOJI EXCEL HOTEL TOKYU



MAP D-2 | 2-4-14, Kichijoji-honcho, Musashino-shi [Access] 5 minutes walk from Kichijoji Sta. North Exit  
\* Opening from Oct. 28, 2022  
<https://www.tokyuhotels.co.jp>



## Only two minutes from the station! Kichijoji Tokyo REI Hotel

MAP D-3 | 1-6-3, Kichijoji-minamicho, Musashino-shi Phone: 0422-47-0109 [Access] 2 minutes walk from Kichijoji Station Park Exit





# North Mitaka Area

Tamagawa Josui Canal, along with a beautiful walking trail, runs between Musashino city and its next-door neighbor Mitaka city. A lot of relaxing sceneries as well as municipal government offices and cultural/sports facilities. It is where the heart of Musashino city lies.



Tamagawa Josui Canal, "Green Road"



Musashino Chuo Park



Monument of Kunikida Doppo and her poem



Musashino Municipal Athletic Stadium



Mitaka Station North Exit

## About the area

Major facilities that support residents' everyday lives are concentrated in this area; such as the city hall, the police station, health care center, cultural hall, central library etc. While there are many major companies, restaurant chain headquarters, animation studios, etc., there are places where you can relax in the lush greenery, and there is also one side of a quiet residential area. At the rotary in front of the station (the north exit of Mitaka Station), which can be said to be the entrance to the city, the world federation peace statue of Seibo Kitamura, the first honorary citizen of Musashino-shi, welcomes visitors.

## History

When discussing the history of this area, the Nakajima Aircraft Musashi Factory cannot be left out. Until the conclusion of World War II, the factory was known for making the largest military aircraft engines in East Asia. From 1938 until the end of the war, the area between what is currently Midori-cho and Yawata-cho was occupied by the factory. In 1941, Mitaka Station North Exit was constructed, due to the factory workers' help. Local residents have gotten used to what remains of the factory today as Musashino Chuo Park and the City Hall, which has been altered from its original state.

## Recommended Spots

### Hidden fun for families Musashino Clean Center

A cutting-edge plant for waste management. They also offer tours that do not require pre-reservations. There, you can watch the disposal process through a huge glass window and walk through the floor to learn how waste is being managed. There are occasional events hosted such as "Eco-Marche" and more.

MAP C-1 | 3-1-5, Midori-cho, Musashino-shi Phone: 0422-54-1221 Open: 10AM-5PM Closed on Tuesdays, National Holidays. (Open if Monday is a national holiday, closed on Wednesday of the week.) ※Rooftop tour and group tour require reservation. [Access] 25 minutes walk from Mitaka Station North Exit



↑ Won the "GOOD DESIGN AWARD" for public facilities in 2017.

→ Rooftop garden fertilized by compost.



Contributing to the achievement of SDGs from the perspective of the environmental field

### Musashino Ecoresort

An environmental awareness facility that was reused by renovating a part of the old facility due to the rebuilding of the clean center. Based on global warming, you can think, learn, and experience the environment such as garbage, resources, energy, greenery, water cycle, and biodiversity.

MAP C-1 | 3-1-5, Midori-cho, Musashino-shi Phone: 9:30AM-5PM Closed on Tuesdays, National Holidays. (Open if Monday is a national holiday, closed on Wednesday of the week.) [Access] 25 minutes walk from Mitaka Station North Exit

↑ Opened in November 2020.

→ There are also "Manufacturing Workshop" and "Hall / Cafe Space" in the hall.



Receive newly made paper crafts as a thanks for responding to our survey!



Learn all about NTT's telecommunication technology and history!

### NTT History Center of Technologies

This facility allows you to learn about the history of telecommunication and how the technology developed throughout the years, from telegrams and telephones, to what we now know as internet and cellphones. They offer two kinds of tours: one focusing on history and the other on technology. You can also explore on your own, but the tours are definitely recommended.

## Accommodations

### Away from the city and relaxing. Richmond Hotel Tokyo Musashino

MAP C-2 | 2-4-1 Naka-cho, Musashino-shi Phone: 0422-36-0022 [Access] 8 minutes walk from Mitaka Station North Exit







# Musashisakai Area

A cozy residential area where families and students gather, but it has also been changing rapidly in the last few years particularly due to the development of Musashisakai Station. Many shops and restaurants are concentrated around the station which continue to increase. There are also cultural facilities as well as many universities, also making it known as a very academic, sophisticated area.



Musashisakai Station



Doppo no Mori forest



Agriculture Fureai Park



Skip Street (shopping street)



Musashino Swing Building



Kizuki Taisha Shrine



## About the area

Musashisakai area is where convenience and beautiful nature are both combined. Inside and around the station offers many stores such as "nonowa" or "ItoYokado" where you can find all kinds of items according to your need. There are also many cultural facilities such as Musashino Place or Musashino Swing Hall, as well as universities like Asia University or Nippon Veterinary and Science University, giving a very academic atmosphere to the area. Just a little bit further from the station and it is full of nature where you can find Tamagawa Josui Canal as well as Sakaisanya Green Area (Doppo-no Mori Forest). Red peppers, local specialty, are cultivated in this area.

## History

This was where a house of Matsudaira clan used to exist in Edo period. After completing the construction of Tamagawa Josui Canal, the land where the house used to exist was newly developed into a rice field and named after the surname of clan's vassal "Sakai". In 1889, "Sakai Depot" was opened which is what later became the Musashisakai Station we see today. As the area developed, many educational institutions started to concentrate which is when it started becoming a city of academia. After the war, it was largely developed as a residential area and grew as a suburban commuter town.

## Recommended Spots



↑ Connects the South and the North side of the station.  
 ← "Korokuya" sells "Musashino Premium" (Page 24) and more.

## Learn and relax Musashino Place

Musashino Place is a public facility which functions primarily as a library but also provides spaces for lifelong learning, civic events as well as youth activities. It has been supporting the life and the activities of people of all ages, bringing the community together throughout the years. Its comfortable yet modern design has also been awarded by the Architectural Institute of Japan in 2016. It also has a cozy café on the 1st floor.

MAP B-3 | 2-3-18, Kyonan-cho, Musashino-shi Phone: 0422-30-1905 Open: 9:30AM-10PM Closed on Wednesdays (\*a holiday on a weekend, then closing will move to the following weekday). [Access] One minute walk from Musashisakai Station South Exit

Plenty of shops inside and by the station!  
**nonowa Musashisakai • NONOMICHI**

A shopping facility opened in 2013 after the elevation of the station was completed. It includes supermarkets, pharmacy, grocery stores as well as cafe and restaurants. Try visiting Korokuya market where they sell locally grown vegetables and premium products of Musashino city (Page 24~).

MAP B-3 | nonowa Musashisakai, 2-1-28, Kyonan-cho, Musashino-shi Open hours may vary depending on stores. No regular closing days. [Access] Connected from Musashisakai Station



Please refer to P. 24 for more information about cafes on the first floor.



↑ The landmark of Musashisakai  
 → All the floors have a very bright, welcoming atmosphere



## Know the history and make walking around the city more fun! Musashino Furusato History Museum

This is where all the knowledge and wisdom of Musashino city can be found. It also functions as museum and national archives which is rather rare in the country. This facility offers the opportunity to learn about the evolution of Musashino city from the primeval age to now as well as about the community through its permanent exhibition and a themed exhibition hosted four times a year.

## Accommodations



Conveniently located next to the station!  
**JR-East Hotel Mets Musashisakai**

MAP B-3 | 2-1-8 Kyonan-cho, Musashino-shi 0422-32-5111 [Access] 1 minute walk from Musashisakai Station South Exit



The museum collects, maintains and exhibits valuable historical/cultural material.

MAP A-3 | 5-15-5, Sakai, Musashino-shi Phone: 0422-53-1811 Open: 9:30AM-5PM Closed on Fridays and holidays. [Access] 12 minutes walk from Musashisakai Station North Exit ※ For bus, get off at a stop called "Musashino Museum of History" on MuBus (Sakai West Route)





Exciting! **MUSASHINO City**

# 1. Musashino-related People of Culture

Writers, composers and critics who had connections to the city

Known for its well-preserved nature, Musashino city had come to be an very inspirational environment for many artists, poets and writers from the end of the 19th century to the present. It was where one of Japan's most well-known writers and artists gathered to create their work. There are monuments that represent the ties they had with this city, so take a look as you walk.

At the foot of Sakura Bridge and Mitaka Station North Exit, you will find a monument of Kinikida Doppo inscribed with his poem.



← Monument at Mitaka Station North Exit.

A novelist in the late 19th century. He loved the scenery of the Musashino area.

## Doppo Kunikida

Doppo who was also a naturalist used to portray the beauty of Musashino's scenery in his works. Senya Koen Park, one of the few forests he loved, still remains in the city and is now known as "Doppo-no Mori Forest" (Doppo's forest).

Doppo no Mori Forest

**Musashisakai** MAP B-2 | 4-5 Sakai, Musashino-shi [Access] 10 minutes walk from Musashisakai Station North Exit



Composed "Musashino Citizen's Song".

Yoshinao Nakada lived in the Mitaka and Musashino area after the war. One of his most famous songs was born while he was taking a walk through the area. His songs have long been loved by Japanese people, and there is also a monument of him inscribed with music notes of his work.

**Kichijoji** of Yoshinao Nakada

MAP D-3 | In Inokashira Park (1-18-31 Gotenyama, Musashino-shi) [Access] 5 minutes walk from Kichijoji Station Park Exit



Poet who was based in Kichijoji

## Ujo Noguchi

Ujo Noguchi was regarded as one of the three major lyricists of Japanese children's songs. Ujo spent about 20 years of his life in Kichijoji. His study, referred to as "Doshinkyō", has now been relocated to Inokashira Park Zoo and is open to the public.

Doshinkyō (Ujo Noguchi's study)

**Kichijoji** MAP D-3 | 1-17-6 Gotenyama, Musashino-shi (In Inokashira Park Zoo) [Access] 10 minutes walk from Kichijoji Station Park Exit



There is also a monument of him at the western bank of Inokashira Pond.



Named the Harmonica Yokochō in Kichijoji

## Katsuichirō Kamei

A Japanese literary critic who lived in Musashino city. He was close to novelists including Osamu Dazai. It is said that he named the alley known as "Harmonica Yokochō" in Kichijoji simply for the fact that the area resembled the mouthpiece of a harmonica.



A poet who helped protect city's nature

## Mitsuharu Kaneko

Kaneko was a poet known for his rebellious spirit. In 1966, he established an organization to protect the Tamagawa Josui Canal with his other poet friends, working to preserve nature's city.



**Kichijoji**

While keeping the nostalgic atmosphere, their culture also keeps evolving.



**North Mitaka**

**Musashisakai**

Tamagawa Josui Canal was recognized as a national historic landmark in 2003.



Yoshimoto Kogyo

A Japanese famous comedian and an Akutagawa Award-winning novelist

## Naoki Matayoshi

Starting out as a comedian in his 20s, Matayoshi lived in a tiny apartment with no bath. His humble life in Kichijoji is reflected in his award-winning novel "Hibana" where a lot of the area's familiar scenery such as Musashino Coffee Shop is being depicted.



"Hibana", the award-winning novel of Matayoshi

Musashino Coffee Shop (P.22) also shows up in the book!

## Column

Learning more about writers, composers, and critics who had strong ties to the city

There are many spots in Musashino city where you can see and feel the connection Japanese artists had with the area. Kichijoji Art Museum, for example, carries exhibition rooms dedicated to two world famous sculptors: Yozo Hamaguchi and Hideo Hagiwara who also loved the city of Musashino. In Inokashira Park Zoo's sculpture exhibitions, there is a relocated studio of Seibo Kitamura who made the peace statue in Nagasaki. Paying attention to those details may be another way to enjoy the city.



**Kichijoji** MAP D-2 | cippice KICHIOJI Building-A 7F, 1-8-16 Kichijoji-honcho, Musashino-shi Phone: 0422-22-0385 Open: 10AM-7:30PM Closed on last Wednesday of every month. [Access] 5 minutes walk from Kichijoji Station North Exit



**Kichijoji** MAP D-3 | 1-17-6 Gotenyama, Musashino-shi (Inside Inokashira Park Zoo) Phone: 0422-46-1100 Open: 9:30AM-5PM (Entry until 4PM) Closed on Mondays (If it falls on a holiday, closing will be moved to the following weekday). [Access] 10 minutes walk from Kichijoji Station Park Exit

More than 2,500 art pieces stored Kichijoji Museum

Works of artists who had ties to Musashino city, as well as other Japanese artists, are being exhibited at this museum. It also functions as a civic gallery. Entrance fee for the regular exhibition is 100yen, and for special exhibition it is 300yen.

Find the studio of Seibo Kitamura Inokashira Park Zoo Sculpture Exhibition

Sculpture museum inside the Inokashira Park Zoo. The prototype of the famous peace statue in Nagasaki is also being displayed. Entrance fee is 400yen (including both the museum and the park zoo).



Exciting! MUSASHINO City

## 2. Manga / Anime

### Anime related Cafes and Shops



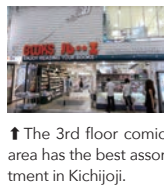
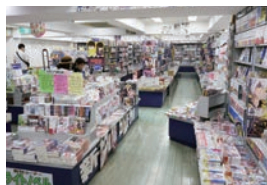
↑ A lot of popular Ado-chan goods.

There are also store original products that you can't get anywhere else!

#### Art Salon WASABI at coppice KICHIOJI

A gallery shop where you can find limited-edition products from domestic and foreign artists, including character goods and original drawings by Ado Mizumori, an artist living in Kichioji.

**Kichioji** MAP D-2 | coppice KICHIOJI, Bldg. B, 1F; 1-11-5, Kichioji-honcho, Musashino-shi Phone: 0422-57-4130 Open: 11AM-7PM Closed on Monday. [Access] 3 minutes walk from Kichioji Station North Exit



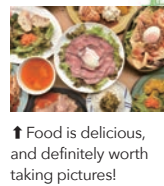
↑ The 3rd floor comic area has the best assortment in Kichioji.

#### Sun Road shopping district's local bookstore Books Ruhe

Located in Kichioji, the bookstore is connected with local animation studios and cartoonists and boasts signed 'Shikishi' as well as book covers with Kin Shiotani illustrations. The store also hosts exhibitions displaying the works of local cartoonists.

**Kichioji** MAP D-2 | 1-14-3 Kichioji-honcho, Musashino-shi Phone: 0422-22-5677 Open: 9AM-10:30PM ※ Closed at 9PM for the time being. Open all years around. [Access] 3 minutes from Kichioji Station North Exit

Musashino city has always had a strong connection with manga and anime. A lot of manga writers and editorial companies, as well as animation studios, are based in the area. Its scenery also appears in many manga and animation works.



↑ Food is delicious, and definitely worth taking pictures!

#### A unique shop run by a manga publisher CAFE ZENON & ZENONSAKABA Kichioji

Two adjacent stores are united in 2020. Café in the daytime and Meat Bar, "Manga magazine of the space" in the night. You can enjoy carefully selected meat and vegetables sent directly from Kumamoto. There is also a collaboration event for manga works.

**Kichioji** MAP E-3 | 2-11-1 Kichioji-minamicho, Musashino-shi Phone: 0422-27-2275 Open: 11:30AM-11PM (Closed at 10PM on Sundays) Open all years around. [Access] 5 minutes walk from Kichioji Station North Exit



© Kazuhiko Shimamoto・MOVIC Illustration: Siu Tatsuta  
↑ You can order at the "Gratte"  
※ Sample photo

#### Check out the seasonal events and fairs also Animate Kichioji PARCO

A shop for manga and anime lovers! They sell a wide range of things like manga, light novels, character-themed products including figure models, games, CD, and DVDs.

**Kichioji** MAP D-3 | Kichioji PARCO 7F, 1-5-1, Kichioji-honcho, Musashino-shi Phone: 0422-22-5059 Open: 10AM-8PM Cafe service: 11AM-7:15PM ※ Last Order at 6PM (drink), at 7PM (cookie) Closed when Kichioji PARCO is closed. [Access] 2 minutes walk from Kichioji Station North Exit

#### Kichioji Animation film Festival

Since 2005, it has been held in cooperation with the town's shopping street, large stores, and animation production related companies. Every year, the Grand Prix is selected from a large number of unique works, and animation artists who are active worldwide have been produced from this film festival. Talk events and bazaars are also held to coincide with the film festival.

## Major production companies

As the stage of "SHIROBAKO", it has been selected as a place related to popular Japanese anime "Japanese Anime Sanctuary 88 (2022 Edition)" (sponsored by the Anime Tourism Association). Let's check it out!



#### SHIROBAKO

An animated series mainly focusing on the animation industry. Sceneries of Musashisakai Station and Kichioji can be seen a lot within their stories.

© SHIROBAKO 製作委員会



sceneries from "SHIROBAKO."

## Major production companies

### Tatsunoko Production

An animation production company loved by all generation. Established in 1962 and moved from Kokubunji to Musashino city in 2013.

#### [Major Works]

"The Genie Family"  
"Kagaku Ninja-Tai Gatchaman"  
"Time Bokan Series"  
"Waccha Primagi!"

© TATSUNOKO PRODUCTION



### Coamix

Focusing on manga editing, publishing, and character business, we also develop manga research and artist development business. Aim to create and popularize better manga. Founded in 2000 (Heisei 12).

#### [Major Works]

"Record of Ragnarok"  
"unsung Cinderella"  
"Hospital pharmacist Aoi Midori-"  
"Fist of the North Star"  
"CITY HUNTER"

© アジチカ・梅村真也・フクイタクミ/コアミックス  
© 荒井マサレ/コアミックス  
© 武論尊・原哲夫/コアミックス 1983



### STUDIO4°C

An animation production company that is enthusiastically working on projects that transcend genres, centering on theater works, and is highly regarded around the world for its high-quality images.

#### [Major Works]

"Fortune Favors Lady Nikuko"  
"POUPELLE OF CHIMNEY TOWN"  
"Children of the Sea"  
"Black and White"

© 2019 五十嵐大介・小学館/「海獣の子供」製作委員会  
© 2021 漁港の肉子ちゃん 製作委員会



Musashino city's richness in nature is great for creative inspiration. In the Japanese anime "Yobarete Tobidete! Akubi-chan" you can see an Inokashira park inspired scenery. My dream is to open "Tatsunoko Land" named after my father's company.



#### Navigator

Character Designer  
Suzuka Yoshida

A daughter of Tatsuo Yoshida, who established Tatsunoko Production. She designed Akubi girl. A resident of Musashino city.



Exciting! MUSASHINO City

## 3. Music

Ever since Jazz cafes became a thing in this area in the 70s, the city has had a strong connection with music. There are many live music venues where you can enjoy listening to different bands, as well as music events hosted by Musashino city. Definitely worth a visit!

Have some good food and enjoy casually.



### It is a must go for all Jazz lovers! SOMETIME

A Jazz club opened by Iori Noguchi who played a big part in instigating the subculture boom in Kichijoji. Opened for more than 40 years now, its appearance is still the same, giving off a very antique vibe that almost looks like a scene of a movie.

**Kichijoji** MAP D-2 | 1-11-31, Kichijoji-honcho, Musashino-shi Phone: 0422-21-6336 Open: 11AM-11:00PM Open all year around. [Access] 3 minutes walk from Kichijoji Station North Exit

"Mandala Curry" (900 yen), which is popular for lunch cafe, etc.



### An old live music venue, loved for more than 40 years. MANDALA

You can enjoy all kinds of live music performances here along with comedy show or even public reading, where artists from all genres gather. A lot of food and drinks to choose from as well. Lunch and Cafe are also open.

**Kichijoji** MAP D-3 | 1-5-2, Kichijoji-minamicho, Musashino-shi; Floor B1 Phone: 0422-48-5003 Open: Lunch and Cafe 11:30AM-8PM (Depends on the day), LIVE time depends on the event. Open all year around. [Access] 2 minutes walk from Kichijoji Station Park Exit



A fun stage with a mirror on the ceiling!

### Loved by locals since its opening in 1978. SILVER ELEPHANT

A shop where many professional musician's session band appears. It has a good reputation for the quality of live video delivered!

**Kichijoji** MAP D-2 | 2-10-6 Kichijoji-honcho, Musashino-shi; Floor B1 Phone: 0422-22-3331 Open hours vary depending on events. No regular closing. [Access] 5 minutes walk from Kichijoji Station North Exit



Try their original curry while watching their live shows!

### Two-story structure with an open ceiling! STAR PINE'S CAFÉ

A nice spacious interior where you can enjoy different kinds of food as well as seasonal cocktails along with some live music, dance, acting and other kinds of performances.

**Kichijoji** MAP D-2 | 1-20-16, Kichijoji-honcho, Musashino-shi; Floor B1 Phone: 0422-23-2251 Open hours vary depending on events. Open all year around. [Access] 5 minutes walk from Kichijoji Station North Exit



### Music fills the city during Japanese holiday Golden week! Kichijoji Music Festival

Musashino city's iconic music festival which is also part of the "Kichijoji Welcome Campaign." Stages for this festival is not limited to one place, and you will see live performances everywhere whether it is inside a venue, shopping street, or outside just in front of the station! Try making several stops for some Jazz, music concerts and many more fun while walking around the city.

**Kichijoji** [Contact] 0422-23-5900 (Musashino city urban tourism corp.)

### Mesmerized by their dynamic performances Musashi Sakai JAZZ SESSION

A Jazz festival held every February at Musashino Swing Hall (P.19). There will be performances by local amateur bands as well as professional musicians who have a strong tie to the area. Indulge yourself with some good, live music and just feel the beauty of Jazz! Matinee performances are free. Soiree performances require reservations in advance. Composition changes from year to year

**Musashisakai** [Contact] 0422-23-5900 (Musashino city urban tourism corp.)



The 9th meeting is currently being adjusted with the aim of holding it after 2023.

Venue: Musashino Community Center (small hall)

### Held every four years to decide the world's best organ player! International Organ Competition Musashino-Tokyo

It is a world-class competition for organ players held in Musashino city! After going through a very difficult audition process, the world's top organists gather and perform to claim the best organ player in the world. Tickets to the competition as well as the preliminaries are available to the public. There is also some bonus performances of award-winning organ players.

**North Mitaka** MAP C-2 | Musashino Civic Cultural Hall 3-9-11 Naka-cho, Musashino-shi Phone: 0422-54-8822 Closed on Wednesdays (if it falls on a holiday, then it will be closed the next day) [Access] 13 minutes walk from Mitaka Station North Exit



Ever since the 1960s when a very first Jazz cafe opened in Kichijoji, the area has been known as "city of music" offering different genres of music. It grew, throughout decades, as a community where music lovers come together and connect. Music has the power to bring people together, and you are definitely invited to come to join the community.



### Navigator

Representative Director of company Mugi  
Mariko Noguchi

After taking over her father Iori Noguchi's business, she now runs multiple restaurants and cafes in Kichijoji as well as taking part in organizing the Kichijoji Music Festival.



## 4. Halls and Theaters

### Theater Companies



They perform all over Japan working to perpetuate the culture of theater.

### Where unique individuals gather to perform MEGUMI Theater Company

The company has been performing for more than 30 years mainly focusing on "Jidaigeki" (samurai dramas). Their skillfully beautiful sword battle is definitely a must-see. They also have shows in Kichijoji Theatre (P.19) so check it out.

**North Mitaka** MAP C-3 | 1-34-5-102 Naka-cho, Musashino-shi Phone: 0422-56-8857

Musashino city provides many opportunities to appreciate Japanese culture and art through top-notch performances and exhibitions. It is also a home to numerous theater companies that offer different programs and stage performances every day.



### Goodwill Ambassador of Musashino city urban tourism corp.! GEKIDAN ZENSHINZA

A theater company founded by kabuki actors in 1931. Based in Musashino city, the company has been working to spread the art of theater throughout Japan. They are also locally active. Activities rooted in the community, such as appearances at events in Musashino-shi and Kichijoji, and "Reading classes for adults" (held irregularly) at the rehearsal hall are also popular.

**Kichijoji** MAP D-3 | Zenshinza Building 2-4-3, Kichijoji-minamicho, Musashino-shi Phone: 0422-49-2811



↑ A story of Izo Okada, one of the most feared samurai of the Edo period.

Play based on  
auspicious gods  
of Musashino:  
"MATSURI"



Performance,  
when polished, becomes  
more and more vibrant. It is that  
vibrancy that moves people. I want  
to continue to polish and explore new  
aspects of performing. It is a never-  
ending journey, and there is no right  
answer. It is full of possibilities, which  
is what I also see in Musashino city. I  
want to continue to grow,  
just like this city will.

### Navigator

an actor from MEGUMI Theater Company  
Otoya Shinmiya

He joined the company in 1995 and has been playing important roles in all major performances of MEGUMI Theater Company.

### Musashino city's autumn tradition Kichijoji Noh Theater Performance



A fantastic stage with balefires.

A theater performance held every autumn since 1986. It features an old Japanese tree (zelkova) from Gessoji Temple as background which really ties the performance together. Enjoy watching the Japanese traditional form of art.

**Kichijoji** MAP D-2 | Gessoji Temple 1-11-26, Kichijoji-honcho, Musashino-shi  
※ Regarding the event please contact: 0422-23-5900 (Musashino city urban tourism corp.)

## Facilities



↑ Renovated in 2017.  
◀ They have both a big hall for multi-purpose (above) and a small hall for music concerts (below).

### A lovely Japanese-taste structure Musashino Geino Theater

They have a small theater hall on the 3rd floor which can hold up to 150 people where you can really immerse yourself in the performances very close to the stage. On the 2nd floor, they have a small hall which can be used for multi-purposes such as exhibitions or lectures.

**North Mitaka** MAP C-3 | 1-15-10 Naka-cho, Musashino-shi Phone: 0422-55-3500 Open: 10AM-11PM Closed on Wednesdays (If the day falls on a holiday, closing will be moved to the following weekday). [Access] 1 minute walk from Mitaka Station North Exit



↑ They also have adjoining rehearsal rooms.  
◀ The theater carries 189 seats in total.

## City's creative hub for culture and art Musashino Civic Cultural Hall

This center offers a wide range of programs such as concert, musical, ballet, theater and more. They carry both big and small size performance hall, as well as rooms for exhibitions and Japanese tea ceremony. The place is often used for school and amateur group performances. They are also known for having a pipe organ which is rather rare in Japan (P17).

**North Mitaka** MAP C-2 | 3-9-11, Naka-cho, Musashino-shi Phone: 0422-54-8822 Open: 9AM-10PM Closed on Wednesdays (If the day falls on a holiday, closing will be moved to the following weekday). [Access] 13 minutes walk from Mitaka Station North Exit



↑ The stage has a unique structure particularly for puppet theater to control the marionettes.

### Small, but loved by performers Kichijoji Theater

They offer a variety of performances mainly focusing on theater and dance. The stage also has a flexible structure to fit multi-purpose use and has a raked floor inclined for the audience to be able to fully enjoy the performance from any seating.

**Kichijoji** MAP E-3 | 1-33-22 Kichijoji-honcho, Musashino-shi Phone: 0422-22-0911 Open: 9AM-10:30PM Closed on last Tuesday of every month (In case the day falls on a holiday, closing will move to the following weekday). [Access] 5 minutes walk from Kichijoji Station North Exit

### Powerful soundproofing for powerful music Musashino Swing Hall

A dual structured hall provides perfect soundproofing, allowing dynamic music concerts as well as events to take place. They also have adjoining meeting rooms as well as multi-purpose space used for photo and painting exhibitions or parties.

**Musashisakai** MAP B-3 | 2-14-1 Sakai, Musashino-shi Phone: 0422-54-1313 Open: 9AM-10PM Closed on Mondays (If the day falls on a holiday, closing will be moved to the following weekday). [Access] 2 minutes walk from Musashisakai Station North Exit



↑ The hall is inside the Swing Building and 2 minutes walk from Musashisakai station



Exciting! **MUSASHINO City**

## 5. Marche

There are many markets that open over the weekend with popular local stores selling their specialties. It would be a fun way to spend a day going through different markets.



There are also fun games for children such as flying bingo.



You will find a wide range of products offered. Great for some family fun.



Vietnamese and Nepali buffet is available too.

On a winter night

### Musashino Illumination

During every winter season, from November to mid-February, areas in front of Kichijoji Station, Mitaka Station and Musashisakai Station are lit up with beautiful lights. On the day of the light-up, they have live-music performances to celebrate.



Kichijoji Station



Mitaka Station North Exit



Musashisakai Station

### Enjoy the morning of Musashisakai! Sakai Marché

Popular local bakeries and cafes gather here. It will be a nice way to start the day, with freshly baked bread and coffee with live music of the violin.

**Musashisakai** MAP B-3 | [Venue] Kyonan Fureai Square Park ※ In front of Musashino Place (2-3, Kyonan-cho, Musashino-shi) [Host] The committee for activating Musashisakai area [Contact] Phone: 0422-31-8825

Open on first Sundays of April through October (except August)  
※ Changes can occur to time and location.



### A community event right by Mitaka station North Exit Towers Marché @ Musashino

Local restaurants and general stores gather at the north exit of Mitaka Station. If you stop by, you will surely find "fun" and "delicious". (Please check the website for the schedule)

**North Mitaka** MAP C-2 | [Venue] Musashino Towers Skygate tower Southend Public Open space (1-12-10, Naka-cho, Musashino-shi) [Host] Musashino Market Committee [Contact] Phone: 0422-53-1814

Held 4-5 times a year

### An indoor market fun even on rainy days Mitaka Marché: craftsmens and farmers market

Held at Harmonica Yokochō Mitaka where unique and stylish bars gather. Great for making a casual stop. They offer freshly baked bread, quiche as well as craft items.

**North Mitaka** MAP C-2 | [Venue] Harmonica Yokochō Mitaka (Shinwa Building 1-5-8, Naka-cho, Musashino-shi) [Host] Video Information Center [Contact] Phone: 0422-21-8019

The 4th Sunday of every month: 11AM-3PM  
※ Not held in August

See, buy, and eat to enhance the morning time

In peacetime. On the 3rd Sunday of every month: 7:00-10:00

### Full of "Delicious & Fun" Harmonica Yokochō Morning Market



When looking into the alley, there are about 80 small shops. Fresh vegetables, handmade sweets and miscellaneous goods, and antiques, a variety of unique items are on display. The event will be canceled for the time being to prevent the spread of infectious diseases. Please check the official SNS for resumption.

**Kichijoji** MAP D-3 | [Place] Kichijoji Station North Exit Harmonica Yokochō [Sponsor] Harmonica Yokochō Morning Market Executive Committee [Inquiry] hy.asaichi@gmail.com

### Food, sweets, cute items and more! GREENING MARCHÉ



As the name "Greening" suggests, their concept is to enrich yourself in healthy greens. Stores not only from Kichijoji but from all over Japan gather here to offer their best organic goods for an enriching lifestyle.

**Kichijoji** MAP D-2 | [Venue] coppice KICHIOJOI Building-A on 1st-Floor concourse (1-11-5, Kichijoji-honcho, Musashino-shi) [Host] coppice KICHIOJOI [Contact] Phone: 0422-27-2100 (coppice KICHIOJOI Reception)

The 3rd Saturday and Sunday of every month: 10AM-5PM  
※ August only from 10:00 to 18:00  
(May change depending on the situation.)



## HALF-DAY TRIP

~ Some morning-fun in Musashino city ~

Why don't you get up early and enjoy your Sunday morning?

AM 7:00



"Harmonica Yokochō Morning Market" is held on the 3rd Sunday of every month starting at 7AM. (Currently canceled.) A lot of the stores start to close by 9:30AM...

AM 9:00



※ Art Markets: A lively event where you can enjoy different craft items, and performances. (Pre-registration needed to participate as a stall.) Mainly held on Weekends and holidays.

Then, head to the "Art Markets" at Inokashira Park Zoo.

PM 12:00



Trying the popular yakitori from "Iseya" will definitely fill you up! And the day continues!

### ISEYA KOENTEN

**Kichijoji** MAP D-3 | 1-15-8 Kichijoji-minamicho, Musashino-shi Phone: 0422-43-2806 Open: Noon-10PM ※ It may change. Contact us by phone in advance. Closed on Mondays. (Open if Monday is a national holiday, closed on Wednesday of the week.) [Access] 4 minutes walk from Kichijoji Station Park Exit



## 6. Café

### A cafe for book lovers



Their homemade pancakes are so popular with both adults and children.

### A cozy Jazz cafe



A cozy, log house-like interior.

### A retro-style, old school cafe



Cheese cake is their signature dessert

### A collaborative shop born under the overpass



Inside the store where you can feel the warmth of homemade

There many cafes in the city where you can stop by to relax, including both old-style as well as modern, stylish ones. Here are our recommendation of places. Why not stop by some of them in-between your shopping strolls?

### A stylish cade inside Musashino Place Café Fermata

They offer variety of healthy menu including lots of vegetables as well as sweets with no preservatives. Alcohol such as beer and Romanian wine is also served. Enjoy some drinks with a book from the library in your hand.

**Musashisakai** MAP B-3 | Musashino Place 1F; 2-3-18 Kyonan-cho, Musashino-shi Phone: 080-3447-3825 Open: 9:30AM - 9:30PM (Last Order at 9PM) Closed on Wednesdays. [Access] 1 minute walk from Musashisakai Station South Exit

### Cafe at daytime and bar at night Kichijoji More

Indulging yourself in the sound of Jazz and enjoying a sip of coffee or alcohol is the way to go. They also have foods available such as Japanese omelet along with other culturally diverse menus.

**Kichijoji** MAP D-2 | Sansui Building 2F; 1-8-14, Kichijoji-honcho, Musashino-shi Phone: 0422-21-3007 Open: 11:30AM-Midnight Friday, Saturday, a day before a holiday from 11:00AM-Midnight ※ (Lunch hours: 11:30AM-5:30PM) Open all year around. [Access] 3 minutes walk from Kichijoji Station North Exit

### A famous coffee shop in Kichijoji loved for over 35 years Musashino Coffee Shop

A calm atmosphere with some classical music in the background. They use selective coffee beans and tea which are poured very specifically. Their homebaked sweets are definitely worth trying too.

**Kichijoji** MAP D-3 | Ogigami Building 2F; 1-16-11, Kichijoji-minamicho, Musashino-shi Phone: 0422-47-6741 Open: 11AM-11PM※ During the emergency declaration, the closing time as requested. Open all year around. [Access] 3 minutes walk from Kichijoji Station South Exit

### Play! Rest! Eat! modern style food court Ond

Three cooperative shops by local players: Coffee counter, Tart specialty store, and Deli. It is a new famous Musashisakai spot that has a roasted coffee shop and a craft brewery, the first in Musashino-shi, in the store.

**Musashisakai** MAP A-3 | Nonomichi Sakai West 3-2-13 Kyonan-cho, Musashino-shi Phone: 0422-38-5500 Open: Public Counter 10AM-9PM Markhol Deli 10AM-8PM Bateau a tartes 11AM-9PM Roasting place 10AM-9PM Closed on Wednesdays. [Access] 6 minutes walk from Musashisakai Station South Exit

### Paris Cafe, the first store in the world



Using carefully selected materials, the authentic taste of Paris is attractive.

### Cafes with living creatures



### A cozy café in front of Mitakastation



### Have a taste of Pari in Kichijoji! LI BERTÉ PÂTISSERIE BOULANGERIE (Tokyo Main Store)

Patisserie boulangerie born in Paris. Bread made in the open workshop on the 1st floor and seasonal vegetable plates and pancake sets that can be eaten at the cafe on the 2nd floor are popular.

**Kichijoji** MAP D-2 | 2-14-3 Kichijoji-honcho, Musashino-shi Phone: 0422-27-6593 Open: 10AM-7:30PM Saturdays, Sundays, Holidays 9AM-7:30PM (Last Order at 7PM) ※ Lunch hours: 11AM-3PM Open all year around (Please check the HP). [Access] 6 minutes walk from Kichijoji Station North Exit

### A cafe for reptile lovers Hachu cafe

Total of 50 reptiles including lizards, snakes, and chameleons will be waiting at the cafe to welcome your visit. Seating will cost 550 yen and must order at least one drink per person.

**Kichijoji** MAP D-2 | 4-6-3, Kichijoji-honcho, Musashino-shi Phone: 0422-27-6798 Open: Noon-8PM Closed on Wednesdays. [Access] 8 minutes walk from Kichijoji Station North Exit

### A cafe for reptile lovers cafe' terrasse verte

This is a café where you can bring your dog with you. Inside of a cozy refined café, you can enjoy tasty plates and drinks and also choose a terrace seat to keep your dog beside you.

**North Mitaka** MAP C-3 | Matsuya Foods Head Office Bldg. 2F 1-14-5, Nakacho, Musashino-shi 0422-38-1150 Open: 7:00-22:00 (the last orders 21:30) Weekdays, 9:00-21:30 (the last orders 21:00) Saturday, Sundays and Holidays, Open all year around

### Fascinating Night Spots

#### Started out as an underground economy after the war Harmonica Yokocho

**Kichijoji** MAP D-3 | 1-chome, Kichijoji-honcho, Musashino-shi [Access] 1 minute walk from Kichijoji Station North Exit

A narrow, hidden alley clustered with almost 100 bars and stores. Many shoppers stop by during the daytime, and at night it is lively with people enjoying their drinks under the lit-up lights.



Not knowing where you might end up that night is the fun of this alley.



## 7. Souvenirs

You can find all kinds of souvenirs here in Musashino city, from traditional to new and original. Their local brand called "Musashino Premium" which offers locally grown products is definitely worth checking.

### Musashino Super Premium

Musashino Premium is a certified product that represents Musashino-shi with excellent locality, uniqueness and reliability. Among the products that have passed the three-year certification period, 15 products that meet stricter screening standards are certified as Musashino Super Premium.

← A booklet with information on souvenirs from Musashino city. Available at Musashino city urban tourism corp. (MAP D-2). <http://musashino-premium.com/>

Musashino premium certified products can be purchased here



#### Antenna shop mugiwara-boshi

We are selling products and specialties of 9 domestic friendship cities and Musashino-shi. Rare gems are lined up in the "Musashino Premium" corner set up in the center of the store.

**Kichijoji** MAP D-2 | 2-33-1 Kichijoji-honcho, Musashino-shi Phone: 0422-29-0331 Open: 10:30AM-6:30PM Open all year around. [Access] 6 minutes walk from Kichijoji Station North Exit



#### Korokuya Musashisakai Store

There are more than 120 items including Musashino premium certified products from Japanese and Western confectionery to other foods. The store's original assorted gifts are also popular.

**Musashisakai** MAP B-3 | nonowa Musashisakai EAST 2-1-35 Kyonan-cho, Musashino-shi Phone: 0422-38-5222 Open: 10AM-9PM, Weekends and Holidays 10AM-8PM Open all year around. [Access] Directly connected to Musashisakai Station

#### 1 Baked with care Inokashira Rice Crackers

162 yen apiece



< Dealer >

**Tokyu Department Store Kichijoji (Basement Floor)**

**Kichijoji** MAP D-2 | 2-3-1, Kichijoji-honcho, Musashino-shi Phone: 0422-21-5202 Open: 10:30AM-7PM Open all year around. ※ Check HP for the latest information. [Access] 7 minutes walk from Kichijoji Station North Exit

#### 3 Spicy and mellow Kichijoji Chile Oil with Gold Leaf

45g 735 yen, 90g 1296 yen



< Dealer >

**Korokuya Musashisakai Store**

**Musashisakai** MAP B-3 | nonowa Musashisakai EAST 2-1-35 Kyonan-cho, Musashino-shi Phone: 0422-38-5222 Open: 10AM-9PM, Weekends and Holidays 10AM-8PM Open all year around. [Access] Directly connected to Musashisakai Station

#### 5 An addictive, lingering spiciness Musashisakai Chorizo Cheese Frankfurt Sausages

600 yen apiece



**König Kichijoji**

**Kichijoji** MAP D-3 | 1-17-1 Kichijoji-minamicho, Musashino-shi Phone: 0422-49-4186 Open: 11AM-7:30PM Open all year around. [Access] 7 minutes walk from Kichijoji Station Park Exit

#### 2 The fluffiness is just so addictive! Kichijoji Fries

shrimp • scallop 250 yen apiece, cheese • squid 185 yen apiece

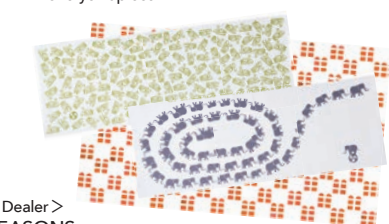


**Tsukada Suisan**

**Kichijoji** MAP D-3 | 1-1-8 Kichijoji-honcho, Musashino-shi Phone: 0422-22-4829 Open: 10AM-6:30PM (Closes at 6PM in Summer.) Open all year around. [Access] 2 minutes walk from Kichijoji Station North Exit

#### 4 Cute Kichijoji-like design. Hand-dyed tenugui of swan-shaped boats and elephants.

1375 yen apiece



< Dealer >  
**SEASONS**

**Kichijoji** MAP D-2 | 1-27-3, Kichijoji-honcho, Musashino-shi Phone: 0422-27-2874 Open: 11:30AM-7PM Closed on Tuesdays and Wednesdays. [Access] 10 minutes walk from Kichijoji Station North Exit

#### 6 A long-seller loved for more than 20 years Coffee Daifuku (rice cake)

189 yen apiece



**Koubaidou**

**Kichijoji** MAP D-2 | 2-2-12, Kichijoji-kitamachi, Musashino-shi Phone: 0422-22-6026 Open: 8AM-7PM Open all year around. [Access] 17 minutes walk from Kichijoji Station North Exit



7

Taste of locally grown flour as you bite  
**Musashino Udon**  
330 yen (Includes 2)

< Dealer >

Korokuya  
Musashisakai Store

**Musashisakai** MAP B-3 | nono  
wa Musashisakai EAST 2-1-35  
Kyonan-cho, Musashino-shi Ph  
one: 0422-38-5222 Open: 10AM-  
9PM, Weekends and Holidays  
10AM-8PM Open all year arou  
nd. [Access] Directly connect  
ed to Musashisakai Station



9

Choose an illustration and complete  
an order T-shirt!  
**kinshio UTme!**  
1990 yen (1550yen for children)



< Dealer >

UNIQLO Kichijoji Store

**Kichijoji** MAP D-3 | 2-2-17 Kichijoji-honcho, Musashino-shi  
(Kichijoji Nakamichi Dori Entrance) Phone: 0422-28-0160 Open:  
10AM-8PM Open all year around. [Access] 2 minutes walk from  
Kichijoji Station North Exit

11

Taste of your sour-sweet first love  
**Hatsukoi Lemon**  
180yen, each



Patisserie TIARE

**Kichijoji** MAP C-2 | 1-4-10 Midori-cho, Musashino-shi Ph  
one: 0422-51-2804 Open: 10:30 - 18:00 Closed on Thursdays  
[Access] In front of Kanto Bus stop "Musashino Jutaku"

8

Make it cold or warm and  
enjoy different texture  
**Musashinokuni Rice Castella  
sponge cake (MuBus Package)**  
980 yen apiece



Esprit de Paris

**North Mitaka** MAP C-2 | Forest 1F; 3-5-12, Naka-cho, Musashino-  
shi Phone: 0422-54-5139 Open: 10AM-7PM Open all year  
around. [Access] 15 minutes walk from Mitaka Station North Exit

10

Special products made with children  
living in Musashisakai  
**Sakai no Tongarasi  
(red chili pepper flakes)**  
10g 216 yen

< Dealer >

Hainan Yaki Shoron Po

**Musashisakai** MAP B-2 | 2-3-1  
Sakai, Musashino-shi Phone:  
0422-37-0539 Open: 11AM-  
9PM, Saturdays and Sundays  
11AM-8PM Closed on  
Thursday. [access] 3 minutes walk  
from Musashisakai Station North  
Exit



12

♪ Custom-made with harmonica motif ♪  
**Harmonaca®(Hamonaka)**  
1134 yen (Includes 6)



Kichijoji Toraya Daiyagai Alpha Store

**Kichijoji** MAP D-3 | 1-2-7 Kichijoji-honcho, Musashino-shi  
(Daiyagai Alpha Store) Phone: 0422-22-2083 Open: 10AM-  
7PM closed on Wednesdays. [Access] 2 minutes walk from Ki  
chijoji Station North Exit

13

Fun to watch, delicious to eat  
**Musashino GEO sable**  
270 yen apiece



Patisserie A.K Labo

**North Mitaka** MAP D-2 | 3-28-11 Naka-cho, Musashino-shi Phone:  
0422-38-9727 Open: 10AM-6PM Closed on Wednesdays and Th  
ursdays. [Access] 17minutes walk from Mitaka Station North Exit

14

15 years of being loved by bread lovers  
**Maple melon bread**  
220 yen apiece



Bonjour Bon Kichijoji Store

**Musashisakai** MAP B-3 | Ito Yokado East Building 1F; 2-2-20  
Kyonan-cho, Musashino-shi Phone: 0422-30-8844 Open:  
10AM-8PM Irregular holidays. [access] 2 minutes walk from  
Musashisakai Station South Exit

15

The most popular item among staff/  
Number one product  
**Rum Raisin Butter cream  
Sandwich Cookies**  
2800 yen (Includes 8)



Lemon Drop Kichijoji Main Store

**Kichijoji** MAP D-3 | Lemon Bldg.1F 1-2-8 Kichijoji-honcho,  
Musashino-shi Phone: 0422-22-9681 Open: 10:30AM-9:30PM  
Open all year around. [Access] 2 minutes walk from Kichijoji Sta  
tion North Exit

Lemon Drop Hanabusagaro-ten

**Kichijoji** MAP D-3 | 2-19-6 Kichijoji-honcho, Musashino-shi  
Phone: 0422-23-0578 Open: 11AM-8PM Open all year around

Some of the finest  
specialties

A classic souvenir  
from Kichijoji.

**Monaka**

550 yen (Includes 5)~

Contains plenty of  
high-quality sweet  
bean jam.



Ozasa

**Kichijoji** MAP D-3 | 1-1-8, Kichijoji-honcho, Musashino-shi  
Phone: 0422-22-7230 Open: 10AM-7:30PM Closed on Tues  
days. [Access] 2 minutes walk from Kichijoji Station North Exit

Fragrant aroma &  
unique texture!  
Accented with  
delicious salt

Masterpiece of  
German bread  
specialty store.

**Pretzels**

152 yen



Kichijoji Rinde Main Store

**Kichijoji** MAP D-2 | 1-11-27 Kichijoji-honcho, Musashino-shi  
Phone: 0422-23-1412 Open: 10AM-7PM (The cafe on the 2nd  
floor closes at 6PM) Open all year around. [access] 5 minutes  
walk from Kichijoji North Exit

Impressive  
deliciousness at  
home!

The fluffy dough is  
filled with rich  
bean paste!

**Grilled  
Shoron Po**

600 yen (Includes 5)  
\*Container fee is not  
included.



Hainan Yaki Shoron Po

**Musashisakai** MAP B-2 | 2-3-1 Sakai, Musashino-shi Phone:  
0422-37-0539 Open: 11AM-9PM, Saturdays and Sundays  
11AM-8PM Closed on Thursday [access] 3 minutes walk  
from Musashisakai Station North exit



Exciting! MUSASHINO City

## 8. Farmers Markets

~Fruits and Vegetables~

### Agricultural Co-operatives in the city

●JA Tokyo Musashi, Musashino Fresh Market | 1-18-10, Nishikubo, Musashino-shi Phone: 0422-54-7150 Open: 10AM-4PM Open all year around.



There are many farmers market in the city where you can buy freshly picked vegetables and fruits that come straight from the farm, where the food has been nurtured with care and effort. Cabbage, radish, Japanese spinach and many more seasonal foods available.



#### Kichijoji-kitamachi

- 1 Kitamachi Sancho; 3-12, Kichijoji-kitamachi, Musashino-shi [Products] Vegetables Open: 9AM-
- 2 MuBus 29; 2-13 Kichijoji-kitamachi, Musashino-shi [Products] Vegetables Open: 10AM-
- 3 Kichijoji-kitamachi Direct Sales Depot; 2-14 Kichijoji-kitamachi, Musashino-shi [Products] Vegetables Open: 9AM-6PM
- 4 Kitamachi Yoikono Noen Farm; 3-14, Kichijoji-kitamachi, Musashino-shi [Products] Vegetables Open: 9AM-4PM (Vegetable vending machine installed) ※Reservation required for potato digging.
- 5 Tanaka Engei; 3-15 Kichijoji-kitamachi, Musashino-shi [Products] Vegetables Open: 10AM-
- 6 Higashi Kitaurabashi Direct Sales Depot; 3-16 Kichijoji-kitamachi, Musashino-shi [Products] Vegetables Open: 9AM-
- 7 Yamafuku; 5-8 Kichijoji-kitamachi, Musashino-shi [Products] Vegetables Open: 10AM-Noon / 1PM-4PM
- 8 Tanaka Farm; 5-9, Kichijoji-kitamachi, Musashino-shi [Products] Vegetables Open: 9AM-5PM (Vegetable vending machine installed)
- 9 Hidamari; 5-11, Kichijoji-kitamachi, Musashino-shi [Products] Vegetables Open: 11AM-

#### Nishikubo

- 10 Masataka Enoki Farm; 2-3-12 Nishikubo, Musashino-shi (☎51-1689) [Products] Vegetables Open: 10AM-5PM
  - 11 Nishikubo Iguchi; 2-15, Nishikubo, Musashino-shi [Products] Vegetables, available irregularly
  - 12 Enosho Vegetables Market; 3-11, Nishikubo, Musashino-shi [Products] Vegetables Open: 10AM-
- Yahata-cho**
- 13 Tanaka Produce Direct Sales Depot; 1-2, Yahata-cho, Musashino-shi [Products] Vegetables (late May to early August) Open: October-December 11:00-
  - 14 Sakamoto's Vegetable Farm; 1-2, Yahata-cho, Musashino-shi [Products] Vegetables Open: 11AM-
  - 15 Garden Sales Depot; 1-5, Yahata-cho, Musashino-shi (☎51-1447) [Products] Vegetables Open: 10AM-5PM
  - 16 Jikadori Direct Sales Depot; 1-5, Yahata-cho, Musashino-shi [Products] Vegetables Open: 11AM-5PM (Vegetable vending machine installed)

#### Sekimae

- 17 Purple Farm Musashino; 2-1, Sekimae, Musashino-shi (☎52-1440) [Products] Blueberry picking from early July to mid August Open: 9AM-Noon Vegetables, available from early November to late December
- 18 Enomoto Direct Sales Depot; 2-25, Sekimae, Musashino-shi (☎090-3446-2154) [Products] Fruits and vegetables Open: 10AM-
- 19 K's Farm; 2-29 Sekimae, Musashino-shi [Sales items] Vegetables Open: June-August 10:00-
- 20 Kenchan Farm; 3-12, Sekimae, Musashino-shi (☎52-0129) [Products] Blueberry picking from mid-July to early September
- 21 Sekimae Sancho Kurien Chestnut Farm; 3-15-13, Sekimae, Musashino-shi (☎54-0700) [Products] Chestnuts from September- Early October Open: 10AM-
- 22 Enomoto Engei Farm, Vegetables Section; 3-41-17, Sekimae, Musashino-shi (☎54-4128) [Products] Flowers, vegetables, potted plants Open: 9:30AM-5PM
- 23 Seasonal Vegetable Farm; 4-8, Sekimae, Musashino-shi [Products] Vegetables Open: 10AM-
- 24 YS Farm; 4-8, Sekimae, Musashino-shi (☎51-5212) [Products] Vegetables Open: 10AM-

- 25 Shinsakuraen Farm; 5-17-15, Sekimae, Musashino-shi (☎090-3134-5006) [Products] Vegetables Open: 9AM-2PM
- 26 Nagoyaen Farm; 5-18, Sekimae, Musashino-shi [Products] Vegetables Open: 10AM-
- 27 Udobashi Farm; 5-19 Sekimae, Musashino-shi (☎52-4623) [Products] Cut flowers and vegetables Open: 9AM-5PM

#### Sakai

- 28 Vegetable School, Sakamura Direct Sales Depot; 2-11 Sakai, Musashino-shi [Products] Vegetables No regular closing (Closed if rain).
- 29 Takahiro Farm, Direct Sales Depot; 4-10, Sakai, Musashino-shi [Products] Vegetables Open: After Golden Week (May) to early February Open: 10:30AM-Sunset
- 30 Shimizu Farm; 4-11 Sakai, Musashino-shi (☎090-6495-2467) [Products] Organic vegetables, pickled-radish making, customized vegetables, corn picking, etc.
- 31 Tsuchiya; 5-2 Sakai, Musashino-shi [Products] Vegetables Open: 9:30AM-
- 32 Takahashi Berry Farm; 5-10 Sakai, Musashino-shi (☎51-4608) [Products] Blueberry picking from early July to late August
- 33 Goto Farm; 5-26 Sakai, Musashino-shi [Products] Vegetables (No regular openings)

#### Kyonan-cho

- 34 Funaki Vegetables Farm; 1-20 Kyonan-cho, Musashino-shi (☎31-1744) [Products] Vegetables Open: 10AM-5PM
  - 35 Funaki Garden; 1-25 Kyonan-cho, Musashino-shi (☎32-1627) [Products] Young Japanese Camellia and Sasanqua Open: 9:30AM-around 5PM
  - 36 Funaki Farm; 2-11 Kyonan-cho, Musashino-shi [Products] Vegetables Open: 10AM-around 5PM
  - 37 Takeuchi Fruit Farm; 2-19 Kyonan-cho, Musashino-shi (☎0422-31-9570) [Products] Grapes, pears, persimmons, kiwi fruits Open: 10:00-
  - 38 Funaki Grape Garden; 2-28 Kyonan-cho, Musashino-shi (☎32-3570) [Products] Grape picking from 10th to late August Open: 10AM-5PM
  - 39 Aji no Kodawari, Vegetables Direct Sales Depot; 4-11 Kyonan-cho, Musashino-shi (☎32-4213) [Products] Vegetables Open: 10AM-
  - 40 Yoshino Farm, Direct Sales Depot; 4-11 Kyonan-cho, Musashino-shi (☎31-0010) [Products] Vegetables, cut flowers and persimmons and kiwi fruits Open: 10AM-
- ※Products may vary depending on time and season. Close when sold-out.

### List of Farmers Shops

I've been selling farm-fresh products for 30 years now and we're probably the first one to start. We always have more than 20 kinds of products available. Some of our customers like gardening and we often have fun conversations on how to grow vegetables. Please come and try our vegetables too!



#### Navigator

10 Masataka Enomoto Farm  
Mr. Masataka Enomoto



## 9.Events

There are many fun events being held in the city every month, ranging from traditional Japanese matsuri to unique festivals. Why not check some out! Event schedules can be changed due to the spread of the Covid-19.

**1**  
January



Daikisshou Digital Stamp Tour **Kichijoji**  
Musashino's Seven Gods of Good Fortune Tour  
**Kichijoji North Mitaka Musashisakai**

**3**  
March

Musashino city Road Race  
**North Mitaka**

**5**  
May



Kichijoji Music Festival  
-Kichijoji Welcome Campaign- **Kichijoji**  
Children's sumo wrestling **North Mitaka**



**7**  
July

Bon Odori Festival **North Mitaka**  
Kichijoji Fureai Summer Festival **Kichijoji**  
Kichijoji South Exit Fureai  
Summer Festival **Kichijoji**

**2**  
February



Kizuki Taisha Shrine "Setsubun Festival  
(bringing good luck)" **Musashisakai**  
Musashino Hachimangu Shrine "Setsubun  
Tsuina Ceremony" **Kichijoji**  
Musashisakai JAZZ SESSION **Musashisakai**  
Kichijoji Animation film Festival  
-Kichijoji Welcome Campaign- **Kichijoji**

**4**  
April



Musashino Cherry Blossom Festival **North Mitaka**  
Kichijoji Flower Festival (Gessoji Temple) **Kichijoji**

**6**  
June



Growing chilli pepper together **Musashisakai**



**8**  
August



Sun Road Gessoji Summer Festival **Kichijoji**  
Sakai Minami Bon Odori Festival **Musashisakai**  
Sekimae Hachiman Festival **North Mitaka**  
Sakai Night Market **Musashisakai**

**10**  
October



Kichijoji Noh Theater Performance  
(Gessoji Temple) **Kichijoji**  
Chili Pepper Harvest Festival **Musashisakai**  
Kichijoji Collection (fashion show) **North Mitaka**

**12**  
December

KICHION Super Stage KICHION **Kichijoji**  
• Jazz Concert  
• Bigband Concert  
• KICHION Contest  
Daikisshou Digital Stamp Tour **Kichijoji**

**9**  
September

Model Airplane Festival **North Mitaka**  
Kichijoji Autumn Festival **Kichijoji**  
Musashino city Treasure Hunting  
**Kichijoji North Mitaka Musashisakai**

**11**  
November



Musashino Banquet Festa  
**Kichijoji North Mitaka Musashisakai**  
Musashino Illuminations  
-Kichijoji Station, Mitaka Station and  
Musashisakai Station- **Kichijoji North Mitaka Musashisakai**  
Musashino Hachimangu Shrine  
Otori Festival **Kichijoji**  
Kichijoji Music Festival  
-Kichijoji Welcome Campaign-  
(Scheduled for 2021) **Kichijoji**  
Musashisakai Performers' Festival **Musashisakai**  
Musashino Environment Festival **North Mitaka**  
Musashino-shi Agricultural Exhibition **North Mitaka**  
Musashino International  
Networking Festival **Musashisakai**

Pick UP!



↑ Enjoy the colors of each Mikoshi. "Musashino Bayashi"  
will get the festival going.

**Chonai mikoshi (portable shrine for the town)**

SunRoad Mikoshi/Heiwa Dori Mikoshi/Daiya Gai  
Mikoshi/Jonan Mikoshi/Taisho Fest. Mikoshi/Inokashira  
Dori Mikoshi/Kichinan Fest. Mikoshi/Itsukaichi Dori  
Friendship Mikoshi/Inari Mikoshi/Nakamichi Fest. Mikoshi

**9**  
September

**Eleven mikoshi will parade through the city!  
Kichijoji Autumn Festival**

A historical autumn festival held in mid-September every year. Total of eleven mikoshi including the miya-mikoshi from Musashino Hachimangu Shrine and ten others from local shrines will powerfully parade through the city! There is also a performance of "Musashino Bayashi", city's intangible folk culture asset, as well as the lively chants which definitely adds to the fun. It is held for two days.

**Kichijoji** MAP D-2 | [Venue] Musashino Hachimangu Shrine, and around Kichijoji Station [Host] Kichijoji Autumn Festival Committee [Contact] Musashino city urban tourism corp. Phone: 0422-23-5900



# ONE-DAY TRIP

What kind of day do you want to spend? Pick a plan according to your liking, and enjoy Musashino city to the fullest.

## Manga & Anime lovers Going Otaku



④ Dining and Bar Kashiya

10:00

Musashisakai

Visit the holy lands of manga and anime! (P.15)

Check out sceneries from "SHIROBAKO".

12:00

Kichijoji

Enjoy the Gorō approved spaghetti!

A little cafe seen in the manga "Kodoku no Gourmet". The main character Gorō Inogashira brags about this spaghetti in the story!



15:00

Kichijoji

Hopping from one anime shop to another!

Try finding rare anime goods. There are two stores in Kichijoji that all anime and manga lovers are obsessed with!



Animate Kichijoji (P.14)

Their Horumonyaki is to die for!



⑤ Horumonyaki & Shochu bar "WA"

③ "Village Vanguard on the Corner" Kichijoji PARCO

19:00

Kichijoji

Cheers to all the manga creators!

In Kichijoji, there are many bars where manga writers go to. In this famous bar called "WA", the walls are covered with manga writers' signatures!

## Nature lovers Going Active



North Mitaka

Musashisakai

Visit nature and greens!

Enjoy a bike ride from Musashisakai to North Mitaka Area while making a few stops for some nature!



An Italian restaurant that serves Neapolitan pizza and organic wine

⑥ Musashino Campus

Don't forget to return your bike at Musashisakai station....



10:00

Musashisakai

Rent a "Suicle" bicycle

Cycling is the best way to enjoy North Mitaka and Musashisakai area. You can rent a bike near Musashisakai Station.

HELLO CYCLING, under the overhead railway at Musashisakai Sta. (MAP B-3) ※Details on P.37



⑦ Green Park Path

A quick stop for some great food!



⑧ Musashino Chuo Park

19:00

Musashisakai

Find your favorite store at "Skipu-dori Shopping Street"

There are about 50 restaurants and specialty stores on both sides of the 200-meter-long street in the "Skipu-dori Shopping Street" near the north exit of Musashisakai Station. Let's enter the store that you are interested in.

## For a relaxing day Family time



They have swan-shaped boats!

You can't miss this place if you're in Musashino city. Enjoy a nice relaxing walk.

12:00

Kichijoji

A nice picnic with some food to-go

Get yourself some fresh hotdogs from a sausage shop just by Inokashira Park. You can have a little picnic with nature.

Koenig Kichijoji (P.25)



14:00

Kichijoji

Have fun with the animals at Inokashira Park Zoo



Their souvenir shops have original products too!

Entrance Fee: 400 yen for adults, 150 yen for Junior High school students, 200 yen for seniors over 65 years old. (Free for children below elementary school as well as Junior High school students residing in Tokyo)

Inokashira Park Zoo (P.7)

17:00

Kichijoji

Stop for some grocery shopping after a fun day

atré offers a variety of sweets and vegetables. What should we get today? Be careful though, it's easy to lose control!

⑨ atré Kichijoji



Open all year around./⑩ Green Park Path MAP B-2 | 1-Chome, Sekimae, Musashino-shi/⑪ Musashino Campus MAP C-2 | 2-1-9 Naka-cho, Musashino-shi Phone: 0422-36-6218 Open: 11AM-3PM (Last Order at 2:30PM) /5:30PM-10PM (Last Order at 9:30PM) Closed on Wednesday's Lunch (Dinner is open)./⑫

Musashino Chuo Park MAP C-1 | 2-4-22 Yahata-cho, Musashino-shi (Administration Office) Phone: 0422-54-1884/⑬ atré Kichijoji MAP D-3 | 1-1-24, Kichijoji-minamicho, Musashino-shi Phone: 0422-22-1401 Open: 10AM-9PM (Restaurant 11AM-10PM) Open all year around.



## Visitor's Information Bus Tables

### Stops and Destinations

As of September 2021



Kanto Bus



Odakyu Bus



Seibu Bus

### Kichijoji Station

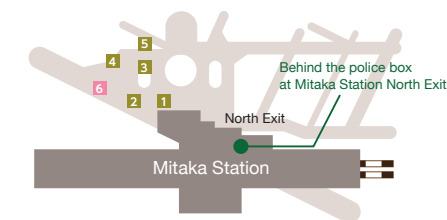
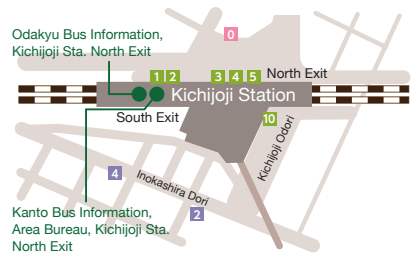
Bus stop	Route	Destination	Via	Bus Company		
North Exit	1	Kichi 73 Kichi 75	Mukodaicho 5-chome Vi: Garden Nishi Tokyo	Seikei Gakuen mae/Musashino Daigaku Seikei Gakuen mae/Musashino Daigaku	Kanto Bus	
	2	Kichi 54 Kichi 53	Musashino Shiyakusho Yagisawa Sta.	Seikei Gakuen mae Seikei Gakuen mae / Musashino Jutaku	Kanto Bus	
	3	Nishi 10	Nishi Ogikubo Sta.	Tokyo Joshi Dai mae	Kanto Bus	
	3	Wan 01	Daiba / Ariake	Takaido Sta.	Kanto Bus	
	4	Kichi 61	Tomin Noen Sekonic	Musashiseki Sta. iriguchi/ Oizumigakuen Sta.	Seibu Bus	
	5	Kichi 63	Hoya Sta. Minamiguchi	Kitauro	Seibu Bus	
	10	Airport	Haneda Airport/Narita International Airport	Joint operation—Odakyu/Kanto/ Airport Transport Service/Keiikyū/Keisei	Kanto Bus	
	0	Mubus	Kichijoji East Route/Kichijoji	Northwest Route/Mitaka-Kichijoji Route	Kanto Bus	
	South Exit	2	Kichi 02	Chitosekagayama Sta. Kitaguchi	Shinkawa—Shimohonjuku	Odakyu Bus
		4	Kichi 06	Chofu Sta. Kitaguchi	Jindaiji Shokubutsukoen mae	Odakyu Bus

### Mitaka Station

Bus stop	Route	Destination	Via	Bus Company
North Exit	1 Taka 01-02-03	Kitaura/Musashiseki Sta./Tanashi Hashiba	Shimin Bunka Kaikan iriguchi/Musashino Shiyakusho	Kanto Bus
	2 Taka13	Yagisawa Sta.	Shimin Bunka Kaikan iriguchi/Musashino Jutaku	Kanto Bus
	3 Taka 30-33	Musashisakai Sta./Musashi Koganei Sta.	Shimin Bunka Kaikan iriguchi/Musashino Daigaku	Kanto Bus
	4 Taka40	NTT Musashino Research and Development Center	Direct Route / Musashino Shiyakusho / Musashino Jutaku (Note varying operation time tables)	Kanto Bus
	5 Taka 21-22	Tenjinryama / Hibarigaoka Sta.	Hoya Sta. Minamiguchi / Tanashicho 2-chome/Sumiju-mae	Kanto / Seibu
	6 Mubus	Mitaka Station Northwest route / Mitaka-Kichijoji route Sakai-Mitaka route		Kanto Bus Odakyu Bus

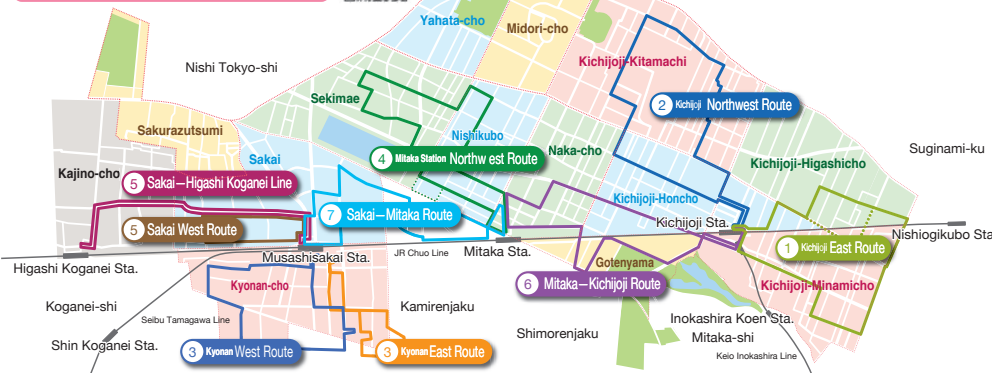
### Musashisakai Station

Bus stop	Route	Destination	Via	Bus Company	
North Exit	1	Sakai03	Hibariagaoka Sta.	Tanashi Sta. • Yato	Seibu Bus
	2	Sakai04		Midoricho 2-chome Hibariagaoka Danchi	
	3	Taka30	Mitaka Sta.	Musashino Daigaku	Kanto Bus
	4	Hanagokoganei Sta. Minamiguchi	Musashi Koko / Koganei Koen Higashiguchi		Kanto Bus
	4	—	Musashino Eigyosho	Musashino Daigaku/Gochu mae	Kanto Bus
	5	Sakai12	Mukodaicho 5-chome		
	5	Sakai17	Vi. GARDEN Nishi Tokyo	Musashi Koko/Sakaibashi	Kanto Bus
	6	Sakai21	Danchi Josuibata	Sakurazutsumi Danchi iriguchi	Odakyu Bus
	0	Mubus	Sakai West Route/Sakai-Higashi Koganei Line/ Sakai-Mitaka Route		Odakyu Bus
	0	Mubus	Kichijoji Sta.	Osawa / Shinkawa	Odakyu Bus
South Exit	4	Kichi 01	Kyonan West Route/Kyonan East Route/ Kyonan West Route (Stops at Musashino Eigyosho)		Odakyu Bus
	0	Mubus			Odakyu Bus



### What is MuBus?

MuBus is a local community bus mainly running through areas around Kichijoji Station, Mitaka Station North Exit and Musashisakai Station. It offers seven different routes. The name MuBus came from rhyming with “MOVE US” and also taking the “Mu” from Musashino. It's a small bus, 7 meters tall and 2 meters wide, which fits 29 people. It has been running since 1995 and it is 100 yen a ride.



### Column | A pop, illustrated Kanto Bus!

Out of all 400 vehicles from Kanto bus, there is one that is different. It's a bus specially featured by an illustrator Shiotani Kin who lives in Musashino city. The theme is “city and nature combined”, so on one side of the bus you will see the modern view of Kichijoji and on the other side you will see the nature aspect of the city such as Inokashira Park. It will definitely be a rare experience if you can spot it!



Mainly seen around Kichijoji Station and Mitaka Station, with an occasional visit to Musashisakai Station.



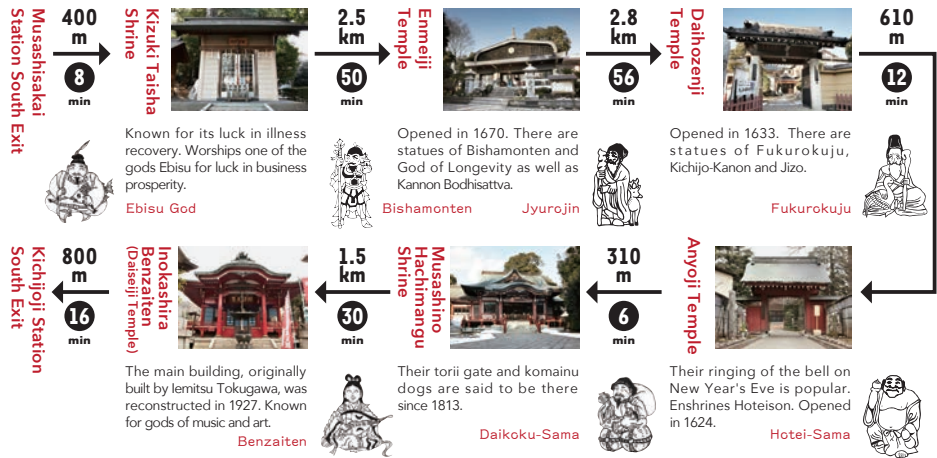
A friendly local transportation service, “Community bus”.

## Visitor's Information Recommended Routes

There are different ways to enjoy Musashino city whether to see the culture, history or nature. Here are three different examples, with specific distance and time required, of how you can use your day. They are all doable in just half a day and great for some nice relaxing walk.

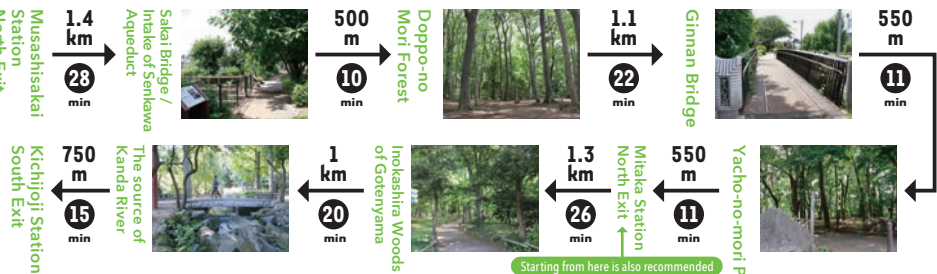
### 1 Musashino-Kichijoji Seven Gods of Fortune Route

[Total Distance] About 9km [Time for walking] About 3 hours (It does not include the time of your stay at each destination)



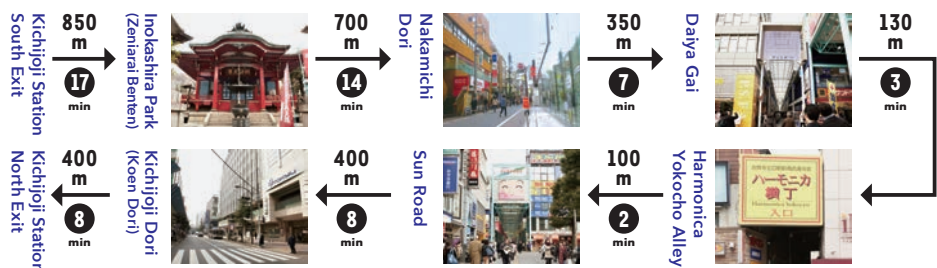
### 2 Nature route with water and greens

[Total Distance] About 7km [Time for walking] About 2 hours (It does not include the time of your stay at each destination)



### 3 Stroll route through Inokashira Park and Kichijoji

[Total Distance] About 3km [Time for walking] About 1 hour (It does not include the time of your stay at each destination)





## Available Services

### Car Rentals

- NIPPON Rent a Car, Kichijoji Store  
2-2-6 Kichijoji-minamicho, Musashino-shi  
Phone: 0422-49-3900
- ORIX Rent a Car, Kichijoji Station Store  
1-6-7 Kichijoji-minamicho, Musashino-shi  
Phone: 0422-24-6381
- NICONICO Rent a Car, Kichijoji-minami Store  
3-5-3 Kichijoji-minamicho, Musashino-shi (ENEOS Gasoline Stand) Phone: 0422-45-6400
- NISSAN Rent a Car, Mitaka Station Store  
1-23-17 Naka-cho, Musashino-shi Phone: 0422-37-2323
- TOYOTA Rent a Car, Musashisakai Store  
1-10-10 Sakai, Musashino-shi Phone: 0422-55-0100

### Bicycle Rentals

- Hello Cycling  
※ Requires registration  
[Cost] STemporary Use: 130 yen for the first 30mins, after that 100 yen per 15 mins.  
Check below for member registration or cycle stations' map.  
Read QR code   
Website: <http://www.hellocycling.jp>

### Coin Lockers

- 3 near Kichijoji Station exits
- 4 around Kichijoji Station
- 2 inside Mitaka Station gates
- 2 around Mitaka Station
- 1 near Musashisakai Station North Exit direction

### Currency Exchange

- World Currency Shop  
・ Kichijoji Branch inside atré Kichijoji East bldg. 2F; 1-1-24, Kichijoji-minamicho, Musashino-shi  
Phone: 0422-22-2259  
Open: 10AM-6PM

### Stroll Rentals

The city offers a free stroll rental service for you to be able to walk and shop around Kichijoji station with children.

[Rental Spots]

- Kichijoji Parking Plaza (Public Bicycle Parking)

[Available Hours] 10AM-6PM [Cost] Free

[Area of Use] Around Kichijoji Station

※ You will need to provide your contact information to use the service.

※ No reservations accepted.

※ Return to the same place of rental.



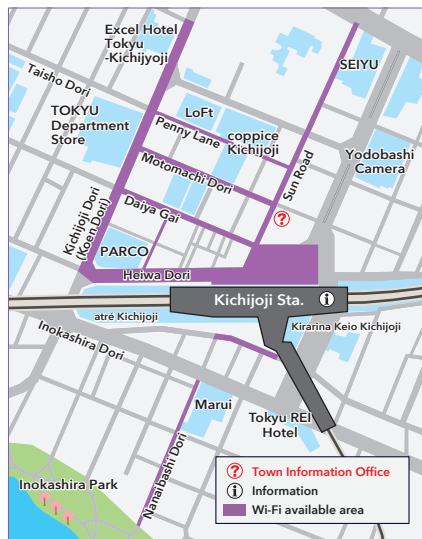
### Free Wi-Fi

There is public Wi-Fi provided in the main parts of Kichijoji for free.

Read QR code on how to connect to Kichijoji Free Wi-Fi

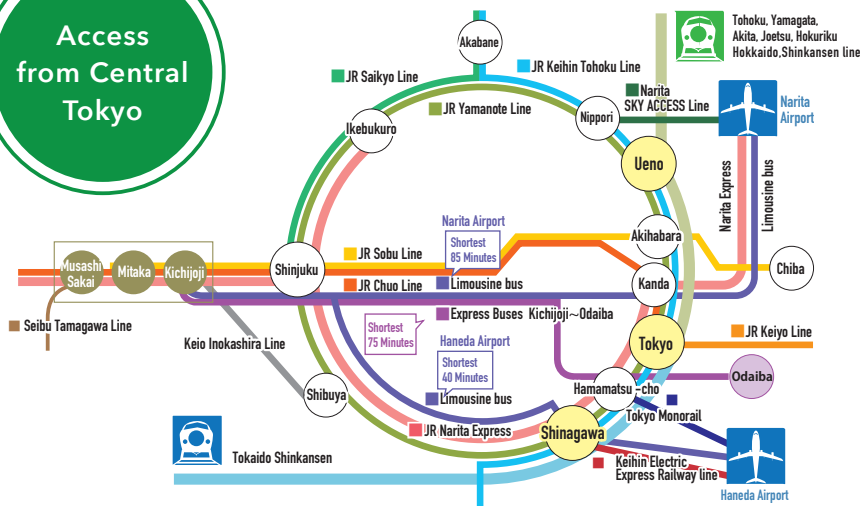


SSID: #KichijojiFree



There is also free Wi-Fi available inside Mitaka Station and other shops that offer the service.

## Access from Central Tokyo



JR Musashi-sakai Sta.

33 minutes from Tokyo Station, 21 minutes from Shinjuku Station

JR Mitaka Sta.

31 minutes from Tokyo Station, 19 minutes from Shinjuku Station

JR Kichijoji Sta.

29 minutes from Tokyo Station, 17 minutes from Shinjuku Station, 19 minutes from Shibuya Station Keio Inokashira Line

※ The ride time using the Chuo Line Rapid Service.



## Musashino city Visitor's Guide vol.04 (English) | Kichijoji | Mitaka North Area | Musashisakai |

Published | September 2022  
Publisher | Musashino city urban tourism corp.  
Musashino commerce and Industry Bulling 1F;  
1-10-7 Kichijoji-honcho, Musashino-shi  
Phone: 0422-23-5900  
Open: 9AM-6PM Open all year around  
(Except New Years season).  
kanko\_office@musashino-kanko.com  
Website: <http://musashino-kanko.com/>  
Printed by | BUN-SHIN Co., Ltd.

Planned and Edited by  
| Map Project Committee, Bunshin-Publishing,  
Designed by | Daiki Akema (officence)  
Illustration by | Chiemi Inaba, Aya Ogaki (officence)  
Photos by | Akira Hasegawa