

Welcome to Kichijoji

Located about 17 min. from Shinjuku or Shibuya, Kichijoji is surrounded by multiple shopping buildings, commercial streets, restaurants, fashionable sundry goods shops, and other unique shops. Dotted with jazz coffee shops and live houses, Kichijoji is famous as the home of many creators and the birthplace of subcultures. It has also given rise to many works of animation. Inokashira Park, an urban oasis, offers enjoyment including boats and art markets. Kichijoji is a town where the diverse elements of fashion, gourmet dining, culture, and nature come together.

Best Spots



Statue of Hanako

This is a new famous spot in the Kichijoji Station North Exit plaza. Raised in Inokashira Park Zoo, Hanako the elephant was beloved by many. At the end of her 69 years, the statue was erected with contributions from around Japan and with funds from Hanako's home country of Thailand. The sight of Hanako, with her length of 2.5 m, her right trunk leg off the ground, and her long trunk raised in greeting, makes the statue a popular photo spot.

Harmonica Yokocho

Harmonica Yokocho is an area of shop-filled narrow alleys, just outside the North Exit of Kichijoji Station. In this space, every day is like a festival. The diverse jumble of small shops bustle with people, creating a deep, retro view of the world that takes you back to the Showa Period. The mood is that of Asian street stalls or a night market. Visitors can have fun at Harmonica Yokocho day or night.



Inokashira Park

This suburban park, with Inokashira Pond at its center, greeted its 100th anniversary in 2017. Surrounded by trees, it is truly an urban oasis. The park encompasses famous locations such as the Inokashira Benzaiten shrine, and is enjoyed by people of all ages who visit to enjoy walks throughout the seasons. It preserves precious nature amid residential and commercial areas, providing local people with a place for relaxation.



Inokashira Park Zoo (Main park + Park annex)

This zoo raises many animals native to Japan, making special efforts toward the breeding of the Amur cat and other rare species. In addition to the zoo is an amusement park and a park with works by sculptor Seibo Kitamura. The park annex on the Inokashira Pond side is a park for aquatic life, and contains a freshwater fish aquarium. Breeding activities also take place, focused on water fowl.

Park hours: 9:30-17:00 (entrance until 16:00) / Entrance fee: Adults ¥400/Annual Passport ¥1600 / Junior High School Students ¥150/No Annual Passport Above 65years old ¥200/Annual Passport ¥800 / Closed: Monday (following day if a holiday), Year-end / New Year holidays (12/29-1/1)



Inokashira Benzaiten

In the Edo Period, the god Benzaiten gathered worshippers as a god of entertainment and as the water god at the source of the Kanda Aqueduct. The shrine became a resort spot for the people of Edo. On stone lanterns and other objects, you'll find the names of Edo Period merchants who were involved in water.

Ghibli Museum, Mitaka

This maze-like animation art museum is by Studio Ghibli. Entrance is by reservation only, at specified time. Hours: 10:00-18:00 / Closed: Tuesday / See the website below for details of purchasing tickets. http://www.ghibli-museum.jp/

1 Ozasa (D-2) 2 Yushoku Taigashi shop (D-2) 3 Kichijoji Tsukada Suisan (D-2)

7 LIBERTÉ PÂTISSERIE BOULANGERIE (C-2) 8 SOYBEAN FARM (C-3) 9 North European food restaurant ALLT GOTT (C-2)

13 Woodberry's Marche (D-2) 14 Kichijoji Curry restaurant Mamezou (C-2) 15 The head restaurant ISEYA (C-3)

19 Trattoria e Pizzeria MOTHERS (D-3) 20 König (D-3) 21 ISENTEI (C-4)

25 Sippo (C-1) 26 Cafe du Crepuscule Kichijoji (A-2) 27 Hanako Cafe (B-4)

4 BECKEREI KAFFEE (D-2) 5 Kugutsu-sou (C-2) 6 Spakichi (D-1)

10 Cat Cafe Temari-no-Ouchi (C-2) 11 TANAKA TEI (C-2) 12 Cafe Amrita (C-2)

16 Yuriapemuperu (D-3) 17 Hanami Sembei (D-3) 18 Boulangerie Bistro EPEE (D-3)

22 Café Lumiere (D-4) 23 CAFE ZENON X ZENON SAKABA (E-2) 24 HATTIFNATT (E-2)

28 SILVER ELEPHANT (C-2) 29 SOMETIME (D-2) 30 STAR PINE'S CAFE (D-2)

34 Maker's Watch Knot (B-2) 35 Cave (C-2) 36 free design (C-2)

37 (Saburo) (C-2) 38 Wickie (B-2) 39 XYL (C-1)

40 atré Kichijoji (D-2) 41 kirarina keio kichijoji (D-2) 42 Tokyo Department Store, Kichijoji Store (C-2)

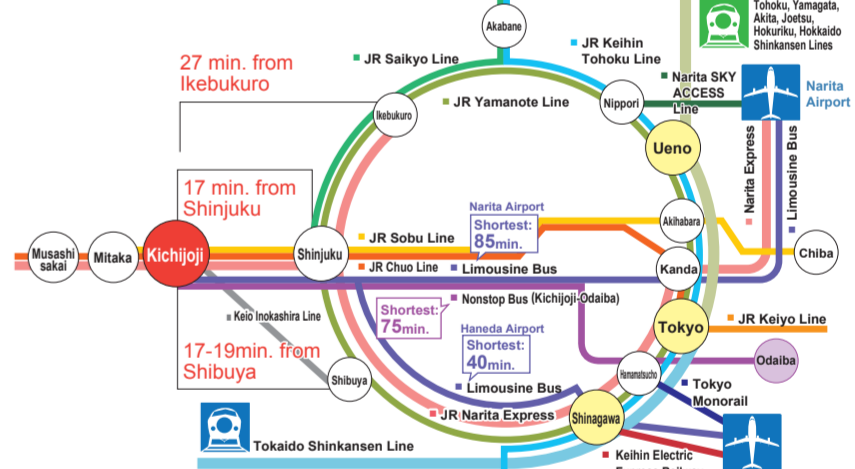
43 coppice KICHIJUJI (D-2) 44 Kichijoji PARCO (C-2) 45 KICHIJUJI Loft (C-2)

46 Marui Kichijoji Store (D-3) 47 UNIQLO Kichijoji Store (C-2) 48 SEIYU Kichijoji Store (D-2)

Commercial use of this map or any part of this map is prohibited. For secondary use, except private use, contact us at Musashino City Urban Tourism Corp.

Kichijoji! Musashino city English Area Map. QR code for more information. Let's enjoy walking the town!! Shopping!!

Access

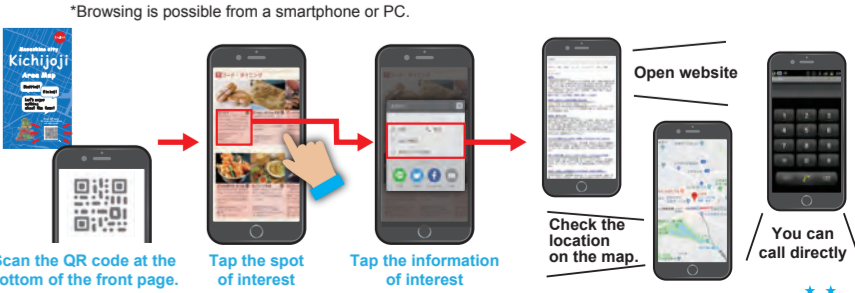


Bus Tables



Table with columns: Bus stop, Route, Destination, Via, Bus Company. Lists routes 1-14 and 20-24 with their destinations and companies like Kanto Bus, Keisei, and Odakyu Bus.

Check out the details of spots on the website!



Look at these colors to categorize the type of shops. Food and Dining Miscellaneous goods Entertainment Shopping Animation

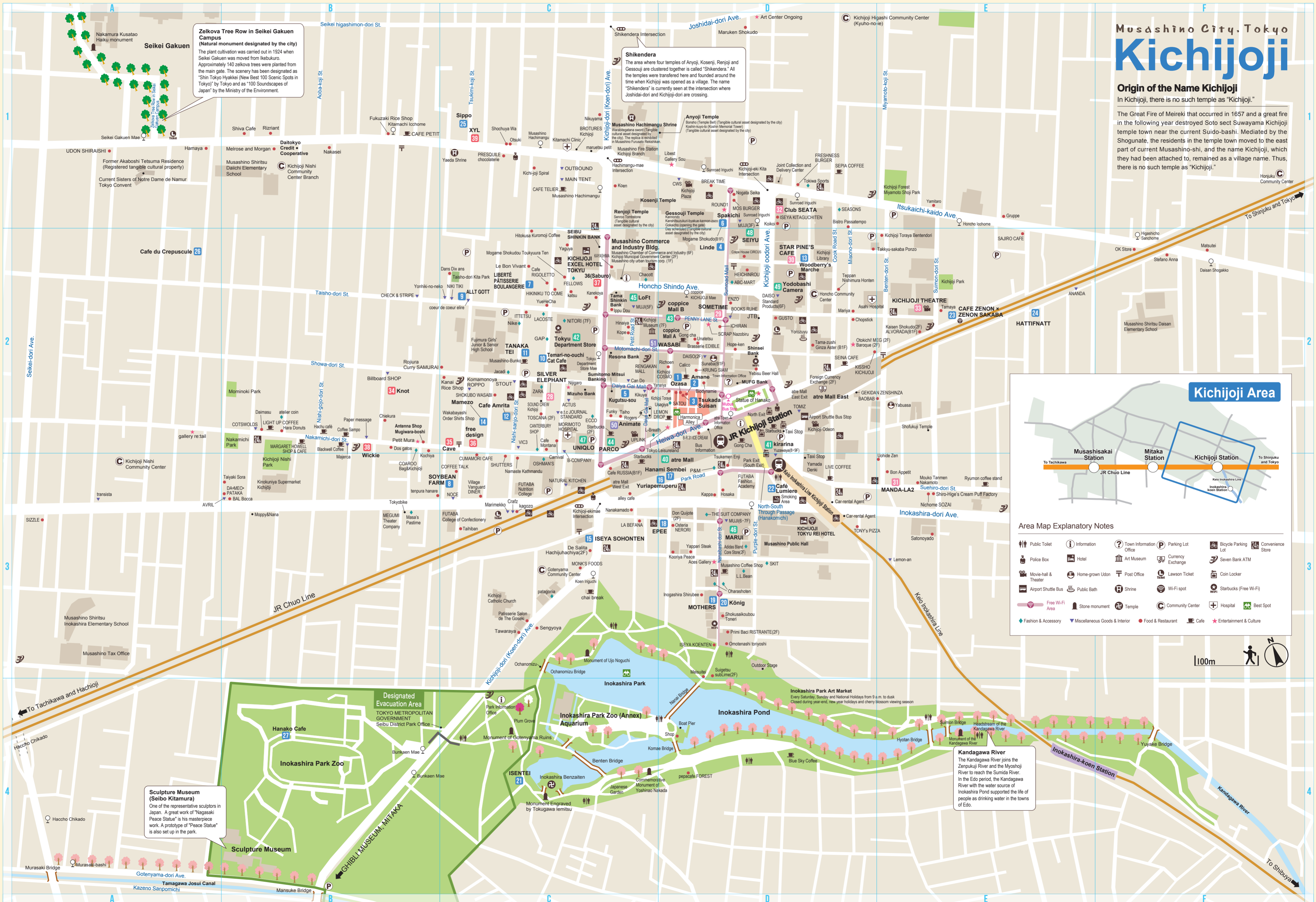
Date of issue: November Reiwa 4 (2022) 5th edition. Publisher: Musashino City Urban Tourism Corp.

Musashino City, Tokyo

Kichijoji

Origin of the Name Kichijoji
In Kichijoji, there is no such temple as "Kichijoji."

The Great Fire of Meireki that occurred in 1657 and a great fire in the following year destroyed Soto sect Suwayama Kichijoji temple town near the current Suido-bashi. Mediated by the Shogunate, the residents in the temple town moved to the east part of current Musashino-shi, and the name Kichijoji, which they had been attached to, remained as a village name. Thus, there is no such temple as "Kichijoji."



Zelkova Tree Row in Seikei Gakuen Campus
(Natural monument designated by the city)
The plant cultivation was carried out in 1924 when Seikei Gakuen was moved from Ikebukuro. Approximately 140 zelkova trees were planted from the main gate. The scenery has been designated as "Shin Tokyo Hyakkei (New Best 100 Scenic Spots in Tokyo)" by Tokyo and as "100 Soundscapes of Japan" by the Ministry of the Environment.

Shikendera
The area where four temples of Anyoji, Kosenji, Renjoji and Gessouji are clustered together is called "Shikendera." All the temples were transferred here and founded around the time when Kichijoji was opened as a village. The name "Shikendera" is currently seen at the intersection where Joshidai-dori and Kichijoji-dori are crossing.

Sculpture Museum (Seibo Kitamura)
One of the representative sculptors in Japan. A great work of "Nagasaki Peace Statue" is his masterpiece work. A prototype of "Peace Statue" is also set up in the park.

Kandagawa River
The Kandagawa River joins the Zenzukiji River and the Miyoshoji River to reach the Sumida River. In the Edo period, the Kandagawa River with the water source of Inokashira Pond supported the life of people as drinking water in the towns of Edo.



Area Map Explanatory Notes

