

April, 2023 Grand opening of Tokyu Kabukicho Tower

The birth of a new landmark of Shinjuku

Kabukicho in Shinjuku, one of the popular entertainment districts in Tokyo, will see the opening of "Tokyu Kabukicho Tower," one of the biggest entertainment facilities in Japan, on April 14, 2023. Consisting of a hotel (due to open on May 19), a movie theater, a theater, a live music venue, and others, this facility will be in a skyscraper building of about 225 meters in height with 48 floors above ground, five floors underground, and a penthouse. It will also have a night entertainment facility "ZEROTOKYO" in the basement. It will be a place where you can expect to enjoy completely new types of performances by artists from Japan and other countries incorporating music, DJs, scenography, and performance. Other unique tenants, including a tourist information center and an entertainment food hall, are also due to open.

As the first round of the opening, an event called "EVANGELION KABUKICHO IMPACT" will start on April 28, where you can enjoy experiencing the world of "Evangelion," one of the most popular anime series in Japan, in various ways, including the theater, movie theater, live music events, and hotel.



🚶 Seibu-Shinjuku Sta. (Seibu), Shinjuku Sta. (JR, Subway, Keio, Odakyu) tokyu-kabukicho-tower.jp/en/

Summer, 2023 Opening of a facility to experience the world of the "Harry Potter" movies!



'Wizards World' and all related names, characters and indicia are trademarks of and © Warner Bros. Entertainment Inc. - Wizards World publishing rights © J.K. Rowling.

"Warner Bros. Studio Tour Tokyo - The Making of Harry Potter"

"Warner Bros. Studio Tour Tokyo - The Making of Harry Potter" is scheduled to open in the summer of 2023. It is a walk-through entertainment facility, where you can see real costumes and props used in the worldwide popular film series of "Harry Potter" and "Fantastic Beasts" on display. Through the real sets of film art and interactive experiences, you can actually experience the behind-the-scenes production and know how the stories filled with magic were created.

*Reservation is required.

🚶 Toshimaen Sta. (Seibu, Subway) www.wbstudiotour.jp/en/

 New hotels to open soon

May 19, 2023 (538 rooms)
HOTEL GROOVE SHINJUKU, A PARKROYAL Hotel
www.hotelgroove.com/global/

Mar. 31, 2023 (95 rooms)
karaksa hotel colors Tokyo Yaesu
karakساهotels.com/en/tokyoyaesu/

2023 (140 rooms)
lyf Ginza Tokyo
www.discoverasr.com/en/lyf/japan/lyf-ginza-tokyo

Information on permanently/temporarily closed businesses



Closed in July 2023
Nakano Sunplaza
It is scheduled to be closed in July 2023 and redeveloped and to re-open as a large-scale complex facility in 2028.
www.sunplaza.jp/en/

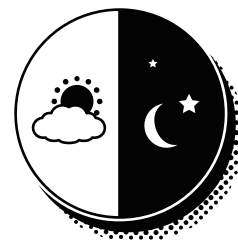


The Official Tokyo Travel Guide
GO TOKYO
www.gotokyo.org/en/



Have fun for a whole day!

Daytime

central
areaA day to enjoy art and traditional performing arts
in **Marunouchi and Nihonbashi**

The Marunouchi/Nihonbashi area is one where traditional culture and new culture meet. It is a perfect place to come into deeper contact with the “beauty” of Tokyo.



A museum and shopping tour

Seikado Bunko Art Museum



Seikado Bunko Art Museum

Opened in October, 2022 in Marunouchi after relocation, this museum has a collection of antiquities from Japan and other Asian countries, including seven national treasures and 84 important cultural properties. The museum is especially famous for having one of the only three remaining tea bowls called “Yohen Tenmoku”, which are all designated as national treasures.

www.seikado.or.jp/english/

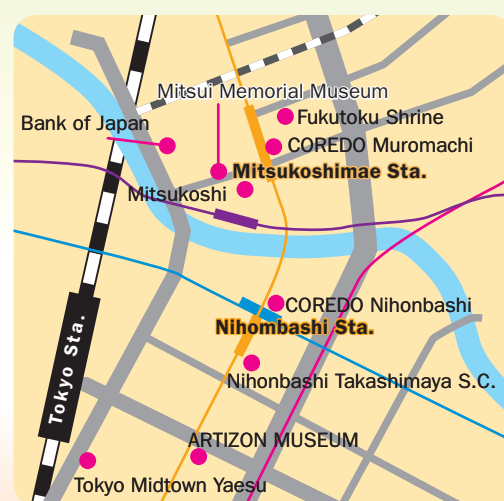
COREDO Muromachi Terrace



This shopping complex has various shops and restaurants, from long-established ones to trendy ones. Make sure to check out “Nippon Department Store: Nihonbashi Sohonten,” where you can find traditional craftwork, sundry goods, and food items from all over Japan. There are other types of shops where you can experience glass-sculpture making and accessory making.

mitsui-shopping-park.com/urban/coredo-muromachi/e/

This area has more to see!

Savor Japanese dishes and
traditional performance art in a stylish space

Suigian

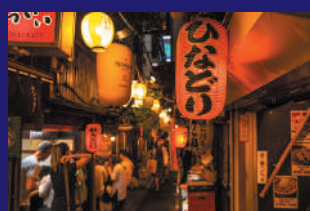
This restaurant/bar with a calm atmosphere is located underneath Fukutoku Shrine. There is a full-scale noh stage inside. Enjoy the Japanese traditional performance art up-close, along with delicious Japanese dishes expressive of seasonal beauty and nice sake. Pay attention to the time-honored dinnerware, which has been used at traditional Japanese restaurants for more than 100 years.

suigian.jp/en/

Bustling nighttime! **Yokocho culture in Tokyo**

A small alley or side-street lined with small drinking spots is commonly called “yokocho,” and the “yokocho” areas in Tokyo are crowded with people, mainly those who come after work to enjoy eating and drinking, every day. There is also a new type of yokocho, called “neo-yokocho,” which incorporates new senses and trends into the traditional yokocho culture, expanding the potential of yokocho for people to enjoy.

Omoide Yokocho



Shinjuku Sta. (JR, Subway, Keio, Odakyu),
Shinjuku-nishiguchi Sta. (Subway)

Ameyoko



Ueno Sta. (JR, Subway),
Okachimachi Sta. (JR)

Harmonica Yokocho



Kichijoji Sta. (JR, Keio)

Nighttime in Tokyo

If you want to enjoy yourself to the full in Tokyo, you should check out sightseeing spots both for daytime and nighttime. There are unique ways to enjoy nighttime in specific areas not only in central Tokyo but also suburban areas rich in nature.

suburban
area

Have an active day surrounded by nature on **Mt. Takao**



Hiking and visiting Yakuoin Temple

Mt. Takao



On Mt. Takao with a height of 599 meters, there are several hiking courses, allowing you to choose whichever suits your physical level. For hiking beginners, Trail 1 (Ichigoro) is recommended, which is relatively easy to walk on and has teahouses to take a rest along the way. On the way up to the summit, you will come across Yakuoin Temple, an old temple with a history of over 1,000 years. Drop by and make a prayer offering. From the observatory at the top of the mountain, you can have a great view of Mt. Fuji on a sunny day.

www.takaotozan.co.jp/

Another great point of Mt. Takao is that the summit is accessible by cable car or chair lift.



Have a toast at the beer garden and relax in an onsen

Mt. Takao Beer Mount

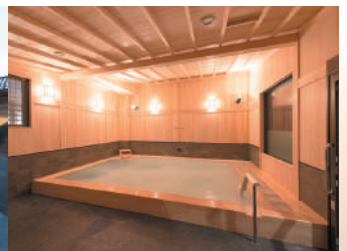


The summer feature of Mt. Takao is definitely the beer garden that is only open during a limited period between mid-June to mid-October! After enjoying hiking on the mountain, you can refresh yourself with a nice glass of beer. The night view is also great. (Open from 13:00 to 21:00 (tentative), 2-hour limit)

takaosan-beermount.com/



Keio Takaosan Onsen/ Gokurakuyu (drop-in onsen facility)



After being tired from hiking, you can go to an onsen to refresh yourself. At Keio Takaosan Station, there is an onsen facility named "Keio Takaosan Onsen/ Gokurakuyu." Surrounded by nature, relax in an open-air bath while feeling a pleasant evening breeze on your face. As the facility is directly connected to the station, you can easily take a train to go back to the Shinjuku area.

*Please avoid taking a bath after drinking and/or when you are drunk.

www.takaosan-onsen.jp/english/

**Ryu no Miyako Inshokugai,
Shinjuku Higashiguchi Yokocho**
Opened in October, 2022



With a total of 17 tenants mainly serving Asian dishes, this yokocho is known for its garish neon signs that boost your excitement.

Shinjuku Sta. (JR, Subway, Keio, Odakyu)
ryunomiyako.com/

Asakusa Yokocho
Opened in July, 2022



Enjoy Japanese food culture and festival culture at the same time! You can see live festival performances from all over Japan on weekends.

Asakusa Sta. (Subway, Tobu, Tsukuba Express)
asakusayokocho.com/

Kotora Komichi
Opened in January, 2022



Located in the vicinity of "Toranomon Hills," a landmark of Tokyo, this yokocho offers a great place to enjoy drinking at different drinking places at reasonable prices.

Toranomon Sta. (Subway), Toranomon Hills Sta. (Subway)
kotora.info/



Neo Yokocho

I live in Tokyo



4th

We are doing an interview series of foreigners who live in Tokyo, asking about attractive aspects of Tokyo. The fourth interviewee is H.K. from South Korea. She told us about recommended spots in Tokyo and her favorite way of enjoying Tokyo.

I am from South Korea. I was living in Japan and went back to my country before, but I came back to Tokyo because I missed living here. I always try to find time to go out in my busy schedule. What makes it possible is the convenient train system in Tokyo.

I usually use JR Keihin Tohoku Line. By taking this line, you can visit many parks and wonderful places. If you get off at Hamamatsucho Station, you can go to the Hama-rikyu Gardens, where you can enjoy beautiful seasonal flowers like cherry blossoms in spring as well as gorgeous autumn foliage in fall. The time I spend with a cup of matcha in a relaxing atmosphere at the small teahouse between the ponds brings me a feeling of tranquility.



Hama-rikyu Gardens

Shimbashi Sta. (JR, Subway),
Hamamatsucho Sta. (JR)
www.tokyo-park.or.jp/park/format/index028.html

I often get off at Tokyo Station, as probably do many other travelers. It is a place where many delicious things from all over Japan are available, but what I highly recommend is the view of Tokyo Station from nearby commercial facilities, such as KITTE and Shin-Marunouchi Building. If I see Tokyo Station from an open terrace or rooftop garden, I somehow feel more energetic and uplifted. The best part is that these places are free for admission.



The view of Tokyo Station



What's coming up after cherry blossoms Three best flower places from April to June



Cherry blossoms are the flower most representative of spring in Japan. While many people visit famous places for cherry blossoms in early April in Tokyo, there are various other kinds of flowers starting to bloom one after another from April to June in Tokyo. There are many places in Tokyo where you can enjoy beautifully blooming flowers along with unique scenery of Tokyo. Here are three selected "hidden gem spots" for enjoying beautiful flowers.

Japanese wisteria at Kameido Tenjin Shrine

kameidotenjin.or.jp/

Located near Kameido Station, which is about 10 minutes by train from Akihabara Station, this shrine is famous for gorgeous Japanese wisteria at their best from mid- to late-April. During this blossom season, the flowers are beautifully lit up at night (until 20:00). You may be able to take a great photo of wisteria blossoms with TOKYO SKYTREE in the background.

Kameido Sta. (JR, Toei)



Azalea at Nezu Shrine

www.nedujinja.or.jp/

Said to have more than 1,900 years of history, Nezu Shrine is one of the oldest shrines in Tokyo. About 3,000 azalea plants blossoming from mid- to late-April create an overwhelming view in the azalea garden. Walk along the path of the garden and enjoy various kinds of azalea with different colors and shapes in a relaxing atmosphere.

Nezu Sta. (Subway), Sendagi Sta. (Subway)



Hydrangea at Takahata Fudosen Kongoji Temple

www.takahatafudosen.or.jp/en/

This temple has more than 7,800 plants of hydrangea blooming from June to early July. You can enjoy the large-scale landscape together with the beautiful flowers, something which cannot be seen in central Tokyo. On the grounds of the temple, there are also many buildings, some of which have been designated as National Important Cultural Properties, so you will have lots to see there besides the flowers.

Takahata-Fudosen Sta. (Keio)



The Official Tokyo Travel Guide

GO TOKYO

www.gotokyo.org/en/



Editor's note

With a variety of things, such as expansive views, nature, valleys, and suspension bridges, Okutama is a popular destination throughout the year to enjoy hiking and mountain climbing. If you persevere a bit and climb up the mountain, and you will be rewarded by seeing a wonderful view! Located about only two hours from central Tokyo, packed with high-rise buildings, Okutama is a place you will want to visit again and again, showing different aspects of Tokyo.



TCVB News Letter is going to be discontinued after this issue. Thank you for reading our newsletter over a long period of time.

From now on, please make sure to register to subscribe to the web magazine "Tokyo Now." ml.tokyonow-newsletter.com/subscription

If you would like to receive our newsletters in a different language, please contact one of the representatives of the applicable market. www.gotokyo.org/en/agent/rep/index.html