

The background of the entire page is a photograph of a scenic mountain path. In the foreground, two hikers are walking away from the camera: a woman on the left wearing a blue cap and a black backpack, and a man on the right wearing a grey hat and a large tan backpack. In the mid-ground, another hiker with a red backpack is visible, looking through binoculars. The path is paved and leads through traditional Japanese wooden buildings with thatched roofs, surrounded by lush green trees and foliage.

Tokyo's Celestial Lodges

Guidebook of **Shukubo,** Shinto Priest Lodges in **Mt. Mitake**

Map of Mt. Mitake

Introduction of **Mt. Mitake,**
Musashi Mitake Shrine, and
Mitake Tozan Railway

Featuring **21** unique and historical
Shukubo for your stay

You are invited to
a relaxing and memorable
stay in rich nature and culture

Mt. Mitake

Mt. Mitake is a spiritual mountain in Ome city, Tokyo, historically worshiped as sacred. The elevation is 929m. It's also known as a sanctuary for wild birds, insects, and plants, and it shows unique beauty in every season.

Every summer, 50,000 Renge-Shoma flowers bloom beautifully.

Renge-Shoma



Day or night,
the vast view from another
world unfolds before your eyes.

Rock Garden



Beautiful streams wind through the Rock Garden, where waterfalls are used for meditation.

Enjoy the autumn leaves and at night you can relax to the serene sounds of Kantan, the Queen of Singing Bug. From the observatory, you can overlook the Tama area and even see the skyscrapers in Shinjuku and Tokyo Skytree. Please enjoy the gorgeous panoramic night view.

Nagaodaira



Various events are offered to feature the uniqueness of Mt. Mitake. These include the Renge-Shoma festival, nature workshops, insect observing workshops, Daidai Kagura and Takigi Kagura, traditional Shinto ceremonies, and the Celestial Ninja Experience.

Visitors of all ages appreciate Mt. Mitake through these activities or by enjoying the beautiful nature by hiking or climbing.

Daidai Kagura



Musashi Mitake Shrine

The shrine in one of the most sacred mountains in the Kanto area, famous for the Sacred Dog

Musashi Mitake Shrine is said to have been built more than 2,000 years ago. The divinity of wisdom and fortune, Kushimachi no Mikoto, is worshiped. Back in the year 736, monk Gyoki honored the deity Zao Gongen, and this practice flourished as "Shugendo" (mountain practice) and was adopted by the Kanto area's strong warlords. Many precious gifts of swords and armors in the treasure hall are now designated as national treasures or important cultural properties.



In the Edo era, when visiting shrines became prominent, the shrine became very popular for the divine Oguchi Magami, the sacred dog who protects from evil. Nowadays, people visit the shrine with their dogs to wish for their good health.

Shukubo

Stay at lodges of another world with great views overlooking Tokyo



In Mt. Mitake, there are Shukubo which are run by priests.

Some Shukubo feature beautiful historical buildings designated as tangible cultural properties. Some buildings have thatched roofs over 150 years old.

Each Shukubo has a unique altar and proudly serves warm-hearted meals with local ingredients such as homegrown vegetables, mountain vegetables, and local fish.



Shops and restaurants of Mt. Mitake

Many options
of local spe-
cialties and
delicious meals

The many shops in front of
the torii gate shop district
and along the approach to
Musashi Mitake are always
filled with hikers and visitors.



Torii-mae Shopping district

富士峰軒(Fujimine-ken)



宝亭支店 (Takaratei shiten)



古狸山 (Korisan)



亀屋 (Kame-ya)



駒鳥売店 (Komadori baiten)



千本屋 (Chimoto-ya)



紅葉屋 (Momiji-ya)



寿屋 (Kotobuki-ya)



Mitake Tozan Railway

By Mt. Mitake Cable car, you can reach Mitakesan St. (elevation 831m) from Takimoto St. (407m) in just 6 min. The average 22% gradient is the steepest in the Kanto area, and the most vertical angle is 25%. The temperature is around 6°C lower than in downtown Tokyo. It's like another world with no need for AC in summer.

You can ride a cable car with your pets and enjoy exploring Mt. Mitake with your lovely dog. There are freeze-dried Mitake soups and special limited cable car goods in the shop. You can use Pasma and Suica. Free Wi-Fi is offered.



From Mitakesan St., you can take a chairlift to the observatory platform, a picturesque spot. From there, the panorama of deep mountains and nature is right in front of you. On sunny days, you can see the whole Kanto Plain.

You can also enjoy the Ubuyasu sha shrine, the power spot that is believed to bring good luck for relationships, a Colony of Renge-Shoma flowers, as well as Otsukayama hiking.

The schedule and fare of the cable car

Schedule

Car runs **2 or 3** times
in an hour

(The cable cars leave at the same
time at Takimoto station
and Mitakesan station)

*Please check the timetable on the website.

*There will be more trains in high seasons.



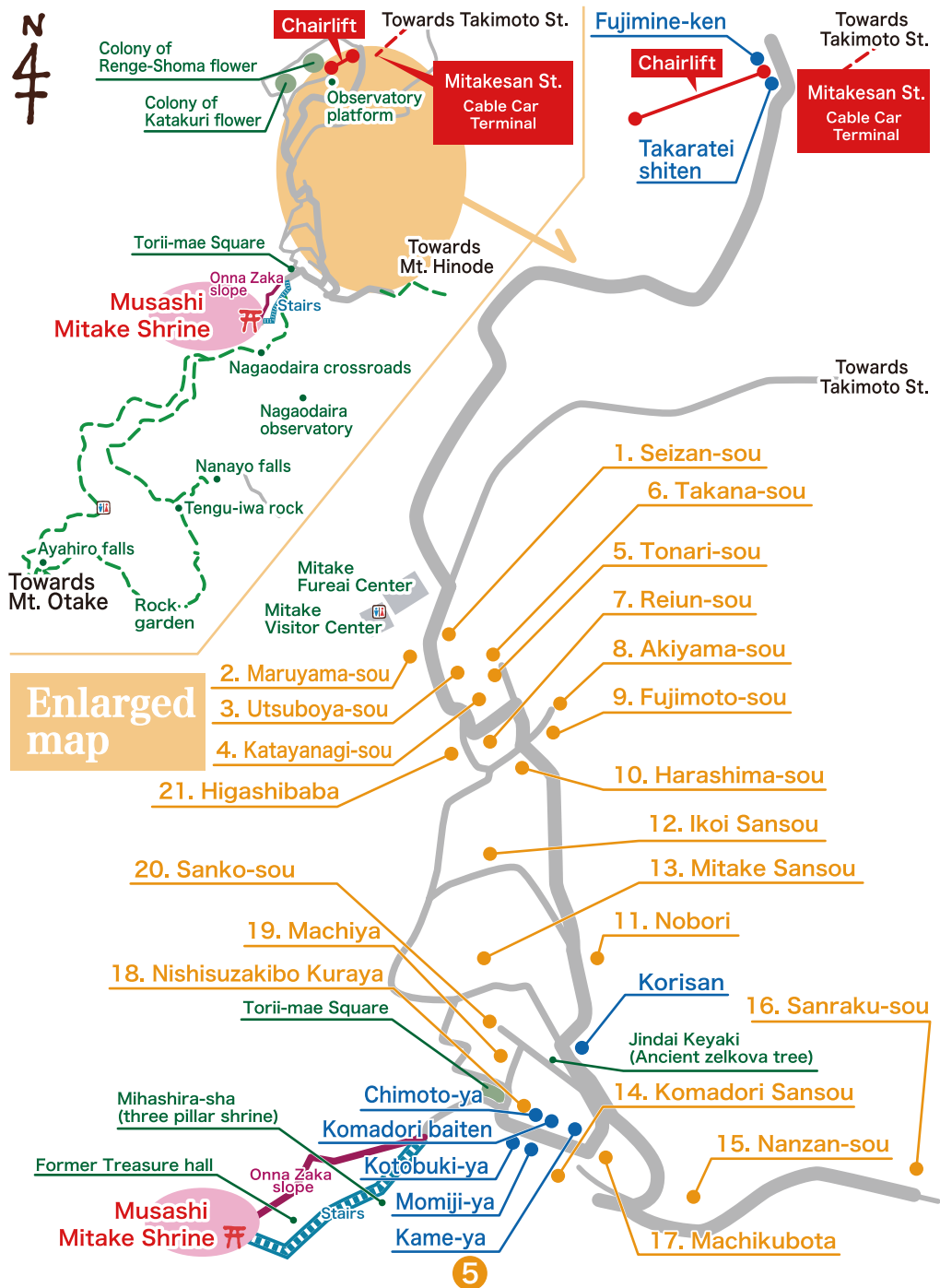
Fare

	Adult	Child
One-way	600 yen	300 yen
Round-trip	1,130 yen	570 yen

*The One-way ticket is valid only for the day. The Round-trip ticket is valid for two days and only for one round trip.

*There will be discounts for groups, people with disabilities, and pets. Please check the details on the website of Mitake Tozan Railway.

Map of Mt. Mitake Shukubo and shops



Contents

Introduction to Mt. Mitake	P1		
Musashi Mitake Shrine	P2	List of Featured Shukubo	P6
Mt. Mitake Shops	P3	About Shukubo and Meanings of Icons	P7
Mitake Tozan Railway	P4	Details of Shukubo	P8
Map of Mt. Mitake Shukubo and Shops	P5	Access	P29

List of featured Shukubo, Shinto Priest Lodges

- | | | |
|---|---|--|
| 1 静山荘
Seizan-sou
0428-78-8445 | 8 秋山荘
Akiyama-sou
0428-78-8463 | 15 南山荘
Nanzan-sou
0428-78-8449 |
| 2 丸山荘
Maruyama-sou
0428-78-8441 | 9 藤本荘
Fujimoto-sou
0428-78-8464 | 16 宿坊神乃家 山楽荘
Sanraku-sou
0428-78-8439 |
| 3 うつぼや荘
Utsuboya-sou
0428-78-8462 | 10 旅館 はらしま
Harashima-sou
0428-78-8973 | 17 町久保田
Machikubota
0428-78-9039 |
| 4 片柳荘
Katayanagi-sou
0428-78-8461 | 11 宿坊 能保利
Nobori
0428-78-8443 | 18 西須崎坊 蔵屋
Nishisuzakibo Kuraya
0428-78-8473 |
| 5 宿坊 登奈利荘
Tonari-sou
0428-78-8447 | 12 憩山荘
Ikoi Sansou
0428-78-8566 | 19 麻知家
Machiya
0428-78-8426 |
| 6 高名荘
Takana-sou
0428-78-8596 | 13 御岳山荘
Mitake Sansou
0428-78-8474 | 20 民芸の宿 山香荘
Sanko-sou
0428-78-8476 |
| 7 嶺雲荘
Reiun-sou
0428-78-8501 | 14 宿坊 駒鳥山荘
Komadori Sansou
0428-78-8472 | 21 東馬場
Higashibaba
0428-78-8446 |

About Shukubo, Shinto Priest Lodges in Mitake

Shukubo were initially lodging facilities for monks and worshippers of temples or shrines, and they were run by priests called "Oshi" in Mitake.

Mt. Mitake flourished through Mountain Religion (Mitake Religious Association), and "Oshi" spread the teachings to many worshippers. Since then, many shukubo, run by Oshi, have welcomed guests to Mitake to this day. Nowadays, shukubo accept regular guests as well.

The historical architecture and altars are unique in each lodge. Heartwarming meals made with homegrown or local ingredients will be a delight. You can also experience monk training, such as meditation or waterfall meditation.

Meaning of icons

Basic information

-  ^{*1} 00 Mitakesan, Ome city
-  ^{*2} 0428-78-0000
-  ^{*3} 00 Rooms
-  ^{*4} Irregular holidays
-  ^{*5} 00:00  ^{*6} 00:00
-  ^{*7} 8,800 yen per person
Breakfast & dinner included

^{*1} Address ^{*2} Phone number
^{*3} Number of Rooms ^{*4} Closed day
^{*5} Check-in ^{*6} Check-out
^{*7} Price ^{*All prices include tax.}

Facility details

-  ^{*8} No smoking  ^{*9} OK ^{*8} Smoking/Non Smoking
-  ^{*10} Guests only Jacuzzi bath ^{*9} Wi-Fi ^{*10} Bath
-  ^{*11} No ^{*11} Lunch
-  ^{*13} ^{*14} ^{*15} ^{*12}  ^{*12} Website (QR code)
-  ^{*14} Face towel ^{*13} Bath towel
-  ^{*15} Shampoo ^{*14} Face towel
-  ^{*16} Toothbrush ^{*15} Shampoo
-  ^{*17} Razor ^{*16} Toothbrush
-  ^{*18} Yukata ^{*17} Razor
-  ^{*19} Body soap ^{*18} Yukata
-  ^{*20} Rinse ^{*19} Body soap
-  ^{*21} Soap ^{*20} Rinse ^{*21} Soap
-  ^{*22} Room wear ^{*22} Room wear
-  ^{*23} Dryer ^{*23} Dryer

^{*}The information of Shukubo and other information are valid on Oct. 1st in 2021.
 Information could be changed. Please ask the facilities for the latest information.

01 Seizan-sou

Our shukubo has been run by priests since the Edo era and offers experiences of waterfall meditation, breathing methods, and crystal bowl healing for people who want to reset themselves and maximize their potential. The meal menu changes for the guests who join waterfall meditation. Please inquire for details.



The lodge where you can transform yourself through meditation and waterfall meditation

Specialty

Away from everyday life, please reflect and be aware of your true self. We have fasting, meditation, and waterfall meditation courses, and we welcome you.



Basic information

- 43, Mitakesan, Ome, Tokyo
- 0428-78-8445
- 5 Japanese-style rooms (13m, 23m)
- Irregular holidays
- 2:00 PM 11:00 AM
- Various plans available
8,800 yen per person
Breakfast & dinner included



Facility details

- No smoking OK
- Two guest-only baths for men and women
- No
- Amenities**
 - Face
 - Shampoo
 - Rinse
 - Body soap
 - Toothbrush
 - Razor
 - Towel
 - Hair dryer



02 Maruyama-sou

7 min. walk from the Mitakesan St. Please enter from Nagaya mon gate past the stone wall. You can overlook sacred trees from the guest room. The first floor has a large hall, used as a banquet venue. In early summer, new green leaves on the mountain are beautiful to see. In fall, you can listen to the peaceful sound of crickets, called Kantan. Please enjoy your stay.



The lodge with the landmark
Nagaya mon gate

Specialty

Enjoy the spectacular scenery of the forest right outside your windows.

Please enjoy a serene time in our lodge.



Basic information

- 51, Mitakesan, Ome, Tokyo
- 0428-78-8441
- 9 rooms
- Irregular holidays
- 3:00 PM 10:00 AM
- 9,900 yen per person
Breakfast & dinner included

Facility details

- No smoking OK
- Two guest-only baths for men and women Reservations required
- Lunch 3,300 yen~ Reservations required
- Amenities: Bath, Face, Shampoo, Rinse, Toothbrush, Towel, Body soap



03 Utsuboya-sou

Our shukubo is run by an Oshi priest. It has a homely and relaxing atmosphere and is only reserved for one group per day (two guests minimum). In our seasonal flower garden, you can enjoy Azalea, Dogtooth Violet, Gold Band Lily, Sekkoku Orchids, Lily of the Valley, and Renge Shoma. Wi-Fi is available, and it is an excellent environment for workation. Please inquire about a day trip workation.



The lodge where
you can forget busy
days and relax

Specialty

With our warmhearted meals made from homegrown organic vegetables and seasonal mountain vegetables, you can taste the bloom and scent of the season. Homemade Konnyaku sashimi, made from Konnyaku potato, is also our specialty.



Basic information

- 50, Mitakesan, Ome, Tokyo
- 0428-78-8462
- 3 Japanese-style rooms (10m², 13m², 27m²)
- Irregular holidays
- 3:00 PM 10:00 AM
- 8,800 yen per person
Breakfast & dinner included
Two guests minimum



Facility details

No smoking Wi-Fi OK

Guests-only bath

Lunch 2,200 yen~

Reservations required



04 Katayanagi-sou

8 min. walk from Mitakesan St., you will find us right after entering the village. We use homegrown vegetables and seasonal ingredients. Our famous Konnyaku sashimi is made from Konnyaku potatoes grown in the mountains. We also offer workshops to cook them. The homely hospitality and atmosphere make you want to come back. Please enjoy a relaxing time in Mt. Mitake, where it is quiet and the sound of birds echos.

Have a relaxing stay
at the lodge with
homely hospitality



Specialty

Morning coffee, made from ground beans and with mountain spring water, will be served for the guests for a wonderful morning. Our homemade coasters are great for a souvenir. Fried bread with kinako powder and Tsumami zaiku crafts are also very popular.



Basic information

-  56, Mitakesan, Ome, Tokyo
-  0428-78-8461
-  9 Japanese-style rooms(10m, 13m, 17m)
1 Japanese-style hall (52m)
-  Irregular holidays
-  3:00 PM  10:00 AM
-  9,000 yen per person
Breakfast & dinner included
*Two guests minimum



Facility details

-  No smoking  OK
-  Guests-only Jacuzzi bath
-  1,100 yen ~
Reservations required (3 days prior)
- 
- Amenities**
 -  Bath
 -  Face
 -  Shampoo
 -  Rinse
 -  Body soap
 -  Towel
 -  Razor
 -  Soap
 -  T-shirt
 -  Dryer



05 Tonari-sou

As an Oshi priest who shares the belief of Musashi Mitake Shrine, this shukubo is run by the 16th Oshi. From a Japanese-style relaxing guestroom window, you can enjoy a panoramic view and a chorus of wild birds. The bath has 24-hour access until checkout, and the effect of Tourmaline in the tub makes you warm to the core.

We welcome you with wholehearted meals made with local and seasonal fresh ingredients, homemade konnyaku, homegrown vegetables, and tempura of mountain vegetables.



Be healed by glittering nightscapes and wake to beautiful bird song

Specialty

Enjoy the daytime view of the sky and forest, and at night see the starscape above the Kanto plain. In the facility, there are more than 1,000 mangas. In the summer, we will support your night insect hunting.



Basic information

- 49, Mitakesan, Ome, Tokyo
- 0428-78-8447
- 7 Japanese-style rooms (10m², 13m², 17m²)
- Irregular holidays (Please call to check the dates)
- 3:00 PM 10:00 AM
- 9,000 yen per person
Breakfast & dinner included
6,000 yen per person without meals
Two guests minimum Please inquire about the price for children



Facility details

- No smoking OK
*Designated smoking space available
- Guests only bath
Available 24h (until check out)
- Lunch 3,300 yen ~ Reservations required (For more than 2 people)



06 Takana-sou

Mt. Mitake is gifted with great scenery in each season. You can see deep mountains and enjoy birds singing from your quiet room. The window in the bath facing the forest can be opened, and many guests enjoy the fresh air and scent of trees. Please truly enjoy the amazing nature. We welcome retreats, workshops, and seminars as well.



The lodge with a great night view

Specialty

We hope to serve you a heart-warming seasonal meal with homegrown vegetables and offer homely hospitality where you can relax.



Basic information

- 48, Mitakesan, Ome, Tokyo
- 0428-78-8596
- 10 Japanese-style rooms (10m², 13m²)
- Irregular holidays
- 3:00 PM 10:00 AM
- 9,900 yen per person
Breakfast & dinner included



Facility details

- No smoking
*Outdoor smoking space available
- OK
- Guests-only
-
- No
- Amenities: Bath, Face, Shampoo, Rinse, Body soap, Towel/rash, T-shirt, Hair dryer, Soap



07 Reiun-sou

8 min. walk from Mitakesan station; the Reiun-sou in the shukubo village has served people visiting Musashi Mitake Shrine since the Edo period. Away from busy days in the city, people find peace in nature and culture. We will keep your luggage for early arrival or morning hiking the next day. We have information for events and seasonal viewing spots, so please ask. We hope you will enjoy your trip to Mitake.



The lodge 3,000 feet
above the clouds

Specialty

All rooms are Japanese-style rooms, and we hope you will have a relaxing time. Not only do we host families, but we also host groups, retreats, and seminars. We welcome you with meals in which you can taste the freshness of the ingredients.



Basic information

- 57, Mitakesan, Ome, Tokyo
- 0428-78-8501
- 8 rooms
- Irregular holidays
- 3:00 PM 10:00 AM
- 9,900 yen per person
Breakfast & dinner included



Facility details

- No smoking OK
- Guests-only bath
- 3,300 yen ~ Reservations required



08 Akiyama-sou

A 10 min. walk from Mitakesan St.; the lodge was built in the later Edo period. The building still holds the enchanting atmosphere from olden times. You can feel the outside nature while staying in a comfortable room. Especially in summer, it's a treat to be able to feel the eastern breeze go through the garden.

We only accept one group per night, so please enjoy your private stay with your family or friends. There will be a discount for a group stay, like a retreat. Please inquire.



The lodge where traditional Japanese living remains



Specialty

The bathroom, which you can reach from the main house, has a delicate wickerwork ceiling like a tearoom. We serve heartwarming meals which we take care to balance nutritionally. The whole lodge is reserved for only one group per night, so please enjoy your private stay.



Basic information

- 59, Mitakesan, Ome, Tokyo
- 0428-78-8463
- 8 Japanese-style rooms (12.6m², 13m², 17m², 21m²)
- Irregular holidays
- 3:00 PM 10:00 AM
- 9,900 yen per person
Breakfast & dinner included
*Two guests minimum

Facility details

- Smoking room available OK
- Guests-only bath
- Gozen lunch 1,320 yen~ or Kaiseki lunch 2,200 yen~
Homemade cake sets 1,100 yen~
- Amenities: Bath, Face, Shampoo, Soap, Toothbrush, Towel, Hairdryer



09 Fujimoto-sou

The name Fujimoto-sou originated in "Fujimoto Inari shrine," located at the lodge entrance. We mainly cook homegrown vegetables and fresh seasonal ingredients to make seasonal meals, such as Konnyaku sashimi, stewed trout, sweet simmered chestnuts, and simmered daikon radish. It's a simple lodge, but we always make our space a place where our guests can relax.



The lodge famous for delicious meals
Reservation for lunch is welcomed

Specialty

We are a family-run shukubo. The owner is a priest and works in the garden, and the proprietress cooks and welcomes the guests. Our heart-warming meals are famous for being simple but bringing out the best of the ingredients, creating memorable flavors. Please enjoy the meal and enjoy your stay.



Basic information

- 64, Mitakesan, Ome, Tokyo
- 0428-78-8464
- 6 rooms
- Irregular holidays
- 3:00 PM 10:00 AM
- 11,000 yen per person
Breakfast & dinner included
*Seasonal rate may be applied

Facility details

- No smoking OK
- Large guests-only bath
- 2,200 yen ~
Various menus are available.
- Reservations required
We adopt for your budget
- Amenities: Bath, Face, Shampoo, Body soap, Towel, Towel rack
-



10 Harashima-sou

The lodge is settled between Mitakesan St. and the shrine. The quiet atmosphere is like a hermitage. Surrounded by nature changing by the seasons, you can enjoy the nice breeze from the mountains and the songs of birds. For lunch or stay, we welcome you with our hospitality. Our lodge is favored by people who visit the shrine or enjoy hiking and picnicking or for retreats.



A cozy and homely hermitage



Specialty

Taste the seasons in Kaiseki cuisine with harvests of the mountain. There is also a Cypress wood bath and a Rock bath, in which you can enjoy both the atmosphere and the positive effects. Nature's panoramic view spreads from the room windows, where you can truly enjoy the beauty of Mt. Mitake.



Basic information

-  65, Mitakesan, Ome, Tokyo
-  0428-78-8973
-  6 Japanese-style rooms
-  Irregular holidays
-  3:00 PM  10:00 AM
-  8,800 yen per person
Breakfast & dinner included
*Two guests minimum

Facility details

-  Designated smoking space available  OK
-  Cypress wood bath and Rock bath
Public day-time bath: Only for lunch customers and guests
-  3,300 yen ~
3 lunch courses are available



II Nobori

Since olden times, Mt. Mitake has been a mountain of faith. The lodge is nestled in the mountain, and you can have a relaxing time forgetting ordinary days. We are famous for the meal in which you can taste the freshness of the blessings of nature. We also offer wellness plan workshops to experience nature, culture, food unique to Mt. Mitake, yoga, and stargazing.



Specialty

We value handmade food for our local cuisine. Crispy-grilled river trout with our original miso is one of our specialties. The favored menu option is the Konnyaku sashimi, homemade from the konnyaku potato, which takes many hours to prepare. Enjoy our exquisite menu, made with care.



The lodge where
your mind can rest

Basic information

- 95, Mitakesan, Ome, Tokyo
- 0428-78-8443
- 8 Japanese-style rooms (13m², 15m², 17m², 22m²)
- Irregular holidays
- 3:00 PM 10:00 AM
- 11,000 yen per person
Breakfast & dinner included



Facility details

- Available OK
- Two guests-only bathrooms for men and women
- Kaiseki cuisine 1,500 yen~
- Amenities: Bath, Face, Shampoo, Rinse, Body soap, Toothbrush, Towel, Hair dryer
-

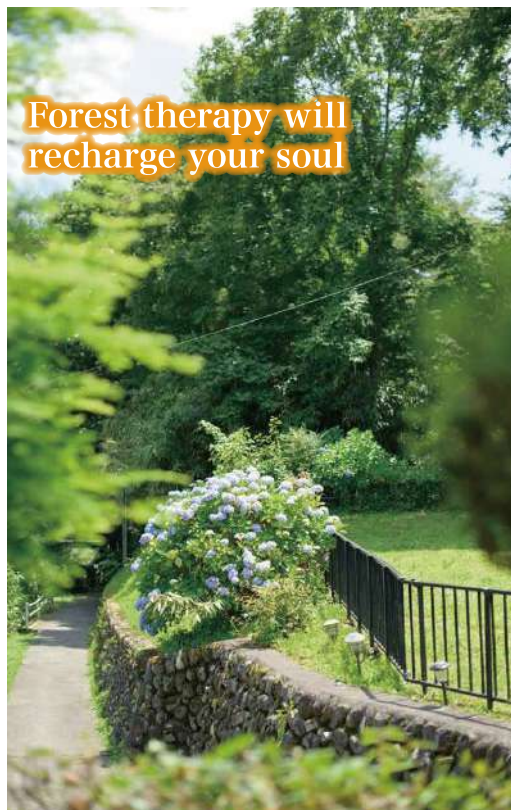


12 Ikoi Sansou

Our Shukubo has been run since the Edo period. From 1965, our Shukubo began welcoming sightseeing visitors as well, and our homely hospitality at our little lodge on top of the mountain has been favored by many visitors. Our bath is made from natural stone, and the view from the bath is spectacular.

Please visit Mt. Mitake, filled with beneficial negative ions, to recharge yourself. In the back of the main hall, we have an indoor shrine temple, but it's private, so please inquire prior.

Forest therapy will recharge your soul



Specialty

We welcome you with gentle meals that include seasonal ingredients. Our plum wine appetizer is very popular. We serve our famous homemade Konnyaku sashimi at breakfast, made with 100% konnyaku potato. Our Konnyaku is also available online and is suitable as a souvenir. (Reservation required)



Basic information

- 75, Mitakesan, Ome, Tokyo
- 0428-78-8566
- 8 rooms
- Irregular holidays
- 3:00 PM 10:00 AM
- 11,000 yen per person
Breakfast & dinner included

Facility details

- No smoking OK
- Two jacuzzi baths: hourly rental
Public day-time bath available
Reservations required (weekday only)
- 2,200 yen ~ Grilled sweet-fish set (weekday only)
- Amenities: Bath Face Shampoo Rinse Body soap



13 Mitake Sansou

The main house was used as a shrine office in the Edo period, and we have welcomed many guests visiting the shrine. The sound of drums from the Nikkusai ceremony, the voice of prayers from the shrine, the pillars, and the heavy interlocked wooden beams all tell the long history of the building. The room is a Japanese-style room with a calming atmosphere. From the room window, you can enjoy the view of the vast mountains. Please have a relaxing time.



The quiet lodge
nestled in the
top of the mountain

Specialty

The Mitake Kaiseki cuisine values homemade food. It is a cuisine of the bounty of the mountain which brings out the best of the ingredients. The owner forages mountain vegetables, goes fishing, and grows vegetables in the mountain. We specifically select the best ingredients. Please enjoy the blessings of nature, which are brought by Mitake's clear water and air.



Basic information

- 123, Mitakesan, Ome, Tokyo
- 0428-78-8474
- 11 rooms (13m², 17m²)
- Irregular holidays
- 3:00 PM 10:00 AM
- 11,000 yen per person
Breakfast & dinner included



Facility details

- No Smoking Wi-Fi OK
- Two guests-only baths for men and women
- Lunch 3,300 yen~
- Amenities: Bath, Face, Shampoo, Rinse, Toothbrush, Hairdryer, Towel, Body soap



14 Komadori Sansou

Our shukubo is located close to the shrine. It has been run since 1776 by Oshi priests who have tended to visitors of the "Ko" mountain religion since ancient times. The lodge has hosted many historical figures over the generations, such as a famous renowned painter in the Meiji era, Gyokudo Kawai, woodblock print artist Shiko Munakata, and bird watcher Godo Nakanishi.



The lodge where
the song of birds
heals you



Specialty

We are located near the top of the mountain, so we have many rooms with spectacular views. Our bathtubs are custom-made wooden barrel baths. Please take your time and be healed from daily stresses.



Basic information

- 155, Mitakesan, Ome, Tokyo
- 0428-78-8472
- 10 rooms
- Irregular holidays
- 3:00 PM 10:00 AM
- 11,000 yen per perso
Breakfast & dinner included

Facility details

- No smoking
Outside smoking space available
- Wi-Fi OK
- Guest-only
cypress barrel baths, laundry room, and shower room
- No
- Amenities**
 - Bath
 - Face
 - Shampoo
 - Body soap
 - Toothbrush
 - Towel



15 Nanzan-sou

Our little lodge, located in Kanto's sacred Mt. Mitake, has a history of more than 200 years. The view from the room is especially spectacular. You can see the sunrise right in front of you, and after sundown, you can enjoy the nightscape of the whole Kanto plain. Our motto is "harmony of wood, sincerity, and taste."

Our private bath with a view from above the clouds is very popular. We welcome you with homely hospitality at our lodge where you can feel the warmth of natural wood.



Specialty

We make uniquely created Japanese cuisine in every season. The Konnyaku sashimi made from Konnyaku potato harvested in Mt. Mitake and with water from the waterfall is popular. Our facility has Wi-Fi and is available for workation. The number of accepted reservations is limited, so please inquire.



Basic information

- 111, Mitakesan, Ome, Tokyo
- 0428-78-8449
- 2 Western-style rooms, 5 Japanese-style rooms, 2 mixed style rooms
- Thursdays**
and sometimes irregular holidays
- 3:00 PM 10:00 AM
- 12,000 yen per person
Breakfast & dinner included
*Seasonal rate may be applied.
Please inquire.



Facility details

- No Smoking**
Designated smoking area available **OK**
- Guest-only bath:**
hourly reservation
- Take out lunch (500 yen-)
Various lunch options available from
(1,000 yen-, or 3,000 yen) **Reservations required**
- Amenities**
Bath Face Shampoo Rinse
Toothbrush Hairdryer Body soap



16 Sanraku-sou

The lodge was loved by the great literary figure Eiji Yoshikawa, the renowned master painter Gyokudo Kawai, as well as other poets and artists. We serve locally produced ingredients for our Kaiseki cuisine, and you can enjoy the unique taste of the area.

We use water from the headwater stream of Mt. Mitake for our bath, and for our medicinal bath, we use blended natural medicinal herbs. It helps you to recover from exhaustion and has a positive effect on your skin. Please recharge yourself in the lodge surrounded by woods. You can stay in a room built with sacred trees, which has a history with Eiji Yoshikawa and Gyokudo Kawai.



Your unique story
in the lodge where
deities are worshipped

Specialty

At the Shukubo that has been run since the Edo period, enjoy celebrative Kaiseki cuisine, the "meal of deities," and promote your health by our specially blended medicinal bath.

Enjoy the works and art of many poets and artists, and let your senses indulge. There is also a wildflower garden where many flowers bloom.



Basic information

- 108, Mitakesan, Ome, Tokyo
- 0428-78-8439
- 10 rooms
- Irregular holidays
- 2:00 PM 10:00 AM
- 11,000 yen per person
Breakfast & dinner included

Facility details

- No Smoking Wi-Fi OK
- 2 Bathrooms for men and women
Public day-time bath: Available Reservations required
- Lunch Kaiseki-bon 2,500 yen~
Kaiseki-zen 3,800 yen~ Reservations required
- Amenities: Bath Face Shampoo Body soap Toiletries Towel Hair dryer
-



17 Machikubota

Located near the top of Mt. Mitake, the view is spectacular, and the nightscape from the room is excellent. We accept only two groups per day. From the 29m² room, you can see the sunrise in the summer and Mt. Tsukuba and Saitama area. From the 13m² room, you can see the Tokyo area, Kanagawa, Yokohama, and Enoshima, and the sunrise in the winter looks beautiful with the simmering ocean of Tokyo Bay.

We serve Oshi cuisine, which uses seasonal ingredients. The owner himself cooks, and our customers are always satisfied.



The lodge with a glorious view from sunrise to night view

Specialty

The view is spectacular from any room. The jacuzzi bath that the owner designed is especially comfortable. From the window of the bathroom, you can see the well-maintained garden. A private bath can be reserved depending on availability and time.



Basic information

- 156, Mitakesan, Ome, Tokyo
- 0428-78-9039
- 2 rooms
(29m²+10m², 13m²+10m²)
- Irregular holidays
- 3:00 PM 10:00 AM
- 8,500 yen per person
Breakfast & dinner included
8,000 yen per person for more than two guests

Facility details

- No smoking Wi-Fi OK
- Jacuzzi bath for men and women with views
Public day-time bath: 500 yen for lunch customers and guests
- Lunch Reservations required
- Amenities: Bath Face Shampoo Body soap Toothbrush Towel Hair dryer
-



18 Nishisuzakibo Kuraya

Our little lodge is closest to Musashi Mitake shrine at the top of the mountain. Please enjoy the spectacular view from a higher elevation. There is a cafe in an old Japanese-style house named "Tearoom Kuraya," it's a great spot to stop by on your hike or visits. We cook and serve seasonal meals with fresh ingredients, and we hope to create a lodge where you can recharge yourself through nature and the view of the mountain.

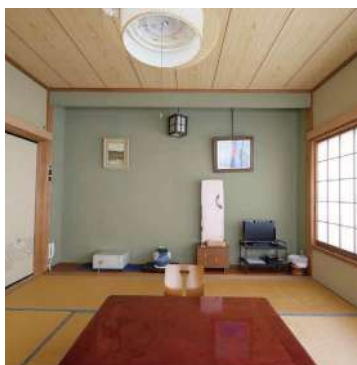


The lodge with a preserved good olden atmosphere and a spectacular view



Specialty

The Proprietress's homemade Oyaki, a bun with sweet bean paste filling, is very popular. With the rich taste of Azuki beans and a crispy outer layer, it is called "Mitake's Specialty." The azuki bean paste is made from beans selected from Hokkaido, and it has a natural sweetness. The thin outer layer is also homemade, and it is our specialty.



Basic information

- 142, Mitakesan, Ome, Tokyo
- 0428-78-8473
- 6 rooms (13m², 22m²)
- Irregular holidays
- 3:00 PM 10:00 AM
- 11,000 yen per person
Breakfast & dinner included
*Two guests minimum



Facility details

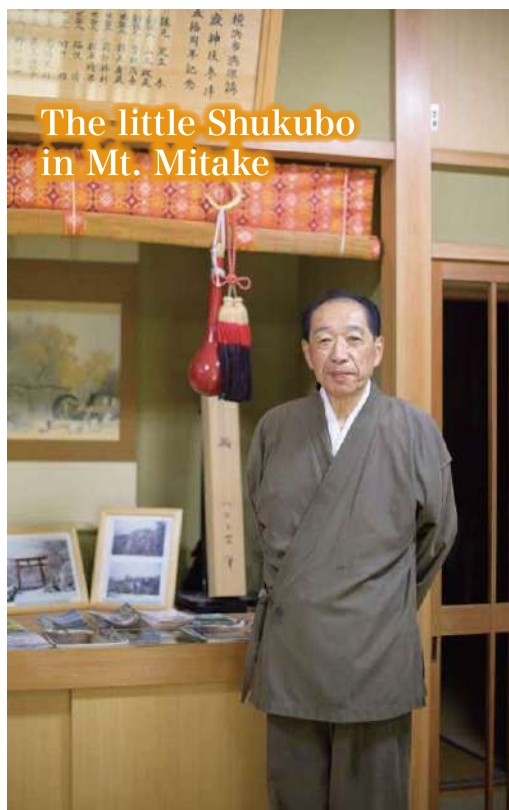
- Only in rooms and at the entrance OK
- Large and small bath for men and women Alternated by hours
Public day-time bath: 500 yen for non-guests
- Soba lunch 880 yen,
Kama-meshi lunch 1,980 yen
- Bath Face Shampoo Body soap
Toothbrush Soap



19 Machiya

Our Shukubo is located in front of the Musashi Mitake shrine's gate, and it is excellent for visiting the shrine. We value a homely and simple atmosphere and style. Please enjoy the nice breeze from the mountain, the refreshing scent of flowers and plants, and the song of birds or cicadas, depending on the season.

Away from everyday life, we hope you can heal your mind and body at Machiya. We welcome you with smiles and hospitality to where you may want to come back again and again.



The little Shukubo in Mt. Mitake

Specialty

Depending on the season, we serve gentle food for the body, such as Japanese Sansho pepper, mushrooms, and river trout. Please enjoy your meal with your group at a large hall where many paintings and ornaments are displayed.



Basic information

- 134, Mitakesan, Ome, Tokyo
- 0428-78-8426
- 7 Japanese-style rooms
- Irregular holidays
- 3:00 PM 10:00 AM
- 9,900 yen per person
Breakfast & dinner included
5,500 yen without meals
*Two guests minimum



Facility details

- No Smoking Wi-Fi OK
- Two guests-only baths for men and women
- Lunch 3,300 yen~ Reservations required
- Amenities: Bath, Face, Shampoo, Body soap, Toothbrush, Razor, Towel, Hair dryer



20 Sanko-sou

We welcome you with unchanging hospitality from olden times to our Japanese folk-art style rooms and building with over 100 years of history. We display and sell Japanese folk-art (Mingei) and antique works. It was also the house of the mother of Jiro Asada, the Naoki Award-winning writer. He still stays sometimes and creates many novels from this lodge. We value the unique space, homely atmosphere, and hospitality. We hope to create a relaxing and gentle healing space for you.



The place where humans and nature can communicate



Specialty

You can enjoy the healing radium spring in the ancient Cypress and Marble baths. The entrance has heavy interlocked wooden beams and a beautiful door. In the building, the decoration theme is "Taisho Roman" style. The beams, pillars, and furnishings still hold the atmosphere and style from the Taisho era. The modern interior fusing with new style has a good reputation.



Basic information

- 137, Mitakesan, Ome, Tokyo
- 0428-78-8476
- 12 rooms
- Irregular holidays
- 3:00 PM 10:00 AM
- 12,650 yen per person
Breakfast & dinner included



Facility details

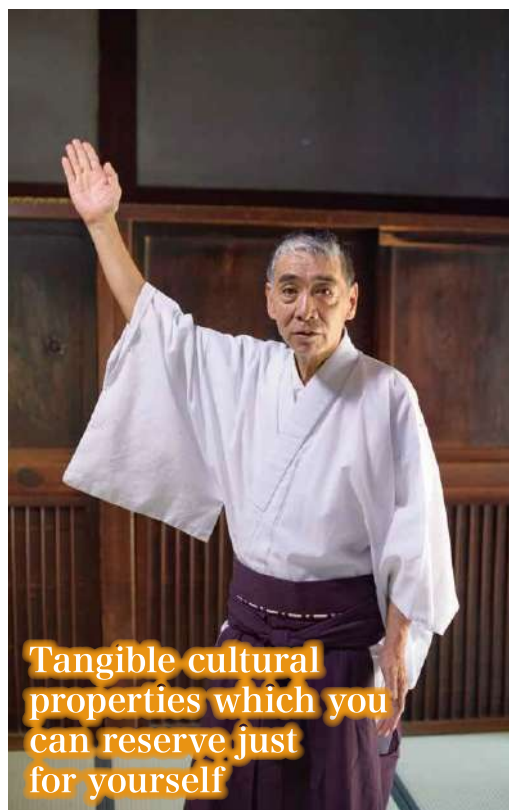
- Only in rooms OK
- Ancient cypress bath and Marble bath for men and women
Public day-time bath: available (11:30 am - 4:00 pm)
- 11:30 am - 2:30 pm
1,650 yen~
- Bath Face Shampoo Body soap
Toothbrush Razor Hairdryer



21 Higashibaba

Our shukubo and tea house are run by a Descendant priest of one of the top retainers of legendary Takeda, Baba Nobuharu Mino-no-Kami. With its trademark thatched roof, the lodge was built at the end of the Edo period (1886) and is designated as a tangible cultural asset of Tokyo, the "Oshi house of Baba Family." Our owner and proprietress, who cooks Oshi cuisine, welcome you warmly.

The lunch is "Oshi-meshi," which our proprietress cooks from the heart. Please relax in our space where you can feel the history, nature, and warm hospitality.



Tangible cultural properties which you can reserve just for yourself



Specialty

Our Shukubo can only be reserved for one group at a time. The Higashibaba has the style of an Oshi priest's house in the late Edo period.

Please enjoy the special time as if you had a timewarp. We offer homemade sweets and matcha tea or coffee sets or light snacks in our tea house.



Basic information

- 54, Mitakesan, Ome, Tokyo
- 0428-78-8446
- 5 Japanese-style rooms (more than 84㎡)
- Irregular holidays
- 3:00 PM 10:00 AM
- Please check our website for the price

Facility details

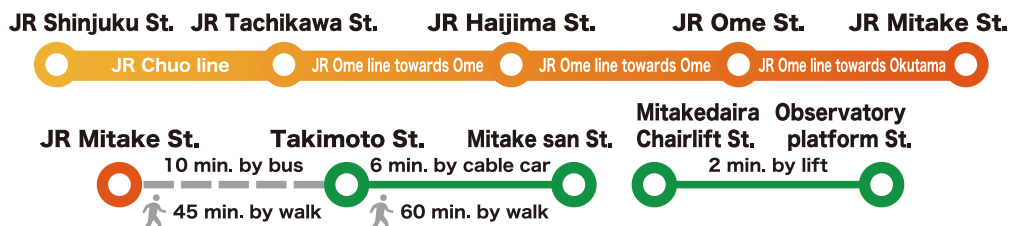
- No Smoking Wi-Fi OK
- Guests-only bath
- Oshi lunch 2,200 yen



Access

For visitors by Train

Take a train on the JR Ome line, get off at JR Mitake st. and take a bus and the cable car to Mt. Mitake. You can use an IC card, Suica, and Pasmo on any transportation.



*Depending on the weather, the chairlift may not be available.

*There will be more cable cars and buses in the high season.

*For details, please check train, bus, and cable car timetables on their websites.

For visitors by car

From Chuo Expressway or Ken-O Expressway to Takimoto St. on Mitake Tozan Railway

From Chuo Expressway

60 min. from Hachioji Interchange to National Route 411 via Tokyo municipal road

From Ken-O Expressway

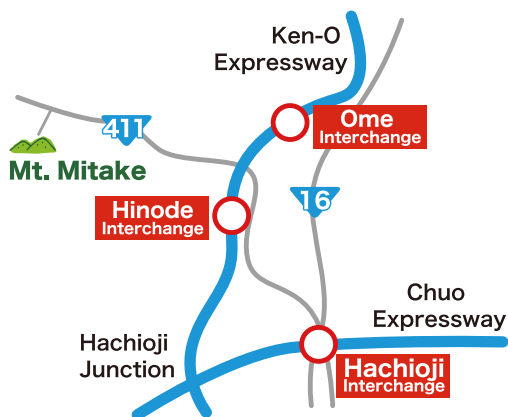
40 min. from Ome Interchange to National Route 411 via Tokyo municipal road

30 min. from Hinode Interchange to National Route 411 via Tokyo municipal road

*Beyond Takimoto St., you can not enter by car.
Please park in the nearest parking lot.

Setting on your car navigation

Please set car navigation to "Takimoto St. on Mitake Tozan Railway"(TEL:0428-78-8121.) If you set it as "Mt. Mitake," it could lead you to a closed road.



Parking Lot

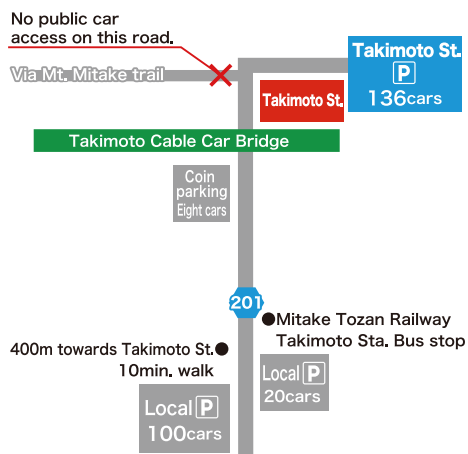
Information of Takimoto St. Parking Lot

Business Hours: 7:10 AM-7:00 PM Parking capacity: 136 units

Regular Parking Fee of Takimoto St. parking

Parking fee		
Car type	Parking Fee	Maximum price per day
Small/ Regular car	350 yen per hour	Up to 1,500 yen per day
Two-wheel vehicles	Motorbike: 500 yen/ day Bicycle: 200 yen/ once	Same price per day
Bus	2,600 yen per day	Same price per day
Small/ Regular car (Overnight)	850 yen to 2,000 yen per stay <small>*Certification by the lodge is required.</small>	Price may differ depending on your departure time. <small>*Overnight guests' prices will be applied. Please ask the lodge staff for details.</small>

Map of Takimoto St. Parking lot



Date of issue: March 2022

Planing & Publishing Ome City Tourist Association

Cooperation Mitakesan Tourist Association

Photographs Photo Studio Ome

Translation Aki Norton

Design and Editing Happ Inc.

Print and Bookmaking Happ Inc.

*The information of Syukubo and other information are valid on Oct. 1st in 2021.

*Due to emergency declaration and other procedures, the business hours and time may change.

*Price or other information may be changed. Please ask the facilities for the latest information.



**Published by Ome City Hall
Commercial Tourism Division**

1-11-1 Higashi Ome, Ome city, Tokyo
TEL 0428-22-1111 (Extension 2343・2344)