

Guide Book

FREE

Setagaya

Experience Community Life in Tokyo



Maneki-neko (Gotoku-ji Temple)

Welcome to Setagaya

Setagaya is conveniently close to Shinjuku and Shibuya, and its bustling *shotengai* (shopping areas) are very popular. Homes alternate with quiet shrines and temples, and there are spots of cultural, artistic, and historical interest, giving the area a unique charm. Take a relaxing walk and find your favorite places nearby.

CONTENTS

- 02 Welcome to Setagaya
- 04 Visit National Treasures and Famous Spots
- 06 Take a Ride on the Setagaya Line!
- 08 Fun Walking in Shimo-kitazawa Shopping Area
- 10 Experiencing Japanese Culture
- 12 Popular Japanese Dishes and Sweets
- 14 Scenery of Four Seasons



Setagaya Tourist Information Site
[Enjoy! SETAGAYA]

<https://www.kanko-setagaya.jp/en/>

You can learn how attractive Setagaya is.

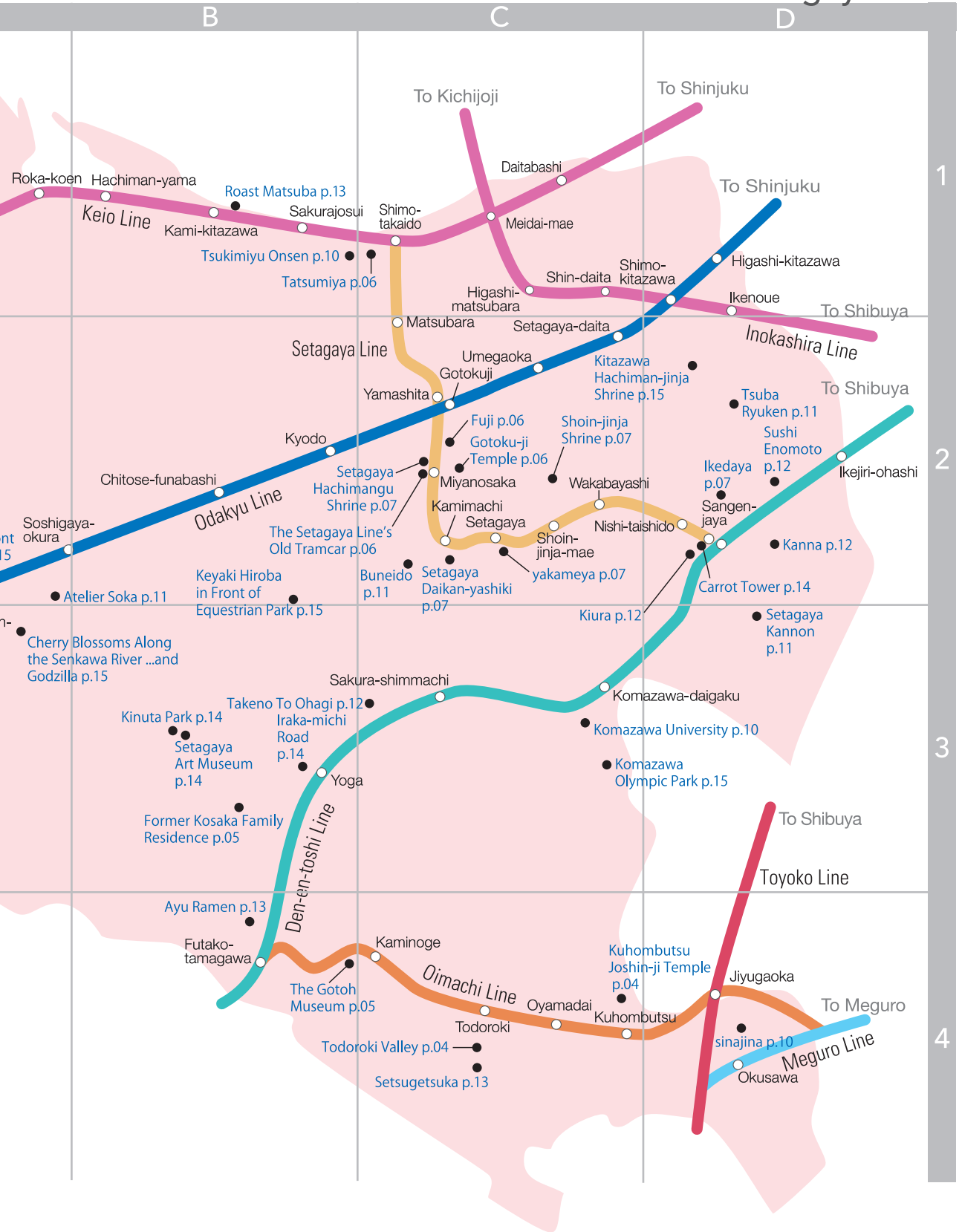


SETAGAYA Free Wi-Fi

Available around locations with this sticker.

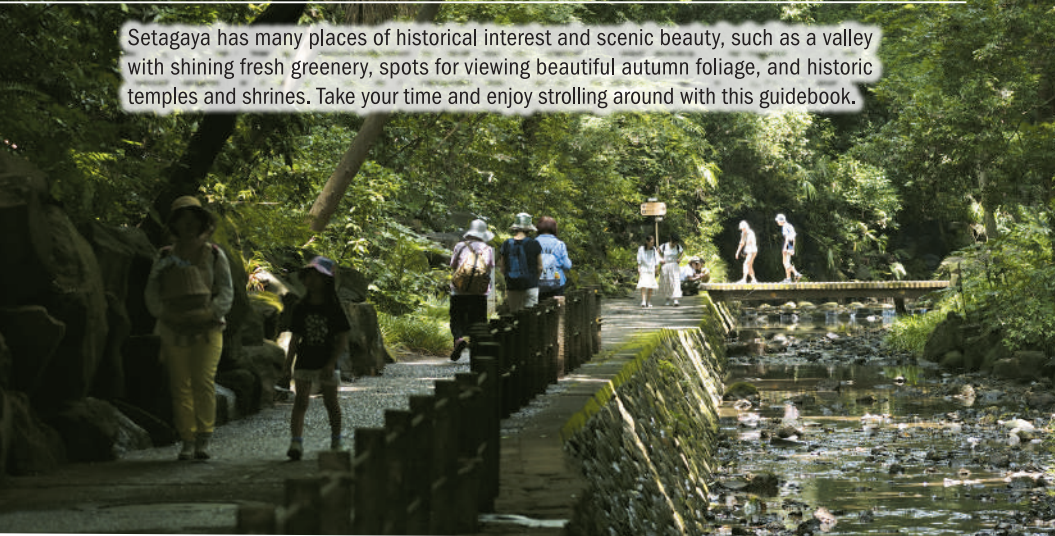


Setagaya MAP



Visit National Treasures and Famous Spots

Setagaya has many places of historical interest and scenic beauty, such as a valley with shining fresh greenery, spots for viewing beautiful autumn foliage, and historic temples and shrines. Take your time and enjoy strolling around with this guidebook.



A soothing oasis near the center of Tokyo Todoroki Valley 等々力渓谷

A well-wooded valley stretches about 1 km along the Yazawa River running toward the Tama River. Visitors can relax and feel comforted by the ever-changing appearance of nature in different seasons, such as when adorned with cherry blossoms or fresh green leaves, watching waterfalls flowing down stone walls covered with moss.

🚗 1-22 and 2-37 to 38 Todoroki, Setagaya-ku 🚶 3-min. walk from Todoroki Sta. on the Oimachi Line
🗺️ C-4

Home to nine Buddha statues Kuhombutsu Joshin-ji Temple 九品仏 浄真寺

Founded more than 300 years ago, this temple has three Amida-do halls, each with three Amida Nyorai (Amitabha) statues. There are big ginkgo and Japanese nutmeg trees on the grounds, making the temple a famous spot for viewing autumn foliage.

🚗 7-41-3 Okusawa, Setagaya-ku 🚶 5-min. walk from Kuhombutsu Sta. on the Oimachi Line
🕒 6 a.m.-4:30 p.m. 🗨️ Open 365 days 🆓 Free 🗺️ C-4



Goshuin is a stamp that you can get at temples (shrines) with the handwritten name of the temple (shrine) and its principal image as a token of worship. At most temples (shrines), it costs a few hundred yen but please note that it is not available at some temples (shrines). After your prayer offering, go to Main Hall (Ryugoden) to get a goshuin.

Splendid museum and garden

The Gotoh Museum 五島美術館

This museum's collections include "Genji Monogatari Emaki" (an illustrated scroll of *The Tale of Genji*) and "Murasaki Shikibu Nikki Emaki" (an illustrated scroll inspired by the private diary of Murasaki Shikibu, author of *The Tale of Genji*), both of which are National Treasures. Along with its signature buildings in the Shinden-zukuri style, which was the architectural form for aristocrats' mansion-estates constructed in the Heian period (794–1185), the museum has a beautiful, extensive garden.

🚶 3-9-25 Kaminoge, Setagaya-ku 🚶 5-min. walk from Kaminoge Sta. on the Oimachi Line 🕒 10 a.m.–5 p.m. (Admission until 4:30 p.m.) Note: Please check the website for the exhibition period. 🗓 Monday (or following weekday when Monday falls on a national holiday), during the time of changing exhibitions, summer maintenance periods, New Year holidays, etc.

💰 1,100 yen (general admission; additional fees for special exhibitions)

🌐 <https://www.gotoh-museum.or.jp/en/overview-en/> 🗺 B-4

"Minoru" of Illustrated Handscroll of The Tale of Genji, National Treasure Heian period (12th century), collection of The Gotoh Museum Scheduled to be exhibited for about one week each spring around Golden Week holiday.



Photoby Shigeo Ogawa



Third scene of Illustrated Handscroll of The Diary of Murasaki Shikibu, National Treasure Kamakura period (13th century), collection of The Gotoh Museum Scheduled to be exhibited for about one week each autumn.



Traditional Japanese house preserved on beautiful verdant land

Former Kosaka Family Residence 旧小坂家住宅

Built in 1937, this was the villa of Junzo Kosaka, a former member of the House of Representatives. It is designated as a Tangible Cultural Property of Setagaya City. Located on the edge of the Kokubunji Cliff Line, you can enjoy the harmonious landscape of the historic building and lush nature.

🚶 4-41-21 Seta, Setagaya-ku 🚶 20-min. walk from Futako-tamagawa Sta. on the Den-en-toshi or Oimachi Line 🕒 9:30 a.m.–4:30 p.m. 🗓 Monday (or following weekday when Monday falls on a national holiday), New Year holidays (December 29–January 3) ☎ 03-3709-5471 🗺 B-3



City-designated Tangible Cultural Property from the same period

Former Yamada Family Residence 旧山田家住宅

This elegant Western-style house is located in Seijo Mitsuike Ryokuchi. It maintains much of its original appearance from when it was first built, allowing you to get a feel of the modern lifestyle of the former Seijo Gakuen residential district.

🚶 4-20-25 Seijo, Setagaya-ku 🚶 7-min. walk from Seijogakuen-mae Sta. on the Odakyu Line 🕒 9:30 a.m.–4:30 p.m. 🗓 Monday (or following weekday when Monday falls on a national holiday), New Year holidays (December 29–January 3) ☎ 03-3789-6111 🗺 A-2



Myoju-ji Temple



Peaceful places surrounded by nature

Karasuyama Temple Town 烏山寺町

This temple town is also called "Little Kyoto in Setagaya," with 26 temples in a tranquil setting. The temples are worth a visit, including Myoju-ji Temple with a beautiful garden and lots of trees.

🚶 2 Kita-karasuyama and 4 to 6 Kita-karasuyama, Setagaya-ku 🚶 15-20 min. walk from Chitose-karasuyama Sta. on the Keio Line 🆓 Free 🗺 A-1

Take a Ride on the Setagaya Line!



Provided by TOKYU RAILWAYS Co., Ltd.

The Setagaya Line is a streetcar line running at a leisurely speed for about 5 km between Sangen-jaya Station and Shimo-takaido Station; it passes through 10 stations over 17 to 18 minutes. Along the line, there are many interesting spots to visit, including famous historic sites such as Gotoku-ji Temple and Shoin-jinja Shrine, and delicious patisseries, providing fun places to stroll around while eating.



Popular with foreign tourists, too, with its *maneki-neko* legend

Gotoku-ji Temple 豪徳寺

In Japan, *maneki-neko* (beckoning cat) figurines are known as an auspicious item beckoning luck. Gotoku-ji Temple is said to be the place where *maneki-neko* originated and is thus a popular photo spot. Numerous *maneki-neko* figurines are offered to the temple by people in return for answered prayers. A cat holding up its right paw shows the pose of inviting good luck.

📍 2-24-7 Gotokuji, Setagaya-ku 🚶 5-min. walk from Miyanosaka Sta. on the Setagaya Line 🕒 Late March to mid-September: 6 a.m.–6 p.m. (Information desk open 8 a.m.–5 p.m.); Late September to mid-March: 6 a.m.–5 p.m. (Information desk open 8 a.m.–4:30 p.m.)

📞 Open 365 days 🆓 Free 📞 03-3426-1437 🗺️ C-2



Shimo-takaido

Matsubara

Yamashita

Miyanosaka

Kamimachi

See trains from bygone eras The Setagaya Line's Old Tramcar

世田谷線旧車両

The Setagaya Line is one of a few existing streetcar lines in Tokyo. The old tramcar, which once ran through the town, is now sitting next to the platform at Miyanosaka Station. The carriage is always open to the public, providing a place to rest and relax.

📍 1-24-6 Miyasaka, Setagaya-ku 🚶 Immediate outside Miyanosaka Sta. on the Setagaya Line 🕒 9 a.m.–5 p.m. 🗺️ C-2



©SETAGAYA



People lining up for taiyaki pastry Tatumiya たつみや

One of the most popular *taiyaki* stores in Setagaya. *Taiyaki* is a fish-shaped pancake with a crispy exterior and a filling of delicious red bean paste.

📍 5-31-1 Akatsutsumi, Setagaya-ku 🚶 3-min. walk from Shimo-takaido Sta. on the Setagaya or Keio Line 🕒 10 a.m.–6:30 p.m. 📞 Tuesday, and summer holiday from July to early September 📞 03-3324-9175 🗺️ C-1



Try delicious sweet potatoes

Fuji 焼き芋専門店 ふじ

A rare store specializing in many varieties of *yakiimo* (baked sweet potato). Try various kinds and see which you like. *The number of varieties is less during spring and summer.

📍 1-7-11 Gotokuji, Setagaya-ku 🚶 4-min. walk from Yamashita Sta. on the Setagaya Line or Gotokuji Sta. on the Odakyu Line 🕒 10 a.m.–6 p.m.

📞 Thursday 🌐 <https://f-yakiimo.com/> 🗺️ C-2



Delicious handmade Satsuma-age

Yakameya や亀や

Satsuma-age is a Japanese-style deep-fried fish ball made from *surimi* (fish paste) with cheese, meat, or vegetables. All products are handmade and available from 38 yen per piece. "Yakameya" does not use eggs or wheat flours to stick the ingredients together, so it is safe for those with related allergies.



- 📍 1-14-16 Setagaya, Setagaya-ku
- 🚶 2-min. walk from Setagaya Sta. on the Setagaya Line
- 🕒 Noon-7 p.m.
- 🗓 Sunday, 1st, 3rd and 5th Monday, Monday that falls on a national holiday ☎03-6319-8988
- 🌐 <https://www.rakuten.co.jp/yakameya/> 🗺 C-2

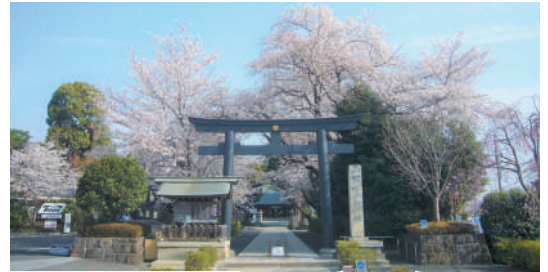


Home of the god of learning

Shoin-jinja Shrine 松陰神社

Shoin-jinja Shrine is dedicated to the worship of Yoshida Shoin, a great thinker in 19th-century Japan. Shoin was also an educator who taught many politicians and is referred to as "the god of learning." Charms embroidered with letters written in his own hand are popular souvenirs (1,000 yen).

- 📍 4-35-1 Wakabayashi, Setagaya-ku 🚶 3-min. walk from Shoin-jinja-mae Sta. on the Setagaya Line 🕒 7 a.m.-5 p.m. 🗓 The office closes irregularly.
- 🆓 Free ☎03-3421-4834 🌐 <https://www.shoinjinja.org> 🗺 C-2



Setagaya

Shoin-jinja-mae

Wakabayashi

Nishi-taishido

Sangen-jaya

A spot to experience history Setagaya Daikan-yashiki (magistrate's residence)

世田谷代官屋敷

This private residence of the Oba Family, which was rebuilt in the 18th century, is known as "Oba Daikan-yashiki" (*daikan* means "magistrate," one of the posts of the military government). It is located on the same street where Boro-ichi Market takes place every year January 15-16 and December 15-16. The market features antiques, miscellaneous goods, and food.



- 📍 1-29-18 Setagaya, Setagaya-ku
- 🚶 5-min. walk from Kamimachi Sta. or Setagaya Sta. on the Setagaya Line 🗺 C-2

Experience the atmosphere of sumo

Setagaya Hachimangu Shrine 世田谷八幡宮

Located very close to Miyanosaka Station, Setagaya Hachimangu Shrine is the head shrine of Setagaya area's *chinju-sha* (tutelary shrines). It has been active in staging *hono-zumo* (ceremonial sumo tournaments) since the Edo period, hosting one of the three major sumo competitions held at shrines in Tokyo. Its annual *hono-zumo* tournament is still held in autumn.

- 📍 1-26-3 Miyasaka, Setagaya-ku 🚶 1-min. walk from Miyanosaka Sta. on the Setagaya Line 🕒 The shrine is always open for people offering prayers. 🗓 Open 365 days
- 🆓 Free ☎03-3429-1732 🗺 C-2

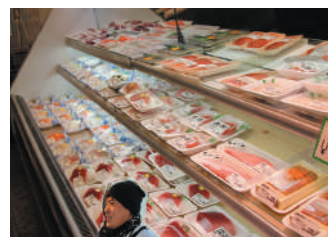


Buy fresh fish

Ikedaya 池田屋

A fish store in the traditional style, with high-spirited shouting of sellers. It holds a tuna-cutting performance at 2:30 p.m. every Sunday, when you can buy delicious tuna. The shop sells not only fresh seasonal fish but also a variety of *bento* (box lunch).

- 📍 2-25-6 Taishido, Setagaya-ku 🚶 5-min. walk from Sangen-jaya Sta. on the Setagaya or Den-en-toshi Line 🕒 10:30 a.m.-7 p.m. 🗓 Wednesday
- ☎03-3421-6536 🌐 <https://osakananomise-ikedaya.co.jp/> 🗺 D-2



1



Make your own seasoned rice porridge
bio ojiyan cafe Shimokitazawa

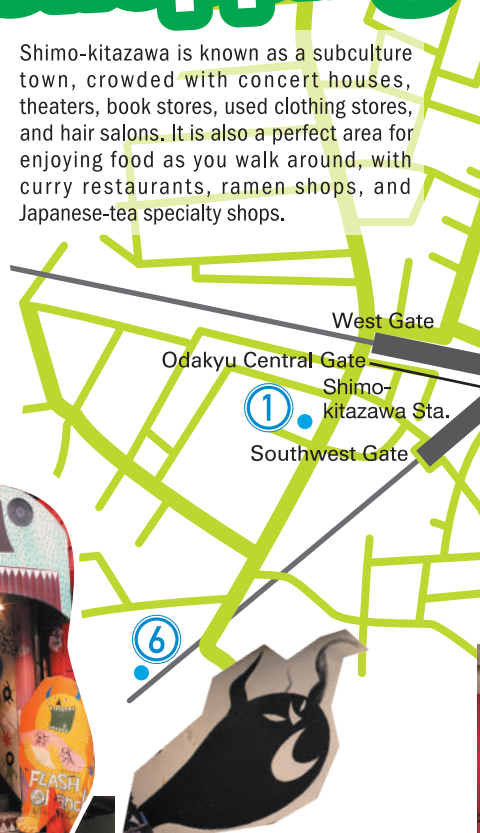
bio ojiyan cafe 下北沢店

This cafe features *ojiya* (rice cooked in soup) with egg, sausage, deep-fried bread, and *nori* (seaweed). You can customize *ojiya* as you like by ordering additional toppings, including *mentaiko* (seasoned pollock roe), *shirasu* (young sardines), and *natto* (fermented soybeans), and fried chicken.

- 📍 5-35-25 Daita, Setagaya-ku
- 🚶 3-min. walk from Shimo-kitazawa Sta. on the Odakyu or Inokashira Line
- 🕒 11 a.m.–8 p.m. (Last order 7 p.m.)
- 🗓️ Wednesday

Fun Walk Shimo-Shopping

Shimo-kitazawa is known as a subculture town, crowded with concert houses, theaters, book stores, used clothing stores, and hair salons. It is also a perfect area for enjoying food as you walk around, with curry restaurants, ramen shops, and Japanese-tea specialty shops.



2



Delicious matcha sweets to go!
Shimokita Chaen Oyama

しもきた茶苑大山

A Japanese tea specialty shop with two staff members who have earned the top rank for the *chashi* (tea master) certificate and possess full knowledge of Japanese tea. In 2021, it reopened inside “reload” in Shimokita Senrogai (railroad town). Not only do they sell tea leaves, but you can also get a taste of rich matcha lattes and *kakigori* (shaved ice with various toppings).

- 📍 reload1-11, 3-19-20 Kitazawa, Setagaya-ku 🚶 4-min. walk from Shimo-kitazawa Sta. on the Odakyu or Inokashira Line, or Higashi-kitazawa Sta. on the Odakyu Line
- 🕒 Sales: 9 a.m.–7 p.m.; Cafe (only take-out): 2–6 p.m.
- 🗓️ Wednesday (except for special sales on the 27 and 28 of each month) 📞 03-3466-5588 🌐 <https://shimokita-chaen.com/>

3



If you love music, this is the place for you
Flash Disc Ranch

Opened in 1982, this spacious record store sells discs in various genres, including rock, soul, and jazz, as well as post-punk and hip-hop. The shop’s fans include many famous DJs and recording artists.

- 📍 Misuzu Bldg. 2F, 2-12-16 Kitazawa, Setagaya-ku 🚶 3-min. walk from Shimo-kitazawa Sta. on the Odakyu or Inokashira Line 🕒 Noon–8 p.m.
- 🗓️ Wednesday 📞 03-3414-0421 🌐 <https://www.facebook.com/flashdiscranch/>



ing in Kitazawa Area



5

A great gathering of unique secondhand clothes NEW YORK JOE EXCHANGE®

A used clothing store in a renovated old public bath building. It also sells secondhand bags, shoes, and accessories. All items in the store cost less than 10,000 yen, with an average price of 2,000 yen. You're sure to find a great deal!

📍 3-26-4 Kitazawa, Setagaya-ku 🚶 5-min. walk from Shimo-kitazawa Sta. on the Odakyu or Inokashira Line
🕒 Noon-8 p.m. 🗓 Dec.31-Jan.3 🌐 <http://newyorkjoeexchange.com/>

6

A bookstore—with beer! B&B 本屋B&B

This is a bookstore, yet you can order beer and other drinks. It hosts discussion events with authors and editors almost daily.

📍 BONUS TRACK 2F, 2-36-15 Daita, Setagaya-ku 🚶 5-min. walk from Shimo-kitazawa Sta. on the Odakyu or Inokashira Line 🕒 Noon-9 p.m. (Note: May vary from day to day. Daily information is on the website.) 🗓 New Year holidays and special occasions 📞 03-6450-8272 🌐 <https://bookandbeer.com>



4



Enjoy a drink with your food Spice Kitchen MOONA

A curry restaurant where you can also enjoy drinking. It offers set menus of curry for lunch and a variety of small dishes at night. Popular offerings include two kinds of seasonal curry, bean curry, a seafood lunch set with a vegetable dish (1,800 yen, 10 servings per day), and "veg. set" (1,200 yen).

📍 2-12-13 5F Kitazawa, Setagaya-ku 🚶 1-min. walk from Shimo-kitazawa Sta. on the Odakyu or Inokashira Line 🕒 Tuesday through Friday: 11:30 a.m.-3:00 p.m. and 6-10 p.m. (Last order 9 p.m.); Saturday, Sunday, and holidays: 11:30 a.m.-3:30 p.m. and 5:30-10 p.m. (Last order 9 p.m.) 🗓 Monday and last Tuesday of each month (Note: Shop may close if supplies sell out.) 🌐 <https://www.moona.jp/>



7

Nightspot also popular with locals Suzunari Yokocho Street

鈴なり横丁

Suzunari Yokocho is located on the first floor of Shimo-kitazawa The Suzunari, a small theater that gave Shimo-kitazawa the name "town of theater." It has more than 10 snack bars, cafes, bars, and other places selling alcoholic beverages. Visit here and enjoy the hidden charm of Shimo-kitazawa.

📍 1-45-15 Kitazawa, Setagaya-ku 🚶 5-min. walk from Shimo-kitazawa Sta. on the Odakyu or Inokashira Line 🕒 Business hours and holidays depend on individual stores.



Experiencing Japanese Culture

Get ready to experience Japanese culture, including *zazen*, *ikebana*, *sento*, and *asaichi*.



Try the basics of Zen practice

Zazen (Komazawa University) 坐禅 (駒澤大学)

Komazawa University offers Sunday lectures (500 yen per session) related to Buddhism and Zen. The program consists of two parts: a practical session of *zazen*, which is one of the basic practices of Zen, and a lecture about interpretation of Buddhist sutras and Buddha statues. You can also join either the *zazen* session or lecture. Zazen sitting meditation introductory class for beginners is held (irregularly). *Those all Zen practices are only in Japanese.

📍 1-23-1 Komazawa, Setagaya-ku 🚶 10-min. walk from Komazawa-daigaku Sta. on the Den-en-toshi Line 🕒 9–10 a.m. (zazen session), 10–11 a.m. (lecture) 🗓 Monday through Saturday (held only on Sunday). Note: Please check the schedule on the website. If you are joining for the first time, please arrive at the venue by 8:30 a.m. (for an explanation of zazen etiquette). 🌐 <https://www.komazawa-u.ac.jp/social/lifelearning/sunday/> 🗿 C-3

Appreciate nature in a pot

Bonsai Classes (sinajina) 盆栽教室 (品)

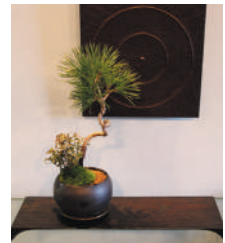
Bonsai is a hobby in which miniature trees or plants are cultivated in a pot or container for aesthetic appreciation. A specialty *bonsai* store offers classes where you can learn about the fundamentals of the craft, creating a complete landscape from seasonal seedlings. After completing your bonsai, you can take it home. The beginners' basic course is 7,150 yen (including cost of materials) per session (English available).

📍 2-35-13 Okusawa, Setagaya-ku 🚶 5-min. walk from Okusawa Sta. on the Meguro Line, 6-min. walk from Jiyugaoka Sta. on the Toyoko or Oimachi Line 🕒 11 a.m.–6 p.m.

🗓 Wednesday and 1st Saturday of each month
Note: Please check the schedule on the website.

☎ 03-3725-0303

🌐 <https://www.sinajina.com/> 🗿 D-4



Let's Go to Sento!

In addition to bathing, *sento* (public bath facilities) have long been places for social interaction among people in Japan. In Setagaya, there are more than 20 *sento* facilities. Immerse yourself in a big bath and you will be able to release the tension from your body and truly relax.

Rules and Etiquette at Sento

A *sento* is a place where many people gather. For everyone to be able to enjoy a comfortable space, there are some rules. The following are the main ones. Please keep them in mind and enjoy *sento* together with others.

- Wash yourself before getting into the bathtub.
- Be careful not to splash other people with water from your shower.
- Do not put towels in the bathtub.
- Do not spit.

Note: For details, please visit:

<https://www.setagaya1010.tokyo/rule/>

Tsukimiyu Onsen

月見湯温泉

This *sento* has baths filled with natural hot-spring water, which is said to warm up your body effectively and make your skin smooth. The cold-water bath, which is popular among sauna fans, also uses natural hot-spring water.

📍 5-36-16 Akatsutsumi, Setagaya-ku 🚶 6-min. walk from Shimo-takaido Sta. on the Setagaya or Keio Line

🕒 3:30–11 p.m. 🗓 Tuesday, 2nd and 4th Monday

💰 500 yen (adults), 200 yen (elementary school students), 100 yen (preschoolers) ☎ 03-3321-6738 (Please contact in the afternoon) 🗿 B-1

The natural hot-spring water is heated, filtered and circulated.





An art in which flowers and plants are arranged in a vase or other receptacle

Ikebana Classes (Atelier Soka) 生け花教室 (アトリエ双香)

Ikebana is the art of arranging flowers and other materials and appreciating the beauty they create. Atelier Soka offers *ikebana* classes in English. Trial lesson: 11,000 yen (including cost of flowers and materials)

Note: Please check the website for the schedule before inquiring. <https://www.atelier-soka.com/english/> A-2
Instagram: https://www.instagram.com/mikaotani_flowers/



Shop on the grounds of a temple

Asaichi (Setagaya Kannon) 朝市 (世田谷観音)

Setagaya-san Kannon-ji Temple, commonly called Setagaya Kannon, holds an *asaichi* (morning market) on the second Saturday of every month. You can buy fresh vegetables from Chiba and Ibaraki prefectures as well as *tsukemono* (Japanese pickles).

4-9-4 Shimouma, Setagaya-ku 15-min. walk from Sangen-jaya Sta. on the Setagaya or Den-en-toshi Line Asaichi market 6-7:30 a.m. Held only on the second Saturday of every month (the temple is open for prayers every day 6 a.m.-5 p.m.) Note: Please check the website for information on the *asaichi*.
 Free for temple entrance 03-3410-8811 <http://www.setagayakannon.com/> D-3

See and Buy Traditional Craft Culture You can watch the production of traditional Japanese crafts, such as the polishing of swords and the making of sword guards, and also buy the products.



Tsuba Ryuken 現代鐺工 隆剣

This production studio also serves as a gallery. *Tsuba* is the iron guard at the end of the grip of a *katana* (Japanese sword) to protect the user's hands. Prices range from 18,000 yen to 28,000 yen. The studio is open only for people who are planning to purchase *tsuba* (free admission, reservation required by the day before the visit). Tsuba Ryuken participates in the Boro-ichi Market every year.

2-23-1 Mishuku, Setagaya-ku 11-min. walk from Ikenoue Sta. on the Inokashira Line
 Need to confirm by phone. 090-3535-6351 (in Japanese only) <http://tsubaryuken.com/>
 D-2

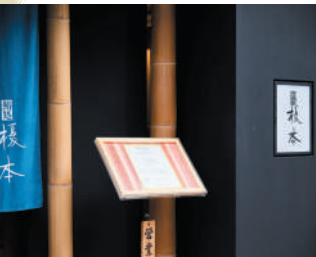


Japanese Sword Polishing Buneido

美術刀剣研処 世田谷文永洞

The *togishi* (sword polisher) has a dual mission: to give a sword its sharpness as a bladed weapon and to enhance its beauty as an object of art. The fee for polishing depends on the sword's condition, but usually ranges from 5,000 yen to 12,000 yen per 3.3 cm. Tours are also offered (free admission, phone reservation required).

5-16-17 Tsurumaki, Setagaya-ku 8-min. walk from Kamimachi Sta. on the Setagaya Line
 Tuesday through Friday: 1-6 p.m.; Saturday: 11 a.m.-6 p.m. Sunday and Monday 03-3439-5061 <https://setagayabuneido.com/> C-2



All-natural products

Sushi Enomoto 鮨処 榎本

This restaurant with traditionally trained sushi chefs serves only sushi made with natural seafood, including the highest-rank sea urchin and bluefin tuna. At the counter, you can watch the chef's techniques right in front of you. A sushi set for one person costs 3,900 yen (Lunch Hour).



📍 3-29-3 Ikejiri, Setagaya-ku
 🚶 10-min. walk from Sangen-jaya Sta. on the Setagaya or Den-en-toshi Line
 🕒 11:30 a.m.–2 p.m. and 5:30–10 p.m.
 📞 Wednesday ☎ 03-3424-9601
 🗺️ D-2



50 types of sake to choose from

Kiura 氣ウラ

Located in a renovated 60-year-old house, this restaurant serves *teppanyaki* (food cooked on an iron grill) along with a selection of more than 50 varieties of sake. The popular meat dishes, such as lightly roasted beef and chicken, pair well with the drinks.



📍 Kiura Bldg. 1F/2F, 2-14-21 Sangen-jaya, Setagaya-ku 🚶 2-min. walk from Sangen-jaya Sta. on the Setagaya or Den-en-toshi Line 🕒 5:30 p.m.–midnight 📞 Open 365 days 🗺️ D-2

Popular Japanese and Sweets

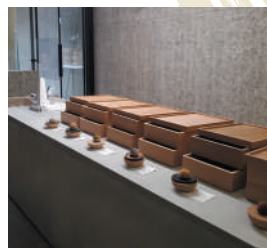
Seasonally flavored shaved ice

Kanna 和kitchen かな

A place where you can enjoy *kakigori* (shaved ice with syrup topping) anytime throughout the year. One of its most popular items, Kori-shiruko (900 yen), has a beautiful appearance and a hint of saltiness in the sweet red bean paste.



📍 Coms Shimouma 2F, 2-43-11 Shimouma, Setagaya-ku 🚶 12-min. walk from Sangen-jaya Sta. on the Setagaya or Den-en-toshi Line 🕒 11 a.m.–7 p.m. 📞 Wednesday ☎ 03-6453-2737 🗺️ D-2



Colorful handmade ohagi sweet rice balls

Takeno To Ohagi タケノとおはぎ

Ohagi is a Japanese sweet consisting of a sticky rice ball that's typically covered with sweet red bean paste. This specialty shop sells a variety of uniquely colorful *ohagi*, decorated with various toppings such as pumpkin and nuts. (The ingredients vary according to the season.) From 180 yen each

📍 Ahni Publishing Bldg. 1F, 3-5-6 Yoga, Setagaya-ku 🚶 8-min. walk from Sakura-shimmachi Sta. on the Den-en-toshi Line 🕒 Noon–6 p.m. (closed when sold out) 📞 Monday and Tuesday 🗺️ C-3



Must-try Japanese sweets and lush greenery Setsugetsuka 雪月花

A cafe at Todoroki Fudosen Temple in Todoroki Valley. Enjoy *kuzumochi* (mochi dessert cake made of *kuzuko* starch with sweet toppings, limited quantities available on Saturdays, Sundays and holidays, 500 yen), *matcha* (500 yen), *anmitsu* (a dessert made with agar jelly, fruit, red bean paste, etc., 500 yen), *ramune* (carbonated soft drink, 200 yen).



📍 1-22-47 Todoroki, Setagaya-ku 🚶 10-min. walk from Todoroki Sta. on the Oimachi Line 🕒 Weekday: 11 a.m.–4 p.m.; Saturday, Sunday, and holidays: 10:30 a.m.–4 p.m. (Opening time may vary depending on the time of year.) 🚫 Closed in case of rain, and on weekdays from late December to mid-March ☎ 03-3705-8137 📄 C-4

Dishes

Setagaya is home to many popular restaurants and cafes, including those serving such typical Japanese food as *wagyu* beef, sushi, and sake, and ones serving sweets like *ohagi* and *kakigori*.

📍 4-11-5 2F Kami-kitazawa, Setagaya-ku 🚶 2-min. walk from Kami-kitazawa Sta. on the Keio Line 🕒 5–10:30 p.m. (Last order 10 p.m.) Note: The store may close early for maintenance or other reasons. 🚫 No fixed holidays (about 4 days per year) ☎ 03-6379-9217 🌐 <https://roastmatsuba.amebaownd.com/> 📄 B-1

Savor melt-in-your-mouth brand-name beef Roast Matsuba

ロース松葉

One of Tokyo's few *yakiniku* restaurants (Japanese barbecue) where you can eat "Inaba Manyo Beef," a rare type of *wagyu* beef from Tottori Prefecture. The restaurant is committed to food safety and uses domestically grown vegetables and in-store-made, preservative-free sauces.



📍 Tamagawa 3-chome Mansion 102, 3-15-12 Tamagawa, Setagaya-ku 🚶 5-min. walk from Futako-Tamagawa Sta. on the Den-en-toshi or Oimachi Line 🕒 11:30 a.m.–2:30 p.m. (or until sold out) and 6 p.m. until sold out 🚫 No fixed holiday 📄 B-4

Ramen noodles with a whole sweetfish Ayu Ramen 鮎ラーメン

Ayu Marugoto Ramen is a truly unique noodle dish that, as its name suggests, comes topped with a whole dried *ayu* (sweetfish); variations are also available with half and quarter *ayu*.



Authentic delicatessen showcasing the flavors of meat Seiniku Yanagiya 精肉柳屋

Established in 1947, this butcher shop offers the highest-ranked Sendai Beef, brand-name pork, etc. Also popular are the authentic deli products made in collaboration with local stores using high-quality meat.

📍 6-34-2 Minami-karasuyama, Setagaya-ku 🚶 4-min. walk from Chitose-karasuyama Sta. on the Keio Line 🕒 Weekday: 10 a.m.–6:30 p.m.; Saturday and holidays: 10 a.m.–6 p.m. 📄 Sunday ☎ 03-3307-2857 🌐 <https://www.facebook.com/seinikuyanagiya> 📄 A-1



Scenery of Four Seasons



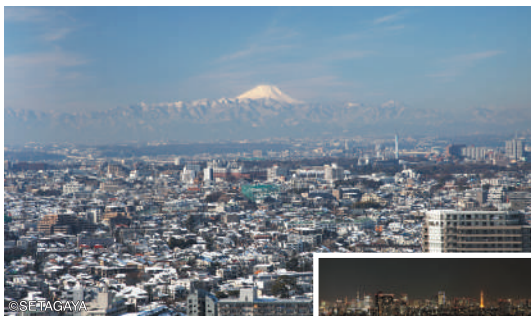
©Tokyo Metropolitan Park Association

Setagaya has many large parks, creating a townscape where beautiful scenery is integrated into everyday life. There are great places for viewing cherry blossoms in spring and colorful leaves in autumn, as well as many spots from which you can see Mount Fuji.

Spread a ground sheet and enjoy a picnic Kinuta Park 砧公園

This is one of the largest parks in Setagaya. There are various areas for fun activities, including "Minna no Hiroba" and "Children's forest" where children can play. It is also a popular destination for viewing cherry blossoms in spring. The blossoms reach their peak from late March to early April. There is also the Setagaya Sogo Undojo All-season Swimming Pool nearby.

🚗 1-1 Kinuta-koen, Setagaya-ku 🕒 20-min. walk from Yoga Sta. on the Den-en-toshi Line
🆓 Free 📞 03-3700-0414 🗺️ B-3



©SETAGAYA



©SETAGAYA

Landmark of Sangen-jaya Carrot Tower キャロットタワー

The observatory on the 26th floor is free to enter. It is a perfect spot to enjoy the lovely view of Mount Fuji on sunny days in winter. You can also enjoy beautiful evening and night views.

🚗 4-1-1 Taishido, Setagaya-ku 🕒 3-min. walk from Sangen-jaya Sta. on the Setagaya or Den-en-toshi Line 🕒 9:30 a.m.—11 p.m. (Restaurant and cafe have different business hours.)
🗓️ 2nd Wednesday of each month, New Year holidays
🆓 Free 📞 03-5430-1185 (in Japanese only) 🗺️ D-2

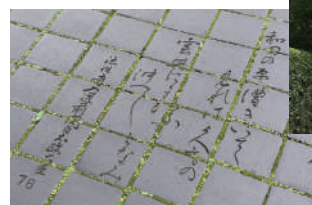


Houses about 16,000 artworks

Setagaya Art Museum 世田谷美術館

Located in a corner of Kinuta Park, where lots of plants and trees create beautiful seasonal changes, this museum houses many artworks, including works by Henri Rousseau. There is a French restaurant, Le Jardin, in the facility.

🚗 1-2 Kinuta-koen, Setagaya-ku 🕒 17-min. walk from Yoga Sta. on the Den-en-toshi Line
🕒 10 a.m.—6 p.m. (Admission until 5:30 p.m.) 🗓️ Monday (or following weekday when Monday falls on a national holiday), New Year holidays 🎫 Admission prices vary depending on the exhibition. 🌐 <https://www.setagayaartmuseum.or.jp/en/> 🗺️ B-3



Stroll along the promenade Iraka-michi Road いらか道

Iraka means "a roof made of kawara (Japanese traditional roof tiles)." Uniquely paved with kawara, this beautiful promenade leads from Yoga Station to Setagaya Art Museum. You can see waka (traditional Japanese poems) engraved here and there on the tiles. There are also some unique monuments.

🚗 4-4 Yoga to 5-5 Kami-yoga, Setagaya-ku 🕒 1-min. walk from Yoga Sta. on the Den-en-toshi Line 🗺️ B-3



A street lined with beautiful ginkgo trees Ginkgo Trees in Front of Seijo Gakuen

成城学園前のいちよう並木

The road stretching about 120 meters from the Seijo Gakuen school is especially gorgeous with colored leaves in autumn. The trees were planted by the school when it moved to the area, and the locals have been preserving the landscape for more than 90 years. The best season to enjoy the autumn leaves is late November to December.

🚶 6 Seijo, Setagaya-ku 🚶 3-min. walk from Seijogakuen-mae Sta. on the Odakyu Line 🗺️ A-2



A park to enjoy sports Komazawa Olympic Park

駒沢オリンピック公園

This park was constructed on the site of the 1964 Tokyo Olympics. The vast grounds contain athletics tracks, baseball fields, tennis courts, and the Tokyo Olympics Memorial Gallery. It also hosts food events such as meat festival and Tokyo Ramen show.

🚶 1-1 Komazawa-koen, Setagaya-ku 🚶 15-min. walk from Komazawa-daigaku Sta. on the Den-en-toshi Line 🆓 Free 03-3421-6431 🗺️ C-3



Time for a leisurely walk Cherry Blossoms Along the Senkawa River ...and Godzilla

仙川の桜とゴジラ

Nice walking paths line the Senkawa River, which flows between Soshigaya-okura Station and Seijogakuen-mae Station. In spring, cherry blossoms on both sides of the river are reflected on the surface of the water, creating a gorgeous view. Toho Studios, where many famous movies have been made, is located by the Senkawa River. You can see a bronze statue of Godzilla there.



🚶 1-4-1 Seijo, Setagaya-ku (Toho Studios)
🚶 10-min. walk from Seijogakuen-mae Sta. on the Odakyu Line 🗺️ A-3



©1954, 2007 TOHO CO., LTD.
TM&©TOHO CO., LTD. ©2007 TOHO CO., LTD.



Mount Fuji can be seen on a clear early morning in winter Kitazawa Hachiman-jinja Shrine 北澤八幡神社

Said to enshrine the guardian deity of Setagaya's northern area, this shrine throngs with people at the Autumn Festival, where 20 portable shrines are paraded around. The gripping scene of the shrines being carried into the grounds is reminiscent of a drawing on a picture scroll.

🚶 3-25-3 Daizawa, Setagaya-ku 🚶 8-min. walk from Ikenoue Sta. on the Inokashira Line, 12-min. walk from Shimo-kitazawa Sta. on the Odakyu or Inokashira Line 🆓 Free 03-3422-1370 🗺️ D-2



A square with splendid keyaki (zelkova) trees Keyaki Hiroba in Front of Equestrian Park 馬事公苑前けやき広場

Equestrian Park was a venue for equestrian events at the 1964 Tokyo Olympics and the Tokyo 2020 Olympic and Paralympic games. This entrance to the park is famous for beautiful autumn leaves.

🚶 2-3/2-4 Kami-yoga, Setagaya-ku 🚶 20-min. walk from Sakura-shimmachi Sta. or Yoga Sta. on the Den-en-toshi Line, or Kyodo Sta. or Chitose-funabashi Sta. on the Odakyu Line, or Kamimachi Sta. on the Setagaya Line
Note: Equestrian Park was the venue for equestrian events (except for cross-country). 🗺️ B-2



Access

From Shinjuku to Shimo-kitazawa

From Shibuya to Shimo-kitazawa

From Shibuya to Sangen-jaya

From Shibuya to Futako-tamagawa

Haneda Airport to Futako-tamagawa

Narita Airport to Futako-tamagawa

10 min. by Odakyu Line

6 min. by Keio Inokashira Line

5 min. by Tokyu Den-en-toshi Line

15 min. by Tokyu Den-en-toshi Line

about 45 min. to 1 hr. 30 min. by Tokyu Transsés/Keihin Kyuko Bus

about 2 to 3 hr. by Limousine Bus



世田谷まちなか観光交流協会 公益財団法人 世田谷区産業振興公社

〒154-0004

東京都世田谷区太子堂 2-16-7 世田谷産業プラザ 4F

<https://www.setagaya-icl.or.jp>

2023年3月発行 (改訂)

* 本冊子に掲載している情報は、2022年11~12月現在のものです。

* 本冊子に掲載している価格は、消費税10%を加算した税込価格です。

飲食料品など、一部8%のものもあります。

* 掲載情報は、予告なく変更される場合があります。予めご了承ください。

Setagaya City Tourism Association Setagaya Public Corporation for Industrial & Tourism Promotion

Setagaya Sangyo Plaza 4F, 2-16-7 Taishido, Setagaya-ku, Tokyo 154-0004

<https://www.kanko-setagaya.jp/en/>

Published in March 2023 (Revised edition)

Note:

*The information herein is current as of Nov. to Dec. 2022.

*The prices herein include 10% consumption tax. Some food and beverage items are 8%.

*The information herein is subject to change without notice.

Enjoy! SETAGAYA

