



January, 2023 The full opening of HANEDA AIRPORT GARDEN

The "Shopping City" directly connected to the international terminal, along with two hotels open in December

Haneda Airport Garden is a complex facility, which is connected to the Terminal 3 of Haneda Airport and consists of two hotels with a total of 1,717 guest rooms, commercial facilities, bus terminals, and other facilities. There will be about 20 restaurants of various types and about 60 stores in the shopping section, many selling items with a feel of Japanese culture. You will be able to enjoy eating and shopping just before leaving Japan! A natural hot spring facility of about 2,000 sq. m. is also to open in advance along with the hotels on December 21, on the rooftop of one of the hotels. Not only hotel guests but anyone can use the facility (4,800 yen for admission). From the bath, you can watch airplanes and enjoy a view of Mt. Fuji on a clear day.

Haneda Airport Terminal 3 Sta. (Keikyu, Tokyo Monorail)

www.shopping-sumitomo-rd.com/haneda/shopping/



March, 2023 Grand opening of animate Ikebukuro Flagship Store



Attracting attention of all the anime fans! One of the world's biggest anime culture trendsetters

The shop animate specializes in anime, manga, and game-related goods and items. In March 16, 2023, when the store will celebrate the 40th anniversary of its opening, animate Ikebukuro Flagship Store will have a grand opening after an expansion and renovation. A new facility will open, where you can enjoy not only shopping but also having fun using all your senses, such as watching, listening, and tasting! There will be some new facilities, including a multipurpose hall and event areas, where visitors can have fun. This place will be for sure more attractive to anime fans, filled with their favorite things!

Ikebukuro Sta. (JR, Seibu, Subway)

www.animate.co.jp/ex/ikebukuro2023/

Spring, 2023 Full renewal of the 5th floor of TOKYO Solamachi

A new playground for parents and kids to enjoy learning

Located at the foot of TOKYO SKYTREE, TOKYO Solamachi commercial facility will have a full renovation of the 5th floor in the East Yard Block, in time with the 10th year anniversary of its opening. Under the newly proposed concept of a "new kind of playground," a new indoor playground, "Chikyu no Niwa" will be a place where you can play as if you are outdoors. There will also be hands-on events to interact with nature and SDGs-related workshops. There will be a zone for babies and toddlers, which will be a safe place for families with small children to play.

Oshiage Sta. (Subway, Keisei), TOKYO SKYTREE Sta. (Tobu)

www.tokyo-solamachi.jp/en/



New hotels to
open soon

Dec. 21, 2022 160 rooms

VILLA FONTAINE PREMIER HANEDA AIRPORT

www.hvf.jp/eng/hanedaairport-premier/

Dec. 21, 2022 1,557 rooms

VILLA FONTAINE GRAND HANEDA AIRPORT

www.hvf.jp/eng/hanedaairport-grand/

May 19, 2023 97 rooms

BELLUSTAR TOKYO

www.bellustartokyo.com/global

Information on
permanently/
temporarily closed
businesses



Close of business on Jan. 31, 2023
Tokyu Department Store Honten

→Nearby facility Bunkamura, except for the Orchard Hall,
will also be closed for a long period from early April, 2023.

www.tokyu-dept.co.jp/honten/translation/eng.html

Closed from Apr. 2023
Shitamachi Museum

→Due to a major renovation, it will be closed until 2024
(the precise date is not yet determined).

www.taitocity.net/zaidan/shitamachi/

東京の最新情報は...
GO TOKYO
www.gotokyo.org/en



Go around TOKYO on slow-moving vehicles

Get on and off tramcar whenever you feel like it



■Tokyo Sakura Tram (Toden Arakawa Line)

The only Toden tram line left in Tokyo, Tokyo Sakura Tram (Toden Arakawa Line) runs through the *shitamachi* old "downtown" district in a retro atmosphere. The areas along the line are known as popular places for viewing cherry blossoms and roses. Visit places where you can see the way of life of the locals.

Sugamo Jizo-dori Shopping Street



Located on the approach to Koganji Temple, this shopping street with a total length of 780 meters is also known as "Harajuku for Grandmas," as the area has many shops and stores for elderly people (Harajuku is known as a center of Japanese youth culture and fashion). Enjoy eating while walking around and looking for cute "Sugamon," the official mascot character of the street.

sugamo.or.jp/en/

Asukayama Park



This park has been famous for beautiful cherry blossoms for about 300 years. The "Asuka no Komichi" path at the foot of the hill is known for picturesque hydrangea.

www.npd.jp/asukayamapark/

Tokyo Sakura Tram Route Map

Recommended retro-feel spots and flower spots along the line



Otsuka Rose Road



This section along the line is famous for the beautiful roses, with the largest number of varieties in Tokyo. Enjoy walking along the line surrounded by the fragrant aroma of roses.



The combination of a retro-feel station building based on the design of stations in Japan around 1955, the beds of rose bushes at the station, and the Toden tramcar creates a perfect photo-taking spot.

Joyful Minowa

Starting from the immediate vicinity of the station, this shopping arcade is lined with various establishments, including shops selling prepared food dishes and a supermarket. You can enjoy walking around and eating various kinds of food at reasonable prices.

Convenient Toden One-day Pass with a great discount!

It takes only about one hour to take the Tokyo Sakura Tram from start to finish. If you want to get on and off whenever you feel like it, Toden One-day Pass is highly recommended.

Available on Tokyo Sakura Tram car (onboard), at Toden commuter pass sales offices, etc.

*For more information, please check the website:

www.kotsu.metro.tokyo.jp/toden/

Regular fare	Adult 170 yen
One-day Pass	Adult 400 yen

Zoshigaya Kishimojindo



This temple enshrines the goddess of safe birth and child rearing, Kishimojin. On the temple grounds, various festivals, events, and handmade goods markets are held throughout the year. Don't miss the old Japanese candy store right on the temple grounds as well as the retro architecture along the approach.

www.kishimojin.jp/

Omokagebashi



In spring, you can see beautiful cherry blossoms hanging over the Kanda River. The surrounding area has a dye museum and Japanese gardens.

Now much attention is paid to such traveling styles such as those avoiding crowds, focusing on safety and security, and sustainable traveling. Why not try a new style of trip of going around on slow-moving vehicles? You will come across some attractive aspects of a town/area of the city in your slow traveling, which would be otherwise unnoticed. Let's go find them out!



Get a view of Tokyo from a water bus

■Tokyo Mizube Cruising Line

One of the major water-bus lines in Tokyo, Tokyo Mizube Cruising Line, is convenient for mainly traveling along the Sumida River. Each water bus has an observation deck, from where you can get a great view of Tokyo and you may be able to discover some previously unknown charms of Tokyo. As various popular events are offered, such as the Saturday night cruises and special cruises combined with various events, you should check out the cruising schedule.

www.tokyo-park.or.jp/waterbus/



TOKYO mizumachi



©TOKYO-SKYTREETOWN

Opened in June 2020, this complex facility underneath the elevated railway has various tenants, including restaurants, shops and stores and even a bouldering facility. Get some snacks and drinks to go and relax in Sumida Park next to it!

www.tokyo-mizumachi.jp/en/

Zojoji Temple



Located close to Tokyo Tower, this large temple has a long history. The massive main gate is still standing as it was built in 1622. Together with the adjacent Shiba Park, it is famous for the beautiful cherry blossoms.

www.zojoji.or.jp/en/

Asakusa Nitemmon



Sensoji Temple

Sumida kuyakushomae

TOKYO SKYTREE

Ryogoku Rivercenter

Etchujima

Seiropa Gardenmae



Tokyo Tower

WATERS takeshiba

Rainbow Bridge

Odaiba Kaihin Koen

Tokyo Mizube Cruising Line Route MAP

Recommended walking trails around the water-bus piers

Hama-rikyu Gardens



Photo credit: Tokyo Metropolitan Park Association

Built in the Edo period (1603-1868), this historic garden is a great place to enjoy plum and cherry blossoms in spring. The pond water is drawn from Tokyo Bay, which is rare for a garden pond. At a teahouse that looks like it's floating on the pond, you can enjoy matcha while enjoying the view of the gardens.

www.tokyo-park.or.jp/park/format/index028.html

WATERS takeshiba

This complex facility has a water-bus pier and a tideland area and consists of shops, restaurants, theaters, and a hotel. The open lawn space is a perfect place to relax and enjoy the waterside view with a drink in one hand.

waters-takeshiba.jp/en/

Photo credit: JR-EAST

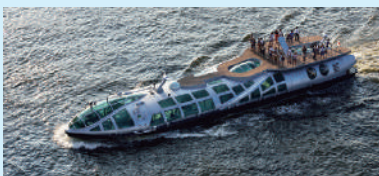


Other vessels are also fun!

TOKYO CRUISE (Tokyo Cruise Ship)

Along with Tokyo Mizube Cruising Line, TOKYO CRUISE is one of the major water-bus lines in Tokyo. The vessel with a design by Leiji Matsumoto, a famous Japanese SF cartoonist, looks like a spaceship.

www.suijobus.co.jp/en/



Tokyo Water Taxi

The first water taxi in Tokyo. It offers a chartered water taxi service, which can be booked on the day. Since the water taxi can take you through narrow canals and rivers, you can access various spots during a sightseeing tour. It also offers circular tours, which are growing in popularity.

water-taxi.tokyo/



Going under 15 bridges on a water bus

While you are on a water bus between Asakusa and Odaiba, do not forget to pay attention to the bridges. When going under the 15 unique bridges, you will hear on-board audio guides in Japanese, English and Chinese. After sunset, the illumination of the bridges beautifully reflects on the water.



I live in Tokyo


3rd

We are doing an interview series of foreigners who live in Tokyo, asking about attractive aspects of Tokyo. The third interviewee is Julien Legrand from Belgium. He told us about recommended spots in Tokyo and his favorite way of enjoying Tokyo.

I am originally from Belgium and have been living in Tokyo since 2016. As a tour guide, I have had the chance to guide foreign visitors in various areas of the city. One thing that never ceases to amaze me about Tokyo is that there is always something new to discover: a well-hidden shop, a newly opened restaurant, or even some unknown neighborhood.

One of my favorite areas is **Monzen-nakacho**. This town is home to two important places of worship. When walking in the alleys, one can sometimes hear the sound of chanted sutras and beating drums. If you go up north, you can also enjoy a walk along the historical canal, which offers magnificent scenery during the cherry blossoms season.

On the weekend I like to stroll in **Jinbocho**, the book town of Tokyo. There are over 140 bookstores with countless secondhand books. Don't worry if you cannot read Japanese, you can find plenty of modern art and photography books too. After browsing through the shelves, I always finish my day with a Japanese curry, the other specialty of Jinbocho.


Monzen-nakacho

Jinbocho

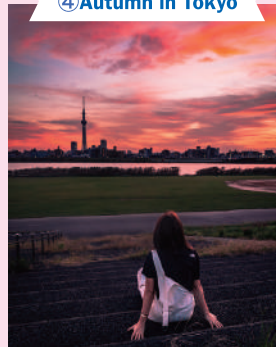

Announcing the winners of Instagram Photo Contest "Dreaming of Tokyo - How I Fell in Love with the City"!

A photo contest called, "Dreaming of Tokyo," was held through the TokyoTokyo Official Instagram (@TokyoTokyoOldmeetsNew) account. We called for photos showing "what made you fall in love with Tokyo" and ended up receiving many photos of Tokyo, including the urban areas and the islands, too, filled with seasonal charms. We would like to share some of the great photos from five categories filled with respective memories.

① My Best Tokyo

② Spring in Tokyo

③ Summer in Tokyo

④ Autumn in Tokyo

⑤ Winter in Tokyo


- ① The first crescent moon and TOKYO SKYTREE in 2022 (at the moon age of 2.65) by KEN MORIYA
- ② Surrounded by full-blown roses by Take
- ③ Flying through the summer sky! by morinii
- ④ Watching the town turning red with the sunset by sakaki
- ⑤ Dream on a snowy day by Takeshi Yoshimine



To see all the winners' photos, visit

tokyotokyo.tokyocameraclub.com/contest2022/en/

TokyoTokyo's official Instagram features Tokyo's tradition and innovation for people in Japan and other countries, every day. It also features photos and videos with the hashtag "#TokyoTokyo." We are looking forward to seeing your posting!

◆ The Official Tokyo Travel Guide

GO TOKYO
www.gotokyo.org/en



Editor's note There are two popular tourist destinations overlooking the metropolitan city of Tokyo, namely Tokyo Tower and TOKYO SKYTREE. They are especially beautiful at night with illumination: if you look up at them, you will be overwhelmed by the view. Both of these great symbols of Tokyo are wonderful places that can be enjoyed in both ways, from the bottom and from the top. On special days, the illumination of the towers with a special theme is a must-see!

