

October, 2022

Opening of the 150th anniversary special exhibition, "Tokyo National Museum: Its History and National Treasures"

All 89 national treasures are exhibited, along with a must-see exhibition space "National Treasure Sword Room"

Tokyo National Museum celebrated the 150th anniversary of its foundation in March 2022. The main event of the anniversary project, "Tokyo National Museum: Its History and National Treasures," will be held from October 18 to December 11, 2022. Among the museum's huge collection of 120,000 items, about 150 items will be exhibited, including all 89 National Treasures, which is the first time in its 150-year history. One of the main events is the "National Treasure Sword Room," where 19 National Treasure swords will be exhibited in one place, including one of Japan's most renowned swords, "Mikazuki Munechika Sword." It is a once-in-a-lifetime chance to see such swords altogether.

"Scenes In and Around Kyoto (Funaki version)" (right screen)
By Iwasa Matabei, Edo period, 17th century, collection of Tokyo National Museum,
exhibition period: Nov. 15-Dec. 11



Ueno Sta. (JR, Subway, Keisei)
www.tnm.jp/150th/en/

Blade of a Long Sword (Tachi),
Named "Mikazuki Munechika", Munechika, Heian period,
10th-12th century (Gift of Mr. Watanabe Seichirō, National Treasure)



August – October, 2022

Opening of the second part of "Gransta Yaekita," including new 10 tenants

Large-scale restaurant area directly connected to Tokyo Station

The restaurant area just outside the Yaesu North Exit of Tokyo Station had a major renovation and re-opened with 14 restaurants in April and May, 2022, under the new name "Gransta Yaekita." In a subsequent second-part opening, an additional 10 restaurants are to open from August to October. Some restaurants are already popular in Japan but never have a branch in Tokyo, including a long-established *monja-yaki* restaurant. "Multinational Zone" just opened on September 8. Toward the scheduled grand opening of the next fiscal year, Twelve more restaurants are scheduled to open after December, 2022.

Tokyo Sta. (JR, Subway) www.gransta.jp/mall/gransta_yaekita/

April, 2023 Opening of Tokyu Kabukicho Tower

A new hub in the biggest entertainment district in Tokyo

On the site of "Shinjuku Tokyu Milano," the complex facility that used to exist in Kabukicho, Shinjuku, "Tokyu Kabukicho Tower," a new complex facility with five underground floors and 48 floors aboveground, will be constructed. The height of the building is to be about 225 meters, which will be one of the highest buildings even among the high-rises in Shinjuku. The main tenants will be, a luxury hotel, an entertainment hotel, movie theaters, a stage theater, and a live performance venue on the underground floors. It will be a new landmark of Shinjuku, where visitors can enjoy all kinds of entertainment.

Shinjuku Sta. (JR, Seibu) tokyu-kabukicho-tower.jp/en/



New hotels to
open soon

9/28 199 rooms
JR-EAST HOTEL METS Omori
www.hotelmets.jp/omori/

11/1 345 rooms
VIA INN AKASAKA with Akane no Yu
www.viainn.com/en/akasaka/

11/16 161 rooms
The Royal Park Canvas Ginza Corridor
www.the-royalpark.jp/canvas/ginzacorridor/

Information on
permanently/
temporarily closed
businesses



Temporary closed from October 2, 2022
SKY CIRCUS Sunshine 60 Observatory
→The facility will be temporarily closed for renovation
for the 45th anniversary event of Sunshine City.
It is to re-open in spring 2023.

sunshinecity.jp/en/observatory/

Closed on October 2, 2022
Odakyu Department Store Shinjuku Main Building
→After the closing of the main building, the business will be
transferred to Shinjuku Nishiguchi Halc after its renovation.
The site of the main building will be used for a new complex
facility with 48 floors aboveground.

www.odakyu-dept.co.jp/foreign/en/shinjuku/

The Official Tokyo
Travel Guide
GO TOKYO
www.gotokyo.org/en



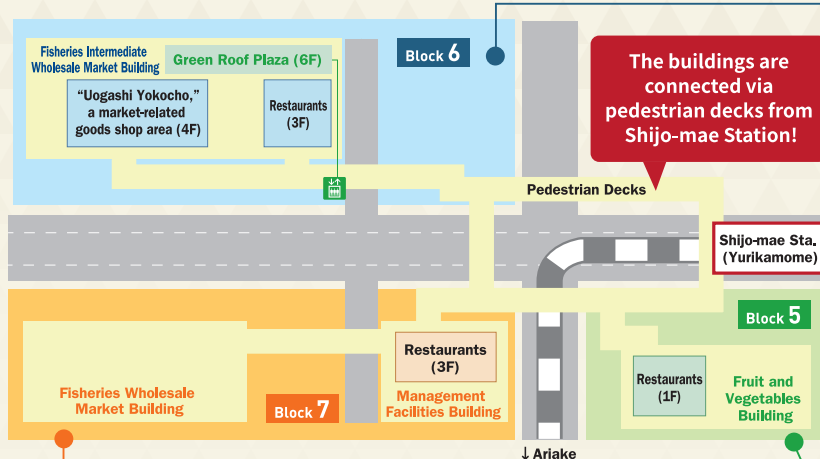
Complete walk-through of Toyosu Market



Toyosu Market opened in 2018 as a new center for logistics in Japan. The transfer of the Metropolitan Central Wholesale Fish Market, along with the tenants of the market, from Tsukiji with a history of more than 80 years raised a lot of interest. On April 24, 2022, public viewing has finally resumed after a long hiatus due to the COVID-19 pandemic. We introduce useful information to fully enjoy some fascinating aspects of Japan as well as the delicious food in the huge grounds of Toyosu Market!

Toyosu Market 品川駅 (Yurikamome)
www.toyosu-market.or.jp/en/

Map for areas open to public viewing



6
Block

Fisheries Intermediate Wholesale Market Building

You can watch how professionals buy wholesale seafood in this area. There are 22 restaurants in this area, which is the largest number of restaurants in a single block in Toyosu Market. On the 4th floor, there is "Uogashi Yokocho," a market-related goods shop area.

Photo Spot



Take a photo with a turret truck on display in the Visitors' Course.

7
Block

Fisheries Wholesale Market Building and Management Facilities Building

Here is the very place where the famous tuna auction takes place! The two buildings are directly connected. The Management Facilities Building, which is closer to the station, has 13 restaurants.

Photo Spot

Take a photo with the objet d'art of the biggest tuna that was ever brought to the market.



Let's observe the famous tuna auction!

You can watch the tuna auction from the Visitors' Course on the 2nd floor, but if you really want to "feel" it more closely, you should try to win a ticket in a drawing in advance to get into the "Tuna Auction Observation Deck," which is available only for ticket holders!

Observation time: 5:55-6:25

Observation fee: free

How to apply: Enter in a drawing to win a ticket through the website in the month before the desired date of observation.



5
Block

Fruit and Vegetables Building

The walls of the Visitors' Course are painted with the colors of vegetables and fruits that are in season from January to December, and the colorful interior makes visitors happy. Get off the pedestrian deck just before the "Fruit and Vegetables Building," and you can find three restaurants on the 1st floor.

Points to remember when visiting Toyosu Market

Toyosu Market is a place for food professionals to work from early morning. Enjoy observation while making sure you are not disturbing their work.

When the market is closed, the facilities are locked and not available for observation. The tenant's shops are also closed. Please make sure to check the market calendar on the website before visiting the market.

Photo courtesy of Tokyo Metropolitan Government Central Wholesale Market

For more details : www.shijou.metro.tokyo.lg.jp/english/toyosu/

Spots with delicious dishes in Toyosu Market

Tenfusa

1F, Fruit and Vegetables
Building in Block 5



This serves delicious *tendon* (tempura rice bowl) and tempura sets at reasonable prices.

toyosu.tsukijigourmet.or.jp/shop/5-tenfusa/



Ooedo

3F, Fisheries Intermediate
Wholesale Market Building in Block 6



Opened in 1909, this long-established restaurant serves various kinds of highest-quality seafood-don with generous amounts of fresh ingredients.

www.tsukiji-ooedo.com/

Mosuke Dango

3F, Management Facilities
Building in Block 7



Opened in 1898, this wagashi shop offers dango dumplings with a fine flavor. Various kinds of Japanese traditional sweets are also available.

www.mosukedango.com/



Let's go up to the Green Roof Plaza with a lawn and great outlook!

The Green Roof Plaza on the rooftop of the Fisheries Intermediate Wholesale Market Building in Block 6 is a great spot for a panoramic view of Tokyo Tower and Rainbow Bridge. You can get up there by taking the elevator in the middle of the Pedestrian Deck leading to the Fisheries Intermediate Wholesale Market Building.



Look for souvenirs at Uogashi Yokocho!

4F, Fisheries Intermediate Wholesale Market Building in Block 6

This area has about 70 tenants selling items for professional use, including food and household goods and items. Since the area is busy early morning with a lot of merchants moving around busily with their bulk shopping, it is recommended to visit here after 8 am.

Akiyama Shouten



Opened in 1916, this store specializes in selling Katsubushi (dried bonito flakes). High-quality Katsubushi, which is essential to Japanese cuisine, is sold by weight.

akiyamashouten.net/

Tsukiji Masamoto



This kitchen-knife store opened in 1935. Its sharp knives earn a high reputation from both Japanese and overseas professional chefs.

www.tukijimasamoto.co.jp/

Photo courtesy of Toyosu Market commercial cooperative: Uogashi Yokocho PR Planning office

Approach to "sustainable seafood"

"Sustainable seafood" is seafood that was captured by an environmentally-friendly method in order to effectively use limited marine resources and prevent overfishing. Toyosu Market has been engaged with various projects to promote sustainable seafood, such as offering sustainable seafood in collaboration with restaurants and supermarkets and developing sustainable dishes available at restaurants in Toyosu.

Recommended spots around Toyosu Market to visit

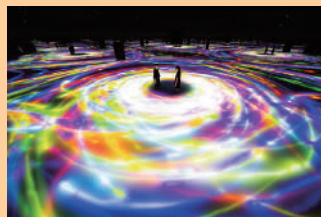
✧ Edomae Jokamachi



Opened in January 2020, this commercial facility outside the market has 18 tenants, including restaurants and retail stores. This area is recommended for visitors who want to casually enjoy delicious food unique to Toyosu.

📍 Shijo-mae Sta. (Yurikamome)
edomaejokamachi.com/

✧ teamLab Planets TOKYO



teamLab, Drawing on the Water Surface Created by the Dance of Koi and People - Infinity © teamLab

A huge-scale immersive art space created by teamLab, a collaborative group of artists, is where you can experience the dreamy world of art.

📍 Shin-toyosu Sta. (Yurikamome)
planets.teamlab.art/tokyo/

✧ Ariake Garden



This large-scale commercial facility consists of a theater, a spa, and a hotel in addition to a shopping mall with 200 tenants, including restaurants and apparel shops.

📍 Ariake Sta. (Yurikamome)
www.shopping-sumitomo-rd.com/ariake/shopping

I live in Tokyo



2nd

People from all over the world live in Tokyo. In this series, we ask some of them what they love about the metropolis. Our second contributor is Ms. Chang from Taiwan. Here, she tells us about her favorite places in the city.

I am a Taiwanese who just started living in Tokyo from June, but I studied here four years ago for six months. I am very happy to come back to Tokyo! I commute to work every day by train while looking at TOKYO SKYTREE, which makes me realize that I am really living in Tokyo, and I never get bored of looking at the tower even if I do that every day.

My hobby is handicrafts. So, I often visit **Nippori Fabric Town**. All kinds of materials for handicrafts are available there, not only fabrics but also leather materials and parts, and various metal parts. I love the time when I am wondering what I should make with the cloth I find on that day. On the way back from the place, I usually drop by “**Yuyake Dandan**,” the stairs perfect for viewing the sunset, and to enjoy the view of Yanaka Ginza Shotengai shopping street with its nostalgic atmosphere. If I am lucky, I may encounter some lovely local cats.

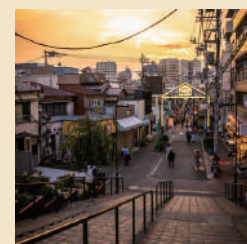


Handicraft materials and handmade items

Since I am a fan of Arashi, a popular Japanese boy band, I was really thrilled when I visited **Kagurazaka**, which was the setting for one of the TV dramas that Mr. Aiba-san, a member of Arashi, appeared on. Along Kagurazaka-dori Street, you can find retro-flavored places. If you go off the main street and enter small alleys, you can find some nice quiet restaurants! There are several historical shrines and temples, some of which often appear in dramas and movies. You can do both visiting filming locations and offering prayers at the same time.



Kagurazaka



Yuyake Dandan

Three Recommended spots for viewing autumn roses



You may think the season for roses in Tokyo is around May and early June, but there are also “autumn roses” that bloom beautifully around mid-October to late November. Autumn roses are slightly smaller in number and size compared to spring roses, but they have vivid colors and rich aromas.

Kyu-Furukawa Gardens

www.tokyo-park.or.jp/park/format/index034.html

Located in Kita City, Tokyo, this park was designated as one of the places of scenic beauty of Japan. You can enjoy a Western-style rose garden with about 200 roses of 100 varieties, a Western-style mansion which was built in 1917, and a quaint Japanese garden, all at once. The combination of the Western-style garden and the mansion creates a picture-perfect scene.

🚶 Kami-Nakazato Sta. (JR)



©Tokyo Metropolitan Park Association

Hibiya Park

www.tokyo-park.or.jp/park/format/index037.html

This is the first modern Western-style park in Japan and has about 670 roses of 60 varieties. Although it is surrounded by high-rises of the business district, it serves as an urban oasis where you can walk on the path among trees while looking at seasonal flowers and a fountain.

🚶 Hibiya Sta. (Subway)



©Tokyo Metropolitan Park Association

Tokyo Sakura Tram (Toden Arakawa Line)

www.city.arakawa.tokyo.jp/a022/kankoleisure/kankou/arakawasenbara.html

This is a popular tram line with a retro flavor, running through *shitamachi* (traditional districts) of Tokyo. Along the tram line in Arakawa City and Toshima City, many roses are planted. It is recommended to buy a One-day Pass, get off and on whenever you feel like it.

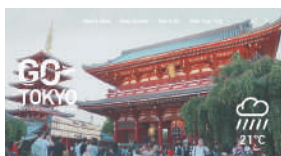
🚶 Minowabashi Sta., between Arakawa-yuenchi-mae Sta. and Arakawa-shakomae Sta., between Otsuka-ekimae Sta. and Mukohara Sta., etc. (Toden)



The Official Tokyo Travel Guide

GO TOKYO

www.gotokyo.org/en



Editor's note

Here is our Instagram account that will be surely useful for your next traveling plan. It provides information and photos of various attractive aspects of Tokyo on a daily basis, from popular tourist sites to less-known, unique local places. I am sure that you can find your favorite aspect of Tokyo! Follow us on Instagram to get the latest information on Tokyo. TokyoTokyo Official Instagram (@TokyoTokyoOldmeetsNew)

