

ENGLISH  
ver.

AMUSEMENT  
CITY

UENO  
ASAKUSA  
YANAKA  
TOKYO



# Feel Japanese culture through going around Ueno, Asakusa and Yanaka, and visit all over Japan!

"Taiko" includes "Yanaka" where is getting popular recently, "Ueno" and "Asakusa" where are top tourist spots of Japan. It is filled with pleasure of sightseeing in Tokyo, from tradition to cutting-edge, from shopping and gourmet to nature and art. This area has good access to far areas, therefore it can be called the hub point to travel all over Japan.



## YANAKA 谷中

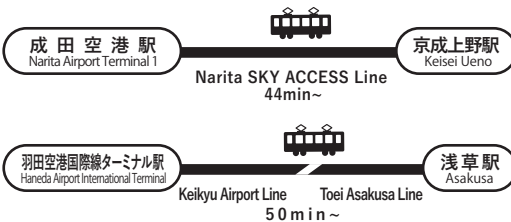
Yanaka, the town where the time flows slowly.

Nostalgic city that you can feel everyday-life. A new style of sightseeing in Tokyo, finding out old folk houses and crafts.



### Access from airports

From Narita Airport / Haneda Airport, you can go to Ueno · Asakusa directly by train.



\*This information is just estimation.



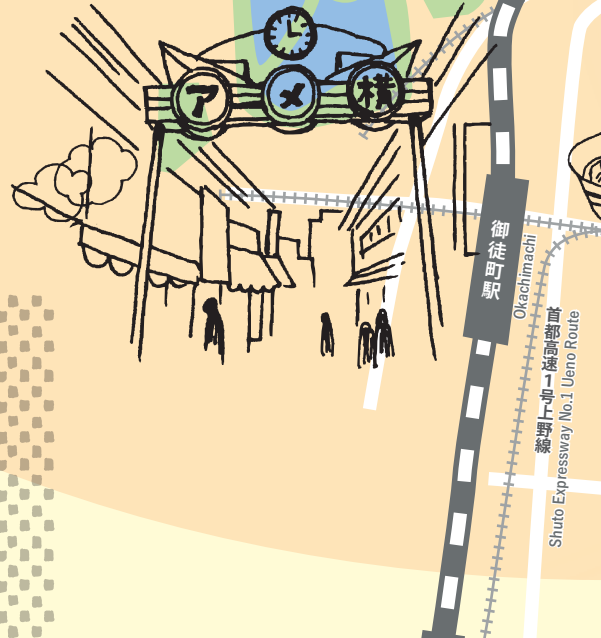
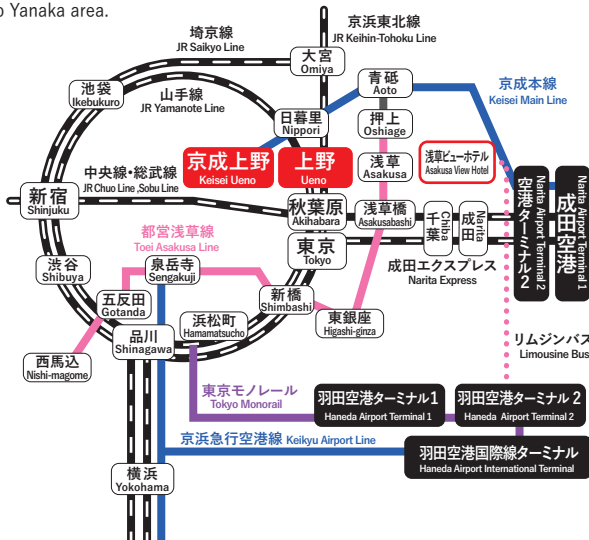
## UENO 上野

The spot where gourmet, shopping and art are all gathered

There are various ways to enjoy, such as Japanese gourmet which is easy to eat, many kinds of fun shops, zoos, and museums.

### Ueno · Asakusa · Yanaka and main tourist spots in Tokyo

Ueno is a hub station, likewise Tokyo station, and has good access to other major sightseeing spots by train / subway. It takes only about 5 minutes by train or underground to Asakusa station, and also to Nippori station which is the closest to Yanaka area.





## From here to all over Japan

Ueno is a terminal station for Shinkansen heading to northward such as Tohoku, Hokkaido, Niigata, Hokuriku region including Niigata and Kanazawa. Shinkansen heading to west such as Osaka, Kyoto, and Hiroshima is available at Tokyo Station. It takes about 5 minutes from Ueno Station by train.

上野駅  
Ueno

Hokkaido-Shinkansen "Hayabusa" 250min~	新函館北斗駅(北海道) Shin-Hakodate-Hokuto
Tohoku-Shinkansen "Hayabusa" 90min~ / Tohoku-Shinkansen "Yamabiko" 115min~	仙台駅(東北) Sendai
Hokuriku-Shinkansen "Kagayaki" 144min~ / Hokuriku-Shinkansen "Hakutaka" 170min~	金沢駅(金沢) Kanazawa
JR Ueno-Tokyo-Line 32min~ / JR Keihin-tohoku-Line 45min~	横浜駅 Yokohama
Tohoku-Shinkansen "Yamabiko" - JR Nikko-Line 92min~	日光駅 Nikko
Joetsu-Shinkansen "Toki" 81min~	越後湯沢駅 Echigo-Yuzawa
Hokuriku-Shinkansen "Hakutaka" 195min~	高崎駅 Takasaki
JR Joetsu-Line	草津温泉(長野原草津口駅) Kusatsu-onsen(Naganohara-Kusatsuguchi)
Hokuriku-Shinkansen "Kagayaki" 76min~	長野駅 Nagano
JR Yamanote Line	新大阪駅(大阪) Shin-Osaka
JR Yamanote Line	京都駅(京都) Kyoto
JR Yamanote Line	広島駅(広島) Hiroshima
JR Yamanote Line	博多駅(福岡) Hakata
JR Yamanote Line	東京駅 Tokyo

\*This information is just estimation.



ASAKUSA

浅草

The pre-eminent sightseeing spot in Japan, the charm remaining 400 history of Tokyo.

There are a lot of things to see including historical heritages and shops selling Japanese cuisine and Japanese accessories around Sensoji Temple.

# ASAKUSA

The pre-eminent sightseeing spot in Japan, the charm remaining 400 history of Tokyo.

There are many shopping districts showing history and various characteristics around Sensoji temple.

Visiting here many times from another point of view gives you opportunity to discover new things.

## Sensoji Temple 浅草寺

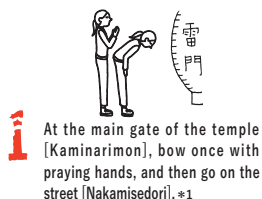
2-3-1, Asakusa, Taito

It is the oldest Buddhist temple in Tokyo, built in 628. In the precincts, there is the gate called Kaminarimon, having a large lantern as a landmark and a Five-Story Pagoda rising high and attracting a lot of tourists. It is the center of traditional "Edo" (old name for Tokyo) culture. In every season, traditional events such as "Sanja Matsuri" and "Hagoitaichi" take place.

## Manner

### How to visit a temple.

\*1 The names inside of [ ] are in the case of Sensoji.



(Use the ladle with your right hand to scoop water and rinse your left hand, then switch the ladle and rinse right hand, switch again and pour water from the ladle into your left hand, and use that water to rinse your mouth silently. Stand the ladle up so the remaining water washes down the handle.)

**4** Enter the main hall and worship at there.  
(Throw a coin to the box, clasp your hands in prayer towards and bow once, later bow once again. \*2)



**5** Bow and clasp your hands in prayer towards when leaving the main gate of the temple.

\*2 When you visit a shrine, you are supposed to do "two bows, two craps, and one bow".



## Nakamise-dori Street

### 仲見世商店街

It's one of the oldest shopping districts which goes from Kaminarimon (gate) to Sensoji (temple). There are about 100 shops along the street of 250 meters, and you can get souvenirs such as Japanese sweets, chopsticks, yukata (traditional cloth).



## Charms · Omikuji

There are several ways to pray for good luck at the temple/shrine. Omikuji is a type of fortune-telling that prays to Buddha/God and predicts your fortune. You can experience it at around 100 yen. Various kinds of charms are also sold there and each of them has specific purpose, such as health, study, good luck, etc. You can bring it or display it in the room.

## COLUMN





Having many unique shopping streets other than Nakamise shopping districts is one of the attractive points in Asakusa. If you walk around all of the streets and districts, you will be a master of Asakusa!!

## Hanayashiki-dori Street 花やしき通り

The street, having a lot of shops, seems to be the reappearance of the townscape of Tokyo 400 years before. It was designed after the establishment of "Hana Yashiki", the amusement park founded in 1853. There are lively shops selling Ninja goods and a photo shop where you can take photos with wearing Kimono.



## Hoppy-dori Street ホッピー通り

A shopping district where old-fashioned pubs are gathered. In an open atmosphere, you can enjoy "Nikomi" (Japanese stew) being popular at each shop and alcohol from lunchtime to late at night. "Hoppy", a kind of alcohol with a low calorie and beer taste, is special in here and match very well with "Nikomi".



## UNAGI

A kind of fish having high protein and nourishment, with a light taste. It's common in Japan to eat them as "Kabayaki", opening and skewering them, and grilling with sauce, or "Unajyu", putting that Kabayaki on rice. In Japan, there is a custom of eating eel on the special day called "Doyonoushinohi (the midsummer day of the ox)" once or twice a year.



## SUKIYAKI

One of the representative hot-pots in Japan. Beef, vegetables such as green onions and Chinese cabbages, and tofu, are boiled with the rich soup called "Warishita" that combines soy sauce, sugar and liquor. Eat these boiled ingredients with beaten raw eggs.



## Asakusa Rokku-dori Street 浅草六区通り

A shopping district where photographs of entertainers related to Asakusa are displayed, as theaters have gathered and prospered since the late 19th century. There are long-established coffee shop popular with pancakes, and large commercial facilities "ROX" and "Don Quijote" beside the street.



## Kappabashi Kitchen ware Town かっぱ橋道具街®

Tool stores related to foods are gathered here. They sell sophisticated cutleries and kitchenware made by craftsmen. It is also attractive that there are many shops that you can buy high quality product at a low price. Among shops dealing with food samples, displayed at a window of restaurants, you can try to make them by yourself.



## Unagi Komagata Maekawa Main Store 鰻 駒形 前川 本店

📍 2-1-29, Komagata, Taito  
🕒 11:30-21:00 (Last call: 20:30)  
📞 None



## Sukiyaki Imahan Main Store すき焼き 今半本店

📍 1-19-7, Asakusa, Taito  
🕒 11:30-15:00 (Last call: 14:30),  
17:00-20:30 (Last call: 20:00)  
📞 Tue.



# Find My # Asakusa // click

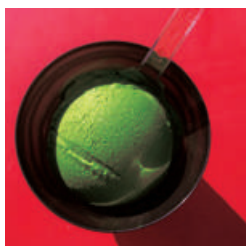


Find a spot that ordinal tours would not take you as well as night views of popular tourist spots.  
Let's take pictures of such your own favorite Asakusa. It would be great if you could upload the photos with  
"#ASAKUSA" and share your discoveries with your friends.



## Nezumi Kozo of Dembo-in Temple

At Denbo-in Street, there are six statues of characters in Japanese traditional entertainment "Kabuki"! Let's find them!



## A Matcha Ice cream

The richest matcha ice cream in the world, like eating a tea leaf directly.



## Houseboats and Skytree

The combination of houseboats and Skytree lighted up at night is a great view.



Build a house, spread a name.

## B The famous sweet in Tokyo

"Kaminariokoshi", made from rice, has much variety from standard to Western-style tastes.



## C Maneki-Neko

A shrine famous for matchmaking. There are many *maneki-neko* luck-beckoning cats on the grounds so it has also become a photo spot.



## Niimi at Kappabashi Kitchen ware Town

A huge statue of a male chef on the roof of a cookware store is a symbol of Kappabashi Kitchen ware Town.



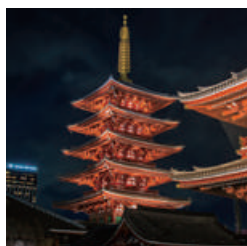
## D Fan

Fans made of Japanese paper with gorgeous Japanese designs, such as those used in traditional entertainment "Kabuki", are on shelves.



## The sculpture of Kaminarimon's large lantern

Looking up the big lantern from below, you can discover a beautiful dragon wood carving.



## E Lighted up

The Five-Story Pagoda with a solemn atmosphere emerges in the dark.



## F Leather Products

The traditional and colorful leather work embossed and painted on white leather.



## G Wall-arts on shutters

Rare wall-paintings which can be found only when the shops are closed. The history of Asakusa and seasonal events are drawn here.



## The view from Asakusa Culture Tourist Information Center

The view terrace on the 8th floor is the photo spot; you can see Nakamise shopping district and Hanayashiki.

Suzukien Asakusa Main Store

A.【善々喜園 浅草本店】 3-4-3, Asakusa, Taito 11:00-17:00 ⊗ Irregular Days Off

Tokiwado Kaminariokoshi Hompo

B.【常盤堂雷おこし本舗】 1-3-2, Asakusa, Taito 9:00-20:30 ⊗ None C.【今戸神社】 1-5-22, Imado, Taito

Bunsendo

D.【文扇堂】 1-30-1, Asakusa, Taito 10:30-18:00 ⊗ Mon. after 20th every month

Sensoji Five-Story Pagoda

E.【浅草寺五重塔】 1 Illumination lasts from sunset to 23:00

Nakamise-dori Street

G.【仲見世商店街】 1-36-3, Asakusa, Taito

Bunkoya Ozeki

F.【文庫屋大関】 2-2-6, Asakusa, Taito 10:00-18:00 ⊗ Wednesday



# ASAKUSA MAP

We will introduce a lot of shopping districts,  
fun shops, and any other useful spot for you!

## Asakusa Spot ①

Asakusa Entertainment Hall

### 浅草演芸ホール

Colorful banner flags are the  
earmark! You can see traditional  
entertainment "Rakugo" which  
one person plays multiple roles  
and talks funny stories.



Kappabashi Kitchen ware Town  
かっぱ橋道具街®

Kokusai-dori Avenue  
国際通り

Tsukuba Express Asakusa Station  
つくばエクスプレス浅草駅

Asakusa Roku-dori Street  
浅草六区通り

Asakusa Entertainment Hall  
浅草演芸ホール

Hoppy-dori Street  
ホッピー通り

Shin-Nakamise-dori Street  
新仲見世通り

Orange-dori Street  
オレンジ通り

Kaminarimon-dori Street  
雷門通り

Niimi at Kappabashi Kitchen  
ware Town  
かっぱ橋のニイミ

Tokyo Metro Ginza Line  
東京メトロ銀座線

Tawaramachi Station  
田原町駅

Shin Okachimachi Station  
新大塚駅

## Asakusa Spot ②

Asakusa Hanayashiki  
浅草花やしき

The oldest amusement park  
in Japan started in 1853. It is  
full of fun attractions.



- ① 10:00-18:00  
(Operating time depends on  
season and weather)
- ② None

Senzoku-dori Street  
さんそうくどり通り

Suzukien Asakusa Main Store  
壽々喜園 浅草本店  
Kototai-dori Avenue  
言問通り

Hanayashiki-dori Street  
花やしき通り

② Asakusa Hanayashiki  
浅草花やしき

Sensoji Temple  
浅草寺

Five-Story Pagoda  
五重塔

Bunkoya Ozeki  
文庫屋大関

Nezumi Kozo of Dembo-in Temple  
伝法院のねずみ小僧

Wall-arts on shutters  
シャッター壁画

Bunsendo  
文扇堂

Sukiyaki Imahan Main Store  
すき焼き 今半本店

The sculpture of  
Kaminarimon large lantern  
雷門の大提灯

Asakusa Station  
浅草駅

Toei Asakusa Line  
都営浅草線

Asakusa Station  
浅草駅

Unagi Komagata  
Maekawa Main Store  
鰻 駒形 前川 本店

Komagata Bridge  
駒形橋

Shuto Expressway No.6  
首都高速 6 号向島線

Mukojima Route  
向島線

Asakusa Station  
浅草駅

Asakusa Station  
浅草駅

Asakusa Station  
浅草駅

Asakusa Station  
浅草駅

Asakusa Station  
浅草駅

Asakusa Station  
浅草駅

Asakusa Station  
浅草駅

Asakusa Station  
浅草駅

Asakusa Station  
浅草駅



0m 100m



# UENO

Gourmet, shopping  
and art zone



## POPULAR TRADITIONAL FOOD

We picked out Japanese foods you should eat in Japan! The feature of Japanese dishes is mild tastes with the best use of the original taste of ingredients. Please enjoy the local taste with Japanese people.

### YAKINIKU

In Japanese style Yakiniku, meats are cut into small pieces, you grill them by yourself on the iron plate attached on the table. There are many kinds and parts of meat, such as beef, pig, chicken, and hormone. Please eat them with sauce.

Ueno Taishoen Ueno-Ekimae Store  
上野 太昌園 上野駅前店

📍 6-13-1, Ueno, Taito  
🕒 11:00-23:00 (Last call: 22:30)  
🍷 None

### SOBA

It is thin noodles made from buckwheat, eating with warm soup or mild soy source soup in a cold state. Japanese are familiar with eating them as they eat at new year's eve, also you can have them at the counter in some shops without sitting on a seat.

上野蕎そば Ueno Yabusoba

6-9-16, Ueno, Taito 📍  
11:30-21:00 (Last call: 20:30) 🕒  
Wed. every other Tuesday 🍷



### SUSHI

Popular Japanese foods, raw fish and shellfish on rice seasoned with vinegar. Seasonal fish is used for sushi, and other than normal style "Nigiri", there are kinds of sushi "Gunkan" or "Maki", eating rice and fish rolled with dried seaweed.

よし寿司 Yoshizushi

📍 6-7-8, Ueno, Taito  
🕒 Mon.-Fri. 11:30-14:30 (Last call: 14:00),  
17:00-23:00 (Last call: 22:30)  
Sat. 11:30-23:00 (Last call: 22:30),  
Sun. 11:30-22:00 (Last call: 21:30)  
🍷 Jan. 1st.

## JAPANESE RAMEN

There are a lot of gourmets from traditional Japanese foods, ramen, to "Izakaya" which symbolizes nightlife. After eating, you can go shopping or appreciating arts. Please enjoy various aspects of Ueno.

Ramen is originally from China but Japanese have developed it in our own way of eating. You can enjoy a variety of soup tastes and ingredients.

### TONKOTSU

A Tonkotsu (pork bones) ramen shop is popular for thin noodles and silky soup, the taste of Tonkotsu extracted as much as possible, and a rich smell. Side dishes such as one bite sized Chinese dumpling are also popular.

Hakata Ippudo Ueno-Hirokoji Store  
博多 一風堂 上野広小路店

3-17-5, Ueno, Taito 📍  
Mon.-Thu./Sun. 10:00-22:30 🕒  
Fri./Sat. 10:00-23:30  
None 🍷



### SHOYU

Ramen consisted with transparent soup made from chicken bones, rich soy sauce and thin curly noodles.

珍々軒 Chinchinken

📍 6-12-2, Ueno, Taito  
🕒 Tue.-Sat. 10:00-23:00,  
Sun. 10:00-20:00  
🍷 Mon.



### HALAL

Halal certified ramen. Noodle is flat, and soup has light taste using seafood and chicken. Muslim people can enjoy meals without worries.

Ayam-YA

3-10-3, Motoasakusa, Taito 📍  
11:30-15:00 (Last call: 14:30), 🕒  
17:00-22:00 (Last call: 21:30)  
New Year's Holiday 🍷



## COLUMN

### 🕒 Conveyor-belt sushi

At "Conveyor-belt sushi" restaurants, sushi on the dish go round on an annular rail set. You can take sushi as you like, and eat them made by chefs at low cost. Not only sushi but also sweets and side dishes like udon are popular.





Ueno's remarkable sweets.

## UENO SWEETS

After eating a lot, take a break with sweets

You can drink panda cappuccino at Café NIKI.



### Panda sweets

Many stores in Ueno offer sweets such as art latte and cakes designed panda-looking, derived from the popular panda of Ueno Zoo.

カフェニキ Café Niki

📍 4-6-1, Ueno, Taito  
🕒 10:30-19:00 (Last call: 18:45)  
⊗ None  
🍵 Panda cappuccino

### Dorayaki

Japanese sweet sandwiching plenty of bean paste with two Japanese-style pancakes. It is popular for the soft feeling of honey-containing dough which matches with red beans boiled with sugar.



うさぎや Usagiya

📍 1-10-10, Ueno, Taito 🕒 9:00-18:00 (Dorayaki until 16:00) ⊗ Wed.

### Anmitsu

Japanese traditional sweet putting black sweet honey on agar, boiled beans, fruits, bean paste and so on. The one with ice cream is also popular.

Mihashi Ueno Main Store  
みはし 上野本店

4-9-7, Ueno, Taito 📍  
🕒 10:30-21:30 (Last call: 21:00) ⊗  
Irregular Days Off ⊗



## Japanese Bar

## Night Life

## Japanese "IZAKAYA"

Izakaya is where you can casually enjoy meals and alcohol together. Many Izakaya are usually found near stations so workers can enjoy eating and drinking with colleagues and friends after working. Order beers and meals, and have fun nightlife with Japanese people!



Ueno's representative shop, delicious for Motsu hotpot Izakaya which has been popular in Ameyoko since 1950. You can enjoy exchanging with customers and having special stew with miso taste using a horse offal.

Motsuyaki Daitoryo  
もつ焼大統領  
📍 6-10-14, Ueno, Taito  
🕒 10:00-24:00 (Last call: 23:30)  
⊗ None



### IZAKAYA Manner

### Manners unique to Izakaya

1

#### Order

You order alcohol first. When you want to order, say "Sumimasen" or "Onegaishimasu" (meaning "please") to clerks. Since dishes are small amount and cheap, you can enjoy a variety of dishes. Asking recommendations to clerks and other guests are also enjoyable.

2

#### Appetizer (service charge)

After ordering the first drink, a simple dish separately from the one you ordered may be served. This is a service while you are waiting for the ordered dish, but it costs. In the case that it's unnecessary for you, please ask a clerk when you make orders; you can refuse it.

3

#### Recommended menu

There are standard menus in Izakaya. "Yakitori" is a dish grilling chickens skewered by a bamboo stick and you can choose which part of chicken you want to eat and which taste you prefer to add. "Oden" is a dish which vegetables such as potatoes and Japanese radish, and ingredients such as eggs and konnyaku are cooked with soup stock till they become soft. Please enjoy your meal while drinking draft beers with mugs or drinking sake.

# AMEYOKO/UECHUN MAP

"Ameyoko"・"Uechun shopping district" have a lot of shops selling various stuffs such as food, sweets, clothes, knick-knacks, and cosmetics. You might unexpectedly find your favorite ones with low price because there are many affordable shops! Enjoy lively shopping here.

## Delicacy

## Ueno Shopping 2



This shop is unique in the sense that it is not only a fish market but also Izakaya (Japanese pub). You can taste fresh seafood together with alcohol there. It is also recommended to try the one with special taste.

## Capsule toy

Put coins in the machine and turn the dial, then a toy in the capsule comes out randomly. It is rich in variety from straps and mascots to character goods.



## Ueno Shopping 1



## Ameyoko

### アメ横

It is a shopping district where about 400 shops jam in 500 meters long under the girder bridge from JR Ueno station to Okachimachi station. It is a lively market which had been developed since the post-war period and originated from street stalls run by local people. There are stores selling food, clothes, knick-knacks, jewelry items, etc. Besides dishes which Japanese have in daily life, you can enjoy seeing the way of selling as tons of snacks and sweets are sold with one package.

## good for souvenir

We introduce shops where you can purchase Japanese snacks, cosmetics, knick-knacks, home electric appliances etc. with low price. A lot of attractive products may make you feel difficult to choose which to buy.



**A** Takeya Okachimachi Main Store  
多慶屋 御徒町本店

A discount store where you can get various things such as snacks, food, home electric appliances, and clothing items all tighter. It is available for travelers having a tax-free counter, free Wi-Fi, and multilingual support.



**B** Ueno Marui  
上野マルイ

A department store which is located in major cities all over Japan, mainly in Tokyo. It has many shops selling things related to our daily life (so called "life-style shop") as well as restaurants.

## UENO Information Center

- 📍 Ueno Marui on 2F
- 🕒 Same as Ueno Marui
- 🗣️ Japanese/English/Chinese



**C** Niki-no-Kashi Ueno-Ameyoko Daichi Eigyocho  
二木の菓子 上野アメ横 第一営業所

A store which has about 5,000 kinds of sweets and snacks and specializes in them. You can find unique one even for Japanese.

## COLUMN

● Depachika 📍 Matsuzakaya Ueno Store 【松坂屋上野店】3-29-5, Ueno, Taito 🕒 10:00-20:00 🗓️ Jan. 1st.

The underground of department stores like "Matsuzakaya" has a food district. A little bit luxury daily dish, box lunch, sweets, and alcohol are sold here. Customers often visit here to look for meals at home and gifts. Please find out a special gourmet in here.





# UENO CULTURE

## Enjoy the culture of Ueno park

Many art galleries and museums are gathered in Ueno Park, and there is also the most popular zoo in Japan. In addition, there is full of nature and a lot of people come here to enjoy seasonal scenery with cherry blossoms and autumn color of leaves.



(公財) 東京動物園協会

## Ueno Zoo 上野動物園

It is the first zoo opened in Japan, displaying 2,500 animals and birds of about 350 species around the world in the nearly wild. Okapi, the rare animal in the world, and Aye-aye, which you can only see here in Japan, and Shoebills, an endangered species are found here.

📍 9-83, Ueno Koen, Taito 🕒 9:30-17:00 (Admission till 16:00)  
⊗ Mon. (in the case that Monday is holiday/citizen's day, the next day) / New Year's holiday 🎫 General: 600yen



## Tokyo National Museum 東京国立博物館

A museum which contains more than 117,000 art works from Asian countries mainly from Japan, ranging from potteries, sculptures, swords and Japanese paintings. The building has the characteristic green dome roof and "Hyokeikan", which is registered as an Important Cultural Property, therefore it is a historic worthy building.

📍 13-9, Ueno Koen, Taito 🕒 9:30-17:00 (Admission till 16:30)  
⊗ Mon. (in the case that Monday is holiday/citizen's day, the next day) / New Year's holiday  
🎫 General: 1,000yen, college student: 500yen (permanent exhibition)  
● English / (Simplified) Chinese / Korean

## The National Museum of Western Art 国立西洋美術館

📍 7-7, Ueno Koen, Taito  
URL <https://www.nmwa.go.jp/>  
🕒 9:30-17:30, Fri./Sat. 9:30-20:00 (permanent exhibition/planned exhibition) ※ Admission is until 30 minutes before closing  
⊗ Mon. (in the case that Monday is holiday/citizen's day, the next day) / New Year's holiday  
🎫 General: 500yen, college student: 250yen (permanent exhibition)

It exhibits a wide range of Western art such as paintings by Impressionists and French modern sculpture mainly by Rodin. The building was designed by the French architect Le Corbusier and was registered as a World Heritage Site as one of 17 assets of "The Architectural Work of Le Corbusier, Outstanding Contribution to the Modern Architecture Movement".



© 国立西洋美術館

## Find My # Ueno

Discover unique places and things, and take pictures of your favorite parts of Ueno. Please upload the photos with "#UENO" and share them in social media.



### Giant panda at Ueno station

There is a cute big panda statue at JR Ueno station!

【ジャイアントパンダ Giant Panda】  
📍 Ueno station, 7, Ueno, Taito



### Red Torii (gate) of Hanazono Inari shrine

Worship God who is connecting food, clothing and shelter and protecting a life. The scenery of red Torii gates with wishes lining up is so impressive.

【花園稲荷神社 Hanazono Inari Shrine】  
📍 4-59, Uenokoen, Taito



### Swan boat at Shinobazu Pond

Let's take a cute swan-shaped foot-rowing boat at the Shinobazunoike pond in Ueno Park.

【不忍池 Shinobazu Pond】  
📍 5-20, Uenokoen, Taito

# YANAKA

Yanaka, the town where the time flows slowly

There are a lively shopping street as well as old Japanese-style houses. Interaction among people and old townscape which the time flows slowly remain here.



## About "Shitamachi"

In the Edo period when the Tokugawa family (authority) had kept Bakufu (the government) in Edo (Tokyo) for about 260 years since 1603, the area where merchants and ordinary people live spreaded under Edo Castle was called "Jyokamachi (castle town)", and later it's turned to be called "Shitamachi (Old town)". Shitamachi still has a nostalgic life as you can find the scenery of a shopping street, traditional private shops, and wooden houses as well as daily communication among neighbors and festivals at a shrine. "Yanesen" area where Yanaka, Nezu, and Sendagi are all combined is representative in Tokyo.



## Find My #Yanaka

Yanaka is filled with shops that you would like to drop by. Let's find your favorite parts of Yanaka and take pictures of them. Please upload the photos with "#YANAKA" and share them in social media.



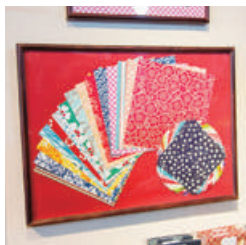
### A Japanese snack

A Japanese snack which is made by baking and frying Japanese rice that are smashed and extended.



### B Traditional Japanese paintings

In traditional Japanese paintings, paints were made by using natural materials such as rocks, stones, plants, etc. The current rock paints have been developed uniquely in Japan, and produce a gradation with about 2,000 colors using natural and artificial rocks.



### D Japanese paper

Japanese paper with various kinds of Japanese designs, used for making Origami (folding paper into shapes) and decorating craft products. Designs have variety, such as traditional patterns and pictures with themes of nature and life of the specific period in the history.



### E Minced meat cutlet

Minced meat cutlet which is cooked by frying ground meat with batter can be eaten at an affordable price, and perfect for side dishes.



### C Yanaka Cemetery

The graves of many prominent figures are here, including Yoshinobu Tokugawa, the last shogun of the Edo Shogunate. The row of cherry blossom trees in the center of the cemetery are quite beautiful, and this place is known as a famous site for seeing cherry blossoms.



### F Gallery

At the gallery where the 200-year-old public bath has been renovated, works of Japanese prominent artists and overseas great artists are displayed.

Photo by Norihiro Ueno. Courtesy of SCAI THE BATHHOUSE

### A 【谷中せんべい Yanaka Rice cracker】

📍 7-18-18, Yanaka, Taito

🕒 10:00-17:30 ☒ Tue.

### B 【金開堂 Kinkaido】

📍 1-5-10, Yanaka, Taito

🕒 9:30-18:30 ☒ Sun./Holiday

### C 【谷中霊園 Yanaka Cemetery】

📍 7-5-24, Yanaka, Taito

🕒 8:30-17:15

### D 【いせ辰 Isetatsu】

📍 2-18-9, Yanaka, Taito

🕒 10:00-18:00 ☒ None

### E 【肉のサトー Niku-no-Sato】

📍 3-13-2, Yanaka, Taito

🕒 10:30-19:30 (Sales of fried foods 12:00-)

☒ Mon.

### F 【SCAI THE BATHHOUSE】

📍 6-1-23, Yanaka, Taito

🕒 12:00-18:00 ☒ Sun./Mon./Holiday



## Notes on Yanaka Sightseeing

In Yanaka there are many shops that the old private houses are renovated and you can catch a glimpse of the life in Japan, but there are also many common private houses that do not open stores. Please be careful not to enter such private houses.





# YANAKA MAP

## Yanaka Town Walking Spot

Discover attractive spots ahead of narrow alleys.  
Please take a walk and explore Yanaka.

### Yanaka town walking scenery 1

"Hatsunekoji", a little dark alley that you may miss, is a restaurant street where hidden good restaurants line up.



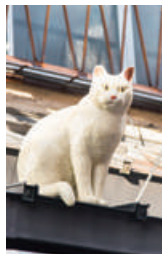
### Yanaka town walking scenery 2

There remain a lot of wooden buildings which was built decades to hundreds of years ago in the town.



### Yanaka town walking scenery 3

You can see figurines and products of cats everywhere in the town. Real cats are also found often.



## ★ ★ ★ Night Life ★ ★ ★

There are many shops closed early in this town along their own life, but there are renovation spots that make fun night in Yanaka.

【HAGISO】📍 3-10-25, Yanaka, Taito ☎ 03-5832-9808(Cafe), 03-5834-7301(Hotel)  
🕒 Sun.-Thu. 8:00-10:30, 12:00-20:00(Last call: 19:30)  
Fri.- Sat. 8:00-10:30, 12:00-21:00(Last call: 20:30)  
ⓧ None (It may be temporary closed)

It is a cultural complex facility which wooden apartment building for over 60 years is renovated. There are a cafe-art gallery on the first floor and a hotel reception & shop of hotel near here on the second floor. At the cafe you can taste a coffee brewed carefully and a menu using seasonal ingredients.

## Cafe



# AMUSEMENT CITY EXPERIENCE

Japanese culture is attractive, but you should do more than just looking it!  
The premium experience to feel true Japan at the best cultural place  
in Tokyo will make your trip more memorable.

## Jinrikisha

"Jinrikisha" is a two wheeled vehicle a person draws and it was a major transportation until about 100 years ago. Currently it is used for sightseeing, knowledgeable Jinrikisha man will explain sightseeing spots and town. Let's enjoy going around a sightseeing spot efficiently in Asakusa by Jinrikisha.



Ebisu-ya Asakusa Store  
えびす屋 浅草店

📍 1-34-2, Asakusa, Taito  
🕒 9:30 - sunset  
⊗ None



## Japanese Traditional Clothes experience

If you go for a walk through a traditional street, you will feel excited if you wear kimono and your body and mind would become Japanese. Let's enjoy your favorite style by selecting from various colors of kimono. It is recommended to check in advance because there are many shops that need reservations for rental.

Asakusa Kirara  
浅草きらら

📍 1-3-2, Hanakawado, Taito  
🕒 10:00-18:00  
⊗ None  
※ Reservations necessary



## Tea ceremony experience

"The tea ceremony" is a method of making tea and Japanese unique comprehensive traditional culture. You can feel "Omotenashi", the spirit of hospitality in Japan, through experiencing the modest and tasteful culture at formal tea room and eating delicious Matcha and Japanese sweets.

Shizu-Kokoro Chado School  
静心茶道教室

📍 1-9-8, Nishiasakusa, Taito  
🕒 10:00-18:00  
(Tea ceremony: Tue.-Sat.)  
⊗ Sun. / Mon.  
※ Reservation is necessary  
(available any time if the reservation is not full)  
🌐 <https://www.teaceremony.co>







## Making Sushi experience

How do sushi chefs make sushi quickly and beautifully? Trying it by yourself must make you feel better taste when you have sushi. Besides classic-style sushi (Nigirizushi), you can make sushi rolls (Makizushi) and your own original sushi.



浅草すし賢 Asakusa Sushiken

📍 2-11-4, Asakusa, Taito

🕒 12:00-15:00, 17:00-22:00

🗓 Wed.

※ Reservation is necessary / Halal certification is acquired

## Food sample making experience

You can make food samples which look like real dishes lining up in front of shops at Japanese restaurants. Let's make food samples of two tempura and one lettuce with traditional method of using wax. It is also recommended to buy original products that you can use every day such as straps.

Ganso Shokuhin sample-ya Kappabashi Store

元祖食品サンプル屋 合羽橋店

📍 3-7-6, Nishiasakusa, Taito

🕒 10:00-17:30

🗓 New Year's Holiday

※ Reservation is necessary by phone in Japanese / Interpretation is not available

☎ 0120-17-1839



## Ninja experience

At the NINJA Information Center, you can learn about the cultural and historical aspects of Ninja that have continued for over 400 years. You can do this through a wide range of first-hand experiences, such as the "Ninja Experience" where you can learn the basics about ninja, the "Ninja School" aimed at families, and the "Way of Ninja Experience" where you can learn fundamental ninjutsu. You can wear ninja costumes at these experiences. Taking pictures is also allowed within the facilities and at the exhibitions showing the tools that ninja used. For "Ninja Experience," "Ninja School" and "Throwing Knife Experience," you can participate in without reservation.

NINJA Information Center Tokyo&Dojo

忍者インフォメーションセンター東京&道場

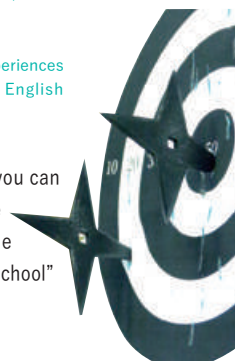
📍 Yamano Asakusa Building 6F, 2-17-8

Kaminarimon, Taito

🕒 12:00-19:00

※ Reservations: Some experiences require reservations / English speaking staff available

☎ 03-5830-6730



# Tourist info

Ueno・Asakusa・Yanaka, the top tourist destinations in Tokyo, provide facilities and services to help your sightseeing.  
If you have any troubles even a little, please don't hesitate to ask at each facility.



## ASAKUSA

### Asakusa Culture Tourist Information Center

The tourist information center in front of Kaminarimon Gate. On the first floor at the information counter, you can receive tourist information in 4 languages. There are convenient facilities such as free Wi-Fi, foreign currency exchanges, information desk, nursing room, etc. From the cafe and observation terrace on the 8th floor, you can overlook the

Asakusa townscape and the Tokyo Skytree.



- 📍 2-18-9, Kaminarimon, Taito, Tokyo
- ☎ 03-3842-5566
- 🕒 9:00-20:00 (8F view terrace/-22:00)
- ⊗ None
- 🗣 Japanese, English, Chinese, Korean



## UENO



### Ueno Information Office

Not only guiding you to tourist spots in Ueno area in multiple languages, it also sells gifts featuring tradition and newness of Ueno, such as Ueno's unique museum goods, regional traditional crafts and various goods by up-and-coming creators. You would be welcomed by staffs wearing Kimono, traditional clothe.

- 📍 3-29-5, Ueno, Taito Matsuzakaya Ueno store B1F
- ☎ 03-3832-1111 🕒 10:00-20:00
- ⊗ Same as Matsuzakaya Ueno Store
- 🗣 English, Chinese, Taiwanese (Chinese and Taiwanese are available when there are staffs who can speak them.)



## YANAKA

### YANESSEN Tourist Information & Culture Center

In addition to providing information about sightseeing, accommodations, cultural experience facilities and bicycle rental, you can experience various Japanese culture such as tea ceremony, ink painting, Kabuki under the support of interpreter staffs. We also introduce tourist volunteers in various parts of Japan and guide sightseeing spots around Yanaka.



- 📍 3-13-7, Yanaka, Taito ☎ 03-5834-7025
- 🕒 11:00-19:00 ⊗ None 🗣 English

# Information

Taito provides restaurants that Muslim travelers can enjoy at ease, free sightseeing tours, tourist information website with multilingual support, etc. We look forward to your visit.

### • Taito is friendly to Muslim

In order to make Muslim travelers feel at ease with eating and drinking, Taito is promoting Halal restaurants to get "Halal certification" as a proof in the yard. Also, "Muslim Omotenashi Map in Taito-ku" introduces tourist spots recommended for Muslim travelers. (You can get the map at Asakusa Culture and Tourism Center etc.)



[https://authentic-tokyo.com/assets/files/muslim\\_2018\\_en.pdf](https://authentic-tokyo.com/assets/files/muslim_2018_en.pdf)

### • Free Guide Tour for Foreign Tourists (English)

Tourists can participate in a walking tour which English guides take you to Ueno Park, Sensoji Temple and Yanaka area for free. You can enjoy sightseeing while learning the region's history and recommended shops.

#### [TOKYO SGG CLUB]

##### Sensoji temple and the surrounding area

Mon./Thu./Sat./Sun.  
10:30- (approx.90min)/ 13:15- (approx.90min)  
Meeting point: Asakusa Culture Tourist Information Center 1F counter (2-18-19, Kaminarimon, Taito)

##### Ueno Park and the surrounding area

Wed./Fri./Sat./Sun.  
10:30- (approx.90min)/ 13:30- (approx.90min)  
Meeting point: Ueno green salon SGG club counter (7-47, Ueno-koen, Taito)

##### Around Yanaka area

Sat./Sun.  
10:30- (approx.90min)/ 13:30- (approx.90min)  
Meeting point: Asakura Museum of Sculpture (7-18-10, Yanaka, Taito)  
\* Please arrive at least ten minutes before the starting time.  
Up to about the first 10 arrivals can join each tour.

### • English version WEB site (Visit Authentic TOKYO)

About 100 languages in the world including Asian countries are available. Aside from creating original walking plans from more than 100 tourist spots in the area as you like, it is constantly providing up-to-date information of restaurants, accommodations and cultural experiences. Furthermore, the English-native staff living in the district will send announcements and reports of the latest events, introductions of unique tourist spots in local area.

