

July Opening of TOKYO TORCH Terrace and TOKYO TORCH Park at TOKYO TORCH Tokiwabashi Tower

The grand opening of the large square at TOKYO TORCH Tokiwabashi Tower in the area under development in front of the Nihonbashi Exit of Tokyo Station took place on July 21, along with the pre-opening of one part of the commercial zone.

The commercial zone on the 1st basement and 1st to 3rd floors, called TOKYO TORCH Terrace, will have 13 individualistic tenants, mainly well-established regional restaurants, offering various delicious dishes, some of which will have their first branch in Tokyo, as well as others opening their first branch in Japan. The large square in front of TOKYO TORCH Terrace, called TOKYO TORCH Park, has a terrace space, where people can enjoy eating and drinking outside.



Check out the cafeteria lounge, called "MY Shokudo," on the 3rd floor. Based on the theme of a "rich table connecting people," it is established as a common service space mainly for employed workers of this facility, but is also available to the public at night.

At the square, you can see various projects carried out in collaboration with local municipalities to showcase the culture and attractive aspects of Japan, such as a "pond with nishikigoi carp" with *nishikigoi* (brocade) carp from Ojiya City, Niigata Prefecture, and "Tsukuba's natural lawn" from Tsukuba City, Ibaraki Prefecture. They are one of the highlights of the area.

The final completion of the whole area of TOKYO TORCH is scheduled to be in 2027. All eyes are upon this increasingly popular area in front of Tokyo Station.

📍 Tokyo Sta. (JR, Subway), Otemachi Sta. (Subway) tokyotorch.mec.co.jp/

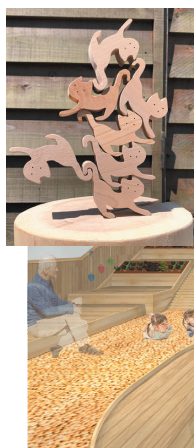
November Opening of Hinohara Toy Museum

In Hinohara Village, the only village in Tokyo except for the islands, a toy museum will open, where you can learn about the attractiveness of wood and enjoy yourself by experiencing Hinohara's natural environment.

With a floor area of 1,000 sq. meters, the wooden museum is constructed on the site of a former elementary school, generously using abundant forest resources mostly from Hinohara, which is said to be 93% forest. Aiming to be a "hands-on museum" that different generations can enjoy, the museum will offer an opportunity to enjoy the beauty of nature and the culture of Hinohara while having fun. With the introduction of the first "outdoor curators" among the toy museums all over Japan, the museum will teach visitors how it's fun to play in nature.

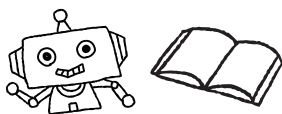
📍 30 min. by bus from Musashi-Itsukaichi Sta. (JR) to get off at "Ozawa" bus stop.

www.hinohara-toymuseum.com/

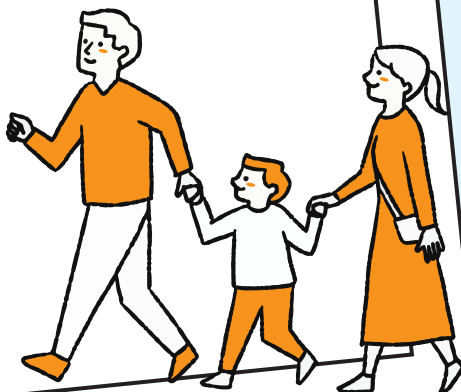


The culture of anime and manga

in Tokyo



As a big producer of popular anime and manga series, Tokyo is filled with attractive spots and things for anime and manga fans. There are lots of fun places related to anime and manga, such as museums and cafes, where you can have fun even if you are not an enthusiastic fan. Here are some spots to learn about Japan's pop culture in several areas in Tokyo.



★ First Avenue Tokyo Station: Tokyo Character Street

More than 30 character shops are underneath Tokyo Station! Various items of popular characters, including Ultraman and Rilakkuma, are available. There are some exclusive goods only available here, such as goods with a design of Tokyo Station.

🚉 Tokyo Sta. (JR, Subway)

www.tokyoeki-1bangai.co.jp/en/?area=area2&floor=b1f



The hub for OTAKU culture Ikebukuro

★ Toshima City Tokiwaso Manga Museum

Tokiwaso was the wooden apartment building that existed from 1952 to 1982, where legendary manga artists such as Tezuka Osamu, Fujiko Fujio (A), and Fujiko.F.Fujio, spent their youth. The original building was demolished, but it was rebuilt and opened as a museum in July 2020. The "manga artists' rooms" show how the tenants lived back in those days. Various events related to manga, such as special exhibitions, are offered.

💰 Fees apply during special exhibitions.

🚉 Ochiai-minami-nagasaki Sta. (Subway), Higashi-Nagasaki Sta. (Seibu)

tokiwasomm.jp/en/



©トキワ荘マンガミュージアム

★ Animate Ikebukuro Flagship Store

This large-scale anime shop sells various anime- and manga-related items, such as character goods and painting tools, from the 1st to 9th floors of the building. Among other places in Ikebukuro, which is one of the most famous anime towns along with Akihabara, this is especially a must-visit spot.

There are six branches of "Animate Cafe" in the Ikebukuro area where you can enjoy original dishes that were created in collaboration with various popular anime and game series. The cafes also offer original goods which are available only at Animate Cafe.

* The cafes may require a reservation by lottery.

(This requirement changes depending on the collaboration series)

🚉 Ikebukuro Sta. (JR, Subway, Seibu, Tobu)

www.animate.co.jp/shop/ikebukuro/



★ Gashapon Department Store Ikebukuro

Opened in February 2021, it is a capsule toy store, which was planned, produced, and operated, by Bandai Namco Amusement. There are as many as 3,000 units of capsule toy vending machines! You can get capsule toys of popular anime and characters.

🚉 Ikebukuro Sta. (JR, Subway, Seibu, Tobu), Higashi-ikebukuro Sta. (Subway)

bandainamco-am.co.jp/others/capsule-toy-store/store/ikebukuro/special/



★ Contemporary Manga Library <Naiki Collection>

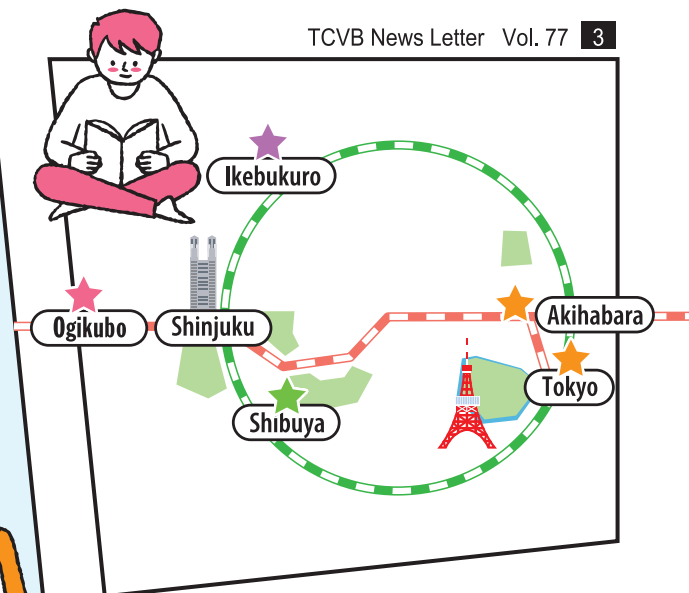
This manga library was moved to Meiji University Surugadai Campus and re-opened in March 2021 after its major renewal. This library has a collection of about 270,000 items, including manga books and related materials, which were collected by the founder, the late Toshio Naiki, for more than 50 years. It is combined with the Yoshihiro Yonezawa Memorial Library of Manga and Subcultures. The exhibition room on the 1st floor is open to the public for free.

¥ For admission to the reading room on the 2nd floor, 330 yen to be a day member (18 years and older), etc.

Browsing fee of 110 yen per closed stack books.

🚶 Ochanomizu Sta. (JR, Subway), Jimbocho Sta. (Subway)

www.sites.google.com/site/naikilib/



Chiyoda-City

Famous for Akihabara but actually an anime town

★ Tokyo Anime Center in DNP PLAZA SHIBUYA

Tokyo Anime Center, jointly run by the Association of Japanese Animations and Dai Nippon Printing Co., Ltd. (DNP), re-opened as a home base for Japanese anime culture in April 2021 after major renovation. Various special exhibitions and events are offered, where you can have a new experience based on the fusion of reality and virtual. There is a store selling original goods and anime goods.

¥ Entrance fees required for special exhibitions.

🚶 Shibuya Sta. (JR, Subway, Tokyu, Keio)

tokyoanimecenter.jp/



★ POMPOMPURIN Café

A character cafe under the theme of "Pompompurin," one of the popular Sanrio characters. The cute interior and dishes with motifs of characters are highly instagrammable! The services are offered by maids from a famous maid cafe, "at-home cafe." The menu includes souffle rice omelet (1,450 yen).

🚶 Harajuku Sta. (JR),
Meijijingumae (Harajuku) Sta. (Subway)

pompompurincafe.com/



© 2021 SANRIO CO., LTD. APPROVAL NO. 5621060

★ CYBERSPACE SHIBUYA in Shibuya PARCO

On the 6th floor of Shibuya PARCO, you can find unique goods shops, such as "Nintendo TOKYO," the first official shop of Nintendo, Pokémon Center Shibuya, and CAPCOM STORE TOKYO, collectively serving as a base for Japanese pop culture.

🚶 Shibuya Sta. (JR, Subway, Tokyu, Keio)

shibuya.parco.jp/



©Nintendo

Shibuya Harajuku

An area with cutting-edge pop culture



★ Tokyo Polytechnic University Suginami Animation Museum

This museum offers an opportunity to learn about Japanese anime in depth, from its history to how to make anime and how actual production takes place on site, while having fun. It also offers various workshops to try for yourself some parts of anime production, such as dubbing. It is free to enter the museum and to watch anime theater movies. Multilanguage audio guide is available for your convenience.

¥ Some workshops require costs for materials.

🚶 Ogikubo Sta. (JR, Subway)

sam.or.jp/english_home

A city with the largest number of anime production companies in Japan

Suginami



Gardens with autumn foliage and cafes

Here are some beautiful gardens with autumn foliage and tea rooms/cafes where you can relax while looking at wonderful colorful leaves.

* Before visiting the facilities below, please check their websites for the latest business information.

🍁 Rikugien Garden

🍵 Fukiage Chaya Tea House

www.tokyo-park.or.jp/park/format/facilities031.html

One of the most famous and beautiful *daimyo* (feudal lord) gardens of the Edo period (1603-1867). With miniature hills and a large pond over a large area, this Japanese garden offers a great place to enjoy beautiful autumn foliage with about 560 Japanese maple trees and others. The best time to enjoy the autumn foliage is usually mid-November to early December. At "Fukiage Chaya" tea house located across the garden pond, you can enjoy a set of *matcha* tea and *wagashi* (Japanese confectionery, 850 yen) while appreciating the beautiful scenery.

¥ 300 yen

🚶 Komagome Sta. (JR, Subway), Sengoku Sta. (Subway)



🍁 Higo-Hosokawa Garden

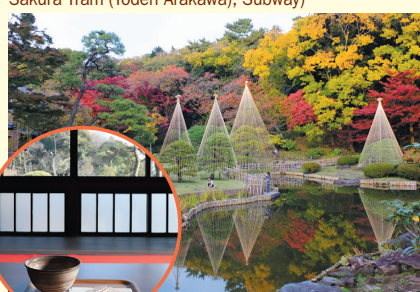
🍵 Cafe Lounge "Tsubaki" at Shoseikaku

www.higo-hosokawa.jp/en/

The area around this garden served as a villa for the Hosokawa clan of the Kumamoto Domain. This garden utilizes the natural landscape of the plateau. From late November to early December, the leaves on the trees around the large pond beautifully turn yellow and red. The Shoseikaku building, which was used as an educational facility for the Hosokawas, is now open to the public as a cafe. It serves a set of *matcha* tea and a recreated confection of the Kumamoto Domain, which was presented a gift to the shogunate government (500 yen).

¥ free

🚶 Edogawabashi Sta. (Subway), Waseda Sta. (Tokyo Sakura Tram (Toden Arakawa), Subway)



🍁 Shinjuku Gyoen National Garden

🍵 Rakuu-tei

www.env.go.jp/garden/shinjukugyoen/english/

Completed as an imperial garden in 1906 and opened to the public in 1949, this park is based on a harmonization of three distinct styles: Formal Garden, Landscape Garden, and Japanese Traditional Garden. The best season for autumn foliage is from mid-November to mid-December. A beautiful tunnel of colored leaves welcomes visitors near Shinjuku Gate. "Rakuu-tei" in the Japanese traditional garden offers a set of *matcha* tea and seasonal *wagashi* (700 yen) in a quaint tea room.

¥ 500 yen

🚶 Shinjuku-gyomae Sta. (Subway)



写真提供: 環境省新宿御苑管理事務所

🍁 Koishikawa Korakuen Garden

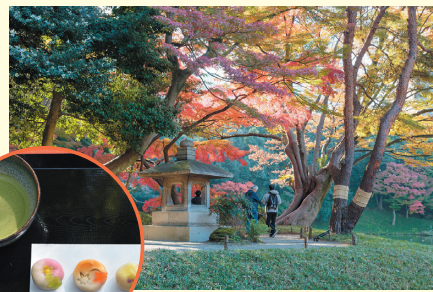
🍵 Aoiya Bidoro-saryo cafe at Kantoku-tei

www.tokyo-park.or.jp/park/format/facilities030.html

As one of Japan's representative gardens, this daimyo garden was created as a garden for the Mito Tokugawa clan. During the best season from later November to early December, about 500 Japanese maple trees turn bright red, creating elegantly attractive scenery throughout. Bidoro-saryo cafe inside the Kantoku-tei building offers food and *matcha* tea to enjoy with a view of the garden. A set of *jo-namagashi* (high-quality Japanese sweets) and *matcha* tea (850 yen) and other items are offered.

¥ 300 yen

🚶 Iidabashi Sta. (JR, Subway), Suidobashi Sta. (JR, Subway), Korakuen Sta. (Subway)



🍁 teamLab Borderless

🍵 EN TEA HOUSE Genka-tei

en-tea-house.teamlab.art/odaiba/

This hands-on museum offers an opportunity to enjoy art variable depending on the time and season of your visit. From September, new artworks will appear, where you can enjoy an autumn view with autumn foliage and other autumn features. At EN TEA HOUSE Genka-tei inside the museum, you can have a curious experience with seasonal flowers blossoming and tea trees sprouting out from the teacup in front of you. The offerings include a set of frozen *gyokuro* tea (green tea ice cream) and a beverage (1,200 yen).

¥ 3,200 yen

🚶 Tokyo Teleport Sta. (Rinkai Line), Aomi Sta. (Yurikamome)



🍁 Omohara Forest

🍵 STARBUCKS Tokyu Plaza Omotesando Harajuku

On the 6th floor of Tokyu Plaza Omotesando Harajuku at Jingumae Crossing in Omotesando, Omohara Forest rooftop terrace is an oasis in the big city, where you can enjoy red leaves of Japanese zelkova trees, the symbol of Omotesando, in autumn. At STARBUCKS facing the terrace, limited dishes available only at a few branches are served. It is also a perfect place to take a break during shopping and sightseeing.

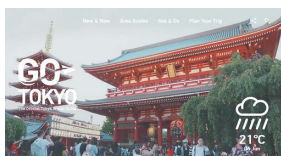
🚶 Meiji-jingumae (Harajuku) Sta. (Subway), Harajuku Sta. (JR), Omote-sando Sta. (Subway)



◆ The Official Tokyo Travel Guide

GO TOKYO

www.gotokyo.org/en/



Editor's note

St. Mary's Cathedral, designed by renowned architect Tange Kenzo, is a building with a wing spread-like appearance when seen from the front, and the structure of the walls forms a large cross when seen from above. Outside light mysteriously shines down inside the cathedral through skylit windows on the high ceiling, and its pipeorgan plays solemn music. Even non-Catholics can hold a wedding ceremony here.

