

IZUOSHIMA GEOPARK MAP

Feel the Breath of the Earth!

Be amazed by the Earth!

Experience the vigour of nature!

Enjoy a Flower Relay ♪

~ The Flower Island of the East Coast ~

Surviving through harsh eruptions and strong sea winds, robust flowers can be seen blooming across the island throughout the entire year.

Spring



Oshima cherry tree

Wild cherry blossoms paint the island white.

Viola mandshurica

These pretty purple flowers are a sign of spring.



Azalea

The highlight of spring, these pink flowers decorate the mountains.

Styrax japonica

A flowery ceiling ▶ Best viewed from below.



Lacocap hydrangeas

The leaves are thick and shiny!

Lilium platyphyllum

These large flowers stand out against the dark lava flows.



Hemerocallis fulva

Orange speckles sway in the sea breeze.

Winter



Camellia japonica

A winter-blooming flower loved by the islanders!

Autumn



Chrysanthemum pacificum

Yellow pompons dance upon silver-lined leaves.

Vitex rotundifolia

A sea of purple by the coast.



Summer

A Geo Station Okata Port

Let's go first when we arrive at Okata Port!

Above the passenger waiting room on the second floor, you can receive information and the latest news from the Izu Oshima Geopark. When arriving at Okata Port, be sure to make use of this information before starting your journey. And, on your way home don't forget to stop by and plan your next trip.

Opening Hours: Open until the last voyage on days that Okata Port is designated as the departure port



1 Akappage (Red Hill)

A red hill that rises from the sea

This hill is the remnants of a volcanic eruption where magma was ejected up into the sky, rapidly falling and accumulating around the volcanic crater. The pieces of magma erupted at high temperatures, and as they came into contact with the air minerals in the magma oxidized and turned red. Over time the volcano was eroded by waves, creating this natural observatory that overlooks the sea.



2 Cape Nagane

Nature's very own "pier"

In 1338, lava erupted from a fissure vent in the mountains, reclaiming the lowland areas of Moto-machi Village as it flowed down into the sea. At the time the land extended roughly 100m further, however the fragile rock was gradually eroded by waves, and as the coastline retreated, this pier-like strip of hardened lava was all that remained.



3 Hamanoyu (Open Air Hot Spring)

Relax with a Volcano ♪

Due to the eruption of 1886, the groundwater in Motomachi District was heated by magma, turning it into a natural hot spring. Hamanoyu is best enjoyed during dusk, where the sea and sky are stained a brilliant red as the sun sinks beyond Izu Peninsula in the West. A local middle school's pool, which utilized the underground water, was also turned into a hot spring!



B Izu Oshima Volcano Museum

Travel the world's volcanoes!

Here you can learn not only about the volcanoes of Izu Oshima, but also those from around Japan and the world. You can also enjoy the impressive 4K theatre which introduces the secrets and beauty of the Izu Oshima Geopark.

Opening Hours: 9am to 5pm, open every day (excluding some unscheduled closures)

Entry Fee: Adults ¥500, Children (Elementary and Middle School) ¥250



4 The Great Road Cut

Like a giant layered cake



Approximately 100 eruptions over 20,000 years formed this beautiful layered structure. This strata was discovered in 1953 when the mountain was excavated in order to build a road. Although it looks like the rock has been folded, each eruption actually moulded to the originally bumpy landscape, creating the wave-like bands in the rock. These stripy rocks tell the story of the island's long and volcanic history.

5 Sanohama Beach

A soft, black beach

This black beach was formed by the accumulation of volcanic ash, volcanic sand, and eroded volcanic rock that was washed down through the valley. The black color absorbs a lot of heat in the summer sun, enough to burn your feet! Every year sea turtles lay their eggs in the sand. Because of the sand's heat it appears that the eggs develop faster than those laid further south.



IZUO



a legend



Toilet



Shrine



Gas Station



Parking



Hot Spring



No vehicles allowed



International Camellia Garden of Excellence



Special Protection Zone in National Park
Izu Oshima Island is designated as part of the "Fuji-Hakone-Izu National Park" and is protected under Nature Park laws. Please enjoy Izu Oshima while protecting the rich nature and precious resources of the island.

The following acts are prohibited under Nature Park laws within Special Protection Zone in National Park.



Use of vehicles



Collection of plants, animals and/or rocks

Publication

Izu Oshima Geopark Promotion Committee

1-1-14 Motomachi, Oshima-machi, Tokyo 100-0101

Tourism Division Geopark Promotion Section

T E L : 04992-2-1446

E-Mail : 010601@town.tokyo-oshima.lg.jp

March 2021



Trekking Izu Oshima!

- Trekking Course -

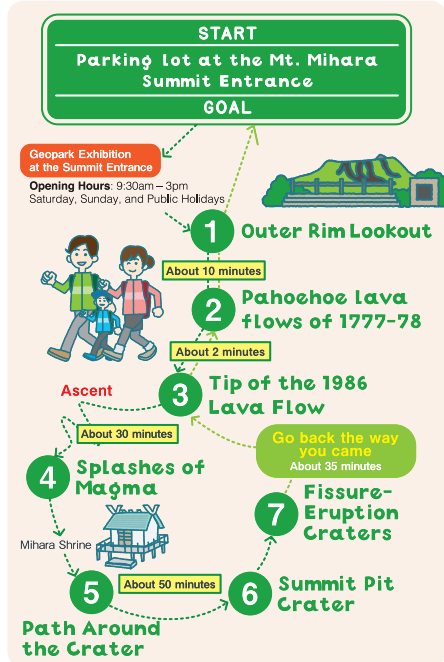
Course
01

Mt. Mihara Crater Path



Average Time
About **2h40min**
With a guide: 3.5 - 4 hours

See the lava flows that poured out from the crater as you climb Mt. Mihara. You can also see the crater itself, as well as neighbouring volcanoes in the distance such as the Izu Islands, Izu Peninsula, and Mt. Fuji. Feel the breath and warmth of the very earth itself.



Course 02 Mt. Mihara and the Ura-Sabaku Desert Full Course



Average Time
About **3h20min**
With a guide: 5 - 6 hours

This full-on course takes you on a walk around the Mt. Mihara summit, stopping by the Ura-Sabaku Desert, and ending at the Oshima Onsen Hotel. Apart from experiencing the Ura-Sabaku Desert, you can also see the strange lava flats formed by the 1986 fissure eruption, and walk through the beautiful green Regeneration Forest. At the end of the trip we recommend washing away your fatigue in the Oshima Onsen Hotel's gorgeous outdoor hot spring.

Caution: The start and end of this course are different.

(A bus runs between both the start and finish location, Oshima Bus: TEL 04992-21822)



Precautions on the Recommended Model Courses

The average time listed does not include rests. It is based on a continuous walking pace. If you would like to take your time viewing the scenery, please prepare more time than listed.

- The courses go through areas with rough footing. Please wear hiking boots or athletic shoes with thick soles to prevent injury to your feet.
- Please do not enter restricted or dangerous areas.
- There is no shade at the summit. To prevent heat stroke please prepare plenty of water, and food or drinks containing electrolytes.
- The weather at the summit can change rapidly, and is often windier than at the base. Please be careful.
- It is dangerous to visit the summit and Ura-Sabaku Desert in strong winds and/or thick fog. Please judge appropriately, and reconsider your trip in bad weather.

IZUOSHIMA Summit Area MAP



Our Recommended Guided Tours!

The Izu Oshima Geo Guides help connect the mysteries behind the landscape in a fun and interesting way!

Izu Oshima Certified Geopark-Guide Tours

Half-day: from ¥5,500 per person
(minimum 2 people per tour) (as of April 2021)

Enquiries Oshima Tourism Association
Tel.04992-2-2177

1 Outer Rim Lookout

Like melted chocolate

This lookout overlooks the landscape formed by Izu Oshima's numerous eruptions. Inside the wide, flat land (caldera) that spreads out before your eyes lies Mt. Mihara, which formed during the Edo Period. The black streaks you can see are lava flows which spilled out in the eruption of 1986.



2 Pahoe-hoe lava flows of 1777-78

Stripy lava?

After walking along the trail for a little while, you can see several little mounds on your right. These are all lava flows (Pahoe-hoe lava flows) formed in the great eruption that occurred during the Edo Period. The viscosity of the lava formed many strange patterns, with some looking like stacks of rope, or steamed buns!



3 Tip of the 1986 Lava Flow

A bumpy lava flow

On November 19, 1986, lava flowed out over the crater edge of Mt. Mihara, running down the slope, and crossing a walking trail before stopping here. The thickness of the lava flow is approximately 5m here, and its bumpy texture is its specialty. If you climb the mountain, look up and image the eruption!



4 Splashes of Magma

How Did This Happen?

Inside the Mt. Mihara crater, layers of magma splashed together and cooled to form a huge block. In the 1986 eruption, a part of this block broke off and was carried approximately 500m away from the crater before stopping here, just before the beginning of the Mt. Mihara descent path.



5 Path Around the Crater

A one-hour panoramic walk!



This crater has a diameter of 300-350m, and a depth of 200m. You can walk around the entire crater in roughly one hour, seeing the beautiful outline of the island against the sea on all sides. In the distance you can also see Mt. Fuji, the Izu Peninsula, Izu Islands, Boso Peninsula and Miura Peninsula.



6 Summit Pit Crater

Magma escapes from this massive crater



Magma from deep within the Earth rises and escapes through this crater. In 1986 the magma escaped the confines of the crater and flowed down the side of the mountain. In the walls of the crater you can see layer upon layer of rock from previous eruptions. In the surrounding area the magma beneath the surface heats water, creating steaming hillsides.





7 Fissure-Eruption Craters

A flaming curtain!



Eruptions don't always occur only from the central crater. In 1986 a "fissure eruption" occurred along the northern slope. Several eruptions spewed from a 1km-long fissure running south-east to north-west, with magma spraying up to 1,500m high!



8 Ura-Sabaku Desert

A black desert



During eruptions, fine grains of cooled lava and ash collected here in this black desert. Due to the strong winds that pass through, plants have not been able to take seed, leading to this large untouched expanse. However, in small pockets of areas protected by the wind you will see plants struggling against the odds.



9 Geo Rock-Garden

Let your imagination run wild

This garden hosts rocks of various shapes and sizes. They collected here in less than a day, originally spit out through the fissure eruption of 1986, where they became broken and deformed as they were carried down the lava flow. What unique shapes and patterns can you see hidden in the rocks?



10 Vegetation Regeneration Trail

Take a walk through time



In this harsh environment, vegetation regeneration begins with pioneer plants. This land, stained black from eruptions, gradually recovers vegetation from grasslands, to sparse tree cover, to a fully grown forest. See this several hundred-year journey of regeneration as you walk along this path.



"Vegetation Regeneration Trail" is divided into two sections, "The Road becoming Forest Someday" and "Sunlight Tunnel in the shade of trees".



11 Akadare (Red Valley)

A bright red gorge

Here a small hill has formed from lava that fell and deposited here from the nearby volcano. The lava was exposed to air at a high temperature, which oxidized the minerals and turned the rock red. Over many many years the hill was eroded, exposing the beautiful red rock, and forming this deep gorge. In the sea on the opposite side of the valley you can see the Izu Islands.



C Geopark Exhibition at the Summit Entrance

Check it out before hiking!

Located right next to the Outer Rim Lookout, this exhibition is on the first floor of the Lookout Refuge Rest Area. You can talk to local guides, and see a video of the 1986 eruption!

Opening Hours: 9:30am – 3pm
Saturday, Sunday, and Public Holidays
Entry Fee: Free!



Izu Oshima is a Young and Active Volcanic Island!

The Izu Oshima Island was formed from submarine eruptions. The island itself is actually an active volcano. Repeated eruptions gradually built the island up until it grew above sea level to what you see today.



Volcanic activity sensors have been installed by the government and universities, and volcanic activity is constantly being monitored by the Bureau of Meteorology. In the case that an imminent eruption is detected, a notification will be announced over the island-wide loud speaker system. Before beginning your trip please check the current volcanic status, and confirm the correct evacuation procedures in the event that an eruption occurs while hiking.



Located by the hiking entrance the "Uta-no-chaya" and Lookout Refuge Rest Area provide a place to view posters about volcanic eruptions, and also offers free rental helmets.

Please Check!



Current Izu Oshima Volcanic Activity
(Japan Meteorological Agency)

