

HANA BIYORI

Map of Hana-Biyori

Admission Fees

| | Adults (middle-school students and older) | Children (from 3-year-olds to primary-school students) |
|------|--|---|
| Fees | 1200 yen | 600 yen |

4015-1 Yanokuchi, Inagi, Tokyo 206-8725

Tel: 044-966-8717

Operating hours: 9:30 a.m. – 5:00 p.m. (admission ends at 4:00 p.m.)

* The closing time varies depending on the season.
For operating hours and closed dates, visit our official website.



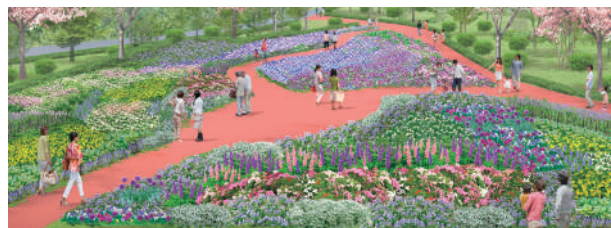
Hana-Biyori



YOMIURILAND

Everyday Is a Good Flower Watching Day The Garden of the Seasons and the Sequoia Garden

Both are outdoor gardens where you can enjoy flowers of the season throughout the year. The Garden of the Seasons is home to 15,000 flowering plants, and the Garden of Sequoias 2,000 of them. Enjoy strolling through these plants.



You can enjoy the flowers of the season anytime of the year!

On Everyday! Flower/Plant Workshop

Why not participate in the workshop on a subject that changes daily but always uses flowers/plants within the park, such as flower arrangements and moss terrarium?



Advanced Bottle Aquarium Course



Fresh Flower Arrangement in Basket Course



Fresh Flower Arrangement in Box Course



Beginners' Moss Terrarium Course

| Fees | How to apply | Capacity |
|---------------|--|--|
| ¥2,000 onward | Apply at shop charm * Applications accepted until capacity is filled. | 10 groups (up to 4 members per group) |

* The times and frequency of the workshop vary from day to day.
Check with Information for the schedule for the day.

A Rich Array of Take-home Gifts!! The Park's Unique Products Including Popular Plants!

Omiyage (take-home gifts) Biyori

Exclusive to this park!
Many items including cute stuffed Asian small-clawed otters!



Otter products available only at Hana-Biyori, from ¥500 upward!!

shop charm

Aquariums featuring natural materials and popular paludarium plants are offered for sale. A full array of products ideal for gifts.



Paludarium plants drawing much attention, from ¥500 upward

See Asian Small-Clawed Otters' Adorable Gestures



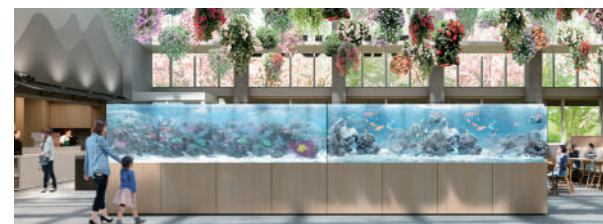
Watch up close Asian small-clawed otters, whose adorable gestures are very popular. Also experience feeding them, as well as a stage performance by them, accompanied by a caretaking staffer's detailed explanation of the animals' ecology in detail.

* Times of the feeding/stage performance vary from season to season.
These programs are subject to cancellation due to the otters' health conditions.

| Feeding Experience | | | Performance by Asian Small-Clawed Otters | |
|--------------------|---------------------------------------|----------------|---|--|
| Fees | Frequency per day | Location | Frequency per day | Location |
| ¥300 per feeding | 3 times (for limited participants) | Otter Biyori ⑨ | 1 time on weekdays 2 times on Saturdays, Sundays and holidays | Mini-Stage ⑫ * Provided indoors when rainy. |

Aquarium x Flowers

An 8-meter long seawater aquarium where colorful fish that swim the seas of Okinawa is located here, along with a 3-meter one housing lushly green water plants. You can see 1,200 fish in some 50 species, including clown fish, butterflyfish and sea goldies.



The floral chandeliers above and across the aquariums add a nice, dreamy feel!

The Japanese Garden Housing Valuable Cultural Treasures



In the Japanese Garden are a sacred gate said to have been relocated from Kyoto Imperial Palace and a Myoken Bodhisattva statue and a Sacred Avalokitesvara statue, both of which are designated as Important Cultural Properties. The Gautama Buddha Hall houses both Buddha's ashes and hair together, making the hall a globally valuable "spiritual site" known only to a few.

Starbucks to Open Shop in Hana-Biyori as First Outlet in Japanese Botanical Garden



Enjoy a most unusual, must-see sight while sipping Starbucks coffee in a space surrounded by flowers and greenery: a huge Starbucks sign made with real, alive plants!

Menu: Starbucks Latte Short ¥340,
Tall ¥380, Grande ¥420, Venti® ¥460;
Chocolate Chunk Scone ¥250;
other

* Prices above are before tax.

Typical Seasonal Flowers at Hana-Biyori

Spring



Cherry blossoms

Azalea

Summer



Hydrangea

Moss

Autumn



Red spider lily

Autumn foliage

Winter



Christmas rose

Plum blossoms

We at Hana-Biyori want it to be the sort of place that encourages us to think about the importance of nature and environmental protection along with its visitors. We will help soothe the visitors' minds through plants, as well as engaging in many proactive programs designed to protect the environment, promote humanity's coexistence with nature and protect and pass the Tama Hills' important nature on to the posterity.

HANA BIYORI

HANA BIYORI

YOMIURILAND

- Smoking area
- Information
- Restroom
- Nursing room
- Wheelchair accessible lavatory
- AED (automated external defibrillator)

Sorami-no-Oka
(Sky-Viewing Hill)

Hana Biyori's Symbol Trees



Palo borracho

Scientific name: Ceiba insignis
Country of origin: Paraguay
Age: Estimated 400 years
Location: Hana Biyori Hall

Named a drunken (barracho) tree (palo) in Spanish, the tree grows naturally in abundance in Latin America.



Semper sequoia

Scientific name: Sequoia sempervirens
Country of origin: Western North America
Age: Approximately 60 years
Height: Approximately 30 meters
Location: Sequoia Garden

The name "sequoia" derives from Sequoyah, a Native American polymath of the Cherokee Nation who invented a Cherokee syllabary in 1821. There are sequoia trees that are nearly 100 meters in the United States.



Hana Biyori Hall

- 7 Omiyage (take-home gifts) Biyori
- 8 shop charm (a plants store)
- 9 Otter Biyori
- 10 STARBUCKS®

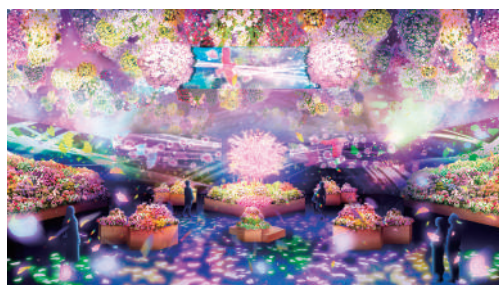
Everyday Is a Good Flower Watching Day! Indoor Flower Gardens That Enchant You Anytime of Year

Besides Flower Chandeliers, or over 300 pots of plants hanging overhead in one of the largest scales of their kind in the Kanto region, the Hana Biyori Hall features flowers covering the floors and a wall flower garden 20 meters long and 2 meters high, providing flowers 360 degrees. Symbolizing Hana Biyori, there is a palo borracho tree in the hall estimated to be over 400 years old.



One of the largest collections of Flower Chandeliers in Kanto

Japan's First Multi-Ending Floral and Digital Art Show!



The entire space turns into the world of floral and digital art, bringing a some 10-minute show filled with surprises!

Free admission

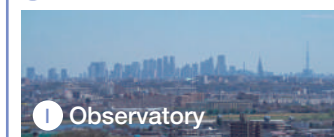
Show frequency
4 times on weekdays
6 times on Sat, Sun & holidays

* Show times change from season to season.
* The show frequency is subject to change.



Sorami-no-Oka (Sky-Viewing Hill)

- 1 Observatory
- 2 Nagame-Ike (Viewing Pond)
- 3 Chikai-no-Izumi (Pledge Fountain)
- 4 Haisenkara-Tachiagaru-Nihon-Zo (Statue of Japan Rising from Defeat)
- 5 Nagame-Bashi (Viewing Bridge)
- 6 Ancient Peruvian Stone Carving

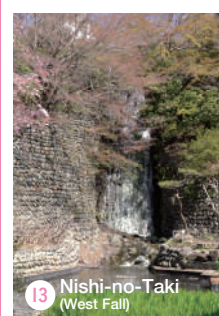


1 Observatory



Irodori-Komichi (Alley of Colors)

- 11 Sequoia Garden
- 12 Mini-Stage
- 13 Nishi-no-Taki (West Fall)
- 14 Nishi-Bashi (West Bridge)
- 15 The Garden of the Seasons
- 16 Higashi-no-Taki (East Fall)



13 Nishi-no-Taki (West Fall)



Sacred Forest

- 17 Cleansing Trough
- 18 Petrified Wood
- 19 Sacred Gate
- 20 Sacred Pond
- 21 Myoken Hall and Myoken Bodhisattva
- 22 Omikuji-Dokoro (Place for Fortune Slips)
- 23 Gautama Buddha Hall (Pagoda)
- 24 Hotoke-Bashi (Buddha Bridge)
- 25 Two-Story Pagoda
- 26 Jizo-Toro (Jizo Lantern)
- 27 Yasoshi-zo (Statues of Eight Buddhism Sect Founders)
- 28 Daizo-Kyoko (Tripitaka Storehouse)



18 Petrified Wood



20 Sacred Pond



25 Two-Story Pagoda

Flower Calendar for the Gardens

| April | May | June | July | August | September | October | November | December | January | February | March |
|---------------------------------|-----------------|-----------|------|------------------|------------------|---------|-----------------------------|----------|---------|-------------------------|-------|
| Cherry blossoms | | Hydrangea | | | | | Cosmea/Celosia cristata | | | Plum blossoms | |
| Azalea/ Rhododendron indicum | | | | Verbena/Marigold | | | | | | Christmas rose/Camellia | |
| | Lupine/Margaret | | | | Orange osmanthus | | Autumn foliage (Maple etc.) | | | | |
| | | | | | Red spider lily | | | | | Snapdragon | |