



Special Edition

\ English /

MINATO CITY

TOKYO



*The town where your
wish comes true*



Take a stroll around Minato City, where the past meets the present, and where the city and nature coexist.

**AKASAKA
AOYAMA**

**ROPPONGI
AZABU**

**DAIBA
SHIBAURA
KONAN**

**SHIMBASHI
SHIBA
TORANOMON**

**TAKANAWA
SHIROKANE**



Welcome to Minato City!

Located in the southeast area of Tokyo, Minato City is a seaside city with Tokyo Bay in the east. It has many highlights and places to enjoy, including Roppongi and Aoyama where trends are created, Daiba with its many entertainment spots, and Takanawa and Shiba with their many historical sites. Minato City is truly a place with so much to offer. Minato City is also home to about half of the embassies in Japan, and is widely recognized as a cosmopolitan city. Enjoy unique experiences in highlight-filled Minato City!

Minato City News & Topics

Convenient transportation in Minato City with the community bus

Check the bus line routes on the map on the right!



○Odaiba Rainbow Bus

The Chii Bus and Odaiba Rainbow Bus

It's easy to travel to several different areas if you use these convenient buses that run along a loop around Minato City! Enjoy sightseeing in Minato City with the Chii Bus, which links to various routes in the city, and the Odaiba Rainbow Bus that connects Shinagawa Station and Daiba.

Fares ▶ Chii Bus 100 yen Odaiba Rainbow Bus 220 yen

Chii bus and Odaiba Rainbow bus Common Unlimited Ride 500 yen

*Can be used on Saturdays, Sundays, national holidays, August 13-15, and December 29-January 3

The common unlimited ride tickets can be purchased on the bus

The surrounding areas are developing more and more due to the creation of the stations!

Takanawa Gateway Station

Convenience stores inside have unstaffed AI-powered payment systems
Image provided by JR EAST



Enhances the convenience of traveling between the popular areas of Roppongi and Toranomon

Toranomon Hills Station



Two appealing new stations completed!

Two stations have been created in 2020 in Minato City. Takanawa Gateway Station opened on the JR Yamanote Line that loops around Central Tokyo. The station's attractive building with an excellent design was spearheaded by world-class architect Kengo Kuma. It is a futuristic station featuring robots with AI. Toranomon Hills Station opened on the Tokyo Metro Hibiya Line. It has further advanced community development in the vicinity and increased the area's appeal for both business and tourism.

Spotlight on Minato City at nighttime

In order for tourists to enjoy deeper experiences for a longer amount of time, Minato City is implementing nightlife tourism. Several initiatives are scheduled, including illuminations of canals and Tokyo Bay, night cruises, and introduction of scenic spots at night.

Enjoy tourism at night!



○Night view from the observatory at Roppongi Hills (→Page 4)

Inquiries 03-3433-7355 (Tokyo Minato City Travel & Tourism Association)

Tokyo 2020 Olympic and Paralympic Games

Starting July 2021!

The long-awaited Tokyo Olympic and Paralympic Games will start in summer 2021. Odaiba Marine Park will be a venue in Minato City, where the marathon swimming and triathlon events will be held. Experience the excitement of this sports festival in Tokyo!



ミライトワ MIRAITOWA © Tokyo 2020



ソメイティ SOMEITY © Tokyo 2020 mascots

URL <https://tokyo2020.org/en/>

Check the MINATO CITY OFFICIAL VISITOR GUIDE

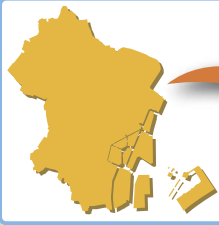
URL <https://visit-minato-city.tokyo/en/>

This is the website of the Tokyo Minato City Travel & Tourism Association that provides various information on tourism, gourmet cuisine, accommodations, and more in Minato City. The blog provides timely information on events and gourmet cuisine.



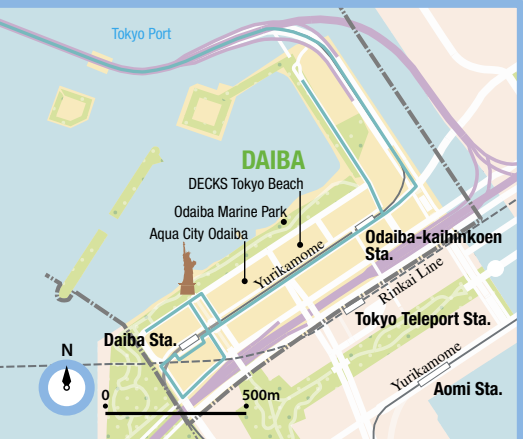
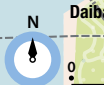
Get seasonal information on your smartphone!

MINATO CITY MAP



Bus service route

- Shiba Route
- Via Plaza Shinmei
- Azabu-East Route
- Azabu-West Route
- Aoyama Route
- Akasaka Route
- Takanawa Route
- Shibaura-Konan Route
- Tamachi Route
- Bus Depot Departure & Arrive
- Odaiba Rainbow Bus



A cosmopolitan area encompassing art and trends

ROPPONGI & AZABU

Area Guide 1

There are many public artworks and galleries, so we recommend dropping by these art spots while enjoying shopping and gourmet cuisine. Relish cute sweets and a fancy dinner during your stroll!

ROPPONGI AREA

Roppongi, where tourists gather from around the world, is a hotspot for Tokyo's seasonal culture, including top-class art and design spaces, trendy shops, gourmet cuisine, and more. It is an area brimming with taste and intelligence where you can enjoy yourself all day.

AZABU AREA

You can feel the history in this area that includes the Azabu-juban Shopping District, lined with venerable shops dating back 100 years or more, and distinguished temples and shrines. Azabu-juban has a lively, bustling atmosphere, while the area around Hiroo has quiet streets filled with greenery.

📍 The Statue of Kimi-chan, located on the patio in the Azabu-juban Shopping District

Enjoy seasonal scenery such as colorful leaves in fall and snowy scenes in winter

Handmade taiyaki from a shop boasting over 100 years of history

🍷 Each taiyaki - 180 yen



Naniwaya Souhonten

☎ 03-3583-4975

Since its founding in 1909, this shop has retained its *icchoyaki* method of making *taiyaki* by hand and cooking one at a time. The *taiyaki* have a crisp, refined, thin shell filled with adzuki bean jam that is just the right sweetness. You can enjoy *yakisoba* and *shiruko* sweet red-bean soup in the café on the 2nd floor.

📍 1-8-14 Azabu-juban, Minato-ku 🚶 Close to Exit 7 of Azabu-juban subway station 🕒 11 a.m.-7 p.m. 🗓 Tuesdays, third Wednesday of each month 🅇 None



15 minute walk

Arisugawa-no-miya Memorial Park

☎ 03-3441-9642 (Administrative office)

This elegant, quiet park filled with greenery was built around a hill that makes good use of the terrain of the Azabu plateau. It was the villa of Nambu Minonokami from the Morioka domain during the Edo period, became a residence for the Arisugawa-no-miya branch of the Imperial Household, and was donated for public use in 1934.

📍 5-7-29 Minami-azabu, Minato-ku 🚶 3 minute walk from Exit 1 of Hiroo subway station 🅇 Free admission 🅇 None

🗿 Statue of Imperial Prince Arisugawa-no-miya Taruhito on a horse



🍷 A toasty aroma wafts from the storefront

🗿 The vestiges of the feudal lord's park still remain today



🌊 A beautiful stream flows inside the park

Roppongi Hills

12 minute walk

☎ 03-6406-6000 (General information)

This Roppongi landmark is home to over 200 restaurants and shops, museums, an observatory, cinemas, a park, a hotel, and more. It's full of highlights, such as the 360-degree glass observation deck called Tokyo City View as well as public art.

🗿 Mohri Garden, TV Asahi, and other locations surround the 238 meter-tall Mori Tower

📍 6-10-1 Roppongi, Minato-ku, and more 🚶 Directly connected to Exit 1C of Roppongi subway station 🕒 Shops 11 a.m.-9 p.m., restaurants open until 11 p.m., some facilities have different hours 🅇 None 🅇 2,762 spaces (paid parking)



View art until late into the night at Roppongi Hills

Mori Art Museum

☎ 03-5777-8600 (ITT Hello Dial Service)

An international contemporary art museum that holds diverse exhibitions featuring unique perspectives on art, architecture, design, and more. The museum is open every day until late at night when exhibitions are being held, so you can visit at a time that suits you.

📍 Roppongi Hills Mori Tower 53F 🚶 Directly connected to Exit 1C of Roppongi subway station 🕒 Changes depending on the exhibition 🕒 10 a.m.-10 p.m., until 5 p.m. on Tuesdays. Last entry 30 minutes before closing 🅇 None during exhibitions, closed when exhibitions are changed 🅇 Use the 2,762-space parking lot at Roppongi Hills (paid parking)

🖼 Central atrium Image provided by Mori Art Museum

🌃 Enjoy the beautiful nightscape from Tokyo City View, the observatory on the 52nd floor of Roppongi Hills Mori Tower



A cultural city that stimulates creativity, where you can see, play and learn

🗿 Mohri Garden, a famous location for cherry blossoms

U

10
minute
walk

ROPPONGI
4

The National Art Center, Tokyo

☎ 047-316-2772 (Hello Dial)

The National Art Center, Tokyo has one of Japan's largest exhibition spaces (14,000 m²). It is a new kind of art museum that holds a variety of exhibitions while publicizing art and providing art-related information, all without housing a permanent collection.

6 minute
walk



📍The museum also has a restaurant, 3 cafés, and a museum shop

- 📍7-22-2 Roppongi, Minato-ku
- 🚶 Directly connected to Exit 6 of Nogizaka subway station
- 🕒 Changes depending on the exhibition ⌚ 10 a.m.-6 p.m., last entry 30 minutes before closing
- 📅 *Depends on the exhibition
- 🗓️ Tuesdays (closed the following weekday if Tuesday is a national holiday) 📄 None

A new art museum that also has a role as an art center



📍The National Art Center, Tokyo

👉 The unique architecture designed by Kisho Kurokawa is a must-see

Experience Tokyo's culture through art and shopping



📍Main shopping area Galleria

ROPPONGI
5

TOKYO MIDTOWN

☎ 03-3475-3100

This complex, built on the former site of the Japan Defense Agency, includes cultural facilities like art galleries, 130 shops and restaurants, a hotel, and more. Also appealing are its green spaces, including Midtown Garden where you can lie on the grass.

- 📍9-7-1 Akasaka, Minato-ku
- 🚶 Directly connected to Exit 8 of Roppongi subway station
- 🕒 Shops 11 a.m.-9 p.m., restaurants 11 a.m.-12 a.m. 📄 None
- 📅 About 380 spaces (paid parking)

Nearby

ROPPONGI
6

Billboard Live TOKYO

☎ 03-3405-1133

A music venue & restaurant featuring performances by top-class artists from Japan and around the world. The auditorium is split into three levels. You can see the night view behind the stage when the curtains are opened up. Enjoy sublime performances here.

- 📍Tokyo Midtown Garden Terrace 4F, 9-7-4 Akasaka, Minato-ku
- 🚶 Directly connected to Exit 8 of Roppongi subway station
- 🕒 5:30 p.m.-11 p.m. (3:30 p.m.-9 p.m. on Saturdays, Sundays, and national holidays) *Depends on the performance 📄 Not fixed 📅 About 380 spaces (paid parking)



👉 Enjoy food and drink made by outstanding chefs

👉 See the beautiful night view beyond the stage

Hot spot



Play with mischievous and cute hedgehogs

ROPPONGI

Hedgehog café HARRY ROPPONGI

☎ 03-3404-8100

This café gives you the chance to play with hedgehogs, and is popular with international tourists. You can watch, hold, and feed the hedgehogs with the specified food.

- 📍IWAHORI Building 2F, 6-7-2 Roppongi, Minato-ku
- 🚶 Close to Exit 3 of Roppongi subway station
- 🕒 1,430 yen entry fee for 30 minutes
- 🕒 11 a.m.-7 p.m. 📄 None 📄 None

Dotted with art spots!

Tokyo Midtown is home to many fascinating artworks. You'll definitely want to check out the Suntory Museum of Art with its exhibitions centered on Japanese art and 21_21 DESIGN SIGHT, which holds exhibitions with the theme of "everyday life"!



📍Artworks are placed in Midtown Garden

Become intoxicated by the music from live performances by top artists



A seaside area with an open feeling

DAIBA & SHIBAURA & KONAN

Area Guide 2

The Odaiba area is filled with entertainment spots that serve as its main sightseeing attractions. Bask in the waterfront scenery with Tokyo Bay, canals, and more nestled among the big city buildings.

Daiba AREA

This area began when it was built as a *daiba* (a maritime artillery battery) to protect Edo (the old name for Tokyo) following the arrival of Admiral Perry's ships from the United States during the Edo period. Later, it was developed as a part of the Tokyo Waterfront City.

SHIBAURA AREA

Shibaaura, which was mostly underwater during the Edo period, was created with reclaimed land from the end of the Meiji period to the early Showa period. Since then, it has been developed into a coastal warehouse district, and its skyscrapers have been increasing in recent years.

KONAN AREA

Built on reclaimed land at the same time as Shibaaura, this bay area extends around the south side of Shinagawa Station. It became one of Tokyo's leading business districts due to the Tokaido Shinkansen stopping at Shinagawa Station.

② The Statue of Liberty, the symbol of Odaiba, was built to commemorate the friendly relations between Japan and France

Walk across the symbol of Tokyo Bay!



④ Illuminated at night

② Rainbow Bridge

☎ 03-5463-0223 (Port Road Management Division, Tokyo Port Management Office)

This suspension bridge links downtown Tokyo with the Waterfront City. Its two-level construction has the Route 11 Shuto Expressway Daiba Line on the upper level, while the lower level has a local road, the Yurikamome Line, and a 1.7 km promenade (a 20-30 minute walk).

- ① Shibaaura to Daiba in Minato-ku ② 5 minute walk from Yurikamome Shibaaura-futo Station to the Shibaaura-side promenade entrance
- ③ Free ④ 9 a.m.-9 p.m. (10 a.m.-6 p.m. in November-March, last entry 30 minutes before closing) ⑤ Every third Monday of the month (closed the following day when Monday is a national holiday) ⑥ None

Right across the bridge

20 minute walk

Minato City Center for Traditional Culture

☎ 03-3455-8451

The only wooden geisha assignments office building in Tokyo was renovated into a place for passing down the history of Designated Cultural Assets in Minato City. Events related to traditional culture and more are scheduled to be held in the Exchange room known as the *Hyakujojiki* hundred tatami mat room.

- ① 1-11-15 Shibaaura, Minato-ku ② 8 minute walk from the East Exit of JR Tamachi Station ③ Free entry (separate charges depending on the event) ④ 10 a.m.-9 p.m.
- ⑤ December 29-January 3 (some other temporary closures) ⑥ None

Come into contact with Japanese culture, in a building formerly used as a geisha assignments office



④ Holds traditional culture-related lectures as well as *rakugo* storytelling and other performances

Dive into the sea from Odaiba City!
Sightseeing in Odaiba by amphibious bus

② A custom-made vehicle combining a sightseeing bus and a boat. It is 3.8 meters high.



③ TOKYO NO KABA

☎ 03-3455-2211 (Hours: 9 a.m.-5 p.m.)

This is a new sensation for Tokyo Bay sightseeing. The custom-made amphibious bus drives around Odaiba and dives into the sea, then cruises Tokyo Bay. The attendant's guidance and high-quality 3D sound background music make the journey more thrilling.

- ① Aqua City Odaiba entranceway (pier) 1F, 1-7-1 Daiba, Minato-ku ② 5 minute walk from Yurikamome Daiba Station
- ③ 3,600 yen ④ Departures from 10 a.m.-5:15 p.m., 4-7 trips/day (4-6 trips/day in October-March, last trip departs at 4:15 p.m.)
- *The number of trips varies depending on whether it is a weekday or holiday ⑤ Wednesdays (closed the following weekday if Wednesday is a national holiday), suspended during stormy weather ⑥ Use parking lots nearby. *Sightseeing route may be changed during the Tokyo Olympic and Paralympic Games

Come take a ride with us!



② Travel around Odaiba's famous sites with lively staff

⑥

② Sweeping view of Minato City from Tokyo Bay

AN

Filled with indoor entertainment spots that you can enjoy all day



④ The exterior has a ship motif befitting a seaside area



⑤ The shopping mall features plenty of outdoor brands and more

DAIBA
4 DECKS Tokyo Beach

☎ 03-3599-6500

Connected to Odaiba Marine Park by a wooden deck. In addition to restaurants and shops, it also has theme parks such as Legoland Discovery Center Tokyo and Madame Tussauds Tokyo.

② 1-6-1 Daiba, Minato-ku ③ 2 minute walk from Yurikamome Odaiba-kaihinkoen Station ④ 11 a.m.-9 p.m. *Some facilities have different hours. *Check the official website for the latest information ⑤ Not fixed ⑥ 550 spaces (paid parking)

The perfectly thrilling attractions are captivating

Tokyo Joypolis

☎ 03-5500-1801

Enjoy over 20 kinds of attractions, including rides, horror attractions, and a shooting game using the latest virtual reality technology, at Japan's largest indoor amusement park.

② Same as DECKS Tokyo Beach ③ Admission 800 yen, passport 4,500 yen ④ 10 a.m.-10 p.m. (last entry 9:15 p.m.) ⑤ Not fixed (closed on same dates as DECKS Tokyo Beach) ⑥ Use the 550-space parking lot at DECKS Tokyo Beach (paid parking)



④ Halfpipe Tokyo is the most popular attraction

An enormous shopping center with the waterfront's best food selection



④ All kinds of popular fast food at the 1st floor food court



④ A good location between the famous spots in Odaiba

DAIBA
5 Aqua City Odaiba

☎ 03-3599-4700

Features large-scale stores of sports brands and casual fashion brands. It is also home to about 60 restaurants and cafés, a United Cinemas, and Tokyo Ramen Kokugikan Mai (→P15).

② 1-7-1 Daiba, Minato-ku ③ Close to Yurikamome Daiba Station ④ 11 a.m.-9 p.m. (restaurants are open until 11 p.m., United Cinemas is open from 10 a.m. to the end of the last screening) *Some facilities have different hours ⑤ Not fixed ⑥ 900 spaces (paid parking)

A short walk

A short walk

2 minute walk

DAIBA
6 Fuji Television

☎ 03-5531-1111

The Fuji Television headquarters has become a landmark in Odaiba with its iconic futuristic building. You can enjoy collecting stamps for the stamp rally while walking around the building, at locations including the Fuji TV Mall (1st floor), the Hachitama Spherical Observation Room (25th floor), and others.

② 2-4-8 Daiba, Minato-ku ③ 5 minute walk from Tokyo Teleport Station on the Rinkai Line ④ 700 yen entrance fee for Hachitama (450 yen for children under 15) ⑤ ⑥ Depends on the facility *May change due to events ⑦ None



④ The Fuji TV Mall has many facilities, such as the Sazae-san shop

A fun TV station where you can visit the observation room and character goods shops



④ The Hachitama observation room offers breathtaking views from about 100 meters above ground

④ The building was one of the masterpieces designed by architect Kenzo Tange in his later years

Where history coexists with the cutting edge

AKASAKA & AOYAMA

Area Guide 3



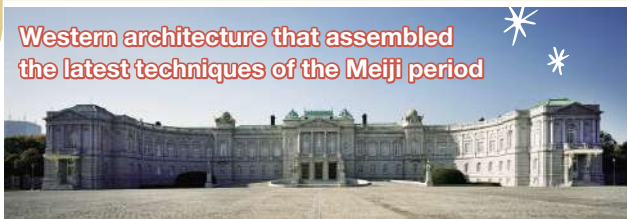
📍 Aoyama Cemetery, Japan's first public cemetery

Start at a landmark in the entertainment district of Akasaka. From Akasaka, climb up the hill along Aoyama-dori Avenue and take a stroll under the tree-lined Gaienmae Ginkgo Avenue. Then, visit the art galleries and chic shops in Aoyama.

AKASAKA AREA

Adjacent to Nagatacho, Akasaka has flourished as a business district and geisha entertainment district lined with traditional Japanese *ryotei* restaurants. The area is dotted with historic landmarks, including Akasaka Hikawa Shrine, a place connected with *Chushingura* (the name given to fictionalized accounts of the incident involving the 47 *ronin*), and the former site of the residence of Katsu Kaishu. The area around Akasaka Station is a famous cherry blossom viewing spot.

Western architecture that assembled the latest techniques of the Meiji period



📍 A place to welcome royal families and country leaders from around the world

2 State Guest House, Akasaka Palace

☎ 03-5728-7788

Built in 1909 as the Crown Prince's palace. The neo baroque style palace is exemplary of the architecture, arts, and technologies of the time in Japan. Following renovation in 2009, it was designated as a National Treasure.

- 📍 2-1-1 Moto-akasaka, Minato-ku
- 🚶 7 minute walk from the Akasaka Exit of JR Yotsuya Station and Exit 1 of Yotsuya subway station
- 💰 1,500 yen for the main building and garden, etc. 🕒 10 a.m.-5 p.m. *Opening times of each area vary *No reservation required (except for the Japanese-style annex). *Check the website for closures on Wednesdays or for receptions, etc.
- 🚫 None



📍 The Kacho no Ma (Hall of Flowers and Birds), where formal banquets are held

7 minute walk

A historic building located in a vast garden



📍 A meticulously-maintained garden that stretches across 3,300 square meters

3 Meiji Kinenkan

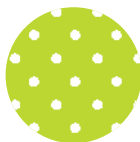
☎ 03-3403-1171

The main building, which was built in 1881 as the dining hall of the Akasaka Temporary Palace, was recognized as a Tokyo Metropolitan Government designated Tangible Cultural Property in 2020. For casual dining, you can visit the café facing the garden on the first floor of the main building.

- 📍 2-2-23 Moto-akasaka, Minato-ku
- 🚶 3 minute walk from JR Shinanomachi Station, 6 minute walk from Exit 2 of Aoyama-itchoe subway station
- 🕒 11:30 a.m.-10 p.m. *Restaurant opening times vary 🚫 None *Closed for renovations from February to June 15, 2021 🚗 160 spaces



📍 There are also restaurants serving Japanese food and more



6 minute walk

5 minutes by car

A complex centered around a TV station with many things to enjoy

1 Akasaka Sacas

📍 Different for each facility

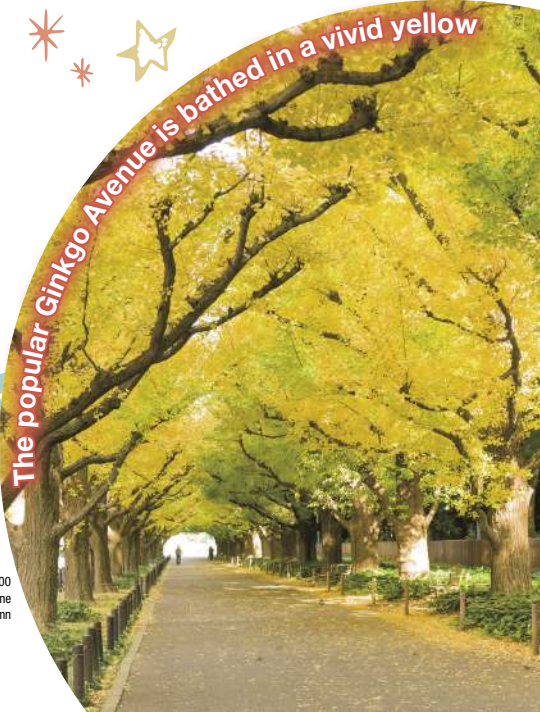
Centered around the TBS Broadcasting Center and Sacas Square at its entrance are the TBS Akasaka ACT Theater and Akasaka Biz Tower SHOPS & DINING.

- 📍 5-3 Akasaka, Minato-ku 🚶 Directly connected to the exits of Akasaka subway station (exits differ depending on the facility) 🕒 The main facility is always open, store opening times vary 🚫 None
- 🚗 Use the 83-space parking lot at Akasaka Biz Tower SHOPS & DINING (paid parking)



📍 Sacas Square also has food trucks

The popular Ginkgo Avenue is bathed in a vivid yellow



📍 Stretching for about 300 meters, Ginkgo Avenue is one of the best spots to see autumn colors in Tokyo

Experience Japanese culture with the tea ceremony and flower arrangement



10 minute walk

In addition to the tea ceremony experience, it is also possible to experience Ikebana traditional flower arrangement

A private art museum with a collection of numerous pre-modern works from Japan and East Asia



Located in a quiet area of Aoyama

AOYAMA 6

Nezu Museum

☎ 03-3400-2536

This museum has a collection of about 7,400 pre-modern artworks acquired by the businessman Nezu Kaichirō, Sr. The extensive collection starts from Chinese bronzeware from the 13th century B. C. all the way to paintings and crafts from the Edo period, including numerous National Treasures and Important Cultural Properties.

*Timed-entry online reservation required as of November 2020

📍 6-5-1 Minami-aoyama, Minato-ku 🕒 8 minute walk from Exit A5 of Omotesando subway station 🎫 Special Exhibitions 1,500 yen, Museum Collection Exhibitions 1,300 yen 🕒 10 a.m.-5 p.m. (entry until 4:30 p.m.) 🗄 Mondays (closed the following day when Monday is a national holiday), when exhibitions are changed 📺 9 spaces



The Konintei teahouse was built elsewhere in the early Taisho period and moved here

AOYAMA 5

Japanese Cultural Experience WANOCOTO

☎ 03-5772-6663

At this studio, you can experience Japanese culture including tea ceremony with over 500 years of history. Discover the spirit of Zen by watching the delicate *tenmei* hand movements used for making tea by the instructor. Afterwards, savor a seasonal Japanese sweet while enjoying your tea. Reserve via the website at least two weeks prior to your visit.

📍 Chuo-Coffee Headquarters Building 2F, 3-5-9 Kita-aoyama, Minato-ku 🕒 3 minute walk from Exit A3 of Omotesando subway station 🎫 3,300 yen for the tea ceremony experience (price per person, held for two people), 3,300 yen for the Ikebana flower arrangement experience + 1,540 yen flower fee (price per person, held for two people) 🕒 Tea ceremony at 4-5 p.m. on Tuesdays, Ikebana flower arrangement from 1:30 and 3:30 p.m. on Wednesdays 🗄 Mondays, Thursdays-Sundays 📺 None

15 minute walk

AOYAMA 4

Meiji Jingu Gaien Ginkgo Avenue

☎ 03-3401-0312 (Meiji Jingu Gaien)

This tree-lined avenue stretches from Aoyama-dori Avenue to the Meiji Memorial Picture Gallery. The ginkgo leaves typically turn yellow from mid-November to early December, when the fallen leaves cover the avenue.

📍 2 Kita-aoyama, Minato-ku 🕒 2 minute walk from Exit 1 of Aoyama-itchome subway station 🎫 Free to stroll 📺 Use the 132-space parking lot at Meiji Jingu Gaien Aoyama (paid parking)



3 minute walk

AOYAMA 7

Taro Okamoto Memorial Museum

☎ 03-3406-0801

Exemplary Japanese artist Taro Okamoto's combined studio and home has been opened to the public. The studio, where many of his famous works were created, has been kept exactly as it was when he lived and worked there. The building itself was designed by Junzo Sakakura.

Japan's best shopping destination

Omotesando and Takagicho-dori Street, lined with stores from leading brands, make up Japan's most fashionable area. The backstreets are also dotted with chic shops. Come and shop at the place where trends in Japan get started!

📍 6-1-19 Minami-aoyama, Minato-ku 🕒 8 minute walk from Exit A5 of Omotesando subway station 🎫 650 yen admission fee 🕒 10 a.m.-6 p.m. (entry until 5:30 p.m.) 🗄 Tuesdays (open if it is a national holiday) 📺 None

A creative space filled with Okamoto's energy



You can find many of Okamoto's works here, such as in the salon

It seems as though art is still being created in the studio

Dotted with historic spots

SHIMBASHI & SHIBA & TORANO



The Noppon Brothers, the official mascot characters of Tokyo Tower, and ambassadors for tourism in Minato City

Area Guide **A**

Many places related to the Tokugawa Shogunate Family remain in this area. Take a stroll and discover the charm of Edo (the old name for Tokyo), from a garden on the former site of a feudal lord's mansion, to shrines and temples frequented by commoners, and more. Then relish an exquisite gourmet meal after your stroll!

SHIMBASHI AREA

The birthplace of Japanese railroads, this business district extends between Marunouchi and Shinagawa. It is always changing as large-scale redevelopments take place such as in Shiodome. There are also countless enticing restaurants nestled in the lively and traditional shopping streets.

SHIBA AREA

This area developed as a temple town of Zojoji Temple. Its appeal lies in its natural environment, where you can enjoy the changing scenery of the four seasons. Tokyo Tower soars before your eyes, and this scenic point symbolizes the Shiba area.

TORANOMON AREA

It is said that the area's name derives from the gate (*mon*) west of Edo Castle. Along with Shimbashi, it is a typical Japanese office district. The area has been transformed into a cosmopolitan city due to the opening of Toranomon Hills.



② Tokyo Tower, a landmark of Tokyo

1 Tokyo Tower

☎ 03-3433-5111

Opened in 1958, this radio wave tower is 333 meters high. It has two observatories: the 150-meter high Main Deck and the 250-meter high Top Deck. You can climb the open-air staircase up to the Main Deck (11 a.m.-4 p.m. on Saturdays, Sundays, and holidays only *Subject to change. Please check the website.)

④ 4-2-8 Shibakoen, Minato-ku ⑤ 5 minute walk from the Akabanebashi Exit of Akabanebashi subway station, 7 minute walk from Exit 1 of Kamiyacho subway station ⑥ 1,200 yen admission fee for the Main Deck ⑦ 9 a.m.-11 p.m. (last entry 10:30 p.m.) ⑧ None ⑨ 200 spaces (paid parking)

Join the Top Deck Tour

The Top Deck has a futuristic decor with geometric mirrors and LED lights. Only the Top Deck Tour allows you entry to this restricted area. Join from the dedicated lane on the 1st floor of Foot Town.

⑩ Same-day admission 3,000 yen, advance-purchase admission 2,800 yen ⑪ Tour is held every 15 minutes from 9 a.m.-10:15 p.m. (Top Deck closes at 10:45 p.m.)

Reservation method Make a reservation via the Top Deck Tour reservations page of the official Tokyo Tower website. On the day of your visit, show staff the QR code generated for your booking (either on your mobile device or printed) and go directly to the Top Deck lane.



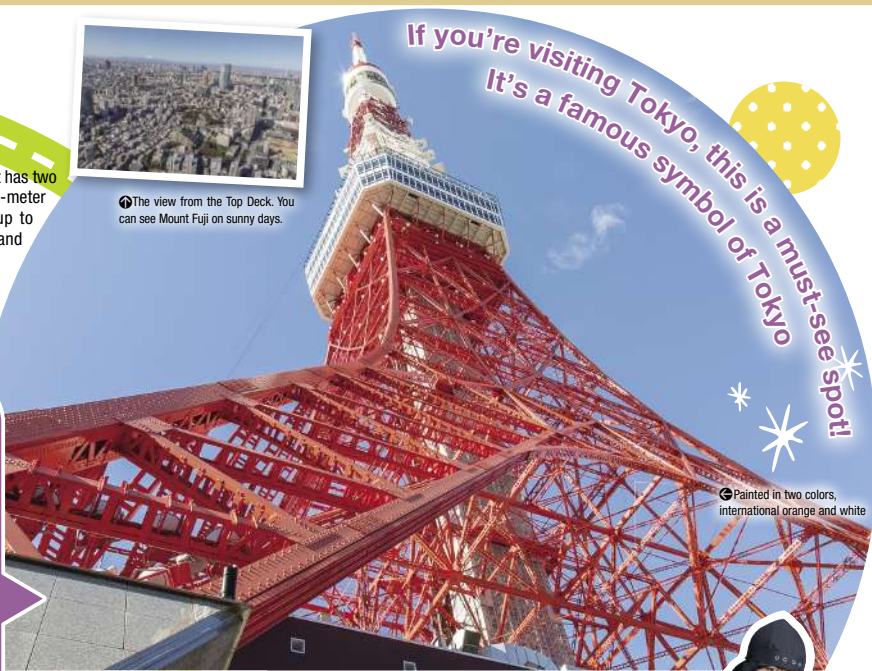
⑫ First, pick up the audio guide at the Top Deck lane



⑬ There's even a free drink when you change elevators



⑭ The view from the Top Deck. You can see Mount Fuji on sunny days.



If you're visiting Tokyo, this is a must-see spot!
It's a famous symbol of Tokyo

⑮ Painted in two colors, international orange and white



⑯ Tekko-kagi (hand claw)

⑰ Shuriken (throwing star)

Watch and learn the techniques of the descendants of ninja, then try them yourself!



⑱ Sasuke-sensei, the instructor

2 Musashi Ninja Clan Shinobi-Samurai Honjin Dojo

☎ 090-3691-8165

The Musashi Clan inherited the martial arts of the "shinobi" (ninja) and the "samurai," along with their arts and public entertainment. Going to the dojo is like entering a different world, with its range of shinobi weapons and equipment. This is the perfect place to experience ninja techniques and the spirit of Japan.

⑲ Kikai Shinko Kaikan Building B4F, 3-5-8 Shibakoen, Minato-ku ⑳ 8 minute walk from Exit 1 of Kamiyacho subway station and Exit A1 of Onarimon subway station ㉑ Varies depending on the program *Reservation by phone or email required ㉒ 10 a.m.-6 p.m. (from 3:30 p.m. on Saturdays) ㉓ None ㉔ None

㉕ The authentic ninja weaponry and equipment are fascinating!



10

MON

Drop by here

4 minute walk

SHIBA 3 **Zojoji Temple**



The magnificent Mausoleum of Tokugawa Shogun

☎ 03-3432-1431

Zojoji is one of the seven head temples of the Jodo shu (Pure Land sect) of Buddhism and has 600 years of history. It is known as a family temple of the Tokugawa Clan, and includes a mausoleum where Tokugawa shogun were laid to rest, as well as the Black Image of Amida Buddha, which was deeply worshiped by Tokugawa Ieyasu, in the Ankokuden building.

📍 4-7-35 Shibakoen, Minato-ku
 🚶 3 minute walk from Exit A1 of Onarimon subway station and Exit A4 of Shibakoen subway station, 5 minute walk from Exit A6 of Daimon subway station
 🆓 Free entry (500 yen fee for the Tokugawa Mausoleum, and 700 yen for the Treasure Gallery)
 🕒 Tokugawa Mausoleum and Treasure Gallery are closed on Tuesdays
 🚫 None




📍 Daiden, the largest temple hall in Tokyo
 *Under construction until October 2021. Open to visitors

Relax in the beautiful garden and enjoy the pond and greenery

SHIBA

Kyu-Shiba-rikyu Gardens

📞 03-3434-4029



📷 Photograph of the pond from Oyama, the highest hill in the garden

This is a feudal lord garden from the early Edo period. It is a circuit-style garden centered around a pond, and has been designated as a national Place of Scenic Beauty. The colored leaves are a feast for the eyes in autumn.

📍 1-4-1 Kaigan, Minato-ku
 🚶 Close to the North Exit of JR Hamamatsucho Station and Exit B2 of Daimon subway station
 🆓 150 yen
 🕒 9 a.m.-5 p.m.
 🚫 None
 🚫 None

Experience the history of the birthplace of Japanese railways and Shiodome's history



📍 The Shimbashi-Teishajo station building has been rebuilt in the same location as when it first opened

SHIMBASHI 5 **Railway History Exhibition Hall - Old Shimbashi Station**

☎ 03-3572-1872



📷 The permanent exhibition displays objects such as the foundation stone used in the original station

The station façade of Japan's first railway terminal, which opened in 1872, has been faithfully reproduced. The building houses a permanent exhibition of artifacts and relics discovered during its excavation. Special exhibitions are held several times per year, with themes relating to the history of the railways and the local history of the Shiodome neighborhood.

📍 1-5-3 Higashi-shimbashi, Minato-ku
 🚶 3 minute walk from the Shimbashi Exit of Shiodome subway station and Exit 2 of Shimbashi subway station
 🆓 Free entry
 🕒 10 a.m.-5 p.m.
 🕒 Mondays (closed the following day when Monday is a national holiday), when exhibitions are changed
 🚫 None

8 minutes by car



You can also enjoy luxurious hotels and shops

TORANOMON 4 **Toranomon Hills Mori Tower**

This 52-story skyscraper has a relaxing, comfortable atmosphere, and includes a vast lawn known as Oval Square, and restaurants in the atrium where you can enjoy a wide variety of food.

📍 1-23-1 Toranomon, Minato-ku
 🚶 Directly connected to Toranomon Hills subway station
 🍽 Restaurants 11 a.m.-11 p.m. (shops close at 9 p.m.)
 🚫 Not fixed
 📍 155 spaces (paid parking)

📷 The public art is also a must-see

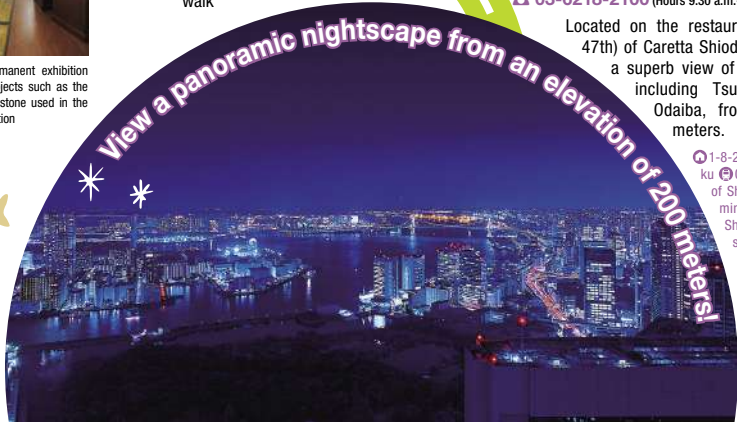
SHIMBASHI 6 **Sky View, the free observation space at Caretta Shiodome**

☎ 03-6218-2100 (Hours 9:30 a.m.-6 p.m.)

Located on the restaurant floors (46th and 47th) of Caretta Shiodome, Sky View offers a superb view of the Tokyo Bay area, including Tsukiji, Kachidoki, and Odaiba, from a height of 200 meters.

📍 1-8-2 Higashi-shimbashi, Minato-ku
 🚶 Close to the Shimbashi Exit of Shiodome subway station, 3 minute walk from the JR and Shiodome Exits of Shimbashi subway station
 🆓 Free
 🕒 11 a.m.-11 p.m.
 🚫 None
 📍 60 spaces (paid parking)

📷 A popular spot with a sweeping view of Tokyo's famous places



6 minute walk

Refined areas of protected greenery and historic landmarks

TAKANAWA & SHIROKANE

Area Guide 6

Start from the cultural institutions located in the verdant Shirokane area. Enjoy lunch and a coffee break at one of the many fine restaurants and cafés in this upmarket area. The Takanawa area is very hilly, so be sure to allow plenty of time for traveling around.

TAKANAWA AREA

The name of this deeply historic area appeared as Takanawahara in records from the Warring States period (late 15th century to late 16th century). It is notable for its many historic landmarks, including the vestiges of a feudal lord's residence. Sengakuji Temple is also found here. The temple is known for appearing in *Chushingura* (The Treasury of Loyal Retainers).

SHIROKANE AREA

It is said that the name Shirokane, meaning white metal or silver, derives from the large quantities of silver in the possession of Yagishita Kazusanosuke, who established this area during the Muromachi period (1336-1573). The area's main street is the stylish, ginkgo tree-lined Platinum Street.



④ Yukashi-no-Mori, where the Minato City Local History Museum is located

SHIROKANE
1

Institute for Nature Study, National Museum of Nature and Science

☎ 03-3441-7176

This forestland has endured for thousands of years to pass on the nature of the Shirokane plateau, created 200-500 thousand years ago, to current and future generations. In addition to deciduous and evergreen trees are vibrant flowers that grow thickly at the water's edge. You can also find a variety of insects here.

⑤ 5-21-5 Shirokanedai, Minato-ku ⑥ 7 minute walk from Exit 1 of Shirokanedai subway station, 9 minute walk from the East Exit of JR Meguro Station and the Main Exit of Tokyo Meguro Station ⑦ 320 yen ⑧ 9 a.m.-4:30 p.m. (until 5 p.m. in May-August, last entry 4 p.m. year-round) ⑨ Mondays (closed the following day when Monday is a national holiday) ⑩ None



④ A vital natural area in the Central Tokyo, surrounded by buildings on all sides

4 minute walk

Observe nature in a big-city oasis where abundant greenery is protected



④ The greenery around the aquatic plant garden reflects on the water's surface

SHIROKANE
3

Minato City Local History Museum

☎ 03-6450-2107

This museum introduces the history and culture of Minato City through archeological artifacts excavated in the city, as well as books, works of art, and more. Special exhibitions related to Minato City are also held occasionally.

④ 4-6-2 Shirokanedai, Minato-ku (Within Yukashi-no-Mori) ⑤ Close to Exit 2 of Shirokanedai subway station ⑥ 300 yen (separate charge for special exhibitions) ⑦ 9 a.m.-5 p.m. (until 8 p.m. on Saturdays) ⑧ Every third Thursday of the month (closed on the preceding Wednesday if Thursday is a national holiday) ⑨ None



13 minute walk

④ Located in Yukashi-no-Mori, in a renovated building originally built in 1938 as the Institute of Public Health

A thoroughly elegant Art Deco-style residence



SHIROKANE
2

Tokyo Metropolitan Teien Art Museum

☎ 050-5541-8600 (NTT Hello Dial Service)

Set within a beautiful garden, this museum was the former residence of Prince Asaka, built in 1933 in the Art Deco style. Exhibitions are held in the historic main building, as well as the annex, which was opened in 2014.



④ Chandelier created by René Lalique which hangs in the salon of the main building Image provided by Tokyo Metropolitan Teien Art Museum

⑤ The building itself is a work of art, built by a collaboration between Japanese and French designers, engineers, and craftspeople Image provided by Tokyo Metropolitan Teien Art Museum

⑤ 5-21-9 Shirokanedai, Minato-ku ⑥ 6 minute walk from Exit 1 of Shirokanedai subway station, 7 minute walk from the East Exit of JR Meguro Station and the Main Exit of Tokyo Meguro Station ⑦ Varies depending on exhibition. Garden admission is 200 yen ⑧ 10 a.m.-6 p.m. (last entry 5:30 p.m.) ⑨ Every second and fourth Wednesday of the month (closed the following day if a national holiday) ⑩ 7 spaces (paid parking)

NE

☞ At the Thrush Café, you can savor the divine taste of meals made with naturally cultivated vegetables



Experience the changing of the seasons surrounded by the wistful nature of this Edo-era Japanese garden

Enjoy a stroll around this 17th century Japanese garden after enjoying a meal in one of the restaurants

SHIROKANE
4

Happo-en

☎ 0570-064-128

This wedding and event venue has several restaurants that boast a spacious Edo-era Japanese garden and pond as one of its focal points. The concept image of the garden was created by Fusanosuke Kuhara, a famous entrepreneur who was born in Meiji period (1868-1912) and lived through the Taisho period (1912-1926). Guests can dine in one of the two restaurants in the main building, while enjoying a view of the garden.

📍 1-1-1 Shirokanedai, Minato-ku 🚶 Close to Exit 2 of Shirokanedai subway station 🕒 Restaurant opening times vary 🚫 None 🪑 200 spaces

4 minute walk

15 minute walk

8 minutes by car

TAKANAWA
5

Sengakuji Temple

☎ 03-3441-5560

This old temple was established in 1612. Since this was the family temple of the Asano Family of the Ako Domain, the 47 Ako Gishi samurai who committed *seppuku* after their raid in 1702 are buried here.

📍 2-11-1 Takanawa, Minato-ku 🚶 6 minute walk from JR Takanawa Gateway Station 🆓 Free entry 🕒 7 a.m.-6 p.m. (until 5 p.m. in October-March) 🚫 None 🪑 None

An essential place for telling the *Chushingura* story



☞ Smoke endlessly unfurls from incense sticks in the cemetery



☞ Diorama of a logistics terminal with a railway, trucks, port, and airport at 1/150 size



☞ The red brick building located in Takanawa's residential district



☞ The temple has welcomed many visitors since the first performance of the Kabuki play *Chushingura*

What's the *Chushingura*?

In 1701, the feudal lord of the Ako domain Asano Naganori was ordered to commit *seppuku* (ritual suicide) for unfair reasons. Consequently, 47 of Asano's former vassals, the Ako Gishi, took revenge on Kira Kozukenosuke who had a hand in Asano's death. Although all of them were forced to commit *seppuku*, their loyal spirit continues to touch the hearts of Japanese people today. This story and its related works are known as *Chushingura*. The graves of the 47 can be visited at Sengakuji Temple, and you can also find valuable articles on display in the Ako Gishi's Memorial Hall on the temple premises.

Ako Gishi's Memorial Hall

🎫 500 yen 🕒 9 a.m.-4 p.m. 🗓 Last Wednesday of February and August

TAKANAWA
6

Museum of Logistics

☎ 03-3280-1616

This museum introduces the history of logistics and logistic systems, which has become an indispensable part of modern society. Its various highlights include an exhibit showcasing materials and recorded images related to the history of logistics from the Edo period to the Showa period (1603-1989), dioramas of logistics terminals, and quizzes on logistics.

📍 4-7-15 Takanawa, Minato-ku 🚶 7 minute walk from Exit A1 of Takanawadai subway station and the Takanawa Exit of JR and Keikyu Shinagawa Station 🎫 200 yen 🕒 10 a.m.-5 p.m. (last entry 4:30 p.m.) 🗓 Mondays, every fourth Tuesday of the month, days after national holidays and when exhibitions are changed *Closed for repairs from January-March 2021 🪑 5 spaces

4 minute walk

☞ The immersive "Patterns" area, where living things are in harmony with the four seasons



TAKANAWA
7

Maxell Aqua Park Shinagawa

☎ 03-5421-1111 (Automated service)

This entertaining city aquarium combines sounds, light, and images in its exhibits on ocean creatures. Also on offer are performances that change according to the season and time of day.

📍 4-10-30 Takanawa, Minato-ku (inside Shinagawa Prince Hotel) 🚶 2 minute walk from the Takanawa Exit of JR and Keikyu Shinagawa Station 🎫 2,300 yen (separate charge for attractions) 🕒 10 a.m.-6:30 p.m. (last entry 6 p.m.), until 8 p.m. on weekends and national holidays (last entry 7 p.m.) *Closing times of attractions and some facilities vary 🚫 None 🪑 Use the Shinagawa Prince Hotel parking lot (paid parking)

☞ A dolphin show in The Stadium using water curtains and lighting



Where an aquarium meets cutting-edge technology

Enjoy the delicious flavors
of Minato City

DINING & SHOPPING

In Minato City, home to about 240,000 residents, there is a full array of restaurants and patisseries you can choose from based on the occasion and your budget. Check out the unique dining spaces too!

Refined experiences that will enrich your trip Charming restaurants

Minato City is filled with charming restaurants serving delicious gourmet cuisine. Choose what you fancy from exquisite traditional cuisine, fusion eats incorporating global flavors, and more.

SHIMBASHI

Torikadoya

☎03-3431-0534

This restaurant prepares its famous *unaju*, consisting of eel served over rice in a lacquered box, by selecting a live eel, immediately grilling it without seasoning, removing the excess fat, then steaming it, grilling it with tare sauce, and serving it straight away. The dish has just the right amount of fat and a refined sauce preferred by Tokyoites. The restaurant's chicken dishes, such as *yakitori* chicken skewers grilled over a charcoal fire and *oyakodon* with Jidori chicken and egg over rice, are also recommended.

📍Shimbashi Suzuki Building 1F, 4-27-9 Shimbashi, Minato-ku 🕒8 minute walk from the Karasumori Exit of JR Shimbashi Station 🕒11 a.m.-2 p.m. (last order), 5 p.m.-7:30 p.m. (last order) (open until 9 p.m. if you reserve in advance) 🗳Saturdays, Sundays, national holidays 🚫None



📍The restaurant offers at-home hospitality, and the casual atmosphere which makes diners feel welcome



A well-known and friendly restaurant serving eel and chicken dishes that opened in 1912

Unaju Matsue

3,700 yen

Unaju costs 2,500-4,500 yen. The 1,900 yen *unadori* (eel over rice) is only served at lunch

A full-course meal prepared in an authentic way that ends with a delightful selection of nigiri sushi



📍The simple interior uses woodgrain and white as its color palette



Kiwami course meal (image shows the appetizer, seasonal vegetable dish, stewed dish, and some of the nigiri sushi)

8,800 yen

This full-course meal includes an appetizer, seasonal vegetable dish, sashimi, grilled dish, fried fish, vinegar dish, stewed dish, and 8 pieces of nigiri sushi

SHIROKANE

Shirokane Yokoyama

☎03-5422-6074

The head chef has 30 years experience making Japanese cuisine, and creates dishes with precision using seasonal ingredients from Toyosu, Tokyo. The full-course evening meal (from 7,200 yen) offers an appetizer, sashimi, and a stewed dish, and ends with a selection of nigiri sushi using sweet sushi rice made in the Kansai style.

📍3-9-6 Shirokane, Minato-ku 🕒7 minute walk from Exit 4 of Shirokanetakanawa subway station 🕒11:30 a.m.-1:30 p.m. (last order), 6 p.m.-9 p.m. (last order) *500 yen cover charge applies at dinner 🗳Sundays, national holidays 🚫None

Enjoy top-class nigiri sushi at one of Tokyo's most revered restaurants



Nigiri Sushi Special Selection 5,600 yen

This set features 10 pieces of nigiri sushi, including otoro premium tuna, seasonal whitefish, and deeply flavorful cooked conger eel, as well as rolled sushi. *550 yen cover charge applies at dinner

ROPPONGI

Otsuna Sushi

☎03-3401-9953

This venerable restaurant was established in 1875. Diners can enjoy traditional sushi and Japanese cuisine in a refined atmosphere. The sushi is made with high-quality ingredients, and is priced reasonably to allow diners to savor the authentic flavors in a casual way. Full-course evening meals start at 5,450 yen (from two people) plus a seating charge of 550 yen.

📍Remm Roppongi Building 1F, 7-14-4 Roppongi, Minato-ku 🕒2 minute walk from Exit 4b or Exit 7 of Roppongi subway station 🕒11:30 a.m.-2 p.m. (last orders), 5 p.m.-9 p.m. last entry (last entry at 8:30 on Saturdays) *Takeout available 10 a.m.-9 p.m. (until 8:30 p.m. on Saturdays, until 1 p.m. on Sundays) 🗳Sundays (takeout available), closed irregularly on national holidays 🚫None



📍In addition to counter seating with a direct view of the chefs' skills, there are also private rooms available



A secret terrace surrounded by a quiet canal

SHIBAURA

BAGUS BAR Shibaura Island

☎03-3455-4700

This dining bar with an open terrace is located along the Shibaura Canal. You can enjoy Italian dishes infused with Asian ingredients in a resort-like atmosphere.

📍Shibaura Island Air Terrace 1F, 4-22-2 Shibaura, Minato-ku 🕒10 minute walk from the East Exit of JR Tamachi Station 🕒11:30 a.m.-11 p.m. 🚫None 📍Use the 40-space parking lot at the Shibaura Island Terrace (paid parking)



📍The resort-like terrace will put you in the holiday mood and make you forget you're in the big city

Seasonal vegetable salad with homemade roast beef served with a soy sauce and balsamic dressing

1,628 yen

A luxury salad featuring tender roast beef with a deep umami flavor

One person can easily polish off one of the large pizzas made with homemade light, fragrant dough

AKASAKA

Pizzeria Ghitaro

☎03-5570-2130

This Italian restaurant is owned by a chef who trained in Northern Italy. Here you can enjoy pizzas from 1,800 yen with a crisp crust, fragrant aroma, and perfect springiness, as well as dishes made with Ghitaro Shamo chicken, which is where the restaurant name originated.

📍7-10-7 Akasaka, Minato-ku 🕒7 minute walk from Exit A7 of Akasaka subway station 🕒11:45 a.m.-2 p.m. (last order), 6 p.m.-10 p.m. (last order) (lunch only served on weekdays) 🗳Sundays, national holidays 🚫None



📍The wooden restaurant exterior stands out on a road of modern buildings

Bismarck 2,800 yen

The pizza is topped with boneless ham and mozzarella over tomato sauce, and eaten with runny soft-boiled eggs



Japanese sweets that will fill you with happiness when you open their packaging



④ You can also enjoy matcha green tea and seasonal Japanese sweets in the shop

AZABU

Azabu-Syougetsudou

☎03-3407-0040

This shop's Iitmainagashi-Azabu-Anmitsuyoukan is a hybrid of two Japanese sweets (*anmitsu*, made with syrupy sweet red bean paste and fruit, and *yokan* Japanese jelly) that mixes chestnuts, *gyuhi* soft mochi, and *kanten* vegetarian gelatin into smooth yokan. The buckwheat *dorayaki*, a sweet consisting of two pancakes sandwiching a sweet red bean paste filling, has a smooth and excellent flavor.

④ 4-22-12 Nishi-azabu, Minato-ku ⑤ 11 minute walk from Exit 4 of Hiroo subway station ⑥ 10 a.m.-6 p.m. ⑦ Sundays, national holidays ⑧ None

④ Front: Iitmainagashi-Azabu-Anmitsuyoukan 1,188 yen, back: Azabu Buckwheat Dorayaki 270 yen

Bite-size, shellfish-shaped *monaka* sweets that are filled with five kinds of anko sweet red bean paste

SHIBA

Shiba Shinmei Eitaro

② One piece of Enoshima Monaka costs 124 yen. You can enjoy them with five kinds of sweet anko: *Koshian* strained red bean paste, *tsuburan* chunky red bean paste, *shiroan* white bean paste, *yuzuran* made with yuzu citrus fruit, and *gomaan* made with sesame seeds

☎03-3431-2211

The shop separated from Eitaro Sohonpo in Nihombashi in 1885, setting up an independent store. Its Enoshima Monaka, named by the literary master Koyo Ozaki, are cute sweets shaped like shellfish such as scallops and abalone. You can sense the techniques of a long-established shop when you taste the refined and smooth flavors of the bean paste that serves as the filling.



① 1-4-14 Shibadaimon, Minato-ku ② Close to Exit A5 of Daimon subway station, 6 minute walk from the North Exit of JR Hamamatsujo Station ③ 9 a.m.-7 p.m. (until 2 p.m. on Saturdays) ④ Sundays, national holidays, Saturdays in August ⑤ None



④ The sign with calligraphy by Taro Okamoto is also a must-see

Bring home delicious memories!

Recommended souvenirs

Artisanal Japanese confectionery and sweets make perfect souvenirs. Minato City's unique flavors will enrich your trip.

Features a varied lineup of Japanese bean confectionery including peanuts from Chiba Prefecture

AOYAMA

Aoyama Tajimaya

☎03-3401-2843

Established in 1894, this shop specializes in sweets made with beans and nuts. It offers an assortment of about 70-80 types of individually-portioned sweets and snacks, such as beans and okaki mochi (rice crackers). Its Aoyama-yaki with peanut paste for 250 yen are freshly made in the shop (not available from July-September).

① 2-7-11 Kita-aoyama, Minato-ku ② Close to Exit 4b of Gaienmae subway station ③ 10 a.m.-7 p.m. (until 5 p.m. on Saturdays, Sundays, and national holidays) ④ Every third Sunday of the month ⑤ None

⑤ Orangettes made with orange peels from France, 1,782 yen for 75g

Chocolate created by an artisan with skills developed in France, with a flavor that you will want to savor

TAKANAWA

Chocolat L'echevin

☎03-5422-9763

The shop's owner studied at western confectioners in Japan for ten years, then spent a further two years training at patisseries in France after that. All of the bite-sized sweets are made with carefully selected ingredients, and are blissfully delicious.

① 3-10-5 Takanawa, Minato-ku ② 2 minute walk from Exit A1 of Takanawada subway station ③ 11 a.m.-6:30 p.m. ④ Sundays, irregular closures on Monday ⑤ None



④ You'll want to compare the taste of the various flavors, such as Atohikimame peanuts (300 yen)



④ A renowned shop that is frequented by nearby companies to purchase gifts traditionally given when visiting clients



④ In addition to chocolate, the cozy shop also has a selection of cakes and baked sweets

DAIBA

Enjoy comparing flavors at food theme parks!

You can enter at your leisure and sample the flavors of famous restaurants around Japan in an fun atmosphere!

Experience Japan's world-renowned ramen culture

Tokyo Ramen Kokugikan Mai

☎03-3599-4700 (Aqua City Odaiba)

Six ramen restaurants are featured, with three hailing from the popular ramen hubs of Sapporo, Fukuoka, and Tokyo, and the rest from regional spots for enjoying ramen, including Kawagoe, Kanagawa, and Kanazawa. In addition to the restaurants' signature menu options, there are also limited menu items that cannot be tasted anywhere else.

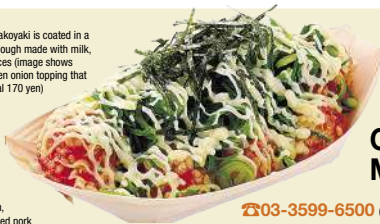


④ You can taste and compare popular ramen from throughout Japan in Odaiba

① Aqua City Odaiba 5F, 1-7-1 Daiba, Minato-ku ② Close to Yurikamome Daiba Station ③ Free entry ④ 11 a.m.-10:30 p.m. (last order) ⑤ Not fixed (same as Aqua City Odaiba) ⑥ Use the 900-space parking lot at Aqua City Odaiba (paid parking)

④ Nidaimo Hakata Daruma Ramen, topped with plenty of chashu braised pork and costing 1,300 yen, is only available at Odaiba

④ Juhachiben's takoyaki is coated in a signature crispy dough made with milk, 670 yen for 8 pieces (image shows takoyaki with green onion topping that costs an additional 170 yen)



The simple yet deep world of takoyaki

Odaiba Takoyaki Museum

☎03-3599-6500 (DECKS Tokyo Beach)

- Showcases five famous restaurants from Osaka, the homeland of takoyaki octopus balls, that appear to surround the Takoyaki Ebisu Shrine, a shrine set up to deify the god Ebisu, who is enshrined at Imamiya Ebisu Shrine in Osaka. Try all of the different ingredients, dashi broth, and cooking techniques.
- DECKS Tokyo Beach Seaside Mall 4F, 1-6-1 Daiba, Minato-ku ② 2 minute walk from Yurikamome Odaiba-kaikinkoen Station ③ Free entry ④ 11 a.m.-10 p.m. *Opening times of some shops vary *Check the official website for the latest info ⑤ Not fixed (same as DECKS Tokyo Beach) ⑥ Use the 550-car capacity DECKS Tokyo Beach parking lot (paid parking)



④ A festival-like bustling atmosphere

TOKYO TOWER TOP DECK TOUR

TOKYO TOWER

TOKYO MONORAIL HANEDA

HAMAMATSUCHŌ ← → HANEDA AIRPORT

billboard LIVE TOKYO

Operating under the name of Billboard, the most trusted, global music brand with a history of over 100 years, Billboard Live welcomes top artists from Japan and around the world, aiming to provide dishes by our top-class chef and carefully-selected drinks. The stage itself features a glass backdrop.

Access:
The venue is located at Tokyo Midtown Roppongi, and easy to access from Roppongi Station via an underground passageway.

www.billboard-live.com/

SUNTORY MUSEUM OF ART

サントリー美術館
SUNTORY MUSEUM OF ART

Website Movie

Suntory Museum of Art
Tokyo Midtown
Galleria 3rd floor, Roppongi
9-7-4 Akasaka, Minato-ku, Tokyo 107-8643
<http://www.suntory.com/sma/>



TOURIST INFORMATION in MINATO CITY

Minato City Tourist Information Center

An information center located at Tokyo Monorail Hamamatsuchō Station, which is convenient for tourists. It provides information in English on tourism, transportation, restaurants, and accommodation (service is also available in Korean on some days). It also has a selection of tourism-related pamphlets.

📍Tokyo Monorail Hamamatsuchō Station 3F Concourse, 2-4-12 Hamamatsuchō, Minato-ku 📍Close to Tokyo Monorail Hamamatsuchō Station 🕒9 a.m.-7 p.m.
📵None 📵None

Check the Minato City Official Visitor Guide
<https://visit-minato-city.tokyo/en/>
Provides information on tourism, dining, accommodation, and more in Minato City.

Visit the Minato City Official Facebook Page
Provides tourism and event information for Minato City, as well as the latest news. Please check it out!

You can also get support at these locations!

Roppongi Hills General Information
Roppongi Hills → **Page 4**

Aqua City Odaiba Information
Aqua City Odaiba → **Page 7**

Keikyu Tourist Information Center, Shinagawa Station At Shinagawa Station
→ **Map on page 3**

Tokyo Tourist Information Desk, Kiraboshi Bank Head Office Near Omotesando Station
→ **Map on page 3**

Published by: Tokyo Minato City Travel & Tourism Association
Supported by: Tourism Policy Subsection, Industry and Community Promotion Support Department, Minato City Planning, editing, production: JTB Publishing, Inc.
©Tokyo Minato City Travel & Tourism Association / JTB Publishing, Inc. All Rights Reserved.

*The data in this publication is correct as of November 2020. Some data may be changed after publication, so we recommend confirming ahead of time by telephone or another method prior to departure. Furthermore, we will not be held responsible for providing any compensation for damage, etc. arising from the content in this publication. *All fees listed in this publication are the fee for an adult, unless otherwise stated. *In general, the prices listed are inclusive of consumption tax. *In general, fixed holidays are exclusive of the New Year's holiday period, the Obon holiday period, and Golden Week. *Unless otherwise stated, the usage hours are the general opening (venue) and closing (venue) times. Please note that last order/last entry times (for a venue) are usually 30 minutes to one hour before closing. *Transportation information may be changed due to the effects of disasters, seasons, etc. Please inquire with each transportation company prior to departure. The maps in this publication were created with the approval of the Director-General of the Geospatial Information Authority of Japan, and are used for the Digital Map (Basic Geospatial Information) and Digital Japan Basic Map (Map Information) (Approval number: 2018 No. 344).
Cover photograph kindly provided by Tokyo Minato City Travel & Tourism Association