



A new fun space connecting Asakusa and TOKYO SKYTREE TOWN

Best Recommendation

In Spring 2020, "TOKYO mizumachi" will open under the railway between Asakusa Station and TOKYO SKYTREE Station on the Tobu Line. This complex facility will have 12 tenants, including restaurants, cafés, stores, and a hostel. On the bridge over the Sumida River between the stations, a new pedestrian bridge called "Sumida River Walk" will also be created.

www.tobu.co.jp/foreign/en/pdf/20191115_2.pdf

Asakusa Sta. (Tobu, Subway),
TOKYO SKYTREE Sta. (Tobu),
Oshiage Sta. <SKYTREE> (Subway, Keisei)



Opening of GREEN SPRINGS as a well-being town in Tachikawa on April 10

Next to Showa Kinen Park, GREEN SPRINGS will open soon, which contains restaurants, shops, TACHIKAWA STAGE GARDEN (a multi-purpose hall with 2,500 seats), SORANO HOTEL (opening on May 12 with 81 rooms) with a unique "Infinity Pool" filled with newly excavated natural hot spring water, and a spacious plaza of about 10,000 m² surrounded by buildings.

Tachikawa-kita Sta. (Tama Monorail), Tachikawa Sta. (JR)

greensprings.jp/

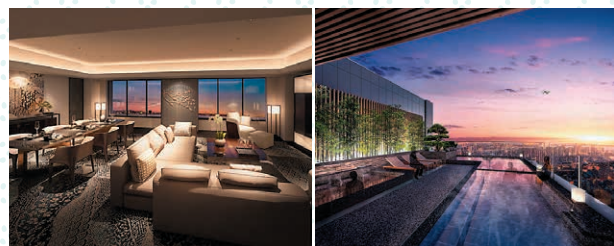


"Haneda Airport Garden" to be opened in spring

Directly connected to Haneda Airport Terminal 3 (International Terminal), this large-scale complex facility will open with various tenants, including luxury hotel "Villa Fontaine Premier Haneda Airport" (with 160 rooms), high-grade hotel "Villa Fontaine Grand Haneda Airport" (with 1,557 rooms), a natural hot spring water onsen facility "Izumi Tenku no Yu" that offers an open-air bath with a view of Mount Fuji and airplanes, and about 90 shops and restaurants.

Haneda Airport Terminal 3 (International Terminal) Sta. (Keikyu), Haneda Airport Terminal 3 (International Terminal) Sta. (Tokyo Monorail)

www.sumitomo-rd.co.jp/lp/hanedaairport/



©Sumitomo Realty & Development Co., Ltd

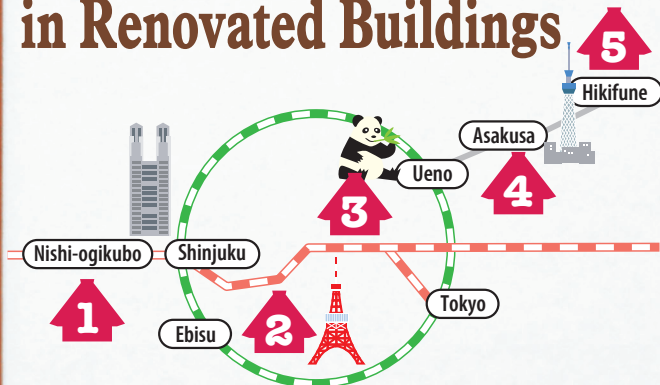
Newly Opened Hotels Information

Opening on Apr. 30, Hotel Yaenomidori Tokyo, 218 rooms

Opening on Jun. 1, Kimpton Shinjuku Tokyo, 151 rooms

Opening in July, Four Seasons Hotel Tokyo at Otemachi, 190 rooms

Eating Places in Renovated Buildings



Restaurants and cafés in renovated old traditional Japanese-style houses and warehouses are now gaining popularity! Enjoy a space where the “Old meets New”!



Dry curry with onion and ground meat
(with potage soup of the day and salad) 1,320 yen



Orange cheese cake 539 yen



2 tenement www.tenement.jp/

This café in a renovated old Japanese-style house serves 8 kinds of homemade cheesecakes and healthy dishes made with ingredients from Kyushu.

■ Hiro-o Sta. (Subway),
Ebisu Sta. (JR)



Pancakes with seasonal fruits (with a drink) 2,000 yen

4 iriya plus cafe @ Custom Soko www.instagram.com/naomi_imamura_iriya_plus/

A café located in a remodeled apparel warehouse on a back alley in a quiet residential area. This café is the second branch of iriya plus cafe in a renovated Japanese traditional house in Iriya. It offers fluffy pancakes, panini (1,500 yen inclusive of a beverage), and more.

■ Tawaramachi Sta. (Subway), Asakusa Sta. (Subway, Tobu, Tsukuba Express)



Musubi-zen (the contents change twice a month) 1,650 yen



Nigiri-yasai-sushi-zen 1,650 yen

1 Re:gendo www.gungendo.co.jp/pages/details/003102.php

A restaurant in a renovated Western-style residential facility (called “bunka jutaku”) built in the early 20th century. The place offers sets such as “Musubi-zen,” in which the meal contents are changed twice a month, and “Nigiri-yasai-sushi zen.” ■ Nishi-ogikubo Sta. (JR)



Using a renovated old house built in the Meiji period and designated as one of the registered tangible cultural properties of Japan. The restaurant offers a lunch set, “Hiru-zen,” with 8 kinds of kushiage (deep-fried skewered ingredients) (3,520 yen), a course set with 12 kinds of kushiage (4,730 yen), and various other dishes. ■ Nezu Sta. (Subway)

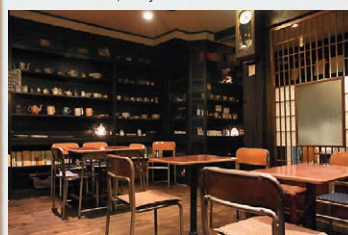
3 Hantei hantei.co.jp/



Baked Omurice 1,050 yen

5 Koguma ko-gu-ma.com/

Utilizing the structure and items of an old pharmacy, the café creates a unique space. Its tables and chairs were once used in a cram school for junior high school students. The café offers several lunch sets, including the popular “Baked Omurice” (omlet rice), and homemade sweets (500 yen). ■ Hikifune Sta. (Tobu)





Tokyo Walking



Model Walking Route

1 Kokuritsu-kyogijo Sta.

10 min. on foot

2 Japan Olympic Museum

12 min. on foot

3 Royal garden Cafe AOYAMA



Gourmet Guide



a BALCONIWA

You can enjoy a variety of original dishes made with domestic A5-grade Japanese Black beef. You can also use the rooftop barbecue facility with breezy terrace seating. The shop offers A5-grade Japanese Black rump steak (180 grams for 4,378 yen), curry with stewed A5-grade Japanese Black tendons (1,298 yen) and others. balconiwa.com/



b Minami-Aoyama Itoya

Itoya serves original Japanese dishes in which cooking methods from all over the world are artfully combined. The dishes are made with carefully-selected ingredients such as fresh seasonal fish, seafood, vegetables from all over Japan and brand wagyu beef. A lunch course is offered for 3,000 yen and up, and a dinner course is from 5,500 yen and up. itoya-aoyama.com/



c Royal Garden Cafe AOYAMA

From the inside, this café-restaurant offers a wonderful nature view that changes from season to season. It offers various dishes including doria lunch and pasta lunch (1,221 yen each), and grilled Tottori Daisen dori chicken marinated in lemongrass (1,870 yen). Royal-gardencafe.com/news/news_category/aoyama/

The Area around the New National Stadium

The New National Stadium, which will serve as the main venue for the 2020 Summer Olympics and Paralympics, has been completed! Before the big event, the stadium is attracting worldwide attention.



d Japan Olympic Museum

Opened in September 2019, this museum is a focal center of the Olympic Movement. Here you can learn about the Olympics from various perspectives. Admission to the 1st floor is free, and the fee for the 2nd floor exhibition room is 500 yen for adults (free for high school students and younger). japan-olympicmuseum.jp/en/



e doinel

Various things such as interior accessories and grocery products selected by the owner, who is an expert in Nordic goods and items, are available. The owner's carefully selected wine collection from other countries and food pairings are also available. doinel.net



f KQURIOUS

Selling colorful legwear with distinct designs and other unique goods and items. The shop also serves as a café where you can have a nice cup of coffee made from freshly ground beans. www.kqurious.com/



g Aoyama Kila Street

Home to both new and old, from cycling shops and stylish boutiques to Aoyama Kumano-jinja Shrine, creating a unique atmosphere. There are lots to see, including restaurants and cafés that appear in the Michelin Guide and the popular media, and long-established stores. www.kilakila.info/

Tokyo Festival/Event Information Mar. – Sep. 2020

祭り

◆Late Mar.–May 6

Tokyo Tower “Koinobori” @Tokyo Tower
www.tokyotower.co.jp

As the height of Tokyo Tower is 333 meters, 333 sets of colorful koinobori (carp streamers) will be swimming at the foot of Tokyo Tower, creating an overwhelming scenery. At night, the koinobori will be illuminated.

📍 Akabanebashi Sta. (Subway), Kamiyacho Sta. (Subway), Onarimon Sta. (Subway), Shibakoen Sta. (Subway), Daimon Sta. (Subway), Hamamatsucho Sta. (JR)



◆Mid Apr.–Mid May

Spring Botan (Peony) Festival
@Ueno Toshogu Shrine (inside Ueno Park)
www.uenotoshogu.com/

More than 500 peony plants are in full bloom. The café in the park offers *wagashi* (traditional Japanese sweets), tea, and other items. Enjoy viewing the beautiful Japanese style garden which retains the Edo atmosphere in a relaxing mood.

Ticket Admission: Please check the fees at the venue (free for elementary school students)

📍 Ueno Sta. (JR, Subway), Keisei Ueno Sta. (Keisei)



◆Apr. 30–May 6

Kurayami (Darkness) Festival
@ Okunitama-jinja Shrine
www.okunitamajinja.or.jp/

Designated by Tokyo Metropolitan Government as an Intangible Folk Cultural Property, this festival offers over seven days various Shinto rituals, where, among others, *mikoshi* (portable shrines) are carried around in the dark, as well as some highlights of large drum performances and *dashi* (festival floats) parades.

📍 Fuchu Sta. (Keio), Fuchuhommachi Sta. (JR)

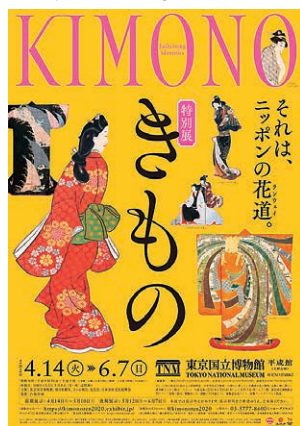


Pick-up Topic: Events

◆Apr. 14–Jun. 7 Special Exhibition KIMONO: Fashioning Identities
@Tokyo National Museum

www.tnm.jp/modules/r_free_page/index.php?id=1987&lang=en
More than 200 kimono-related items are displayed, including kimono worn by historical figures in Japan such as Oda Nobunaga, Toyotomi Hideyoshi, Tokugawa Iyeyasu, and Atsuhime; kimono drawn by Ogata Korin; painting designated as a national treasure with kimono drawn on; and kimono created by modern designers. **Ticket** Ticket at door: 1,700 yen

📍 Ueno Sta. (JR, Subway), Uguisudani Sta. (JR), Nezu Sta. (Subway), Keisei Ueno Sta. (Keisei)



◆Apr. 23–Sep. 6

STARS: Six Contemporary Artists from Japan to the World
@Mori Art Museum

www.mori.art.museum/en/exhibitions/stars/index.html

This exhibition features the earliest and latest works of six artists—Yayoi Kusama, Lee Ufan, Tatsuo Miyajima, Takashi Murakami, Yoshitomo Nara, and Hiroshi Sugimoto—who are highly acclaimed in the world of modern art in Japan and internationally.

Ticket Ticket at door: 1,800 yen

📍 Roppongi Sta. (Subway), Azabu-juban Sta. (Subway)



Yoshitomo Nara
Voyage of the Moon (Resting Moon)
/ Voyage of the Moon
2006 Mixed media 476 x 354 x 495 cm
Cooperation provided by: graf
Collection: 21st Century Museum of Contemporary Art, Kanazawa
Photo: Nakamichi Atsushi / Nacasa & Partners

◆Jun. 6–Jul. 12

Hand Painted Ukiyo-e – From
Moronobu to Shunsho,
Utamaro, and Hokusai
@ Idemitsu Museum of Arts
idemitsu-museum.or.jp/en/exhibition/

Ukiyo-e (Japanese woodblock prints) richly characterized the colorful art history of the Edo period. This exhibition introduces the creative expression techniques used by ukiyo-e artists from the 17th to 19th centuries along with discoveries from recent restoration works.

Ticket Ticket at door: 1,000 yen

📍 Yurakucho Sta. (JR, Subway), Hibiya Sta. (Subway)



桜下三美人図
勝川春章 江戸時代 出光美術館

Event Calendar

Date/Title	Venue	Content
Mar. 14–Jun. 14 Special Exhibition WASHOKU Nature and Culture in Japanese Cuisine	National Museum of Nature and Science, Tokyo 📍 Ueno Sta. (JR, Subway), Keisei Ueno Sta. (Keisei)	This exhibition introduces the charming aspects of <i>washoku</i> (Japanese cuisine) from various viewpoints, such as ingredients, techniques, cooking methods, and historical changes, explained through scientific commentaries and visual presentations based on samples and materials. washoku2020.jp/english.html
Apr. 24–Jun. 16 Discovering the Arts & Culture of the Olympic Games	Mitsui Memorial Museum 📍 Mitsukoshimae Sta. (Subway), Nihombashi Sta. (Subway), Shin-Nihombashi Sta. (JR), Kanda Sta. (JR, Subway)	Featuring artworks which were created from the Olympic culture, such as poster designs by famous artists, as well as the Olympics Opening Ceremony, this exhibition offers a place for discussion about the creativity and artistry inspired by the Olympics. www.mitsui-museum.jp/exhibition/agora/

For other festivals and events...

See official Tokyo travel guide
“GOTOKYO”

www.gotokyo.org/en/



Editor's note

Although Tokyo bears a strong image of an advanced urban city, it has lots of cafés and restaurants in old traditional Japanese-style houses that evoke a historical vibe. When I come across such a store, I take a look at the exterior and pay extra attention to the details of the interior design. I believe that Japanese lunch and sweet treats taste better in a nostalgic, retro space. Sometimes you should enjoy a relaxing atmosphere away from the hustle and bustle of the city.

