

# Fuchu Event Calendar



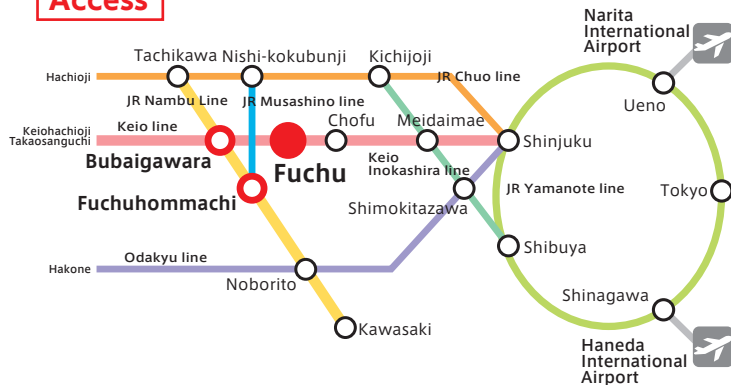
Kurayami Matsuri (Darkness Festival)



Fuchu Keyaki Namiki Illumination

Feb to early Mar	Ume Matsuri (Japanese Apricot Festival)	Municipal Museum KYODONOMORI <a href="#">MAP</a> <a href="#">P.28 B-3</a>
Feb 3	Setsubunsai (Bean-Scattering Festival)	Okunitama-jinja Shrine <a href="#">MAP</a> <a href="#">P.31 C-2</a>
Late Mar to early Apr	Shimin Sakura Matsuri (Citizens' Cherry Blossom Festival)	Sakura-dori St., Fuchu Park, etc. <a href="#">MAP</a> <a href="#">P.29 C-2</a>
May 3-6	Kurayami Matsuri (Darkness Festival)	Okunitama-jinja Shrine <a href="#">MAP</a> <a href="#">P.31 C-2</a>
June to early July	Ajisai Matsuri (Hydrangea Festival)	Municipal Museum KYODONOMORI <a href="#">MAP</a> <a href="#">P.28 B-3</a>
July 20	Sumomo Matsuri (Japanese Plum Festival)	Okunitama-jinja Shrine <a href="#">MAP</a> <a href="#">P.31 C-2</a>
Early Aug	Shoko Matsuri (Commerce and Industry Festival)	Okunitama-jinja Shrine <a href="#">MAP</a> <a href="#">P.31 C-2</a>
Late Aug	Keyaki (Zelkova trees) Festa Yosakoi - Dance in Fuchu	Keyakinamiki-dori St., etc. <a href="#">MAP</a> <a href="#">P.31 C-2</a>
Sept 27 & 28	Kuri Matsuri (Chestnut Festival)	Okunitama-jinja Shrine <a href="#">MAP</a> <a href="#">P.31 C-2</a>
Sept to Oct	Take-akari (Bamboo Lanterns Illumination)	Keyakinamiki-dori St., etc. <a href="#">MAP</a> <a href="#">P.31 C-2</a>
Nov	Keyaki (Zelkova trees) Music Festival JAZZ in FUCHU	Keyakinamiki-dori St., etc. <a href="#">MAP</a> <a href="#">P.31 C-2</a>
Nov	Machinaka Festival (Food Festival)	Keyakinamiki-dori St., etc. <a href="#">MAP</a> <a href="#">P.31 C-2</a>
Early Nov to late Dec	Fuchu Keyaki Namiki (Zelkova Trees) Illumination	Keyakinamiki-dori St., etc. <a href="#">MAP</a> <a href="#">P.31 C-2</a>

## Access



- **Narita International Airport**  
By train ..... 2hour15min
- **Haneda International Airport**  
By train ..... 1hour30min  
By Airport shuttle bus ..... 1hour30min
- **Mt. Takao**  
By train ..... 30min
- **Keio line** (Express)  
From Shinjuku to Fuchu 22min.  
From Keio-hachioji to Fuchu 17min.
- **JR Chuo/Musashino line**  
From Shinjuku to Fuchuhommachi via Nishi-kokubunji 35min.
- **JR Nambu line**  
From Kawasaki to Fuchuhommachi 37 min.  
From Hachioji via Tachikawa 27min.

Publisher/Fuchu 2020 Executive Committee, Fuchu City (Tel. 042-335-4006 HP. <http://www.city.fuchu.tokyo.jp>)  
Corporate Publisher/Fuchu Tourism Association Fuchu City Shopping Street Alliance Musashifuchu Chamber of Commerce and Industry  
English Translation by Languages and Culture Supporters from Tokyo University of Foreign Studies.

● These data are as of December 2018 to January 2019. Please confirm them beforehand in case they may be changed. ● As for troubles or damages caused by these data, we cannot take responsibility for them. We ask for your understanding. ● As for shops' business hours and opening hours, we reported them according to the time of their last orders or the time of last entry. ● According to shops' holidays, we indicate only their regular holidays except special holidays, the Bon holidays, and the New Year's holidays. ● ©2019 Fuchu City ● Shobunsha Publications, Inc. 2019.4



The city will hold events to celebrate this memorial day.

## ● Citizens' Parade

**Date**  
Sun, Oct 20, 2019

**Details**  
Taiko Drums Parade,  
Traditional local music & dance  
performance, Floats Parade

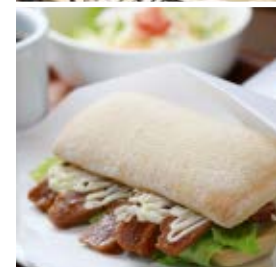
**Place**  
Keyakinamiki-dori St. and  
Kyu-koshu-kaido Ave.

\* Please visit Fuchu City's official  
website for further information



# Fuchu Gourmet Guide

*For Visitors*





# Let's enjoy Rugby World Cup 2019, Japan!

## Match Schedule

Fri, Sept 20 -  
Sat, Nov 2, 2019

Rugby World Cup tournament, held every four years, will come to Japan at last. 20 elite rugby teams will compete with each other. The opening match will be held at Tokyo Stadium near Fuchu. Let's enjoy Rugby World Cup - one of the 3 best sports festivals, along with the Summer Olympics and FIFA World Cup!

## 1 TOKYO STADIUM (AJINOMOTO STADIUM)

Rugby World Cup 2019™ will be held in 12 places nationwide from Hokkaido in the north to Kumamoto prefecture in the south. Eight matches will be held at Tokyo Stadium starting from the opening match of the Japan National Rugby Union Team.

376-3 Nishimachi, Chofu-shi  
5 min walk from Keio Line Tobitakyu Sta./20 min from Seibu Tamagawa Line Tama Sta.

## Match Schedule at TOKYO STADIUM

9/20 (Fri) 19:45  
9/21 (Sat) 16:15  
9/29 (Sun) 16:45  
10/5 (Sat) 17:00  
10/6 (Sun) 13:45  
10/19 (Sat) 19:15  
10/20 (Sun) 19:15  
11/1 (Fri) 18:00

JAPAN v RUSSIA  
FRANCE v ARGENTINA  
AUSTRALIA v WALES  
ENGLAND v ARGENTINA  
NEW ZEALAND v NAMIBIA  
Quarter-final  
Quarter-final  
Bronze final

## Camp Information

The official team camp site of the powerful England and France teams!

Fuchu City is the official team camp site of England (the birthplace of rugby) and France (the country which won the second place in the 1987 first Rugby World Cup). Good opportunity to feel the power of the best players in front of you.



## 2 Fuchu Asahi Football Park

Renewal facility for Rugby World Cup 2019 and Tokyo 2020 Games. Japan National Team held their camp there in 2018 and will hold it as well in 2019.

3-7 Asahicho, Fuchu-shi  
9 min walk from Seibu Tamagawa Line Tama Sta.

## Column

### The difference and attractiveness of rugby union and rugby sevens

Rugby sevens is an official tournament for the Olympics, while rugby union is official in the World Cup. Let's compare the two competitions and explore the attractiveness.

	Rugby union	Rugby sevens
Match time	The first half / second half both 40 min each	The first half / second half both 7 min each
Half time	Within 15 min	Within 2 min

What is the attraction of rugby union?

Scrum assembled by eight players. The fun of rugby union is the power that the trained body collides with!

What is the attraction of rugby sevens?

Ground is the same as rugby union. Speedy match-up which turns the ball quickly with few players is fun.

# Enjoy the Olympic and Paralympic Games Tokyo 2020!

The Olympic and Paralympic Games will be held in Tokyo in 2020 for about 2 weeks each, with 33 olympic games and 22 paralympic games. Fuchu City is proud to be the starting point for the road race, as well as hosting pre-camps and other events in the city. It will be a unique chance to experience this big sports festival.

## Game Schedule

Games of the XXXII Olympiad  
Fri, July 24 - Sun, Aug 9, 2020  
Tokyo 2020 Paralympic Games  
Tue, Aug 25 - Sun, Sept 6, 2020

## Start from Fuchu City

### Road Race

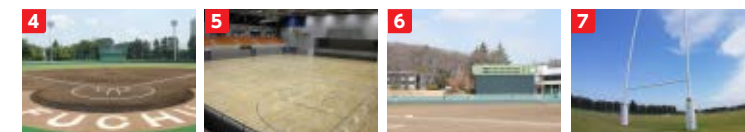
Sat, 25 - Sun, 26 July, 2020

Cyclists compete in order of arrival to the finish line on the general road. They start the race from Metropolitan Musashinonomori Park in Fuchu and go through Tokyo, Kanagawa, Yamanashi, Shizuoka, and aim for the Fuji Speedway. Before the race, a bicycle parade is to be held within the city, starting from Metropolitan Musashinonomori Park through Tohachi-doro Ave., Koganei-kaido Ave., Sakura-dori St., Keyakinamiki-dori St., Fuchu-kaido Ave., to the official starting point at the Koremasa Bridge. Above all, the course which passes through Keyakinamiki-dori St. (two rows of Zelkova trees along the avenue) of the designated natural monument is the biggest attraction.

## Pre-Games camp information

### Campsite of Australia (baseball) & Austria (table tennis)!

Both Australia and Austria teams can come prior to the Olympic Games to get used to the environment such as the time difference and the climate. Preliminary camping will be held in the city. In addition, Japanese national rugby sevens camp is being held at the Fuchu Asahi Football Park.



## 4 Fuchu Baseball Stadium

2-19 Kotobukicho, Fuchu-shi  
5 min walk from JR Musashino Line Kita-fuchu Sta.

## 5 Kyodo-no-Mori General Gymnasium

5-5 Yazakicho, Fuchu-shi  
Take a Keio Bus bound for Kyodo-no-Mori Sogo Taikukan from Bubaigawara Sta. (JR Nambu Line or Keio Line) The gymnasium is nearby the last bus stop.

## 6 Utsumi-Shimaoka Ballpark, Meiji Univ.

## 7 Fuchu Asahi Football Park

5-6-1 Wakamatsucho, Fuchu-shi  
25 min walk from Keio Line Higashi-fuchu Sta., or take a Keio Bus bound for Musashi-Koganei Sta. South Exit, get off at 'Wakamatsu-4-chome' and walk 10 min.







# Recommendations



Mini Course (¥2,160), you can enjoy fresh fish such as sushi, otsukuri (sliced raw fish) and sanga-yaki (grilled fish) etc.

## Tachibana Sushi Shop

Cultivated in a quiet bar neighborhood in front of the Fuchuhommachi Station, you can enjoy fresh seafood ordered from all over Japan in your favorite style of eating, including sushi. There is abundant menu of alcohol drinks such as sake, shochu and craft beer which go well with the cuisines.



New store opened in June 2018.

- ☎ 042-306-7501
- 🕒 5pm-11pmLO/Sun 12pm-9pm
- 📅 Mon
- 📍 2-20-52 Hommachi, Fuchu-shi
- 🚶 1min walk from JR Fuchuhommachi Sta.
- 👤 18 seats
- 🚭 Non-smoking

Bansyaku Set(¥2,000) is a good deal which contains one drink, one menu and three dishes from sashimi or delicacies. Try to start from this set!



Tomahawk steak is 1 g ¥5. It's breathtaking! Approximately 1 kg of meat with bone is outstandingly photogenic!

## Meat and Cheese Bal GRILL Shop

Enjoy suitably arranged meat and cheese according to their characteristics and craft beer from both Japan and the rest of the world. You can find the best combination of meat and beer there.



Good access from both Keio Line Fuchu Sta. and JR Fuchuhommachi Sta.

- ☎ 042-370-1815
- 🕒 4pm-11:15pmLO/Fri & the days before holidays
- 🕒 4pm-12:15amLO/Sat 3pm-12:15amLO/
- 🕒 Sun & holidays 3pm-11:15pmLO
- 📅 Not fixed
- 📍 2-14-3 Miyamishicho, Fuchu-shi
- 🚶 5min walk from Keio Line Fuchu Sta.
- 👤 40 seats
- 🚭 Smoking

You should definitely try craft beer which has specifically shaped glass. You must find favorite one.

Excuse me.

🗨️ [jp]sumimasen

Table for two.

🗨️ [jp]Futari desu.

1 person → [jp]hitori, 2 people → [jp] futari  
3 people → [jp] san-nin, 4 people → [jp] yo-nin

Do you have a table for ×-people?

🗨️ [jp]×-nin wa hairemasuka?

Excuse me. Is there a table for three?

🗨️ [jp]sumimasen. San-nin desuga aiteimasuka?

- 📞 Tel.
- 🕒 Operating hours
- 🗨️ \*LO stands for "last order"
- 📅 Holiday/Closed
- 📍 Address
- 🚶 Access
- 👤 Number of seats
- 🚭 Smoking or Non-smoking



Craft beer from ¥650,  
Octopus with garlic and chili with bread(¥680)

## Café & craft beer Asaya

Café specializing in domestic craft beers. The food menu is quite versatile from appetizers to have with your drinks to filling meat dishes and curry. All the cakes on the dessert menu are homemade, and you will be surprised how well they go with full-bodied beers.

- ☎ 042-302-0388 🕒 5pm-9:40pmLO 📅 Sun & Mon
- 📍 1st floor, 5-4-3 Miyamishicho, Fuchu-shi
- 🚶 7min walk from Keio Line Fuchu Sta. 👤 30 seats
- 🚭 Non-smoking



With its bright ambiance like a café,  
it is a comfortable spot for female solo visitors.

We have an extensive  
selection of craft beers of  
various styles from  
all over Japan.



We have numbers of branded beer glasses,  
and you can taste the beer in the shop.

## Beer House Ken

One of a few shops in Tokyo that sell about 300 different kinds of beers from all around the world including Belgian, German, English, American and Czech, etc. A beer connoisseur will help you choose the best beer to your liking.

- ☎ 042-369-7710 🕒 11am-9pm 📅 Wed
- 📍 2-3-8 Miyamachi, Fuchu-shi
- 🚶 5min walk from Keio Line Fuchu Sta. 🚭 Non-smoking



Our showcase is quite impressive with  
beers from all over the world lined up.

We often hold beer  
tasting events (for a  
fee). Look for details on  
our website.

## Wine TerraceYume

A wine terrace where you can enjoy original Italian dishes and imported California wine. Located in a quiet alley, it can be a perfect getaway spot for you. Our friendly staff will be happy to serve you lunch and dinner. Have a precious time at our terrace!

- ☎ 042-302-3977
- 🕒 11:30am-2pmLO, 5:30pm-10pmLO
- 📅 Irregular closed days due to maintenance.
- 📍 1st floor, 2-4-2 Miyamachi, Fuchu-shi
- 🚶 3min walk from Keio Line Fuchu Sta.
- 👤 35 seats 🚭 Non-smoking

Beer Can Chicken: It is a dynamic  
California-style dish, where a  
whole chicken is roasted on a can  
of beer. Take-out is also available.



A quiet café in a residential  
area where you can have a  
relaxed dining experience.

Our specialty dish "Beer Can Chicken" (¥2,592). The fire show as a finish is quite a sight.





# Recommendations



Teriyaki Chicken Sandwich Lunch Set(¥720). The sandwich bread is ciabatta, which is crispy on the outside and light and fluffy on the inside.



## Café Cinq



A relaxing café where you can enjoy coffee and music played by our big audio system. We roast our coffee beans and offer a complete food menu including various kinds of bread, sandwiches and sweets. We make all our dishes with high-quality ingredients. We also serve breakfast.

☎ 042-362-2341 🕒 7am-7pm 🗺 The 2nd & 4th Wed

📍 1-11-12 Hommachi, Fuchu-shi

🚶 6min walk from JR Fuchuhommachi Sta.

👤 32 seats 🚭 Non-smoking

You can enjoy good sound of full orchestral music or jazz music in the café with the owner's superior collection of audio equipment.



One of the few cafés in Fuchu open from early morning.



Omakase (chef's choice) Course: The chef chooses from 40 different kinds of kushiage of various seafood and seasonal vegetables. Each stick costs ¥173 on average.



## Kushizen



Kushiage is deep-fried food on a stick. We serve kushiage of seasonal ingredients. Each stick is prepared in timely manners so you can enjoy it crispy and fresh. With Omakase (chef's choice) Course, we keep bringing stick after stick until you say "Stop."

☎ 042-360-5228 🕒 5pm-11:30pm 🗺 Tue

📍 1-6-7 Fuchucho, Fuchu-shi

🚶 2min walk from Keio Line Fuchu Sta.

👤 20 seats 🚬 Smoking

There are many customer-pleasing options. For example, you can have a rice ball for extra ¥50 instead of a bowl of rice for the set menu.



Japanese style ambiance. Other than counter seats, horigotatsu (Japanese-style sunken floor) seatings are available.



Maroko Blend coffee (¥500) served with the owner's hand-made cup.



## Coffee Shop Maroko



You will see a red postbox from the old times in front of the shop. The interior is filled with antiques like clocks, lamps, enamel signs etc. Most of the coffee cups, cake plates and flower vases in the shop are all made by the owner, which give you a blissful moment.

☎ 042-361-2464 🕒 11am-7pm 🗺 Tue

📍 Puraudo Fuchu Central Mansion 1st floor, 2-6-1 Fuchucho, Fuchu-shi

🚶 2min walk from Keio Line Fuchu Sta.

👤 31 seats 🚭 Non-smoking

Having started as a milk shop, we serve our Milk Coffee (hot or ice) with plenty of milk for ¥600.



A retro ambiance that reminds us of the good old times in Showa Era.

Waiter/waitress: Please wait to be seated.

👉 [jp]ten-in: sukoshi omachi kudasai

YOU: How long is the wait?

👉 [jp]anata: dono kurai desuka?

Waiter/waitress: About 10 minutes.

👉 [jp]ten-in: juppun kurai desu.

5minutes→[jp]go-fun, 10minutes→[jp]u-pun, 15minutes→[jp]ju-go-fun, 20minutes→[jp]ni-ju-pun, 30minutes. s→[jp]san-ju-pun

Okay, I'll wait.

👉 [jp]wakarimashita.machimasu.

I'll come another time.

👉 [jp]mata kimasu.

Can I use my credit card?

👉 [jp]kurejitto ka-do wa tukaemasuka?

Yes, you can.

👉 [jp]ten-in: hai, tsukaemasu.

No, you can't.

👉 [jp]ten-in: iie, tsukaemasen.



Galettes made with organic buckwheat flour from Fukui Prefecture (Prosciutto, egg, cheese, and salad)(¥1,480). Chef's choice salad(¥780).



## Seiseikyō



A chic café with a peaceful atmosphere. It also has a gallery and a variety store. Along with a cafe and alcohol menus, there are great daily lunch choices. This café is great for all occasions.

☎ 042-334-8208 🕒 11:30am-8pm LO/Fri, Sat & the day before holidays 11:30am-10pm LO 🗺 Wed

📍 1-26-6 Wakamatsucho, Fuchu-shi

🚶 5min walk from Keio Line Tama Reien Sta.

👤 28 seats 🚭 Non-smoking

With a very comfortable atmosphere, you can enjoy a relaxing time. We guarantee that it will become a precious spot for you, where you can spend time in ways you like.



High-speed wi-fi network available.



Four different kinds of pizza are very popular including pizza with prosciutto and arugula(¥1,200).



## CAFFE & BAR ipini



Café bar, where you can enjoy wine, Spumante(sparkling wine) and beer along with Italian food. Great lunch menu with daily pasta course meal, pizza or sandwiches. Coffee and cakes are served all day.

☎ 042-302-2100 🕒 11am-8pm

🗺 Mon 2-30-4 Miyamachi, Fuchu-shi

🚶 5min walk from Keio Line Fuchu Sta. 👤 35 seats

🚭 Smoking and non-smoking sections separated.



Mediterranean atmosphere. Comfortable sofa seats and counter seats.

We use fresh local vegetables and especially recommend our homemade salsiccia (Italian sausage) and broccoli.



## Steak Stadium



Enjoy Aussie beef of high quality in different ways including lean rump steak as a healthier option; aitchbone, which is a rare part, moist and tender sirloin (limited servings), home ground 100% beef hamburger steak.

☎ 042-319-1909 🕒 11am-2pm, 5pm-10pm

🗺 Details on closed days on the website

📍 Terrace Obara 1st floor, 2-27-16 Kotobukicho, Fuchu-shi

🚶 6min walk from JR Kita-fuchu Sta. 👤 26 seats 🚭 Non-smoking



Spacious setup of tables and counter seats.

Our steaks will be served sizzling on a stylish traditional Japanese Nanbu skillet, made by Oigen, a brand established back in 1852.



# Soba



Fuchu Moriage Soba(¥972), Soba with shredded daikon radish on 2 bamboo trays and Tempura.

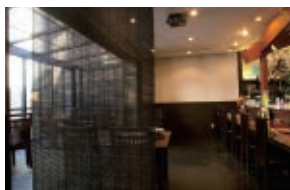


Ten-Seiro(¥1,450). You can also enjoy tempura, sashimi, and à-la-carte.

## Hoteiya Handmade Soba Shop

It is Soba Izakaya in residential area. If you order Ten-Seiro, you can enjoy crispy tempura and tasty soba. There are many kinds of Japanese sake and shochu.

☎ 042-361-2624 🕒 11am-3pm, 5pm-8:30pmLO  
📅 Mon/the 1st & 3rd Tue 🕒 2-2-20 Miyamachi, Fuchu-shi  
🚶 2min walk from Keio Line Fuchu Sta.  
👥 32 seats 🚭 Non-smoking during lunch time



Stylish ambience with seats on the glass terrace.

At night you can enjoy Yorusoba, which can include Japanese sake, shochu, fruit wines and à-la-carte. You must eat soba to call it a night!

## Fuchu Sunaba soba Shop

Fuchu Sunaba is a traditional and cozy soba shop. You can enjoy many kinds of seasonal menus and à-la-carte like Mitaka Sunaba Soba Shop. You can also enjoy popular Soba Shochu with soba hot water.

☎ 042-361-2323 🕒 11am-9pm 📅 Tue & the 3rd Wed  
📍 1-10-2 Hommachi Fuchu-shi  
🚶 2min walk from JR Fuchuhommachi Sta.  
👥 48 seats 🚭 Non-smoking

The shop owner trained for 10 years in Sunaba, which has a long history like Sarashina and Yabu Soba Shop, and became independent by setting up a branch. Please enjoy the traditional taste.



There are tables and Tatami rooms.



Kamo-Seiro, using Japanese duck meat(¥1,350). Soba flour directly sent from soba field is used for soba.

## Kiyoshian Handmade Soba Shop

You can enjoy rich taste of soba. The shop owner directly gets soba flour from soba field which he is co-funding in Asahikawa Etanbetsu in Hokkaido. If you order Kamo-Seiro, you can enjoy tasty soba soup with duck meat.

☎ 042-361-9523 🕒 11am-7pmLO  
📅 Wed 🕒 1-22-1 Miyamachi, Fuchu-shi  
🚶 2min walk from Keio Line Fuchu Sta.  
👥 26 seats 🚭 Non-smoking



Near Keio Line Fuchu Sta., home-like atmosphere.

Etanbetsu is mountainous region in Asahikawa and its temperature difference can be 70°C. The strict environment raises good soba.

Can I have hot soba?  
☎ [jp]atataikai soba wo onegaishimasu.  
Can I have cold soba?  
☎ [jp]tsumetai soba wo onegaishimasu.

Simple hot soba→[jp]kake soba  
Simple cold soba→[jp]mori soba/seiro  
Soba with tempura→[jp]tempura soba  
Soba with raw egg→[jp]tsukimi soba  
Soba in hot soup with duck meat→[jp]kamo nan-ban  
Chicken and egg bowl→[jp]joyako don  
Bowl of rice with pork cutlet mixed with egg on top→[jp]katsu don



Fuchu Moriage Soba(¥1,000). You can enjoy big Kakiage, mixed-vegetable tempura.

## Furuta Homemade Soba Shop

The shop owner, who loves soba and Fuchu, makes soba by hand everyday. Simple and rich taste, you can eat everyday. We also recommend Oyakodon, chicken and egg bowl, specially chosen Japanese chicken and egg are used.

☎ 042-362-7304 🕒 11am-8:40pmLO/Sun 11am-2:40pmLO  
📅 None 🕒 3-1-25 Miyoshicho, Fuchu-shi  
🚶 3min walk from Keio Line & JR Bubaigawara Sta.  
👥 45 seats 🚭 Non-smoking



Cozy and traditional soba shop

"Fuchu Moriage Soba" is a menu to cheer up Fuchu. "Moriage" means "cheer up", you can feel love for Fuchu in its name!



Kakiage-Seiro (¥1,400), freshly fried kakiage.

## Yoshiki soba shop

You can enjoy both fine soba which tastes so good and thick soba made of 100% soba flour. There are many kinds of à-la-carte such as grilled duck heart and Japanese sake which goes perfectly with it.

☎ 042-362-6848 🕒 11:30am-2pmLO  
📅 Mon & Thu 🕒 3-2-2 Bubaicho, Fuchu-shi  
🚶 3min walk from Keio Line & JR Bubaigawara Sta.  
👥 15 seats 🚭 Non-smoking



Stylish and comfortable place.

Homemade soba. We recommend Nishoku-Seiro, which you can enjoy both fine seiro-soba and thick soba.

## Ishikawa Homemade Soba Shop

Local soba shop with over 70 years history. The shop has nice entrance and modern interior. You can enjoy homemade soba made from soba seeds from Hokkaido and grind with millstone.

☎ 042-361-7961  
🕒 11:15am-3pm, 5pm-9pmLO  
📅 Mon  
🕒 1-14-3 Miyoshicho, Fuchu-shi  
🚶 10min walk from Keio Line Fuchu Sta.  
👥 52 seats  
🚭 Non-smoking

Fuchu Moriage Soba(¥1,300), Morisoba with tempura.

We also recommend homemade Inaka-soba, made of 100% soba flour and like Fettuccine.



There are tables and Tatami rooms.





# Ramen

## Mensoken Kurenai Ramen Shop



Its concept is "a laboratory which creates ramen". Originally blended domestic flour is used for noodle, and you can enjoy tasty miso soup with red and hot miso.

- ☎ 042-361-7792 🕒 11am-10:30pm 🚗 None
- 📍 LE SIGNE 1st floor, 1-100 Miyamachi, Fuchu-shi
- 🚶 1min walk from Keio Line Fuchu Sta.
- 🍽 23 seats
- 🚭 Non-smoking



Directly connected to Fuchu Station.



Kurenai Ramen(¥800) is standard hot and tasty ramen. You can add soft boiled egg (¥100) and pork (¥190).

## Tombi Ramen Shop



It's such a popular ramen shop in Fuchu. Their soup's broth is made from seafood and meat. You can have an extra serving for free, so it is good value for the money.

- ☎ 042-334-7771 🕒 11:30am-11:30pm 🚗 Tue
- 📍 Takahashi Bldg 1st floor, 1-5-6 Fuchicho, Fuchu-shi
- 🚶 1min walk from Keio Line Fuchu Sta.
- 🍽 7 seats
- 🚭 Non-smoking



Only 7 counter seats.



Tai-Soba (sea bream ramen)(¥700), chashu(roasted pork) and fried tofu are roasted on a portable clay cooking stove.

## Lion Ramen Shop Fuchu Main Branch



It is a very popular ramen restaurant in Fuchu since 1981. Its rich soup, made from the best ingredients and homemade noodle, is a perfect match. You can have takeout of special gyoza (Japanese dumpling).

- ☎ 042-360-0502 🕒 11am-10:30pm 🚗 None
- 📍 Kururu 1st floor, 1-50 Miyamachi, Fuchu-shi
- 🚶 1min walk from Keio Line Fuchu Sta.
- 🍽 24 seats
- 🚭 Non-smoking



There are counter seats and 2 tables for 4 people.



Lion Ramen(¥800). You can enjoy tasty soy sauce-based soup. Fine strips of raw onion look like whiskers of a lion.

Do you have dumplings?

🍡(j)gyoza wa arimasuka?

Do you have beer?

🍺(j)bi-ru wa arimasuka?

Water, please.

🍻(j)jomizu wo kudasai

ken bai ki(券売機)=a ticket machine

oomori(大盛り)=a large portion

toku sei(特製)=special

aji tama(味玉)=aji-tama, a flavored egg

kae dama(替え玉)=a noodle refill/ an extra portion of noodles

## Eiji Ramen Shop



This is a Jiro-kei Style shop which offers a large portion of noodles. The super thick springy noodles and well-cooked exquisite chashu that falls apart in your mouth leave you craving for more. Extra veggies, oil and karamage soup (heavier soup) are available on your request.

- 🚗 Private 🕒 11am-2:30pm, 5:30pm-8:30pm or closed when sold out.
- 🚗 Sun, irregularly on Sat & holidays (Check Twitter@ra\_meneiji)
- 📍 3-1 Harumicho, Fuchu-shi
- 🚶 15min walk from Keio Line Fuchu Sta.
- 🍽 11 seats
- 🚭 Non-smoking



A 15-minute walk from the Keio Line Fuchu Sta. but always bustles with customers.



Ramen with two slices of chashu(¥760). You'll be overwhelmed with the piled up toppings.

Shiru-Nashi Ramen (ramen without soup) is available with extra ¥130. It's fun to see how ramen transforms into a totally different dish when prepared with the toppings specially made for this menu.



Tokusei-Hibiki topped with 3 slices of chashu and a flavored egg (¥850).

## Hibiki Ramen Shop



The simple soy sauce-flavored soup made of chicken and seafood broth is orthodox and unbelievably savory. The noodles are homemade with whole wheat in it. The soup sticks well with the thin straight noodles.

- 🚗 Private 🕒 11:30am-3pm or closed when soup has run out.
- 🚗 Tue 🕒 1-58-5 Shimmachi, Fuchu-shi 🕒 20 min walk from the Keio Line Fuchu Sta., or take a bus bound for JR Kokubunji Station South Exit via To-Hachi Doro or for JR Musashi-koganei Station South Exit via Gakuen Dori, get off at "Gakuen Dori Yubinkyoku" and walk one minute
- 🍽 10 seats
- 🚭 Non-smoking



It is a small shop with only ten counter seats installed but super popular!

We can recommend their ramen to all generations for its additive-Free and preservative-Free ingredients.

## Men-ya Moro Ramen Shop



Their iconic menu is the umami-rich Salt-Flavored Ramen. The soup is made of 'the triple broth' of chicken, sea food and mushrooms. The salt saurce to combine with the soup also absorbed well the umami of shiitake and kombu (kelp). This ramen is the crystallization of umami!

- ☎ 042-319-0963 🕒 11am-11pm/Fri & Sat 11am-3am
- 🚗 Tue 🕒 3-9-10 Miyoshicho, Fuchu-shi
- 🚶 6min walk from Keio Line & JR Bubaigawara Sta.
- 🍽 13 seats
- 🚭 Non-smoking



The table seats make women feel easy to visit.

They also serve Salt-Flavored Tantanmen (Chinese-style spicy noodles), Niboshi (dried small sardine)-Flavored Ramen, Soy Sauce-Flavored Ramen.





# Japanese Cuisine



Una-ju Jo (high-quality grilled eel with rice) (¥4,200)  
(Rice served separately).



Tempura-Udon Ume including kakiage (shredded vegetable tempura) and pork tempura (¥760).

## Heji-no-o-Udon

MAP  
P.29 C-2

The noodles made with carefully selected flour are thicker than the average and chewy. They have their number one bowl, Niku-Jiru Udon (udon in hot soup topped with meat), Mori (udon you eat dipping in the cold soup) Bukkake (udon in hot soup), etc. All menus have sizes from XS to XL so that you can choose according to your appetite and finance.

- ☎ 042-354-8555
- 🕒 11am-3pm, 5pm-10pm/Sat, Sun & holidays 11am-10pm
- 📍 Thu 3-3-1 Midoricho, Fuchu-shi
- 🚶 4min walk from Keio Line Higashi-fuchu Sta. 📺 48 seats
- 🚭 Non-smoking



Along Koshu-kaido Ave. Easy to find with the conspicuous building.

Freshly deep-fried tempura served with udon is excellent! At night, it's also good to have tempura with sake, and finish the meal with springy texture udon.

## Uomoto Japanese Cuisine Restaurant

MAP  
P.31 D-1

From grilled eel to sashimi and tempura, you can try a variety of authentic Japanese dishes at this Japanese-style restaurant. The noteworthy grilled eel is meltingly tender. The special secret sauce is the key of this relish.

- ☎ 042-362-2029 🕒 11am-3pm, 5pm-9pm
- 📅 Mon (Open if a national holiday falls on Mon, closed the following day)
- 📍 2-14-14 Fuchucho, Fuchu-shi
- 🚶 10min walk from Keio Line Fuchu Sta.
- 📺 40 seats
- 🚭 Non-smoking



A relaxing dinner with a tasteful garden view. Suitable for celebration and other occasions.

Quiet and relaxing atmosphere.



Take a pleasure in the Edo-Mae style sushi fastidiously prepared!

## Ryu-no-Sushi

MAP  
P.30 B-1

Located at the end of Kokusai Dori Ave. the railway track from Fuchu Station. The must-try high-graded sushi is recommended in the ¥3,900 Course or Omakase Nigiri (the chef's choice sushi set). The highly developed techniques and the artisanship keep fans attracted.

- ☎ 042-354-0357
- 🕒 5:30pm-10pmLO/Sat, Sun & holidays 12pm-2pmLO, 5:30pm-8:30pmLO
- 📅 Mon 1-18-6 Miyamishicho, Fuchu-shi
- 🚶 5min walk from Keio Line Fuchu Sta. 📺 20 seats
- 🚭 Non-smoking



Japanese modern interior

The king of sushi toppings is tuna! Any parts of the fish, akami or toro (fatty meat) they serve will surely satisfy you. Savor the taste and indulge yourself in it.

Nigiri-zushi, please. / A hand-formed one, please.

🗨️ [jp]nigiri de onegai shimasu.

I'd like to have some snacks for drink.

🗨️ [jp]tsumami kara onegai shimasu.

No wasabi, please.

🗨️ [jp]wasabi nuki de onegai shimasu.

What kind of fish is this?

🗨️ [jp]kono sakana wa nan desuka?

Which sake do you recommend for this dish?

🗨️ [jp]kore ni au osake wa arimasuka?



Nigiri Set Takumi (Hand-Formed Sushi Set) (¥702),  
Atsuyaki-Tamago (Thick Japanese Style Omelet) (¥162).

## Taisei Conveyor Belt Sushi Fuchu Flagship Restaurant

MAP  
P.31 C-2

Single Nigiri ¥150 (¥162 incl. tax) (bluefin tuna, long-finned tuna, salmon, etc.); Today's Sushi Set of White Meat Fish and Maguro-Zukushi (all sorts of tuna sushi plate) ¥540 each. Kids are welcome. The tables are comfortable for families.

- ☎ 042-369-8899 🕒 11am-9:30pm
- 📅 Open when LE SIGNE shopping mall is open
- 📍 LE SIGNE 1st floor, 1-100 Miyamachi, Fuchu-shi
- 🚶 1min walk from Keio Line Fuchu Sta.
- 📺 58 seats
- 🚭 Non-smoking



The counter set in the center of the restaurant.

They make an omelet with the carefully made dashi and prepare one every time just upon order. Their omelet fans call it the best sweet of the sushi restaurant.



Whole Ise-Ebi Lobster Sashimi (Reservation required)  
It will surely provide a festive atmosphere to a celebration.

## Burapi Japanese Cuisine Restaurant

MAP  
P.31 C-2

As the name of the restaurant comes from the word 'bura-tto' meaning 'drop in casually' in Japanese, they literary offer meals on the theme of 'amusing Japanese dishes' so that people can feel easy to try authentic Japanese cuisine. They prepare dishes bringing out the taste of ingredients such as wild fresh fish, organic veggies from Yatsugatake, etc.

- ☎ 042-405-0800 🕒 5pm-11:30pm
- 📅 Sun
- 📍 Fuji Kaikan Bldg B1, 2-3-6 Miyamishicho, Fuchu-shi
- 🚶 3min walk from Keio Line Fuchu Sta.
- 📺 54 seats
- 🚭 Smoking



You can view how meals are prepared over a beautiful single-piece wooden counter.

They have a healthy collection of season-limited unpasteurized sake from all over Japan including very rare ones that are usually sold in limited areas.

## Aji-Dokoro Sato Japanese Cuisine Restaurant

MAP  
P.30 A-2

For lunch, there are Today's Special Set, fresh sea food bowl and so on. At night, they offer a wide range of à-la-carte dishes; Sashimi of the season, grilled dishes, etc. They go well with carefully selected sake. The restaurant also boasts a variety of dishes of Hisamitsu Chicken (the Saga Prefecture's brand chicken).

- ☎ 042-351-9716 🕒 11:30am-1:30pmLO or closed when rice has run out/5:30pm-10:30pmLO
- 📅 Mon 2-18-2 Katamachi, Fuchu-shi
- 🚶 2min walk from Keio Line & JR Bubaigawara Sta.
- 📺 35 seats
- 🚭 Non-smoking



Go up narrow stairway to the restaurant.



Sea food bowl topped with seasonal 11 to 15 kind of fresh sea food (lunch time only, ¥1,800).

You can also order half size but good filling sea food bowl (¥980).





# Western Style & Grilled Meat



3 selected dinner courses, ¥6,000, ¥8,000 and ¥10,000.  
(Image is for illustration purposes).



Dinner course for Hamburger Steak made with Wagyu (¥2,200).

## Western Cuisine Restaurant Iseya

MAP  
P.31 C-1

The restaurant is operated by a meat shop in business for 65 years. It is noted for excellent beef dishes including high quality Wagyu at a reasonable price. The chef has trained his skill in a hotel and is good at homemade demiglace sauce.

☎ 042-362-7623 🕒 11:30am-2:30pm, 5:30pm-8:30pmLO  
📍 Thu 🏠 Onda Bldg 2nd floor, 1-7-3 Fuchucho, Fuchu-shi  
🚶 1min walk from Keio Line Fuchu Sta. 🍽️ 26 seats  
🚭 Non-smoking



A cozy little restaurant popular with customers.

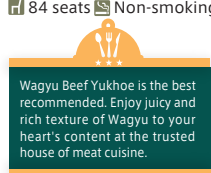
14 kinds of dishes in the menu are available for lunch! The recommended dish is Pilaf Steak. You can enjoy the rich flavor of beef only available in the beef shop owned restaurant.

## Moranbong Restaurant Flagship Store

MAP  
P.31 C-1

"Jang" is a nation-wide brand for the sauce of yakiniku (BBQ) originated in Fuchu manufactured by Moranbon, and marked 40th anniversary in 2019. You can enjoy the authentic taste in the restful atmosphere at their own restaurant.

☎ 042-365-4121 🕒 12pm-1:30pmLO, 5pm-9:30pmLO /  
Sat, Sun & holidays 4pm-9:30pmLO  
📍 Tue 🏠 Sakura Shokuhinkan 4th floor, 1-7-2 Fuchucho, Fuchu-shi  
🚶 1min walk from Keio Line Fuchu Sta.  
🍽️ 84 seats 🚭 Non-smoking



Wagyu Beef Yukhoe is the best recommended. Enjoy juicy and rich texture of Wagyu to your heart's content at the trusted house of meat cuisine.



Semi-private room is also available.



Why not try First-class Kalbi(¥2,400)?

## Jujuhut Korean Barbecue Restaurant Fuchu Flagship Store

MAP  
P.31 C-1

The restaurant serves high quality Wagyu yakiniku (BBQ) and homemade Korean food. It offers first-class kalbi(short ribs) of Japanese beef and handmade kimchi. Good location with just 1 minute from the station.

☎ 042-360-1599  
🕒 5pm-1am / Sun & holidays 5pm-12:30am  
📍 Thu 🏠 Eiwa Bldg 1st floor, 1-6-6 Fuchucho, Fuchu-shi  
🚶 1min walk from Keio Line Fuchu Sta.  
🍽️ 36 seats 🚭 Non-smoking



You can sit back and relax in hori gotatsu.  
(Japanese style foot warmer built into the floor)

Kimchi is also homemade, soaked in spices with more than 10 ingredients including vegetables, fruits, salted squid and 3 kinds of chilis.

What kind of meat is this?  
☞ [jp]kore wa nan no niku desuka?  
Does it include pork meat?  
☞ [jp]buta niku wa haitte imasuka?

Pork meat → [jp] buta niku  
Beef meat → [jp] gyū niku  
Chicken meat → [jp] tori niku  
Lamb meat → [jp] ramu niku  
Duck meat → [jp] kamo niku

Could I have a wine list?  
☞ [jp]wain risuto wa arimasuka?  
Could I have some more?  
☞ [jp]jokawari wo kudasai.



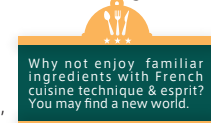
The Grilled Herb Pork Loin with Bone from Iwate is a signature dish, which you may want to eat a lot.

## Bistrot La Chauve

MAP  
P.30 A-3

The chef has trained his skill in a famous restaurant in Tokyo and South France and opened his own restaurant in Bubaigawara. It has wide variety of dishes from slow food to seasonal dishes. The Grilled Herb Pork Loin with Bone from Iwate(¥2,700) is an appealing dish with its rich flavor of meat cooked into rose color.

☎ 042-367-1071 🕒 11am-1:30pmLO, 6pm-9pmLO /  
Sat, Sun & holidays 11:30am-2pmLO, 6pm-9pmLO 📍 Wed  
📍 Plaisir Bldg 1st floor, 1-27-4 Bubaicho, Fuchu-shi 🚶 4min walk from Keio Line & JR Bubaigawara Sta.  
🍽️ 16 seats 🚭 Smoking and non-smoking sections separated.



Why not enjoy familiar ingredients with French cuisine technique & esprit? You may find a new world.



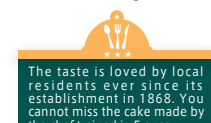
The bistro is a cozy refuge in a residential area near the station.

## Monamour Seifudo

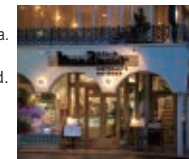
MAP  
P.31 C-2

The 1st floor is the confectionery shop and cafe, and the second floor is the Italian restaurant. The dishes with fresh seafood transported by air from Kanazawa everyday are very popular. You cannot miss the homemade cake specialty of Monamour. It offers the confectionary named after Fuchu city, such as Musashi Kokufu Roll Cake.

☎ 042-361-9774 🕒 10am-10pm 📍 None  
📍 2-1-1 Miyamachi, Fuchu-shi  
🚶 5min walk from Keio Line Fuchu Sta.  
🍽️ 68 seats 🚭 Smoking and non-smoking sections separated.



The taste is loved by local residents ever since its establishment in 1868. You cannot miss the cake made by the chef trained in France.



Established in 1868, started the business as a Japanese-style confectionary shop.



Pescatore (seafood with tomato source) (¥1,400).  
You can choose dessert from over 30 kinds of cakes.



Chicken Comptoir (¥930) and  
Eggplant Salad with Oli Sardine (¥680).

## Comptoir

MAP  
P.30 A-2

Its original menu is truly homemade, including Vacuum Cooked Eggplant Salad, Original Pizza and its specialty Chicken Comptoir. You can also enjoy 20 kinds of wine during dinner time.

☎ 042-334-7353 🕒 11:30am-2pm, 5:30pm-10pmLO  
📍 Tue 🏠 1-18-1 Katamachi, Fuchu-shi  
🚶 5min walk from Keio Line & JR Bubaigawara Sta.  
🍽️ 10 seats 🚭 Smoking



The chic and fashionable restaurant was selected as a location for TV drama series. Enjoy the food made with love!



A cozy little restaurant with seats only at the counter.





# Cafe & Sweets, Bakery



The high ceiling, which is the standard style for kura(warehouse) gives a solemn atmosphere.

## Kura Cafe

The historical architecture of kura(warehouse) from the end of the Edo period was kept even after its renovation. Sake Lees Late is unique to this cafe. There are various deserts such as: Cheese Cake and Shaved Ice.

- ☎ 080-9170-3954
- 🕒 10:30am-6pm Wed & Sun
- 📍 4-2-1 Miyamachicho, Fuchu-shi
- 🚶 7min walk from Keio Line Fuchu Sta.
- 👤 17 seats
- 🚭 Non-smoking



Sake Lees Late (¥600),  
Cake (¥400)

The liquor shop is just beyond the restaurant. You can buy gifts after enjoying cafe.



Easily found location, which is the intersection of Fuchu-kaido Ave. and Kyu-koshu-Kaido Ave.



Counter seating suitable for single customers in front of large windows.

## Kogumaya Coffee shop

The cafe opened in 2012 serves an original roasted coffee. It also offers homemade dishes, ice cream and confectionary from the shops near Fuchu city.

- ☎ 042-306-8580 🕒 11:30am-6pm, 7pm-9:30pm/ Sun & holidays
- 🕒 12pm-5:30pm \*LO is 30 minutes before the closing.
- 📅 Tue, the 1st & 3rd Mon 🕒 11-18 Hommachi, Fuchu-shi
- 🚶 8min walk from Keio Line Fuchu Sta.
- 👤 22 seats
- 🚭 Non-smoking
- \*the ashtray available outside



Coffee Jelly Parfait (¥700).

The 1st floor is seating with table, and the 2nd floor is seating in raised floor and counter. All comfortable and relaxed seats.



Stylish and fashionable exterior.

I'd like a non-smoking seat, please.

☞ [jp]kin en seki de onegaishimasu.

I'd like a window seat, please.

☞ [jp]madogiwa de onegai shimasu.

How much is this? / How much is the total?

☞ [jp]kore wa ikura desuka? [jp]zenbu de ikura desuka?

Please wrap them separately.

☞ [jp]betsu-betsu ni tsutsunde kudasai.

I would like to buy souvenirs.

☞ [jp]omiyage wo kaitai desu.



Baguette Antique (above) and Noix Raisin (middle right) are among the wide array of items.

## Le Petit Monde

MAP  
P.28 B-2

This store has a very unique antique atmosphere. 50 kinds of bread are baked here and are available to buy. It's fun to find unique bread like Noix Raisin, which has dough with mashed potatoes and walnuts & raisins.

- ☎ 042-319-1445 🕒 Open from 11am (open while supplies last)
- 📅 Mon & Tue 📍 1-47-1 Honshukucho, Fuchu-shi
- 🚶 2min walk from JR Nishifu Sta.
- 🚭 Non-smoking

Baguette Antique is a must-try item that uses ground flour from Kyushu and takes a long time to carefully bake.



A variety of items are nicely arranged inside the store.



Lumiere (¥580)

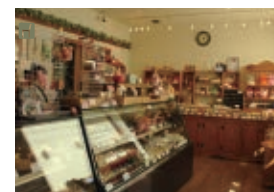
Fuchu Okashi Sanpo is ¥2,000 for a set of 10 pieces.

## Lumiere

MAP  
P.30 A-2

The store was opened by chef Iizuka, who is from Fuchu City and has won multiple prizes in contests, with the passion to open a store in his hometown. Each and every piece of meticulously and cordially made confectionery offered by the store is of excellent quality.

- ☎ 042-351-0221 🕒 10:30am-8:30pm Tue
- 📍 3-1-23 Miyoshicho, Fuchu-shi
- 🚶 3min walk from Keio Line & JR Bubaigawara Sta.
- 🚭 Non-smoking



Offers sweets made from meticulously selected ingredients.

The sweet named "Fuchu Okashi Sanpo," which embodies the streets of Fuchu City, is hugely popular.



Hibikorekuro Dora  
(¥180)

Musashino Nisshi  
Chocolate (¥140),  
white Chocolate (¥160)

## Aoki-ya Confectionery Keyaki-namiki Street branch

MAP  
P.31 C-2

A long-established store with 125 years' history offers sweets made from elaborately selected ingredients and water from the Tanzawa water system. Popular items include Hibikorekuro Dora, which uses Sahoro, large grain beans from Hokkaido. The sweet also uses brown sugar from Okinawa for its outside layer, which is baked with a rich flavor.

- ☎ 042-362-3006 🕒 10am-8pm None
- 📍 Folis Bldg 1st floor 104,1-14-1 Miyamachi, Fuchu-shi
- 🚶 3min walk from Keio Line Fuchu Sta.
- 🚭 Non-smoking



Offers a wide variety of Japanese confectionery such as manju bean-paste bun and monaka, bean-jam filled wafers.

Skilled confectioners with ample knowledge and experience produce the same quality products every day no matter what the weather conditions may be. Try the homemade bean-paste simmered by the professional confectioners!





# Japanese Style Bars



5-kind assorted sashimi (¥2,850), 10 skewers of assorted yakitori (¥1,350).

## Taishu Izakaya Taruhei



Taruhei has offered yakitori with traditional sauce, motsuni Japanese tripe stew, and seasonal dishes for half a century. The lively atmosphere inside symbolizes the exact image of Japan. There are 15 kinds of shochu distilled spirits and 9 kinds of Japanese sake on the menu. It would be interesting to try different labels.

☎ 042-360-0103 🕒 4pm-12am 🚬 Not fixed  
📍 2-3-9 Miyanishicho, Fuchu-shi  
🚶 1min walk from Keio Line Fuchu Sta.  
👥 120 seats 🚬 Smoking



Spacious store can accommodate up to 60 customers.

The store boasts excellent yakitori. All its making process is done by hand every day from preparation of ingredients to skewering. Craftsmen grill them on a charcoal fire and keep them juicy.



Enjoy buckwheat bun with special starchy sauce for ¥800 in the store with a hideaway atmosphere.

## Waraku Yoitake



Waraku Yoitake offers original Japanese-style dishes made from carefully selected ingredients and tasty local sake. You can enjoy meticulous dishes, especially fresh fish shipped from various fishing ports. A quiet atmosphere makes it easier for solo customers to visit.

☎ 042-369-3241 🕒 5:30pm-10:30pmLO  
📍 Wed 📍 West A Bldg 1st floor, 1-17-3 Miyanishicho, Fuchu-shi  
🚶 3min walk from Keio Line Fuchu Sta.  
👥 25 seats 🚬 Smoking and non-smoking sections separated.



The counter is available for customers eating alone casually.

Owner Hideo Takeuchi served as a chief chef at Chinese restaurants, Kyo kaiseki restaurants, Meiji Memorial Hall and hotels.



Offers authentic dishes such as marbled meat of Kuroge Wagyu beef (¥1,400). Original Japanese sake sent directly from Kuramoto Sake Breweries are available as well.



## KIZUNA DINNING Fuchu branch

This bar is meticulous about "bonds" which offer a glimpse into the ingredients. You can enjoy bonito directly shipped from Kochi Prefecture, fresh fish from the Toyosu fish market, Agu pork directly shipped from designated farms in Okinawa, and bluefin tuna which is carefully selected by connoisseurs.

☎ 042-364-1194 🕒 5pm-11:30pmLO 📍 Mon (Open if a national holiday fall on Mon, closed the following day)  
📍 1-11-1 Miyanishicho, Fuchu-shi  
🚶 1min walk from Keio Line Fuchu Sta.  
👥 50 seats 🚬 Smoking



Its convenient location in a busy district offers easy access from the station.

Fresh water shrimp and sweet fish, fresh fish caught in the Shimanto River such as bonito, can be relished in the local style.

Is smoking permitted?  
☞ [jp]tabako wa suemasuka?  
Can I get an ash tray?  
☞ [jp]haizara wo kudasai.  
What's today's special?  
☞ [jp]kyo no osusume wa nan desuka.

I'll have that, too.  
☞ [jp]are to onaji mono wo kudasai.  
Check, please.  
☞ [jp]okaiki wo onegai shimasu.



3-kind assorted sashimi for ¥1,058 goes well with a variety of local sake labels and shochu distilled spirits.

## Dadaratei



This retro bar has a classic atmosphere of the Showa Era (1926-1989) with nostalgic film signs and posters, quaint furniture and tin-sheet toys as well as popular songs from the Showa period. The pub offers an izakaya-style menu full of casual, homemade dishes.

☎ 042-366-9177  
🕒 11:30am-1:30pmLO, 5pm-10pmLO/Sat&Sun 5pm-10pmLO  
🚬 Not fixed  
📍 1-11-8 Miyamachi, Fuchu-shi  
🚶 1min walk from Keio Line Fuchu Sta.  
👥 25 seats 🚬 Smoking



Ultraman goods, Godzilla posters and much more bring you back in time to the 30s of the Showa Era!

Renovated after a traditional Japanese-style house.



Salt-seared yellowtail from Kagoshima is a must-try dish.

## UOYA Shigezo



Fresh fish directly shipped from Hakodate, Sakaiminato, and Kagoshima is the bar's specialty. Check out the most recommended specialty of the day on the menu. More than 20 Japanese sake labels are always available for drinking from small glasses.

☎ 042-306-7200 🕒 5pm-11pmLO / Sun & holidays 5pm-10pmLO  
📍 Mon 📍 2-6-1 Fuchucho, Fuchu-shi  
🚶 2min walk from Keio Line Fuchu Sta. 👥 30 seats  
🚬 Non-smoking  
\*the ashtray available outside



In addition to fish dishes, vegetables that are locally produced in Fuchu and the fresh sour using lemons from Setoda are popular too!

So close to Fuchu Station with bright and lively atmosphere.



Wide variety of dishes available besides grilled dishes such as Japanese tripe stew (¥432).

## Ogiya



This yakitori bar is located in an entertainment district with many bars near Bubaigawara Station. It's a rare bar that retains a vivid atmosphere of a classic casual pub. Voluminous yakitori and classic beer-flavored Hoppi drinks are a go-to combination.

☎ 042-368-2036 🕒 5:30pm-11pmLO 📍 Mon  
📍 2-21-17 Katamachi, Fuchu-shi  
🚶 1min walk from Keio Line & JR Bubaigawara Sta.  
👥 40 seats 🚬 Smoking



Offers a wide variety of food besides grilled dishes. Recommended dishes that frequently change are full of seasonal ingredients.

The store, always full of liveliness, is Bubaigawara's oasis.





A cozy and relaxing restaurant. Carefully selected wines from around the world ¥2,800—. Try wine of the month!



Toshiba and Suntory athletes visit sometimes.

## Irish Pub Second Five Eighths

MAP  
P.31 D-1

A typical pub with snacks, Japanese appetizers etc. Rugby jerseys and athletes' autographs are on display.

- ☎ 042-203-1033
- 🕒 11am-2:30pmLO, 5pm-11:30pmLO
- 📅 Tue 📍 Proud Fuchu Central 1st floor, 2-6-1 Fuchicho, Fuchu-shi 🚶 4min walk from Keio Line Fuchu Sta.
- 👥 30 seats 🚭 Non-smoking \*the ashtray available outside



Six screens are in the Pub! Six Olympic games in real time!

Beef tendon curry lunch. A set with a soup, salad, dessert and free-refill drinks costs only ¥500!

## BRASSERIE BEGA

MAP  
P.31 C-2

This is a cozy spacious restaurant of Western-influenced dishes. Enjoy chef's recommendations with selected import wines.

- ☎ 042-368-2453 🕒 11am-3pm, 5pm-2am / Fri & Sat 5pm-3am/Sun 3pm-12am
- 📍 None 📍 Kururu 1st Floor, 1-50 Miyamachi, Fuchu-shi
- 🚶 1min walk from Keio Line Fuchu Sta.
- 👥 45 seats
- 🚭 Non-smoking during lunch hours

Value lunch sets are also available on Sundays and holidays. Happy hour till 7pm everyday!



Close to the station but quiet and relaxing atmosphere.



Variety of rare beers can be tasted. Check them out!

## Beerhall BOON

MAP  
P.30 A-2

Come to try almost 100 kinds of beers from all over the world and international dishes. This is a party atmosphere bar to play darts and watch sports games on a massive 100-inch screen.

- ☎ 042-335-6826 🕒 5pm-1am
- 📅 Sun 📍 2-21-16 Katamachi, Fuchu-shi
- 🚶 1min walk from Keio Line & JR Bubaigawara Sta.
- 👥 50 seats
- 🚭 Non-smoking



Enjoy pairing unique beers and food!

Many promotions; All-you-can-drink, happy hours, etc.

Please make me a cocktail you recommend.  
☎ [j]p]osusume no kakuteru wo tukutte kudasai.

What's your favorite team?  
☎ [j]p]dono chi-mu wo oen shite imasuka?  
Who is your favorite player?  
☎ [j]p]dono senshu ga suki desuka?  
Let's cheer together!  
☎ [j]p]issho ni oen shimashou!



Homemade Margherita Pizza(¥1,100).

## Paso a Paso, Multinational Bar

MAP  
P.31 C-1

Mexican, German, Indian, Italian...multinational menu changes every two weeks. All drinkers sit at the counter. Their homemade pizza is a must try after drinking.

- ☎ 042-364-8639 🕒 5:30pm-9:30pmLO
- 📅 Tue & the 3rd Wed
- 📍 Park Road 102, 1-27-1 Fuchicho, Fuchu-shi
- 🚶 4min walk from Keio Line Fuchu Sta.
- 👥 10 seats 🚭 Smoking



Bar-restaurant with brick walls.

Homemade pizzas can be taken out (Full-size only) (¥1,200)



Wide variety of dishes to pair with wine.

## Bacchanalia

MAP  
P.31 D-1

French cuisines from traditional to modern. Enjoy pairing food and wine from the wide range of choices.

- ☎ 042-306-6964
- 🕒 11:30am-2pm, 5pm-12am 📍 None
- 📍 2-7-1 Fuchicho, Fuchu-shi
- 🚶 3min walk from Keio Line Fuchu Sta.
- 👥 45 seats 🚭 Smoking and non-smoking sections separated



Bright interior with big windows. Different atmospheres during the day and night.

Lunch course(¥1,000) Choose your main dish out of three. Salad bar and bread are included.

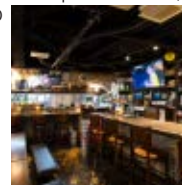
## Shuku Ba Machi

MAP  
P.31 D-1

Homemade hamburg steaks are popular. Choose from different portion sizes and seven sauces. 50 kinds of beers around the world and a variety of alcohol drinks are available. Sport games are shown on a big screen.

- ☎ 042-340-0666 🕒 Lunch: Mon-Sat 11am-3:30pmLO, Dinner: Mon-Thu 4pm-3amLO/ Fri & Sat 4pm-4:30amLO / Sun & holiday: Mon: 4pm-12amLO
- 📍 None 📍 Urano Bldg 2nd floor, 1-5-7 Fuchicho, Fuchu-shi
- 🚶 1min walk from Keio Line Fuchu Sta.
- 👥 50 seats 🚭 Smoking

You can watch real-time games drinking soccer, rugby- or baseball-inspired cocktails!



Three screens show different sport games.



Hamburg steak 150g ¥810—. (Homemade demi-glace sauce 200g ¥918) Bottled beers ¥756—.





# Information on Attractions and Gourmet Food in Fuchu

## Okunitama-jinja Shrine and Noguchi Sake Brewery

Okunitama-jinja Shrine is one of the oldest shrines in Tokyo with more than a 1900-year history. Noguchi Sake Brewery Nakakyuhon makes sacred sake for the shrine. The Brewery was established in 1860 and produces "Kozuru" (sacred sake), "Kurayami Matsuri" (Darkness Festival), "Nakayakyube" etc.



Okunitamajinja Shrine is famous for warding off bad lucks and matchmaking.

### Okunitama-jinja Shrine

MAP P.31 C-2

- ☎ 042-362-2130
- 📅 (Apr 1 to Sep 14) 6am -6pm, (Sep 15 to Mar 31) 6:30am -5pm
- 📍 3-1 Miyamachi, Fuchu-shi
- 🚶 5 min walk from Keio Line Fuchu Sta. or JR Fuchuhommachi Sta.
- 📅 Kurayami Festival (Darkness Festival) May 3 to 6
- 📅 Hassaku Sumo Festival Aug 1 Kuri Festival (Chestnut Festival) Sept 27 & 28

### Shuza Nakakyu-honten (Noguchi Sake Brewery)

MAP P.31 C-2

- ☎ 042-362-2117
- 📅 9am - 8pm
- 📍 Sun
- 📍 4-2-1 Miyamachicho, Fuchu-shi
- 🚶 4 min walk from Keio Line Fuchu Sta.



Kozuru (in the middle) 1.8 litre ¥1,995.

## Suntory Tokyo-Musashino Brewery

MAP P.28 B-3

Suntory Natural Water Brewery (Tokyo Musashino Brewery), established in 1963, is the oldest brewery of Suntory and the only brewery of major beer manufacturers located in Tokyo. Currently, you can see the manufacturing process of The Premium Molts through the 70 minutes factory tour. The tour includes taste testing time at the end, so you can enjoy branded beer selections of The Premium Molts, The Premium Molts Kaoru Ale and The Premium Molts Master's Dream up to 3 cups. \*Non-alcoholic beverages are also available.

- ☎ 042-360-9591
- 📞 Telephone reception hours: 9:30am-5pm (closed on holidays)
- 📅 Regular closing days (occasional extra holidays) 3-1 Yazakicho, Fuchu-shi
- 🚶 10min from Keio Line & JR Bubaigawara Sta. by free shuttle bus



This brewery is in the lyrics "Central Feeway" by a famous singer, Yumi Matsutoya.



Beer tastes even better after the factory tour.

## Local production for local consumption

There are over 400 farms in Fuchu. Not a few restaurants serve dishes using fresh vegetables harvested in the city. At "Trattoria La Vita," an authentic Italian restaurant, you can try Italian pasta and salad and Edo vegetables produced by local farmers.

### Trattoria La Vita

MAP P.31 C-1

- ☎ 042-360-1166
- 📅 11:30am-2:30pmLO, 5:30pm-9:30pmLO
- 📍 Mon Catsle Plaza 204, 1-8-12 Fuchicho, Fuchu-shi
- 🚶 2 min walk from Keio Line Fuchu Sta. 23 seats
- 🚭 Non-smoking \*the ashtray available outside



Baked Fuchu-veggie pasta ¥1,700.



All kinds of vegetables harvested in the city.



## Fuchu Official Visitor Guide "The Mystery City, Fuchu"

You can find information on the best sightseeing spots, famous restaurants, recommended souvenirs and more! Please visit our page!



## Gourmet while Watching Horse Races at Tokyo Racecourse

### Tokyo Racecourse

MAP P.51 D-5

- ☎ 042-363-3141 📅 Race Dates 9:00am-5pm / Weekdays 10am-12pm, 1pm-4pm
- 📍 Mon, Thu, holidays & irregular holidays 1-1 Hi Yoshicho, Fuchu-shi
- 🚶 2 min walk from Keio Line Fuchu Keiba Seimon Mae Sta.



You can enjoy watching horseracing from satisfying facilities.

G One Yaki pancake with fillings (¥150) (G One Yaki)



Oana Donut (¥200) (Tokyo Café & Bakery)



Curry Rice with Pork Loin Cutlet (¥1,850) (Hotel Okura Memorial Stand 6F)

## Watching Rugby Games with Snacks

Fuchu Asahi Football Park (P.2) serves as the rugby campground for Rugby World Cup 2019 and the Tokyo 2020 Games. The nearest station is Tama station on Seibu Tamagawa Line. It takes about 20 min by walk via Musashinonomori Park to TOKYO STADIUM (AJINOMOTO STADIUM) (P.2) where Rugby World Cup 2019 is held. Don't miss the couple of restaurants around Tama station including Kisuge Shokudo Restaurant, which offers full range of home-made set meals and so on.

### Kisuge Shokudo Restaurant

MAP P.29 D-2

- ☎ 042-306-8559 📅 11:30am-2pmLO, 6pm-8:30pmLO (lunch time only on Saturdays)
- 📍 Sun, Mon & holidays 2-29-31 Asahicho, Fuchu-shi
- 🚶 2 min walk from Seibu Tamagawa Line Tama Sta.
- 🚶 16 seats 🚭 Non-smoking



"Meal of the Day" with seasonal grilled fish from ¥900.



Tama Sta. preparing for the Tokyo 2020 Games (conceptual drawing)

## Watching the Olympic Games with Snacks

The road race under the clear blue sky guarantees a festive mood to the city. BOULANGERIE Terre Vivante located near Musashinonomori Park, the starting point of the race at Olympic Games Tokyo 2020 (P.3), offers sandwiches, filled and stuffed bread, fried chicken, etc. to go. Let's cheer for the Olympians with these snacks!

### BOULANGERIE Terre Vivante

MAP P.29 D-2

- ☎ 042-330-1500 📅 7:30am-7pm
- 📍 Mon (Open if a national holiday falls on Mon, closed the following day)
- 📍 2-31-1 Asahicho, Fuchu-shi
- 🚶 3 min walk from Seibu Tamagawa Line Tama Sta.
- 🚶 8 seats



Assorted Sandwiches (small, ¥367), Spiral Fried Potato (¥113), Cheese Canapé (¥180)



Musashinonomori Park, the official starting point of the race.





# Gourmet Among the Lines of Zelkova Trees



"The Mystery City, Fuchu"  
Discover Fuchu's mysterious places with us!



"Fuchu Tourism Official"  
Discover the charms of festivals and events in the city!



## 1 Patisserie La Bonbonniere

French patisserie which offers cakes with seasonal fruits and confectionary.

☑ Zelkova Bldg 1st floor, 1-25-12 Fuchuko, Fuchu-shi  
☎ 042-306-5536  
🕒 10am-7:30pm  
📅 Tue



## 2 Bonjour Bon Bakery Fuchu Shop

Maple-butter bread, called Maple Meron Pan is the most popular here.

☑ 1-8-2 Kotobukicho, Fuchu-shi  
☎ 042-366-9900  
🕒 8am-8pm  
📅 Not fixed



## 2 Bonjour Bon Bakery

## 3 Copa de Cafe

Coffee house with retro style interior serving cakes, soda, alcohol, tea and coffee.

☑ Shimizu Bldg 1st floor, 1-1-32 Kotobukicho, Fuchu-shi  
☎ 042-366-7944 🕒 9am-8:30pm / Sun & holidays 10am-8:30pm  
📅 None



## 2 Mongenbo Soba Restaurant

Try soba made of the best quality buckwheat flour from Hokkaido with traditional process in the modern Japanese style restaurant.

☑ Kotobuki Mansion 1st floor, 1-6-2 Kotobukicho, Fuchu-shi  
☎ 042-306-9022  
🕒 11:30am-3pm, 5pm-9:30pm LO  
📅 Mon



## 4 Harmony Cafe

Food served from ¥500 and coffee from ¥200. Japanese styled room is also available.

☑ Old Fuchu Green Plaza Annex 1st floor, 1-1 Kotobukicho, Fuchu-shi  
☎ 042-340-0212 🕒 10am-5:15pm LO  
📅 Wed



## 5 Nagahamaya Ramen Restaurant

Restaurant with its main branch in Hakata. Pork bone broth is prepared for a whole day.

☑ 2-1-1 Miyamishicho, Fuchu-shi  
☎ 042-361-6614  
🕒 11am-2am 📅 None



## 6 Fuchu Yamatoya Ramen Restaurant

Serving Yokohama Ie styled ramen with pork, seaweed and spinach in pork bone broth.

☑ 2-4-15 Miyamishicho, Fuchu-shi  
☎ 042-335-1088  
🕒 11am-3am 📅 None



## 7 Oyasumi Dokoro Cafe

Enjoy Japanese sweets from ¥400 at this little tea house in Okunitamajin Shrine ground.

☑ 3-1 Miyamachi, Fuchu-shi  
☎ 042-365-0886  
🕒 10am-5pm  
📅 Wed



## 3 KiKi

A mini grocery store selling natural food, organic vegetables, vegetarian food, additive-free snacks and gentle on clothes, household goods.

☑ Shimizu Bldg 1st floor, 1-1-32 Kotobukicho, Fuchu-shi  
☎ 042-319-2147  
🕒 11am-7pm 📅 Not Fixed



## 4 Brigela Gelato Shop

You can choose from 16 flavours of Sicilian dessert Brioche con Gelato.

☑ LE SIGNE 1st floor, 1-100 Miyamachi, Fuchu-shi  
☎ 042-310-9237  
🕒 11am-8pm  
📅 Not Fixed



## 7 Oyasumi Dokoro Cafe (Okunitama Shrine)



## Coffee

## Koshu Kaido

## Harmony Cafe

## Brigela

## Orange Boots Cafe

## Nagahamaya

## Fuchu Yamatoya

## Bonjour Bon Bakery

## Copa de Cafe

## Harmony Cafe

## Brigela

## Orange Boots Cafe

## Nagahamaya

## Fuchu Yamatoya

## Bonjour Bon Bakery

## Copa de Cafe

## Harmony Cafe

## Brigela

## Orange Boots Cafe

## Nagahamaya

## Fuchu Yamatoya

## Bonjour Bon Bakery

## Copa de Cafe

## Harmony Cafe

## Brigela

## Orange Boots Cafe

## Nagahamaya

## Fuchu Yamatoya

## Bonjour Bon Bakery

## Copa de Cafe

## Harmony Cafe

## Brigela

## Orange Boots Cafe

## Nagahamaya

## Fuchu Yamatoya

## Bonjour Bon Bakery

## Copa de Cafe

## Harmony Cafe

## Brigela

## Orange Boots Cafe

## Nagahamaya

## Fuchu Yamatoya





# How to Enjoy Fuchu

## Fuchu-no-Mori Park

MAP  
P.29 C-2

Fuchu-no-Mori Park is a sports park with lushly green woods and hills as well as beautiful ponds. There are sports facilities such as a ground for both football and hockey, tennis courts and a plain baseball field in the park. An open grass field, an art museum and area for barbecues are also included. Furthermore, there are an athletic field, a traditional Japanese landscape garden and a wading pool for kids, where people of all ages definitely can enjoy.

📍 1 Sengencho, 2 Midoricho, 2 Tenjincho, Fuchu-shi  
🚶 10min walk from Keio Line Higashi-fuchu Sta.

### BBQ

🕒 10:00am-4:00pm, 7 days a week (excluding new year's holidays)  
☎ 042-364-8021 (8:30am-5:30pm) \*Reservation can be made up to one month in advance.  
\*No rental service for BBQ equipment. Please bring your own food and equipment.



This extensive park is filled with nature.



Visitors can enjoy beautiful sceneries of each season in this Japanese garden.



## Fuchu Art Museum

Fuchu Art Museum collects approximately 1,800 art pieces from late Edo period to current days, which mainly composed of paintings. About 60 art pieces are exhibited at permanent exhibitions. Special exhibitions are also held with a theme related to Life & Arts occasionally. The Museum includes a café, a museum shop, an art library, etc.

📍 1-3 Sengencho, Fuchu-shi (Fuchu-no-Mori Park)  
☎ 042-336-3371 🕒 10:00am-5:00pm (last entry: 4:30pm)  
📅 Mon (if a national holiday falls on Mon, closed on the following day) and the next day of a national holiday (open if a Sat, Sun or a national holiday falls on the day)  
🎫 Permanent exhibitions: ¥200 (¥100 for college/high school students, ¥50 for junior high/elementary school students) Admission fee for special exhibitions differ from that of permanent exhibitions.  
🚶 Take Chu Bus bound for Tamacho from Fuchu Station, and get off at Fuchu-shi-bijutsukan or 17min walk from Keio Line Higashi-fuchu Sta.



Fuchu Art Museum has reopened in March 2019 after renovation.



Floats used for the famous festival in Fuchu-Kurayami Matsuri, and big Japanese drums are on exhibition in the museum.

## Municipal Museum KYODONOMORI

MAP  
P.28 B-3

A local history museum which includes a riverside park: It exhibits local historical materials. It has a planetarium and "Furusotaiken kan" in which you can try traditional plays and other experiences.

📍 6-32 Minamicho, Fuchu-shi  
☎ 042-368-7921  
🕒 9am-5pm (Last entry is at 4pm)  
📅 Mon (if a national holiday falls on Mon, closed the following day)  
🎫 Admission Fee: ¥300 (younger than junior high school students: ¥150) Planetarium: ¥600 (younger than junior high school students: ¥300)

🚶 Take a bus bound for "Kyodo-no-Mori Sogo Taiikukan" from Keio Line & JR Bubaigawara Sta., get off at "Kyodo-no-Mori Seimonmae". The museum is nearby the bus stop.



"Mori-Cafe" (Forest cafe) on the first floor of the main building



## "Jomon-no-Yu", a natural spa

It's a natural spa pumped from 1,500m underground. You may be able to see Mt. Fuji on sunny days. Body scrub treatment, women's beauty treatment, and osteopathy are available at this fully equipped facility for relaxation.

📍 Frakoko Bldg No.8, 1-5-1 Miyamishicho, Fuchu-shi  
☎ 0120-041-265 🕒 10am-9am next morning ☎ None  
🎫 2,400 (¥1,500 for 90min etc.) additional ¥500 on Sat, Sun and holidays  
🚶 Nearby Keio Line Fuchu Sta.



TV is equipped on each reclining sofa.

MAP  
P.31 C-2



Half inside and half outside spa on the 11th floor (the floor for men only).



Fuchu Tourism Association's Official Youtube Channel

Subscribe! The videos tell the story of our city in four different themes: sounds, colors, lights, echos.



## TOHO Cinemas Fuchu

MAP  
P.31 C-2

A movie theater which has clear and dynamic digital projectors, 9 screens, and 2,006 seats

📍 Kururu 5th floor, 1-50 Miyamachi, Fuchu-shi  
☎ 050-6868-5032 🕒 Differ depending on the films (See website for details.) 🚶 Nearby Keio Line Fuchu Sta.



Dynamic motion theater



Many kinds of food

## Internet Cafes

They're convenient when you want to search for something or just relax and stretch your legs. Some have showers or self-service laundries.

**Kaikatsu CLUB Relax Room** MAP P.31 C-1

📍 B Bldg 6th floor, 1-3-3 Miyamishicho, Fuchu-shi

🕒 042-368-8588 🕒 Open 24 hours

🚶 2min walk from Keio Line Fuchu Sta.

**SHEEPBOX Fuchu branch** MAP P.31 C-2

📍 Furakoko Bldg No.8 3rd floor, 1-5-1 Miyamishicho, Fuchu-shi

☎ 042-351-6660 🕒 Open 24 hours

🚶 2min walk from Keio Line Fuchu Sta.

## 100JPY Shop

A wide assortment of items including stationery and food for 100JPY.

**DAISO Purarito KEIO Fuchu branch** MAP P.31 C-1

📍 Purarito KEIO Fuchu West 5th floor, 1-2-1 Fuchicho, Fuchu-shi

🕒 042-352-0202 🕒 10am-9pm / Sat, Sun & holidays 10am-8pm

🚶 It is directly connected with Keio Line Fuchu Sta.

**CAN-DO Fuchu Kururu branch** MAP P.31 C-2

📍 Kururu 3rd floor, 1-50 Miyamachi, Fuchu-shi

☎ 042-366-7210 🕒 10am-9pm 🚶 Nearby Keio Line Fuchu Sta.

**Watts with Fuchu LE SIGNE branch** MAP P.31 C-2

📍 LE SIGNE 2nd floor 202, 1-100 Miyamachi, Fuchu-shi

🕒 10am-8pm 🚶 Nearby Keio Line Fuchu Sta.

## Round1 Fuchuhommachi branch

MAP  
P.31 C-3

An entertainment complex in which you can enjoy bowling, karaoke, billiards, table tennis, darts, the newest arcade games, and so on.

📍 Kaneta Bldg, 1-13-3 Hommachi, Fuchu-shi ☎ 042-340-4901  
🕒 9am-6am (Open 8am on Mon, 24 hours on Sat) ※ Bowling: open 8am/Amusement area: 10am-11:50pm every day  
🚶 Nearby JR Fuchuhommachi Sta.



The latest machine has been equipped for the bowling facility.



## Karaoke

Karaoke shops with rich illuminators and audio system and order some food. You can drink all you want.

**Big Echo Fuchu Sta. main branch** MAP P.31 C-2

📍 Ryoko Bldg 1st floor, 1-5-1 Miyamishicho, Fuchu-shi

☎ 042-340-3041 🕒 11am-5am (Fri, Sat and the days before holidays: 11am-6am) 🚶 Nearby Keio Line Fuchu Sta.

**Big Echo Fuchu Sta. branch** MAP P.31 C-1

📍 B Bldg 3rd floor, 1-3-3 Miyamishicho, Fuchu-shi

☎ 042-306-5775 🕒 12pm-2am (Fri and the days before holidays: 12pm-6am, Sat: 11am-6am, Sun and national holidays: 11am-2am) 🚶 Nearby Keio Line Fuchu Sta.

**Karaoke Banban Fuchu branch** MAP P.31 C-2

📍 Saran Bldg 2nd floor, 2-7-25 Miyamishicho, Fuchu-shi

☎ 042-363-1941 🕒 Open 24 hours 🚶 Nearby Keio Line Fuchu Sta.

## Public bath

Traditional public baths equipped with jet baths, vibration baths, saunas, etc.

**Asahi Yu (Asahi Spa)** MAP P.30 B-1

📍 3-6-2 Miyamishicho, Fuchu-shi ☎ 042-361-9362 🕒 4pm-11pm / Sun 2pm-11pm ☎ Mon (Open if a national holiday falls on Mon)

🚶 6min walk from Keio Line Fuchu Sta.

**Akebono Yu (Akebono Spa)** MAP P.28 B-2

📍 1-11-1 Harumicho, Fuchu-shi ☎ 042-361-5068

🕒 4pm-12am ☎ Mon (Open if a national holiday falls on Mon, closed the following weekday) 🚶 10min walk from Keio Line Fuchu Sta.

**Fuji no Yu (Fuji Spa)** MAP P.29 D-2

📍 DOMI PREMIER, 2-27-20 Asahicho, Fuchu-shi ☎ 042-361-4422

🕒 4pm-11pm (Last entry is at 10:30pm.) ☎ Mon

🚶 2min walk from Seibu Tamagawa Line Tama Sta.

Sightseeing maps, brochure, and advice about sightseeing are available.



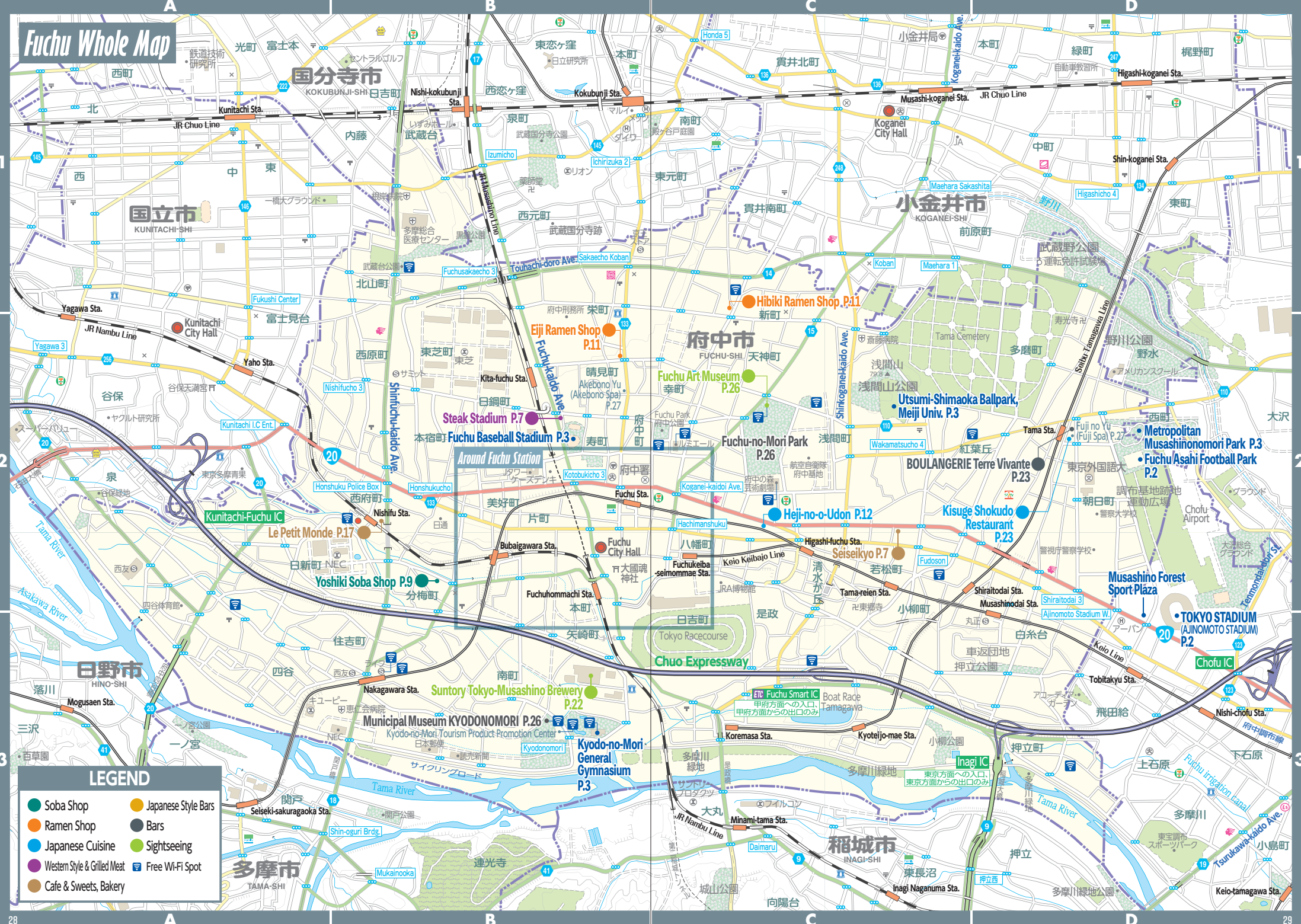
Fuchu Tourist Information Center

📍 3-1 Miyamachi, Fuchu-shi ☎ 042-302-2000 🕒 9am-5pm  
📅 Tue (Open if a national holiday falls on Tue or while having an fesetival)  
🚶 5 min walk from Keio Line Fuchu Sta.

MAP  
P.31 C-2



# Fuchu Whole Map

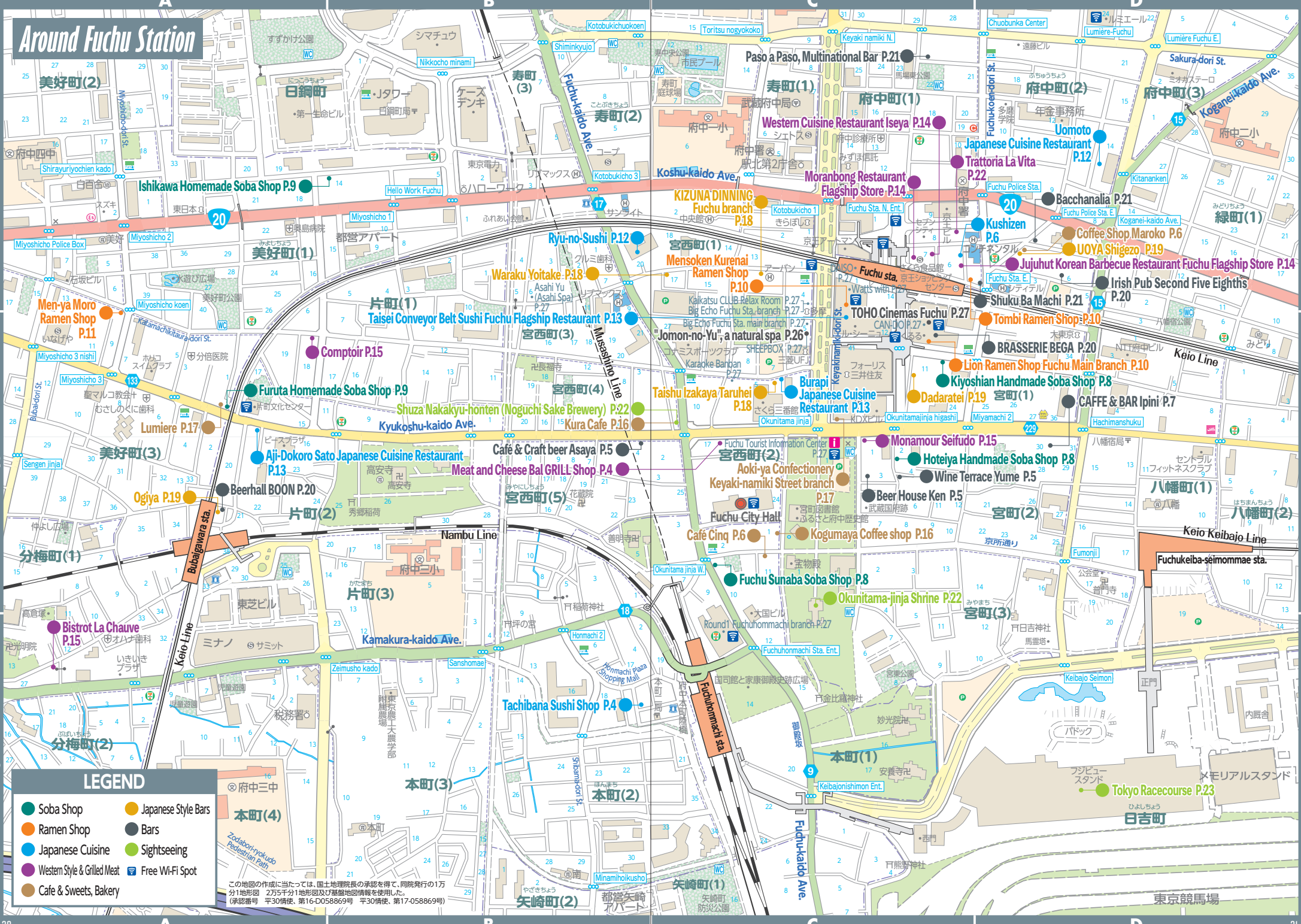


## LEGEND

- Soba Shop
- Ramen Shop
- Japanese Cuisine
- Western Style & Grilled Meat
- Cafe & Sweets, Bakery
- Japanese Style Bars
- Bars
- Sightseeing
- Free Wi-Fi Spot



## Around Fuchu Station



この地図の作成に当たっては、国土地理院長の承認を得て、同院発行の1万分1地形図 2万5千分1地形図及び基盤地図情報を使用した。  
(承認番号 平30情使、第16-D058869号 平30情使、第17-058869号)