

TOKYO FUCHU City Map for Sightseeing

Published in July 2019

Map Symbols

| | | | |
|--|-------------------|--|---------------------|
| | Information board | | Tourist Information |
| | Convenience Store | | History |
| | Public Toilet | | Culture |
| | Police Box | | Hotel |
| | Post Office | | Museum |
| | Library | | Sento (Public bath) |
| | Currency Exchange | | Shopping |
| | Park | | Cafe |
| | Shrine | | Restaurant |
| | Temple | | Activities |

Information on free Wi-Fi in Fuchu

In Fuchu City, there are 28 FUCHU City Free Wi-Fi spots in Fuchu and you can use free Wi-Fi in more than 100 places. First, download the app "Japan Connected-free Wi-Fi" on Android or iOS device. Once you have registered for it, you can get a free internet connection at participating stores.

"Japan Connected-free Wi-Fi" app is provided by NTT Broadband Platform Co., Ltd.

With this app, you can use free Wi-Fi not only in Fuchu City but also all over Japan at more than 170,000 Wi-Fi spots. (as of the end of April 2019)

*Download and registration of this app are recommended with an internet connection.

You can use it in 16 languages including English, Simplified Chinese, Traditional Chinese, Korean, Thai, Malay, Indonesian, French, Spanish, German, Italian, Russian, Portuguese, Vietnamese, Tagalog and Japanese.

Find the nearest Wi-Fi spot on the map of the app, and touch the connect button to get a free internet connection.

You can search available Wi-Fi spots from the link below.

<https://sr.ntt-bp.net/jwmap/en/>



Model Course A

Fuchu-no-Mori Park and Sengenyama Park Course

01 Fuchu Station 5 min.

02 Fuchu-no-Mori Park 001 府中の森公園
People often visit this large park that has a large lawn area, a Japanese garden and a water park where children can play. Take a bus from Fuchu Station to go there.

03 Fuchu Art Museum 10 min.
An art museum comes in sight at the end of the cherry-blossom avenue that runs through the park. Paretan and Murata, the mascot characters of this museum, will welcome you. The well-thought-out special exhibition with valuable collections is being held on the second floor. Free art gallery and museum shop are open on the first floor, perfect for a rest after your stroll.

04 Sengenyama Park 2 min.
Mt. Sengen is 80 meters high, which is just right for a short hike. Although it is a small mountain, you can see the whole of Fuchu City and sometimes even Mt. Fuji.

05 Genoise [Sengencho store] 004 ジェノワーズ洋菓子店(浅間町店)
Among the four stores of this cake shop in Fuchu City, this is the main store located close to Sengenyama Park. Does eating cakes in the park sound good? Of course, you can eat in its in-store cafe, too.

06 Tama Cemetery 005 多磨霊園
Beside Sengenyama Park, there is a cemetery which was established as Japan's first park-style cemetery. Graves of renowned people such as Yamamoto Isoroku, an important military commander, and famous artist Okamoto Tarō are in this cemetery. It is an interesting experience to see Japanese-style graves in a large park.

Model Course B

Fuchu Culture and Nature Course

01 Fuchuhommachi Station 15 min.
Drop by when you have time

02 Suntory Tokyo Musashino Brewery 5 min.
It is the only beer factory in Tokyo and it offers a free tour in which you can try some beer (reservation for the tour is required beforehand). Reservation is available only in Japanese, so ask someone who speaks Japanese to reserve. (Next to the DAI-TOKYO Wholesale Market)

03 DAI-TOKYO Wholesale Market 10 min.
The best way to know the culture of a country is visiting markets. This is a fish market that has about 70 stores, offering a variety of items from food products such as fish, meat and vegetables to daily commodities. Some stores close earlier, so going there in the morning is recommended. (5 min by taxi from Fuchu Station, 15 min on foot from Fuchuhommachi Station.)

04 Fuchu Municipal Museum Kyodonomori
A museum complex located in one large park offers historic buildings, replicas of Fuchu's traditional old houses and its city office, a permanent exhibition where you can learn about the history of Fuchu through panels and models, and a planetarium. Spending a day in this park will not make you bored. In early spring, plum blossoms can be seen.

05 Kyodo-no-Mori Tourism Product Promotion Center
Nearby the museum, Fuchu souvenirs and meals are offered. Why don't you have lunch made out of local ingredients in the restaurant?

06 Shimogawara Path 009 下河原緑道
It is both a cycling road and a promenade that stretches straight from the Fuchu Municipal Museum Kyodonomori to the north. It is on the trail of the railway tracks that are not used nowadays. Let's walk and see the rich nature along the road.

07 Mori-no-Cafe 010 森のカフェ
Have a relaxing time at Mori-no-Cafe after your walk on the green path. As "mori" means forest in Japanese, the cafe looks like a guesthouse in the forest.

Tokyo Stadium (Ajinomoto Stadium)

東京スタジアム(味の素スタジアム)

The Rugby World Cup 2019™ starts here
Fuchu. Starting with the opening match with the Team Japan, eight matches — more than in any other stadium — will take place here. From Fuchu to Tobitakyu Station on the Keio Line, then 5 min on foot.

Olympic Road Race Course

オリンピックロードレースのコース

The heat is on in Fuchu, the start of the road race!
The road race course for the 2020 Tokyo Olympics starts in Fuchu. After a ceremonial start at the Musashino-no-Mori Park, the riders will proceed in a parade through Fuchu to the official start at the Koremasa Bridge. It's a chance to see the best riders up close.

Recommendation

012 JRA Tokyo Racecourse JRA東京競馬場 B3
Dramatic horse racing track



An exemplary horse racing track that holds many stakes races such as the Japan Derby. Horse races in front of your eyes are very impressive. Buy a betting ticket if you go there. The statue of a golden horse on the way to the JRA Tokyo Racecourse is a great photo spot.

013 JRA Racing Museum (Horse Racing Museum) JRA競馬博物館 C2
A rare museum specialized in horse racing



A free museum specializing in horse racing. In addition to the area presenting the history of horse racing, new experiences are now available, including a theatrical attraction of live-feeding video and an exhibit where visitors can pretend to be a jockey.

014 Fuchu Prison (CAPIC) 府中刑務所(CAPIC) A1
Get "made in prison" goods



The biggest prison in Japan was built about 80 years ago. The exhibition corner next to the prison sells daily goods and high quality crafts made by prisoners from all over Japan. They are affordable and make for nice souvenirs.

015 Kokushi Office and Ieyasu Palace Historic Sites Square 国司閣と家康御殿史跡広場 B2
Meet two powerful men through VR



This is the site of the residence and office of the provincial governor (kokushi) who ruled "Musashi no Kuni" (Musashi Province) around the year 700. This is a national historical site because the shogun Tokugawa Ieyasu had his Fuchu Palace here in the early 1600s to stay on his falconry trips. Meet these two powerful men through virtual reality.

016 Tama Riverbank Green 多摩川緑地 C3
Tama river with a rich river system



The Tama riverbed keeps its diverse natural appearances. There are well-equipped facilities such as cycling roads and BBQ corners. Have a relaxing time at Tama riverside.

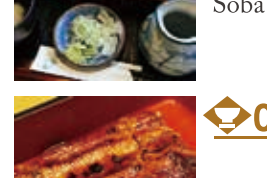
017 Hotel Continental ホテルコンチネンタル B2
Cocktails associated with horse racing



As Fuchu City is renowned for horse racing, Hotel Continental offers original horse racing cocktails in its "COLT" bar. Also don't miss the limited-time offer of cocktails in connection with popular horse racing.

Restaurants

018 Ishikawa (soba) A2
Soba shop loved by local people.



Ishikawa (soba) A2

019 Uomoto (Japanese food/ee) B2
Eel and tempura restaurant, launched in 1943.



Uomoto (Japanese food/ee) B2

CHECK IT OUT

Fuchu Official Visitor Guide "The Mystery City, Fuchu"



You can find information on the best sightseeing spots, famous restaurants, recommended souvenirs and more!



"The Mystery City, Fuchu" Discover Fuchu's mysterious places with us!



"Fuchu Tourism Official" Discover the charms of festivals and events in the city!



"Burari Koku・Fu" This app provides information on the tourist spots in Kokubunji and Fuchu (English, Chinese, Korean).



Main map of Fuchu City with various points of interest, transportation lines, and landmarks.

Grid of smaller recommendations for dining, shopping, and services, including bakery, cafe, and shopping centers.

032 National Historical Remnants of Musashi Kokufu 国史跡 武蔵国府跡 B2
Find the roots of Fuchu City



"Musashi no Kuni" was a large country province located near Tokyo a thousand years ago. Its central government "Kokufu" was located in Musashi Kokufu, where now red pillars are replicated at the ruin site.

033 Okunitama-jinja Shrine 大國魂神社宝物殿 A2
The history of Okunitama-jinja Shrine



It is a small museum exhibiting ritual goods for the Kurayami Festival, such as eight portable shrines and big drums, historical documents, and treasures. Open: Sundays, holidays and shrine festival days

034 Kamiyoshimura 紙よし村 A1
Washi specialty store



Washi is Japanese traditional paper which is light and strong. Kamiyoshimura is a store specializing in Washi since the 19th century. It offers high-quality Washi from all over Japan. Chiyogami is recommended for souvenirs as it has a wide range of colors.

035 ROUND1 ラウンドワン A2
If you want to enjoy yourself in Fuchu, this is the place.



The "Round 1" near Fuchuhommachi Station offers amusement facilities, such as bowling, darts and billiards. You can play over night as it is open until morning (open 24 hours on weekends).

036 KURURU くるる B1
A compact and functional shopping center



KURURU is a shopping center which gathers stores specializing in youth fashion and merchandise. The restaurant floor includes a ramen shop and a sushi restaurant, cafes, Toys"R"Us and a cinema complex. You can do almost all kinds of shopping here.

037 LE SIGNE ル・シーニュ B1
A large complex connected to the South Exit of Fuchu Station



LE SIGNE is a large complex with about 100 stores, a community center Platz and other public facilities and residences. It is a new image of Fuchu Station's South Exit.

038 TOHO CINEMAS Fuchu TOHOシネマス B1
Cinema complex equipped with 9 screens



It offers the latest and most popular lineups on premium screens in luxurious rooms or on huge screens wider than 14 meters. Of course, all screens are equipped with overwhelming 5.1ch digital surround sound.

039 Fuchu Tourist Information Center 府中市観光情報センター(観光案内所) B1
The center of Fuchu's tourism



The Fuchu Tourist Information Center provides you with Fuchu City guidebooks, event information and maps.

040 FORIS フォーリス B1
Fuchu Keyaki Namiki's specialty mall



FORIS is a specialty mall with a variety of casual-style clothing shops and food stores in one building. It also holds shows and concerts in its bright open atrium. Let's hang out to see all the interesting events!

041 Nakakyuhonten (sake shop) 中久本店(酒店) A1
Get Japanese sake as a souvenir



This store offers a wide range of sake brands from all over Japan. "Kouzuru" which is made in Fuchu has a nice flavor, and you can drink it hot or chilled.

042 Kura Cafe 蔵カフェ A1
Kura, a cafe made out of a Japanese warehouse



Right beside Nakakyuhonten is a cafe which is a refurbished Kura (Japanese warehouse) from the Edo period (17th to 19th century). Enjoy the taste of coffee and sake lees latte made from by-products of sake in the cafe decorated with retro ornaments.

043 Suzukiya 鈴木屋 A2
An indispensable shop for festivals



It is a specialty store for festivals in Fuchu City such as Kurayami (Darkness) Festival. Festival items that you can get only in Japan, such as Hanten (short coat), Tenugui (towel face-cloth), and Tabi (rubber-soled socks) are all offered in this store.

044 Babadaimon no Keyaki Namiki (two rows of zelkova trees along the avenue) 馬場大門のけやき並木 A1
Symbol of Fuchu City



This is an avenue with 150 zelkova trees that stretches straight from the Okunitama-jinja Shrine for 500 meters. The people of Fuchu love the green tunnel-like appearance which is designated as a natural monument.

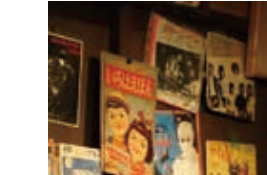
On the street, there is a bronze statue of Minamoto Yoshiie, who was a samurai (Japanese warrior) 900 years ago.

045 Mensoken Kurenai/Kurenai BLACK 麵研創 紅/紅BLACK B1
Two characteristic Ramen shops



One is Kurenai, offering voluminous ramen with thick noodles in spicy red soup, the other is Kurenai BLACK, offering smoky ramen with a black soup using garlic, charred soy sauce and black pepper. Try them both and compare them for yourself.

046 Dadarateai 駄駄羅亭 B1
Enjoy the retro atmosphere



This is an izakaya (Japanese-style pub) replicating the Showa era (1926-1989), a period of rapid growth. It reminds Japanese people of old days in Japan, and for foreign visitors it's a place where you can experience the old style of Japan.

Fuchu souvenirs



Rokusha dumplings (Aokiya) It is a simple bun made with roughly-crushed sweet beans covered with a soy sauced sheet, with a stamp of the six shrines of the Okunitama-jinja Shrine.



Musashino Nisshi (Aokiya) Musashino Nisshi is a mini baumkuchen with the image of wood in Fuchu City in mind. It is different from other baumkuchen as the middle of it is filled with chocolate and white chocolate.



Kuromai (Fuchu City Ancient Rice Research Organization) Kuromai is black rice which has been eaten in Fuchu since ancient times. If you mix a little of Kuromai with white rice, it will become pale pink rice.



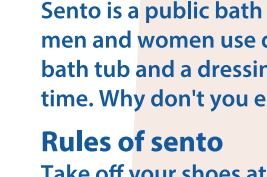
Musashi Kokufu roll cake (Monamour Seifudo) It is a red roll cake sprinkled with strawberry powder, which represents the pillar of Musashino Kokufu's trail. The flavor of sour freeze-dried strawberry and purple potato cream is very nice.

Asahiyu 049 Akebonoyu 050
Asahiyu is equipped with a jacuzzi, air-bubble bath, sauna bath and more, and on Sundays and holidays, you can enjoy baths that contain supplements and herbs. The walls of the bath area are decorated with a landscape mural, giving it a retro "sento" feel. map A2



In Akebonoyu, there is a variety of baths such as a sauna bath (extra charge), an open-air bath and an electric bath which has a massaging effect. map B1

Have a relaxing time in a sento

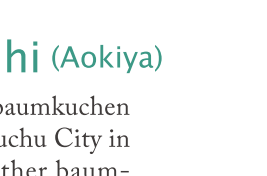


Sento is a public bath that you can find around the town. In sento, men and women use different facilities, and each room has a large bath tub and a dressing room that 10-20 people can use at the same time. Why don't you enjoy Japanese sento culture in Fuchu? Rules of sento Take off your shoes at the entrance. Take off your underwear before you enter the bath area. Wash your body before soaking in the bath. Don't wash your body and clothes in the bath. Don't soak your towel in the water. Dry your body before you go out to the changing room.

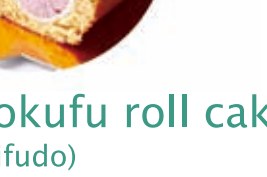
Jomonnouy 051
Located near Fuchu Station on the Keyaki Namiki Dori Ave. is a natural hot spring "Jomonnou". Its natural water is brown and has many effects such as healing incised wounds, neurosis and poor circulation. On the top of the building, there is an open-air bath for men where you can see Mt. Fuji. The admission fee is 2400 yen including the use of rental towels and the napping room. *Those who have tattoos or tattoo seals on their bodies are not allowed to enter. map A1



Kuribayashi Gyoza
Gyoza are pan-fried dumplings made with meat covered by a thick flour sheet. Kuribayashi Gyoza are 50% larger than normal gyoza, and they contain a lot of vegetables. map B1



Fuchu Roman
Fuchu Roman is shochu (Japanese vodka) made from Kuromai (Fuchu's black rice). The name of this mellow flavor shochu "Roman" means romantic. map B1



Flowers in Fuchu
Plum blossoms (February to March)
Cherry blossoms (late March to early April)
Musashino lily (April to May)
Hydrangea (June)
Oga lotus (mid-July to mid-August)

Welcome to Fuchu City
We welcome all of you who are visiting Fuchu City. Fuchu has a long history. After the Taikanokaishin revolution in 645, Musashi Kokufu was established. Since then, it has flourished as a center of the Kanto area. Fuchu is also rich in nature with the landscapes of the Tama river and Mt. Sengen. In the central area, there are shopping centers, department stores and a theater. We hope you have a wonderful stay in Fuchu City.

About this map
We provide you with the information on useful and convenient activities, including shopping and leisure. This map was made to make your stay in Fuchu as pleasant as possible. There are many things that originated in Fuchu, such as Don Quijote, which is very popular with foreign visitors in Japan, the research of blueberry cultivation and a park-style cemetery. Why don't you find your favorite spot in Fuchu?

Access information to Fuchu

Map showing transportation routes to Fuchu City from Narita Airport, Haneda Airport, and various train lines (Keio Line, Keiyo Line, JR Yamanote Line, etc.).