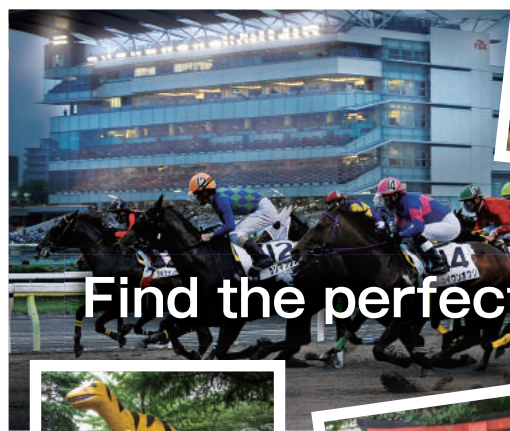


A hundred views of
SHINAGAWA
WALKING MAP

Shinagawa
Tourism Ambassador
Cinnamoroll



Find the perfect backdrop for your photo!



Take a stroll through fascinating Shinagawa

On the surface, Shinagawa seems like an urban transportation hub. In reality, however, Shinagawa has much more to offer, from small shopping streets to nature spots and fascinating historic sites. In fact, the more you know about Shinagawa, the more you realize that it is a place overflowing with charm and history. So come for a stroll through the town and check out the “Best Spots in Shinagawa” as voted by Shinagawa locals themselves.



INDEX

Photogenic Spots

- P.02 Bustling Togoshi-Ginza Shopping Street
- P.03 Osaki - The Urban Subcenter
- P.04 Kodomo-no-mori Park
- P.05 Shinagawa Aquarium
- P.06 Kamome Bridge and the Keihin Canal



P.07-08 Shinagawa's Seasonal Calendar

Featured Areas

- P.09-10 Pilgrimage to Tokai Seven Deities of Good Luck
- P.11-12 Tour of Jonan Gozan (Five Hill Top Areas in Jonan)
- P.13-14 Pilgrimage to Ebara Seven Deities of Good Luck
- P.15 Tour of Shopping Streets
- P.16 Waterside Tour Part 1
- P.17 Waterside Tour Part 2



P.18 Enhance Your Walking Enjoyment with an AR App

<Appendix> Shinagawa Area Folding Map

The places selected as the **Best Spots in Shinagawa** are indicated by numbers ❶ to ❷.

For the specific location of each spot, see the **Shinagawa Area Folding Map** in the Appendix at the end of this leaflet or visit the Shinagawa City **website** (<http://www.city.shinagawa.tokyo.jp/hyakkei/>).

Shinagawa has so many beautiful spots to visit, you mustn't forget your camera!

Shinagawa Tourism Ambassador
cinnamoroll



Cinnamoroll

Cinnamoroll is a boy puppy with a curly tail like a cinnamon roll. His ears are big enough that he can fly!



Photogenic Spots

Capturing fabulous spots in an even better light.

Learn how to take fantastic photos
at five of the One Hundred Scenic Spots in Shinagawa.



Bustling Togoshi-Ginza Shopping Street

One Hundred Scenic Spots in Shinagawa 79

An everyday scene overflowing with warmth

Togoshi-Ginza Shopping Street—the longest shopping street in Tokyo. Many of the shops lining this 1.3-kilometer-long street have kept their traditional facades, providing an air of intimacy. Beloved by the locals, this shopping street begs to be photographed.



One Point Advice

If you focus your camera on the "Togoshi-Ginza" banner above the people on the street, the people become less central to the photo and you can more clearly capture the feeling of bustle along the entire shopping street.



A street-level railroad crossing—another rare sight today



Osaki - The Urban Subcenter

One Hundred Scenic Spots in Shinagawa 50

A beautiful night scene that captivates the viewer

Officially designated as a new subcenter in Tokyo, the area in front of Osaki Station is undergoing rapid development. New tower constructions such as Ohsaki New City, Gate City Ohsaki, and ThinkPark create a dynamic and stunning urban landscape unique to the city.



One Point Advice

When taking photos through glass, put your lens right up against the glass. To capture the beautiful night sky just before it becomes completely dark, we recommend you take the photo within 30 minutes of sunset.



The Osaki urban subcenter undergoing rapid development



Kodomo-no-mori Park

One Hundred Scenic Spots in Shinagawa 16

Let's go play with dinosaurs!

This hugely popular park features nine concrete dinosaurs in all shapes and sizes. Children have a blast scrambling up and down the ancient reptiles. Your happy pictures of these colorful dinosaurs will draw everyone's attention.



One Point Advice

Rather than trying to capture the entire dinosaur, we recommend that you get up close to the dinosaur and photograph it on an angle. Adding people to your picture will also give the viewer a sense of the dinosaur's size.



"Monster Park" is loved by all



Shinagawa Aquarium

One Hundred Scenic Spots in Shinagawa 106

The mystery and brilliance of life

Creatures of the sea swim gracefully through water saturated with light—picture perfect. But watch the scene transform at feeding time! The calm waters heave with activity, and even the sleepy eyed sea turtle shows it's a force to be reckoned with.



One Point Advice

The key to capturing a beautiful scene is to stand under the tunnel tank where you can catch the dappled light and take your picture before the water is churned up by the feeding frenzy.



Feeding time is 15:15 on Monday, Wednesday, and Friday. (Note: Subject to change)



Kamome Bridge and the Keihin Canal

One Hundred Scenic Spots in Shinagawa 93

A nostalgic sunset

At sunset the western sky is tinged with a rosy blush. You forget the metropolis around you as the hushed silence pulls you in. A magical scene that is gone in an instant. But with your camera you can capture it forever.



One Point Advice

You can add depth to your picture by framing the sky, canal, and bridge from the bridge's main tower side. If you feel the picture is a little washed out, adjust the color saturation using the camera app on your smart device.



Kamome Bridge under a blue sky—a different kind of beauty

Shinagawa's Seasonal Calendar

A prosperous town from ancient times, Shinagawa hosts events throughout the year that let you experience the city's long history and bountiful nature. Come and enjoy events that celebrate the Seasons of Shinagawa.

AR Install the kokosil app onto your smart device to enjoy the AR (augmented reality) feature with photos showing the AR symbol. See P.18 for details.

January Shinagawa Shrine New Year Mochi-tsuki Festival (January 2) 「品川神社 新春餅つき大会」(1月2日)

This is a popular event where the shrine staff and visitors together make about 50 kg of mochi (sticky rice cakes). The mochi is then served to visitors who have come to pray at the shrine. Musical accompaniment at the shrine adds to the festive New Year atmosphere, making visitors feel warm and welcome.



March Shinagawa Waterside Flower Road and Dock **AR** (March) 「しながわ花海道と船だまり」(3月)

Come and visit the dock where fishing boats and houseboats drop anchor, and take a walk along the pretty waterside road festooned with seasonal flowers. Perfect for a brisk walk or a leisurely stroll.

Winter cherry blossoms



Cherry blossoms



Hydrangeas



January

February

March

April

May

June



Plum blossoms



February

Nishikoiyama Illumination (February) 「西恋山イルミネーション」(2月)

Close to 30,000 LED lights vividly illuminate the area in front of the station to celebrate Valentine's Day. Some events are held during the illumination period.



April

December

Meguro River Cherry Trees **AR** (April and December) 「目黒川の桜」(4月・12月)

A glorious sight—about 800 cherry blossom trees in full bloom for nearly four kilometers along the Meguro River. Drop in at one or more of the many little shops in the area or join the crowds partaking in the annual ritual of hanami (cherry blossom viewing).



Azaleas

April

Shinagawa Canal Festival (Early April) 「しながわ運河まつり」(4月上旬)

This waterside festival held in Higashi-Shinagawa Sea Park is a popular and favorite spring event for many. The gorgeous cherry blossoms are a sight to see.

May

Mayaji Temple Flower Festival (May) 「摩耶寺花まつり」(5月)

Mayaji Temple has the Mayado where Maya, the birth mother of Buddha, is enshrined. Local residents and children gather here to celebrate the birth of Buddha.



June

Ebara Shrine Annual Festival AR

(Early June) 「荏原神社 例大祭」(6月上旬)

Known as the Shinagawa Tenno-sai, this festival has been held since Kamakura times. A unique festival where portable mikoshi shrines are carried into the sea and transported through the waters. Lots of little stalls are also set up in the shrine grounds.



August

Yogyokuin Nyoraiji Temple Sento Kuyo (Thousand Lantern Festival) AR

(August 13) 「養玉院如来寺 千灯供養」(8月13日)

Surrounded by beautiful green trees, the temple is decorated with more than 1,000 lanterns, giving it an atmosphere of tranquility that soothes the soul.

August

Oi Dontaku Summer Festival AR

(Late August) 「大井どんたく夏まつり」(8月下旬)

An international exchange event, dance performances, and Shinagawa pro wrestling; a police motorcycle exhibit and riding experience at the Children's Square; and even a bon-odori dance to powerful Oi Gongen Daiko drums are held. Come and enjoy one of Shinagawa's biggest summer festivals as you fill your belly from food trucks and a beer garden!

June Shinagawa Shrine Annual Festival (Early June)

「品川神社 例大祭」(6月上旬)

This popular festival draws large crowds every year. Seeing the huge mikoshi carried into the shrine and paraded up and down the shrine's steep 53 steps is an experience that should not be missed.

July

Tennoz Isle Summer Festival (Late July to Early August)

「天王洲アイル夏祭り」(7月下旬～8月上旬)

This large summer festival is divided into four separate areas where visitors can enjoy many different attractions such as a beer garden, stalls, and live music.

July

Kamishinmei Tenso Shrine Tanabata Festival (Early July)

「上神明天祖神社 セタ祭り」(7月上旬)

The "Hakuja no Hokora" (Shrine of the White Snake) in the shrine grounds is thought to be a source of mystical energy. The Tanabata decorations are beautifully illuminated throughout the festival, giving the shrine a magical atmosphere.

Sunflowers



July

Cosmos



September

Ginkgo leaves



November

August

October

December

August

Candle Night in Yashio (Early August)

「キャンドルナイト イン 八潮」(8月上旬)

This event was started to bring the people of the city together as well as to provide support for 2011 Great East Japan Earthquake recovery efforts and pray for the souls of the disaster victims. The many twinkling candles and electronic candles lined up along the canal transform the waterfront into a scene from a fairy tale.



Maple leaves



September

Meguro Sanma Festival

(Early September) 「目黒のさんま祭り」(9月上旬)

The festival celebrates the old tale of a feudal lord riding through Meguro getting his first taste of delicious sanma (Pacific saury). The flavorful fatty sanma—an autumn delicacy—are sourced from the tsunami affected port of Miyako in Iwate Prefecture and are grilled on the spot and handed out free to visitors.

September

Shinagawa Shukuba Festival (Late September)

「しながわ宿場まつり」(9月下旬)

The "Oirandochu" (procession of courtesans in full dress; held on Saturday evening) and the "Edofuzoku-gyoretsu" (parade of people dressed in costumes from the Edo Period; held on Sunday) are key attractions. Slip back in time to the Edo period and enjoy one of the largest festivals on the Shinagawa event calendar.

October

Shinagawa Yume-Sanbashi (Free Passage) (Mid October)

「しながわ夢さん橋」(10月中旬)

This event is held around JR Osaki Station during the consecutive holiday period with such holidays as Health and Sports Day. Find a number of local and regional culinary delights! There's oh so much fun to be had with a stage, local mascot events, and more!

November

Autumn Leaves in Ikedayama Park (November)

「池田山公園の紅葉」(11月)

Ikedayama has recently gained a reputation as a place steeped in otherworldly energy. This park is the remains of a residence belonging to the Ikeda clan feudal lord of the former Okayama domain, and has a circular garden centered around a pond with multiple levels in its terrain, letting visitors appreciate its seasonally changing beauty.

June

December

Oharai/Chinowa-kuguri (End of June/End of Year)

「大祓・茅の輪くぐり」(6月末・年末)

Chinowa-kuguri (the tradition of walking through and around a large grass "chinowa" hoop in a figure eight as part of a purification ritual) is carried out at most shrines in the Shinagawa area. The ritual is used to pray for sound health, and attracts many visitors who want to cleanse themselves of impurities at the end of the year.

Six Recommended Shinagawa Walking Routes

Route
1

Pilgrimage to Tokai Seven Deities of Good Luck

Approx. 4.5 km

Historical town home to the Tokai Seven Deities of Good Luck

This area has many elegant little streets and houses and contains the shrines and temples that are home to the Tokai Seven Deities of Good Luck. Stroll along the Former Tokaido Road—a relic of ancient times—and let the history of the area seep into your bones.

The Seven Deities of Good Luck are seven gods to whom people pray to keep them from misfortune.



This area's

Recommended drop-in spots

A zakka+café La capi

A rustic café selling handmade goods. The New York style cheesecake made with sour cream is a must.

1:30-4 Kita-Shinagawa
Sundays and Holidays
11:00-18:30 L.O.



B Shinagawa Kasho Kyo-An

品川菓匠 孝庵

A cake shop whose flagship product "Shinagawa Full Moon," a cake baked in the shape of a full moon, won best souvenir in the Shinagawa Souvenir competition in 2015.

2:30-27 Kita-Shinagawa
Tuesdays 9:30-20:00



C Bulldog

Established in 1949, this restaurant is filled with the retro ambience of that time. Appetizing, good-old rice-filled omelets and minced meat cutlets ready to burst are reasonably priced and popular items.



5-4-13 Higashi-Oi
Wednesdays and every 3rd Thursday
11:40-20:45 L.O.



Here are six areas chock full of fabulous places to see in Shinagawa.

Follow the routes on the illustrated maps and enjoy a lovely stroll through these interesting areas.

Don't forget to stop by the One Hundred Scenic Spots in Shinagawa on the way!



Featured Areas

You can feel
the history here!



D Aito Kato Goro Shoten Shop

アイトー加藤五郎商店

Find a vast number of things bringing more fun to your daily life and items offering a wide variety of lifestyle ideas in this spacious, 165-m² shop.



📍 2-7-8 Minami-Shinagawa 📅 Tuesdays 🕒 12:00-18:00

E Soba Restaurant Tachiaigawa Yoshidaya

そば会席 立会川 吉田家

Founded more than 160 years ago, this soba restaurant is famous for handmade juwari-soba (soba made from 100% buckwheat) and menu items that change with the season. For an extra special experience, choose the seats in the annex with the lovely Japanese garden.



📍 2-15-13 Higashi-Oi 📅 Tuesdays
🕒 11:30-14:00 L.O., 17:30-20:15 L.O. / Saturdays 11:00-20:15 L.O.
/ Sundays and Holidays 11:00-20:00 L.O.

F Yamaki Itoh

ヤマキいとう

Tea, Nori

A store founded in 1924 that handles tea from all over Japan and nori (seaweed) sourced directly from fishermen nationwide. The "haneppa" nori is highly recommended.



📍 2-28-1 Higashi-Oi 📅 Sundays 🕒 10:00-19:00

G Coffee Oka Garage

かふえ おかがれーじ

This café uses coffee beans that are so fresh and good they can be eaten as is. Each cup of coffee is made with the utmost care, from brewing to presentation.



📍 6-3-2 Minami-Oi
📅 Mondays and the last Tuesday of the month 🕒 14:00-23:30 L.O.

H Suijin-yu

水神湯

Suijin-yu is an old-style Japanese bathhouse with inviting features such as piping hot water and jet baths. It's close to the walking route too.



📍 6-9-10 Minami-Oi 📅 Saturdays 🕒 15:00-22:30



Note: A to H on each page indicate popular shops or facilities in the area. Opening hours are subject to change.

Route
2

Tour of Jonan Gozan (Five Hill Top Areas in Jonan)

Approx. 5 km

An exclusive residential area
in Tokyo
overflowing with history

Wander around this peaceful
area full of large houses and
embassies. With its undulating
geography, the views are excellent
and simply strolling around will
leave you feeling refreshed.

There are lots of
fashionable spots!



This area's Recommended drop-in spots



A Bread & Coffee IKEDAYAMA

A shop featuring homemade bread and home-brewed coffee. Offers many mouth-watering treats such as soft and fluffy pain de mie.

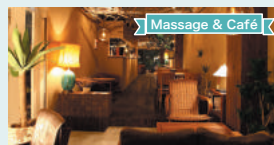
📍 5-10-18 Higashi-Gotanda ☑ New Year period
🕒 8:00-19:00



**B Grill F
グリルエフ**

This long-established western restaurant was founded in 1950. In addition to its retro appearance and classic menus, people flock to the restaurant for its secret sauce, which is based on a recipe that has been handed down through the generations.

📍 1-13-9 Higashi-Gotanda ☑ Sundays and Holidays
🕒 11:00-14:00 L.O., 17:00-20:40 L.O.



C Forest - Relaxation Salon, Café & Dining -

A new experience in relaxation. Pamper yourself and enjoy good food in a forest-themed environment. An excellent spot to take a rest from your walk.

📍 2F DAI Bldg. 1-32-3 Nishi-Gotanda ☑ Café
Sundays, Salon Irregular ☑ Café 11:30-21:00 L.O.
(Holidays: 20:00 L.O.) Salon 12:00-21:30 L.L. (Sundays
and Holidays 21:00 L.L.)



**D Da capo
ダ・カーポ**

A tai-yaki store beloved by its many fans. The fish-shaped pancakes are filled with overflowing with a special sweet bean jam made from Hokkaido red beans—and watch out for the surprise in the tail!

📍 1-3-10 Higashi-Gotanda
☑ Irregular 🕒 12:00-18:30 L.O.



Featured Areas



Chocolatier

E LES CACAOS

The proprietors of this specialty chocolate shop do everything themselves, from selecting and roasting the cocoa beans to refining the chocolate and creating the chocolate delicacies. Here you can enjoy a wide variety of chocolate delicacies that highlight the qualities of the beans from each producing area.

2-19-2 Higashi-Gotanda ☒ Tuesdays
11:00-19:00



Tea

F Tea House Mayoor Gotanda Main Store ティーハウス マユール 五反田店

This tea house focuses on Western tea. Find not only a variety of different Western teas and herbal teas at tea time, but also handmade scones.

2-20-7 Higashi-Gotanda ☒ Saturdays, Sundays
and Holidays 11:00-18:30 L.O.



Museum of Art

G O Art Museum O美術館

A multipurpose art museum that attracts art lovers and artists looking for a place to show their work. On the 2nd floor of Ohsaki New City, the museum is easily accessible by public transport.

2F Ohsaki New City Building, 1-6-2 Ohsaki
☒ Thursdays and the New Year period 10:00-18:00 L.L.



Café

H CAFE & HALL ours

In addition to a novel place to meet up with your friends, this café also doubles as a rental space. You can't go home without tasting the home-brewed coffee and delicious homemade bread.

1F Kita-Shinagawa Regional Exchange Facility, 5-7-2
Kita-Shinagawa ☒ Tuesdays 8:00-22:00 L.O.
(Saturdays, Sundays and Holidays 10:00-21:00 L.O.)



Route
3

Pilgrimage to Ebara Seven Deities of Good Luck

Approx. **6.5 km**

Experience the hustle and bustle of Old Tokyo

You will be drawn in by the warmth and human heart that are unique to the old downtown. As soon as you step away from the big road, you'll find yourself in a world of shrines and temples—so go for a stroll and drink up the atmosphere!

This area's Recommended drop-in spots



A cuission Lucca

A baked goods specialty store that uses no preservatives or additives. Sweets are baked regularly and are always hot out of the oven.

1C Hiraoka Mansion, 5-25-10 Koyama
Tuesdays 10:00-20:00



B GLOBE COFFEE

Freshly roasted coffee beans and delicious homemade sweets are at the heart of this popular café. The stylish Scandinavian inspired interior is also warm and inviting.

1B Hiraoka Mansion, 5-25-10 Koyama Tuesdays
10:30-19:30



C Rosse

This extremely popular store is known affectionately as "sunset puddings" because it sells out of its custard puddings and closes within an hour of opening in the evening.

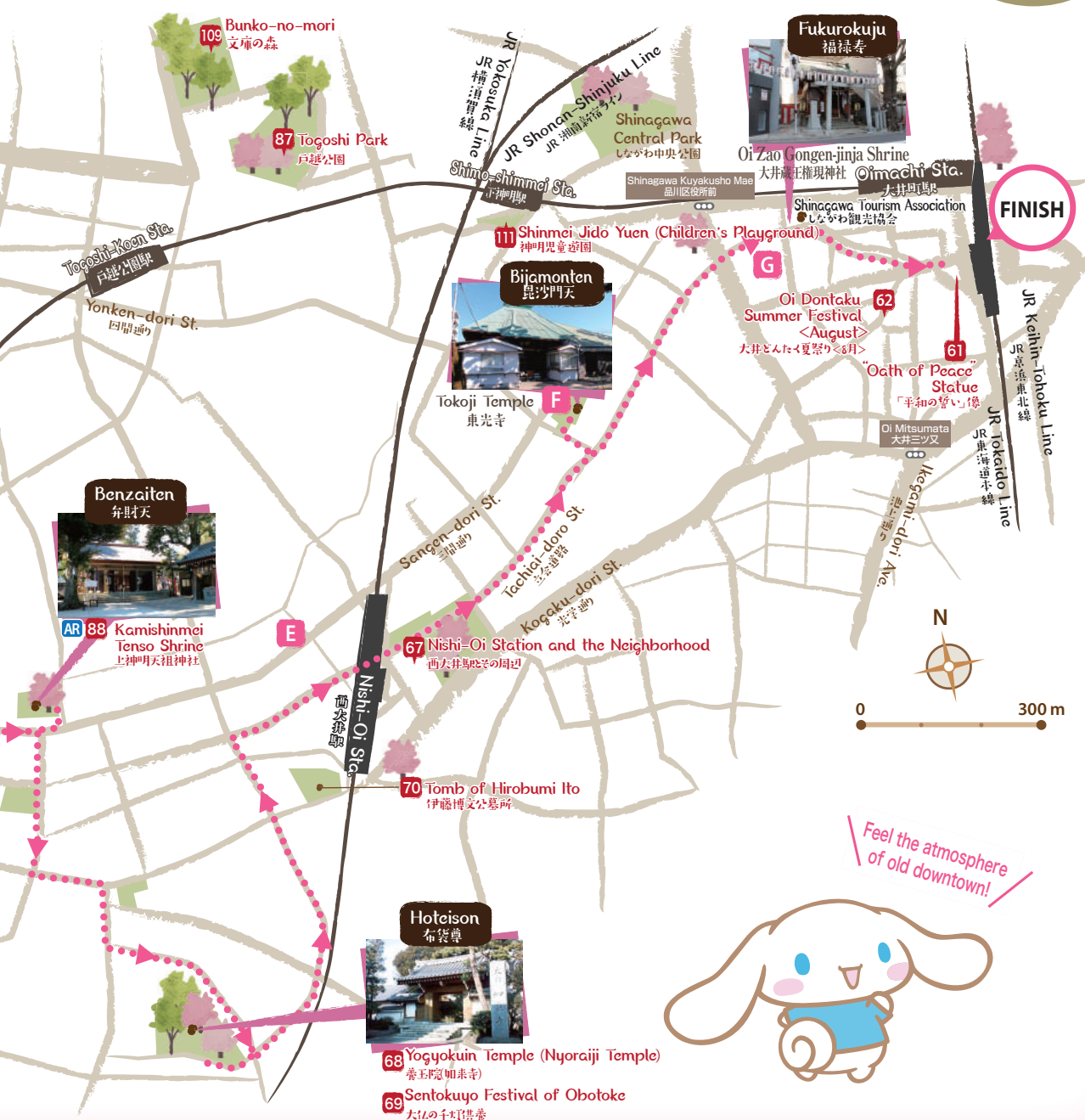
1-2-7 Nishi-Nakanobu January, February, July and August 17:00-17:45 (or earlier if stocks sell out)



D Mame no Sagamiya
豆のさがみや

Founded in 1935, this specialty bean store sells quality goods hand-made from select ingredients, including sugared red beans, bean confectioneries, and deep-fried rice crackers.

3-7-10 Nakanobu Wednesdays 10:00-20:00



Feel the atmosphere
of old downtown!



E Saishokubi TUKIHO

菜食美 つき朋

A "vegetable sommelier," the proprietor of this deli makes sure that only the freshest seasonal vegetables and most delicious ingredients are used in each dish. Watch also how the colors of the dishes change with the seasons.

3-6-6 Futaba ☒ Thursdays, Sundays, and Holidays
11:30-20:00



F Yoshokuya Kihei

洋食屋 喜平

This restaurant's chef is none other than the grandson of Kihei Sekizuka, the father of western cooking in Japan. The menu is chock full of classic western dishes such as roast beef.

1-14-23 Futaba ☒ Sundays and Monday afternoons
11:30-14:30 L.O., 18:00-21:30 L.O.



G Oedo Yoroi-Sembei Iwamoto Beika

お江戸 籠せんべい 岩本米菓

This store offers 3 kinds of squared arare (small rice crackers) symbolizing the three squares in the "品" (shina) character, packaged and grouped to form the "川" (gawa) character—coming together to represent "品川" or "Shinjuku". Be sure to try out these "Shinjuku Arare".

1-20-13 Oi ☒ Sundays and Holidays
9:00-18:30



H Fusion Ramen Jantaro

FUSIONラーメン 醬太郎

The main attraction is its mind-blowing collaboration between ramen made with the pork bone broth and soy sauce broth from popular ramen restaurants. Noodles for mixing and dipping are also available.

6-2-2 Yutakacho
☒ Mondays (Tuesdays when coinciding with a Holiday)
11:00-14:50 L.O., 18:00-24:50 L.O.

Tour of Shopping Streets

Approx. 2 km

Two quintessential shopping streets in Tokyo

The 800 m long Musashi-Koyama Palm Shopping Street and the 1.3 km long Togoshi-Ginza Shopping Street are so well known they are often featured in the media.

Lots of different shops to see!



This area's Recommended drop-in spots



A Shiki-no-Wakomono Hanashimizu
四季の和小物 花しみず

A one-stop-shop for Japanese variety goods, from yukata (summer kimono), jinbei (men's casual wear) and zori (Japanese sandals) to bags, furoshiki cloths and many other pretty accessories. The Japanese-themed interior is also very cute.

📍 3-24-5 Koyama 📅 Tuesdays and Wednesdays
🕒 11:00-19:30



B Lea FlowerShop

Purchase lovingly hand crafted flower arrangements made using preserved flowers and interior greenery. And fresh flowers too, of course.

📍 2-13-6 Hiratsuka 📅 Beginning of the new year
🕒 11:00-19:00



C Laugh Laugh Togoshi-Ginza Store
ラフラブ戸越銀座店

A specialty character goods store where you'll find all the classic characters from Disney, Sanrio, Ghibli and many more.

📍 1-16-9 Togoshi 📅 Obon Holiday, New Year period, etc.
🕒 11:00-19:00



D solco

This store specializes in salts from Japan and around the world, offering more than 40 varieties. The store also offers salty deli items letting you taste the subtle difference in salt types. You can even find salty sweets.

📍 1-3-13 Yutakacho 📅 Tuesdays and every 1st Monday
🕒 12:00-18:00

Waterside Tour Part 1

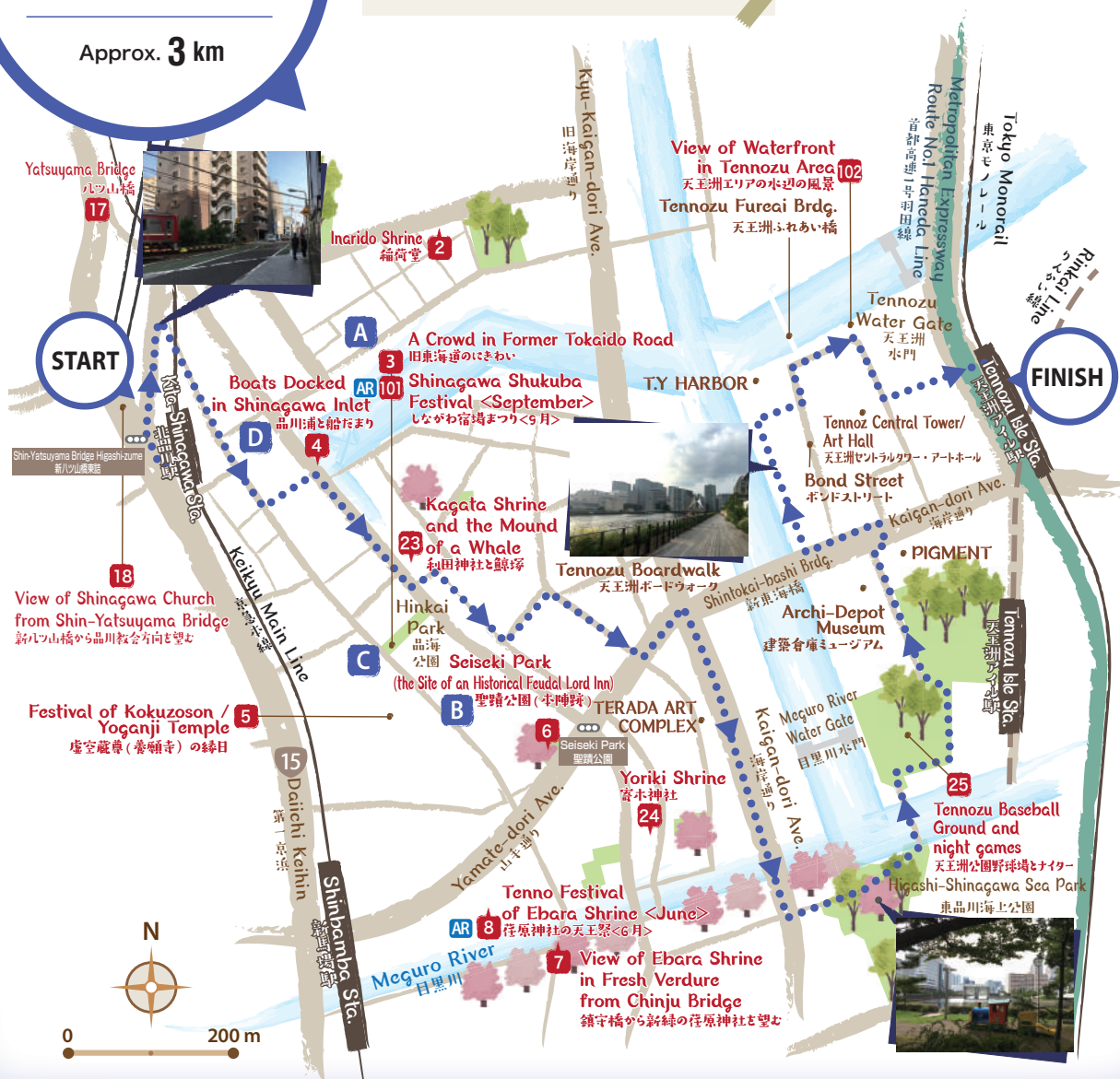
Approx. 3 km

The history and art of the waterside

Travel through time as you walk from the former

Tokaido Road area where traces of history still remain

to the vibrant, modern Tennozu area by the harbor.



This area's Recommended drop-in spots



A Handmade Soba Shinagawa Okina
手打ちそば しながわ翁

This famous soba shop appeared in the Michelin Guide Tokyo 2017. From husking the buckwheat seeds to serving up the delicious soba, all processes are performed in store.

1-8-14 Kita-Shinagawa ☒ Sundays, every 2nd, 4th, and 5th Monday, and some Holidays ☒ 11:00-14:00 L.O., 17:30-20:00 L.O. (Note: Mondays and Tuesdays, only open for lunch)/Saturdays and Holidays 10:00-14:30 L.O.



B ippikutou
一福桃

"Fukukasane" pancake and adzuki bean sandwiches freshly baked here are our specialty. Try tea and sweets sets along with much more in our 12-seat café space.

2-4-18 Kita-Shinagawa ☒ Irregular
☒ 10:00-17:00



C Senbei-dokoro Akioka
せんべい処 あきおか

Here you can find the delicious Shinagawa Maki arare (rice crackers) recommended by the Shinagawa Tourism Association. Many varieties of rice crackers are available. Take home an assortment as a souvenir.

2-2-8 Kita-Shinagawa ☒ Tuesdays
☒ 10:00-19:30 (Sundays and Holidays 10:00-18:00)



D Inokori Ren
居酒屋 連

People rave about our original dishes and home-style Italian cooking, created with an emphasis on being homemade. The restaurant itself acts as your own little hideaway.

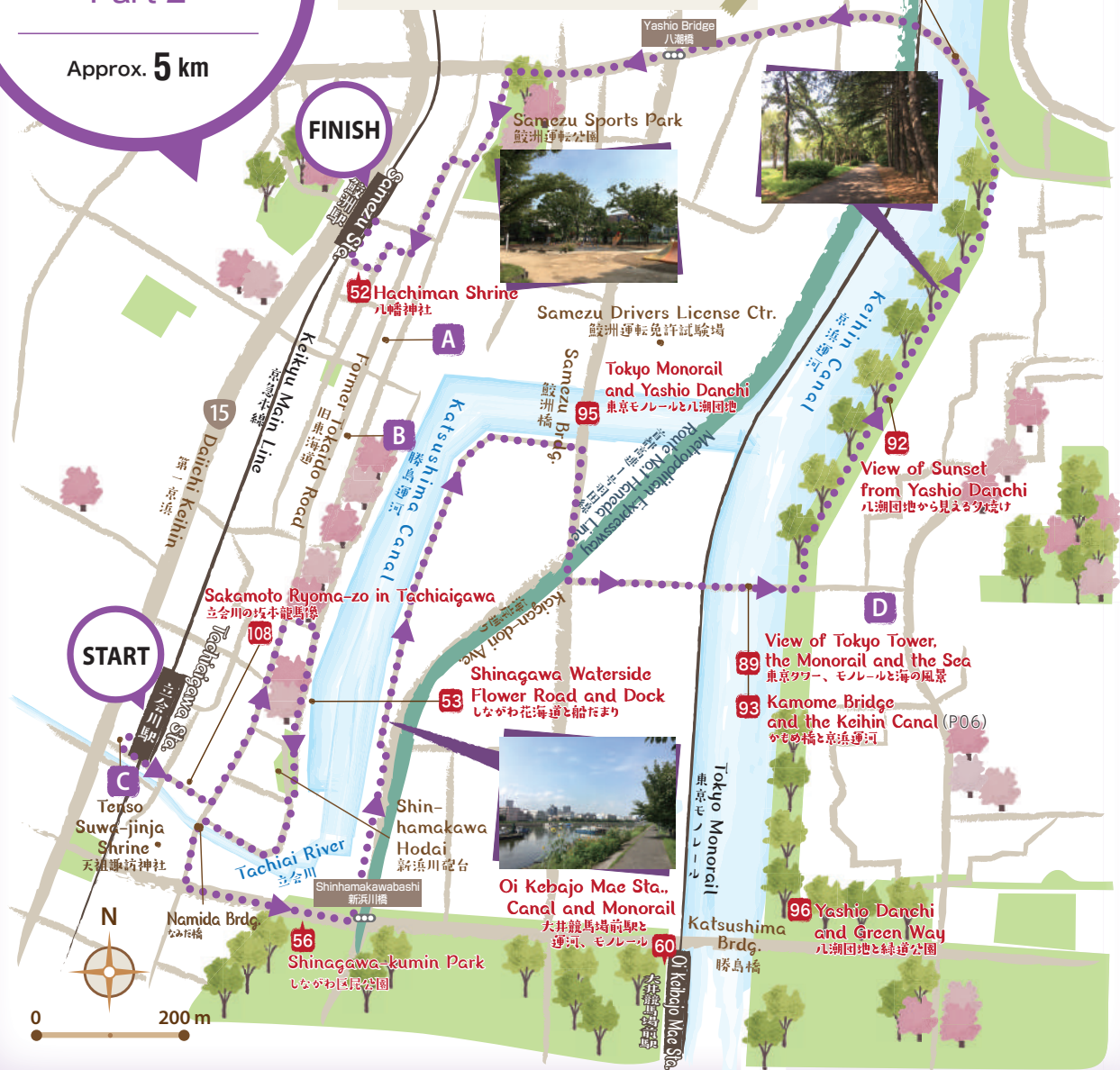
1-22-4 Kita-Shinagawa ☒ Sundays ☒ 11:30-13:30 L.O., 17:00-22:00 L.O. (Saturdays 17:00-21:00 L.O.)

Waterside Tour Part 2

Approx. 5 km

Stroll along the watersidelined with flowers and trees

Surrounded by beautiful flowers and with the breeze whispering in the trees, soak in nature as you stroll along the waterside. Don't forget to stop and take in the fabulous views from Kamome Bridge and Yashio Bridge.



This area's Recommended drop-in spots



A Suzunoya

鈴乃家

This is a small soba shop along the former Tokaido Road Old Tokyo-style "Anago-don" (conger eel rice bowl) is a particular favorite with customers. The generous portion of anago extending over the edge of the bowl will leave you more than satisfied.

1-24-13 Higashi-Oi ☒ Thursdays
11:00-14:00, 17:00-21:00



B Yakiniku Otochan Main Location

焼肉乙ちゃん本店

Operating as a meat wholesaler for 44 years, this yakiniku (barbecue) restaurant selects only the best and most delicious meat, regardless of locality or brand, and offers it to customers at very affordable prices.

2-5-13 Higashi-Oi ☒ New Year period
17:00-22:00 L.O. (Saturdays 16:00-22:00 L.O.
/Sundays and Holidays 16:00-21:00 L.O.)



C Cafe Lotty

Famous for its natural yeast bread, this café provides a place to sit back and relax, surrounded by the aroma of freshly baked bread and freshly brewed coffee.

2-23-2 Higashi-Oi ☒ Irregular
6:30-19:30 (Saturdays -17:00/Sundays and Holidays
8:00-14:00)



D Futsal Court Shinagawa

フットサルコート品川

Here are some of the largest roof-top futsal courts in Tokyo. Complete with shower facilities, the courts can be booked for periods starting from one hour. There's also a school that teaches futsal to players of all ages.

5-5-3 Yashio ☒ New Year period
11:00-21:00 (Saturdays and Holidays 10:30-21:00/
Sundays 9:30-21:00)

Make your Shinagawa experience even more fabulous with an AR* app!

*AR: Stands for augmented reality and refers to the technique of overlaying information about the environment and its objects on the real world.



How to Use

You can operate the app on the kokosil app portal site provided by Ubiquitous Computing Technology Corporation.

① Install the kokosil app.

Search for "kokosil" on the App Store (for iOS devices) or GooglePlay store (for Android devices) and install the kokosil app. You can also install the app by using the QR code.



② Start the kokosil app.



FREE

③ Search for "Wa! Shinagawa Tourist Spots"

Select "Wa! Shinagawa Tourist Spots (kokosil Shinagawa)" on the kokosil Select screen (screen for selecting the area you want).

Have fun with your photos on SNS

Frame your photos and show them to your friends on SNS.



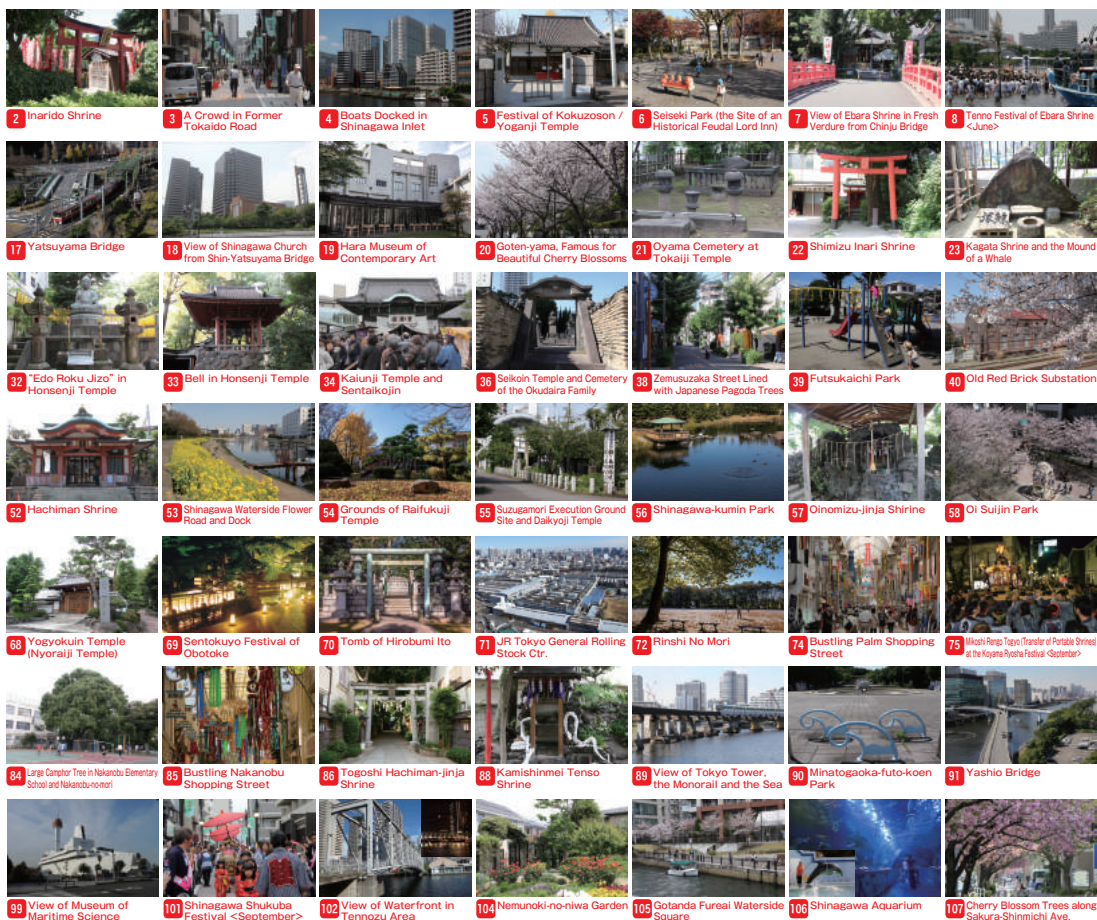
Notice

You are responsible for any mobile phone or data charges incurred while downloading the app or receiving data.

The app may not operate properly depending on factors such as your communication environment, device type, or OS type or version. Depending on the image, it may take some time for the AR camera (image recognition feature) to recognize an image.

<http://shinagawa.kokosil.net/en/>





One Hundred Scenic Spots in Shinagawa

Welcome to the new One Hundred Scenic Spots in Shinagawa spots for 2017 to reflect changes that have occurred since thirty years ago. We invite you to take a stroll and enjoy a life, history and culture of Shinagawa.

Focus your camera on pictures that show the AR mark.

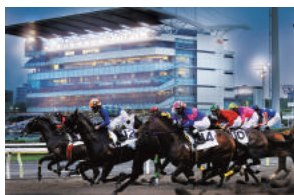
How to enjoy AR Install the kokosil app on your smart device and select "Wa! Shinagawa Tourist Spots (kokosil Shinagawa)". On the top screen, select "AR Camera (Image Recognition)" and focus your camera on a picture. See P.18 in this leaflet for details.



16 Kodomo-no-mori Park AR



43 Ikedayama Park AR



59 Night Races at Oi Keibajo AR



79 Bustling Togoshi-Ginza Shopping Street AR



87 Togoshi Park AR



97 Sports-no-mori (Oi Central Seaside Park) AR



103 Cherry Blossoms along



108 Sakamoto Ryoma-zo



Note:
The numbers of previous scenic spots that have disappeared are skipped over.

Recommended

Drop-in spots

Shinakan PLAZA



Shinagawa City's tourist information center. Drop in here to pick up area guide maps and leaflets, and find out about what's happening in the area.

1-14-1 Oi, Shinagawa City, Tokyo
9:30 AM to 5:00 PM
Sundays, national holidays, and New Year period
<https://shinagawa-kanko.or.jp/?lang=en>



Shinagawa-shuku Koryu-kan Honshuku Oyasumi-dokoro



A community center sponsored by Shinagawa City and run by the Kyu Tokaido Shinagawa-syuku Syuhen Machidokuri Kyougikai, a local organization that contributes to community activities. It serves as a free place to rest for visitors staying in Shinagawa-shuku and has other attractions such as a candy store, making it very popular with children.

2-28-19 Kita-Shinagawa, Shinagawa City, Tokyo
10:00 AM to 4:00 PM
Mondays (or the following day if Monday is a national holiday)
<http://shinagawa-syuku.net/base/>



One Hundred Scenic Spots in Shinagawa & Shinagawa Area Map



...al We've updated the hundred
the original spots were selected
fascinating look into the way of



the Meguro River



in Tachiaigawa

This is a comprehensive map including transport information and the main spots to visit in Shinagawa City. You can use this map as a reference for the leaflet, or remove it and use it by itself. Whether you want to tour the One Hundred Scenic Spots or simply go for a stroll, we hope this map will be useful for you.







Shinagawa Tourism Ambassador
cinnamoroll

© 2001, 2019 SANRIO CO., LTD.
APPROVAL NO. G682402

Issued by: Shinagawa Tourism Association
October 2019



<https://shinagawa-kanko.or.jp>