



Making Rugby Power into **Fuchu** Power!



Rugby World Cup 2015 Debriefing Meeting in Fuchu (November 2015)

Check below for the latest info!

[@rugbycity\\_fuchu](https://twitter.com/rugbycity_fuchu)



### About Fuchu

Fuchu is a city of about 260,000 people, located very near to the geographic center of Tokyo, Japan's capital. It has a fully developed transportation network that connects it to cities in Japan and around the world. In ancient times, a provincial government was set up here. The city boasts a long history of ancient traditions developed as the center of the province's politics, commerce, and culture. Although it is near the heart of Tokyo, Fuchu is also blessed with an environment of abundant water and greenery, including the Baba Daimon Zelkova trees, which are a designated national natural heritage, as well as the Tama River.

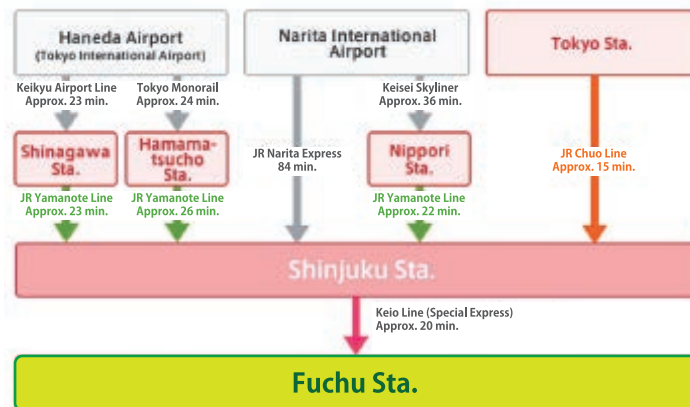
### Location of Fuchu

Fuchu is located about 22km west of Shinjuku.



### Directions to Fuchu

- Fuchu Station is about 20 minutes from Shinjuku by express train on the Keio Line.
- JR Fuchu Honmachi Station is about 35 minutes from Kawasaki on the JR Nambu Line.
- About 100 minutes from Narita Airport by car.
- About 50 minutes from Haneda Airport by car.



Rugby City Fuchu

TAKE FREE

# RUG-CHU!



More Fuchu with AR!  
See inside for details

Issued by **Rugby City Fuchu Promotion Committee**

Fuchu City Rugby Football Association  
Musashi Fuchu Chamber of Commerce  
Fuchu Tourism Association  
Toshiba Brave Lupus  
Fuchu City Shopping Street Alliance  
Suntory Sungoliath

Secretariat: Policy Section, General Affairs Department, Fuchu City

URL [www.rugbycity-fuchu.jp](http://www.rugbycity-fuchu.jp) TEL 042-335-4006


Issue Date: November 2018 (1st edition)



# Spot

## Chosen by Toshiba and Suntory players 10 Recommended Local Spots in Fuchu

For the nicest local places to go, it's best to ask the players who are always active in the city. They told us everything about the places they regularly go and recommend.

 Scan actress Rio Matsumoto with the app, and get a message from her!



### 01 Baba Daimon Zelkova Trees

A historic row of trees that stretches from the Okunitama Shrine

This is a historic location that was designated a national treasure in 1924, the second place to ever receive such a designation from the government. A total of about 200 zelkova and maple trees, including trees as old as the Edo Period, line the grounds and stretch about 600 meters north from the Okunitama Shrine. The tree-lined avenue is car-free on Sundays, when markets and other events are held at the avenue.

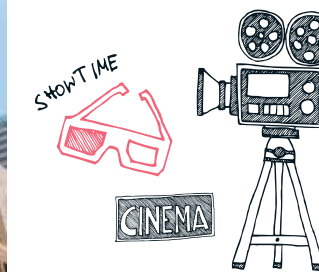
**Baba Daimon Zelkova Trees**

Around Miyaniishi-cho 1-chome and 2-chome

MAP B-2

A negative ion spot that is Fuchu's pride and joy!

Leitch Michael



Kururu's theater is my home theater!

Kensuke Hatakeyama

### 02 Shopping around the Station

Enjoy shopping, great food, and movies

The shopping facilities around Fuchu Station are always bustling from the weekdays through the weekend. The area includes the large department stores Le Signe, Kururu, Isetan, and Foris, each of which has its own feel and offers a large variety of goods. You can also enjoy food and leisure activities at the facilities.



**LE SIGNE**

Tel: 042-352-3663, 1-100 Miya-machi, Fuchu-shi  
Hours: Shopping 10:00am-8:00pm / Restaurants 11:00am-11:00pm  
\*Some restaurant hours may differ / Clinic 9:00am-8:00pm, open year-round

MAP B-2

**KURURU**

Tel: 042-368-0966, 1-50 Miya-machi, Fuchu-shi  
Hours: Shopping 10:00am-8:00pm / Restaurants 11:00am-10:00pm / Toys R Us 10:00am-9:00pm / TOHO Cinemas Fuchu 9:30am-end of last showing  
\*Some shop hours may differ, open year-round

MAP C-2

**Isetan Fuchu**

Tel: 042-334-1111, 1-41-2 Miya-machi, Fuchu-shi  
Hours: 10:00am-7:00pm / EAT PARADISE (Restaurants) 11:00am-10:00pm

MAP B-2

**Foris**

Tel: 042-364-4141, 1-41-1 Miya-machi, Fuchu-shi  
Hours: Forest-side Table 10:00am-9:00pm

MAP B-3



### 03 Tokyo Racecourse

A fun place the whole family can enjoy

Tokyo Racecourse is where the Japan Derby horseracing event is held. It's a place the whole family can enjoy all day. Here you'll find the Horseracing Museum, where you can find out about horseracing history and enjoy fun attractions, a park with playground equipment for kids and a fountain, and a riding center.



My kids love it here, too!

Takuma Asahara

**Tokyo Racecourse**

Tel: 042-363-3141, 1-1 Hiyoshi-cho, Fuchu-shi  
Hours: 9:00am-5:00pm Race Days / 10:00am-12:00pm & 1:00pm-4:00pm weekdays (excluding Mondays, Tuesdays, national holidays, New Year holidays, and special holidays), admission: 200 yen (free for children under 15 and on race days)

MAP D



### 04 Okunitama Shrine

Shrine with 1,900 Years of History

This ancient shrine dating from 111 AD is one of Tokyo's greatest shrines. It has brought many people of faith together since ancient times. The enshrined deity here is Okunitama no Okami. Many festivals and events are held at the shrine, including the Kurayami Matsuri (Darkness Festival) in May.

**Okunitama Shrine**

Tel: 042-362-2130, 3-1 Miya-machi, Fuchu-shi  
Hours: From April 1 to September 14: 6:00am-6:00pm / From Sept. 15 to Mar. 31: 6:30am-5:00pm, open year round

MAP B-3

Come here before the match to pray for victory!

Yutaka Nagare







**Tama Road Shopping Street**

**Fuchu 35-bangai Shopping Street**



**Tama Eki Shopping Street**

## 05 Shopping Streets

Each shopping street around Fuchu has its own personality

There are many shopping streets around Fuchu that offer, in addition to shopping, the perfect spots for lunch and dinner. You'll surely find what you are looking for, from mom-and-pop fruit, vegetable or fish shops popular with the locals, to fashionable stores that may catch your eye.



It's super-convenient! They have what you need.

Hayata Nakao

**Tama Road Shopping Street**  
3-24-16 Shimizugaoka, Fuchu-shi  
MAP F

**Fuchu 35-bangai Shopping Street**  
1-5-7 Fuchu-cho, Fuchu-shi  
MAP C-2

**Tama Eki Shopping Street**  
2-29-1 Asahi-cho, Fuchu-shi  
MAP J



## 06 Suntory Tokyo-Musashino Brewery

Enjoy learning about the brewing process, from prepping to packaging

This is Suntory's first beer brewery, established in 1963, and the birthplace of The Premium Malts. At the brewery, you can learn about the beer manufacturing process, including preparation, fermentation, and filtration. The tasting time at the end of the tour featuring a freshly poured brew is also quite popular.

The best way to show a VIP around Fuchu is visiting the brewery and then the clubhouse.

Shinya Makabe

**Suntory Tokyo-Musashino Brewery**  
Tel: 042-360-9591, 3-1 Yazaki-cho, Fuchu-shi  
Hours: 9:30am-5:00pm / closed New Year holidays, brewery off-days (there are also special holidays)  
\* Free shuttle buses are available from Bubaigawara Station on the JR Nambu Line and the Keio Line.  
MAP D



## 07 Kyodo no Mori Museum

The museum and planetarium are among the many highlights

The entire nature-filled 140,000m<sup>2</sup> of these vast premises is one big museum. Here you will find expressions of Fuchu's natural features and topography, as well as historic and cultural assets. Among the attractions, the impressive planetarium, which was renovated in May 2018, is immensely popular with children.



Takahiro Ogawa

The planetarium is beautiful.

**Kyodo no Mori Museum**  
Tel: 042-368-7921, 6-32 Minami-cho, Fuchu-shi  
Hours: 9:00am-5:00pm (last entry 4:00pm), closed: Mondays (in the case of holiday Mondays, the planetarium is closed the following day instead) and December 29 - January 3.  
Admission: Adults 300 yen, junior high school students and younger 150 yen, free for children under the age of four. \*Terms differ depending on the facility.  
MAP D



## 08 Daitokyo Sogo Oroshiuri Center

The largest wholesaler in the Tama region offering fresh seasonal food

Gathered here are about 70 shops selling mainly fresh fish, meat, fruits, vegetables, and other fresh food items, along with daily necessities and sundries. With large assortments of products lined up on both sides of a narrow aisle, it's fun just to walk up and down and look. Don't miss the eateries here, which are also frequented by people who work in the center.



**Daitokyo Sogo Oroshiuri Center**

Tel: 042-364-8211, 4-1 Yazaki-cho, Fuchu-shi  
Hours: Depend on the seller, closed: Sundays, national holidays (except for national holiday Saturdays), and some Wednesdays (irregular)  
MAP D



## 09 Fuchu no Mori Park

A family sports park with a forest, hills, and a waterside

This large park, which is home to a baseball field, soccer field, tennis courts, and other sports facilities, as well as a space for barbecues, is loved by families as a place to have fun. It is also well known as a major spot for cherry trees in Fuchu, and bustles with cherry blossom viewers in the spring.



I love just walking around this place.

Hitoshi Ono

**Fuchu no Mori Park**  
Tel: 042-364-80211, Sengen-cho, 2 Midori-cho, 2 Tenjin-cho, Fuchu-shi  
Tokyo Metropolitan Foundation Park Association  
MAP H



## 10 Tama River (Fuchu Tamagawa Kaze no Michi)

Enjoy the open atmosphere on the riverside

This is a 9.4-kilometer promenade built along the Tama River. You can walk, jog, or cycle while taking in the nature around you. The Fuchu-Tamagawa Marathon is held here, and residents can also enjoy playing sports themselves at one of the baseball or soccer fields along the river.



I work out on the jogging course on my off days.

Kazutaka Ashida



**Tama River (Fuchu Tamagawa Kaze no Michi)**  
From Yotsuya to Oshitate-cho in Fuchu-shi  
MAP D



# Food

# This is what we eat in Fuchu!



Scan the AR images to pick up limited-time discount coupons for use at restaurants.

- ◆ Download the coupon image you want and then use it.
- ◆ Good for one-time use for one person only.
- ◆ Deals and period of use differ according to the shop.
- ◆ This service may be cancelled at the discretion of the shop.

The players are based in Fuchu, so they should know a lot about places to eat in the city! They told us about places to eat for various situations, including lunches, meetings, and meals with the family.

Stamina building!

High-volume!



## 01 Western-style food

### Restaurant Hustle

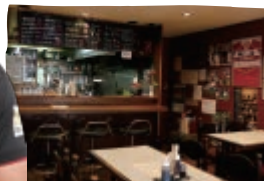
Take a chance and order the "hustle menu"

The high-volume menu items here are perfect for athletes. You better make sure you are very hungry, and then go for the famous "Hustle-don" rice bowl, which includes a pork cutlet, an omelet, and a hamburger steak. They say a higher percentage of women can finish this dish than men.



Try the extra-large portion!

Takuya Kitade



**Restaurant Hustle**  
Tel: 042-368-4555,  
2-20-13 Kata-machi, Fuchu-shi  
Hours: 11:30am-2:00pm / 5:30pm-10:30pm (Last order 10:20pm), closed: Sundays and national holidays  
MAP E

## 02 Steak

### Ikinari! Steak Fuchu Eki-mae Shop

If you want a steak, this is the place

This popular steakhouse is known for its stand-up eating style. The meat is sold by weight in grams, and it is cut to order. We recommend the larger sizes over 300g. Put on some special sauce and get to work eating!

Ample filling!

Shinnosuke Kakinaga



**Ikinari! Steak Fuchu Eki-mae Shop**  
Tel: 042-319-9929, 1-100 Miya-machi, Fuchu-shi  
Hours: 11:00am-11:00pm (last order 10:45pm), open year-round  
MAP B-2

## 03 Sports Bar Shuku Bar Machi

Enjoy plenty of satisfying drinks with a high-volume meal!

Enjoy drinks and food while watching sports events from Japan and around the world. A featured menu item is the huge Megaburger, an 800-gram, triple-decker "hamburg steak," which comes in three flavors—demiglace, garlic-mayo, and tomato-avocado.



I treat myself here after a match.

Takuma Asahara

**Shuku Bar Machi**  
Tel: 042-340-0666, Urano Bldg. 2F, 1-5-7 Fuchu-cho, Fuchu-shi  
Hours: Lunch Mon-Sat 11:00am-4:00pm / Dinner Mon-Thu 4:00pm-4:00am, Fri-Sat 4:00pm-5:00am, Sun-holiday 4:00pm-1:00am, open year-round  
MAP C-2

## 04 Soba Manzo-an

A beloved local shop run by three father-son generations

The tasteful interior exudes a relaxed atmosphere of woody warmth. Buckwheat delivered to the shop is milled daily on the premises on a stone mill. When you want a big meal, *katsu kare namban*, their popular soba dish that piles melted cheese and *katsu* (pork cutlet) curry on top, is the item to order.



Highly recommended soba noodles!

Hiroshi Yamamoto

**Manzo-an**  
Tel: 042-362-4590, 2-4-7 Wakamatsu-cho, Fuchu-shi  
Hours: 11:00am-3:00pm & 5:30pm-8:30pm, closed Tuesdays  
MAP H

If you're going to eat in Fuchu...

## Soul food

### 01 Udon

#### Kisaburo

Exquisite *udon* made with uncompromising ingredients

This shop uses very firm flour from Hokkaido and absolutely no artificial flavors in its *udon*, which is delicate and made with the finest salt and soup stock ingredients. The *bukkake udo n* is a must-taste dish topped with *kakiage* tempura of sakura shrimps directly shipped from Suruga Bay.

I eat here once a week. My kids love it, too.

Takahiro Ogawa



**Kisaburo**  
Tel: 042-336-7801, 3-3-3 Miyoshi-cho, Fuchu-shi  
Hours: 11:30am-2:15pm (last order 2:00pm) / 5:30pm-8:30pm (last order 8:00pm), Sat-Sun-holidays: 11:30am-2:30pm (last order 2:10pm) / 5:30pm-8:30pm (last order 8:00pm), closed: Tuesdays, 3rd Wednesday of each month  
MAP E



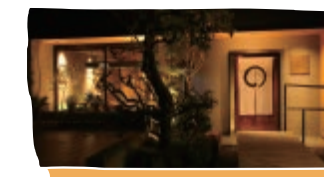
## 02 Soba

### Suzuya Have a relaxing time at this famous shop that has been around for 50 years

This shop serves mainly soba made with seasonal ingredients, but also has a full menu of rice dishes and a la carte items that go perfectly with sake. We recommend the *buta shogayaki gozen* (ginger pork set meal), which offers a nice balance between meat and vegetables and an ample portion. Suzuya has Japanese-style seating, tables with chairs, and private rooms to provide the dining situation best for you.

Well-balanced set meals are perfect for lunch.

Takaaki Nakazuru



**Suzuya**  
Tel: 042-361-3834, La Bella Koremasa, 5-7-25 Koremasa, Fuchu-shi  
Hours: 11:00am-2:00pm / 5:00pm-8:30pm, Sundays and national holidays 11:00am-7:30pm, closed: Thursdays  
MAP D

## 03 Beef barbecue Horumon Daigaku

Community-based barbecue spot known locally as "Horudai"

This restaurant has been open for 47 years and features tongue, rib, belly, entrails, and other cuts at reasonable prices ranging in yen from the 200s to the 500s. It still has vestiges of its origins as a Chinese restaurant, including ramen and fried noodles, which are also house specialties.



Salted belly meat with a lemon sour is a divine combination!

Shuhei Oshima

**Horumon Daigaku**  
Tel: 042-363-1715, 1-40 Miyoshi-cho, Fuchu-shi  
Hours: 5:00pm-11:00pm, closed: Mondays  
MAP E

## 04 Soba Ishikawa

A menu full of originality

The popular Ishikawa is one of Fuchu's top soba shops. The noodles include handmade *nihachi* soba (made from 20% wheat flour and 80% buckwheat flour) and *inaka* soba (dark, thick and fragrant) that uses buckwheat from Hokkaido. The unexpected menu items cheese *oyakodon* (bowl of rice topped with chicken, eggs, and vegetables) *awase* and miso *katsudon* (pork cutlet on rice coated with miso sauce) *awase*, both of which come with soba, are also popular with the rugby players.



The unlikely combo of cheese and oyakodon is delicious.

Satoshi Oshima

**Teuchi Soba Ishikawa**  
Tel: 042-361-7961, 1-14-3 Miyoshi-cho, Fuchu-shi  
Hours: 11:15am-3:00pm & 5:00pm-9:30pm (last order 9:00pm), Sundays: 11:00am-3:30pm & 5:00pm-9:00pm (last order 8:30pm), closed: Mondays  
MAP E



Come here the night before your day off!

## Reward yourself!

01 Grilled horumon (entrails)

### Horumon Torokaku Highball Nakamura

High-quality meat at a reasonable price

Here you can eat fine quality meat at a reasonable price. With a few exceptions, every food and menu item costs only 500 yen (tax excluded). The fact that the basic flavor used for their grilled food is simple salt shows the confidence they have in their ingredients. The belly meat, which is plump but soft and practically melts in your mouth, is particularly delectable. The great rugby head coach Eddie Jones is one of the many who love this establishment.

Horumon Torokaku Highball Nakamura

Tel: 042-333-3002, 2-1-8 Fuchu-cho, Fuchu-shi  
Hours: 5:00pm-1:00am (last order: midnight), closed occasionally  
MAP C-1

You'll get hooked on the raw egg over rice.

Shunta Nakamura



02 Simple traditional Japanese dishes

### Waraku Yoitake

Enjoy cuisine with the taste of the seasons

Carefully selected seasonal ingredients are used copiously to form creative dishes infused with the owner's originality. They are especially particular about the fish, which are always fresh and natural, and directly sourced from around Japan, including Hyogo, Tottori, and Ehime prefectures. The liquor is also well-stocked and includes Japanese sake for each season and unique types of *shochu* liquor that you probably won't see anywhere else.

You can't go wrong with the chef's recommendations!

Hitoshi Ono

Waraku Yoitake  
Tel: 042-369-3241, West A Bldg. 1F, 1-17-3 Miyanishi-cho, Fuchu-shi  
Hours: 5:30pm-12mid (last order 11:30pm), closed: Wednesday  
MAP A-2

03 Ramen

### Mensoken Kurenai

Thickly-cut ramen in deliciously spicy soup

If you want hot spicy ramen in Fuchu, this is the place—Kurenai Ramen, the #1 spicy ramen shop in the city. They create a rich broth by boiling a mix that includes pork bones, a whole chicken, and chicken legs, for 12 hours. To this, they add thickly-cut homemade ramen noodles. The ramen mixes exquisitely with the soup to become not merely spicy but a delicious masterpiece of flavor. You can also order the spicier version called *oni kurenai* ramen, as well as *kurenai tsukemen*, which serves the noodles separately to be dipped in the broth and eaten.

When you want a substantial meal!

Hayata Nakao

Mensoken Kurenai  
LE SIGNE 1F, 1-100 Miya-machi, Fuchu-shi  
Hours: 11:00am-10:30pm (last order), open year-round  
MAP B-2

04 Yakitori

### Yakitori Daikichi

Uncompromising from prep to grilling

These *yakitori* establishments, open in four different locations, are uncompromising in their everyday skewering, grilling the items just right, and preserving the sauce that has been handed down over 40 years. We recommend the Premium Malts draft beer, which the owners went to the brewery to learn how to pour, and the *takohai shochu* and soda drink that is supposed to bring good fortune.

After the game, I recover by eating lots of yakitori!

Hitoshi Ono

Yakitori Daikichi Four locations in Fuchu  
Higashi Fuchu: Tel: 042-333-9133, 3-9-1 Midori-cho, Fuchu-shi  
Fuchu Koyanagi: Tel: 042-369-3480, 1-1-3 Koyanagi-cho, Fuchu-shi  
Fuchu: Tel: 042-369-3953, 3-22-2 Miyoshi-cho, Fuchu-shi  
Bubaigawara: Tel: 042-369-5220, 3-7-22 Miyoshi-cho, Fuchu-shi  
Hours: 5:00pm, closed: Days differ by location  
MAP

A taste of elegance!

## Fashionable!

01 French confectioneries & café / Italian restaurant

### Monamour Seifudo Honten

150 years of history—A path walked with the city

The calm and relaxed classical interior befits this venerable eatery, which opened back in the Meiji Era. The menu features Italian food made with an abundance of fresh seasonal seafood shipped directly from the port of Kanazawa in Ishikawa prefecture. Enjoy an elegant experience in the café with cake and a drink.

This place is reliably delicious!

Kenta Tsukamoto

Monamour Seifudo Honten

Tel: 042-361-9774 (French confectioneries & café) / 042-360-1060 (Restaurant), 2-1-1 Miya-machi, Fuchu-shi  
French confectioneries and café hours: 10:00am-10:00pm  
Restaurant hours: 11:30am-3:00pm & 5:00pm-10:00pm (last order 9:00pm) / Sat-Sun-holidays: 11:30am-10:00pm (last order 9:00pm), open year-round  
MAP B-3



02 Vietnamese food stall cuisine

### Viet Nam Yatai Tanzan

Enjoy the authentic flavor and atmosphere

You'll think you wandered into Vietnam when you go in and experience the "food stall" vibe. The true taste of Vietnam is here, with lots of vegetables prepared with coriander and other spices procured straight from Vietnam. The *bun bo hue* (spicy rounded noodles in boiled beef soup) is highly recommended. You will certainly get hooked on the great taste of the tender simmered beef and *al dente* noodles.

I often eat lunch here on weekdays.

Daigo Hashimoto

Viet Nam Yatai Tanzan

Tel: 042-403-9787, City Mansion 1F, 1-20-4 Miyoshi-cho, Fuchu-shi  
Hours: 11:30am-2:30pm & 5:30pm-11:00pm (last order 10:30pm) \* Only Lunch is available on Mondays, closed: Sundays, occasionally on other days  
MAP E

03 Western-style confections

### Patisserie Ourson

These cakes make the perfect snacks

This sweets shop prides itself on being popular with people of all ages, from little children to the elderly. Here you can enjoy shortcakes, cheesecakes, and other familiar cakes at reasonable prices. *Yume tamago* cake, made with specially selected eggs, is popular.

I frequent this place for birthdays and other events!

Yu Chinen

Patisserie Ourson  
Tel: 042-363-5888, 1-67-8 Shin-machi, Fuchu-shi  
Hours: 10:00am-7:30pm, closed: Tuesdays  
MAP G

04 Café/Bar

### CAFFÉ & BAR ipini

Spend a relaxing time for any occasion

This stylish cafe-bar can be enjoyed in many situations, including for lunch, coffee/tea, and dinner. The menu includes pasta dishes such as the rich and delicious penne gorgonzola with parmesan cream sauce, as well as salads and desserts. We also recommend taking it easy and relaxing here with a glass of wine or beer.

The wine goes great with the cuisine.

CAFFÉ & BAR ipini

Tel: 042-302-2100, 2-30-4 Miya-machi, Fuchu-shi  
Hours: 11:00am-8:00pm (last order 7:30pm), closed: Mondays  
MAP C-3

Shinsuke Nakamura



# This is Rugby Town Fuchu

## Home to two teams from Japan's Top League

The Fuchu Derby Match, which pits the city's two rugby teams against each other, is famous as a top match that attracts attention not only in Fuchu, but all over Japan.



Team Player



Toshiba Brave Lupus is packed with players who have great physical strength. Among them are current Japan National Rugby Team captain Michael Leitch, Takuma Asahara, who starred for the Sunwolves and the Japan national team in 2017 and 2018, and Yoshitaka Tokunaga.

## Toshiba Brave Lupus



Team History

Team founded in 1948. In 1987, wins its first Japan Company Rugby Football Championship. In 1996, wins first of three consecutive All-Japan Championships. Establishes its dominance in 2004-2005 and 2005-2006 by winning two straight Japan Rugby League Championships. The name "Lupus" comes from the Latin word for wolf. It evokes the image of a team that operates as a united pack, with precision, drive and a taste of wildness, along with a "Brave" play style.

The Brave Lupus use traditional standing rugby, an aggressive forward-pressing approach in their practices, which are famous for their intensity. Ordinarily, practices aren't open to the public, but you can go see practice matches at the Toshiba Fuchu Ground.

MAP E



Pick up a replica jersey and a muffer towel and cheer them on! Join the team's Brave Mate fan club and gain access to exclusive privileges.



**"The strength of our powerful play is the way we use our physical strength to constantly move forward. This is rugby at its essence."**

Toshiba Brave Lupus is synonymous with power rugby. The team has always competed by using physical might to constantly push forward. We have a lot of players who display their abilities in the scrum and other set plays that are the epitome of rugby. Many of our players have gone on to join the Japanese and New Zealand national teams, including the current captain of the Japan national team, Michael Leitch, and Hitoshi Ono, who holds the Japan national team record for most caps. I hope you come out and get to watch these players advance the ball with all their might.

Captain

*Richard Kahui*

Born 9 June 1985 in New Zealand. After playing with the New Zealand Super Rugby team the Chiefs, Kahui contributed to the national squad's championship at RWC 2011. In 2013, he joined Toshiba Brave Lupus. His position is center (CTB). Kahui became captain in 2017 and now leads the team. He is also speaking better Japanese every year.

©Afla Sport



Team History

Team founded in 1980. In 2003, participates in the Japan Rugby Top League for the first time, going on to win five championships, tying the record for most championships won. Goes undefeated in 2016-2017, and wins championship again in 2017-2018. In 2018-2019, will go for their first three-peat. The team name comes from the "sun" of Suntory and "goliath," the word for giant. The goliath part symbolizes toughness, tenderness, and spirituality.



You can watch them practice at their home ground, the Suntory Fuchu Sports Center. At the new comfortable clubhouse, you can catch a glimpse of the team in a non-match situation. No reservations are necessary—just check the practice schedule in advance.

MAP D



There is plenty of original merchandise, including stuffed Sungoliath mascot toys and caps. Joining the fan club will gain you access to certain merchandise at discount prices.

## Suntory Sungoliath

Team Player



On the team are many great players who excelled on the Japanese national team at RWC 2015 in England, including Kensuke Hatakeyama and Shinya Makabe, who support the team with their powerful play; Kosei Ono, who drives the team with his clever strategy; and Kotaro Matsushima, who has grown into a key player of the squad with his overpowering physical ability. The captain is Yutaka Nagare, who also captains the Sunwolves in the Super Rugby competition. The team also has international players such as Matt Giteau and Sean McMahon, and strives to maintain international standards and constantly evolve as a team.

**"We'll keep polishing our traditional attack rugby, constantly improve, and go for a third consecutive championship."**

The Sungoliath plays an aggressive attack rugby style. Amid changing trends in rugby, this team always strives to maintain international standards and constantly evolve. We are particular in our approach to scrums, lineouts and other set plays, and we go for tries using a variety of attacks that mix passing, running, and kicking. I believe watching the Sungoliath play is perfect for you if you are unfamiliar with rugby, because watching us will give you a sense of all the interesting facets of the game.

Captain

*Yutaka Nagare*

Born 4 September 1992 in Kurume city, Fukuoka prefecture. In his senior year at Teikyo University, Nagare captained the rugby team and led it to the college rugby championship. His position is scrum half (SH). He joined the Suntory Rugby Club in 2015, became captain in his second year and led the team to consecutive championships. Nagare is a fixture on the Japan national team, the Sunwolves, and will lead his team as it aims for a third consecutive championship in the new season.







# First Time in Asia! Let's enjoy Rugby World Cup 2019™, Japan!



Japan's fine run at RWC 2015 in England is still fresh in memory. Now you can experience the same excitement in Japan, as it becomes the first Asian country to host the competition at Rugby World Cup 2019™. Over the roughly seven weeks of match play, you'll have opportunities to see all the drama and powerful action on the field up close.

## Rugby World Cup



Rugby World Cup 2019™ Ambassador  
Tsutomu Matsuda talks about rugby's allure.

**Let's make this great rugby festival even more exciting!**

### PROFILE

Rugby World Cup 2019™ Ambassador Tsutomu Matsuda was born in 1970. He played rugby for Soka High School in Saitama prefecture and was selected to play on the Japan national team while a student at Kanto Gakuin University. Starting with the second Rugby World Cup in 1991, he has represented Japan in four RWC tournaments. He joined Toshiba Fuchu, and helped forge the company team's golden age. Matsuda retired at age 42 after the 2012 season. Since then, he has worked to popularize rugby, having led the Brave Lupus Fuchu Junior Rugby Football Club and the women's club Brave Louve.

**"The world's eyes will be on RWC 2019.  
Let's participate together as a city and have fun!"**

What impressed me in the four RWC's I experienced was the mood in each host city—the whole place was enjoying the event. In the town where our camp was, I was treated warmly in any shop I wandered into, and on match days, the town was a sea of people wearing the home country's team's jerseys. At RWC 2019, I really hope the area around the Tokyo Stadium will also be full of people wearing the competing teams' jerseys. Fuchu will host the English and French national team camps, and I believe the best hospitality will be to give shouts of encouragement to the players.

**"Expect intense battles between the competing teams.  
People of Fuchu, let's get out to the stadium!"**

I couldn't believe when Japan was made the host of RWC 2019. I expect great battles between all the teams, and as a rugby fan myself I want to make it out to as many matches as possible. Since RWC 2019 will be held at Tokyo Stadium, which is close enough to access by train or bicycle, I truly want the people of Fuchu to get a taste of the atmosphere of this great stage. I hope they will experience the Rugby World Cup not only as a competition, but also purely as a festival, by going to the Fan Zone and enjoying the events, food and drink, and having a hands-on experience playing rugby.

## Rugby World Cup 2019™ : The Basics

The first RWC in Asia will be hosted by Japan!

The first Rugby World Cup was held in 1987. As the tournament that determines the world champion in 15-man rugby, this is a huge event that excites not only rugby fanatics but also sports fans all over the world. Along with the Summer Olympics and the FIFA World Cup, RWC is one of the world's top three sporting events. With Japan hosting the first ever RWC in Asia, rugby is sure to take off even further as a global sport.

### Dates

### From 20 Septemberto 2 November, 2019

Opening Match: Friday, 20 September, Japan vs. Russia, @ Tokyo Stadium  
Championship Match: Saturday, 2 November @ International Stadium Yokohama

### How many teams will appear?

How many teams will appear?  
12 teams that earned the right to play during the last RWC, plus 8 teams that will earn the right to play in the preliminary round.  
Total: 20 teams

### What is the match format?

Japan already earned its spot by virtue of its record at the last RWC!  
1) Pools phase: 4 pools of 5 teams (round-robin tournament in each pool): 40 matches  
2) Knock out phase: Quarter-finals, Semi-finals, Bronze final, Championship match: 8 matches

## The Webb Ellis Cup

The name comes from the origin of rugby

### Championship Trophy: The Webb Ellis Cup



### Past CHAMPIONS

1987 New Zealand	2003 England
1991 Australia	2007 South Africa
1995 South Africa	2011 New Zealand
1999 Australia	2015 New Zealand

The Webb Ellis Cup is the trophy awarded to the winner of the Rugby World Cup. The name comes from William Webb Ellis, who is said to have invented rugby while still a teenager. The story goes that in 1823, when Webb Ellis was a student playing in a game of football (before it became known as soccer) at the Rugby School, a public school in England, he disregarded the rules and ran while holding the ball in his arms, and this episode resulted in the birth of rugby. The trophy was made in 1906 and is made of solid silver. Each winner of the past eight RWC championships has earned the right to hold the cup.

## 8 matches will be held at Tokyo Stadium!

Matches will be held in 12 cities throughout Japan, from Sapporo in the north to Oita in the south. Eight matches, including the Japan national team's opening contest, will be played at Tokyo Stadium, which is nearby Fuchu. The same venue will also be used for the Rugby Sevens at the Tokyo 2020 Olympic and Paralympic Games, and is sure to generate excitement as the main site of rugby competitions.

### Tokyo Stadium Match Schedule

#### Pool phase

20 September (Fri) Opening match: Japan v Russia  
21 September (Sat) France v Argentina  
29 September (Sun) Australia v Wales

5 October (Sat) England v Argentina  
6 October (Sun) New Zealand v Namibia

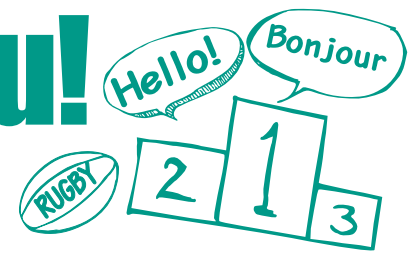
#### Knock out phase

19 October (Sat) Semi-final  
20 October (Sun) Semi-final  
1 November (Fri) Bronze final





# Teams from England and France come to Fuchu!



Fuchu city is Rugby World Cup 2019™ team camp of England and France. These two historic and powerful teams and their fans will stay in Fuchu.

This momentous event will be a once-in-a-lifetime opportunity for interaction with guests from overseas through rugby, so let's learn about these two teams and their countries!

## Proud to come from the birthplace of rugby

In the last RWC 2015, England turned in a poor showing, disappointing fans when it was eliminated as host country in the pool stages for the first time ever. The one who lifted the team out of the doldrums was Eddie Jones, the coach who had led Japan to its remarkable showing at RWC 2015. He breathed life back into the team with hard work and by effectively employing veterans along with young players. Until losing to Ireland in March 2017, the English team had an 18-match winning streak, showing the world that the team from the home of rugby is back.

### TEAM DATA

Rugby Football Union founded: 1871, Emblem: red rose, Current Head Coach: Eddie Jones  
**Rugby World Cup Record**  
 1987: Quarterfinals, 1991: Runner-up, 1995: 4th Place, 1999: Quarterfinals, 2003: Champions, 2007: Runner-up, 2011: Quarterfinals, 2015: Pool Stage

### Key players

#### Courtney Lawes

Since his debut in a 2009 test match, Lawes has established himself as a highly reliable forward. He uses his big 201cm, 111kg frame repeatedly to make speedy and powerful tackles for his team. In 2017, he was selected to play on the British and Irish Lions team.

#### Owen Farrell

Farrell is a crucial player in England's quest for a championship. He is a human control tower, a world-class stand-off (SO), inside center three-quarter back (CTB), and goal kicker who has mastered passing, running, and kicking skills. His father Andy, who used to play for England, is now the defense coach for the Irish national team.



England is the birthplace and home country of rugby, having played the first ever test match against Scotland in 1871. The pure white jersey with the rose emblem is a symbol of the great pride they take in their sport. As a powerful team with a long tradition, they have compiled a strong record in the Rugby World Cup over the years.

## FRANCE



In the French team's style of rugby, the ball is quickly passed from player to player so that when a player gets tackled, there is someone else to take his place. This is called "champagne rugby" because the continuously appearing players resemble the bubbles in champagne. This unique and unconventional style of play and the philosophy behind it are fascinating.

## A history of "Champagne Rugby"

France were runner-up at the inaugural RWC in 1987. The French team is said to always show their true ability and presence as a team that will not give up easily, having defeated New Zealand in 1999, when that nation was the top contender for the championship. The French team faced a down period after losing in the quarterfinals at RWC 2015, but hopes for the team's revival have been stoked by the leadership of new head coach in 2018, Jacques Brunel, and the high level of play from great overseas players who have joined the team.

### TEAM DATA

Rugby Football Union founded: 1919, Emblem: Gallic rooster, Current Head Coach: Jacques Brunel  
**Rugby World Cup Record**  
 1987: Runner-up, 1991: Quarterfinals, 1995: 3rd Place, 1999: Runner-up, 2003: 4th Place, 2007: 4th Place, 2011: Runner-up, 2015: Quarterfinals

### Key players

#### Mathieu Bastareaud

At 183cm tall and weighing 125kg, Bastareaud is a center with the body of a prop. The running speed with that kind of bulk makes him a great threat to the opposition. Since 2009, he has participated in the Six Nations Championship (a competition between the teams of six European countries) and became 2017-18 season captain of French Top 14 powerhouse RC Toulon.

#### Guilhem Guirado

Guirado is a rugby star who makes his French fans proud. He can do it all—scrum, tackle, run, and handle. He became captain of the French national team after RWC 2015, and also stars for the powerful RC Toulon. He will surely be leading his team as its general fighting on the front line at RWC 2019.





Know the countries to get more fun out of rugby

# England & France Refresher Course

Many of us know about England and France as popular tourist destinations and are aware of their cultures. In advance of welcoming the teams to Fuchu, let's first try to deepen our understanding about their countries. The matches will be more interesting if you know the countries, so let's take a refresher course on England and France.

## England

### The team represents England, not the UK

England is one of four countries, along with Scotland, Wales, and Northern Ireland, which comprise the United Kingdom. It has the largest area of the four countries and calls London, the capital of the UK, its own capital. England has turned out many great literary and artistic figures including William Shakespeare and the Beatles, and is the birthplace of sports such as soccer, rugby, and tennis. While the UK teams compete in the Olympic Games, the English team appears at the soccer and Rugby World Cups and other international competitions. This fact is due to a traditional regard for England as the birthplace of these sports.



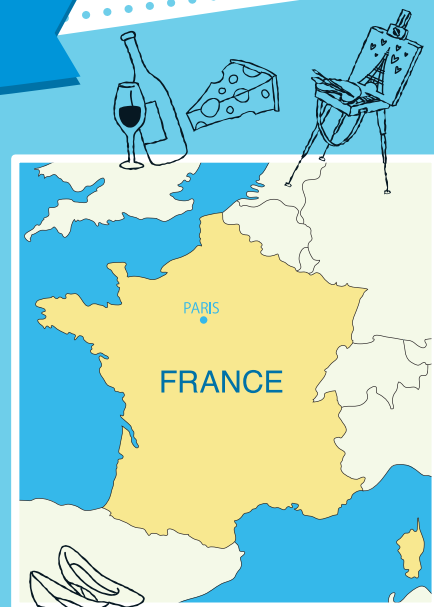
Capital: London / Language: English  
Area: About 130,400km<sup>2</sup> /  
Population: About 54.30 million (as of 2018)



## FRANCE

### Known as a major tourist destination with rich culture and fine arts

At 1.5 times the size of Japan, France boasts the largest national land area in the European Union. Its familiar tricolor flag conveys the motto "Liberty, Equality, and Fraternity." Metropolitan France is also called "l'Hexagon," but not only due to the shape of its land. It is said that this name also refers to the country's beautiful balance between various aspects. It has a rich history of fine arts, as symbolized by its abundance of world heritage and the Louvre Museum, as well as a gourmet culture that includes superior wine and the intangible cultural heritage that is French cuisine. France is also known as a major popular tourist destination that welcomes the highest number of tourists each year.



Capital: Paris / Language: French  
Area: 632,834km<sup>2</sup> /  
Population: About 66.99 million (as of 2018)



## Enjoy authentic cuisine from both countries in Fuchu!

Here are some places to enjoy the real taste of English and French food right here in Fuchu. Let's cheer England and France while enjoying beer, wine, and delicious food!

### Shuku Bar Machi

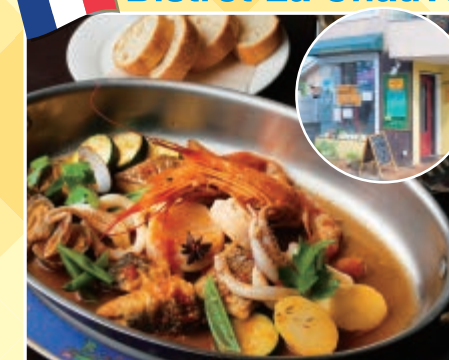


This sports bar lets you enjoy a relaxed meal while watching sports on television. Ordering an English beer from the ample drink menu along with meticulously prepared fish and chips will certainly get you into the World Cup mood.

Tel: 042-340-0666, Urano Bldg. 2F, 1-5-7 Fuchu-cho, Fuchu-shi  
Hours: Lunch Mon-Sat 11:00am-4:00pm / Dinner Mon-Thu 4:00pm-4:00am, Fri-Sat 4:00pm-5:00am, Sun-Holidays 4:00pm-1:00am, open year-round

MAP C-2

### Bistrot La Chauve



This bistro is tucked away on a quiet residential street. Here you can enjoy many dishes made from seasonal ingredients while soaking in the homelike and relaxed atmosphere. Check the blackboard for the daily recommended menu, from the *hors d'oeuvres* to the meat and seafood main dishes.

Tel: 042-367-1071, Plaisir Bldg. 1F, 1-27-4 Bubai-cho, Fuchu-shi  
Hours: Lunch weekdays 11:00am-1:30pm (last order) / Sat-Sun-Holidays 11:30am-2:00pm (last order) / Dinner 6:00pm-9:00pm (last order), closed: Wednesdays

MAP E

## Fuchu Dining & Bar Rest House



The relaxed mood of Fuchu Dining & Bar Rest House makes anyone feel free to come inside. The main dining area with spaciouly positioned tables, in addition to booths and semi-private rooms, provides flexibility for different situations. The substantial food and drink menu includes over 200 different cocktails. The English menu includes fish and chips, the perfect companion to a beer, while the French menu features a plate of three cheeses recommended by the Chef. Rest House also serves English beer and French wine.

Tel: 042-306-6454, Yoneda Bldg. 1F, 2-17-2 Kata-machi, Fuchu-shi  
Hours: 4:00pm-midnight (last order 11:00pm for food, 11:30pm for drinks), open year-round, except for the New Year holidays

MAP E

## Exciting Matches on Tap at Tokyo Stadium in 2020!

### Spotlight on Seven-a-Side Rugby



### Its appeal lies in the fast pace. The Japanese team is world-class.

Sevens is a type of rugby played by teams with seven players instead of 15. The field is the same size even though the number of players is reduced, and the result is a game that is more dynamic with greater ball movement and a faster pace. The Rugby World Cup Sevens is held once every four years, and the sevens format also became an official Olympic sport with men's and women's competitions for the first time at the 2016 Summer Olympics in Rio de Janeiro. At the Rio games, the Japanese men's team scored a huge victory over gold medal favorite New Zealand and wound up taking 4th place. The team will certainly attract attention in 2020 as one of the top squads vying for the world's #1 spot.

### Rugby Sevens Rules

#### Same field as 15-player rugby

It's a 7-on-7 game. Since fewer players have to cover the large field, the ball travels longer distances and the keys to success are speed, agility and handling skill. Scrums are made up of three players from each team.

#### Each game lasts about 15 minutes

There are two seven-minute halves in each game, with the exception of the final of a competition, which has two 10-minute halves. Halftime is no longer than two minutes. Since the games are over in about 15 minutes, it's possible to hold 10 or more matches in a single day.

#### Sevens competitions are like festivals!

To keep the fans engaged, sevens competitions are run like festivals. Background music and other entertainment is provided, and fans often attend matches dressed up. At a sevens competition, one can enjoy a very different atmosphere from that of a 15-on-15 tournament.

Sevens





# Walking Guide Map for Fuchu



### Area around Fuchu Station on the Keio Line

There are many ways to enjoy Fuchu-food, leisure, and sports among them. You are sure to find many satisfying places on a walk through the city.

**Points of Interest:**

- Waraku Yoitake (P8)
- Yakitori Daikichi Fuchu Shop (P8)
- Family Mart
- LE SIGNE (P3)
- Mensoken Kurenai (P8)
- Ikinari! Steak Fuchu Eki-mae Shop (P7)
- Yakitori Daikichi Fuchu Shop (P8)
- Foris (P3)
- Okunitama Shrine (P3)
- Monamour Seifudo Honten (P9)
- Okunitama Shrine (P3)
- Isetan Fuchu (P3)
- Shuku Bar Machi (P7)
- Horomon Torokaku Highball Nakamura (P8)
- Fuchu 35-bangai Shopping Street (P4)
- Shuku Bar Machi (P7)
- KURURU (P3)
- CAFFÉ & BAR ipini (P9)
- Fuchu City Office
- Okunitama Shrine
- Okunitama Shrine

**Streets:** Koshu-kaido Ave., Keio Line, Koyakiji Namiki-dori St., Kyu-koshu-kaido Ave.

### Area around Bubaigawara Station on the Keio Line

**Points of Interest:**

- Honshuku Elementary School
- Toshiba Fuchu Complex Ground
- Nikko-cho Police Box
- Viet Nam Yatai Tanzan (P9)
- Teuchi Soba Ishikawa (P7)
- Horomon Daigaku (P7)
- Kisaburo (P6)
- Yakitori Daikichi Bubaigawara Shop (P8)
- Fuchu Dining & Bar Rest House
- Restaurant Hustle (P6)
- Bistrot La Chauve (P17)
- Yagumo Shrine
- Asama Shrine
- Restaurants: P7, P6, P8, P6, P6

**Streets:** Koshu-kaido Ave., Musashino Line, Keio Line, Nambu Line

### Fuchu City Overview

**Districts:** Kita-fuchu, Nishifu, Bubaigawara, Fuchu, Higashi-fuchu, Tama, Shiraitodai, Musashinodai, Fuchuhonmachi, Fuchukeiba-seimonmae, Tama-reien, Koremasa, Kyoteijo-mae, Tamagawa, Nakagawara.

### Area around Tama-reien Station on the Keio Line

**Points of Interest:**

- Yakitori Daikichi Fuchu Koyanagi Shop (P8)
- Tama Road Shopping Street (P4)

**Streets:** Koshu-kaido Ave., Keio Line

### Area around Shin-machi

**Points of Interest:**

- Patisserie Ourson (P9)
- Shim-machi Bunka Center

**Streets:** Tohachi Road, Keio Line

### Area around Koremasa Station on the Seibu Tamagawa Line

**Points of Interest:**

- Tokyo Racecourse (P3)
- Suntory Tokyo-Musashino Brewery (P4)
- Daitokyo Sogo Oroshiri Center (P5)
- Kyodo no Mori Museum (P4)
- Tama River (Fuchu Tamagawa Kaze no Michi) (P5)
- Suzuya (P7)
- Yazaki Elementary School
- Suntory Fuchu Sport Center
- Kyodo no Mori Park

**Streets:** Chuo Expressway, Nambu Line, Fuchu-kaido Ave., Seibu Tamagawa Line

### Area around Higashi-fuchu Station on the Keio Line

**Points of Interest:**

- Fuchu no Mori Park (P5)
- Fuchu no Mori Arts Theatre East
- Higashifuchu Hospital
- Manzo-an (P7)
- Yakitori Daikichi Higashi Fuchu Shop (P8)
- Wakamatsu Elementary School
- Fuchu Technical High School
- Wakamatsu-cho 2-chome

**Streets:** Koshu-kaido Ave., Keio Line, Keio Keibajo Line

### Area around Nishifu Station on the JR Nambu Line

**Points of Interest:**

- Fuchu Nishi High School
- Nissin-cho 2-chome
- Nissin-cho Chuo
- Nisshin-cho 5-chome East
- Nisshin-cho 3-chome Dai 2
- Nissin Inari Shrine
- Fuchu Gaisen Nishifu Park

**Streets:** Nambu Line, Chuo Expressway

### Area around Tama Station on the Seibu Tamagawa Line

**Points of Interest:**

- Tama Eki Shopping Street (P4)
- Tokyo University of Foreign Studies
- MusashinonoMoriPark
- Asahi Football Park North
- Fuchu Asahi Football Park

**Streets:** Seibu Tamagawa Line, Asahi-cho-dori St., Stadium-dori St.