

Chichijima Tour Map

Information of indicated locations on the back

From B-Ship 0.7km

Miyanohama Beach

4min or 20min

(4 min. by car or 20 min. on foot from B-Ship)



From B-Ship 3.5km

Sakaiura Beach

6min + 3min

Bus stop nearby



From B-Ship 5.4km

Ogiura Beach

9min

Bus stop nearby



From B-Ship 6.1km

Tengubana Observation Point

To Ogiura Beach 9min + 30min



From B-Ship 5.6km

Ogasawara (Sadayori) Shrine

To Ogiura Beach 9min + 3min

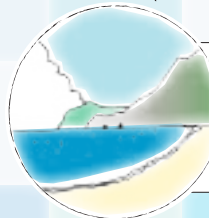
Mt. Yagusan

From B-Ship 7.0km

Kopepe Beach

14min or 25min

(14 min or 25 min on foot from Ogiura Beach)



From B-Ship 8.1km

Kominato Beach

To parking 20min + 8min

Bus stop nearby

Buta (Pig) Beach ~ John Beach
100m walk from Kominato Kaigan B.S.
ups & downs

0 200 500 1000m

From B-Ship By Car

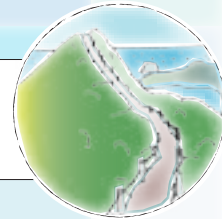
On Foot

From B-Ship 3.8km

To Nagasaki Observation Point entrance

8 min or 1 h

(approx. 8 min. by car or 1 hour on foot from starting point, B-Ship)



From B-Ship 4.7km

To Mt. Asahiyama entrance

11 min or 1 h 15 min

From B-Ship 5.0km

To Asahidaira Observation Point

14min or 1 h 30min

From B-Ship 6.1km

To Hatsuneura Observation Point

17min or 2h

From B-Ship 7.5km

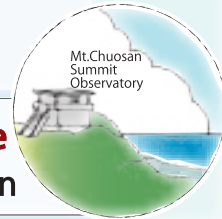
To Hatsuneura Beach entrance

19min or 2h 30min

From B-Ship 8.1km

To Mt. Chuosan entrance

20 min or 2h 50min



From B-Ship via Wangan-dori road 6.2km

Subtropical Agricultural Research Center

14min + 2min

Bus stop nearby



Caution
There are no places to buy or resupply water around destinations far from town. Make sure to bring plenty of drinking water with you when entering forest trails or walking to beaches. Especially in the summer, take at least 2 liters of water when walking to destinations that require time to visit and return such as John Beach.

Bus Route Roadway Walkway

※ Required time is just a guide

Let's explore!



Mt. Asahi (267m)/ Mt. Asahi South Peak (272m)

The word "Asahi" means "sunrise" in Japanese, and the mountain was given this name due to the fact that the Japanese flag was placed here by the expedition team sent to the islands by the Edo government.

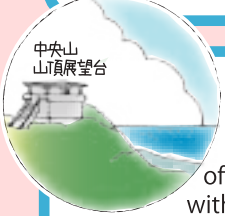
The summit offers a magnificent view of Futami Bay, while the trail also introduces a unique feature of the forests on the island, where the height of trees and plants gradually shrink as you ascend the trail.

Some observable rare plants include the Munin Taitogome in the South Peak, and the Shimataimintachibana near the summit.

11 min. by car or 1 hr. 15 min. on foot from B-Ship to the entrance of Mt. Asahi



Munin Taitogome
Shimataimintachibana



Mt. Chuosan (319m)

The observation deck at the top of the peak offers a spectacular 360 degree panoramic view, with the Mukojima and Hahajima island groups visible on a clear day.

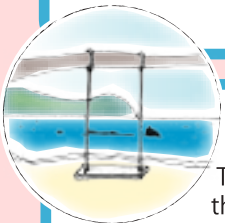
The course is relatively short, but has some rare flora along the hiking path to the scenic platform such as the Munin Futomomo.

The course to the scenic platform is closed between November and March for the protection of the red headed wood pigeon.

20 min. by car or 2 hr. 50 min. on foot from B-Ship to the entrance of Mt. Chuosan



Munin Futomomo



Sakaiura Beach

The sunken vessel that lies inside the inlet is the Hinkomaru, a cargo ship that was torpedoed during the war.

The remains of the ship have deteriorated over the years, and it has become home to many fish, making it a great snorkeling spot. Taking a walk along the beach is also recommended.

6 min. + 3 min. on foot from B-Ship to Sakaiura Beach



Ogiura Beach

This sand beach is also a great place for children as they can safely swim with bare feet. It's also possible to enjoy viewing fishes and corals on both sides of the bay, while sea kayaking is also popular. There's a shower available at the rest house.

9 min. by car from B-Ship



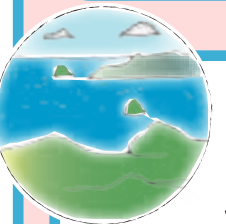
Ogasawara Sadayori Shrine

The Ogasawara Islands are said to have been first discovered by a man named Ogasawara Sadayori, and this shrine is dedicated to him.

On the way to the shrine is the "Ogasawara Development Monument" and "Nihohe Monument", which also makes it a recommended spot for those interested in history.

There is a path leading to the Ogiura hiking trail from here.

3 min. on foot from Ogiura Beach

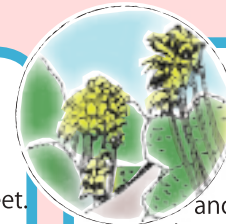


Tengubana Observation Point

This observation point is located along the Ogiura hiking trail, with a magnificent view of the Futami Bay.

There is also an impressive banyan tree near the entrance to Mt. Kuwanokiyama, with a trail that also leads to Yoake-doro road.

30 min. on foot from Ogiura Beach

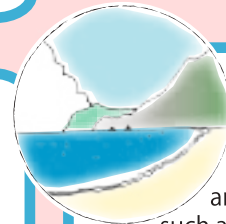


Subtropical Agricultural Research Center

This is an agricultural research facility of the Tokyo Metropolitan Government, with exhibits of Ogasawara's endemic plants and also a palm tree garden.

This is the place to visit if you're interested in viewing any specific types of flora that are endemic to the islands. There's also an observation deck. (Duration of a full tour: 1 hr.)

14 min. by car + 2 min. on foot from B-Ship



Kominato Beach

Along the beautiful path from the bus stop to the beach are many coastal trees

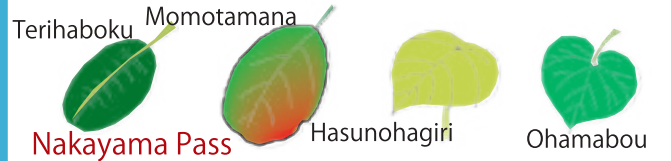
such as the Terihaboku (known locally as Tamana), Momotamana, Hasunohagiri, and Ohamabou.

The beach is wide and covered with sand, making it a popular spot for swimming.

On both sides of the bay are oddly patterned boulders called pillow lava rocks, which were formed by underwater volcanic eruptions in the past.

The Yatsuse River that flows into the sea from here is also a popular spot for viewing migrating birds.

20 min. by car to Kominato parking space from B-Ship, 8 min. on foot to Kominato beach



The entrance to Nakayama Pass is past a bridge just down the path next to Yatsuse River from Kominato bus stop. The trail is a bit steep, but it takes just about 20 minutes to reach the top. There is a spectacular view of Kominato Beach and Kopepe Beach, while Minamijima can also be seen towards the south.

20 min. on foot from Kominato bus stop



For further details...

Ogasawara Village Tourist Association
(within Commerce and Tourist Center B-Ship)
TEL: 04998 (2) 2587

Issued: March 2013



Make sure to bring plenty of water, wear a hat, carry sun screen, and wear proper shoes such as sneakers when walking.



Village Bus Adults: 200 yen Minors: 100 yen
*Please pay in advance when getting on the village bus. Please board the bus from the front door, and get off from the back door.



Required times are all estimates for one-way.