



Casual Stroll Map

Introducing spectacular scenic points, local facilities of Ogasawara, and courses for taking casual strolls in town.

Where to go?	Duration (from B-Ship)	Only flat paths	Uphill and stairs	Scenic points
Types of courses → Destinations ↓ (1) Weather Station & (2) Mikazukiyama Observation Deck	Round trip 1 hr. 40 min. + staying time	Weather Station	○	○
(3) Miyanohama Beach & (4) Tsurihama Observation Point	Round trip 2 hr. + staying time	Miyanohama Beach	○	○
Short excursions from town (5) Fisheries Center & (6) Marine Center	Round trip 1 hr. 30 min. + staying time	Fisheries Center Marine Center	○	○
(4) Strolling in Ogamiyama ★ Ogamiyama Shrine west entrance → Ogamiyama Shrine → Ogamiyama Main Observation Deck → Noyashi Bridge → Ogasawara Elementary/Middle School entrance → ★	Full tour 40 min. + break		○	○
(5) Strolling in Town ★ St. George's Church → Ogasawara World Heritage Center → Ogasawara Post Office → Bonin Street → Main Street → ★	Full tour 25 min. + shopping / break	B-Ship Village Office	○	○
(6) Strolling by the Beach ★ Ogasawara Visitor Center → Omura Beach → Rest area → Aotodai Lighthouse → Admiral Radford Elementary School Monument → ★	Full tour 25 min. + sightseeing / break	Visitor Center Omura Beach	○	○

Omura District Stroll Courses

Take a stroll in the compact town of Omura to visit sights and spots that introduce the island of Ogasawara!

♿ Toilet ♿ Accessible toilet 🚿 Shower P Parking
 ¥ ATM 🚌 Bus stop ⛽ Gas station 🛏 Rest space
 🚶 Paths with stairs/ramps 🪜 Stairs 🛤 Paved road 🚧 Tunnel
 ⬆ Uphill ⬇ Downhill ● Sights to seeh



Ogamiyama Shrine Ogamiyama Main Observation Deck Noyashi Bridge	Strolling in Ogamiyama [40 min. stroll from ★] The bright red main shrine of Ogamiyama Shrine can easily be spotted from town. The original shrine was burnt down during the Pacific War, and so the current building was rebuilt in 1978 after the reversion of the islands. The observation deck located along the Ogamiyama strolling path offers a view of the Futami Bay, while you can also find trenches that were dug during the war. There's also a wide variety of endemic plants.
St. George's Church Ogasawara World Heritage Center Main Street	Strolling in Town [25 min. stroll from ★] Just behind St. George's Church is the Ogasawara World Heritage Center, a facility with an exhibition space and a room where visitors can take a look at some of the islands' rare snails. You can get a special "Ogasawara Scenic Stamp" at the Ogasawara Post Office, and there are various local souvenir stores and restaurants / cafes along the Bonin and Main streets.
Ogasawara Visitor Center Omura Beach Admiral Radford Elementary School Monument	Strolling by the Beach [25 min. stroll from ★] The Visitor Center (commentating staff available/ 1hr. for a full tour) is an exhibition facility that introduces the nature, history, and culture of Ogasawara. From there you can stroll along Omura Beach to the Aotodai Lighthouse, then walk back towards the community event space where some monuments are located.

Visit or contact the Ogasawara Village Tourism Association located within "B-Ship" for sightseeing information.



The village flower of Ogasawara, also referred to as "Rosudo" (comes from "rose wood" in English), can be seen around the island.

Starting point "B-Ship"



The beach hibiscus grows near the shores, while the hibiscus glaber is usually found in higher elevated areas. These two plants look alike, and it is said that the endemic hibiscus glaber evolved many years ago from the beach hibiscus.



The pandanus is the symbolic tree of Ogasawara. In Japanese it is called "Octopus tree", as its roots that extend from the trunk it is called legs of an octopus.



Short Excursions from Town

You could also take longer walks to locations out from the town of Omura. There are observation points with spectacular views, beautiful sceneries, and unique facilities that show how the people of Ogasawara live in close proximity with the island's natural environment.

- Toilet
- Accessible toilet
- ATM
- Parking
- Shower
- Bus stop
- Gas station
- Rest area
- Paths with stairs/ramps
- Stairs
- Paved road
- Tunnel
- Uphill
- Downhill

(3) Miyanohama Beach &

(4) Tsurihama Observation Point
 Miyanohama beach [30 min. on foot from ★] A small beach that is abundant with corals. Searching for seashells small creatures that live by the sea are also ways to enjoy this beach during low tides between spring and summer.
 Tsurihama Observation Point [60 min. on foot from ★] The hiking trail from this point offers a view of Anijima and the strait that runs in between Chichijima.

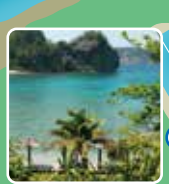
(1) Weather Station & (2) Mikazukiya Observation Deck

Weather Station [35 min. on foot from ★] This observation deck faces the sea on the west side of the island, and it is a popular spot for viewing the sunset as well as whales (from Jan. to Apr.).
 Mikazukiya Observation Deck [50 min. on foot from ★] This spot offers a view of the town of Omura and Futami Bay.

Mt. Mikazukiya 204m▲
(2) Mikazukiya Observation Deck
 (1)-(2) Approx. 15min.

(1)-(2) Weather Station Observation Deck
 B-Ship-(1) Approx. 35min.

○ ○ ○ ○ ○ (1)-(2) Round trip of 5km
 There's many uphill sections, making it a course recommended for those who are used to walking or hiking.
 ○ ○ ○ ○ ○ (3)-(4) Round trip of 4.8km
 There's some uphill sections between (3) to (4).
 ○ ○ ○ ○ ○ (5)-(6) Round trip of 4.2km
 This course along the beach section is flat with no slopes.



(5) Fisheries Center & (6) Marine Center
 Ogasawara Fisheries Center [15 min. on foot from ★ / Open hours 8:30-16:30] This is a fisheries research facility of the Tokyo Metropolitan Government.
 Ogasawara Marine Center [45 min. on foot from ★ / Open hours 9:00-16:00 / Closed for lunch 12:00-13:30] A facility conducting research and conservation efforts for green sea turtles and humpback whales.

(6) Ogasawara Marine Center
 Visitors can take a look at sea turtles as well as baby turtles swimming in the water tanks. There are also exhibits of whales/ sea turtles providing various information regarding these important animals.

○ There are no stores or vending machines in areas outside from town. Make sure to bring enough drinks and snacks with you for long walks.
 ○ The UV rays in Ogasawara can be quite strong even when it's cloudy, so make sure to have sunscreen, hats etc. to protect yourself from sunburns.

