



©Provided by JR East

Opening of new complex facility WATERS takeshiba in Takeshiba

Best
Recommendation

From April 13, 2020, the tenants of a new complex facility "WATERS takeshiba," will open their doors sequentially, including shops and stores that focus on culture and art and stimulate and

satisfy your curiosity through bodily feeling and experiencing, cafes and restaurants where you can enjoy eating on a terrace facing water, and three Shiki Theater Company's theaters. Within the facility, "mesm Tokyo, Autograph Collection," a high-end hotel, will open on April 27.

📍 Takeshiba Sta. (Yurikamome), Hamamatsucho Sta. (JR, Tokyo Monorail), Asakusa Sta. (Subway), Daimon Sta. (Subway)

waters-takeshiba.jp/



©Provided by JR East

Opening of an indoor miniature theme park in Ariake



©Small Worlds



©Small Worlds



©Small Worlds



©Small Worlds

SMALL WORLDS TOKYO is scheduled to open on April 25, 2020. The huge facility with a total floor area of 8,000 square meters will consist of seven areas, including the Kansai International Airport Area, the Global Village Area, and the Pretty Guardian Sailor Moon Area. Each area is a miniature world driven by cutting-edge technology, with cars and trains on display running and airplanes taking off and touching down. Evangelion: Tokyo III Area and Evangelion: Care Area recreate the world of the anime with realistic motion.

📍 Ariake-Tennis-no-mori Sta. (Yurikamome), Kokusai-tenjijo Sta. (Rinkai Line)

www.smallworlds.jp/



©2019, Takenaka Corporation

Opening of a new commercial facility in front of Harajuku Sta.

In spring of 2020, a new commercial facility called WITH HARAJUKU will open, with various tenants on five floors from the 2nd basement floor to the 3rd floor, including shops and stores selling lifestyle-related goods, sporting goods, apparel, and cosmetic goods and items, and cafes and restaurants. From Park View Restaurant on the 8th floor, you can have a panoramic view of the forest of Meiji Jingu Shrine.

📍 Harajuku Sta. (JR)

withharajuku.jp/



©2019, Takenaka Corporation

Newly Opened Hotels Information

Open on Dec. 9, HOTEL JAL CITY TOKYO TOYOSU, 330 rooms

Open on Jan. 22, 2020, RESOL POSHTEL TOKYO ASAKUSA, 110 beds

Open on Jan. 24, 2020, Mitsui Garden Hotel Roppongi Tokyo Premier, 257 rooms

Tokyo Illumination Spots

Tokyo is home to wonderful winter illumination events.



-Feb.16,2020
(tentative)

2

Marunouchi Illumination 2019 @ Marunouchi Nakadori-street, the area around Tokyo Station, etc.

www.marunouchi.com/

About 220 trees along Marunouchi Nakadori-street, stretching about 1.2 km, are beautifully decorated with Marunouchi's original color, "champagne gold," and "Light Gates," which also appeared last year, are installed as well as in the Yurakucho area.
Tokyo Sta. (JR, Subway), Nijubashimae (Marunouchi Sta. (Subway))



-Feb.14,2020
(tentative)

1

Caretta Illumination 2019 -Arabian Nights- @ Caretta Shiodome

www.caretta.jp/illumination/

For this year marking the 14th anniversary, a fantastic space is created based on the image of the world in the Disney movie "Aladdin." Don't miss this illumination show featuring the songs from the movie and glittering light.

Shimbashi Sta. (JR, Subway), Shiodome Sta. (Subway, Yurikamome)



-Feb.26,2020

3

TOKYO DOME CITY WINTER LIGHTS GARDEN @ Tokyo Dome City area

www.tokyo-dome.co.jp/illumination/

Under the theme of "wa," which means traditional Japanese styles, this event depicts beautiful scenes of Japan, such as fully-blossoming cherry trees, the Tanabata Star Festival, and Mt. Fuji, with light and sound. There is also a hands-on illumination, in which you can trigger boisterous sound and light by hitting a drum inside a yagura tower.

Suidobashi Sta. (JR, Subway), Korakuen Sta. (Subway)

-Mar.29,2020

4



©TOKYO MEGA ILLUMI

TOKYO MEGA ILLUMINATION 2019-2020 @ Oi Racecourse

tokyomegaillumi.jp/

One of the biggest illumination events in Tokyo. You can enjoy gorgeous sights of light, including large fountains with rainbow-colored lights, glittering trees along with an aurora in the sky, and a 100-meter light tunnel with shining cherry blossoms. There is also an event to touch horses.

Ticket Ticket at door: 1,000 yen Oi Keibajo-mae Sta. (Tokyo Monorail)



-May.6,2020

5

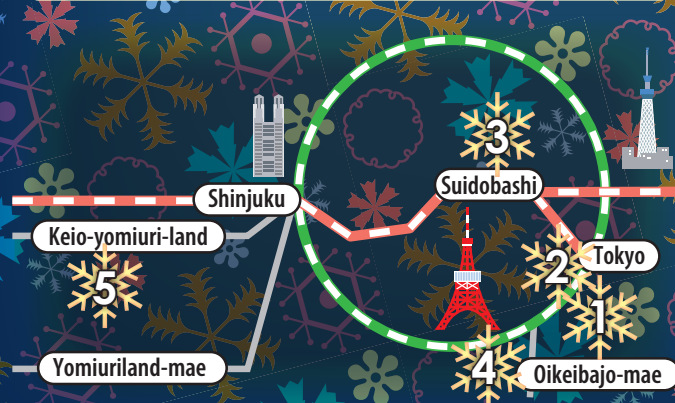
Yomiuri Land Jewellumination® -Jewelry Olympus- @ Yomiuri Land

www.yomiuriland.com/jewellumination/

Marking the 10th year anniversary, this annual event features 12 new dreamy areas under the theme of "Jewelry Olympus," along with one of the biggest fountain shows in Japan and a performance with lasers and flame. Amid the beautiful illumination, you can enjoy various winter activities, such as skating and sleighing.

Ticket Night Pass: 2,500 yen/ Night Entrance Fee: 1,500 yen

Take "Sky Shuttle" gondola or Odakyu bus from Keio Yomiuriland Sta. (Keio)/ Take Odakyu bus from Yomiuriland-mae Sta. (Odakyu)



Tokyo Walking



Model Walking Route

1 Ryogoku Sta. (JR)

5 min. on foot

2 Tomoegata

25 min. on foot

3 Mikokuyu



Gourmet Guide



★ CHANKO TOMOEGATA

A restaurant serving traditional *chanko-nabe* dishes and authentic Japanese dishes prepared by Japanese chefs. There are some private tea-house style rooms. The menu includes *chanko-nabe* for 1 serving (3,300 yen). www.tomoegata.com/



★ Beer Club Popeye

Offering 70 kinds of beer, this popular restaurant has a reputation as a "sacred place" of craft beer. Enjoy beer sampling sets (748 yen for 3 kinds/ 1,958 yen for 10 kinds) and great dishes, such as "Spare ribs simmered in Stout" (1,518 yen). 70beersontap.com



★ Ryogoku Terrace

Located next to Kyu-Yasuda Gardens, this restaurant is situated in a lushly green area. You can enjoy various kinds of dishes, such as pizza (935 yen and up) and pasta (968 yen and up). In winter, there will be a *nabe* (hot-pot) menu, where you can enjoy eating *nabe* at a *katatsu* (a low table with a heat source, which is covered by a blanket) (reservation required). www.ryogokuterrace.jp/

Ryogoku

Only 3 minutes from Akihabara by JR Chuo Line train, Ryogoku is famous as a town of sumo, and has unique shops and restaurants with Japanese style. It is a downtown area packed with Tokyo's culture and history.



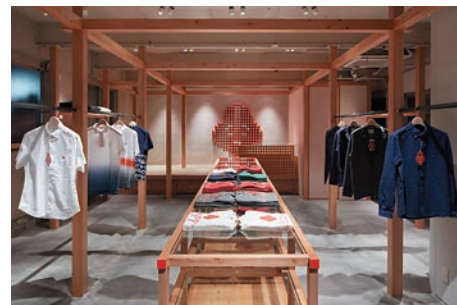
★ MERIKOTI

A toe-sock store featuring *nuno-zori* (Japanese cloth slippers), toe socks, and *tabi* Japanese socks. Cute handmade *nuno-zori* slippers are made with traditional Japanese braiding technique and popular as room shoes. A workshop is offered where you can try making your own *nuno-zori* slippers. www.meri-koti.tokyo/



★ Ryogoku Takahashi

This store is filled with sumo-related goods and items, including stationery, hand towels, dolls, foldable fans, mug cups, and *bento* boxes. www.instagram.com/ryogoku_takahashi/



★ IKIJI STORE

IKIJI is a clothing designer and manufacturer, offering various products, including Polo shirts, shirts, wallets, and card cases. iki.jp/en/



★ Mikokuyu

This public bathhouse has various bath tubs filled with 100% natural spring water, which is characterized by its blackish color. Enjoy onsen in an open-air bath while looking at TOKO SKYTREE. 470 yen for adult (shampoo and body soap are available) mikokuyu.com

Tokyo Festival/Event Information Nov. 2019–Apr. 2020

Featured illumination events

◆ Nov. 2, 2019–Feb. 24, 2020

Ebisu Garden Place Winter Illumination 2019 @Ebisu Garden Place

gardenplace.jp/special/2019christmas/
With illumination of one of the biggest chandeliers in the world with a total of 250 light bulbs (until Jan. 13, 2020) and a 10-meter Christmas tree with colorful decorations, the whole facility is gorgeously shining with Champagne-gold color.

🚶 Ebisu Sta. (JR, Subway)



◆ Nov. 14, 2019–Feb. 24, 2020

HIBIYA Magic Time Illumination @Hibiya Area with TOKYO MIDTOWN HIBIYA

www.hibiya.tokyo-midtown.com
The main Christmas tree is about 12 meters high. You can enjoy a performance along with sound from inside the tree. This year, you can enjoy a new special one with bubbles drifting in the air. The Magic Time special performance, which takes place every 15 minutes, transforms the area into a magically glittering world.

🚶 Hibiya Sta. (Subway), Yurakucho Sta. (JR)



◆ Illumination Events around Shinjuku Station ◆

◆ Nov. 13, 2019–Feb. 16, 2020

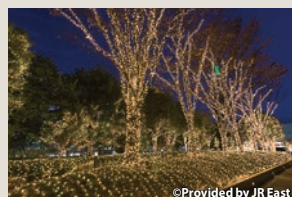
Shinjuku Minami Lumi

@Shinjuku South Exit Area

www.jreast.co.jp/press/2019/20190830_ho03.pdf

Enjoy different kinds of illumination at respective venues at Shinjuku South Exit.

🚶 Shinjuku Sta. (JR, Subway, Odakyu, Keio)



©Provided by JR East

◆ Nov. 13, 2019–Feb. 16, 2020

Shinjuku Terrace City Illumination 2019–2020

www.odakyu.jp/terrace-city/

Shinjuku Terrace City is decorated with five colors of illumination and flower decorations for five areas based on the theme "colors."

🚶 Shinjuku Sta. (JR, Subway, Odakyu, Keio)



Flower events starting from early spring



◆ Late Jan.–late Mar. 2020

Izu Oshima Tsubaki-matsuri Festival @Izu Oshima

At several venues on the island known as the "island of tsubaki" (camellias), you can enjoy various events, including not only viewing flowers but also a parade, local entertainment, dyeing with camellia petals, and a night festival. Tsubaki Garden at Oshima Park has a rare variety of camellia called "kinkacha," with yellow petals.

🚶 About 1 hr 45 min by Jetfoil from Takeshiba Terminal, about 8 hr by ferry (overnight), about 30 min by air from Chofu Airport



◆ Feb. 8–Mar. 8, 2020

Yushima Tenjin Ume-matsuri Festival @Yushima Tenmangu

www.yushimatenjin.or.jp/pc/ume/

At the venue with about 300 plum trees, mainly consisting of white-blossom trees, there will be various events, including votive entertainment performances, such as Shiraume-Taiko drum, classical Japanese dance, and shamisen, mikoshi parade, and an open-air tea ceremony.

🚶 Yushima Sta. (Subway), Ueno-hirokoji Sta. (Subway), Ueno-okachimachi Sta. (Subway), Okachimachi Sta. (JR), Hongo-sanchome Sta. (Subway)



◆ Mar. 20–Apr. 19, 2020

MIDTOWN BLOSSOM 2020 @Tokyo Midtown

Lots of fun events both outdoors and indoors are scheduled, including lighting-up cherry blossoms along the street for about 200 meters, Blossom Lounge for cherry blossom viewing while enjoying food and sparkling wine, and a gorgeous flower art event.

🚶 Roppongi Sta. (Subway), Nogizaka Sta. (Subway), Roppongi-itchome Sta. (Subway)

Event Calendar

Date/Title	Venue	Content
Dec. 3, 2019–Mar. 22, 2020 Special Exhibition: A Railway Story in the Sky	Mori Arts Center Gallery & Sky Gallery @Roppongi Hills 🚶 Roppongi Sta. (Subway), Azabu-juban Sta. (Subway)	A large-scale "hands-on" railway exhibition on the 52nd floor. This exhibition features a wide range of articles and topics related to railways, including a rare display of items that are usually not available at any other railway-related museums in Japan, and food, travel, anime, and games, which are somehow related to Japan's unique railway culture, offering a great time to people of various generations. www.tentetsuten.com/
Nov. 22, 2019–Mar. 8, 2020 Secret Source of Inspiration: Designers' Hidden Sketches and Mockups	21_21 DESIGN SIGHT Gallery 1 & 2 🚶 Roppongi Sta. (Subway), Nogizaka Sta. (Subway)	A number of sketches, drawings, and mockups by Japan's great designers, architects, and critics, including Naoto Fukasawa, Kenya Hara, Kengo Kuma, and Taku Sato, which are normally unavailable, are displayed at this exhibition. www.2121designsight.jp/program/inspiration/

For other festivals and events...

See official Tokyo travel guide
"GO TOKYO"

www.gotokyo.org/en/



Editor's note

SHIBUYA SCRAMBLE SQUARE, the skyscraper that looks 230 meters down on the famous Shibuya Scramble Crossing, has just opened. Its exterior walls wrapped in panels of glass make this high-rise a classy addition to the Tokyo skyline. Stepping into the elevator on the 14th floor and arriving at the SHIBUYA SKY rooftop observatory is a heady experience that makes you feel you've almost reached the sky. You will spot the New Stadium, Tokyo Tower and TOKYO SKYTREE in the distance. SHIBUYA SCRAMBLE SQUARE looks to becoming a popular Shibuya tourist landmark.

