



See more of Tokyo

東京 TAXI 観光

with a Sightseeing Taxi



TOKYO
METROPOLITAN
GOVERNMENT

Comfortable door door Tokyo Tourism

Tokyo Sightseeing Taxi is a kind of taxi that will pick you up and drop you off where you want while touring Tokyo's famous sights with guided explanation from the driver. All drivers have been certified with achieving a level of knowledge at or above our standard to become a Tokyo Sightseeing Taxi Driver, or TSTiE (Tokyo Sightseeing Taxi in English) for those that have passed an English sightseeing test given by Tokyo, that allows them to provide a higher quality of service. Get to your next destination with peace of mind and enjoy seeing all there is in Tokyo.



Check this out! **4** reasons to use Tokyo Sightseeing Taxis



Point 1 **Freedom to customize your course and make sudden changes**

- Change the times and locations to what you want to see
- It is possible to make adjustments on the day based on weather or request centered on the places you want to see



Point 2 **Private charter with small groups**

- Private space is provided in a way you can't get in a larger group tour
- There is a wide variety of vehicles you can choose from, from 4 to 9 people
- Perfect for shared use with friends and family



Point 3 **Visit famous tourist locations while moving in comfort**

- Store luggage in the car and move around the location with less baggage
- Efficient transportation in highly maneuverable taxis



Point 4 **Drivers that are also tour guides**

- Knowledgeable drivers give easily understood explanation
- Drivers can give advice about courses and places to dine based on your time

Notes about using the Tokyo Sightseeing Taxi

- ① Reservation is required. Please contact the taxi company of your choice.
- ② If the starting place or destination is within the 23 Wards or Tama Area, the customer can customize the time, locations and sights freely.
- ③ The fees will vary based on the time and taxi company. They will also depend on the starting place, locations visited, the traffic conditions that day, whether a TSTIE driver was requested and other factors. Please confirm with the taxi company.
- ④ Time spent shopping and eating will also count towards service charges.
- ⑤ Parking fees, admission tickets (including the driver's admission), expressway tolls, customer meals and other expenses shall be covered by the customer.
- ⑥ The driver will accompany you to give a guided tour. Please note some venues do not allow this.
- ⑦ Some facilities require the customer to make a reservation in advance. Please confirm your approximate reservation time with the taxi company.
- ⑧ Some drivers are able to communicate in English. Confirm on the taxi company introduction website (English) given on page 27.

.....Using this booklet.....

1. The ten courses given in this booklet are sample courses for Tokyo Sightseeing Taxis.
2. Some taxi companies may not operate according to these model courses.
3. The times and service charges for the model courses are approximations based on use of a 4-passenger sedan-type taxi with guidance in Japanese.
4. The "VOICE" notes on the model courses are responses received from participants in a sightseeing taxi monitored tour survey performed in 2016.
5. The courses assume the lodgings that serve as the start and end point are found within the urban center such as Chiyoda, Chuo, Minato, Shinjuku, Taito or Shibuya.
6. Information about facilities are current as of March 2018.

● Model Course Map



Spots for Course 1 ★★★★★

Spots for Course 2 ★★★★★

Spots for Course 3 ★★★★★

Spots for Course 4 ★★★★★

Spots for Course 5 ★★★★★

Spots for Course 6 ★★★★★

Spots for Course 7 ★★★★★

Spots for Course 8 ★★★★★

Spots for Course 9 ★★★★★

Spots for Course 10 ●●●●●●●●●●

Cultural Edo: Visit shrines and gardens wearing a kimono

★ This is a model course. Times and costs are estimated with guidance in Japanese.

★ Parking fees, admission to facilities, expressway fees, meals, English tour guidance from a TSTIE driver and other expenses will be borne by the user.

Your lodgings (in Tokyo)

Kimono Rentals

Hama-rikyu Gardens

Short Course 9:00

9:40

11:00

Long Course 9:00

9:40

11:00



Kimono Rentals

There are many kimono rental shops in Asakusa with a wealth of high quality kimono suitable to the weather. Choose your favorite color and pattern and try it on. Wear the kimono and visit famous locations in traditional Japanese style. When wearing a kimono it is convenient to get around by taxi and your driver can help you take commemorative pictures at the perfect spot.

Hama-rikyu Gardens

Established in 1704 as a secondary residence for Tokugawa Ieyasu, these gardens have undergone several phases of renovations completing their transformation around 230 years ago to close to their present form. One of the most famous Edo period gardens, there is a seawater pond and two duck ponds. The multiple teahouses that were present have been remade and one can enjoy matcha tea at Nakajima-no-ochaya.



☎ 03-3541-0200

🕒 9:00 to 17:00 (entrance until 16:30)

📅 December 29 to January 1

💰 General 300 yen, Seniors (65+) 150 yen

Guide to the Garden

Free Guide: Weekends and holidays from 11:00 and from 14:00 (Cancelled in August)

Free English Guide: Saturdays from 11:00 and Mondays from 10:30 (Cancelled in August)

WEB/JP www.tokyo-park.or.jp/park/format/index028.html

WEB/EN teien.tokyo-park.or.jp/en/hama-rikyu/

Change into a kimono and visit gardens and temples left from the Edo period. Includes a kabuki viewing, one of Japan's unique traditional performing arts. You can try the sado tea ceremony to savor rich tea and wagashi sweets as well as do some shopping while you enjoy the culture of Edo.

It was my first time to try on a kimono and I was able to wear it as I visited many sightseeing spots. It was really convenient to get around using a taxi when wearing a kimono. I experienced Japanese culture like kabuki theater and Nakamise. Having the explanation from the taxi driver helped me understand it all better.



Kabukiza

11:45

12:30

Sensoji Temple/ Nakamise

12:30

14:00

Kimono Rentals

13:00

15:00

Your lodgings (in Tokyo)

14:00

16:00



Kabukiza

Kabuki is a unique Japanese traditional performing art. Kabukiza was founded in 1889 and is the world's only theater that only shows kabuki. The addition of the Kabukiza Tower in 2013 made the facilities multipurpose. There are two underground floors beneath the tower with restaurants and souvenir shops. On the fifth floor you can try out kabuki for yourself at the Kabukiza Gallery.

☎ 03-3545-6800

🕒 From 10:30 (the last performance time changes each month)

🔄 Changes each month

💰 Changes depending on performance

🕒 Open 24 hours, 300 yen/30 minutes (8:00 to 22:00)

🌐 WEB/JIP www.kabuki-bito.jp/theaters/kabukiza/🌐 WEB/EN www.kabukiweb.net/theatres/kabukiza/information/

★Kabukiza Gallery

☎ 03-3545-6886

🕒 10:00 to 17:30 (final admission 17:00)

💰 Normal admission: 600 yen

💰 Special Admission: 800 yen Viewing course
(Includes 3-minute kabuki viewing)

* There is bilingual explanation by headset, separate fee.

Sensoji Temple/Nakamise

Sensoji is the oldest temple in Tokyo with nearly 1400 years of history as a cornerstone of shitamachi culture. At the center of the growth of Edo culture, its impact continues to mark the surrounding city including many traditional events in each season such as the Hagoita Market. The large Kaminarimon Gate with its enormous lantern is the start of the 250m Nakamise road with 90 shops, some of which have been there since the Edo period. This is a great place to experience Edo culture.

☎ 03-3842-0181 (9:30 to 16:00 except Sundays/Holidays)

* The temple is open 6:00 to 17:00 from April to September, 6:30 to 17:00 from October to March

* The Hozuki Market held on the grounds of the temple every year on July 9 and 10 is an ancient tradition celebrated today. It is said a pilgrim praying here on July 10 is held as having done so for 46,000 days.

🕒 [Nakamise] Open year round

🌐 WEB www.sensoji-jp.jp

Relaxing Japan: Enjoy local sake, onsen, and soba

★ This is a model course. Times and costs are estimated with guidance in Japanese.

★ Parking fees, admission to facilities, expressway fees, meals, English tour guidance from a TSTiE driver and other expenses will be borne by the user.

Your lodgings (in Tokyo)

Short Course 9:00



Long Course 9:00

Edo Tokyo Open Air Architectural Museum

10:15



10:15

Akigawa Valley

11:15



12:00



Edo Tokyo Open Air Architectural Museum

From the Edo period to the middle of the Showa period, historically valuable cultural buildings were moved, restored, preserved and put on display at this outdoor museum. Looking inside, we discover about the lives of people living in those times. In addition to historical buildings with status, ancient residences of farmers and homes, there is also a zone recreating the shitamachi streetscape. Let the scenery take you on a trip back in time.

☎ 042-388-3300

🕒 9:30 to 17:30 (April to September),
9:30 to 16:30 (October to March)

* Entrance permitted until 30 minutes before closing

📅 Year-end/New Years, Mondays
(or the following day if a holiday or substitute holiday)

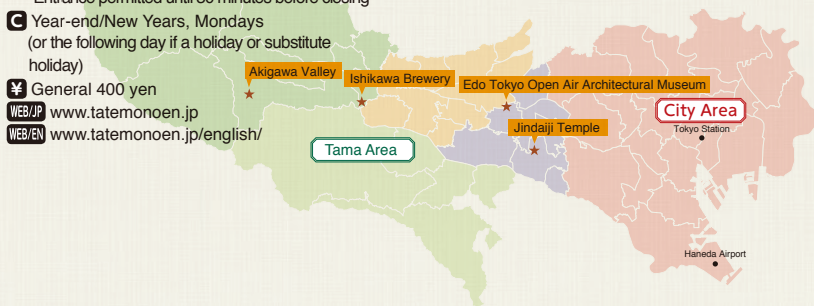
¥ General 400 yen

WEB/JP www.tatemonoen.jp

WEB/EN www.tatemonoen.jp/english/

Akigawa Valley

Akigawa Valley is an area touched by the atmosphere of undeveloped mountain woodlands. Part of the nearest national park to the Metropolitan Area, Chichibu-Tama-Kai National Park, the Akigawa Valley offers rugged views of rocky cliffs and valleys complemented by the gentle flow of the Akigawa river. There are natural hot springs with high alkalinity famed for skin beauty and the bountiful nature of Tama revealed in the changing of the four seasons. Let your cares be washed away as you listen to the burbling sounds of the river.



Leaving the bustle of the central metropolis west by expressway to the Tama district on a sunny day, the lucky traveler should have a good view of Mt. Fuji from their window. The nearby natural environment of Tama is home to onsen hot springs and sake rice wine with many surviving historical buildings of Edo-Tokyo. The many fresh springs have also given rise famous soba buckwheat noodles.

I enjoyed the view of old buildings. I recommend this course to sake lovers. Brewery tour was very good. Leaving my luggage in the car made my trip a lot easier even with a lot of shopping.



Ishikawa Brewery

12:45



14:30

Jindaiji Temple

14:00



16:00

Your lodgings
(in Tokyo)

15:00



17:00



Ishikawa Brewery

Founded in 1863, Ishikawa Brewery's history stretches back more than 150 years. As one of the sake brewers inheriting the traditional production of Japanese rice wine, six of the buildings are nationally registered tangible cultural properties. In addition to the archives where you can see the history of sake and beer brewing, there is also a store and restaurant. With a reservation, you can tour inside the brewery.

☎ 042-553-0100

📄 Depends on facility

★ Archives ¥ Free

★ Tour: Reservation required at least one day in advance (available on weekends and holidays). After the tour you can sample the product at the store.
(Guidance in English available on weekdays 10:00 to 16:00; apply by phone in advance)

* Application: 042-553-0100

* Start time: ① 10:30 ② 14:00 ③ 16:00

* Tour: Free * Time: about 1 hour

WEB/JP www.tamajiman.co.jp

WEB/EN tamajiman.co.jp/en/

Jindaiji Temple

Said to have been built in 733, the second oldest temple in Tokyo after Senso-ji. Situated among the dense forests of Musashino with its ancient freshwater springs, it is widely associated with the Jindaiji Soba buckwheat noodles. There are some twenty soba, tea and souvenir shops lining the streets leading up to the temple gate. The Jindaiji surroundings encompass nearly a dozen acres of bountiful natural resources and freshwater springs including the neighboring Jindai Botanical Gardens. Jindaiji Temple is dedicated to the god of inter-connectedness and is said to bless the deepening of romantic relationships.

☎ 042-486-5511

🕒 9:00 to 17:00

🚗 Since the parking lot for Jindai-ji is only open to those engaging in ceremonies or prayers for vehicle safety, a nearby paid parking lot will be used.

WEB/JP jindaiji.or.jp/

WEB/EN jindaiji.or.jp/language/english.pdf

Downtown Shitamachi: Experience daily life and tea ceremony

★ This is a model course. Times and costs are estimated with guidance in Japanese.

★ Parking fees, admission to facilities, expressway fees, meals, English tour guidance from a TSTiE driver and other expenses will be borne by the user.

Your lodgings (in Tokyo)

Short Course 9:00



Long Course 9:00



Tokyo Sakura Tram (Toden Arakawa Line)

This is one of only two tramways remaining in Tokyo's urban center. The single car makes about 30 stops in the course of one hour with most stations unattended. From the windows you can get a glance of retro atmosphere and the old-fashioned lifestyles of shitamachi. To take an urban hike along the Toden line, we recommend getting an all day Toden pass, available for adults at a mere 400 yen with full access to the train all day. Note that you board from the front and get off at the back. Since most stations are unattended, the driver will manage people getting on and off. Tickets can be purchased on board. Note that only 1,000 yen bills are accepted.

☎ 03-3816-5700
(Toei Transportation Customer Center)

WEB/JP www.kotsu.metro.tokyo.jp/toden/

WEB/EN www.kotsu.metro.tokyo.jp/eng/

4~6

hours course

¥20,000

}

¥30,000

Tokyo Sakura Tram
(Toden Arakawa Line)

9:45



9:45

Nezu-jinja
Shrine

10:15



10:45



Nezu-jinja Shrine

An ancient shrine founded 1900 years ago by Yamato Takeru (also known as Prince Osu) according to Japanese legends, Nezu-jinja Shrine is one of the Tokyo Ten Shrines. The premises include a Prayer Pine-tree famous for couples, an Otome-Inari Shrine, a Japanese thousand-torii gate pathway and romon tower gate. Located directly north of Edo palace, it is a place of extreme fortune having miraculously escaped damage in natural disasters and fire bombing and retains a distinctive Edo style. All Edo-period structures that remain today are considered to represent miracles and this shrine is designated as an important national cultural property.

☎ 03-3822-0753

🕒 6:00 to 17:00

WEB www.nedujinja.or.jp

Ride one of the last streetcars in the center of Tokyo. Along the track see how the cityscape reflects the daily lives of people living downtown. Visit a shrine, walk through retro shopping districts or try tea ceremony as you get “hands-on” with the lives and culture of shitamachi.

I really liked the intimacy joining the community, unlike popular sightseeing areas. Tea ceremony was such a good Japanese cultural experience. Using taxi was more relaxing than train or bus.



Your lodgings
(in Tokyo)

13:00

Yanaka Ginza

10:45



11:45

YANESSEN

11:30



12:30

15:00



Yanaka Ginza

Yanakaginza is a place retaining the lifestyle and feel of an older time centered on a market street full of shitamachi charm. The market street is packed full with about seventy stores representing a wide range of products and services including one-man shops, handmade sweets, cafes, and stylish general stores along the narrow, 170m road. The stairs leading to the entrance of the market street is a famous place for watching the sunset known to locals as Sunset Steps (yuyake dandan). Standing at the top and looking out over the market is sure to impress upon the viewer the culture of an older golden era.

WEB www.yanakaginza.com/
(Yanakaginza Shopping Street Revitalization Association)

YANESSEN

Yanessen is a tourism facility and cultural experience center targeted at foreign visitors. Try out tea ceremony, calligraphy and kimono-wearing by reservation on the day, or experience Japanese wadaiko drums, ikebana flower arrangement or Japanese cuisine with a reservation in advance. Connect with traditional Japanese culture from the heart with full English interpretation.

☎ 03-3828-7878 (inquiries accepted in English)

🕒 9:30 to 17:00 * Reception: 8:00 to 20:00

🕒 Open year round

★ Tea Ceremony

* Time: 60 minutes

* Fee: 5,800 yen for 1, 4,850 yen per person for 2 or more
(includes sweets and English interpretation)

* Reservation required

WEB/JP www.ti-yanesen.jp

WEB/EN www.ti-yanesen.jp/en/

Historical Edo-Tokyo: Explore the culture and food of the past

★ This is a model course. Times and costs are estimated with guidance in Japanese.

★ Parking fees, admission to facilities, expressway fees, meals, English tour guidance from a TSTiE driver and other expenses will be borne by the user.

Your lodgings (in Tokyo)

Short Course 9:00

Long Course 9:00



East Gardens of the Imperial Palace

The East Gardens are located on the east side of the Imperial Palace and were once home to Edo Castle. This urban green oasis covers about 52 acres with mixed woods, Japanese gardens, Imperial Household related facilities, the remains of Edo Castle and other historical sites.

Due to the size of the gardens, we recommend limiting your visit to the remains Edo Castle and its donjon.

- 📍 03-3213-1111 (Imperial Household Agency)
- 🕒 9:00 to 16:30 (until 17:00 from April 15 to the end of August, until 16:00 from November 1 to the end of February)

* Last entry 30 minutes before closing

* Exits/entrances: Ote-mon Gate, Hirakawa-mon Gate and Kitahanebashi-mon Gate. (Receive an admission slip when entering to return when leaving)

- 📅 Mondays and Fridays (Open when a holiday; when open Monday due to holiday closed on Tuesday) and December 28 to January 3

💰 Free

🌐 www.kunaicho.go.jp/event/higashigyoen/higashigyoen.html

🌐 www.kunaicho.go.jp/e-event/higashigyoen02.html

4~6

hours course

¥20,000

¥30,000

East Gardens of the Imperial Palace

9:30

9:30

Edo-Tokyo Museum

10:00

10:30



Edo-Tokyo Museum

This museum shows the history and culture of Edo-Tokyo. It was reopened in April 2018 with renovated restaurants and shops. The permanent exhibit comprises three zones: Edo, Tokyo and the secondary exhibition room. Enjoy the full sized recreation of Nihonbashi Bridge and a shibaigoya playhouse while observing period streetscapes and lifestyles.

- ☎ 03-3626-9974
- 🕒 9:30 to 17:30 (Saturdays 9:30 to 19:30)
- 📅 Mondays (or following day if holiday), Year-end/New Years

💰 600 yen

🌐 www.edo-tokyo-museum.or.jp

🌐 www.edo-tokyo-museum.or.jp/en/

Tour the ruins of Edo Castle and discover the history and culture of Edo-Tokyo as you visit local museums. Taste the foods of ancient Edo among the gathered washoku-specializing Japanese restaurants. Come explore traditional Japanese culture.

Eating Japanese cuisine in the buildings designed after old Tokyo and Edo was so fun. Our driver told us about traditional Japanese culture and I was happy I got to experience it for myself.



Your lodgings
(in Tokyo)

Ryogoku Edo Noren

10:45



12:00

YANESSEN

11:30



13:00

13:00

15:00



Ryogoku Edo Noren

The gathered washoku restaurants offer sushi, monja, tempura and chanko dining such as that eaten by sumo rikishi wrestlers for your enjoyment in a high roofed Edo style street. These shops serve food from restaurants with a long history passed down from the Edo-period and fresh ingredients direct from Tsukiji market.

- ☑ 03-6658-8033 (Ryogoku Edo Noren Sales Office)
- ☑ 10:00 to 23:30 (Hours of operation differ by restaurant)

📅 January 1, 2 inspection dates (irregular)

★ Ryogoku Tourism Center

The Ryogoku Tourism Center inside Ryogoku Edo Noren can give information about Ryogoku with the traditional culture of the Edo period.

* 03-5637-7551

* Tourism Center Hours: 10:00 to 18:00

WEB/JP www.jrtk.jp/edonoren/

WEB/EN www.jrtk.jp.e.wz.hp.transer.com/edonoren/

YANESSEN

Yanessen is a tourism facility and cultural experience center targeted at foreign visitors. Try out tea ceremony, calligraphy and kimono-wearing by reservation on the day, or experience Japanese wadaiko drums, Ikebana flower arrangement or Japanese cuisine with a reservation in advance. Connect with traditional Japanese culture from the heart with full English interpretation.

- ☑ 03-3828-7878 (inquiries accepted in English)

☑ 9:30 to 17:00 * Reception: 8:00 to 20:00

📅 Open year round

★ Tea Ceremony

* Time: 60 minutes

* Fee: 5,800 yen for 1, 4,850 yen per person for 2 or more (includes sweets and English interpretation)

* Reservation required

WEB/JP www.ti-yanessen.jp

WEB/EN www.ti-yanessen.jp/en/

Avant-garde and Ancient: Tour the old and new in Tokyo

★ This is a model course. Times and costs are estimated with guidance in Japanese.

★ Parking fees, admission to facilities, expressway fees, meals, English tour guidance from a TSTiE driver and other expenses will be borne by the user.

Your lodgings (in Tokyo)

Short Course 9:00

Long Course 9:00



© TOKYO-SKYTREE © TOKYO-SKYTREETOWN

TOKYO SKY TREE TOWN®

Opened in 2012, Tokyo Sky Tree is a new symbol of Tokyo, the highest tower in the world at 634 m tall. At its base Tokyo Solamachi is a commercial center with more than 300 stores including fashion and gourmet. The 350 m viewing deck and 450 m panorama hall offer excellent views of Tokyo.

☎ 0570-55-0634

🕒 8:00 to 22:00 (view point)

¥ Observation Deck: Adult 2,060 yen, Child 930 yen
Panorama Hall: Adult 1,030 yen, Child 510 yen

🚗 About 1,000 spots, Fee: 350 yen/30 minutes

🌐 www.tokyo-skytreetown.jp

🌐 www.tokyo-skytreetown.jp/english/

TOKYO SKY TREE TOWN®

10:00

10:00



Sensoji Temple/Nakamise

Sensoji is the oldest temple in Tokyo with nearly 1400 years of history as a cornerstone of shitamachi culture. At the center of the growth of Edo culture, its impact continues to mark the surrounding city including many traditional events in each season such as the Hagoita Market. The large Kaminarimon Gate with its enormous lantern is the start of the 250m Nakamise road with 90 shops, some of which have been there since the Edo period. This is a great place to experience Edo culture.

☎ 03-3842-0181 (9:30 to 16:00 except Sundays/Holidays)

* The temple is open 6:00 to 17:00 from April to September, 6:30 to 17:00 from October to March

* The Hozuki Market held on the grounds of the temple every year on July 9 and 10 is an ancient tradition celebrated today. It is said a pilgrim praying here on July 10 is held as having done so for 46,000 days.

📍 [Nakamise] Open year round

🌐 www.sensoji-jp.jp

5~7

hours course

¥25,000

¥35,000

Sensoji Temple/
Nakamise

11:00

11:30

Enjoy vistas of modern Tokyo from high above and close-ups of the oldest temples and ancient Edo atmosphere. See the craftsmanship of the tools used by Japanese artisans. At Tsukiji, the largest fish market in Japan and the world, taste the freshest fish served in old-fashioned styles. Take in Edo-Tokyo: both old and new.

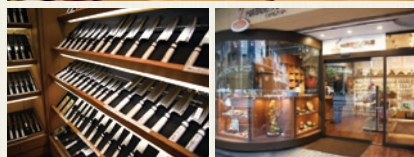
I enjoyed Japanese culture while shopping and through food. You can adjust the time with the driver to extend your stay for there are various tour courses you might want to check longer.



Kappabashi Dougu Street®

12:00

13:00



Kappabashi Dougu Street®

This market street has more than 100 years of history. Approximately 800 m in length, find more than 170 shops with products and services ranging from bladed tools like kitchen knives, to Japanese dinnerware, food samples and convenient cooking tools. With everything needed for kitchens made by tradespeople, this shopping district is frequented by professional chefs and the general public alike.

☎ 03-3844-1225

(Tokyo Kappabashi Dougu Street Promotion Union)

🕒 9:00 to 17:00 (depends on the store)

🌐 www.kappabashi.or.jp

🌐 www.kappabashi.or.jp/en/

Tsukiji Uogashi

13:00

14:30



Tsukiji Uogashi

Tsukiji Uogashi is a fresh seafood market that opened in 2016 combining the Odawarabashi and Kaikobashi buildings. The first floors feature seafood and vegetable markets with lined with Tsukiji brokers and the Uogashi Cafeteria using fresh ingredients found on the third floor. Open from 7:00am to 10:00pm.

🕒 7:00 to 14:00 (General admission from 9:00)

📅 Sundays, holidays and Tsukiji Market holidays

🌐 tsukiji.or.jp/forbiz/uogashi/

🌐 tsukiji.or.jp/english/

Patient Handiwork: Try creating Japanese arts and crafts

★ This is a model course. Times and costs are estimated with guidance in Japanese.

★ Parking fees, admission to facilities, expressway fees, meals, English tour guidance from a TSTiE driver and other expenses will be borne by the user.

Your lodgings (in Tokyo)

Short Course 9:00



Long Course 9:00



Shunkaen Bonsai Museum

Bonsai are an expression of Japan's traditional culture, recreating the breadth of nature in a small space; a living art that represents Japan to the world. The Shunkaen Bonsai Museum is a kind of escape from the urban bustle with many famous bonsai works. The 15 spaces inside allow contact with traditional Japanese living.

☎ 03-3670-8622

🕒 10:00 to 17:00

📅 Mondays (following Tuesday if holiday)

💰 General 800 yen, Student 600 yen (both tax included)

Bonsai Experience: 3,800 yen/person (including admission) reservation required

🚗 Free, 10 spaces

🌐 www.kunio-kobayashi.com/

🌐 www.kunio-kobayashi.com/en/

5~7

hours course

¥25,000

¥35,000

Shunkaen Bonsai Museum

10:30



10:30



Sensoji Temple/Nakamise

Sensoji is the oldest temple in Tokyo with nearly 1400 years of history as a cornerstone of shitamachi culture. At the center of the growth of Edo culture, its impact continues to mark the surrounding city including many traditional events in each season such as the Hagoita Market. The large Kaminarimon Gate with its enormous lantern is the start of the 250m Nakamise road with 90 shops, some of which have been there since the Edo period. This is a great place to experience Edo culture.

☎ 03-3842-0181 (9:30 to 16:00 except Sundays/Holidays)

* The temple is open 6:00 to 17:00 from April to September, 6:30 to 17:00 from October to March

* The Hozuki Market held on the grounds of the temple every year on July 9 and 10 is an ancient tradition celebrated today. It is said a pilgrim praying here on July 10 is held as having done so for 46,000 days.

📅 [Nakamise] Open year round

🌐 www.sensoji.jp

There are many unique traditional Japanese arts and crafts for you to try, such as the living art of bonsai. At the oldest temple in the metropolis and along its pilgrimage route you can feel the atmosphere of Edo.

The bonsai experience was such a special time. Taxi made the trips for locations far from the station much more efficient.

These kinds of Japanese cultural experiences are rare to find so I really enjoyed my time.



Sensoji Temple/Nakamise

11:30

12:00



Asakusa Jidaiya

12:00

13:30

Your lodgings
(in Tokyo)

14:00

16:00

Pick
up

Asakusa Jidaiya

Unique Japanese cultural experiences including tea ceremony, calligraphy, kimono and wadaiko. View traditional performing arts and theater handed down through the years and try iaido (sword drawing) and paper lantern making.

☑ 03-3843-0890

☑ 10:00 to 17:30

(Experience programs require reservation in advance)

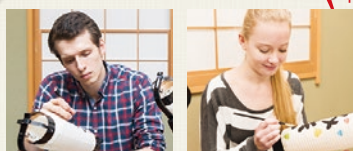
* Luggage storage service: 500 yen/day

☑ Tuesdays (Experience program)

* Rickshaws available year-round

WEB/JP www.jidaiya.biz

WEB/EN www.jidaiya.biz/index-e.html



Paper lantern making (reservation required)

Paper lanterns are a traditional Japanese craft that make great gifts or souvenirs. Draw your name or favorite characters and patterns to make an original lantern that you can take home with you.

¥ 7,000 yen / person (tax not included)



Rickshaw tour

Rickshaws are two-wheeled vehicles powered by people based on western horse-drawn designs from the early Meiji period.

¥ 30 minutes, 2 people 9,000 yen (tax included)

Pop Culture Capital: Amazing Tokyo

★ This is a model course. Times and costs are estimated with guidance in Japanese.

★ Parking fees, admission to facilities, expressway fees, meals, English tour guidance from a TSTiE driver and other expenses will be borne by the user.

Your lodgings (in Tokyo)

Short Course 9:00

Long Course 9:00

Ikebukuro

9:30

9:30

Nakano Broadway

10:30

11:00



Ikebukuro

Ikebukuro is one of the three main city centers alongside Shinjuku and Shibuya. All around the station are many variety stores and specialty shops, many of which are the first locations of the franchises they have grown into. In addition to enormous stores specializing in literature such as comics and manga, as well as character goods, figurines, anime goods, games and other software, one can also find smaller anime goods shops around the station. Known as a mecca of anime subculture alongside Akihabara and Nakano, there is a section known as "Otome Road" (maiden road) filled with shops targeting girls. Leave your purchases in the taxi and enjoy a tour without extra baggage.



Nakano Broadway

Since opening for businesses in 1966, Nakano Broadway is known for its local stores catering to geek subcultures, bringing together many people with specific interests. Find the latest in anime goods, figurines, manga and pop stars at this subculture mecca, known as a second Akihabara.

☑ 03-3388-7004

(Nakano Broadway Shopping District Promotion Association)

☑ ☑ Depends on the shop

☑ 300 yen/30 minutes

(Nakano Broadway underground parking)

WEB/JP www.nbw.jp/html/about.html#1ja

WEB/EN www.nbw.jp/html/about.html#1/en

Get in the thick of it in this mecca for subcultures, with whole areas focused on Japanese manga, anime, video games and variety goods. Enter new worlds brought to life through virtual reality technology and try activities that go beyond reality.

By placing souvenirs and gifts you've purchased in the taxi you can get around and visit the stores you want to more easily. There are things for people of every age to enjoy as you take in the living culture of Japan.



VR ZONE SHINJUKU

11:30



12:30

Akihabara

12:30



14:30

Your lodgings (in Tokyo)

14:00

16:00



Copyright Sotsu/Sunrise

VR ZONE SHINJUKU

This virtual reality (VR) entertainment facility opened in 2017 allowing enjoyment of beyond-reality experiences in the worlds of characters such as Dragon Ball, Evangelion and Gundam using VR goggles.

- ☎ 03-3200-8076 (Reception 9:30 to 18:00)
- 🕒 10:00 to 22:00 (last entry 21:00)
- 🕒 Open year-round
- 💰 800 yen
(1,200 yen per experience, 10 minutes per experience)

WEB/JP vrzone-pic.com
WEB/EN vrzone-pic.com/en/



Akihabara

Akihabara is famous among Japan's electronic markets for the many shops handling software for anime and game nerds. Known throughout the world as Akiba, you can find a wide range shops specializing in products and content including anime, games, comics and character goods. This is where you can experience Japan's otaku culture first hand. Leave your purchases in the taxi to enjoy your tour without extra baggage.



Epic Shopping: Discover the revolutionary and the retro

4~6

hours course

¥20,000

¥30,000

★ This is a model course. Times and costs are estimated with guidance in Japanese.

★ Parking fees, admission to facilities, expressway fees, meals, English tour guidance from a TSTiE driver and other expenses will be borne by the user.

Your lodgings (in Tokyo)

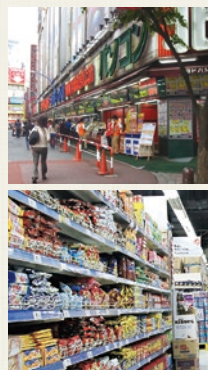
Short Course 9:00

Shinjuku

9:30

Long Course 9:00

9:30



Shinjuku

This area is filled with office towers centered around the Metropolitan Government headquarters. Near Shinjuku station you will find many long-running department stores, specialty shops and restaurants filled with unending waves of people day and night. The most prosperous commercial area of Japan can be seen in two different lights. From daily use sundry goods, goods, clothing appliances and tools to luxury brand goods, shop till you drop for items used in daily life, electronics, casual clothing and more. Going by taxi affords space to store purchases and the opportunity to share the experience of touring with family and friends.



So much shopping to explore; from shops focused on amusement to stores with unique collaborations and the cutting edge of fashion. Traditional folk crafts from all over Japan are gathered here for you.

Leaving my purchases in the taxi helped me get around as I shopped. I encountered so many kinds of products and had unique experiences. There are also many souvenirs at reasonable prices so I enjoyed getting a good deal.



Omotesando Hills

10:30

11:30

Japan Traditional Crafts Aoyama Square

11:30

13:00

Your lodgings
(in Tokyo)

13:00

15:00



Omotesando Hills

At the center of Japanese fashion and culture, Omotesando has been the birthplace of trends for many years. It is here that Omotesando Hills opened in 2006 as a cultural shopping center. With three underground and three above ground floors open to each other, there are more than 100 unique shops and restaurants with a streetside feel.

★ The Aoyama Apartments built from 1926 to 1927 have been preserved and are used as a gallery and other facilities.

- ☑ 03-3497-0310 (General Information 11:00 to 21:00) (Sundays until 20:00)
- ☑ Shopping 11:00 to 21:00 (Sundays until 20:00)
- ☑ Restaurants 11:00 to 23:30 (Sundays until 22:30)
- ☑ Café 11:00 to 21:00 (Sundays until 20:00)

🕒 Open year-round

🚗 700 yen/60 minutes (then 350 yen/30 minutes)

🌐 www.omotesandohills.com

🌐 www.omotesandohills.com/en/

Japan Traditional Crafts Aoyama Square

This gallery and shop is unique for its collection of traditional Japanese crafts gathered from across Japan including ceramics, glassware, textiles, dyed products and traditional paper. With clear explanations of each craft work, you can find out about its unique characteristics and method of production. There are opportunities to see tradesmen at work and see for yourself techniques that have been handed down through generations.

☎ 03-5785-1301

☑ 11:00 to 19:00

🗓 Year end/New Years

🌐 kougeihin.jp/aoyama/

🌐 kougeihin.jp.e.oop.transer.com/aoyama/

Spa Time: Rejuvenate yourself in famous onsen waters just a short ride from Tokyo

6~8

hours course

¥30,000

¥40,000

★ This is a model course. Times and costs are estimated with guidance in Japanese.

★ Parking fees, admission to facilities, expressway fees, meals, English tour guidance from a TSTiE driver and other expenses will be borne by the user.

Your lodgings (in Tokyo)

POLA Museum of Art

Hakone-jinja Shrine

Short Course 9:00

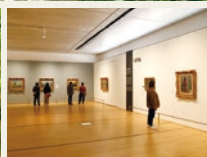
10:40

11:30

Long Course 9:00

10:40

12:00



POLA Museum of Art

A museum blended in the nature in Hakone. Paintings of impressionists such as Monet, Renoir and Gogh are the cornerstones of the exhibition. You can also enjoy the natural splendor of plants and birds at the 670m long promenade in the surrounding forest.

☎ 0460-84-2111

🕒 9:00 to 17:00 (final admission 16:30)

🗓 Open year-round (closed during exhibition change)

💰 Adult 1,800 yen,
elementary and junior high school students 700 yen (Free on Saturday)

🚗 500 yen/day

🌐/JP www.polamuseum.or.jp🌐/EN www.polamuseum.or.jp/english/

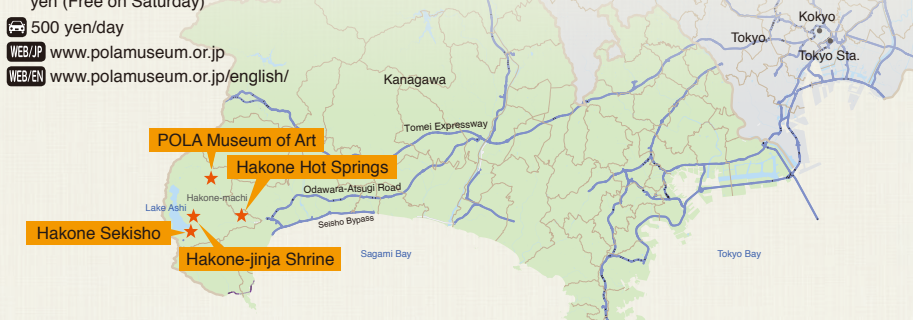
Hakone-jinja Shrine

The shrine was found by Mangan Shounin for the oracle of Hakone Okami in 757. It has 1261 years of history where Minamoto no Yoritomo, Ieyasu Tokugawa and many other military commanders worshiped. Large trees are planted along the approach and it is well known as a power spot filled with energy from the land of Hakone.

☎ 0460-83-7123

🗓 Open year-round

🚗 Free

🌐 hakonejinja.or.jp

Hakone has been renowned for its natural hot spring waters for centuries and today still offers relaxing spas, historical sites and a majestic natural environment. At this gallery organically blended into the forest, slowly relish the world of art in spaces full of natural beauty and light.

It was so good to leave luggage in the taxi and learn about history from my driver on the way. I thought it would be good to use a tourism taxi as a family or with a group.



Hakone Sekisho

12:15



13:30

Hakone Hot Springs

12:45

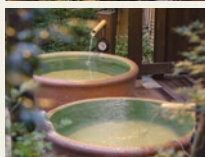
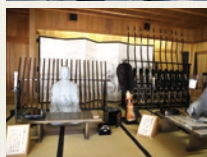


14:30

Your lodgings
(in Tokyo)

15:00

17:00



Hakone Sekisho

Hakone Sekisho was installed during the Edo period to observe people traveling on the Tokaido road and was a place of trial for travelers for some 250 years. This gateway passage has been faithfully restored to how it was. Fall back through time to the Edo-period.

☎ 0460-83-6635

🕒 9:00 to 17:00 (until 16:30 December through February)
* Admission until 30 minutes before closing

¥ Adult 500 yen, Child 250 yen

🚗 Use a nearby parking lot

WEB/JP www.hakonesekisyo.jp

WEB/EN www.hakonesekisyo.jp/english/main/main.html

Hakone Hot Springs

The Hakone hot springs are among the oldest in Japan, opened 1200 years ago in the Nara-period. There are some twenty hot spring towns each with their own water qualities and healing effects, together with many traditional inns boasting of their famous spas. There are rental private open-air baths for a spa day trip so you can enjoy the natural splendor of Hakone and relax in the soothing waters.



One for the Road: Sights to see on the way to the airport

3

hours course

¥15,000

★ This is a model course. Times and costs are estimated with guidance in Japanese.

★ Parking fees, admission to facilities, expressway fees, meals, English tour guidance from a TSTIE driver and other expenses will be borne by the user.

Your lodgings
(in Tokyo)

9:00

Tokyo Metropolitan
Government

9:30

Meiji Jingu Shrine

9:45

Omotesando

10:15

Shibuya Scramble
Intersection

10:25



1 Tokyo Metropolitan Government

The Metropolitan Government complex was designed by renowned Japanese architect, Kenzo Tange, and is a Tokyo landmark. It is surrounded by many other high-rise tower buildings.



2 Meiji Jingu Shrine

This shrine was built in 1920 and is dedicated to Emperor Meiji and Empress Dowager Shoken. Forget that you are in the middle of the city among the hand-made shrines.



3 Omotesando

This pilgrimage trail leads to the front of Meiji Shrine. Known as a shopping district, there are many famous domestic and international brand goods and refined product shops.



4 Shibuya Scramble Intersection

The intersection in front of Shibuya Station is crossed by up to 500,000 people every day. Each time the lights turn green, 3,000 people make way for each other as they pass. This sight has gathered attention from around the world.



5 Kokyo Nijubashi

This doubled bridge crossing the moat connects from the square in front of Edo Castle, the old imperial residence, and passes the front gate to the palace. Normally unused, it is used for New Years visits to the palace or when holding official events at the palace such as imperial visits by foreign dignitaries.



Even on the day of your departure through Haneda Airport, tour famous sights through your window on the way to the airport. Stop and take a picture to remember by at any place that strikes your fancy and create lasting memories of Tokyo.



Kokyo Nijubashi	Tokyo Station and Marunouchi Station Square	Tokyo Tower	Rainbow Bridge	Odaiba	Haneda Airport
10:50	10:55	11:10	11:40	11:45	12:00
5	6	7	8	9	



6 Tokyo Station and Marunouchi Station Square

The Tokyo Station Marunouchi Station Building is a designated important cultural property. In 2012 the building was restored to the 1914 appearance. The square in front of Marunouchi Station was created with the restoration of the station building and opened in December 2017.



7 Tokyo Tower

Opened in 1958 and celebrating 60 years in 2018, this 333 m tower is a symbol of Tokyo. The main deck at 150 m and top deck at 250 m offer panoramic views of Tokyo.

- ☎ 03-3433-5111 🕒 Open year-round
- ✅ Main Deck 9:00 to 23:00 (last entry 22:30)
Top Deck Tour 9:00 to 22:45 (final tour 22:15)
(Entry to the top deck with tour starts every 15 minutes. Participation in the tour mandatory)
- 💰 Main Deck: Adult 900 yen, Child 500 yen
Top Deck Tour: Adult 2,800 yen, Child 1,800 yen



8 Rainbow Bridge

This suspension bridge spans 798 m joining the city center with the Rinkai Fukutoshin area and was opened in 1993. The lower deck has a walking path for those that want to walk across. Tokyo Bay and the buildings of the metropolis can be viewed from the top and are a symbol of Tokyo.



9 Odaiba

This area was originally a defensive installation for Edo-Tokyo in the Edo-period. It has been redeveloped as the Tokyo Rinkai Fukutoshin, with marine bus stops, entertainment, gourmet, shopping and much more to enjoy.

Using a Sightseeing Taxi

It is possible to customize your experience, whether you want to pick the course and select specific spots or take more time at a specific place you've been looking forward to.

For details, consult with the taxi operator including the following four items:

- 1 Tokyo Sightseeing Taxi requires reservation and cost is based on time used.
- 2 The type of vehicle depends on the operator.
- 3 Cancellation after making a reservation may result in cancellation fees.
- 4 Tokyo Tourism Taxi Usage Fee
 - Ask the taxi company about fees for specific services such as drivers that can communicate in other languages including English.

Flow



* Reservation can be made by phone or online.

* Pickup and drop off possible if locations within the 23 special wards or Tama area.

Contact the following for more details about the Sightseeing Taxi

Tokyo Hire-Taxi Association Sightseeing Taxi Website

WEB/JP www.taxi-tokyo.or.jp/kanko_taxi/

WEB/EN www.taxi-tokyo.or.jp/english/kanko_taxi/



WEB/JP



WEB/EN



Operators can be found at the following website

To make a reservation or inquiry, contact a sightseeing taxi operator.

WEB/JP www.taxi-tokyo.or.jp/kanko_taxi/company01.html

WEB/EN www.taxi-tokyo.or.jp/english/kanko_taxi/company_list.html

Find out about the latest Tokyo tourism
information at the site below.

WEB/JP



WEB/EN



The Official Tokyo
Tourism Site

WEB/JP www.gotokyo.org/jp/

WEB/EN www.gotokyo.org/en/

See the things you want to see

Get dropped off at your hotel afterwards



index

Model Course Map.....	4-5
Model Course 1.....	6-7
(Cultural Edo: Visit shrines and gardens wearing a kimono)	
Model Course 2.....	8-9
(Relaxing Japan: Enjoy local sake, onsen, and soba)	
Model Course 3.....	10-11
(Downtown Shitamachi: Experience daily life and tea ceremony)	
Model Course 4.....	12-13
(Historical Edo-Tokyo: Explore the culture and food of the past)	
Model Course 5.....	14-15
(Avant-garde and Ancient: Tour the old and new in Tokyo)	
Model Course 6.....	16-17
(Patient Handiwork: Try creating Japanese arts and crafts)	
Model Course 7.....	18-19
(Pop Culture Capital: Amazing Tokyo)	
Model Course 8.....	20-21
(Epic Shopping: Discover the revolutionary and the retro)	
Model Course 9.....	22-23
(Spa Time: Rejuvenate yourself in famous onsen waters just a short ride from Tokyo)	
Model Course 10.....	24-25
(One for the Road: Sights to see on the way to the airport)	
Using a Sightseeing Taxi.....	26-27

Tourism Division, Bureau of Industrial and Labor Affairs

2-8-1, Nishi-Shinjuku, Shinjuku-ku, Tokyo 163-8001, Japan TEL : 03-5320-4771



Published March 2018 Registration number (29)300

●Editing Cooperation/ Tokyo Hire-Taxi Association

●Picture Cooperation/ Tokyo Convention & Visitors Bureau, Shochiku Co., Ltd., Kimono Rental VASARA,
Hakone Yuryo, Akigawa Keikoku Seoto-no-Yu Spa, Animate Ikebukuro Honten
and AKIHABARA Gamers Honten

●Design & Edit/ DoUrban Co., Ltd.

●Printing/