



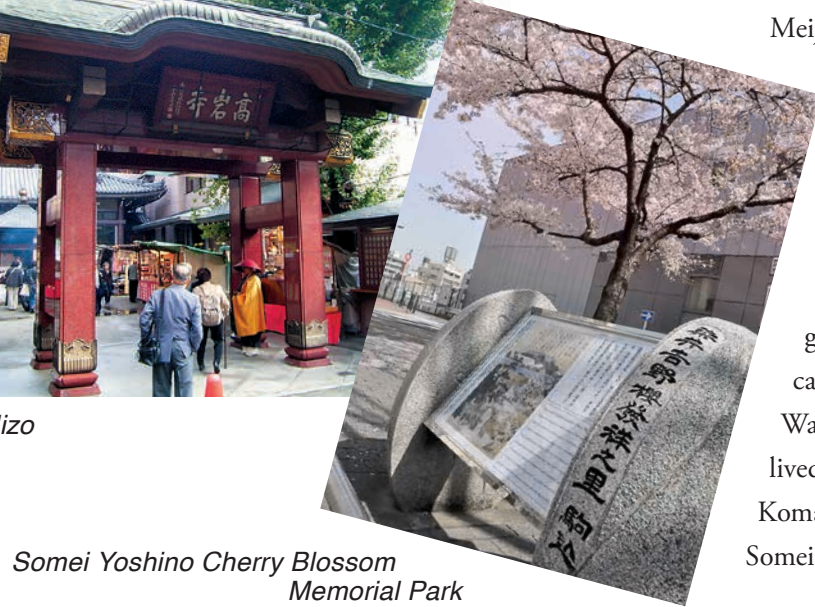
Publisher the TOSHIMA Tourism Association
Toshima Civic Center 2F, 1-20-10, Higashi-Ikebukuro, Toshima-ku, Tokyo 170-0013
TEL: 03-3981-5849 FAX: 03-3981-5878
http://www.kanko-toshima.jp
Collaboration Toshima city
Date of issue March, 2015



Edo Roku Jizo-son



Togenuki Jizo



Somei Yoshino Cherry Blossom Memorial Park

Nagasaki (former Shiinamachi)

A two-story wooden apartment called "Tokiwa-so," once located in Nagasaki, is said to be the birthplace of today's Japanese manga. Lots of leading Japanese manga artists, such as Tezuka Osamu and Akatsuka Fujio, once lived in this apartment.
Nagasaki has "Tokiwa-so"-related features: a monument standing on the former site of Tokiwa-so, another monument called "the Heroes of Tokiwa-so" in Minami-Nagasaki Hanasaki Park. Moreover, a small manga-related museum called "Tokiwa-so Oyasumidokoro" stands along the Tokiwa-so Street. Nagasaki has been a place associated with manga.
"Nagasaki Shishimai," performed in Nagasaki Shrine located in Shiinamachi Station's North Exit on the Seibu Ikebukuro Line, is a traditional performing art and has been handed down since the Edo period. It is designated as an intangible cultural asset in Toshima City.



a monument "the Heroes of Tokiwa-so"



café in Kongo-in Temple



Nagasaki Shishimai



Tokiwa-so Oyasumidokoro



a tourist information center in Zōshigaya



Gakushuin University



Kishimojindo



Zōshigaya Missionary House Museum



Hōmyōji Temple

Zōshigaya, Takada, Mejiro

Zōshigaya was registered on "Heritage for the Future" list by the NFAJ in 2014.
People come to enjoy various kinds of events all year around: New Year's visit of the temples and shrines of the Seven Gods of Good Fortune, cherry blossoms viewing in Hōmyōji Temple, a market held in July at Kishimojindo, the Buddhist event called "Oeshiki" in autumn, "Tori-no-ichi" in the Otori Shrine, and tolling a bell on New Year's Eve at Hōmyōji Temple. Zōshigaya Missionary House Museum and Zōshigaya Cemetery, where many people of culture including Soseki Natsume rest, can be seen in this neighborhood.
Takada is a town in which Japan's history is still alive. It contains Konjo-in Mejiro Fudō-son, Nanzō-in Temple, Konshō-in Temple, a monument "Yamabuki no Sato," and Omokagebashi Bridge etc.,
Mejiro, said to be an upscale residential area, is famous for Gakushuin, a school where members of the Imperial Family have studied for generations, and its lushly green woods. In

Ikebukuro Station is said to be one of the biggest railway terminals in Tokyo, Japan. It contains the JR Yamanote Line, the JR Saikyō Line, the Tobu Tojō Line, the Seibu Ikebukuro Line, Tokyo Metro Marunouchi Line, Yurakucho Line, Fukutoshin Line, etc., Narita Express directly connects Ikebukuro Station and Narita International Airport. It is a very convenient place for shopping and people can get whichever they might require because the station buildings and department stores are directly connected, such as Tobu Department Store, LUMINE, TOBU HOPE CENTER, Echika, Esola, etc., In addition, various cultural events are held at Tokyo Metropolitan Theater and Ikebukuro Nishiguchi Park on the west side of Ikebukuro Station. A ten-minute-walk from the West Exit will bring you to historic buildings such as Jiyu Gakuen Myōnichi-kan, a pioneering school of liberal education for Japan's women and designed by Frank Lloyd Wright, Rikkyo University, the oldest Christianity University, and the Former Residence of Rampo Edogawa, a leading author of Japanese detective stories.



Tokyo Metropolitan Theater



Otsuka Rose Festival

Sugamo, Otsuka, Komagome

Sugamo has been famous worldwide as a town which attracts elderly people and is now very popular with young people and tourists. There are historic temples and shrines, such as Koganji Temple, well-known as nicknamed "Togenuki Jizo" and Shinshōji Temple, famous for Edo Roku Jizo-son. Somei Cemetery and the site of Meiji Girls' School are familiar to many people.
Toden Arakawa Line, the only municipal streetcar remaining in Tokyo, runs through Otsuka. In Tenso Shrine in front of Otsuka Station, there is a 500-year-old ginkgo tree that survived the fire caused by an air raid during World War II. This energetic ginkgo tree has lived with people in everyday life. Komagome is famous as the birthplace of Somei Yoshino cherry blossom trees.



a new building of Toshima City Office

Ikebukuro Station's West Exit



Jiyu Gakuen Myōnichi-kan



Rikkyo University and "Suzukake-no-michi"

Tokyo Yosakoi

Former Residence of Rampo Edogawa



Sunshine City



Konica Minolta Planetarium "Manten"



Sunshine Aquarium

Sunshine City



J-WORLD TOKYO



NAMJATOWN



Pokémon Center MEGA TOKYO

Funsui-hiroba (the Fountain Plaza)

Senkawa, Takamatsu, Chihaya, Kanamecho

Until about 1950, there were many ateliers around this area, and young painters and sculptors worked hard. Oguma Hideo, a poet, called this area "Ikebukuro Montparnasse" and passed it on to the future generations. A lot of people of culture, such as Yamate Kiichiro, known as an author of the novel Momotarōzamura, and Minakami Tsutomu, a mystery writer, lived in this neighborhood as well.



Sakuragaoka Parthenon



Kumagai Morikazu Art Museum



Senkawa Sculpture Park

Ikebukuro Station's East Exit

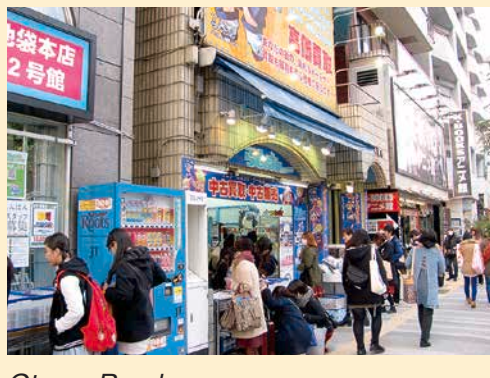
Ikebukuro Station's East Exit is characterized by a large shopping area and lined with Seibu Department Store, PARCO, Ikebukuro Shopping Park (ISP), Tokyu Hands, Bic Camera, Yamada Denki (LABI 1) etc.,. It is also said to be downtown Tokyo, including many restaurants and amusement facilities. It is famous as "a Mecca for anime" and lots of anime fans from both inside and outside Japan visit this area. Sunshine-dori Ave., heading east from Ikebukuro Station's East Exit, is filled with people coming and going to Sunshine 60 all day long.
The new Toshima City Office Building, under construction at Minami-Ikebukuro, is going to open in May, 2015.



(top) a main street "Green O-dori Ave."



(bottom) an intersection of Green O-dori Ave.

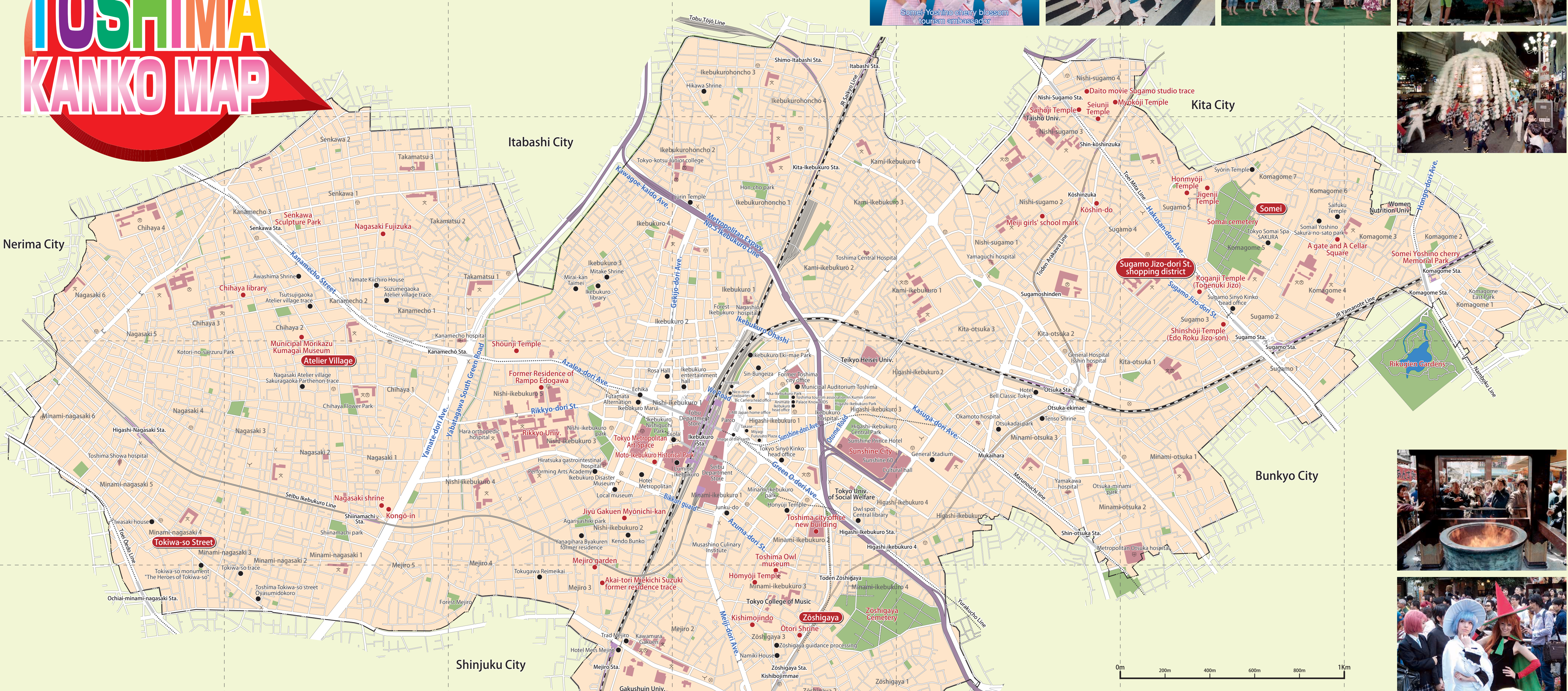
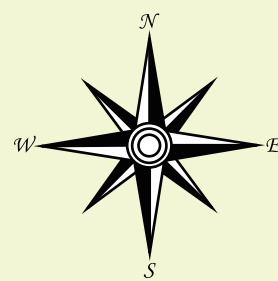


Otome Road



animate Ikebukuro

TOSHIMA KANKO MAP



Walking Course①	Walking Course②	Walking Course③	Walking Course④
Ikebukuro Station's East Exit	Ikebukuro Station's West Exit	JR Otsuka Sta.	JR Sugamo Sta.
↓	↓	↓	↓
Toshima Owl museum	Tokyo Metropolitan Art Space	Toden Mukaihara Sta.	Shinshoji Temple (Edo Roku Jizo-son)
↓	↓	↓	↓
Hōmyōji & Kishimojindo	Moto-Ikebukuro Historical Park	ride on Toden	Koganji Temple (Togenuki Jizo)
↓	↓	↓	↓
Otori Shrine	Jiyu Gakuen Myōnichi-kan	Kōshinzuka get off	Honmyōji, Jigenji Temple
↓	↓	↓	↓
Zōshigaya Cemetery	Rikkyo University & "Suzake-no-michi"	Meiji girls' school mark	Somai cemetery
↓	↓	↓	↓
Toshima city office new bldg. (2015.5 OPEN)	Former Residence of Rampo Edogawa	Kōshin-do	A gate and A Cellar Square
↓	↓	↓	↓
Sunshine City	Shōunji Temple	Seiunji, Myōkōji, Saihōji Temple	Somei Yoshino cherry Memorial Park
↓	↓	↓	↓
Ikebukuro Station's East Exit	Ikebukuro Station's West Exit	Daito movie Sugamo studio trace	Rikugien
		↓	↓
		Toei Mita Line Nishi-Sugamo Sta.	JR Komagome Sta.

Walking Course⑤	Walking Course⑥
JR Mejiro Sta.	Seibu Ikebukuro Line Shinamachi Sta.
↓	↓
Akai-tori Miekichi Suzuki former residence trace	Kongō-in
↓	↓
Mejiro garden	Nagasaki shrine
↓	↓
Gakushuin	Municipal Morikazu Kumagai Museum
↓	↓
Philatelic Museum	Chihaya library
↓	↓
Konjō-in Temple, Mejiro Fudō-son	Nagasaki Fujizuka
↓	↓
Syuku-zaka	Senkawa Sculpture Park
↓	↓
Chitose Bridge	Yurakucho Line Senkawa Sta.
↓	
Fukutoshin Line Zōshigaya Sta.	

● Annual Events in Toshima City ●	
Apr	Somei-Yoshino Cherry Blossom Festival
May	Nagasaki Shishimai (Traditional Festival) Otsuka Rose Festival New Ikebukuro Montparnasse Nishiguchi Art Museum Stroll Ikebukuro Jazz Festival Folk & Country West Park Festival
Jul	Tokyo Hula Festa in Ikebukuro
Aug	Otsuka Awa Odori(Dance Festival)
Sep	Fukuro Matsuri (Traditional Festival) PART 1
Oct	Fukuro Matsuri (Traditional Festival) PART 2 & Tokyo Yosakoi (Dance Festival) Oeshiki (Memorial Service of Nichiren Shonin) Otsuka Rose Festival
Nov	FESTIVAL/TOKYO Sugamo Nakasendo Chrysanthemum Festival
Jan	Zoshigaya seven lucky gods tour