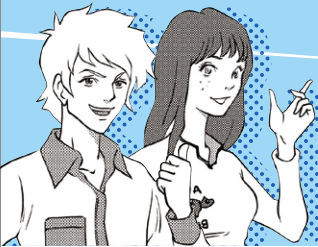


Get a close-up look at the biggest subculture of Japan

TOKYO ANIME & MANGA MAP



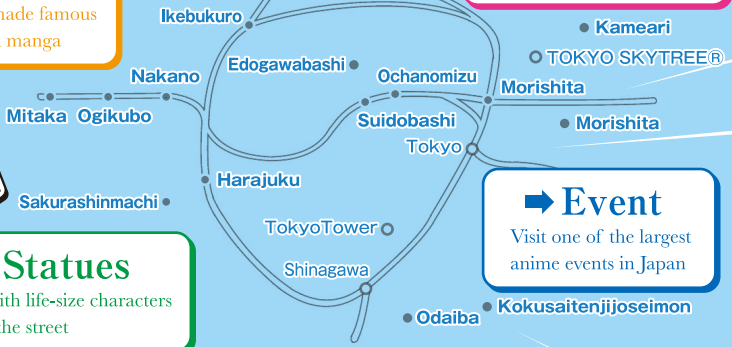
→ **Towns**
Walk towns made famous by anime and manga

→ **Shops**
Hunt for merchandise based on your favorite characters

→ **Museums**
See original manga drawings and anime in the making

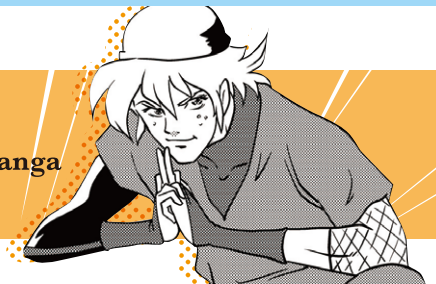
→ **Statues**
Pose with life-size characters lining the street

→ **Event**
Visit one of the largest anime events in Japan



Anime and manga are a Japanese subculture gone global. While based in entertainment for children and adults, a closer look reveals the deeper, broader world of knowledge and wit, trends and dreams that mesmerizes fans across the world.

Towns Walk towns made famous by anime and manga



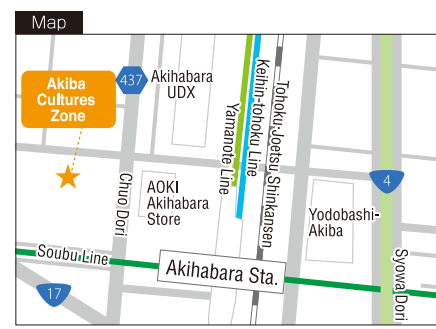
Akihabara A Mecca for subcultures

The Akihabara district of Tokyo draws attention from anime fans worldwide. Now that the otaku subculture has won recognition abroad, it's out to set more new trends. The town full of energy has no limit to its attraction for shops and businesses.

When shops carrying electronics components and electric appliances popped up and the district developed into an "Electric Town." Later, with the boom in computer games, more shops appeared targeting anime and game enthusiasts. As Akihabara gained fame and saw the emergence of one quirky shop after another, a unique building opened in summer 2011: Akiba Cultures Zone. The commercial facility spanning from a basement to six floors above ground level features a lineup of shops offering comics, figurines, and other subculture miscellanea, and on the top floor, an "entertainment cafe" where the customers foster their own idols. This single building captures the essence of everything Akihabara. If you're out to get a taste of the Akihabara subculture in this expansive district, Akiba Cultures Zone is a good first place to visit.



Akiba Cultures Zone
Address 1-7-6 Sotokanda, Chiyoda-ku
Access 4-min. walk from JR Akihabara Station
Inquiries Contact each store directly



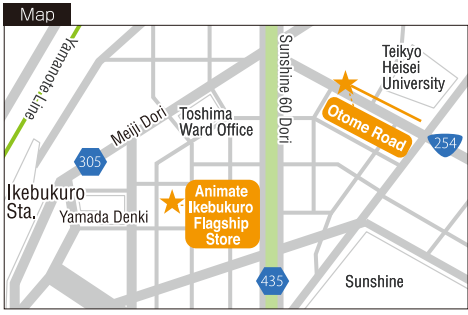
Ikebukuro Toshima-ku and its links with anime and manga

At the dawn of the modern manga, Toshima-ku and the area around it was home to many manga artists, two of the most prominent being Mitsuteru Yokoyama, known for Tetsujin 28-go (Iron Man #28), and Osamu Tezuka, for Astro Boy. The neighborhood of Tokiwa-so apartment, which produced scores of renowned artists including Tezuka, Fujiko Fujio (A), and Fujiko F. Fujio, is an established sightseeing spot complete with a monument in memory of the apartment in the Toshima Municipal Minami-Nagasaki Hanasaki Park. Toshima-ku today has even more links with anime and manga, such as Otome (Maiden) Road, named after the density of shops dealing in merchandise of otome-kei anime and manga targeting women. One of the largest in the world is the Animate Ikebukuro Flagship Store.

Animate Ikebukuro Flagship Store
Address 1-20-7 Higashiikebukuro, Toshima-ku
Hours 10:00-21:00
Access 5-min. walk from JR / Tobu Line / Seibu Line / Tokyo Metro Ikebukuro Station
Inquiries 03-3988-1351



Otome Road
Address Around Higashiikebukuro 3-chome, Toshima-ku
Access 8-min. walk from JR / Tobu Line / Seibu Line / Tokyo Metro Ikebukuro Station



Chofu Home of Shigeru Mizuki, creator of GeGeGe no Kitaro

Manga artist Shigeru Mizuki continues to breathe life into yokai—creatures that exist in children's imagination, and a distinct element of Japanese culture—with a unique style and worldview in the series GeGeGe no Kitaro. His home of nearly 50 years, the city of Chofu, releases updates about Mizuki in "Chofu GeGeGe News," and operates a community bus nicknamed "Kitaro Bus" for the manga's characters painted on the vehicles.



Address Keio Line Chofu Station
Inquiries 042-481-7184 (Chofu City Hall Industry Promotion Section Tourism Office)
<http://www.city.chofu.tokyo.jp/www/contents/1232441137043/index.html>



Kameari

Setting of Kochikame, the world's longest-running manga series

Kochira Katsushika-ku Kameari-koenmae Hashutsujo (This is the Police Station by Kameari Park in Katsushika-ku), often shortened to Kochikame, holds the world record as the longest-running serial published in a young men's manga magazine. The more than 35-year-old story is set in the neighborhood of Kameari, where 14 statues of Kankichi Ryotsu and the manga's other characters stand at Kameari Station and throughout town.



Kameari Park

Address	5-36-1 Kameari, Katsushika-ku
Access	5-min. walk from JR Kameari Station

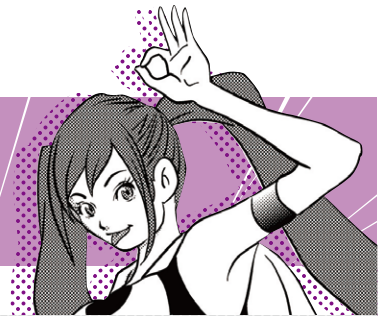
Katori-jinja Shrine

Address	3-42-24 Kameari, Katsushika-ku
Access	3-min. walk from JR Kameari Station
Inquiries	03-3601-141



Shops

Hunt for merchandise based on your favorite characters



Harajuku

KIDDY LAND Harajuku Store

Kiddy Land is a shopping destination for popular character merchandise. The Harajuku store features specialty shops dedicated to Hello Kitty, Rilakkuma, and more. It is the place to go to experience Japan's kawaii subculture.



Address	Harajuku Omotesando, 6-1-9 Jingumae, Shibuya-ku
Access	3-min. walk from Tokyo Metro Meiji-jingumae (Harajuku) Station; 7-min. walk from JR Harajuku Station
Inquiries	03-3409-3431 http://www.kiddyland.co.jp/en/index.html



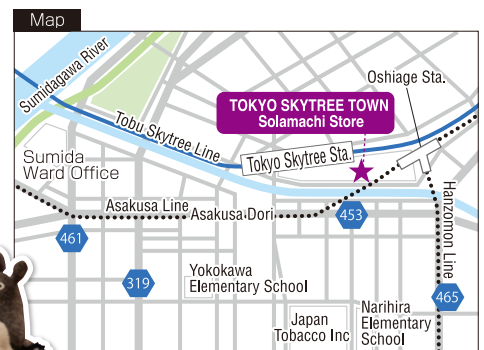
Oshiage

Donguri Kyowakoku TOKYO SKYTREE TOWN Solamachi Store

Donguri Kyowakoku carries a vast lineup of character merchandise based on anime feature films produced by Studio Ghibli, like My Neighbor Totoro, Kiki's Delivery Service, and Spirited Away. A life-size stuffed toy of Totoro greets visitors at the entrance.



Address	TOKYO SKYTREE TOWN Solamachi 2F, 1-1-2 Oshiage, Sumida-ku
Access	Short walk from Tobu SKYTREE Line TOKYO SKYTREE Station; Tobu Line / Tokyo Metro / Toei Subway / Keisei Line Oshiage (SKYTREE) Station
Inquiries	03-5610-5299



Nakano

Nakano Broadway

Nakano Broadway is a shopping complex comprising a jumble of specialty stores that appeal to a niche clientele and down-to-earth shops for ordinary customers. It's worth mentioning here as a subculture destination owing to the large number of retailers in the former category, including anime- and manga-related merchandise dealer Mandarake. Do not miss this spot if you seek rare, one-off items.

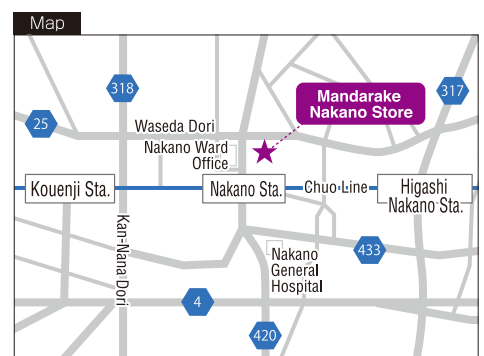


Mandarake Nakano Store

Address	5-52-15 Nakano, Nakano-ku
Access	5-min. walk from JR / Tokyo Metro Nakano Station
Inquiries	03-3228-0007 http://ekizo.mandarake.co.jp/shop/en/

Nakano Broadway

Address	5-52-15 Nakano, Nakano-ku
Access	5-min. walk from JR / Tokyo Metro Nakano Station



Museums

See original manga drawings and anime in the making

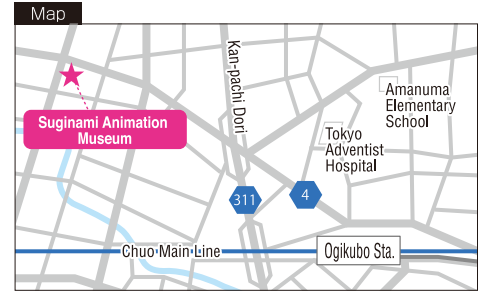


Ogikubo

Suginami Animation Museum

Suginami Animation Museum offers a comprehensive learning experience of the history and principles of Japanese anime. Interactive exhibits that invite visitors to participate in the process of creating anime, like post-production dubbing work, are guaranteed to hold your attention. Regular feature exhibitions introduce the latest developments in the anime industry.

Address	Suginami Kaikan 3F, 3-29-5 Kamiogi, Suginami-ku
Hours	10:00–18:00 (Closed Mondays)
Access	From JR / Tokyo Metro Ogikubo Station North Exit, 5 min. on Kanto Bus (board at No. 0 or No. 1 bus stop)
Inquiries	03-3396-1510 http://www.sam.or.jp/eng.pdf



Mitaka

Ghibli Museum, Mitaka

Ghibli Museum, Mitaka, invites visitors into the world of Studio Ghibli with exhibit rooms reflecting the mechanism of anime and the feel of the production process, and a miniature theater screening original short films. Playful diversions and elaborate tricks in every corner of the labyrinthine space make visitors want to visit again and again. Admission is by reservation only.

Address	Inokashira Park West Side, 1-1-83 Shimorenjaku, Mitaka-shi
Hours	10:00–18:00 (Closed Tuesdays and for irregular long holidays)
For information about reserving date-specific tickets and purchasing tickets from abroad	http://www.ghibli-museum.jp/en/ticket-information/
Access	15-min. walk or Community Bus from JR Mitaka Station South Exit



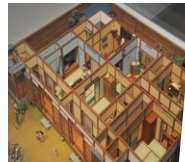
©Museo d'Arte Ghibli



Sakura-Shinmachi

Hasegawa Machiko Art Museum

Hasegawa Machiko Art Museum is located in the Sakura-Shinmachi neighborhood of Setagaya-ku, where the creator of Sazae-san lived from 1946 to her eternal rest in 1992. The museum displays not only original drawings of Hasegawa's work, including Sazae-san, but also artwork collected by Hasegawa and her sister Mariko.



©Hasegawa Machiko Art Museum

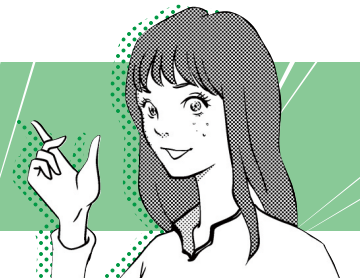


Address	1-30-6 Sakura-shinmachi, Setagaya-ku
Access	7-min. walk from Tokyu Den-en-toshi Line Sakura-shinmachi Station
Inquiries	03-3701-8766



Statues

Pose with life-size characters lining the street



Odaiba

Gundam Front Tokyo

Thirty years on from the first broadcast of Mobile Suit Gundam in 1979, the world of Gundam continues to evolve today. And the paid-admission (partly free) facility Gundam Front Tokyo offers a first-hand experience of this world. A recommended feature is Dome-G, where new computer-graphics images are projected on an enormous dome 16 meters in diameter, fitted with six projectors and 13 speakers, immersing you in the dynamic experience of life-size mobile suits.

Address	DiverCity Tokyo Plaza 7F, 1-1-10 Aomi, Koto-ku
Hours	10:00–22:00; Weekends and holidays 9:00–22:00 ※Open year round ※Tickets for paid admission zone are date- and time-specific
Access	5-min. walk from Yurikamome Daiba Station; 3-min. walk from Rinkai Line Tokyo Teleport Station
Inquiries	http://gundamfront-tokyo.com/en/



©Sotsu Co., Ltd. SUNRISE

Gundam life-size statue

RG1/1 RX-78-2 Gundam Ver.GFT

Location Festival Plaza, DiverCity Tokyo Plaza

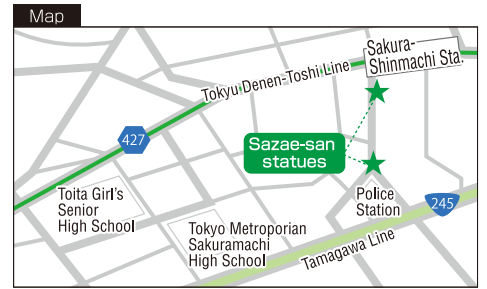


Sakura-Shinmachi

Sazae-san statues

Four areas by Sakura-Shinmachi Station feature 12 statues of members of the Sazae-san family. The beautiful townscape is scattered with hints of the world of Sazae-san.

Location Around Sakura-Shinmachi Station and in front of the koban police station on Sazae-san-dori Street

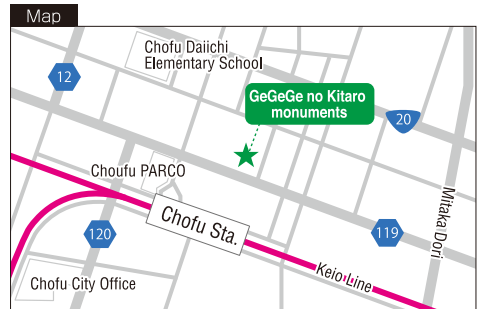
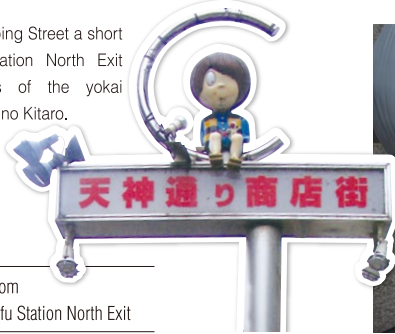


Chofu

GeGeGe no Kitaro monuments

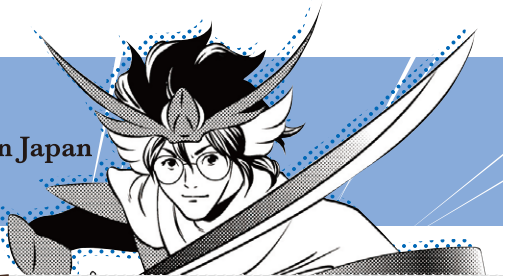
The Tenjin-dori Shopping Street a short way from Chofu Station North Exit features monuments of the yokai creatures in GeGeGe no Kitaro.

Location 2-min. walk from Keio Line Chofu Station North Exit



Event

Visit one of the largest anime events in Japan



Ariake

Tokyo International Anime Fair 2013

Tokyo International Anime Fair is one of the largest anime events in Japan—and in the world—both in scale and in breadth of attraction. In 2012, it recorded the highest number of overseas exhibitors and visitors to date. The fair comprises a tradeshow, where participating companies promote new anime works; a selling booth zone that offers merchandise based on popular anime works and characters; a competition that selects and awards excellent works; and events such as talk shows by anime voice actors and concerts by anime song singers.

Date March 23–24, 2013

Location Tokyo Big Sight, 3-10-1 Ariake, Koto-ku

Access 3-min. walk from Yurikamome Kokusai-tenjijo-seimon Station;
7-min. walk from Rinkai Line Kokusai-Tenjijo Station

Inquiries <http://www.tokyoanime.jp/en/>

